



# **ARTEK LASER TECHNOLOGY PVT LTD**

A-78, SECTOR 69, NOIDA- 201301

**Mob : +91 92102 77483, +91 98916 05494**

www.arteklaser.com Email : sales@arteklaser.com

## About Us

Artek Laser is pioneer in laser technology with 7 years of vast experience in Laser, Optics, Electro-Optics & Opto-Mechanical equipment's which makes us to manufacture all kind of laser machines for material processing solutions to our customers since 2018.

Ajeet Singh, an eminent Indian Laser expert who has Designed, Developed and Produced Various Lasers Systems for Industrial and Research Applications Since 2018, has promoted Artek Laser.

## Why Artek

- 1<sup>st</sup> in India to registered as a Laser Machine Manufacturing Company.
- Dedicated R&D Center/Application Lab for new developments in Noida.
- we stands for quality, excellent products, highly efficient processes, and outstanding results.
- Strong and Professional R&D Team since inception.
- Inhouse parts production to precision manufacturing.
- Very well known name in the field of Electrical & Electronics and Automobile sector.

## Where We Focus

We provides manufacturing solutions to the various Industries and its Applications for

- Automotive
- Machine Tools
- Medical & Pharmaceuticals
- Die - Mould
- Print & Packaging
- Electrical & Electronics
- Signage & Gifting
- Jewellery & many more...

## Our Range of Products

- ★ Fiber Laser Marking Desktop
- ★ Fiber Laser Marking Portable
- ★ UV Laser Marking Machine Desktop
- ★ UV Laser With Rotary
- ★ UV Laser With Convyor
- ★ Co2 Laser Marking Machine
- ★ Co2 Cutting Machine
- ★ Green Laser Marking Machine
- ★ Laser Welding Machine
- ★ Laser Spare Parts

## Explore US

### Fiber Laser Marking Machine



### Portable FiberLaser Marking Machine



### UV Laser Marking Machine



### Co2 Laser Cutting Machine



### Co2 Laser Marking Machine



### Fly Laser Marking Machine



### Spares & Essentials



## Fiber Laser Marking Machine



Fiber Laser Galvo Head



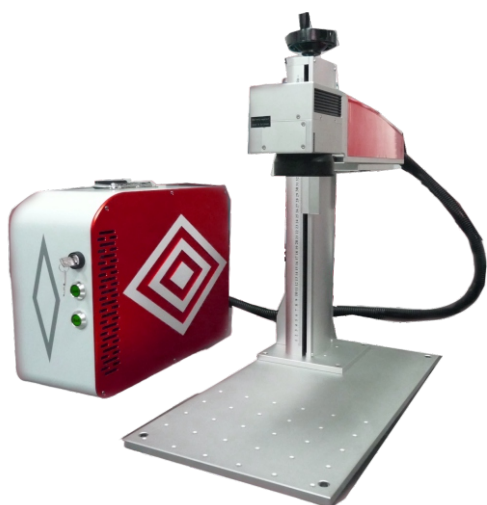
Fiber Laser Galvo Lens



EZ Card for Marking



Fiber Laser Marking Machine Desktop



Fiber Laser Marking Machine Portable

### Features:

- Low operating Cost & zero maintenance cost
- Applicable on materials like metal, non-metal, ceramics, plastics, etc.,
- Permanent Marking Processing / Online- Marking Process
- Minimize damage to the product and enhance the quality
- High speed marking for mass production

### Samples:



|                             |                                                   |
|-----------------------------|---------------------------------------------------|
| SPECS/MODEL                 | AR/ F - 20/30/50/60/100                           |
| Power                       | 20 W to 100 W                                     |
| Wavelength                  | 1064 ±3 nm                                        |
| Beam Quality                | <1.2 (M2)                                         |
| Pulse Repetition Rate       | 20 - 400KHz                                       |
| Power Stability             | <±1%                                              |
| Focus Spot Diameter         | <0.05mm                                           |
| Working Area                | 70 X 70/100 X100/150 X 150/200 X 200/300 X 300 mm |
| Max marking Depth           | 1.2mm                                             |
| Max marking speed           | 1500 standard characters / second                 |
| Minimum Line Width          | 0.05mm                                            |
| Minimum Character           | 0.05mm                                            |
| Repetition Accuracy         | ±0.003 mm                                         |
| Cooling Mode                | Air cooling                                       |
| Ambient Temperature         | 15o- 35o C                                        |
| Power Requirement           | 220V/single phase/50Hz/<600W                      |
| Life of Laser Module        | >100000Hrs                                        |
| Guide Laser/Red Aiming Beam | Yes 660nm                                         |

## UV Laser Marking Machine



UV Laser Galvo Head



UV Laser Galvo Lens



UV Laser Marking Machine Desktop



EZ Card for Marking



UV Laser Marking Machine With Index Rotary

### Features:

- Low operating Cost & zero maintenance cost
- Applicable on materials like metal, non-metal, ceramics, plastics, etc.,
- Permanent Marking Processing / Online- Marking Process
- Minimize damage to the product and enhance the quality
- High speed marking for mass production

### Samples:



| SPECS/MODEL                 | AR/UV - 3W/5W/10W                                 |
|-----------------------------|---------------------------------------------------|
| Power                       | 3 W to 10 W                                       |
| Wavelength                  | 355 ±3 nm                                         |
| Beam Quality                | <1.2 (M2)                                         |
| Pulse Repetition Rate       | 20 - 200KHz                                       |
| Power Stability             | <±1%                                              |
| Focus Spot Diameter         | <0.05mm                                           |
| Working Area                | 70 X 70/100 X100/150 X 150/200 X 200/300 X 300 mm |
| Max marking Depth           | 1.2mm                                             |
| Max marking speed           | 1500 standard characters / second                 |
| Minimum Line Width          | 0.05mm                                            |
| Minimum Character           | 0.05mm                                            |
| Repetition Accuracy         | ±0.003 mm                                         |
| Cooling Mode                | Water Cooling/Air cooling                         |
| Ambient Temperature         | 15o- 35o C                                        |
| Power Requirement           | 220V/single phase/50Hz/<600W                      |
| Life of Laser Module        | >100000Hrs                                        |
| Guide Laser/Red Aiming Beam | Yes 355nm                                         |

## CQ Laser Marking Machine



CQ Laser Galvo Head CO<sub>2</sub>



Laser Galvo Lens



EZ Card for Marking



CQ Laser Marking Machine



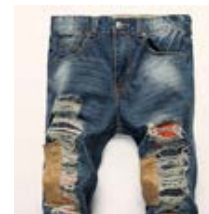
CQ Laser Marking Machine Customizable



### CQ Laser Marking Specifications

| SPECS/MODEL              | M - 10                    | M - 30           | M - 50           | M - 100          |
|--------------------------|---------------------------|------------------|------------------|------------------|
| Max Laser Power          | 10W                       | 30W              | 50W              | 100W             |
| Laser Wavelength         | 10.6 $\mu$ m              | 10.6 $\mu$ m     | 10.6 $\mu$ m     | 10.6 $\mu$ m     |
| Laser Repetitive Rate    | $\leq 20$ KHz             | $\leq 20$ KHz    | $\leq 20$ KHz    | $\leq 20$ KHz    |
| Marking Range            | 100 x 100 mm~300 x 300 mm |                  |                  |                  |
| Marking Depth            | $\leq 2$ mm               | $\leq 3$ mm      | $\leq 5$ mm      | $\leq 8$ mm      |
| Linear Speed             | $\leq 7000$ mm/s          | $\leq 7000$ mm/s | $\leq 7000$ mm/s | $\leq 7000$ mm/s |
| Min. Character           | 0.20 mm                   | 0.40 mm          | 0.40 mm          | 0.40 mm          |
| Minimum Linear Width     | 0.05 mm                   | 0.10 mm          | 0.15 mm          | 0.15 mm          |
| Repeatability            | $\pm 0.01$ mm             | $\pm 0.01$ mm    | $\pm 0.01$ mm    | $\pm 0.01$ mm    |
| Power Consumption        | 800 W                     | 1.2 KW           | 2 KW             | 4 KW             |
| Electricity Requirements | 220V/50Hz/3.5A            | 220V/50Hz/8A     | 220V/50Hz/11A    | 220V/50Hz/20A    |
| System Dimensions        | 1170x540x1180             | 1170x540x1180    | 1170x540x1180    | 1170x540x1180    |

### Samples:



### Galvo CQ Laser Marking Specifications

|                      |                                                                         |
|----------------------|-------------------------------------------------------------------------|
| SPECS/MODEL          | C -100/C - 150 / C - 250                                                |
| Laser type           | CQ RF metal laser tube                                                  |
| Laser power          | 100W / 150W / 250W                                                      |
| Working area         | 600 x 600mm                                                             |
| Working table        | Feeder Zn-Fe alloy honeycomb working table                              |
| Working speed        | Adjustable                                                              |
| Positioning Accuracy | $\pm 0.1$ mm                                                            |
| Motion system        | Online 3-D dynamic galvanometer motion control system, LCD screen       |
| Cooling system       | Constant temperature water chiller                                      |
| Power supply         | AC220V $\pm 5\%$ 50/60Hz / AC415V $\pm 5\%$ 50/60Hz                     |
| Format supported     | AI, BMP, PLT, DXF, DST etc                                              |
| Standard collocation | 2 sets of 1100W exhaust fans, foot switch, Red light positioning system |

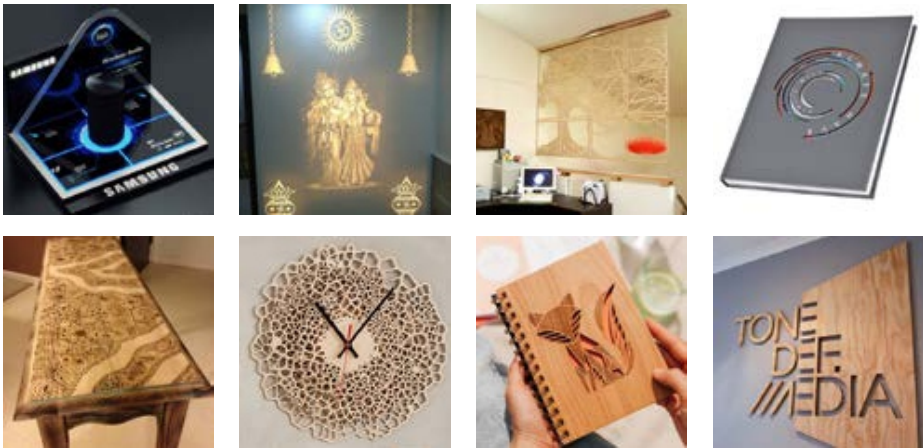
# Laser Engraving - Cutting Machine



## Features:

- High cng precision and positional accuracy
- Improved edge quality and surface finish
- Higher repeatability
- Advanced laser tools for material processing applications
- Drilling and engraving in addition to cutting
- Negligible workpiece degradation
- Cost-effectiveness
- Minimal thermal stress zone
- Shapes High Speed belt drive plotting unit with precise micro stepping drives
- Red beam pointer
- Z- Axis (Optional)

## Samples:



| SPECS/MODEL          | AccuCut 1325                                                              | AccuCut 1212 | AccuCut 1390 | AccuCut 6090 | AccuCut 6040 |
|----------------------|---------------------------------------------------------------------------|--------------|--------------|--------------|--------------|
| Working Area         | 1300x2500mm                                                               | 1200x1200mm  | 1300x900mm   | 600x900mm    | 600x400mm    |
| Laser Type           | Co2 DC Glass Laser Tube / RF Metal Laser Tube                             |              |              |              |              |
| Laser Power Option   | Glass Tube - 60/80/100/130/150 Watt<br>Metal Tube - 40/60/80/100/200 Watt |              |              |              |              |
| Wave Length          | 10.6 μm                                                                   |              |              |              |              |
| Supply Voltage       | AC 230 V ±0.05% / AC 415 V ±0.05%                                         |              |              |              |              |
| Reposition Accuracy  | 0.1 mm (Max)                                                              |              |              |              |              |
| Cutting Speed        | 0 ~ 30000 mm/min                                                          |              |              |              |              |
| Engraving Speed      | 0 ~ 64000 mm/min                                                          |              |              |              |              |
| X, Y Axis            | LM Guide Rails SIL Brand                                                  |              |              |              |              |
| Cooling              | AIR/Water Cooled                                                          |              |              |              |              |
| Work Environment     | Temp: 0 c ~ 45 c. Humidity: 5% ~ 95%                                      |              |              |              |              |
| Acceleration Speed   | 1 G                                                                       |              |              |              |              |
| Graphic File Support | PLT, CDR, AI, DWG, DST, DXF, BMP, JPEG, TIFF, GIF, PCX                    |              |              |              |              |

FLY Laser Marking Machine



Features:

- Low operating Cost & zero maintenance cost
- Applicable on materials like metal, non-metal, ceramics, plastics, etc.,
- Permanent Marking Processing / Online- Marking Process
- Minimize damage to the product and enhance the quality
- High speed marking for mass production

Fiber Fly Laser Marking Machine

|                             |                                                   |
|-----------------------------|---------------------------------------------------|
| SPECS/MODEL                 | AR/ F - 20/30/50/60/100                           |
| Power                       | 20 W to 100 W                                     |
| Wavelength                  | 1064 ±3 nm                                        |
| Beam Quality                | <1.2 (M2)                                         |
| Pulse Repetition Rate       | 20 - 400KHz                                       |
| Power Stability             | <±1%                                              |
| Focus Spot Diameter         | <0.05mm                                           |
| Working Area                | 70 X 70/100 X100/150 X 150/200 X 200/300 X 300 mm |
| Max marking Depth           | 1.2mm                                             |
| Max marking speed           | 1500 standard characters / second                 |
| Minimum Line Width          | 0.05mm                                            |
| Minimum Character           | 0.05mm                                            |
| Repetition Accuracy         | ±0.003 mm                                         |
| Cooling Mode                | Air cooling                                       |
| Ambient Temperature         | 15o- 35o C                                        |
| Power Requirement           | 220V/single phase/50Hz/<600W                      |
| Life of Laser Module        | >100000Hrs                                        |
| Guide Laser/Red Aiming Beam | Yes 650nm                                         |

Sample :



UV Fly Laser Marking Machine

|                             |                                                   |
|-----------------------------|---------------------------------------------------|
| SPECS/MODEL                 | AR/UV - 3W/5W/10W                                 |
| Power                       | 3 W to 10 W                                       |
| Wavelength                  | 355 ±3 nm                                         |
| Beam Quality                | <1.2 (M2)                                         |
| Pulse Repetition Rate       | 20 - 200KHz                                       |
| Power Stability             | <±1%                                              |
| Focus Spot Diameter         | <0.05mm                                           |
| Working Area                | 70 X 70/100 X100/150 X 150/200 X 200/300 X 300 mm |
| Max marking Depth           | 1.2mm                                             |
| Max marking speed           | 1500 standard characters / second                 |
| Minimum Line Width          | 0.05mm                                            |
| Minimum Character           | 0.05mm                                            |
| Repetition Accuracy         | ±0.003 mm                                         |
| Cooling Mode                | Water Cooling/Air cooling                         |
| Ambient Temperature         | 15o- 35o C                                        |
| Power Requirement           | 220V/single phase/50Hz/<600W                      |
| Life of Laser Module        | >100000Hrs                                        |
| Guide Laser/Red Aiming Beam |                                                   |

## Spares & Essentials

### Laser Source:



### Lens & Mirrors:



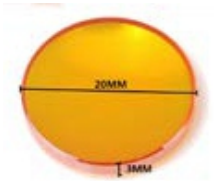
Fiber Galvo Lens



CO<sub>2</sub> Galvo Lens



CO<sub>2</sub> Laser Mirror



CO<sub>2</sub> Laser Lens

### Cutting & Marking Heads:



Fiber Marking Galvo Head



CO<sub>2</sub> Galvo Head



Co2 Cutting Head



Pillar Column



Galvo 9Scan Head

### CNC Controllers:



RDC Card for Engraving



EZ Card for Marking



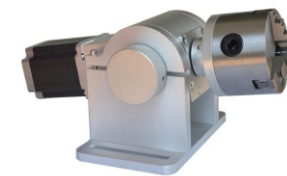
NC Studio Card for Router



### Air Compressors:



Index Rotary



Chuk Rotary



Roller Rotary



RED Light /Red Light Holder



LCD Handle