

ADN TECH

DISTRIBUIDOR EN MÉXICO



☎ (+52) 442 181 82 86
✉ contacto@adntech.mx
📍 querétaro, MÉXICO
🌐 www.adntech.mx

ESTUN
AUTOMATION

**ALL
MADE
BY ESTUN**

**ESTUN
INDUSTRIAL ROBOTS**



For a Better Life
让生活更美好！



ESTUN INDUSTRIAL ROBOTS

Close to the Scene For Deep Understanding of Various Complex Processes

ESTUN has always adhered to the strategy of "ALL Made by ESTUN", insisted on system-level forward R&D, with a self-sufficiency rate of over 95% for core robot components. ESTUN boasts a full range of 76 industrial robot products covering loads from 3 to 700kg. In the Chinese market, ESTUN has consistently ranked as the top domestic brand in robot shipments for many years. ESTUN collaborates with leading brands in automotive, photovoltaic, lithium battery, metal processing, electronics manufacturing, building materials and home furnishings, logistics packaging, food & beverage, rail transportation, construction machinery, special vehicles, shipbuilding and marine engineering, and aerospace industries to create benchmark smart manufacturing production lines and factories.

ESTUN INDUSTRIAL ROBOTS

Nanjing ESTUN Automation Co., Ltd., established in 1993, went public on the Shenzhen Stock Exchange in 2015 (stock code: 002747). ESTUN Automation has always adhered to its mission of "Automation for Everyone" and strives to achieve social value of "For a better life". The Company operates three core businesses: automation core components and motion control systems, industrial robots and intelligent manufacturing systems, and digital products and services.

With independent core technologies and excellent products and services, ESTUN Automation has become a leading enterprise in the domestic automation industry and a leading player in the domestic robot industry. Guided by the business philosophy of "Openness, Innovation and Co-growth", the Company works hand in hand with partners to promote the rapid development of China's intelligent and digital industries.

ESTUN Automation has established multiple subsidiaries and manufacturing bases nationwide and owns several wholly-owned or controlling companies overseas, including Trio in the United Kingdom, Cloos and M.A.i. in Germany. The Company has international competitive advantages in automation core components and motion control solutions, industrial robots and intelligent manufacturing solutions, welding robots and intelligent welding solutions.

In the future, ESTUN Automation will join forces with its partners to build a grand blueprint for the intelligent manufacturing industry. With the goal of becoming the leading brand in motion control systems domestically and creating a world-renowned brand for Chinese robots, ESTUN aims to become an internationally respected and globalized enterprise.

A better world deserves our utmost dedication.





ER3-400-SR

SCARA Series Industrial Robot

ER3-500-SR

SCARA Series Industrial Robot

ER6-500-SR

SCARA Series Industrial Robot

ER6-600-SR

SCARA Series Industrial Robot

ER6-700-SR

SCARA Series Industrial Robot

ER10-500-SR

SCARA Series Industrial Robot

ER10-600-SR

SCARA Series Industrial Robot

ER10-700-SR

SCARA Series Industrial Robot

ER10-800-SR

SCARA Series Industrial Robot

ER20-800-SR-HI

SCARA Series Industrial Robot

Number of Axes	4	4	4	4	4
Max. Load	3kg	3kg	6kg	6kg	6kg
Reach of Arm	400mm	500mm	500mm	600mm	700mm
Repeatability	J1+J2:±0.02mm J3:±0.01mm ; J4:±0.01°	J1+J2:±0.02mm J3:±0.01mm ; J4:±0.01°	J1+J2:±0.02mm J3:±0.01mm ; J4:±0.01°	J1+J2:±0.02mm J3:±0.01mm ; J4:±0.01°	J1+J2:±0.02mm J3:±0.01mm ; J4:±0.01°
Body Weight	13kg	14kg	18kg	18kg	19kg
IP Grade	IP20	IP20	IP20	IP20	IP20
Installation	Floor	Floor	Floor	Floor	Floor
Certifications Supported	CE、KCS	CE、KCS	CE、KCS	CE、KCS	CE、KCS

Motion Range	1-Axis	±132°	1-Axis	±132°	1-Axis	±132°	1-Axis	±132°	1-Axis	±132°
	2-Axis	±141°	2-Axis	±141°	2-Axis	±150°	2-Axis	±150°	2-Axis	±150°
	3-Axis	0~150mm	3-Axis	0~150mm	3-Axis	0~200mm	3-Axis	0~200mm	3-Axis	0~200mm
	4-Axis	±360°	4-Axis	±360°	4-Axis	±360°	4-Axis	±360°	4-Axis	±360°

Max. Velocity	1-Axis 720°/s	Resultant velocity	1-Axis 720°/s	Resultant velocity	1轴 450°/s	Resultant velocity	1-Axis 450°/s	Resultant velocity	1-Axis 450°/s	Resultant velocity
	2-Axis 720°/s	7225mm/s	2-Axis 720°/s	8480mm/s	2轴 720°/s	7050mm/s	2-Axis 720°/s	7770mm/s	2-Axis 720°/s	8488mm/s
	3-Axis	1280mm/s	3-Axis	1280mm/s	3轴	1130mm/s	3-Axis	1130mm/s	3-Axis	1130mm/s
	4-Axis	3000°/s	4-Axis	3000°/s	4轴	2300°/s	4-Axis	2300°/s	4-Axis	2300°/s

4	4	4	4	4
10kg	10kg	10kg	10kg	20kg
500mm	600mm	700mm	800mm	800mm
J1+J2:±0.02mm J3:±0.01mm ; J4:±0.01°	J1+J2:±0.02mm J3:±0.01mm ; J4:±0.01°	J1+J2:±0.02mm J3:±0.01mm ; J4:±0.01°	J1+J2:±0.02mm J3:±0.01mm ; J4:±0.01°	J1+J2:±0.02mm J3:±0.01mm ; J4:±0.01°
22kg	23kg	24kg	25kg	47kg
IP20	IP20	IP20	IP20	IP20
Floor	Floor	Floor	Floor	Floor
CE、KCS	CE、KCS	CE、KCS	CE、KCS	CE、KCS

1-Axis	±132°	1-Axis	±132°	1-Axis	±132°	1-Axis	±128°	1-Axis	±132°
2-Axis	±150°	2-Axis	±150°	2-Axis	±150°	2-Axis	±150°	2-Axis	±150°
3-Axis	0~200mm	3-Axis	0~200mm	3-Axis	0~200mm	3-Axis	0~200mm	3-Axis	0~420mm
4-Axis	±360°	4-Axis	±360°	4-Axis	±360°	4-Axis	±360°	4-Axis	±360°

1-Axis 450°/s	Resultant velocity	1-Axis 450°/s	Resultant velocity	1-Axis 450°/s	Resultant velocity	1-Axis 360°/s	Resultant velocity	1-Axis 360°/s	Resultant velocity
2-Axis 720°/s	7050mm/s	2-Axis 720°/s	7770mm/s	2-Axis 720°/s	7485mm/s	2-Axis 720°/s	8063mm/s	2-Axis 590°/s	9550mm/s
3-Axis	1350mm/s	3-Axis	1350mm/s	3-Axis	1350mm/s	3-Axis	1350mm/s	3-Axis	1220mm/s
4-Axis	705°/s	4-Axis	705°/s	4-Axis	705°/s	4-Axis	705°/s	4-Axis	705°/s



Number of Axes	4	4	4	4	6
Max. Load	20kg	20kg	20kg	50kg	7kg
Reach of Arm	1000mm	850mm	1000mm	1200mm	910mm
Repeatability	J1+J2:±0.02mm J3:±0.01mm ; J4:±0.01°	J1+J2:±0.02mm J3:±0.015mm ; J4:±0.01°	J1+J2:±0.02mm J3:±0.015mm ; J4:±0.01°	J1+J2:±0.02mm J3:±0.015mm ; J4:±0.01°	±0.03mm
Body Weight	50kg	58.5kg	60kg	145kg	48kg
IP Grade	IP20	IP54	IP54	IP54	IP67
Installation	Floor	Floor	Floor	Floor	Floor/Ceiling
Certifications Supported	CE、KCS	-	-	CE	CE

Motion Range	1-Axis	±132°	1-Axis	±165°	1-Axis	±165°	1-Axis	±165°	1-Axis	±170°
									2-Axis	-80° ~+135°
	2-Axis	±150°	2-Axis	±150°	2-Axis	±150°	2-Axis	±150°	3-Axis	-90° ~+65°
	3-Axis	0~420mm	3-Axis	0~400mm	3-Axis	0~400mm	3-Axis	0~400mm	4-Axis	±190°
									5-Axis	±120°
	4-Axis	±360°	4-Axis	±360°	4-Axis	±360°	4-Axis	±360°	6-Axis	±360°

Max. Velocity	1-Axis	360° /s	Resultant velocity 10806mm/s	1-Axis	353° /s	Resultant velocity 9666mm/s	1-Axis	353° /s	Resultant velocity 10590mm/s	1-Axis	225° /s	Resultant velocity 8220mm/s	1-Axis	420° /s
	2-Axis	590° /s		2-Axis	564° /s		2-Axis	564° /s		2-Axis	300° /s		2-Axis	380° /s
													3-Axis	450° /s
	3-Axis	1220mm/s		3-Axis	1120mm/s		3-Axis	1120mm/s		3-Axis	1220mm/s		4-Axis	550° /s
													5-Axis	500° /s
	4-Axis	705° /s		4-Axis	705° /s		4-Axis	705° /s		4-Axis	705° /s		6-Axis	850° /s

6	6	3	4	6
8kg	10kg	10kg	10kg	15kg
720mm	900mm	900mm	900mm	1430mm
±0.02mm	±0.03mm	±0.03mm	±0.03mm	±0.03mm
46kg	75kg	50kg	52kg	155kg
IP67	IP54	IP54	IP54	IP67
Floor/Ceiling	Floor/Ceiling	Ceiling	Ceiling	Floor/Ceiling
CE	CE	-	-	-

1-Axis	±170°	1-Axis	±176°	1-Axis	±140°	1-Axis	±140°	1-Axis	±170°
2-Axis	-80° ~+135°	2-Axis	±140°	2-Axis	-200° ~+70°	2-Axis	-200° ~+70°	2-Axis	±140°
3-Axis	-90° ~+65°	3-Axis	-200° ~+70°	3-Axis	±115°	3-Axis	±115°	3-Axis	-250° ~+70°
4-Axis	±190°	4-Axis	±173°			4-Axis	±360°	4-Axis	±210°
5-Axis	±120°	5-Axis	±130°					5-Axis	±130°
6-Axis	±360°	6-Axis	±360°					6-Axis	±360°

1-Axis	420° /s	1-Axis	350° /s	1-Axis	353° /s	1-Axis	320° /s	1-Axis	270° /s
2-Axis	380° /s	2-Axis	350° /s	2-Axis	355° /s	2-Axis	355° /s	2-Axis	250° /s
3-Axis	450° /s	3-Axis	355° /s	3-Axis	400° /s	3-Axis	400° /s	3-Axis	380° /s
4-Axis	550° /s	4-Axis	480° /s			4-Axis	480° /s	4-Axis	520° /s
5-Axis	500° /s	5-Axis	400° /s					5-Axis	460° /s
6-Axis	850° /s	6-Axis	500° /s					6-Axis	700° /s



ER20-1200-MI
MINI Series Industrial Robot



ER10-2010-HI
Small-Load Series Industrial Robot



ER12B-1510
Small-Load Series Industrial Robot



ER20B-1760
Small-Load Series Industrial Robot



ER35B-1810
Small-Load Series Industrial Robot



ER20B-2300-HI
Small-Load Series Industrial Robot



ER30B-2700
Small-Load Series Industrial Robot



ER50B-2100
Small-Load Series Industrial Robot



ER70B-2100
Small-Load Series Industrial Robot



ER100B-3000
Small-Load Series Industrial Robot

Number of Axes	6	6	6	6	6
Max. Load	20kg	10kg	12kg	20kg	35kg
Reach of Arm	1200mm	2010mm	1527mm	1756mm	1813mm
Repeatability	±0.03mm	±0.03mm	±0.03mm	±0.03mm	±0.04mm
Body Weight	148kg	275kg	164kg	273kg	277kg
IP Grade	IP67	Wrist IP65, Body IP54	Wrist IP67, Body IP54	Wrist IP65, Body IP54	Wrist IP65, Body IP54
Installation	Floor/Ceiling	Floor/Ceiling	Floor/Ceiling	Floor/Ceiling	Floor
Certifications Supported	-	CE	CE	CE	CE

Motion Range	1-Axis	±170°	1-Axis	±170°	1-Axis	±170°	1-Axis	±170°	1-Axis	±170°
	2-Axis	±140°	2-Axis	-100° ~+155°	2-Axis	-90° ~+155°	2-Axis	-100° ~+155°	2-Axis	-100° ~+155°
	3-Axis	-250° ~+70°	3-Axis	-160° ~+86°	3-Axis	-145° ~+85°	3-Axis	-160° ~+86°	3-Axis	-160° ~+86°
	4-Axis	±210°	4-Axis	±200°	4-Axis	±200°	4-Axis	±200°	4-Axis	±200°
	5-Axis	±130°	5-Axis	±135°	5-Axis	±135°	5-Axis	±135°	5-Axis	±130°
	6-Axis	±360°	6-Axis	±360°	6-Axis	±360°	6-Axis	±360°	6-Axis	±360°

Max. Velocity	1-Axis	270° /s	1-Axis	206° /s	1-Axis	242° /s	1-Axis	206° /s	1-Axis	206° /s
	2-Axis	250° /s	2-Axis	206° /s	2-Axis	242° /s	2-Axis	206° /s	2-Axis	206° /s
	3-Axis	380° /s	3-Axis	238° /s	3-Axis	283° /s	3-Axis	238° /s	3-Axis	238° /s
	4-Axis	520° /s	4-Axis	480° /s	4-Axis	480° /s	4-Axis	480° /s	4-Axis	480° /s
	5-Axis	450° /s	5-Axis	412° /s	5-Axis	412° /s	5-Axis	412° /s	5-Axis	330° /s
	6-Axis	700° /s	6-Axis	356° /s	6-Axis	705° /s	6-Axis	705° /s	6-Axis	407° /s

6	6	6	6	6
20kg	30kg	50kg	70kg	100kg
2300mm	2700mm	2110mm	2110mm	3000mm
±0.03mm	±0.05mm	±0.05mm	±0.05mm	±0.06mm
502kg	520kg	522kg	522kg	1053kg
IP54	Wrist IP65, Body IP54	Wrist IP65, Body IP54	Wrist IP65, Body IP54	Wrist IP65, Body IP54
Floor	Floor	Floor/Ceiling	Floor/Ceiling	Floor
CE	CE	CE	CE	CE

1-Axis	±180°	1-Axis	±180°	1-Axis	±180°	1-Axis	±180°	1-Axis	±180°
2-Axis	-90° ~+135°	2-Axis	-90° ~+135°	2-Axis	-90° ~+135°	2-Axis	-90° ~+135°	2-Axis	-60° ~+80°
3-Axis	-185° ~+80°	3-Axis	-185° ~+80°	3-Axis	-185° ~+80°	3-Axis	-185° ~+80°	3-Axis	-95° ~+80°
4-Axis	±200°	4-Axis	±200°	4-Axis	±200°	4-Axis	±200°	4-Axis	±200°
5-Axis	±130°	5-Axis	±130°	5-Axis	±130°	5-Axis	±130°	5-Axis	±130°
6-Axis	±360°	6-Axis	±360°	6-Axis	±360°	6-Axis	±360°	6-Axis	±360°

1-Axis	172° /s	1-Axis	172° /s	1-Axis	172° /s	1-Axis	172° /s	1-Axis	120° /s
2-Axis	119° /s	2-Axis	134° /s	2-Axis	119° /s	2-Axis	134° /s	2-Axis	110° /s
3-Axis	206° /s	3-Axis	186° /s	3-Axis	186° /s	3-Axis	186° /s	3-Axis	120° /s
4-Axis	255° /s	4-Axis	255° /s	4-Axis	255° /s	4-Axis	245° /s	4-Axis	140° /s
5-Axis	330° /s	5-Axis	330° /s	5-Axis	254° /s	5-Axis	245° /s	5-Axis	200° /s
6-Axis	407° /s	6-Axis	407° /s	6-Axis	366° /s	6-Axis	355° /s	6-Axis	285° /s



ER100B-3500-DW

Large Load Series Industrial Robot



ER130B-3200

Large Load Series Industrial Robot



ER160B-3200

Large Load Series Industrial Robot



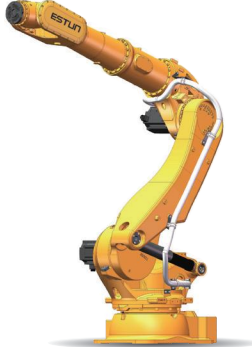
ER170B-2650

Large Load Series Industrial Robot



ER220B-2650

Large Load Series Industrial Robot



ER220-3100

Large Load Series Industrial Robot



ER270-2700

Large Load Series Industrial Robot



ER280-3200

Large Load Series Industrial Robot



ER350-3200

Large Load Series Industrial Robot



ER350-3300

Large Load Series Industrial Robot

Number of Axes	6	6	6	6	6
Max. Load	100kg	130kg	160kg	170kg	220kg
Reach of Arm	3500mm	3200mm	3200mm	2650mm	2650mm
Repeatability	±0.06mm	±0.06mm	±0.06mm	±0.06mm	±0.06mm
Body Weight	1050kg	1120kg	1150kg	1090kg	1120kg
IP Grade	Wrist IP65, Body IP54	Wrist IP65, Body IP54	Wrist IP65, Body IP54	Wrist IP65, Body IP54	Wrist IP65, Body IP54
Installation	Rack mounting	Floor	Floor	Floor	Floor
Certifications Supported	CE	CE	CE	CE	CE

Motion Range	1-Axis	±180°	1-Axis	±180°	1-Axis	±180°	1-Axis	±180°	1-Axis	±180°
	2-Axis	-40° ~+170°	2-Axis	-60° ~+80°	2-Axis	-60° ~+80°	2-Axis	-60° ~+80°	2-Axis	-60° ~+80°
	3-Axis	-95° ~+80°	3-Axis	-95° ~+80°	3-Axis	-95° ~+80°	3-Axis	-95° ~+80°	3-Axis	-95° ~+80°
	4-Axis	±200°	4-Axis	±250°	4-Axis	±250°	4-Axis	±200°	4-Axis	±200°
	5-Axis	±130°	5-Axis	±125°	5-Axis	±125°	5-Axis	±125°	5-Axis	±125°
	6-Axis	±360°	6-Axis	±360°	6-Axis	±360°	6-Axis	±360°	6-Axis	±360°

Max. Velocity	1-Axis	120° /s	1-Axis	128° /s	1-Axis	128° /s	1-Axis	120° /s	1-Axis	120° /s
	2-Axis	110° /s	2-Axis	110° /s	2-Axis	100° /s	2-Axis	110° /s	2-Axis	95° /s
	3-Axis	120° /s	3-Axis	120° /s	3-Axis	110° /s	3-Axis	120° /s	3-Axis	95° /s
	4-Axis	125° /s	4-Axis	165° /s	4-Axis	165° /s	4-Axis	205° /s	4-Axis	165° /s
	5-Axis	200° /s	5-Axis	200° /s	5-Axis	150° /s	5-Axis	220° /s	5-Axis	150° /s
	6-Axis	285° /s	6-Axis	220° /s	6-Axis	200° /s	6-Axis	310° /s	6-Axis	200° /s

6	6	6	6	6
220kg	270kg	280kg	350kg	350kg
3100mm	2700mm	3200mm	3200mm	3300mm
±0.06mm	±0.06mm	±0.06mm	±0.06mm	±0.1mm
1345kg	1350kg	1550kg	1850kg	2650kg
Wrist IP67, Body IP54	Wrist IP67, Body IP54	Wrist IP65, Body IP54	Wrist IP65, Body IP54	IP54
Floor	Floor	Floor	Floor	Floor
CE	CE	CE	-	CE

1-Axis	±180°	1-Axis	±180°	1-Axis	±180°	1-Axis	±180°	1-Axis	±180°
2-Axis	-60° ~+80°	2-Axis	-60° ~+80°	2-Axis	-60° ~+90°	2-Axis	-60° ~+90°	2-Axis	-60° ~+105°
3-Axis	-180° ~+80°	3-Axis	-180° ~+80°	3-Axis	-30° ~+125°	3-Axis	-30° ~+125°	3-Axis	-30° ~+125°
4-Axis	±360°	4-Axis	±360°	4-Axis	±200°	4-Axis	±200°	4-Axis	±200°
5-Axis	±125°	5-Axis	±125°	5-Axis	±125°	5-Axis	±125°	5-Axis	±115°
6-Axis	±360°	6-Axis	±360°	6-Axis	±360°	6-Axis	±360°	6-Axis	±360°

1-Axis	120° /s	1-Axis	120° /s	1-Axis	115° /s	1-Axis	120° /s	1-Axis	80° /s
2-Axis	100° /s	2-Axis	100° /s	2-Axis	100° /s	2-Axis	100° /s	2-Axis	100° /s
3-Axis	100° /s	3-Axis	100° /s	3-Axis	100° /s	3-Axis	100° /s	3-Axis	100° /s
4-Axis	170° /s	4-Axis	170° /s	4-Axis	175° /s	4-Axis	180° /s	4-Axis	114° /s
5-Axis	140° /s	5-Axis	140° /s	5-Axis	145° /s	5-Axis	130° /s	5-Axis	87° /s
6-Axis	210° /s	6-Axis	210° /s	6-Axis	200° /s	6-Axis	230° /s	6-Axis	158° /s



ER420-3300

Large Load Series Industrial Robot

ER500-2800

Large Load Series Industrial Robot

ER700-2800

Large Load Series Industrial Robot

ER45-2200-BD

Bending Series Industrial Robot

ER80B-2565-BD

Bending Series Industrial Robot

ER130-2865-BD

Bending Series Industrial Robot

ER60-2000-PL

Palletizing Series Industrial Robot

ER120-2400-PL

Palletizing Series Industrial Robot

ER180-3100-PL

Palletizing Series Industrial Robot

ER500-3200-PL

Palletizing Series Industrial Robot

Number of Axes	6	6	6	6	6
Max. Load	420kg	500kg	700kg	45kg	80kg
Reach of Arm	3300mm	2800mm	2800mm	2200mm	2565mm
Repeatability	±0.1mm	±0.1mm	±0.1mm	±0.03mm	±0.04mm
Body Weight	2980kg	1120kg	2930kg	520kg	730kg
IP Grade	IP54	IP54	IP54	IP54	IP54
Installation	Floor	Floor	Floor	Floor	Floor
Certifications Supported	-	CE	CE	CE	CE

Motion Range	1-Axis	±180°	1-Axis	±180°	1-Axis	±180°	1-Axis	±190°	1-Axis	±185°
	2-Axis	-60° ~ +105°	2-Axis	-60° ~ +105°	2-Axis	-60° ~ +105°	2-Axis	-70° ~ +110°	2-Axis	-67° ~ +150°
	3-Axis	-30° ~ +125°	3-Axis	-30° ~ +140°	3-Axis	-30° ~ +140°	3-Axis	-95° ~ +62°	3-Axis	-190° ~ +66°
	4-Axis	±200°	4-Axis	±200°	4-Axis	±200°	4-Axis	+200°	4-Axis	±200°
	5-Axis	±115°	5-Axis	±115°	5-Axis	±115°	5-Axis	±130°	5-Axis	±130°
	6-Axis	±360°	6-Axis	±360°	6-Axis	±360°	6-Axis	±360°	6-Axis	±360°

Max. Velocity	1-Axis	80° /s	1-Axis	80° /s	1-Axis	80° /s	1-Axis	172° /s	1-Axis	114° /s
	2-Axis	100° /s	2-Axis	100° /s	2-Axis	100° /s	2-Axis	119° /s	2-Axis	108° /s
	3-Axis	100° /s	3-Axis	100° /s	3-Axis	100° /s	3-Axis	193° /s	3-Axis	133° /s
	4-Axis	114° /s	4-Axis	114° /s	4-Axis	114° /s	4-Axis	296° /s	4-Axis	255° /s
	5-Axis	87° /s	5-Axis	87° /s	5-Axis	70° /s	5-Axis	247° /s	5-Axis	197° /s
	6-Axis	158° /s	6-Axis	158° /s	6-Axis	158° /s	6-Axis	355° /s	6-Axis	285° /s

6	4	4	4	4
130kg	60kg	120kg	180kg	500kg
2865mm	2000mm	2400mm	3060mm	3200mm
±0.04mm	±0.03mm	±0.04mm	±0.04mm	±0.1mm
950kg	500kg	1050kg	1120kg	2083kg
IP54	IP54	IP54	IP54	IP54
Floor	Floor	Floor	Floor	Floor
CE	CE	CE	CE	CE

1-Axis	±180°	1-Axis	±180°	1-Axis	±180°	1-Axis	±180°	1-Axis	±180°
2-Axis	-70° ~ +90°	2-Axis	-35° ~ +90°	2-Axis	-40° ~ +85°	2-Axis	-40° ~ +90°	2-Axis	-45° ~ +90°
3-Axis	-200° ~ +68°	3-Axis	-10° ~ +110°	3-Axis	-20° ~ +108°	3-Axis	-17° ~ +108°	3-Axis	-15° ~ +120°
4-Axis	±200°	4-Axis	±360°	4-Axis	±360°	4-Axis	±360°	4-Axis	±360°
5-Axis	±125°								
6-Axis	±360°								

1-Axis	112° /s	1-Axis	170° /s	1-Axis	114° /s	1-Axis	114° /s	1-Axis	85° /s
2-Axis	106° /s	2-Axis	148° /s	2-Axis	120° /s	2-Axis	108° /s	2-Axis	90° /s
3-Axis	106° /s	3-Axis	185° /s	3-Axis	149° /s	3-Axis	118° /s	3-Axis	90° /s
4-Axis	204° /s	4-Axis	285° /s	4-Axis	295° /s	4-Axis	295° /s	4-Axis	200° /s
5-Axis	198° /s								
6-Axis	212° /s								



ER8-1450-HW
Welding Series Industrial Robot

ER8-2000-HW
Welding Series Industrial Robot

ER8-1500-CW
Welding Series Industrial Robot

ER8-2000-CW
Welding Series Industrial Robot

ER15-1520-PR
Punching Series Industrial Robot

ER150-3200-PR
Punching Series Industrial Robot

ER30B-1810-P
High Protection Series Industrial Robot

ER50B-2100-P
High Protection Series Industrial Robot

ER170B-2650-P
High Protection Series Industrial Robot

Number of Axes	6	6	6	6
Max. Load	8kg	8kg	8kg	8kg
Reach of Arm	1445mm	2015mm	1527mm	2010mm
Repeatability	±0.08mm	±0.08mm	±0.05mm	±0.05mm
Body Weight	170kg	286kg	165kg	281kg
IP Grade	IP54	IP54	IP54	IP54
Installation	Floor/Ceiling	Floor/Ceiling	Floor/Ceiling	Floor/Ceiling
Certifications Supported	CE	CE	CE	CE

Motion Range	1-Axis	±170°	1-Axis	±170°	1-Axis	±170°	1-Axis	±170°
	2-Axis	-85° ~ +160°	2-Axis	-100° ~155°	2-Axis	-90° ~155°	2-Axis	-100° ~155°
	3-Axis	-150° ~ +85°	3-Axis	-160° ~86°	3-Axis	-145° ~85°	3-Axis	-160° ~86°
	4-Axis	±150°	4-Axis	±150°	4-Axis	±170°	4-Axis	±170°
	5-Axis	±135°	5-Axis	±135°	5-Axis	±135°	5-Axis	±135°
	6-Axis	±210°	6-Axis	±210°	6-Axis	±360°	6-Axis	±360°

Max. Velocity	1-Axis	240° /s	1-Axis	180° /s	1-Axis	242° /s	1-Axis	180° /s
	2-Axis	240° /s	2-Axis	180° /s	2-Axis	242° /s	2-Axis	180° /s
	3-Axis	260° /s	3-Axis	241° /s	3-Axis	283° /s	3-Axis	242° /s
	4-Axis	440° /s	4-Axis	430° /s	4-Axis	476° /s	4-Axis	480° /s
	5-Axis	400° /s	5-Axis	400° /s	5-Axis	412° /s	5-Axis	412° /s
	6-Axis	700° /s	6-Axis	640° /s	6-Axis	685° /s	6-Axis	705° /s

4	6	6	6	6
15kg	150kg	30kg	50kg	170kg
1520mm	3200mm	1813mm	2110mm	2650mm
±0.03mm	±0.06mm	±0.04mm	±0.08mm	±0.06mm
160kg	1350kg	284kg	550kg	1050kg
IP54	Wrist IP65, Body IP54	Wrist IP67, Body IP54	Wrist IP67, Body IP54	Wrist IP67, Body IP54
Floor	Floor	Floor	Floor	Floor
CE	-	CE	CE	CE

1-Axis	±180°	1-Axis	±180°	1-Axis	±170°	1-Axis	±180°	1-Axis	±180°
2-Axis	-40° ~+90°	2-Axis	-60° ~+80°	2-Axis	-100° ~+155°	2-Axis	-90° ~+135°	2-Axis	-60° ~+80°
3-Axis	-15° ~+105°	3-Axis	-180° ~+80°	3-Axis	-160° ~+86°	3-Axis	-185° ~+80°	3-Axis	-95° ~+80°
4-Axis	±360°	4-Axis	±300°	4-Axis	±200°	4-Axis	±200°	4-Axis	±200°
		5-Axis	±125°	5-Axis	±130°	5-Axis	±130°	5-Axis	±125°
		6-Axis	±360°	6-Axis	±360°	6-Axis	±360°	6-Axis	±360°

1-Axis	250° /s	1-Axis	120° /s	1-Axis	206° /s	1-Axis	172° /s	1-Axis	120° /s
2-Axis	215° /s	2-Axis	100° /s	2-Axis	206° /s	2-Axis	119° /s	2-Axis	110° /s
3-Axis	285° /s	3-Axis	100° /s	3-Axis	238° /s	3-Axis	186° /s	3-Axis	120° /s
4-Axis	450° /s	4-Axis	170° /s	4-Axis	480° /s	4-Axis	252° /s	4-Axis	205° /s
		5-Axis	160° /s	5-Axis	320° /s	5-Axis	247° /s	5-Axis	180° /s
		6-Axis	200° /s	6-Axis	407° /s	6-Axis	359° /s	6-Axis	215° /s



ER10-500-SR-C
Clean Series Industrial Robot



ER10-600-SR-C
Clean Series Industrial Robot



ER10-700-SR-C
Clean Series Industrial Robot



ER10-800-SR-C
Clean Series Industrial Robot



ER7-900-MI-PI-C
Clean Series Industrial Robot



ER8-720-MI-PI-C
Clean Series Industrial Robot



UNO-7-600-HP
UNO Series Industrial Robot



UNO-8-620-HS
UNO Series Industrial Robot



UNO-15-1430-HP
UNO Series Industrial Robot

Number of Axes	4	4	4	4
Max. Load	10kg	10kg	10kg	10kg
Reach of Arm	500mm	600mm	700mm	800mm
Repeatability	J1+J2:±0.02mm J3:±0.01mm ; J4:±0.01°	J1+J2:±0.02mm J3:±0.01mm ; J4:±0.01°	J1+J2:±0.02mm J3:±0.01mm ; J4:±0.01°	J1+J2:±0.02mm J3:±0.01mm ; J4:±0.01°
Body Weight	23kg	24kg	25kg	25kg
IP Grade	ISO Class 4	ISO Class 4	ISO Class 4	ISO Class 4
Installation	Floor	Floor	Floor	Floor
Certifications Supported	CE、KCS	CE、KCS	CE、KCS	CE、KCS

动作范围	1-Axis	±130°	1-Axis	±130°	1-Axis	±130°	1-Axis	±130°
	2-Axis	±150°	2-Axis	±150°	2-Axis	±150°	2-Axis	±150°
	3-Axis	0~200mm	3-Axis	0~200mm	3-Axis	0~200mm	3-Axis	0~200mm
	4-Axis	±360°	4-Axis	±360°	4-Axis	±360°	4-Axis	±360°

最大速度	1-Axis	450°/s	Resultant velocity	1-Axis	450°/s	Resultant velocity	1-Axis	450°/s	Resultant velocity			
	2-Axis	720°/s	7050mm/s	2-Axis	720°/s	7770mm/s	2-Axis	720°/s	7487mm/s	2-Axis	720°/s	8063mm/s
	3-Axis		1350mm/s	3-Axis		1350mm/s	3-Axis		1350mm/s	3-Axis		1350mm/s
	4-Axis		705° /s	4-Axis		705° /s	4-Axis		705° /s	4-Axis		705° /s

6	6	3	4	6
7kg	8kg	7kg	8kg	15kg
910mm	720mm	600mm	620mm	1430mm
±0.03mm	±0.02mm	J1+J2:±0.02mm J3:±0.015mm	J1+J2:±0.02mm J3:±0.01mm ; J4:±0.01°	±0.05mm
48kg	48kg	18kg	50kg	155kg
IP Grade: IP65 Cleanliness: ISO Class 5	IP Grade: IP65 Cleanliness: ISO Class 5	IP20	IP20	IP67
Floor/Ceiling	Floor/Ceiling	Floor	Floor	Floor
CE	CE	-	-	-

1-Axis	±170°	1-Axis	±170°	1-Axis	±132°	1-Axis	±150°	1-Axis	±170°
2-Axis	-80° ~+135°	2-Axis	-80° ~+135°			2-Axis	±150°	2-Axis	±140°
3-Axis	-90° ~+65°	3-Axis	-90° ~+65°	2-Axis	±150°	2-Axis	±150°	3-Axis	-250° ~ +70°
4-Axis	±190°	4-Axis	±190°	3-Axis	0~ 200mm	3-Axis	0~ 200mm	4-Axis	±210°
5-Axis	±120°	5-Axis	±120°					5-Axis	±130°
6-Axis	±360°	6-Axis	±360°			4-Axis	±360°	6-Axis	±360°

1-Axis	420° /s	1-Axis	420° /s	1-Axis	412° /s	Resultant velocity 7750mm/s	1-Axis	397° /s	Resultant velocity 7919mm/s	1-Axis	270° /s
2-Axis	380° /s	2-Axis	380° /s	2-Axis	720° /s		2-Axis	547° /s		2-Axis	250° /s
3-Axis	450° /s	3-Axis	450° /s							3-Axis	380° /s
4-Axis	550° /s	4-Axis	550° /s	3-Axis	1333.3mm/s		3-Axis	2500mm/s		4-Axis	520° /s
5-Axis	500° /s	5-Axis	500° /s							5-Axis	450° /s
6-Axis	850° /s	6-Axis	850° /s				4-Axis	2700° /s		6-Axis	700° /s



UNO-35-1810-HP

UNO Series Industrial Robot



UNO-220-2700-HR

UNO Series Industrial Robot



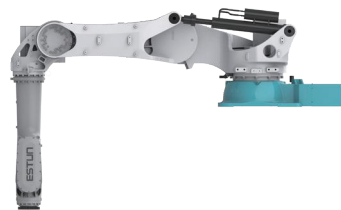
UNO-220-3100-HR

UNO Series Industrial Robot



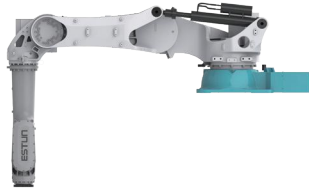
UNO-270-2700-HR

UNO Series Industrial Robot



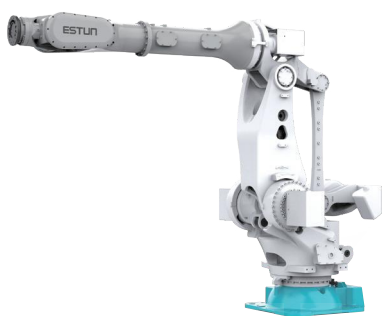
UNO-220-3100-DW

UNO Series Industrial Robot



UNO-270-3100-DW

UNO Series Industrial Robot



UNO-400-3700-P

UNO Series Industrial Robot



UNO-700-2800-AC

UNO Series Industrial Robot

Number of Axes	6	6	6	6
Max. Load	35kg	220kg	220kg	270kg
Reach of Arm	1813mm	2700mm	3100mm	2700mm
Repeatability	±0.04mm	±0.06mm	±0.06mm	±0.06mm
Body Weight	277kg	1320kg	1345kg	1350kg
IP Grade	Wrist IP65, Body IP54	Wrist IP67, Body IP54	Wrist IP67, Body IP54	Wrist IP67, Body IP54
Installation	Floor	Floor	Floor	Floor
Certifications Supported	-	-	-	-

Motion Range	1-Axis	±170°	1-Axis	±180°	1-Axis	±180°	1-Axis	±180°
	2-Axis	-100° ~ +155°	2-Axis	-60° ~ +80°	2-Axis	-60° ~ +80°	2-Axis	-60° ~ +80°
	3-Axis	-160° ~ +86°	3-Axis	-180° ~ +80°	3-Axis	-180° ~ +80°	3-Axis	-180° ~ +80°
	4-Axis	±200°	4-Axis	±360°	4-Axis	±360°	4-Axis	±360°
	5-Axis	±130°	5-Axis	±125°	5-Axis	±125°	5-Axis	±125°
	6-Axis	±360°	6-Axis	±360°	6-Axis	±360°	6-Axis	±360°

Max. Velocity	1-Axis	180° /s	1-Axis	120° /s	1-Axis	120° /s	1-Axis	120° /s
	2-Axis	180° /s	2-Axis	100° /s	2-Axis	100° /s	2-Axis	100° /s
	3-Axis	242° /s	3-Axis	100° /s	3-Axis	100° /s	3-Axis	100° /s
	4-Axis	480° /s	4-Axis	182° /s	4-Axis	182° /s	4-Axis	166° /s
	5-Axis	330° /s	5-Axis	175° /s	5-Axis	158° /s	5-Axis	140° /s
	6-Axis	407° /s	6-Axis	235° /s	6-Axis	195° /s	6-Axis	210° /s

6	6	6	6
220kg	270kg	400kg	700kg
3100mm	3100mm	3700mm	2800mm
±0.06mm	±0.06mm	±0.1mm	±0.1mm
1470kg	1500kg	3050kg	2930kg
Wrist IP67, Body IP65	Wrist IP67, Body IP65	Wrist IP67, Body IP65	IP54
Floor/Rack mounting	Floor/Rack mounting	Floor	Floor
-	-	-	-

1-Axis	±180°	1-Axis	±180°	1-Axis	±180°	1-Axis	±180°
2-Axis	-40° ~ +170°	2-Axis	-40° ~ +170°	2-Axis	-60° ~ +105°	2-Axis	-60° ~ +105°
3-Axis	-180° ~ +80°	3-Axis	-180° ~ +80°	3-Axis	-30° ~ +125°	3-Axis	-30° ~ +140°
4-Axis	±360°	4-Axis	±360°	4-Axis	±360°	4-Axis	±200°
5-Axis	±125°	5-Axis	±125°	5-Axis	±125°	5-Axis	±115°
6-Axis	±360°	6-Axis	±360°	6-Axis	±360°	6-Axis	±360°

1-Axis	118° /s	1-Axis	118° /s	1-Axis	77° /s	1-Axis	80° /s
2-Axis	112° /s	2-Axis	112° /s	2-Axis	100° /s	2-Axis	100° /s
3-Axis	95° /s	3-Axis	99° /s	3-Axis	100° /s	3-Axis	100° /s
4-Axis	166° /s	4-Axis	166° /s	4-Axis	114° /s	4-Axis	110° /s
5-Axis	158° /s	5-Axis	141° /s	5-Axis	104° /s	5-Axis	70° /s
6-Axis	212° /s	6-Axis	210° /s	6-Axis	168° /s	6-Axis	150° /s

CONTROL SYSTEM

ERC3-C Series Control Cabinet

- A next-generation integrated motion control system with comprehensive performance improvements;
- Volume reduced by more than 50% compared to the previous generation, with power density among the industry's best. Supports vertical, horizontal, and stacked installation for more flexible setup;
- Common DC bus design for energy saving and emission reduction;
- Supports online software upgrades, one-click parameter upload and download, with extensive external interfaces for easy customer wiring;
- Compatible with DI/DO, differential input ABZ, PN gateway, and various expansion cards for greater flexibility;
- Integration of advanced motion planning and vibration suppression algorithms for significantly improved precision and speed;
- Supports TCP/IP communication as well as mainstream bus communications like Profinet, EtherNet/IP, EtherCAT, and ModbusTCP.



ERT76-A Teach Pendant

- Designed with ergonomic principles for comfortable and lightweight operation;
- Fully Chinese display for a user-friendly interface;
- Dual-channel safety switches to ensure personnel safety during operation;
- Equipped with USB interface supporting import/export of teach programs;
- Compliant with IP54 protection rating, suitable for harsh operating environments.



ERC3-S Series Control Cabinet (Available in China)

- A next-generation integrated drive and control system to achieve high performance and high reliability;
- Volume reduced by over 50% compared to the previous generation, supporting vertical and stackable installation for increased flexibility;
- Common DC bus design for energy saving and emission reduction;
- Dual-cycle internal and external design achieving IP54 high protection rating;
- Safety stop function compliant with CE requirements, expanding usability scope;
- Brand-new industrial design enhancing safety, convenience, and comfort while improving aesthetics;
- Over 80% reduction in cabinet internal wiring harnesses, with a modular structure for easy disassembly and product maintenance;
- Integration of advanced motion planning and vibration suppression algorithms significantly enhancing precision and speed;
- Supports for TCP/IP communication as well as mainstream bus communications like Profinet, EtherNetIP, Ethercat, ModbusTCP, etc.



ESS Edition CE Functional Safety Products

- Safety stop;
- Safe speed monitoring;
- Safe position and area monitoring;
- Low-speed teach monitoring, 250mm/s speed monitoring;
- TCP end effector position and speed monitoring;
- Safety bus communication, supporting Profisafe, FSoE, CIP-Safety safety protocols;
- Robot certified by TÜV Rheinland, compliant with ISO10218-1 and EN13849;
- Functional safety level: PLd, Cat3.



ERS Series Electrical Cabinet

- Brand-new industrial design, enhancing safety, convenience, and comfort while improving aesthetics;
- Dual-cycle internal and external design achieving IP54 high protection rating;
- Modular design of internal electrical modules in the control cabinet, coupled with a new heat dissipation solution for improved cooling performance and higher stability;
- Integration of external axis cabinets into the control cabinet, saving on-site space;
- Specific enhancements for the automotive industry including profisafe, managed switches, independent 24V power supply, and aviation plug connections as optional features;
- Supports for TCP/IP communication as well as mainstream bus communications such as Profinet, EtherNetIP, Ethercat, ModbusTCP, etc.



Additional Axis Electrical Control Products

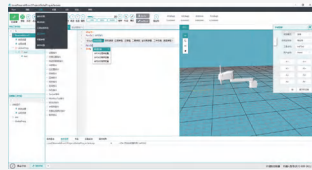
- Versatile applications: single axis, gantry axis, positioners, etc.;
- Flexible configuration: 1 to 3 drives can be housed in the same cabinet;
- Wide range of power options: includes 1KW to 7.5KW full series of custom servo drives and motors from Estun Robotics;
- Optional cable lengths: flexible interconnecting cables available in lengths from 5m to 30m;
- Convenient cabinet placement: allows installation on top of robot control cabinets without occupying additional space.



APPLICATION SOFTWARE

Offline programming software for PC--EstunEditor

ESTUN Robotics programming software adopts a modular design aimed at enhancing user-friendliness. The software offers two programming modes (text/graphical) to cater to different preferences. It provides abundant command prompts and allows users to conveniently write project programs using drag-and-drop graphical interfaces. The software also offers a user-friendly interface for controlling the robot and IO. Additionally, it features a simulation model that demonstrates the current posture of the robot. The software integrates Editor's proprietary visual software, script tools, virtual teaching pendant, and other tools. It includes multiple modules such as zero calibration, tool coordinate calibration, and user coordinate calibration to streamline the debugging process.



Application programming interface—ESTUN API

ESTUN API offers a comprehensive set of interface calling libraries for users to engage in secondary development and achieve control over robots. It provides support for multiple programming languages, including C++, C# and VB, catering to the diverse development needs of users.



Spot Welding

- Supports Profinet, EthernMP, and I/O communication protocols, compatible with various brands of ESTUN controllers;
- Dedicated spot-welding process interface and commands, simplifying user operations;
- Features electrode cap loss calculation and TCP automatic compensation, electrode holder deflection compensation, workpiece thickness detection, and pressure curve control, enhancing welding quality;
- Supports servo weld gun, pneumatic electrode holder, fixture, and servo weld gun quick change control, which improves system flexibility;
- High-performance dynamic control and path planning algorithms, to increase cycle time, reduce jitter, and enhance accuracy.



LASER WELDING

- Developed proprietary laser welding software with dedicated laser welding commands for convenient and efficient programming operations;
- Offers a wide range of laser welding process parameters to meet ODM customer application standards;
- Supports analog and digital signal interaction, with reserved EtherCAT communication interface for expandability to other communication methods;
- Features line laser seam finding and laser tracking capabilities for effective identification and tracking of weld seams;
- Enables coordinated control of laser welding parameters such as laser power and wire feeding speed, allowing segmented control of the welding process;
- Supports additional axis linked interpolation functionality.



Bending

- Supports two communication methods: I/O and Ethernet.
- The network communication mode is simple, eliminating the need for complex wiring.
- Enables real-time monitoring of bending machine signals, die parameters, bending speed, etc., allowing for accurate tracking of bending motion.
- Offers flexible layout, allowing for convenient operation without the need for recalibration when changing dies.
- Incorporates high-precision displacement sensors to achieve automatic feeding to ensure bending accuracy.



Gluing

- Compatible with popular gluing systems such as SCA and INTEC;
- User-friendly interface with flexible process configuration to meet various application requirements;
- Supports matching of gluing parameters with robot motion speed, allowing for real-time adjustment of gluing parameters to meet quality requirements;
- Provides real-time monitoring through communication, allowing for the inspection of gluing status, flow rate, gas curves, etc.;
- The first domestically developed gluing software package, catering to gluing applications in industries such as automotive and lithium batteries.



Palletizing

- Utilizes a graphical interface design for simple and efficient operation;
- Includes commonly used pallet patterns for easy debugging and supports configuration for complex and custom pallet patterns;
- Built-in palletizing program templates and pre-installed template programs eliminate the need for programming, and use of real-time monitoring makes it easy for users to understand system status.



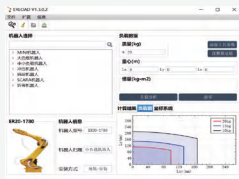
Pressing

- User-friendly interface with flexible process configuration to meet various application requirements;
- Incorporates safety detection mechanisms to ensure safe interaction between robots and equipment;
- Equipped with high-performance dynamic models, new speed planning, and vibration suppression algorithms, significantly improving operation cycle time and increasing user productivity.



Load assessment software—ERLOAD

It supports the evaluation of the load capacity for ESTUN's full range of robots. By inputting parameters such as mass, center of gravity and inertia, users can determine whether the selected robot model is suitable and achieve efficient selection.



PC-based teach pendant software—ERTEACH

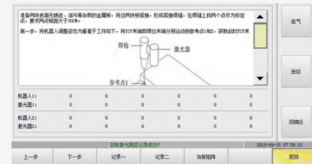
ERTEACH is a PC-based teach pendant software that facilitates user-friendly programming and program viewing.



PROCESS SOFTWARE

ESTUN ARC WELDING

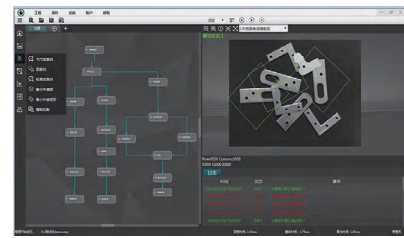
- Supports multiple welding machine communication protocols such as CANopen, CAN, and I/O, adaptable to various mainstream welding machines;
- Provides advanced functionalities including current and voltage monitoring, wire sticking detection with auto-clearing, arc restart, arc backtracking, arc retry, 3D weaving, intermittent welding, positioner collaboration, multi-station scheduling, and power-off recovery;
- Features laser locating and tracking capabilities for precise positioning and real-time tracking of small radius arcs, enhancing welding quality while reducing demands on workpiece consistency;
- Includes an API interface library with arc welding-specific interfaces, catering to customized robot motion control requirements and seamless integration with customer-specific logic or products;
- Supports OPC UA data monitoring, enabling remote arc welding data monitoring when combined with relevant hardware.



VISION PRODUCT SERIES

ESTUN Vision

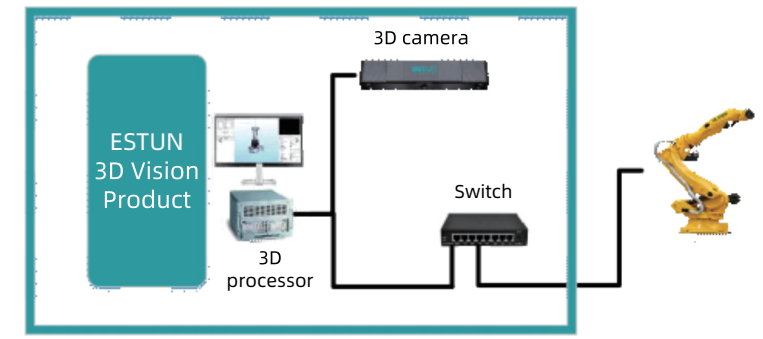
ESVision is a powerful 2D machine vision software that integrates various algorithm components for machine vision applications. It can be quickly configured to perform tasks such as object detection, measurement, and defect detection on workpieces or objects under test. Leveraging ESTUN's years of expertise in algorithm technology, the platform boasts a robust library of vision analysis tools, to enable the easy and flexible development of machine vision applications. It can fulfill various requirements in material recognition, locating and sorting, conveyor tracking, measurement, QR code/barcode/character recognition, and inspection in the field of machine vision. It offers abundant features, stable performance and a user-friendly interface. Communication protocols such as TCP/IP, I/O and serial ports are supported, facilitating seamless data interaction with robots, PLCs, and peripheral devices.



ESTUN 2D Vision System Components:

Hardware: Industrial camera, lens, light source, vision processor, switch, matching cables, security lock, etc.
Software: ESTUN 2D Vision System Software - ESVision2D

3D VISION



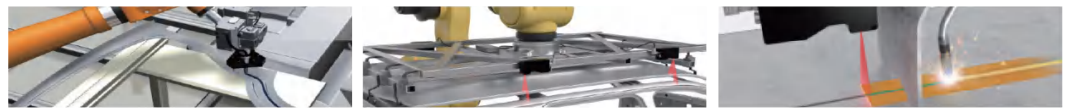
ESTUN 3D Vision System Components:

Hardware: 3D industrial camera, 3D vision processor, switch, matching cables
Software: ESTUN 3D Vision System Software

3D Vision Random Picking



3D Vision Trajectory Guidance



3D Vision Online Quality Inspection



Complete Vision Solution of ESTUN



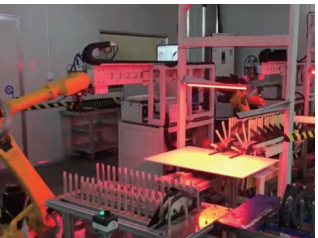
Recognition and Grasping of Condenser Tubes



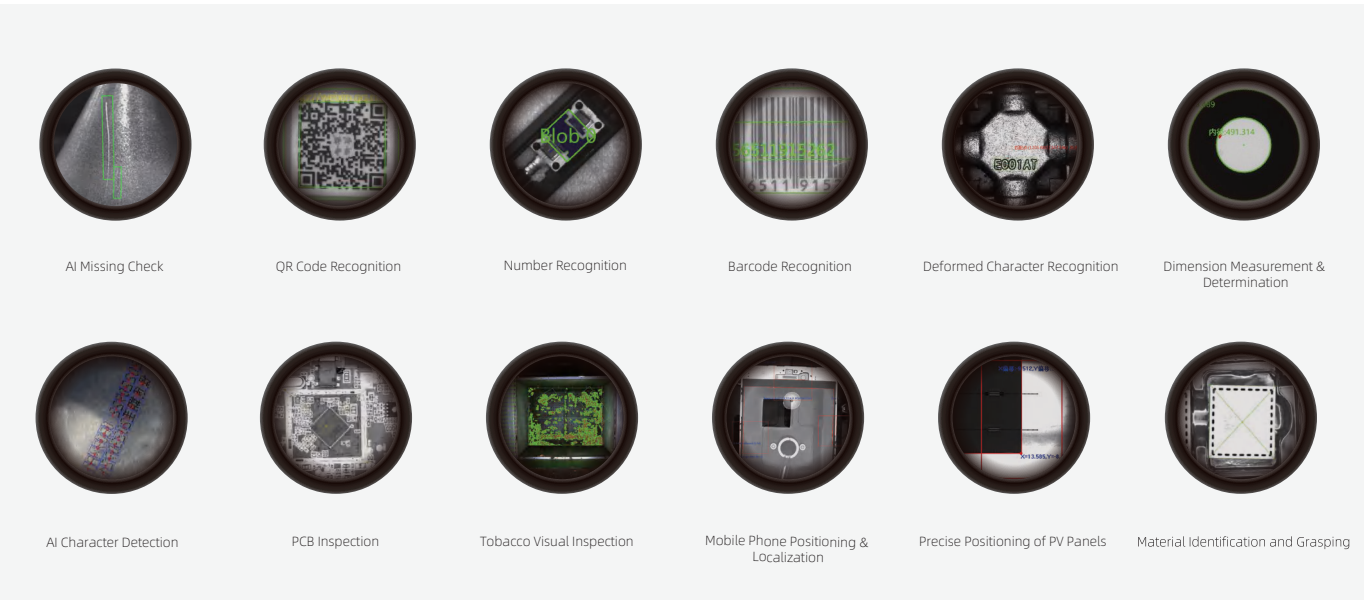
3D Bin-Picking



PV Panel Layout Application

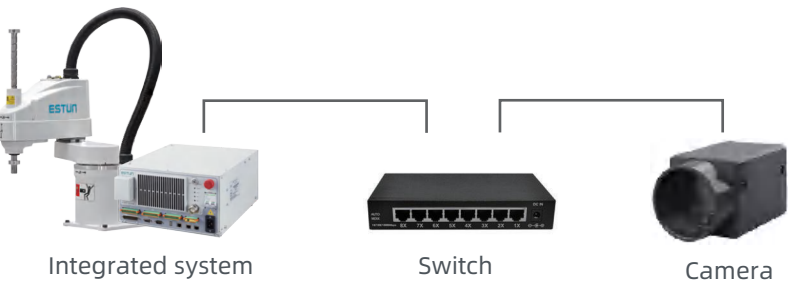


Vision-Guided Gluing



Integrated Solution for Visual Control

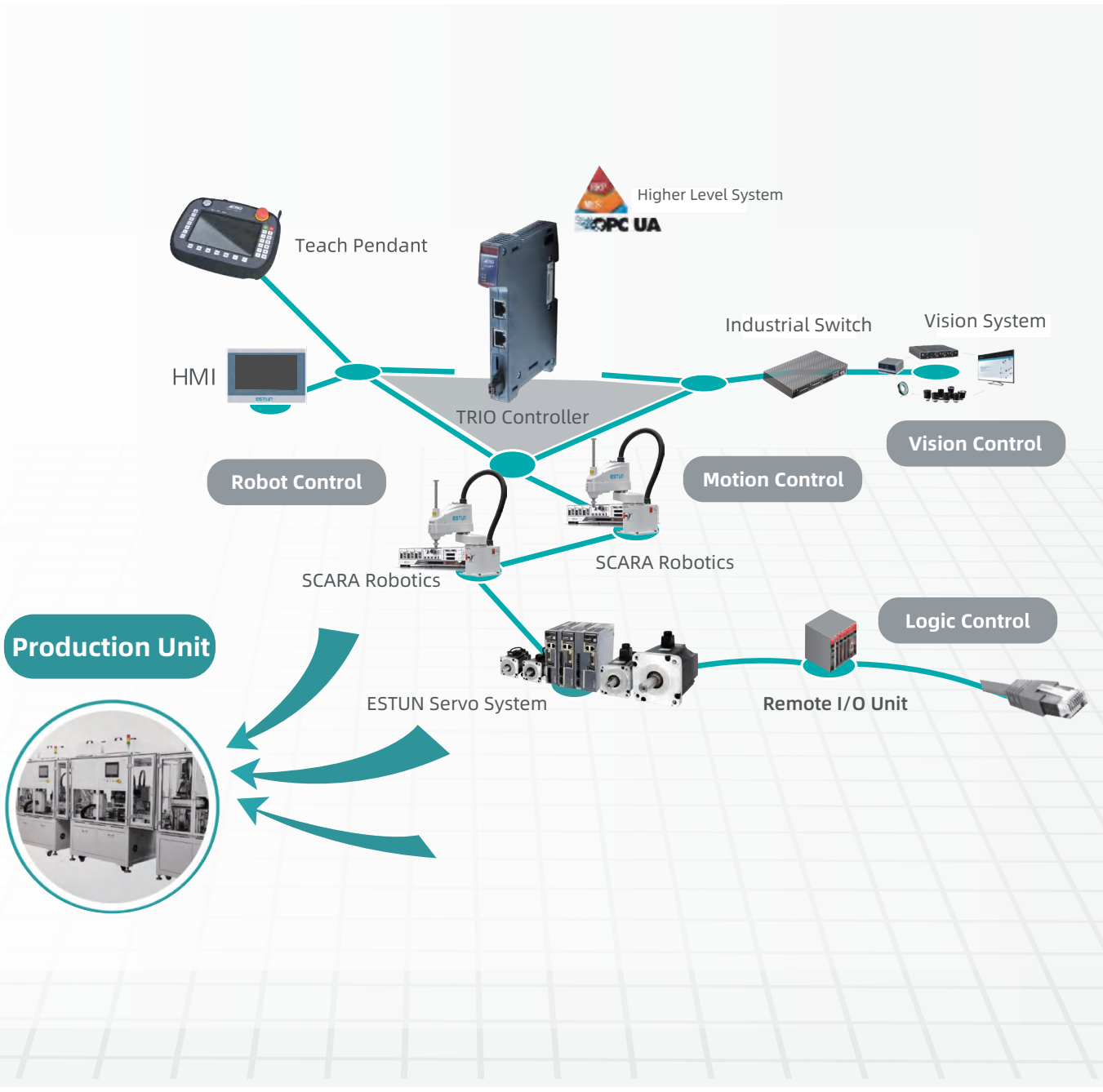
By integrating the vision software with the robot control system, the system adopts a Client-Server (CS) architecture. The server-side is deployed on the robot controller to handle vision algorithm processing and robot data exchange. The client-side is deployed on the user's computer, allowing the user to configure projects, monitor the server's runtime status, and view image processing results in real time.



- Cost reduction for the entire vision and robot solution.
- Improved stability in communication between vision and robot systems.
- 20% reduction in communication latency between vision and robot systems.
- Simplified overall system architecture.

COMPLETE SOLUTION FOR INTELLIGENT UNITS

The Intelligent Control Unit is based on the full range of ESTUN products. With the powerful motion controller from TRIO as its core, it integrates ESTUN robots, servo systems, and vision systems. With just one TRIO controller, robot control, external axis control, and logic control can be achieved. Leveraging the TRIO Motion Perfect software platform, it enables informationization and digital interconnection. It allows you to quickly build a complete solution for intelligent automation, from standalone machines to production lines. It also meets the requirements of customer automation lines for flexibility, modularization and miniaturization of automation equipment.



Advantages of the Solution

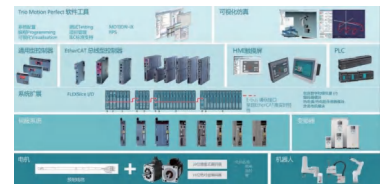
Improvement of Efficiency

- When multiple robots are deployed on the equipment, a single TRIO controller can achieve simultaneous control, facilitating multi-machine coordination and easy collision avoidance, thereby quickly enhancing cycle times;
- When the equipment includes both robots and external axes, a single TRIO controller can coordinate the robots and external axes for synchronized control, significantly improving cycle times, especially in dynamic picking and multi-axis interpolation scenarios;



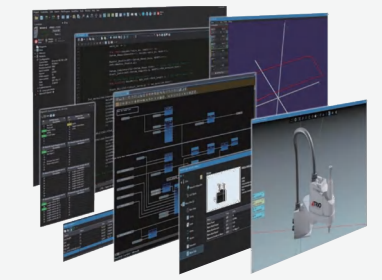
Optimized Solution

- It includes SCARA robots and external axes in the equipment can eliminate the need for an additional PLC, which reduces the need for PLC development and debugging personnel;
- Multiple SCARA robots in the equipment can reduce the number of robot controllers required;
- With one-stop service for motion control, servo systems, robots, and vision, the development cycle is shortened, and cost-effectiveness is increased;
- ESTUN's O&M Wizard can provide remote after-sales service and data analysis of the robot's processing, unlocking the value of equipment operation data to reduce costs and increase efficiency for enterprises.



User-Friendly Software

- The wizard-style interface offers convenient configuration, easy-to-use simulation teaching, and online programming;
- Motion Perfect software supports efficient offline simulation, allowing for early cycle and interference simulations;
- It includes various process packages, supporting multiple applications for rapid deployment and delivery;
- Advanced language support allows for the use of C# and C++ to control robots and servo axes via API, eliminating the need to learn additional languages and integrating robot control and motion control functions into user software.



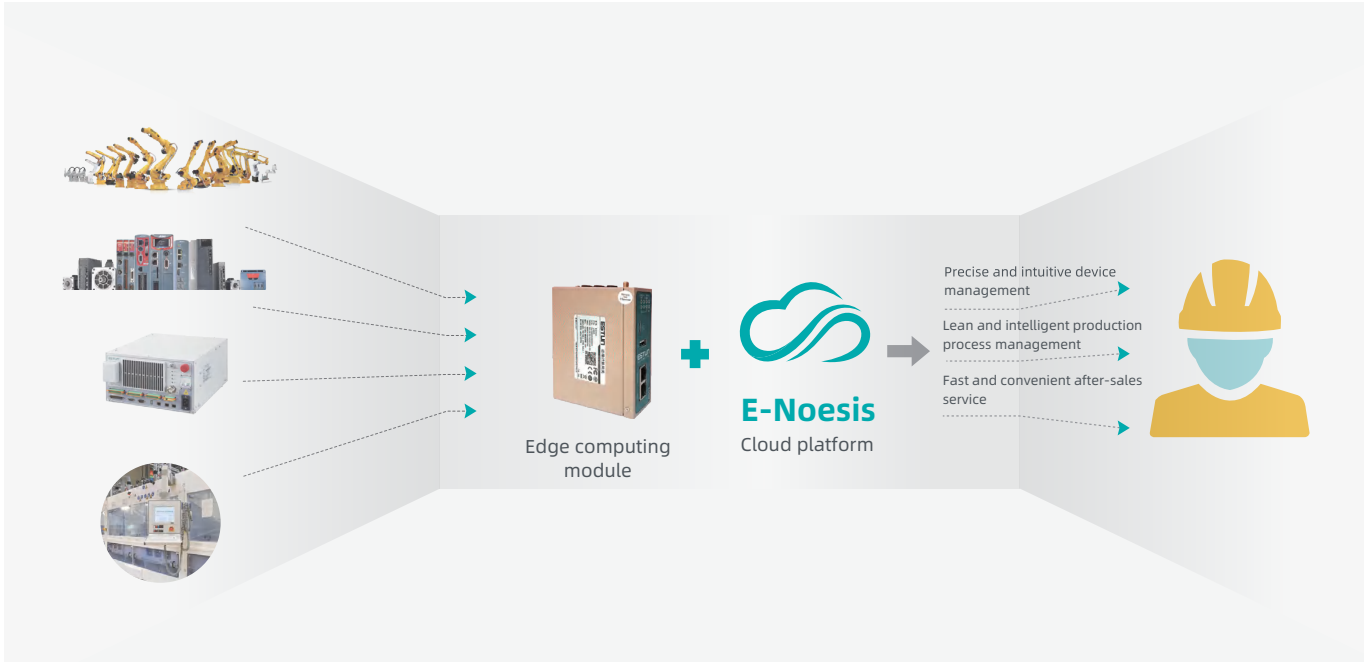
Rich Algorithms

- The intelligent control unit combines Trio's 30 years of expertise in motion control, enabling the realization of complex, efficient, and high-precision motion control functions. It achieves the perfect integration of robot control and motion control.

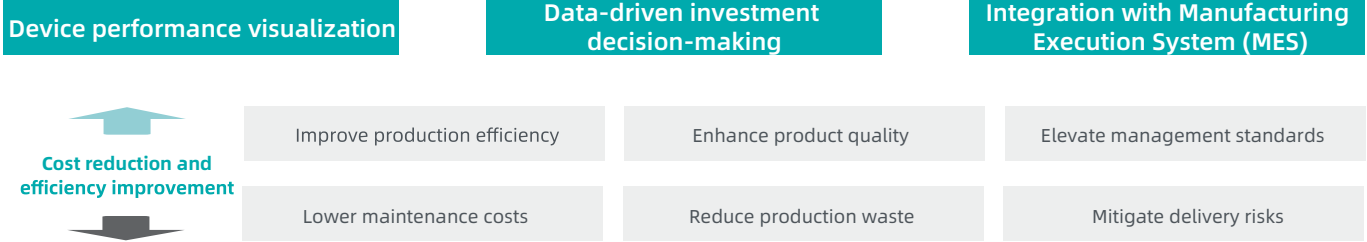


ESTUN MAINTENANCE ELF

Establish a seamless data channel between devices and management, thoroughly explore the value of operational data from devices, and achieve cost reduction and efficiency improvement for enterprises.



Equipment Management



Online quality determination

By utilizing edge data collection gateways, **real-time data is collected** to **monitor** the machining quality of devices. The results of process quality determination are **uploaded to the cloud**, allowing users to remotely access quality assessment reports and historical processing records.

Online quality prediction

Based on the standard Statistical Process Control (SPC) algorithm, **real-time collection and analysis of critical process data are performed**. This allows for a **scientific differentiation between random fluctuations and abnormal fluctuations in product process quality**. It also enables the detection of abnormal trends during the production process and provides early warnings. Furthermore, **dynamic adjustments** are made to the factors contributing to abnormal fluctuations.

After-Sale Service

Alert Notifications

Based on in-depth research across various industries and extensive application throughout the industry, ESTUN has developed an exclusive industry knowledge base. Leveraging ESTUN's competitive advantage across the entire industry chain, it can achieve **100% identification of robot failures and precise localization**, resulting in more specific and accurate alarm descriptions.



Remote Services

- Remote VNC service
- 24/7 personal concierge service
- Reduce the involvement of device maintenance personnel



Selection of O&M ELF Products

Standard Edition



Remote after-sales service for robots

- Robot equipment maintenance reminders
- Robot alarm notifications
- Remote diagnosis of robot failures
- Remote upgrade of robot systems



Device performance visualization

- Equipment uptime
- Equipment operational efficiency
- Value-added operational efficiency of equipment

Professional Edition



Online quality determination

- Determination rules based on process settings
- Traceability of determination results
- Customizable prediction models
- Visualization of determination results
- Standardization of quality reports
- Customizable prediction rules



SPC online quality prediction

Smart Edition



Integration with MES, EMS, WMS

- Standard data model
- Customized interfaces based on specific needs



Personalized customization

- Customization of calculation models
- Customization of visualizations

We also offer high-end motion control solutions for the industry

As a leading enterprise in China's intelligent manufacturing industry, ESTUN cultivates and operates two advantageous brands in the motion control field: ESTUN and TRIO. Leveraging a comprehensive product line, ESTUN has developed high-performance motion control solutions tailored to various application scenarios, covering the complete product series from the information layer, control layer, drive layer, to the execution layer. This provides partners with a broader range of solution options. Our product offerings include CNC systems, HMIs, a full range of AC servo systems from 50W to 200kW, linear drives, multiple series of high-end TRIO motion controllers, Motion PLCs, IoT modules, and more. We are committed to delivering efficient, precise, and comprehensive motion control solutions, facilitating the manufacturing industry's transition towards automation, intelligence, and digitalization.

ESTUN

