

SWEDEN

— BEACH PALACE —

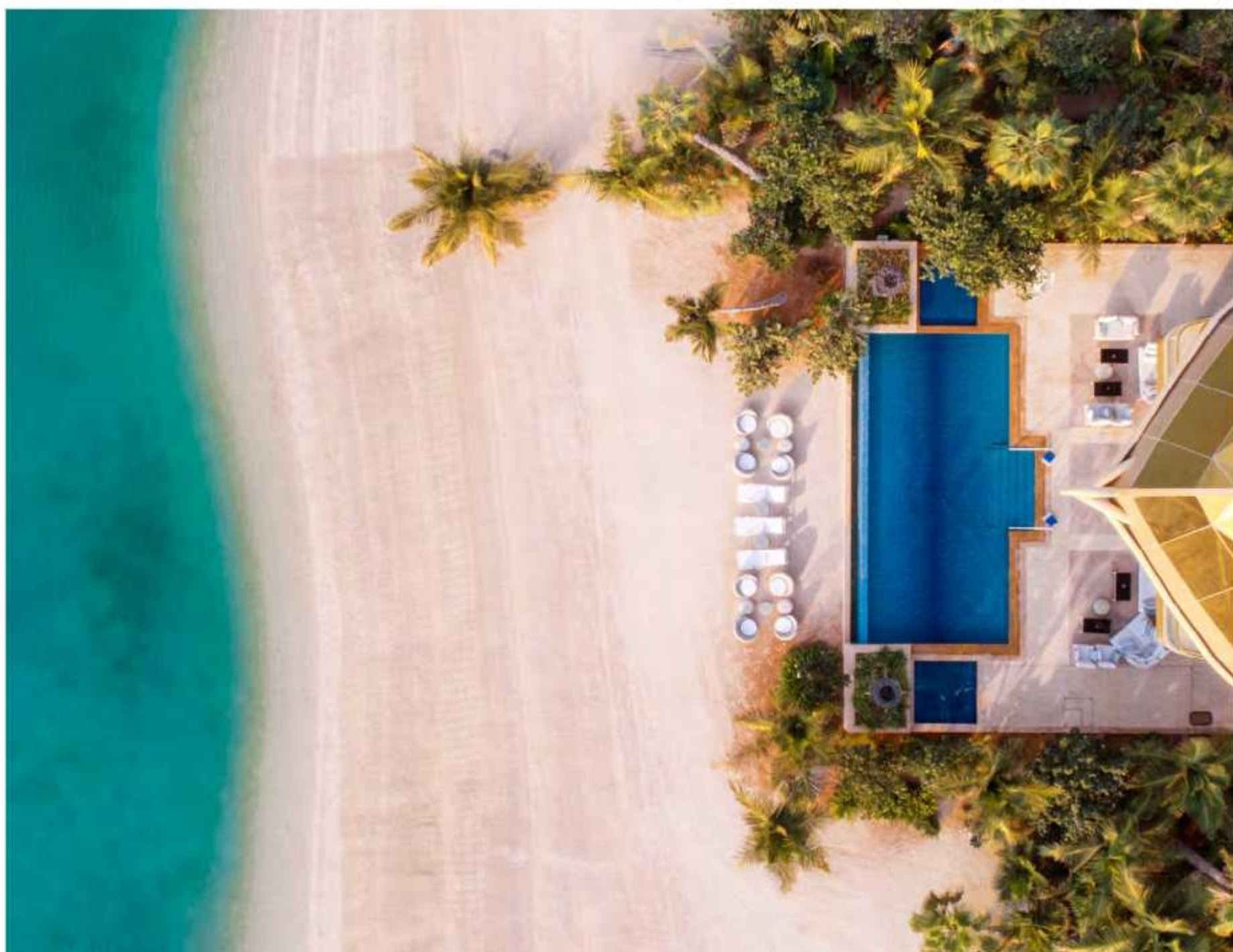


CHAPTER 1



Own the beach the sea and the corals

Sweden Island's shoreline will boast 10 prestigious beach-front palaces inspired by the beautifully crafted and intricate structure of inverted Swedish Viking vessels.







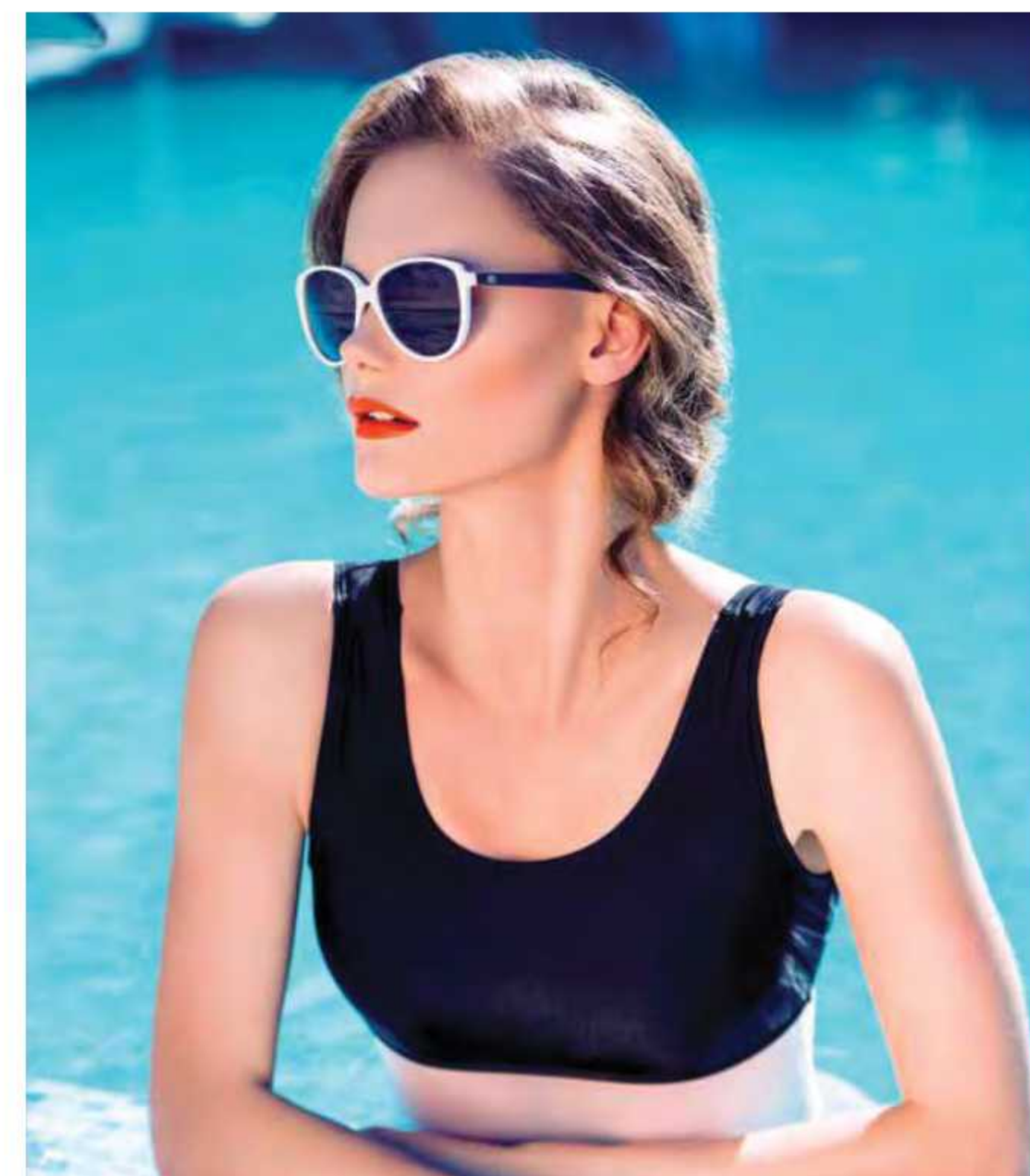
A tropical paradise covered in lush green landscapes that reach out to the beautiful beachfront.





Exotic and beautiful coloured birds have been known to sing in this paradise.









Beauty is
defined







CHAPTER 2

Inspired by legend

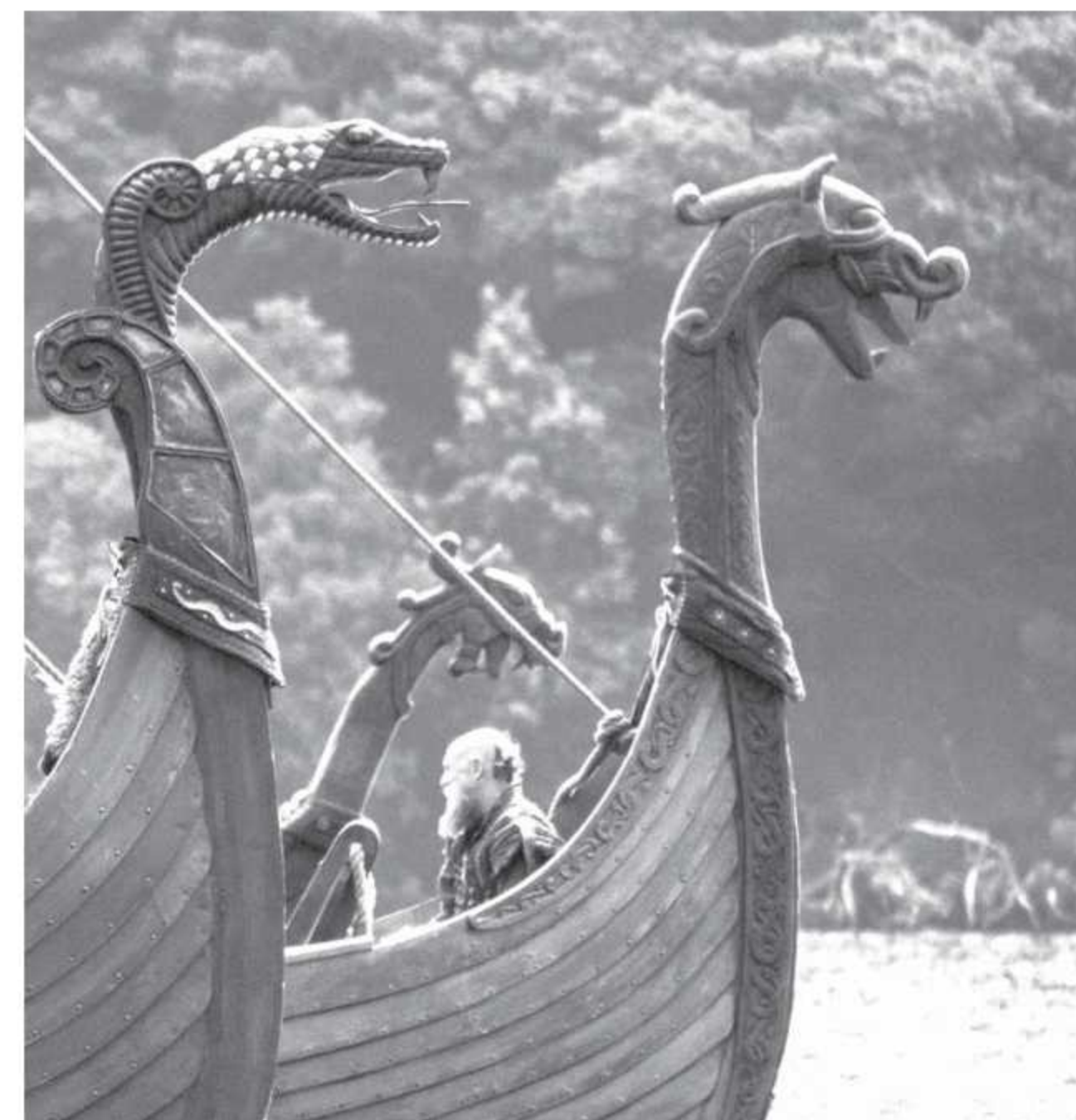
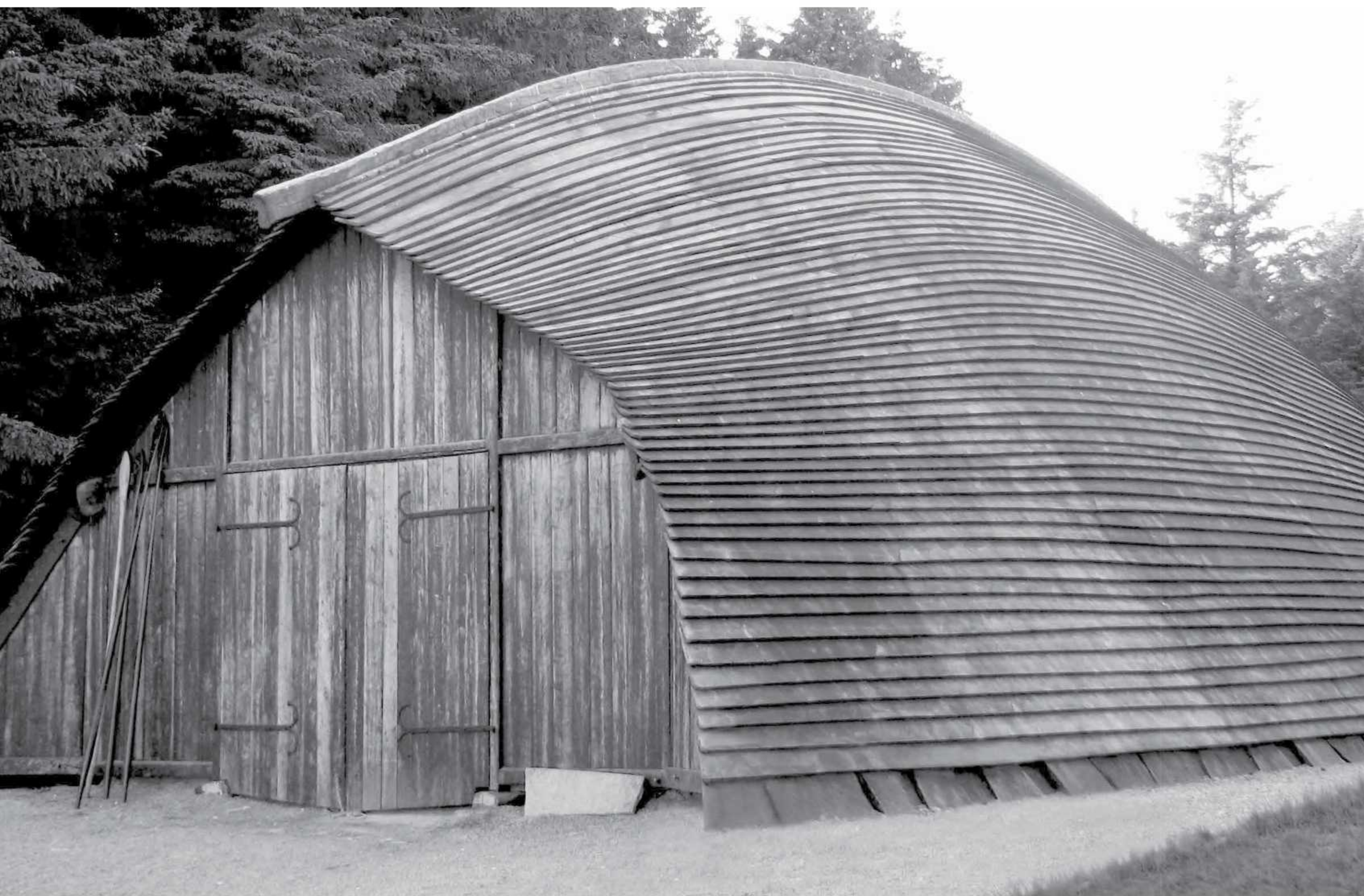
Legend has it that 10 Viking ships set out from their native homeland in search of new land and adventure. All 10 ships were lost in the Arabian sea and this is a resurrection of their beautiful craftsmanship.

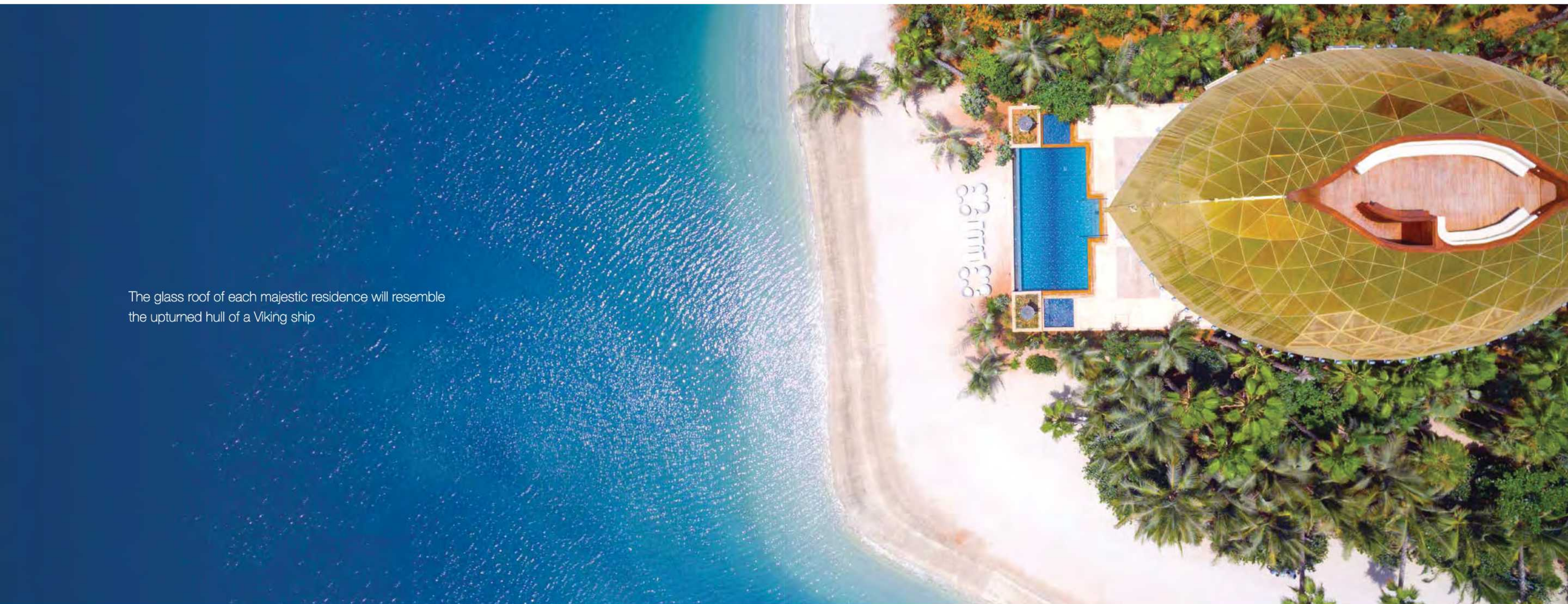






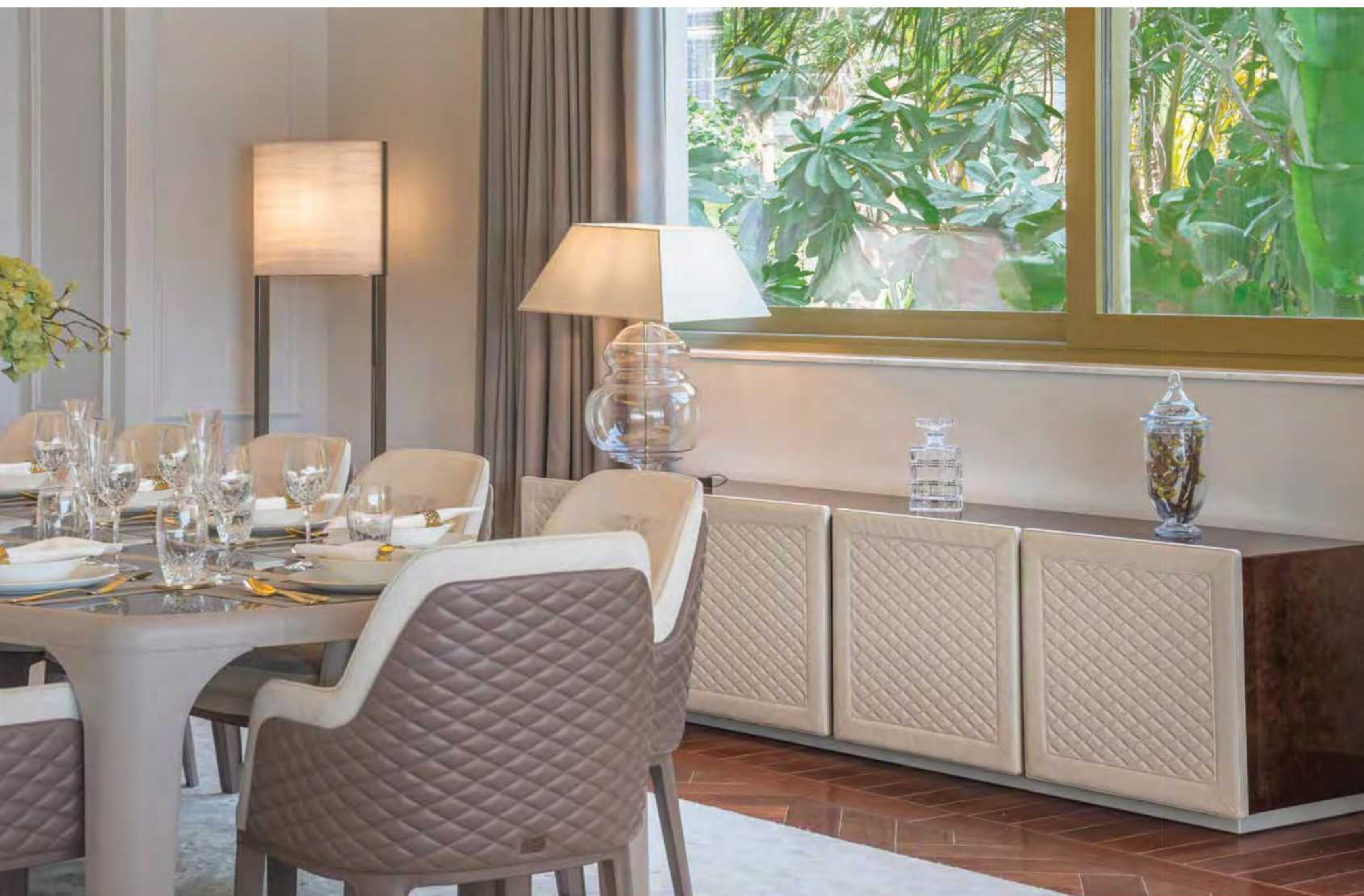






The glass roof of each majestic residence will resemble the upturned hull of a Viking ship

CHAPTER 3



Crafted in excellence

Across all 7 floors of the palace including the "Viking sky terrace", every detail has been considered to ensure that the experience living here is unforgettable.





Art is
all about
craftsmanship







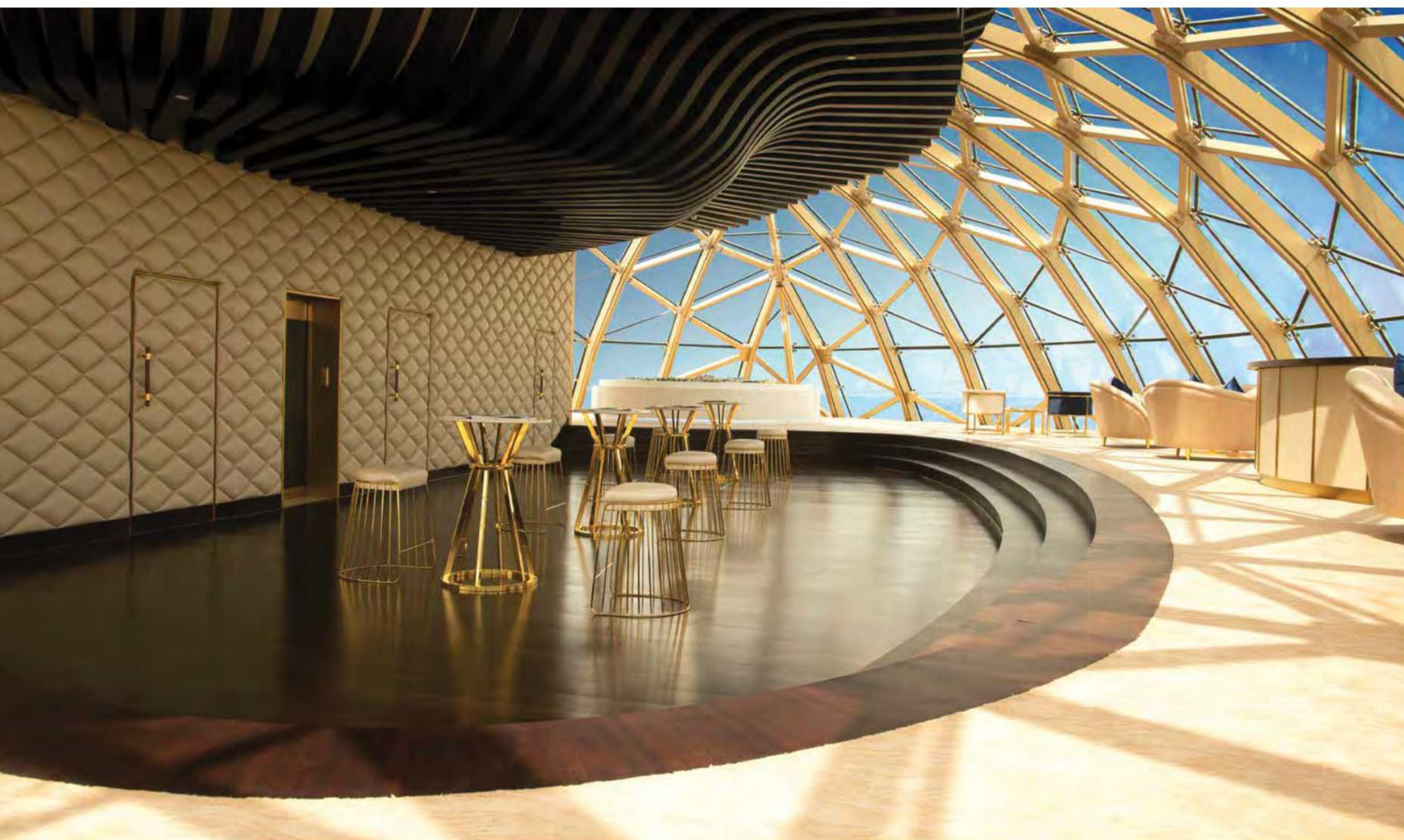












CHAPTER 4



The Bentley touch

Combining traditional and modernist interior with hand crafted furniture inspired by materials and luxurious finishes synonymous with Bentley car interiors.



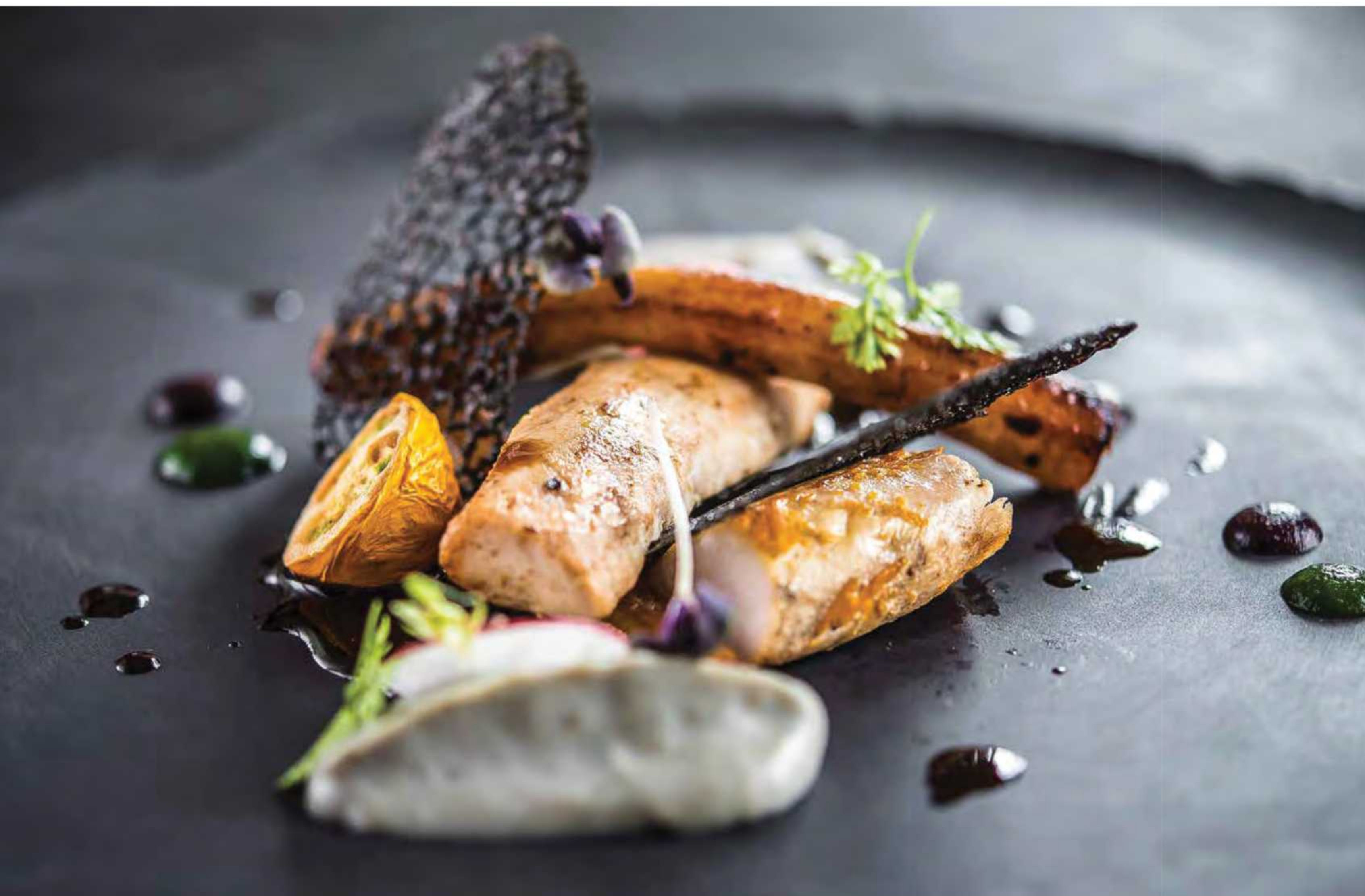


Discover
the art of
class





CHAPTER 5



Dine exquisitely

If you are to eat, then eat well.



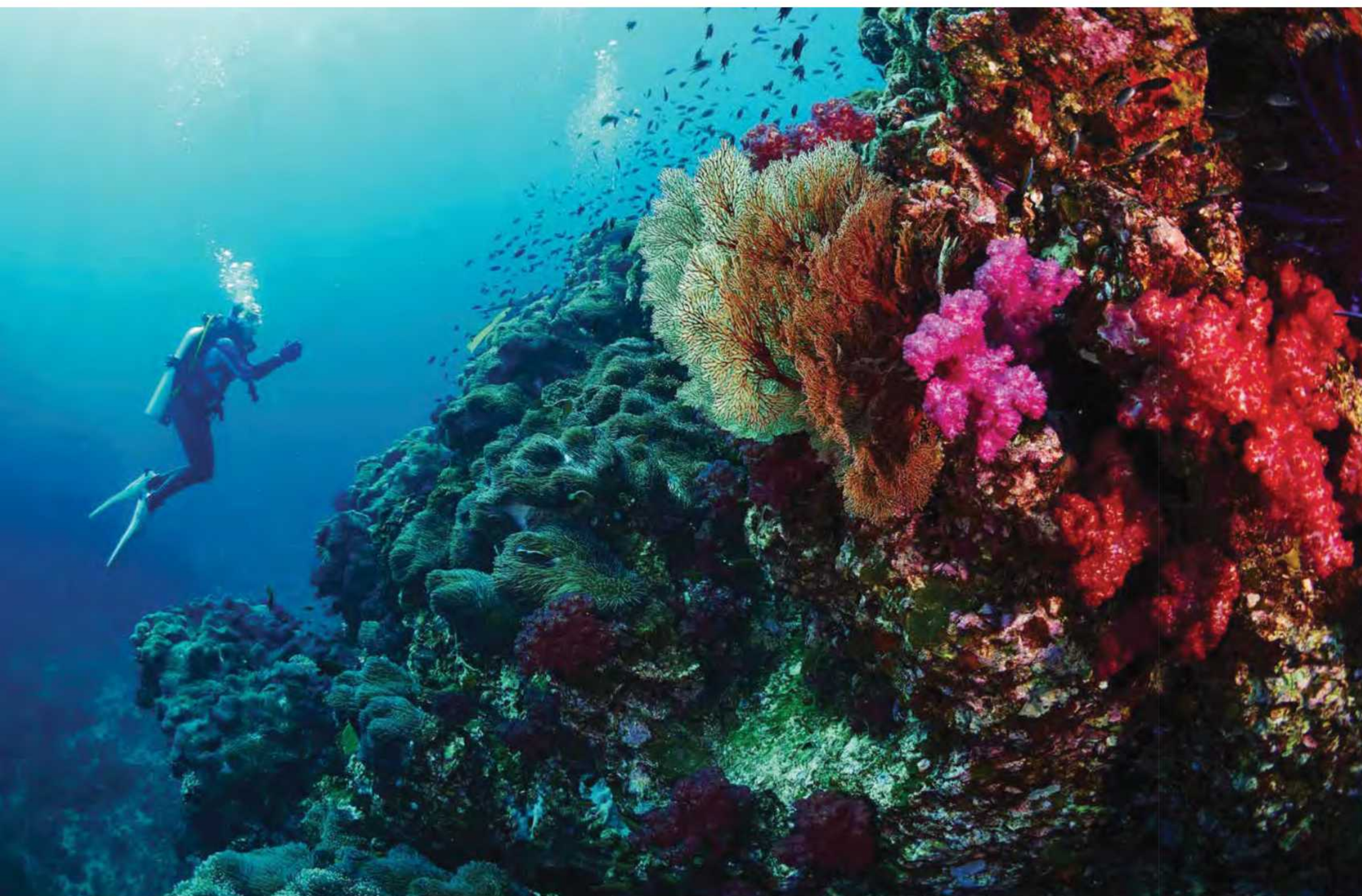








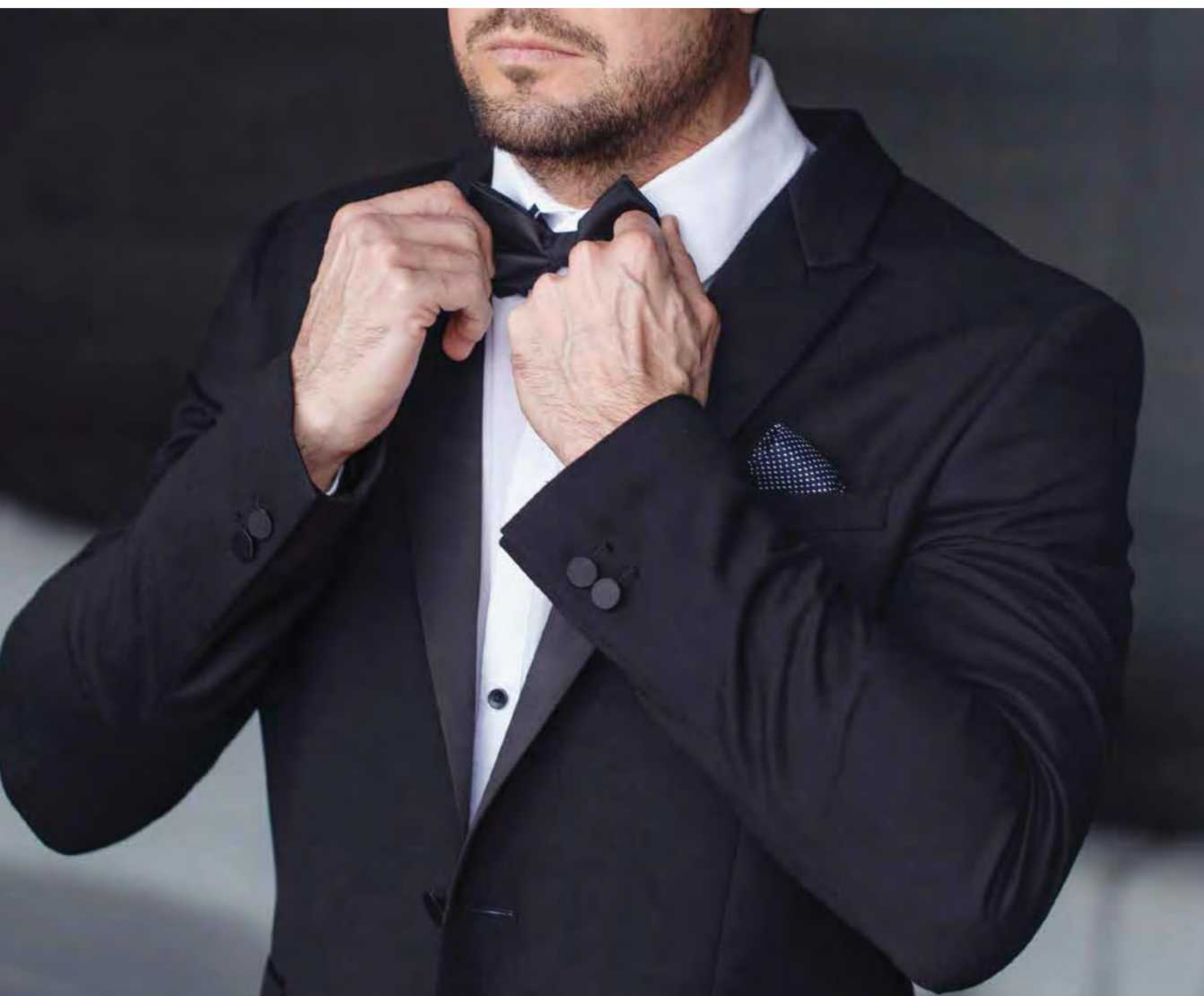
CHAPTER 6



When night falls

From beautiful coral gardens, pearl diving adventures, to unforgettable dinner parties, the palace has it all.

















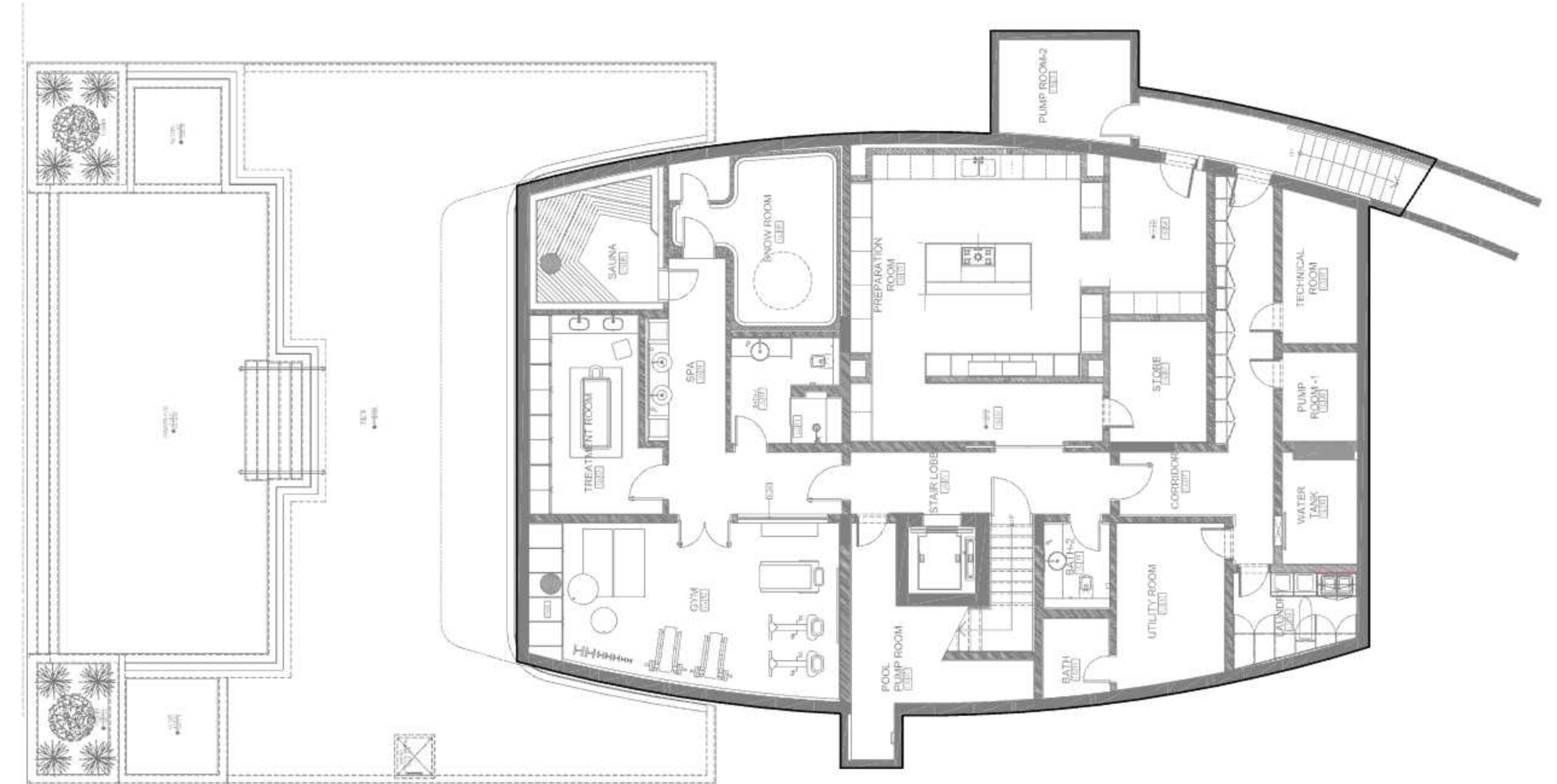


FLOOR PLANS



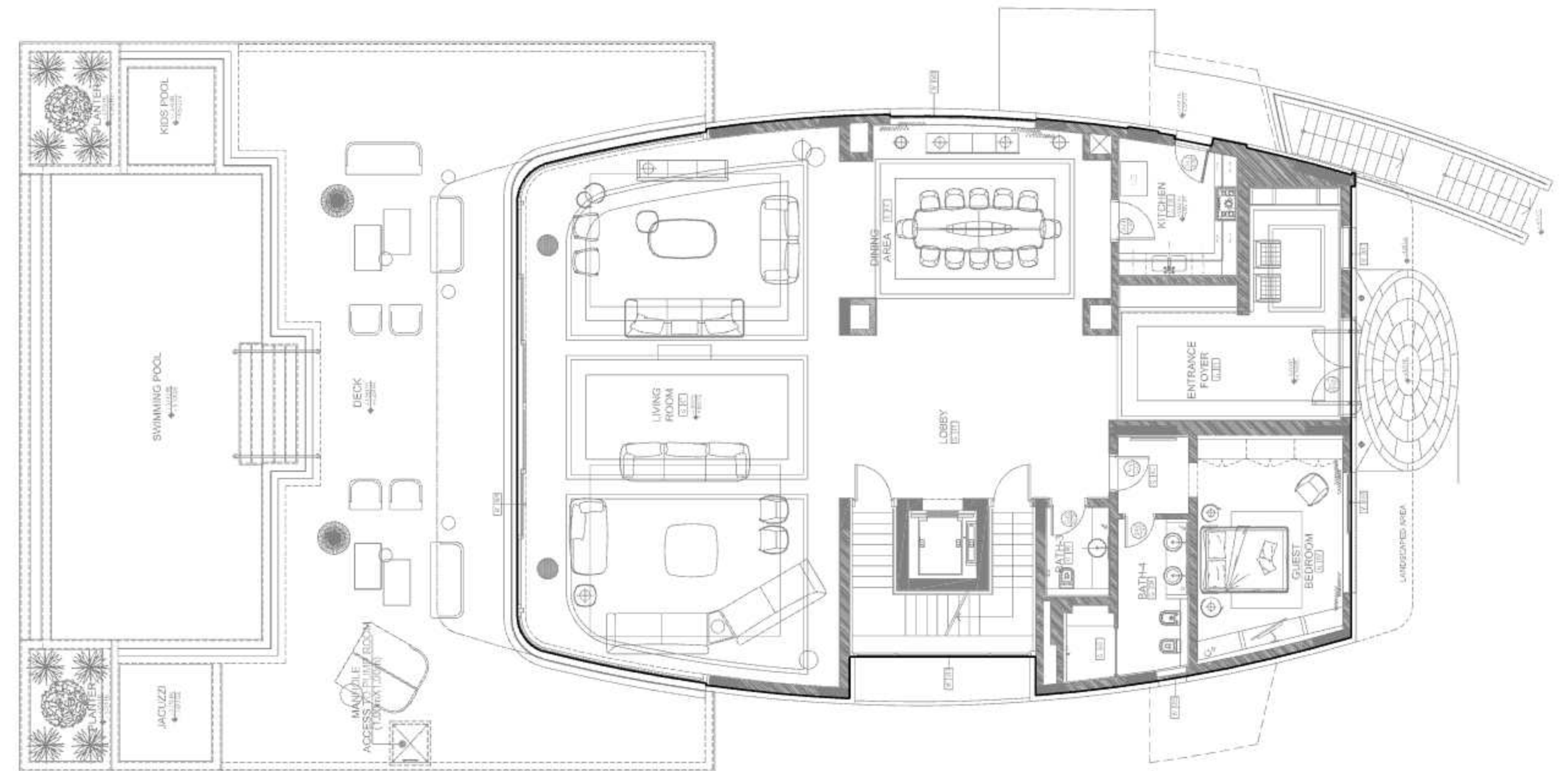
Lower ground floor

Gym | Massage Room | Sauna | Snow Room | Gym
Bathroom | Chef Kitchen | Storage Rooms | Staff Quarter



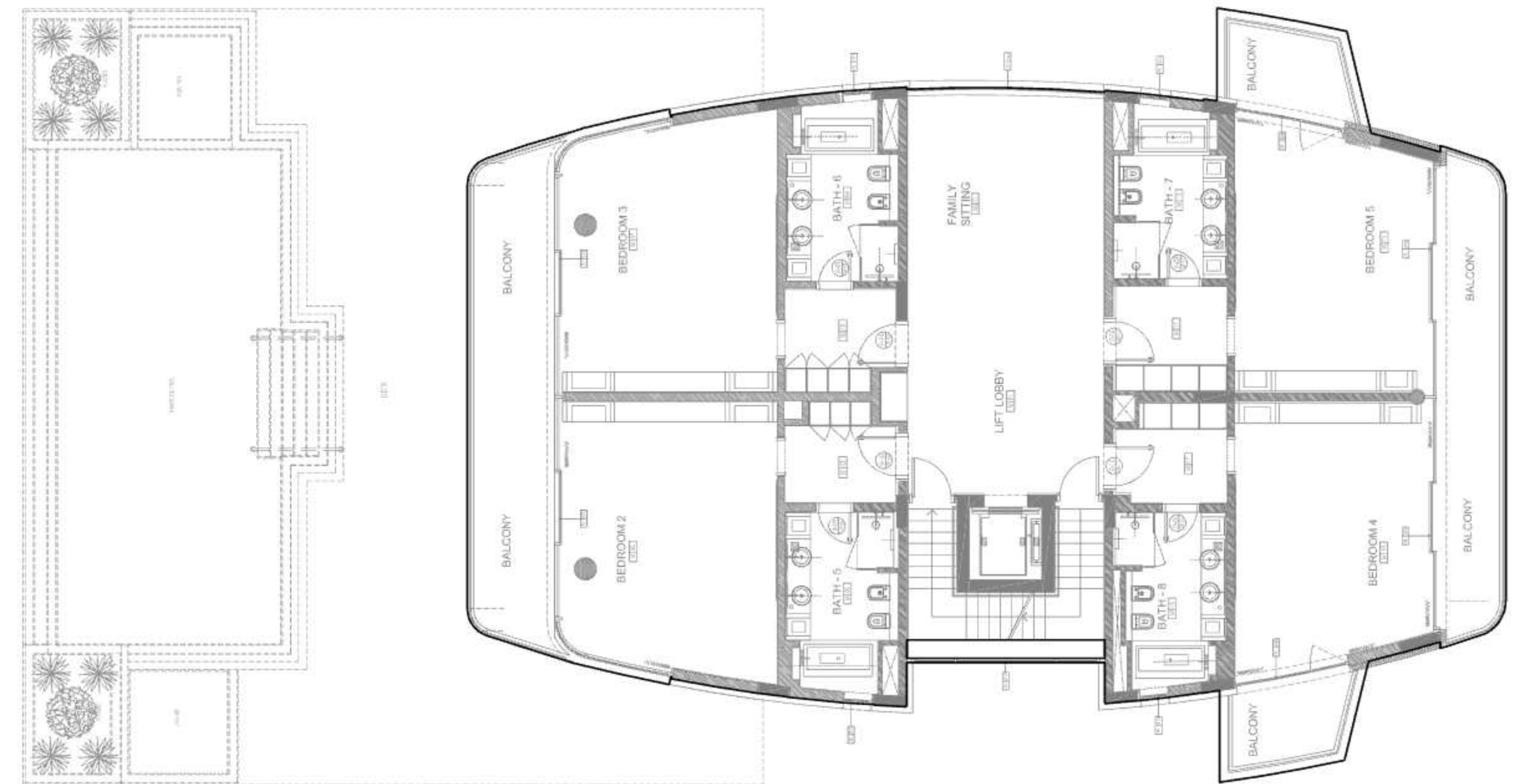
Ground floor

Terrace | Outdoor Lounge Area | Infinity Swimming Pool | Kids' Pool | Jacuzzi | Private Beach | Private Garden | Guest Bedroom | En-suite Bathroom | Guest Toilet | Living Room & Dining Room | Serving Kitchen Elevator | Double Staircases



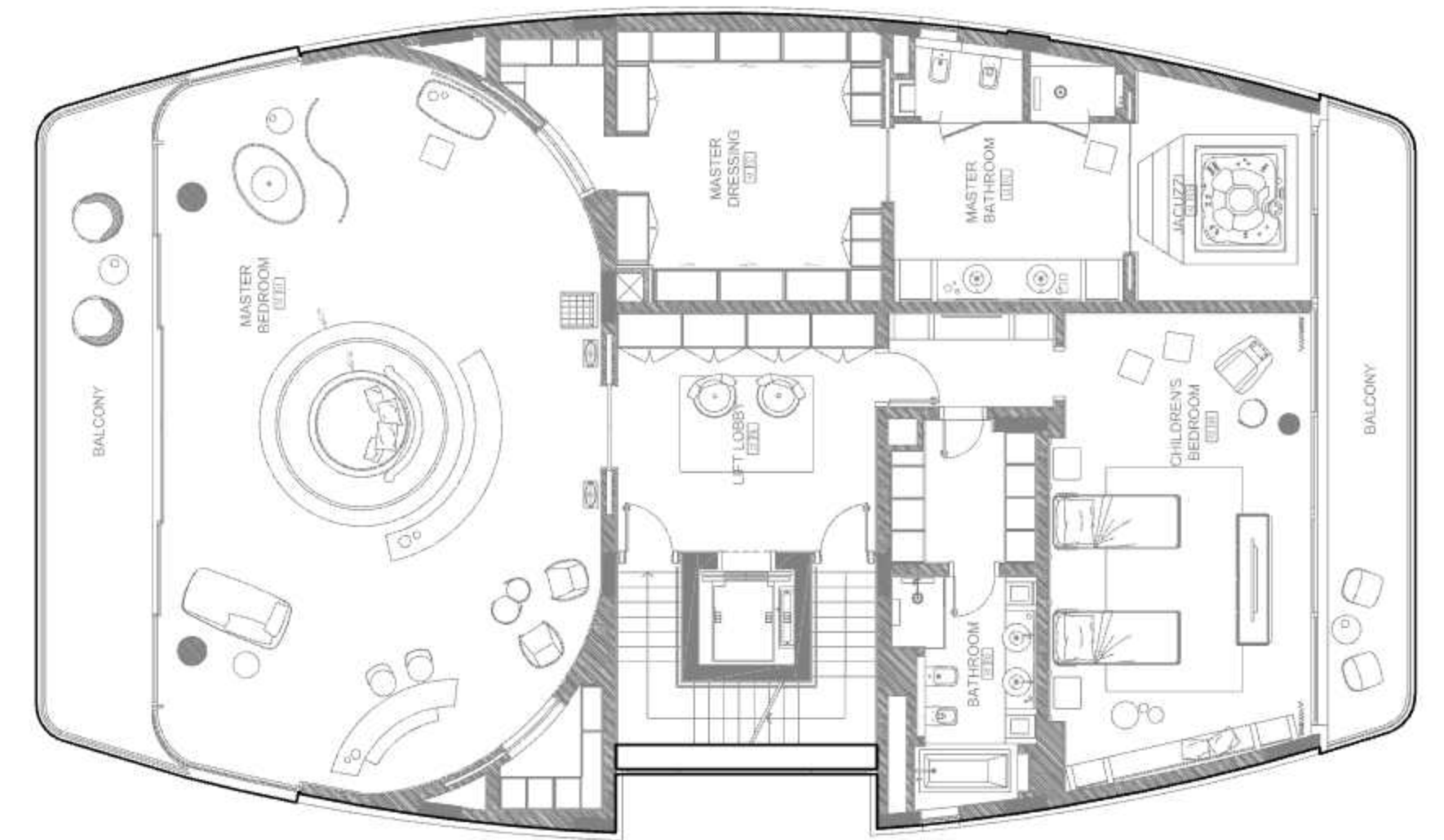
Mezzanine floor

Bedroom 2 | En-suite Lounge Area & Bathroom & Walk-in Closet & Viewing Deck | Bedroom 3 | En-suite Bathroom & Walk-in Closet & Viewing Deck | Bedroom 4 | En-suite Bathroom & Walk-in Closet & Viewing Deck | Bedroom 5 | En-suite Bathroom & Walk-in Closet & Viewing Deck | Lounge Area | Elevator | Double Staircases



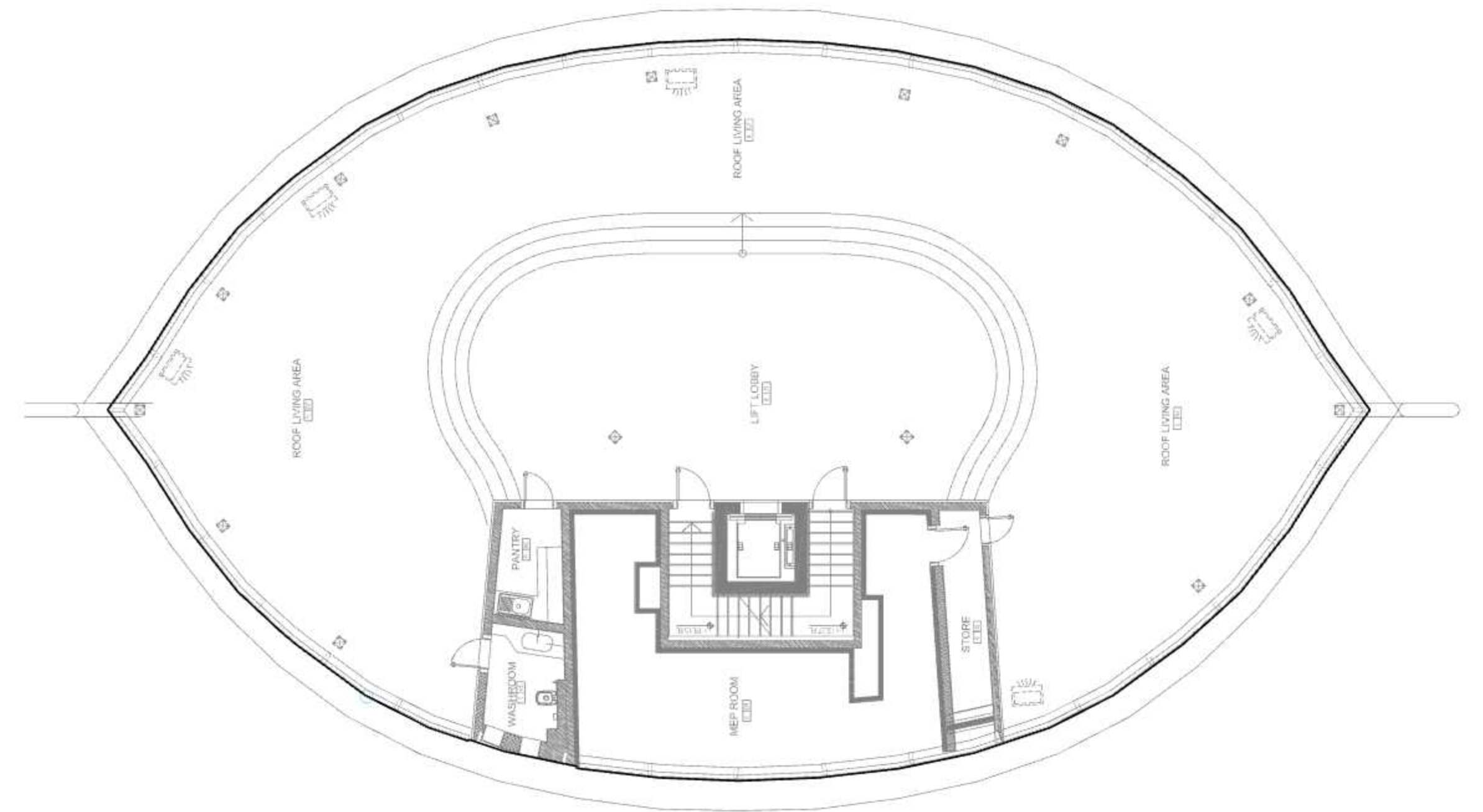
First floor

Master Bedroom | En-suite Lounge Area & Bathroom & 2
Walk-in Closets & Jacuzzi & Viewing Deck | Bedroom 7 |
En-suite Bathroom & Walk-in Closet & Viewing Deck |
Lounge Area | Elevator | Double Staircases



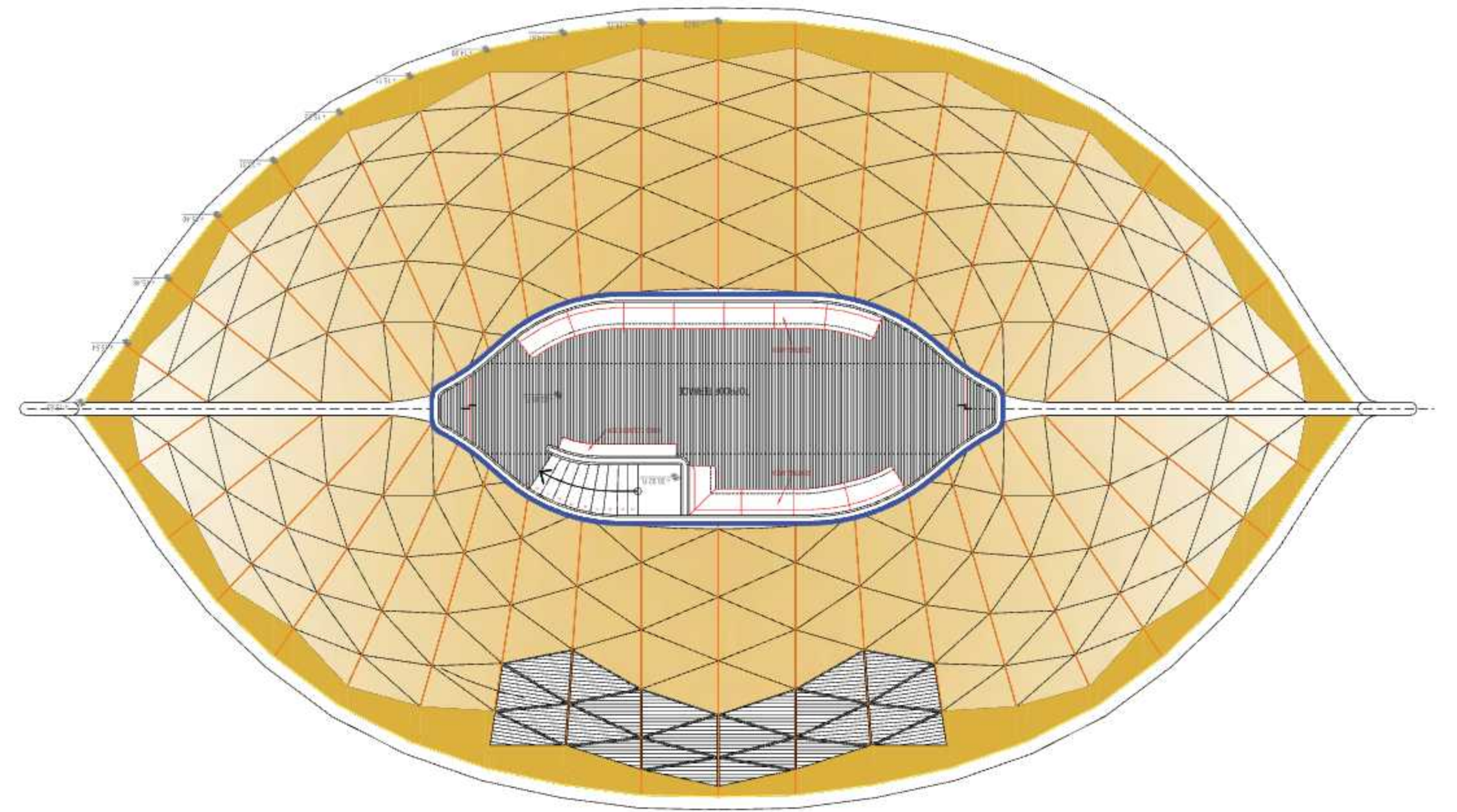
Top floor

Party & Chill out full floor | Guests Capacity 300 | Floor to Ceiling Windows | Vaulted Ceiling | 360* Views | Pantry | Half Bathroom | Elevator | Double Staircases | Access to Roof Deck



Upper roof deck

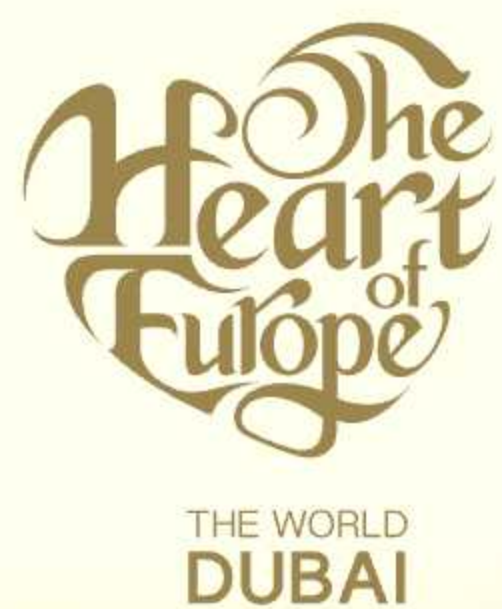
360* Views | Outdoor Lounge | Wooden Floors | Vessel
Hull Shaped Deck & Unique Viking Dragon Head



I like the night

Without the dark, we'd never see the stars





Call 800 EUROPE (38 76 73) or +971 4 818 14 81 from abroad
sales@thoe.com | www.thoe.com

