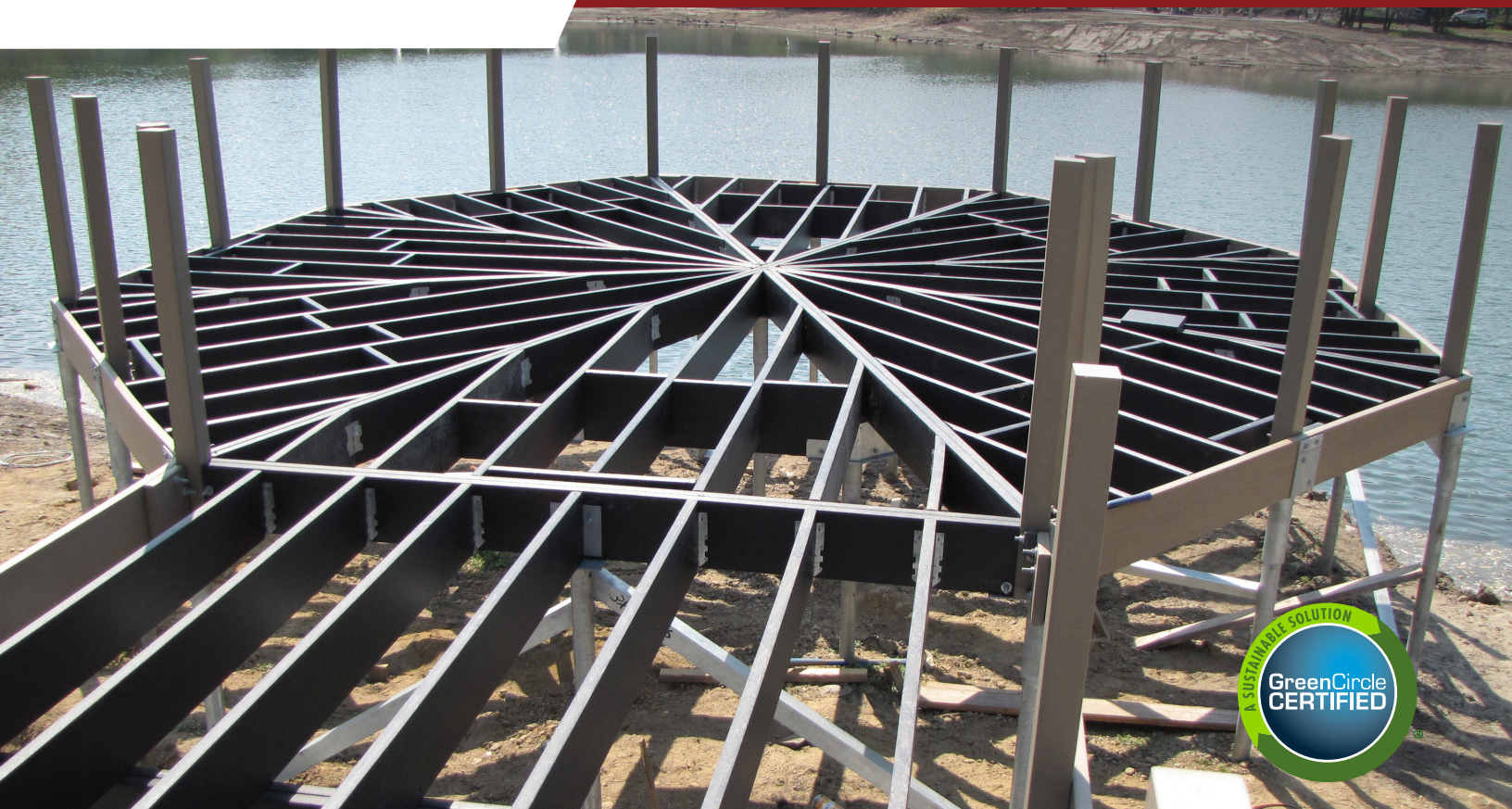


# TANGENT®

SUSTAINABLE LUMBER

## Tangent Structural Lumber (SL) Dock & Decking Substructure



**Tangent's Sustainable Lumber has been used to build decking and boardwalk substructures for over 15 years.** Our recycled plastic lumber is reinforced with fiberglass which enhances its stiffness and strength and reduces its thermal expansion and contraction.

Installation uses the same tools and construction techniques as with pressure treated wood. Our GreenCircle Certified recycled material is attractive for sustainability and green building initiatives.

Tangent's durability is outstanding, whatever the environment.


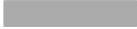
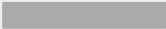

### Features & Benefits:

- 50-Year limited warranty
- Tough: will never splinter, peel, check or delaminate
- Will not rot, corrode or rust; impervious to termite and fungal decay
- Ideally suited for ground contact; will not absorb moisture and will not deteriorate
- Use typical wood working tools; install with joist hangers
- Extensive range of profiles
- Purchase direct from manufacturer or dealer (depending on location)
- Made in the USA



AVAILABLE SIZES:

Wide range of available profiles in addition to 2x detailed below including 3x, 4x, 5x, 6x, 7x, 8x, 10x, 12x. Manufactured in standard & custom lengths per project specs.

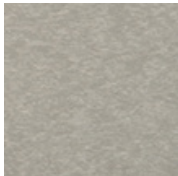
Shape	Nominal Profile	Actual Dimensions (in x in)	Lengths (ft)
	2 x 6	1.46 x 5.44	Lengths up to 16'
	2 x 8	1.5 x 7.4	Lengths up to 16'
	2 x 10	1.46 x 9.26	Lengths up to 16'
	2 x 12	1.46 x 11.25	Lengths up to 16'

COLORS:

Standard offering is black. Other colors available.



BLACK



GRAY



NORWEGIAN WEATHER WOOD



CONFIDENTLY DURABLE

No rotting, splintering or peeling with materials that stand the test of time. Our products can withstand year round weather and endure the harshest of environments.



LASTING BEAUTY

Our boards are manufactured with UV stabilizers throughout so they will never require painting, staining or sealing.



JOIST SPANS:

Live load @ L/240 - Joists & decking plus 5 psf dead load @ L/240 - 650,000 psi secant modulus

Joist Profile		Joist Spacing	ALLOWABLE SPAN Live Load			
			40 psf	60 psf	80 psf	100 psf
2x6	1.5"x5.5"	12"	8' 8"	8' 1"	7' 4"	6' 10"
		16"	8' 1"	7' 4"	6' 8"	6' 3"
		24"	7' 3"	6' 5"	5' 10"	5' 6"
2x8	1.5"x7.4"	12"	11' 4"	10' 9"	9' 10"	9' 2"
		16"	10' 8"	9' 10"	8' 11"	8' 4"
		24"	9' 7"	8' 7"	7' 10"	7' 4"
2x10	1.5"x9.25"	12"	13' 11"	13' 7"	12' 5"	11' 6"
		16"	13' 2"	12' 5"	11' 3"	10' 6"
		24"	11' 11"	10' 10"	9' 11"	9' 2"
2x12	1.5"x11.25"	12"	16' 6"	16' 6"	15' 1"	14' 0"
		16"	15' 8"	15' 1"	13' 9"	12' 9"
		24"	14' 4"	13' 2"	12' 0"	11' 2"



SUSTAINABLY  
MADE

Our boards don't need to be treated like wood and are environmentally-friendly. Made from recycled materials, our lumber won't leach chemicals into our environment.



EASE OF  
CARE

Our material is impervious to termites, insect and fungal decay, moisture cannot be absorbed and will not cause deterioration. Truly an ultra low maintenance product.



MADE IN THE  
USA

Made in the United States with exceptional quality. Our engineers conduct ongoing testing to numerous ASTM standards.



# GIRDER SUPPORT POST SPACING WITH 2 POSTS

## 60 psf Live load @ L/360

Joists, decking, beam plus 5 psf dead load @ L/360 - 650,000 psi secant modulus

Girder Profile	# of Girder Plies	Length of Joist (ft)													
		4'	5'	6'	7'	8'	9'	10'	11'	12'	13'	14'	15'	16'	
		Post Spacing (ft' in")													
2x6	2	6' 10"	6' 4"	5' 11"	5' 8"	5' 5"	5' 2"	5' 0"	4' 10"	4' 9"	4' 7"	4' 6"	4' 5"	4' 3"	
	3	7' 8"	7' 3"	6' 10"	6' 6"	6' 2"	5' 11"	5' 9"	5' 7"	5' 5"	5' 3"	5' 2"	5' 0"	4' 11"	
2x8	2	8' 11"	8' 5"	8' 1"	7' 8"	7' 4"	7' 0"	6' 9"	6' 7"	6' 5"	6' 3"	6' 1"	5' 11"	5' 10"	
	3	9' 10"	9' 4"	8' 11"	8' 7"	8' 4"	8' 1"	7' 9"	7' 6"	7' 4"	7' 1"	6' 11"	6' 9"	6' 8"	
2x10	2	10' 10"	10' 3"	9' 10"	9' 5"	9' 1"	8' 9"	8' 6"	8' 4"	8' 1"	7' 11"	7' 8"	7' 6"	7' 4"	
	3	11' 10"	11' 4"	10' 10"	10' 5"	10' 1"	9' 10"	9' 6"	9' 4"	9' 1"	8' 11"	8' 8"	8' 6"	8' 4"	
2x12	2	12' 9"	12' 1"	11' 6"	11' 1"	10' 8"	10' 4"	10' 1"	9' 9"	9' 7"	9' 4"	9' 2"	8' 11"	8' 9"	
	3	13' 10"	13' 3"	12' 9"	12' 3"	11' 11"	11' 6"	11' 3"	10' 11"	10' 8"	10' 6"	10' 3"	10' 1"	9' 11"	

## 80 psf Live load @ L/360

Joists, decking, beam plus 5 psf dead load @ L/360 - 650,000 psi secant modulus

Girder Profile	# of Girder Plies	Length of Joist (ft)													
		4'	5'	6'	7'	8'	9'	10'	11'	12'	13'	14'	15'	16'	
		Post Spacing (ft' in")													
2x6	2	6' 2"	5' 9"	5' 5"	5' 2"	4' 11"	4' 9"	4' 7"	4' 5"	4' 3"	4' 2"	4' 1"	4' 0"	3' 11"	
	3	7' 1"	6' 7"	6' 2"	5' 11"	5' 7"	5' 5"	5' 3"	5' 1"	4' 11"	4' 9"	4' 8"	4' 7"	4' 6"	
2x8	2	8' 4"	7' 9"	7' 4"	6' 11"	6' 8"	6' 5"	6' 2"	6' 0"	5' 10"	5' 8"	5' 6"	5' 5"	5' 3"	
	3	9' 7"	8' 11"	8' 4"	7' 11"	7' 7"	7' 4"	7' 1"	6' 10"	6' 8"	6' 6"	6' 4"	6' 2"	6' 0"	
2x10	2	10' 7"	9' 10"	9' 3"	8' 10"	8' 5"	8' 1"	7' 10"	7' 7"	7' 4"	7' 2"	7' 0"	6' 10"	6' 8"	
	3	12' 2"	11' 3"	10' 7"	10' 1"	9' 8"	9' 3"	8' 11"	8' 8"	8' 5"	8' 2"	8' 0"	7' 10"	7' 8"	
2x12	2	12' 11"	12' 0"	11' 4"	10' 9"	10' 3"	9' 11"	9' 6"	9' 3"	9' 0"	8' 9"	8' 6"	8' 4"	8' 2"	
	3	14' 10"	13' 9"	12' 11"	12' 4"	11' 9"	11' 4"	10' 11"	10' 7"	10' 3"	10' 0"	9' 9"	9' 6"	9' 4"	

## 100 psf Live load @ L/360

Joists, decking, beam plus 5 psf dead load @ L/360 - 650,000 psi secant modulus

Girder Profile	# of Girder Plies	Length of Joist (ft)													
		4'	5'	6'	7'	8'	9'	10'	11'	12'	13'	14'	15'	16'	
		Post Spacing (ft' in")													
2x6	2	5' 9"	5' 4"	5' 0"	4' 9"	4' 7"	4' 5"	4' 3"	4' 1"	4' 0"	3' 11"	3' 9"	3' 8"	3' 7"	
	3	6' 7"	6' 1"	5' 9"	5' 5"	5' 3"	5' 0"	4' 10"	4' 8"	4' 7"	4' 5"	4' 4"	4' 3"	4' 2"	
2x8	2	7' 9"	7' 3"	6' 9"	6' 5"	6' 2"	5' 11"	5' 9"	5' 7"	5' 5"	5' 3"	5' 1"	4' 0"	4' 11"	
	3	8' 11"	8' 3"	7' 9"	7' 5"	7' 1"	6' 9"	6' 7"	6' 4"	6' 2"	6' 0"	5' 10"	5' 9"	5' 7"	
2x10	2	9' 10"	9' 2"	8' 7"	8' 2"	7' 10"	7' 6"	7' 3"	7' 0"	6' 10"	6' 8"	6' 6"	6' 4"	6' 2"	
	3	11' 3"	10' 5"	9' 10"	9' 4"	8' 11"	8' 7"	8' 4"	8' 0"	7' 10"	7' 7"	7' 5"	7' 3"	7' 1"	
2x12	2	12' 0"	11' 2"	10' 6"	10' 0"	9' 6"	9' 2"	8' 10"	8' 7"	8' 4"	8' 1"	7' 11"	7' 9"	7' 7"	
	3	13' 9"	12' 9"	12' 0"	11' 5"	10' 11"	10' 6"	10' 2"	9' 10"	9' 6"	9' 3"	9' 1"	8' 10"	8' 8"	



# GRIDER BEAM SUPPORT POST SPACING: 3 OR MORE SUPPORTS

## 60 psf Live load @ L/360

Joists, decking, beam plus 5 psf dead load @ L/360 - 650,000 psi secant modulus

Girder Profile	# of Girder Plies	Length of Joist (ft)													
		4'	5'	6'	7'	8'	9'	10'	11'	12'	13'	14'	15'	16'	
		Post Spacing (ft' in")													
2x6	2	9' 3"	8' 7"	8' 1"	7' 8"	7' 4"	7' 1"	6' 10"	6' 7"	6' 5"	6' 3"	6' 1"	5' 11"	5' 10"	
	3	10' 5"	9' 10"	9' 3"	8' 9"	8' 5"	8' 1"	7' 10"	7' 7"	7' 4"	7' 2"	7' 0"	6' 10"	6' 8"	
2x8	2	12' 2"	11' 6"	10' 11"	10' 4"	9' 11"	9' 6"	9' 3"	8' 11"	8' 8"	8' 5"	8' 3"	8' 1"	7' 11"	
	3	13' 4"	12' 8"	12' 2"	11' 8"	11' 3"	10' 11"	10' 7"	10' 3"	9' 11"	9' 8"	9' 5"	9' 3"	9' 0"	
2x10	2	14' 9"	13' 11"	13' 4"	12' 9"	12' 4"	11' 11"	11' 7"	11' 3"	11' 0"	10' 8"	10' 5"	10' 2"	10' 0"	
	3	16' 1"	15' 4"	14' 9"	14' 2"	13' 9"	13' 4"	12' 11"	12' 7"	12' 4"	12' 1"	11' 10"	11' 7"	11' 4"	
2x12	2	17' 3"	16' 5"	15' 8"	15' 1"	14' 6"	14' 1"	13' 8"	13' 4"	13' 0"	12' 8"	12' 5"	12' 2"	11' 11"	
	3	18' 10"	18' 0"	17' 3"	16' 8"	16' 2"	15' 8"	15' 3"	14' 10"	14' 6"	14' 3"	13' 11"	13' 8"	13' 5"	

## 80 psf Live load @ L/360

Joists, decking, beam plus 5 psf dead load @ L/360 - 650,000 psi secant modulus

Girder Profile	# of Girder Plies	Length of Joist (ft)													
		4'	5'	6'	7'	8'	9'	10'	11'	12'	13'	14'	15'	16'	
		Post Spacing (ft' in")													
2x6	2	8' 5"	7' 10"	7' 4"	7' 0"	6' 8"	6' 5"	6' 2"	5' 0"	5' 10"	5' 8"	5' 6"	5' 5"	5' 4"	
	3	9' 7"	8' 11"	8' 5"	8' 0"	7' 8"	7' 4"	7' 1"	6' 10"	6' 8"	6' 6"	6' 4"	6' 2"	6' 1"	
2x8	2	11' 4"	10' 7"	9' 11"	9' 5"	9' 0"	8' 8"	8' 4"	8' 1"	7' 11"	7' 8"	7' 6"	7' 4"	7' 2"	
	3	13' 0"	12' 1"	11' 4"	10' 9"	10' 4"	9' 11"	9' 7"	9' 3"	9' 0"	8' 9"	8' 7"	8' 4"	8' 2"	
2x10	2	14' 5"	13' 4"	12' 7"	11' 11"	11' 5"	11' 0"	10' 7"	10' 3"	10' 0"	9' 9"	9' 6"	9' 3"	9' 1"	
	3	16' 1"	15' 4"	14' 5"	13' 8"	13' 1"	12' 7"	12' 2"	11' 9"	11' 5"	11' 1"	10' 10"	10' 7"	10' 5"	
2x12	2	17' 3"	16' 4"	15' 4"	14' 7"	13' 11"	13' 5"	12' 11"	12' 7"	12' 2"	11' 10"	11' 7"	11' 4"	11' 1"	
	3	18' 10"	18' 0"	17' 3"	16' 8"	16' 0"	15' 4"	14' 10"	14' 4"	13' 11"	13' 7"	13' 3"	12' 11"	12' 8"	

## 100 psf Live load @ L/360

Joists, decking, beam plus 5 psf dead load @ L/360 - 650,000 psi secant modulus

Girder Profile	# of Girder Plies	Length of Joist (ft)													
		4'	5'	6'	7'	8'	9'	10'	11'	12'	13'	14'	15'	16'	
		Post Spacing (ft' in")													
2x6	2	7' 10"	7' 3"	6' 10"	6' 6"	6' 2"	5' 11"	5' 9"	5' 7"	5' 5"	5' 3"	5' 2"	5' 0"	4' 11"	
	3	8' 11"	8' 3"	7' 10"	7' 5"	7' 1"	6' 10"	6' 7"	6' 4"	6' 2"	6' 0"	5' 11"	5' 9"	5' 8"	
2x8	2	10' 7"	9' 9"	9' 3"	8' 9"	8' 4"	8' 1"	7' 9"	7' 6"	7' 4"	7' 1"	6' 11"	6' 9"	6' 8"	
	3	12' 1"	11' 2"	10' 7"	10' 0"	9' 7"	9' 3"	8' 11"	8' 7"	8' 4"	8' 2"	7' 11"	7' 9"	7' 7"	
2x10	2	13' 4"	12' 5"	11' 8"	11' 1"	10' 7"	10' 2"	9' 10"	9' 6"	9' 3"	9' 0"	8' 10"	8' 7"	8' 5"	
	3	15' 4"	14' 2"	13' 4"	12' 8"	12' 2"	11' 8"	11' 3"	10' 11"	10' 7"	10' 4"	10' 1"	9' 10"	9' 8"	
2x12	2	16' 4"	15' 2"	14' 3"	13' 7"	12' 11"	12' 5"	12' 0"	11' 8"	11' 4"	11' 0"	10' 9"	10' 6"	10' 3"	
	3	18' 8"	17' 4"	16' 4"	15' 6"	14' 10"	14' 3"	13' 9"	13' 4"	12' 11"	12' 7"	12' 4"	12' 0"	11' 9"	



