

# twinkle little stars

## nursery school



# PROSPECTUS

" RAISING SUPERSTARS SINCE 2007 "



082 334 9671

✉ [stars@twinklelittlestars.co.za](mailto:stars@twinklelittlestars.co.za)

🌐 [www.twinklelittlestars.co.za](http://www.twinklelittlestars.co.za)

EDUCATION DEPARTMENT

REGISTERED ✓

EMIS Number - 700903009





# ABOUT US

## OUR VISION

Twinkle Little Stars is an established, owner-run nursery school that strives to be your little star's home away from home. We appreciate that each child is special and unique and that positive early childhood memories create an integral building block for a child's successful development into adolescence and adulthood. We create a safe environment that focuses on respect and inclusivity to ensure fun and happy learning for all.

## OUR MISSION STATEMENT

At Twinkle Little Stars we are passionate about children and deliver high quality education and child care in a safe, spacious and natural environment.

We utilise our wealth of experience to ensure that each little star is nurtured to reach their full potential. We believe that learning should be fun and that the best learning happens through play.

## WHY CHOOSE TWINKLE LITTLE STARS?

At Twinkle Little Stars we understand that you are entrusting your most precious possession to our care. Safety of our learners always comes first. Our staff complement is well-established and fully qualified. Under the close guidance of our principal, Elaine Scolari, our teachers prove their commitment to educating our little stars and demonstrate their dedication and passion to making learning fun.

Our program aims to improve the following developmental areas:

- Fine motor development
- Gross motor development
- Intellectual development
- Language development
- Social development

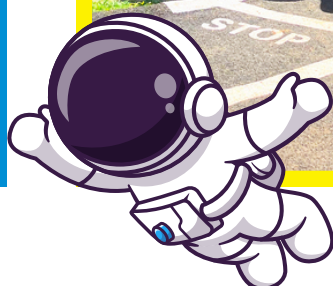
Our curriculum is introduced using interesting age-appropriate themes that expand the children's knowledge base. Our curriculum is loaded with fun activities for the children to do, including art and baking activities.

The Grade R children follow the CAPS curriculum as specified by the Department of Education.

# our events



**EVERY DAY AT TWINKLE LITTLE STARS  
SPARKLES WITH WONDER, WHERE CURIOSITY  
LEADS THE WAY AND LEARNING HAPPENS  
THROUGH PLAY!**

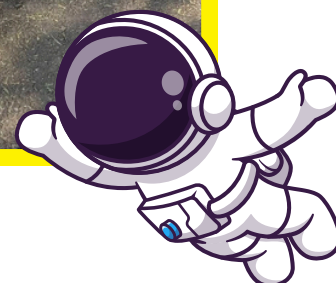




# our events



**THEMED DAYS ARE SPRINKLED  
THROUGHOUT OUR YEAR, GIVING CHILDREN  
A CHANCE TO DRESS UP, EXPLORE, AND  
LEARN IN THE MOST JOYFUL AND CREATIVE  
WAYS.**





# our events

**WE CHERISH THOSE SPECIAL DAYS WHEN  
MOMS, DADS, AND LOVED ONES JOIN US  
FOR MAGICAL MEMORIES AT SCHOOL!**







# NUTRITION

We believe that how your child eats today will have a striking impact on their health throughout their lives. Consuming a nutritious, well-balanced diet will help your child grow and even affects their academic performance and self-image. As a result, our menu includes four delicious meals incorporating all the food groups daily. Our meals are prepared on the premises with fresh, healthy ingredients.

Aside for being a basic life-sustaining necessity eating is a very social activity and a large part of everyday. It is very important that our children form a healthy relationship with food early on. We try and make all meal times a fun event and something to look forward to each day. Our curriculum includes various food-based activities and the children regularly prepare their own sandwiches for snack, we have a bi-weekly make & bake and special events always include a special lunch.

Teaching children the importance of good nutrition throughout childhood will lay the foundation for a healthier more fulfilling life.

## Week 1

Meal	Monday	Tuesday	Wednesday	Thursday	Friday
<b>Breakfast</b>	Mealie meal	Jungle Oats	Mealie meal	Jungle Oats	Mealie meal
<b>Morning Snack</b>	Peanut butter sandwich and fruit	Jam sandwich and fruit	Chocolate Spread sandwich and fruit	Cheese spread sandwich and fruit	Yoghurt/Jelly and custard and biscuits/tuck
<b>Lunch</b>	Beef Stew and rice	Chicken a la king and rice	Penne Bolognese	Crumbed chicken bites, mash and gravy	Tuna Pasta
<b>Afternoon Snack</b>	Biscuits and fruit	Muffin and fruit	Yoghurt/Jelly and custard and biscuits	Flapjacks and fruit	Vetkoek with jam and fruit

## Week 2

Meal	Monday	Tuesday	Wednesday	Thursday	Friday
<b>Breakfast</b>	Jungle oats	Mealie meal	Jungle oats	Mealie meal	Jungle oats
<b>Morning Snack</b>	Peanut butter sandwich and fruit	Jam sandwich and fruit	Chocolate Spread sandwich and fruit	Cheese spread sandwich and fruit	Yoghurt/Jelly and custard and biscuits/tuck
<b>Lunch</b>	Cottage pie	Chicken a la king and rice	Spaghetti and meatballs	Chicken stew and rice	Fish fingers and mash
<b>Afternoon Snack</b>	Biscuits and fruit	Muffin and fruit	Yoghurt/Jelly and custard and biscuits	Flapjacks and fruit	Chocolate Spread sandwich and fruit





# GENERAL INFO

## DAILY COMMUNICATION

We provide a communication book that aims to act as a link between you and your child's teacher. We keep you up to date with all relevant info that you need for your child. Feel free to use this book to communicate with your child's teacher.

## TIME IN THE SUN

Time outdoors is invaluable for children. Weather permitting, we will allow as much outdoor time as possible. We are following a strict "No hat, no play" rule to ensure that children are adequately protected. Please ensure that a sun hat is provided.

## SUNBLOCK LEVY

Unless you would prefer a different brand we provide Nivea SPF 50. We bill a sunblock levy as revised from time to time to the statement on a half-yearly basis.

## FIRST AID

All staff are first aid trained and are able to assist with minor injuries. In the event of a more serious injury, you will be called immediately.

## OPERATION TIMES

We open at 7h00 and close at 17h30. By prior arrangement, we can accommodate a drop off as early as 6h30 and a collection as late as 18h00. We are open throughout the year with the exception of the following days:

- Weekends and public holidays.
- We close on the last working day before the 16<sup>th</sup> December each year and reopen on the Wednesday of the second week in January. The exact dates will be communicated to all parents closer to the end of each year.

## SECURITY

Between the following times, the gates will be manned to ensure controlled access:

- 07h00 - 09h00
- 12h30 - 14h30
- 15h30 - 17h15

At other times of drop off and collection, the gates will be locked and you can buzz us on the intercom. Once we have verified, we will open the gate for you.

Strict collection rules will be applied. Thus we will only "release" the children to people that we are familiar with. If your child is to be collected by someone else please notify us in advance.

## CLASS SIZES

We endeavour to keep our ratio of children to caregiver down to 4 to 1 for babies up to 18 months and 10 to 1 for children up to age 3. Our classes are limited to a maximum of 20 children.





# GENERAL INFO

## WHAT YOU ARE REQUIRED TO BRING

### CHANGING REQUIREMENTS

#### For children not yet potty trained:

- 5 nappies a day
- Bum crème
- Wet wipes
- 2 changes of clothes (weather specific)
- An additional jersey in summer
- A water bottle or sippy cup
- A pillow and blanket marked with your child's name for nap time (sent home weekly on Friday for a wash)
- A sunhat/cap (sent home weekly on Friday for a wash)
- A facecloth marked with your child's name or a packet of wet wipes marked with your child's name and to be replaced from time to time should you prefer.

#### For potty trained children:

- 2 changes of clothes (weather specific)
- A light jacket/jersey in summer
- A water bottle
- A pillow and blanket marked with your child's name for nap time (sent home weekly on Friday for a wash)
- A sunhat/cap (sent home weekly on Friday for a wash)
- A facecloth marked with your child's name or a packet of wet wipes marked with your child's name and to be replaced from time to time should you prefer.

### FOOD REQUIREMENTS

#### Babies/Toddlers on Bottles:

Please note that this list is subject to change, based on your baby's personalised feeding plan.

#### For formula babies:

- Formula, ready measured out in formula cups
- Sterilised bottles, with pre-boiled water.

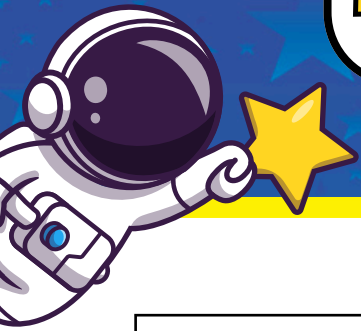
Please mark the baby's bottles with their name.

#### For breastfed babies:

- Baby's daily feeds with their name clearly marked.



# FEE STRUCTURE



The fees from January 2026 are as follows:

	Monthly payment x 12	Annual payment (discount of 10%)*
Full day	R 4,450.00	R 48,060.00
Three quarter day (collection at 15h30)	R 4,200.00	R 45,360.00
Half day (collection at 13h30)	R 3,950.00	R 42,660.00
* 10% discount applies if fees are paid in full by 7 January 2026. A reduced discount will be available for annual payments made after this date.		
Casual Rate	R 250.00	

- Note that no additional administration/registration fees are required.
- Fees are to be paid monthly in advance by the 1<sup>st</sup> day of the month.
- A full calendar months' notice of termination is required. Such notice must be effective from the 1<sup>st</sup> to the last day of the month. Notice effective from 1 November will not be accepted.
- Fees are payable for 12 months in the year unless you elect the casual rate option.
- Fees will be pro-rata based on a 21.5 working day month.
- We prefer payments to be made directly into our bank account, to avoid holding cash on the premises. Our banking details are as follows:

Account Name: Twinkle Little Stars  
Account Type: Current Account  
Bank: Nedbank  
Account Number: 1373025204  
Reference: Child Name and surname