

fodrien





**Welcome to Fodrien Consultants**

**Engineering Excellence, Tailored for Your Needs**



At Fodrien Consultants, we are passionate about providing cutting-edge engineering solutions that meet the unique challenges of our clients.

With a team of seasoned engineers and industry specialists, we offer a comprehensive suite of services that includes project management, design and analysis, feasibility studies, and sustainable development practices.

We are committed to not only meeting but exceeding expectations by delivering high-quality, efficient, and safe solutions that drive success.

### Specialized Expertise in Engineering Disciplines

Fodrien Consultants stands at the forefront of offshore structural engineering, naval architecture, and marine engineering. Our expertise spans across a variety of complex sectors, including:

Offshore Structural Engineering

Marine Engineering

Lifting & Rigging Engineering

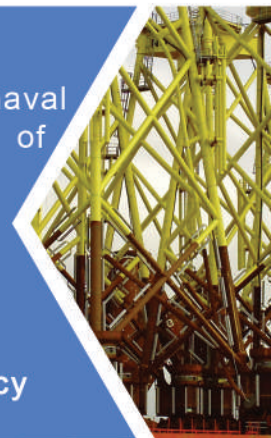
Inspection & Site Supervision Services

Naval Architecture

Piping & Plant Engineering

Sea Transportation Engineering

Steel Industry Technical Consultancy



### Transforming Challenges into Opportunities:

With vast of experience in tackling a diverse range of engineering challenges, we bring unparalleled insight and skill to every project. Whether it's designing robust offshore structures, ensuring the efficiency of piping systems, or optimizing marine operations,

our engineers are equipped to create solutions that are not only technically sound but also sustainable.

### Your Trusted Partner for Success:

At Fodrien Consultants, we are more than just a consultancy. We are your partners in navigating complex engineering landscapes, collaborating with you to bring your vision to life. Our commitment to excellence, safety, and sustainable practices ensures that we deliver results that make a difference.

Let us help you transform your vision into reality. Reach out today to discover how we can tackle your toughest engineering challenges and exceed your expectations.







**In-Place Design:** We assess and optimize structures to ensure they are fully equipped to withstand all operational loads throughout their service life, ensuring peak performance and reliability.

**Dynamic Analysis:** Using advanced dynamic simulations, we evaluate how structures respond to time-varying forces such as waves, wind, and currents. This process guarantees that safety and stability are maintained, even under unpredictable conditions.

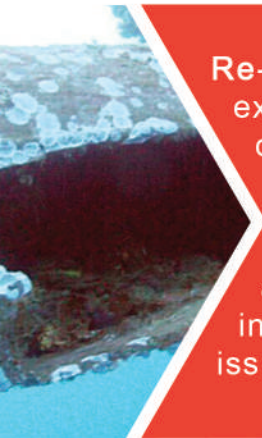
**Preservice Evaluation:** Before deployment, we conduct comprehensive evaluations to confirm that all design elements meet the highest safety and performance standards, catching potential issues early in the process to avoid delays or failures.

**Seismic Assessment:** Our rigorous seismic analysis ensures that offshore structures can endure the forces of earthquakes. We go the extra mile to ensure compliance with industry standards and relevant codes for maximum safety.



**Re-Qualification:** We offer thorough re-qualification assessments, ensuring that existing offshore structures remain compliant with current engineering standards and continue to meet operational requirements.

**Recertification:** Our experts facilitate the recertification process for offshore assets, ensuring that your assets remain compliant with regulatory standards and industry best practices. We perform detailed inspections to uncover any potential issues affecting the safe operation of your facilities.



**Design Support for Certification:** We provide comprehensive structural design support for certification, ensuring that your projects meet all necessary regulatory standards and industry requirements. Our team conducts thorough evaluations, detailed analyses, and produces precise documentation to facilitate smooth certification processes and guarantee compliance.

**Local Checks:** We conduct detailed, on-site checks of components and connections, ensuring they meet rigorous strength and stability requirements under all loading conditions.







**Vessel Design:** From commercial ships to offshore support vessels and luxurious yachts, we create vessels optimized for performance, stability, and safety, ensuring they meet both operational and regulatory demands.

**Hydrodynamic Analysis:** Through advanced hydrodynamic assessments, we evaluate vessel performance across different sea conditions, enhancing fuel efficiency, reducing emissions, and boosting overall operational effectiveness.

**Stability Assessment:** Our in-depth stability analyses guarantee that your vessels comply with international standards, ensuring safe operation under all conditions, from calm seas to harsh weather.

**Structural Design:** Focusing on the structural integrity of each vessel, we employ advanced materials and innovative design techniques that maximize durability and minimize maintenance costs.



**Regulatory Compliance:** We ensure that every design adheres to the latest industry standards and regulations, including those set by renowned classification societies such as ABS, DNV, RINA, BV, and Lloyd's Register.

**Retrofits and Modifications:** With expertise in retrofitting and modifying existing vessels, we enhance performance, extend service life, and bring your vessels up to date with the latest regulatory requirements.



**Construction Supervision:** Our on-site supervision services ensure that vessels are built to exact specifications, maintaining the highest quality standards throughout the construction phase.

**Project Planning and Scheduling:** We develop detailed project plans and timelines that align with your goals, ensuring efficient resource allocation and timely delivery from start to finish.







**Tow Plan Preparation:** With in-depth knowledge of the maritime industry, we guide clients through the complexities of tow planning, ensuring compliance with DGS India and other flag requirements. Our services cover Initial Assessment, Route Planning, Risk Analysis, Equipment and Gear Evaluation, Documentation, Compliance, and precise Bollard Pull Requirement Calculations.

**Towing Manual Preparation:** We expertly prepare towing manuals for tug vessels, adhering strictly to DGS India and other flag guidelines, ensuring safe and efficient towing operations.

**Condition Assessment of Ships:** Our comprehensive condition assessment services evaluate the physical and operational health of vessels. Using advanced methodologies, we assess safety, compliance, and efficiency, empowering clients to make well-informed decisions on maintenance, repairs, and regulatory adherence.

**Operational Support:** We provide ongoing technical support for vessel operations and maintenance, conducting safety audits, risk management assessments, and crew training programs to ensure smooth, compliant, and efficient operations.



**Marine Warranty Survey:** We safeguard the interests of stakeholders in maritime and offshore sectors with thorough marine warranty survey services. Our experienced surveyors assess vessels, equipment, and procedures, confirming their suitability and ensuring full compliance with contractual and regulatory standards.

**Quality Assurance:** Our rigorous quality assurance processes ensure that every aspect of the project meets both industry standards and client specifications, minimizing costly rework and maximizing reliability.

**Project Management:** From inception to completion, we provide robust project management services. We handle coordination with shipyards, suppliers, and regulatory bodies, while overseeing cost estimation and timeline management to ensure smooth and timely project delivery.

**Regulatory Compliance:** Our expert team offers strategic guidance on adhering to maritime regulations such as SOLAS, MARPOL, and more. We assist with vessel and marine structure certification, environmental assessments, and compliance strategies, helping you navigate complex regulatory landscapes.







**Piping System Design:** We create detailed, custom-designed piping systems tailored to your project's specific needs. By utilizing cutting-edge modeling and simulation software, we optimize system performance and efficiency, ensuring seamless operation.

**Plant Layout and Configuration:** Our team supports the strategic planning and layout of plant facilities, ensuring the most efficient workflow and maximizing productivity. We consider space requirements and equipment placement, creating a well-organized, functional design.

**Process Engineering:** Our process engineering services encompass conceptual engineering, FEED studies, and detailed engineering, delivering essential documents such as Process Flow Diagrams, P&IDs, hydraulic calculations, control philosophy, cause and effect diagrams, reports, philosophies, line lists, tie-in lists, and equipment lists to ensure seamless project execution.

**Technical Drafting Services:** Our expert team offers specialized piping system drafting services, tailored to the unique specifications of your project, ensuring precision and clarity in every drawing.



**Material Selection and Specifications:** With in-depth knowledge of fluid dynamics, temperature, pressure, and environmental factors, we provide expert guidance on material selection to ensure compatibility and compliance with industry codes and standards.

**Installation and Construction Oversight:** We oversee the installation of piping systems, ensuring that every step adheres to design specifications and safety regulations. Through rigorous quality control inspections during construction, we guarantee top-tier craftsmanship and safety.

**Maintenance and Inspection Services:** We develop proactive maintenance strategies to enhance the longevity of your piping systems. Through regular inspections and assessments, we identify potential issues early and provide actionable recommendations for maintenance and repairs.

**Stress Analysis :** We conduct advanced stress analysis to assess the durability and reliability of piping systems under a variety of operating conditions.







**Structural Assessment (Lifting Analysis):** We conduct comprehensive structural assessments to evaluate the loads on slings and components, ensuring the structural integrity of both the system and the cargo being lifted.

**Lifting Plan Development:** Our team creates detailed lifting plans tailored to your specific project needs. We outline the procedures, equipment, and safety measures necessary for successful operations while ensuring full compliance with industry standards.

**Pad-eye Design and Analysis:** We design custom pad-eyes that are optimized for your lifting operations, ensuring proper load distribution and maximum structural integrity for safe and effective lifts.

**Rigging Design and Analysis:** Our experts provide rigging design services, including the careful selection of rigging gear and techniques. We perform load calculations and stress analyses to guarantee that the rigging solutions are both safe and effective.



**Equipment Selection and Inspection:** We guide you in selecting the right lifting and rigging equipment for your operations, ensuring that they meet all safety regulations and operational demands. Our thorough inspections ensure that equipment is in top condition and compliant with relevant standards.

**On-Site Assessments:** We conduct site assessments to evaluate lifting and rigging operations, identify potential hazards, and recommend improvements to enhance safety and efficiency on-site. We collaborate with project teams to optimize lifting activities.

**Training and Certification:** We offer expert training programs for personnel, focusing on best practices in lifting and rigging operations. Our programs emphasize safety, compliance, and operational excellence, ensuring your team is fully certified and equipped to handle any challenge.

**Regulatory Compliance:** We ensure that all lifting and rigging activities comply with both local and international regulations. Our team assists in obtaining necessary permits and approvals for specialized lifting operations, helping you navigate complex regulatory landscapes.







**Load-out Engineering:** We design detailed load-out plans, specifying loading procedures, equipment requirements, and safety protocols. Through precise weight distribution and balance assessments on trailers, we ensure stability during transport, performing rigorous stability and hydrostatics checks for flawless execution.

**Mooring Analysis:** Our team crafts customized mooring designs based on vessel type, size, and operational needs. By evaluating environmental factors such as wind, waves, and currents, we simulate and assess the dynamic loading conditions, ensuring robust and reliable mooring systems for any maritime operation.

**Ballast Calculations:** We calculate the optimal ballast distribution needed to maintain vessel stability and trim. Through comprehensive stability analyses, we assess the impact of ballast on a vessel's center of gravity and metacentric height, ensuring that ballast adjustments keep vessels stable and safe under diverse loading conditions.

**Sea-fastening & Cargo Securing Design:** We provide tailored sea-fastening solutions for all types of cargo, including heavy and oversized loads. By conducting structural analyses, we ensure that sea-fastening systems withstand dynamic loading conditions and that weight distribution across the vessel is properly balanced to



**Maritime Feasibility Studies:** Our in-depth feasibility studies assess the viability of new shipping routes, ports, and terminal facilities, analyzing economic, environmental, and operational factors to help you make informed decisions about project feasibility and potential.

**Regulatory Compliance:** We ensure that all sea transportation activities comply with local and international regulations, including safety and environmental standards. Our team provides expert assistance in obtaining the necessary permits and certifications, ensuring that your maritime operations meet the highest regulatory benchmarks.

**Safety Assessments and Risk Management:** We conduct thorough safety assessments, identifying potential hazards in marine operations. By developing risk management plans, we help mitigate safety risks, ensuring safe and efficient transportation practices throughout your project.

**Training:** Equipping professionals with the knowledge and skills to optimize maritime operations safely and efficiently. Our programs cover key areas such as load-out engineering, ballast calculations, mooring analysis, and cargo securing, ensuring participants are well-versed in industry standards and best practices.





# Inspection and Site Supervision

Ensuring Compliance, Safety, and Quality at Every Stage



**Project Oversight:** We provide continuous, hands-on supervision throughout the entire project lifecycle, ensuring strict adherence to design specifications and plans. Our team monitors progress and performance, keeping the project on track and aligned with timelines and milestones.

**Quality Assurance Inspections:** Our rigorous inspections guarantee that products and processes meet established quality standards. We conduct impartial evaluations, identifying defects and ensuring full compliance with specifications, ensuring your project meets its objectives.

**Equipment and Machinery Inspections:** We perform detailed inspections of industrial equipment, evaluating safety, condition, and compliance with operational standards. By identifying maintenance needs early, we help minimize downtime and boost overall productivity.



**Safety and Compliance Audits:** We conduct thorough safety audits to assess adherence to occupational health and safety regulations. Our audits identify potential risks and recommend actionable improvements to enhance workplace safety, safeguarding everyone involved.



**Communication and Coordination:** Serving as the vital link between clients, contractors, and regulatory bodies, we ensure clear communication and seamless coordination among all project stakeholders, aligning everyone with the project's goals and expectations.

**Documentation and Reporting:** Our team maintains meticulous records of all site activities, inspections, and incidents, ensuring full compliance and accountability. Regular progress reports keep stakeholders informed, highlighting achievements and any challenges encountered.

**Problem-Solving Support:** We offer immediate, practical solutions to address on-site challenges, ensuring that project timelines are met without sacrificing quality or safety. Our collaborative approach helps tackle unforeseen issues promptly, keeping the project moving forward smoothly.

**Regulatory Framework Assessment:** We thoroughly review applicable local, national, and international regulations relevant to your project. From the outset, we ensure all plans and activities are fully aligned with regulatory requirements, avoiding costly delays and ensuring compliance at every stage.







**Equipment Selection and Upgrades:** We guide you in selecting the right rolling mill equipment based on specific production requirements and product specifications. Our team assesses current machinery to recommend upgrades or replacements that improve performance, energy efficiency, and long-term reliability.

**Research and Development Support:** Collaborating with global R&D institutions, we provide invaluable technical expertise to support innovation. From testing new technologies to refining existing materials, we help drive breakthroughs that advance product development and manufacturing processes.

**Process Optimization:** We analyze and enhance your manufacturing processes to maximize efficiency and reduce production costs. By integrating best practices and advanced technologies, we help streamline operations, from raw material handling to finished product delivery.

**Energy Efficiency and Sustainability:** Our consultancy identifies opportunities to improve energy efficiency and reduce environmental impact in rolling mill operations. We recommend sustainable practices and technologies that not only boost your bottom line but also enhance your environmental footprint.



**Circular Economy:** We help companies adopt sustainable practices by optimizing resource use, reducing waste, and promoting material reuse throughout the production lifecycle.

**Decarbonization:** Our decarbonizing consultancy service in the steel industry helps companies reduce carbon emissions by identifying and implementing sustainable practices and innovative technologies throughout the production process.

**Project Management and Consultancy:** We offer end-to-end project management services for steel production and construction projects, ensuring that your initiatives are completed on time and within budget.

**Technical Training and Development:** We provide comprehensive training programs tailored to your staff's needs, focusing on industry best practices, safety protocols, and quality control processes.







**Fodrien Consultants FZ-LLC**

FDAM0603, Compass Building

Al Shohada Road

Al Hamra Industrial Zone - FZ

Ras Al Khaimah - United Arab Emirates

Phone: +971 506065477

Email: [info@fodrien.com](mailto:info@fodrien.com) Web: [fodrien.com](http://fodrien.com)