

# VOLTAS *SMART DUCTED* SYSTEMS

*with Extensive Range of Products*



**Ductable Split AC**

**Packaged AC**



## ABOUT VOLTAS

*Voltas Limited is a premier air conditioning and engineering solutions provider and a Projects specialist. Founded in India in 1954, Voltas Limited is part of the Tata Group, with products ranging from Air Conditioners, Air Coolers, Air Purifiers, Water Dispensers, Water Coolers, to Commercial Refrigeration products. The company also offers engineering solutions for a wide spectrum of industries in areas such as heating, ventilation and air conditioning, refrigeration, electromechanical projects, electrification, textile machinery, mining and construction equipment, water management & treatment, cold chain solutions, building management systems, and indoor air quality. The Company has also launched its range of Voltas Beko Home Appliances, through its new JV in India, in equal partnership with Arcelik.*

*Voltas is one of the leading companies within the Tata group and is the undisputed market leader in room air conditioners in India with the largest category distribution network of dealers spread across the country. With state of the art manufacturing facilities at Vadodara and Pantnagar, Voltas possesses end to end capability in manufacturing of room and commercial air conditioners, refrigeration equipment, water coolers including commercial refrigerators and many more products in the air conditioning domain. Our products are futuristically designed and energy efficient for the ever-evolving smart consumer and supported by a highly responsive post sales service network. Founded by Jamsetji Tata in 1868, the Tata group is a global enterprise, headquartered in India, comprising 30 companies across ten verticals. The group operates in more than 100 countries across six continents, with a mission 'To improve the quality of life of the communities we serve globally, through long-term stakeholder value creation based on Leadership with Trust'.*



# WELCOME TO THE WORLD OF COMMERCIAL AC



Voltas has always been synonymous with cooling in India. Our commercial products are known for being the best in category.

Our range of commercial air conditioners are always evolving to surpass customer and environmental standards. Our extensive range of products and services ensures that no matter the cooling requirement for your business, we have the solution.

## OUR RANGE OF COMMERCIAL AC

Chiller | VRF | Ducted and Package AC

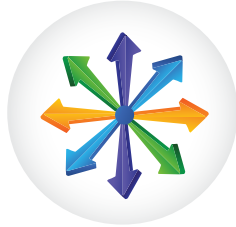
Light commercial (Cassette, Tower, Mega Split and MultiMax)

# VOLTAS MICRO-PROCESSOR CONTROLLED DUCTED SYSTEMS

Designed to meet every cooling need of the customer with extensive range of Ductable & Packaged Air-conditioning units.



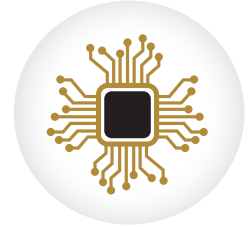
VALUE FOR MONEY



WIDE PRODUCT RANGE



EASE OF SERVICE



IOT ENABLED



Retail Outlets



Restaurants



Hospitals



Educational Institutes



Office Spaces



Server Rooms



Multiplex / Auditoriums



Factories



Standard & high performance products for high airflow & sustaining high ambient conditions.

**PRODUCT LINEUP**

**VOLTAS** Ductable & Packaged Units are available in both **Air-cooled** and **Water-cooled** types making it suitable for every customer need. Voltas Cares for the environment, hence refrigerants\* used in our systems are R410A.

| UNIT TYPE / APPEARANCE  | REFRIGERANT | 5 TR | 5.5 TR | 7.5 TR | 8.5 TR | 10 TR | 11 TR | 15 TR | 17 TR | 20 TR | 21 TR |
|---|-------------|------|--------|--------|--------|-------|-------|-------|-------|-------|-------|
| <p><b>Standard A/C Ceiling suspended Ductable Split Units</b></p>    | R410a       |      | ●      |        | ●      |       | ●     |       | ●     |       | ●     |
| <p><b>Standard W/C Ceiling suspended Ductable Split Units</b></p>  | R410a       |      | ●      |        | ●      |       | ●     |       | ●     |       |       |
| <p><b>Standard A/C Floor Mounted Packaged Units</b></p>            | R410a       |      | ●      |        | ●      |       | ●     |       | ●     |       | ●     |
| <p><b>Standard W/C Floor Mounted Packaged Units</b></p>            | R410a       |      | ●      |        | ●      |       | ●     |       | ●     |       | ●     |

## KEY FEATURES

|   |   |  |   |
|---|---|--|---|
|    | <b>Energy Efficiency</b> <ul style="list-style-type: none"><li>• Energy efficient scroll compressor</li><li>• Internally grooved copper tubes</li><li>• Microprocessor controller</li></ul>                           | <b>Factory Charged Units</b> <ul style="list-style-type: none"><li>• Standard refrigerant charge from factory for all Ductable &amp; W/C Packaged units</li><li>• Reduction in installation &amp; commissioning time</li></ul> |    |
|    | <b>Silent Indoor &amp; Outdoor Units</b> <ul style="list-style-type: none"><li>• Technologically advanced components</li><li>• Insulation to all critical parts</li><li>• Rubber pads for reduced vibration</li></ul> | <b>Slim Ducted IDUs</b> <ul style="list-style-type: none"><li>• Enable high false ceiling height</li><li>• Improved aesthetics</li></ul>   |    |
|    | <b>Space Saving</b> <ul style="list-style-type: none"><li>• Compact sized ODUs &amp; IDUs</li><li>• No floor space required for ductable IDUs</li><li>• ODUs can be installed on wall with bracket</li></ul>          | <b>Indoor Air Quality</b> <ul style="list-style-type: none"><li>• Special synthetic woven filters</li><li>• Easily removable and washable</li><li>• Ensure clean air all the time</li></ul>                                    |   |
|  | <b>Blue Fin treatment</b> <ul style="list-style-type: none"><li>• Anti-corrosive hydrophilic coating</li><li>• Optimum heat exchange in all climates</li></ul>  | <b>Reliability</b> <ul style="list-style-type: none"><li>• Use of sophisticated tooling and machinery</li><li>• Modern R&amp;D facility</li><li>• Best-in-class products</li><li>• High levels of reliability</li></ul>        |  |



### Maintenance Friendly design

- Easy access to all sections
- Ease of serviceability
- Reduction of down time



**MICROPROCESSOR-BASED CONTROLLER**

Advanced Controller installed on all the units offers you the following benefits :



**PACKAGED UNIT CONTROLLER**



**DUCTED UNIT CONTROLLER**



**Large LCD Screen \***  
Easy readability



**Auto Start Mode**  
For automatic start, after a power failure



**Inbuilt Temperature Sensor**  
For precise control within +/- 0.5deg C



**Anti-recycle Timer**  
Compressor starts after set delay, enhancing its life



**4 Modes of Operation**  
Cool, Dry, Fan and Energy Save



**Motor Protection Device**  
Protection from phase reversal, imbalance, overload & single phasing



**Energy Saving Mode \***  
Auto switch-off of condenser fans when compressor trips



**Fan Speed Selection \***  
Low, Medium, High, Auto



**Self-Diagnosis Function**  
Constant monitoring of errors with alarms



**Optional Touch Controller for PAC**  
Makes your unit look SMART



**Equalization of Compressor Runtime**  
Ensures a longer life for compressors



**On /Off Timer\***  
Schedule your AC run-time in a day

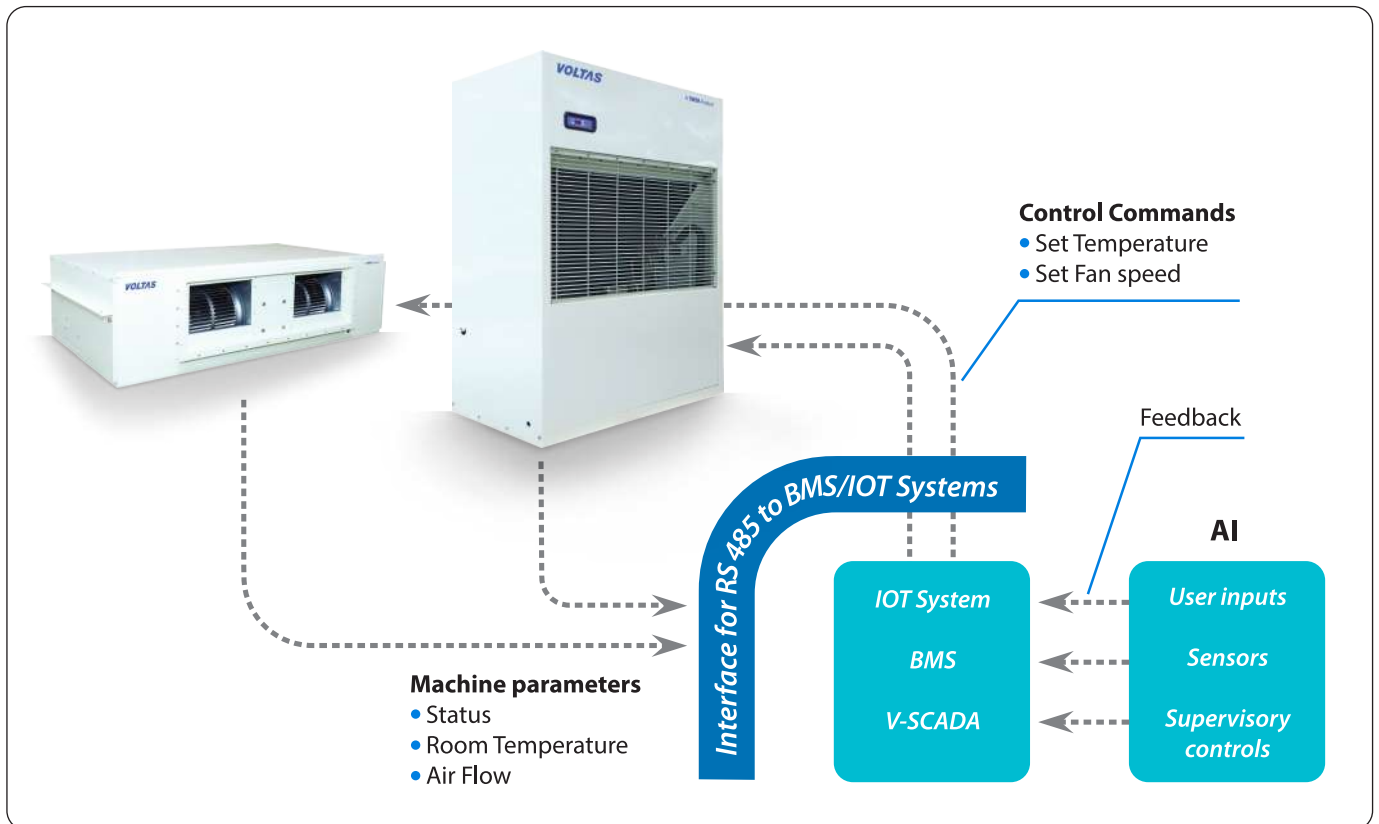
\* Applicable only for ducted units controller

## MONITORING AT YOUR FINGERTIPS



### Intelligent Communication Port as a standard feature

Both Packaged and Ducted Split Units have controllers suitable for RS 485 communication. It comes in handy when connecting the units to third party BMS.



### Also, Complete system can be wired



# TECHNICAL DATA - AIR COOLED UNITS



| A/C DUCTABLE SPLIT UNITS (R410a)  |         |   |                                  |                                  |                                  |                                    |                                    |
|-----------------------------------|---------|---|----------------------------------|----------------------------------|----------------------------------|------------------------------------|------------------------------------|
| Nominal Capacity                  | TR      | 5.5 TR  | 8.5 TR                           | 11 TR                            | 11 TR                            | 17 TR                              | 21 TR                              |
| Set Model no.                     |         | ACADS05513  | ACADS08513                       | ACADS11013                       | ACADS11023                       | ACADS17023                         | ACADS21023                         |
| ODU Model                         |         | ACDCUA05513   | ACDCUA08513                      | ACDCUA11013                      | ACDCUA05513                      | ACDCUA08513                        | ACDCUA11013                        |
| IDU Model                         |         | ACDEU55CZGIMRC410   | ACDEU85CZGIMR410                 | ACDEU110C1ZGIMR410               | ACDEU110C2ZGIMR410               | ACDEU170C2ZGIMR410                 | ACDEU210C2ZGIM                     |
| INDOOR UNITS (IDU)                |         |   |                                  |                                  |                                  |                                    |                                    |
| Airflow                           | CHM     | 3740  | 5780                             | 7480                             | 7480                             | 11560                              | 14960                              |
| Evaporator Fan                    |         | Centrifugal Forward Curved Fan, Double Inlet Double Width |                                  |                                  |                                  |                                    |                                    |
| Power Supply                      | V/Ph/Hz | 230 V - 1 Ph - 50 Hz (2 Wire, AC Supply)                  |                                  |                                  |                                  |                                    |                                    |
| Length                            | mm      | 1171  | 1508                             | 1859                             | 1859                             | 2059                               | 2100                               |
| Depth                             | mm      | 655   | 830                              | 779                              | 779                              | 750                                | 1240                               |
| Height                            | mm      | 485   | 407                              | 575                              | 575                              | 575                                | 640                                |
| Net weight                        | kg      | 60  | 90                               | 125                              | 125                              | 180                                | 220                                |
| OUTDOOR UNITS (ODU)               |         |   |                                  |                                  |                                  |                                    |                                    |
| No. of Units/Set                  |         | 1   | 1                                | 1                                | 2                                | 2                                  | 2                                  |
| No. of Compressors/CU             |         | 1   | 1                                | 1                                | 1                                | 1                                  | 1                                  |
| Compressor Type                   |         | Hermetic Scroll   |                                  |                                  |                                  |                                    |                                    |
| Power Supply                      | V/Ph/Hz | 3 Ph - 415 V - 50 Hz - 4 wire (R,Y,B,N) + G (Earth)       |                                  |                                  |                                  |                                    |                                    |
| Condenser fan                     |         | Axial   |                                  |                                  |                                  |                                    |                                    |
| No. of Fans/CU                    |         | 1   | 1                                | 2                                | 1                                | 1                                  | 2                                  |
| Length/CU                         | mm      | 1200  | 1200                             | 1550                             | 1200                             | 1200                               | 1550                               |
| Depth/CU                          | mm      | 450   | 575                              | 575                              | 450                              | 575                                | 575                                |
| Height/CU                         | mm      | 960   | 960                              | 966                              | 960                              | 960                                | 966                                |
| Net weight/CU                     | kg      | 130   | 145                              | 160                              | 130                              | 145                                | 160                                |
| Liquid Line Size                  | mm      | 12.7  | 15.8                             | 15.8                             | 12.7                             | 15.8                               | 15.8                               |
| Suction Line Size                 | mm      | 19  | 28.5                             | 28.5                             | 19                               | 28.5                               | 28.5                               |
| MCB Rating                        | A       | 32  | 63                               | 63                               | 63                               | 100 SFU / MCCB                     | 125 SFU / MCCB                     |
| Cable Size (Material)- Incomer    | Sq.mm   | 4C x 6 (Cu) /<br>4C x 10 (Al)                             | 4C x 16 (Cu) /<br>3.5C x 25 (Al) | 4C x 16 (Cu) /<br>3.5C x 25 (Al) | 4C x 16 (Cu) /<br>3.5C x 25 (Al) | 3.5C x 25 (Cu) /<br>3.5C x 35 (Al) | 3.5C x 35 (Cu) /<br>3.5C x 50 (Al) |
| Cable Size (Material)- ODU to IDU | Sq.mm   | 3C x 1.5 (Cu)   | 3C x 1.5 (Cu)                    | 3C x 1.5 (Cu)                    | 3C x 1.5 (Cu)                    | 3C x 1.5 (Cu)                      | 3C x 1.5 (Cu)                      |

| W/C DUCTABLE SPLIT UNITS (R410A)  |         |   |                             |                             |                             |                                  |                                  |
|-----------------------------------|---------|---|-----------------------------|-----------------------------|-----------------------------|----------------------------------|----------------------------------|
| Nominal capacity                  | TR      | 5.5 TR  | 8.5 TR                      | 11 TR                       | 11 TR                       | 17 TR                            | 21 TR                            |
| Set Model no.                     |         | ACWDS05513  | ACWDS08513                  | ACWDS11023                  | ACWDS11023                  | ACWDS17023                       | ACWDS21023                       |
| ODU Model                         |         | ACDCUWSC05513   | ACDCUWSC08513               | ACDCUWSC05513               | ACDCUWSC05513               | ACDCUWSC08513                    | ACDCUWSC08513                    |
| IDU Model                         |         | ACDEU55CZGIMRC410   | ACDEU85CZGIMR410            | ACDEU110C2ZGIMR410          | ACDEU110C2ZGIMR410          | ACDEU170C2ZGIMR410               | ACDEU210C2ZGIM                   |
| INDOOR UNITS (IDU)                |         |   |                             |                             |                             |                                  |                                  |
| Airflow                           | CMH     | 3740  | 5780                        | 7480                        | 7480                        | 11560                            | 14960                            |
| Evaporator Fan                    |         | Centrifugal Forward Curved Fan, Double Inlet Double Width |                             |                             |                             |                                  |                                  |
| Power Supply                      | V/Ph/Hz | 230 V - 1 Ph - 50 Hz (2 Wire, AC Supply)                  |                             |                             |                             |                                  |                                  |
| L x D x H                         | mm      | 1171 x 655 x 485  | 1508 x 830 x 407            | 1859 x 779 x 575            | 1859 x 779 x 575            | 2059 x 750 x 575                 | 2100 x 750 x 575                 |
| Net weight                        | kg      | 60  | 90                          | 125                         | 125                         | 180                              | 220                              |
| OUTDOOR UNITS (ODU)               |         |   |                             |                             |                             |                                  |                                  |
| No. of Units/Set                  |         | 1   | 1                           | 2                           | 2                           | 2                                | 2                                |
| No. of Compressors/CU             |         | 1   | 1                           | 1                           | 1                           | 1                                | 1                                |
| Compressor Type                   |         | Hermetic Scroll   |                             |                             |                             |                                  |                                  |
| Power Supply                      | V/Ph/Hz | 3 Ph - 415 V - 50 Hz - 4 wire (R,Y,B,N) + G (Earth)       |                             |                             |                             |                                  |                                  |
| Condenser Water (In/Out)          | Inch    | 1-1/4" BSP  | 1-1/4" BSP                  | 1-1/4" BSP                  | 1-1/4" BSP                  | 1-1/4" BSP                       | 1-1/4" BSP                       |
| Water Flow Rate/CU                | LPM     | 73  | 116                         | 73                          | 73                          | 116                              | 116                              |
| Length x Depth x Height /CU       | mm      | 900 x 665 x 615   | 900 x 665 x 615             | 900 x 665 x 615             | 900 x 665 x 615             | 900 x 665 x 615                  | 900 x 665 x 615                  |
| Net weight/CU                     | kg      | 155   | 170                         | 155                         | 155                         | 170                              | 170                              |
| liquid line Size                  | mm      | 12.7  | 15.8                        | 12.7                        | 12.7                        | 15.8                             | 15.8                             |
| Suction Line Size                 | mm      | 19  | 28.5                        | 19                          | 19                          | 28.5                             | 28.5                             |
| MCB Rating                        | A       | 25  | 50                          | 50                          | 50                          | 100 SFU / MCCB                   | 125 SFU / MCCB                   |
| Cable Size (Material)- Incomer    | Sq.mm   | 4C x 4 (Cu) / 4C x 6 (Al)                                 | 4C x 10 (Cu) / 4C x 16 (Al) | 4C x 10 (Cu) / 4C x 16 (Al) | 4C x 10 (Cu) / 4C x 16 (Al) | 3.5 C x 25 (Cu) / 3.5C x 25 (Al) | 3.5 C x 25 (Cu) / 3.5C x 25 (Al) |
| Cable Size (Material)- ODU to IDU | Sq.mm   | 3C x 1.5 (Cu)   | 3C x 1.5 (Cu)               | 3C x 1.5 (Cu)               | 3C x 1.5 (Cu)               | 3C x 1.5 (Cu)                    | 3C x 1.5 (Cu)                    |

**Notes:**

- The nominal capacities mentioned are at rating conditions as per IS 8148.
- The Gas charging at Factory is as per standard connection distance between ODU & IDU. For extra lengths, Gas topping up at site is required.
- The piping sizes given are recommended for 7.5 m equivalent length between ODU & IDU. For longer piping lengths, please contact Voltas representative.
- In addition to mentioned above, one more interlocking cable of size 3C x 1.5 sq mm is required between IDU & ODU
- Please contact VOLTAS sales representative for units below 5.5TR capacity & Condensing Units.

# TECHNICAL DATA - PACKAGED UNITS

| A/C PACKAGED UNITS (R410a)          |         |   |  |   |  |   |
|-------------------------------------|---------|---|--|---|--|---|
| Nominal Capacity                    | TR      | 5.5 TR  | 8.5 TR   | 11 TR                                       | 17 TR  | 21 TR                                       |
| Set Model no                        |         | ACDPUASC05513C  | ACDPUASC08513C                                       | ACDPUASC11023C                              | ACDPUASC17023C                                       | ACDPUASC21023C                              |
| IDU Model                           |         | ACDPEUASC05513C   | ACDPEUASC08513C                                      | ACDPEUASC11023C                             | ACDPEUASC17023C                                      | ACDPEUASC21023C                             |
| ODU Model                           |         | ACPDSC5   | ACPDSC85   | ACPDSC5 X2                                  | ACPDSC85 X 2   | ACPDSC110 X 2                               |
| INDOOR UNITS (IDU)                  |         |   |  |   |  |   |
| Airflow                             | CMH     | 3740  | 5780   | 7480  | 11560  | 14960                                       |
| No. of Compressors                  |         | 1   | 1  | 2   | 2  | 2   |
| Compressor Type                     |         | Hermetic Scroll   |  |   |  |   |
| Power Supply                        | V/Ph/Hz | 3 Ph - 415 V - 50 Hz - 4 wire (R,Y,B,N) + G (Earth)       |  |   |  |   |
| Evaporator Fan                      |         | Centrifugal Forward Curved Fan, Double Inlet Double Width |  |   |  |   |
| Length                              | mm      | 961   | 961  | 1160  | 1428   | 1941  |
| Depth                               | mm      | 731   | 731  | 736   | 800  | 800   |
| Height                              | mm      | 1430  | 1430   | 1480  | 1560   | 1560  |
| Net weight                          | kg      | 153   | 153  | 217   | 350  | 450   |
| OUTDOOR UNITS (ODU)                 |         |   |  |   |  |   |
| No. of Condensers                   |         | 1   | 1  | 2   | 2  | 2   |
| Power Supply                        | V/Ph/Hz | 230 V - 1 Ph - 50 Hz<br>(2 Wire, AC Supply)               | 3 Ph - 415 V - 50 Hz - 3 wire<br>(R,Y,B) + G (Earth) | 230 V - 1 Ph - 50 Hz<br>(2 Wire, AC Supply) | 3 Ph - 415 V - 50 Hz - 3 wire<br>(R,Y,B) + G (Earth) | 230 V - 1 Ph - 50 Hz<br>(2 Wire, AC Supply) |
| Condenser fan                       |         | Axial   |  |   |  |   |
| No. of Fans/Condenser               |         | 1   | 1  | 1   | 1  | 2   |
| Length/Condenser                    | mm      | 1200  | 1200   | 1200  | 1200   | 1550  |
| Depth/Condenser                     | mm      | 450   | 575  | 450   | 575  | 575   |
| Height/Condenser                    | mm      | 960   | 960  | 960   | 960  | 966   |
| Net weight/Condenser                | kg      | 95  | 107  | 95  | 107  | 119   |
| Liquid Line Size                    | mm      | 9.52  | 12.7   | 9.52  | 12.7   | 12.7  |
| Hot gas Line Size                   | mm      | 12.7  | 22.22  | 12.7  | 22.22  | 22.22                                       |
| MCB Rating                          | A       | 32  | 50   | 63  | 63   | 100 SFU / MCCB                              |
| Cable Size (Material) - Incomer     | Sq.mm   | 4C x 4 Cu / 4C x 6 Al                                     | 4C x 10 Cu / 4C x 16 Al                              | 4C x 10 Cu / 4C x 16 Al                     | 4C x 10 (Cu) / 4C x 16 (Al)                          | 3.5C x 25 Cu / 3.5C x 35 Al                 |
| Cable Size (Material) - IDU to ODU* | Sq.mm   | 2C x 1.5 Cu   | 3C x 1.5 Cu  | 2C x 1.5 Cu                                 | 3C x 1.5 (Cu)  | 2C x 1.5 Cu                                 |

| W/C PACKAGED UNITS (R410A)     |         |   |                           |                             |                             |                                 |
|--------------------------------|---------|---|---------------------------|-----------------------------|-----------------------------|---------------------------------|
| Nominal capacity               | TR      | 5.5 TR  | 8.5 TR                    | 11 TR                       | 17 TR                       | 21 TR                           |
| Set Model no.                  |         | ACDPUWSC05513                                       | ACDPUWSC08513             | ACDPUWSC11023               | ACDPUWSC17023               | ACDPUWSC21023                   |
| IDU model                      |         | ACDPEUWSC05513                                      | ACDPEUWSC08513            | ACDPEUWSC11023              | ACDPEUWSC17023              | ACDPEUWSC21023                  |
| INDOOR UNITS (IDU)             |         |   |                           |                             |                             |                                 |
| Airflow                        | CMH     | 3740  | 5780                      | 7480                        | 11560                       | 14960                           |
| No. of Compressors             |         | 1   | 1                         | 2                           | 2                           | 2                               |
| Compressor Type                |         | Hermetic Scroll                                     |                           |                             |                             |                                 |
| Power Supply                   | V/Ph/Hz | 3 Ph - 415 V - 50 Hz - 4 wire (R,Y,B,N) + G (Earth) |                           |                             |                             |                                 |
| No. of Condenser               |         | 1   | 1                         | 2                           | 2                           | 2                               |
| water Inlet/Outlet Size        | Inch    | 1-1/4" BSP  | 1-1/4" BSP                | 1-1/4" BSP                  | 1-1/4" BSP                  | 1-1/4" BSP                      |
| Water Flow Rate/Condenser      | LPM     | 73  | 116                       | 73                          | 116                         | 290                             |
| Length                         | mm      | 961   | 961                       | 1160                        | 1428                        | 1941                            |
| Depth                          | mm      | 731   | 731                       | 736                         | 800                         | 800                             |
| Height                         | mm      | 1661  | 1661                      | 1798                        | 1873                        | 1873                            |
| Net weight                     | kg      | 252   | 260                       | 350                         | 480                         | 615                             |
| MCB Rating                     | A       | 25  | 32                        | 40                          | 63                          | 100 SFU / MCCB                  |
| Cable Size (Material)- Incomer | Sq.mm   | 4C x 4 (Cu) / 4C x 6 (Al)                           | 4C x 4 (Cu) / 4C x 6 (Al) | 4C x 10 (Cu) / 4C x 16 (Al) | 4C x 10 (Cu) / 4C x 16 (Al) | 3.5C x 25 (Cu) / 3.5C x 35 (Al) |

**Notes:**

- The nominal capacities mentioned are at rating conditions as per IS 8148.
- Only Water-Cooled units are Factory Gas charged & Air-cooled units are to be charged at site.
- The piping sizes given are recommended for 7.5 m equivalent length between ODU & IDU. For longer piping lengths, please contact Voltas representative.
- \*The cable for the condenser motors has to be carried out as per the cable sizes indicated between the Indoor unit and the Outdoor unit. For 3 Phase condenser fan motor the cable needs to be directly terminated in the corresponding compressor contactor by matching the phase. The no of cable to be run is the same as the no of fans per condensing unit.

**VOLTAS**

# SMART MICRO-PROCESSOR CONTROLLED PACKAGE & DUCTED SYSTEMS\*

**NEW  
LAUNCH**

R410A Water Cooled  
Ductable and Packaged AC  
Available range from  
5.5 TR to 21 TR  
(5.5, 8.5, 11, 17 & 21 TR)



R410a



\*AVAILABLE IN INVERTER SERIES

**BMS COMPATIBLE**

# Providing the most efficient and reliable after sales service solutions



TATA Steel - Kalinganagar



TCS Siruseri - Chennai



Kolkata Airport



Rashtrapati Bhavan



Delhi/Chennai Metro Rail Project



Magarpatta City - Pune

Voltas service solutions are offered throughout India for more than 2 million TR of HVAC equipment across Commercial, Industrial and Urban Infrastructure segments.



## Voltas Customer Care

# LIFE CYCLE SUPPORT

Through MANAGED Services



Remote Monitoring



Digital Service Reports



24x7 Helpdesk

## ONE-STOP- SOLUTION FOR LIFECYCLE MANAGEMENT OF YOUR COOLING EQUIPMENT

- We have the widest service network in the country
- Our expertise lies in HVAC equipment and the product life cycle management will be less when we provide cost effective annual maintenance contracts
- We are brand agnostic and offer solutions for maintaining any Chillers
- We also assist to modify, revamp or upgrade your old HVAC system - We are there for you
- We provide IOT for large HVAC system in industrial, commercial and retail applications
- We improvise indoor air quality (IAQ)



**Voltas National Network**  
Easy Access • Quick Satisfaction

Customer Care  
**9100660100**

- Electro-mechanical Services
- HVAC
- Refrigeration
- Value Added Services

- MAIN PLANT
- HEAD OFFICE
- ZONAL OFFICES
- BRANCH OFFICES
- AREA OFFICES

# ***VOLTAS***

A **TATA** Product

## **CUSTOMER CARE SUPPORT**

---

### **VOLTAS LIMITED**

Commercial Air Conditioning Business, Voltas House 'B', 3rd Floor, T.B.Kadam Marg, Chinchpokli, Mumbai – 400033, India. Tel.: +91 22 6665 6857. Customer Care: 9100660100

Email: [cac enquiry@voltas.com](mailto:cac enquiry@voltas.com)

Website: [www.voltas.com](http://www.voltas.com)

---

**NORTH ZONE:** DELHI (011) 66505550/ 66505647 **CHANDIGARH** (0172) 4111800 **JAIPUR** (0141) 6541011 **LUCKNOW** 8840739788 **EAST ZONE:** KOLKATA (033) 66266200/66266201/66266205 **BHUBANESHWAR** (0674) 2544919 **RAIPUR** (077) 14033886 **JAMSHEDPUR** (0657) 6622365/6622377 **WEST ZONE:** MUMBAI (022) 66656666 **NAGPUR** (0712) 6456894 **AHMEDABAD** (079) 66301100 **PUNE** (020) 68687400 **SOUTH ZONE:** CHENNAI (044) 66760333/66760341 **BENGALURU** (080) 22535600 **HYDERABAD** (040) 66743030 **COCHIN** (0484) 6605546.