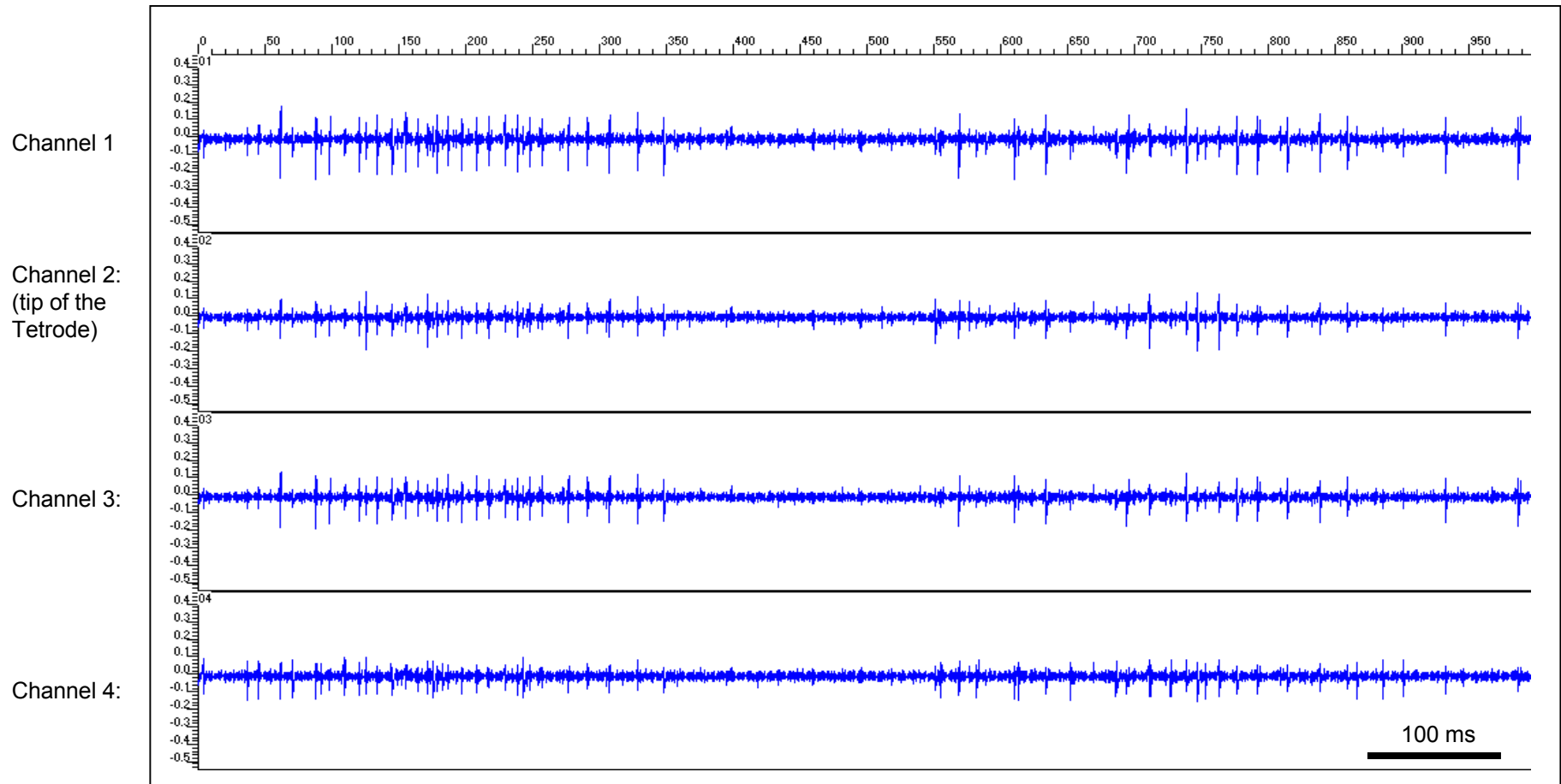


Intraoperative Microelectrode Recording with a 4-Channel Tetrode

October 31, 2001 University Clinic Heidelberg, Germany

Depth of the electrode from the guide tube: 3986 μm

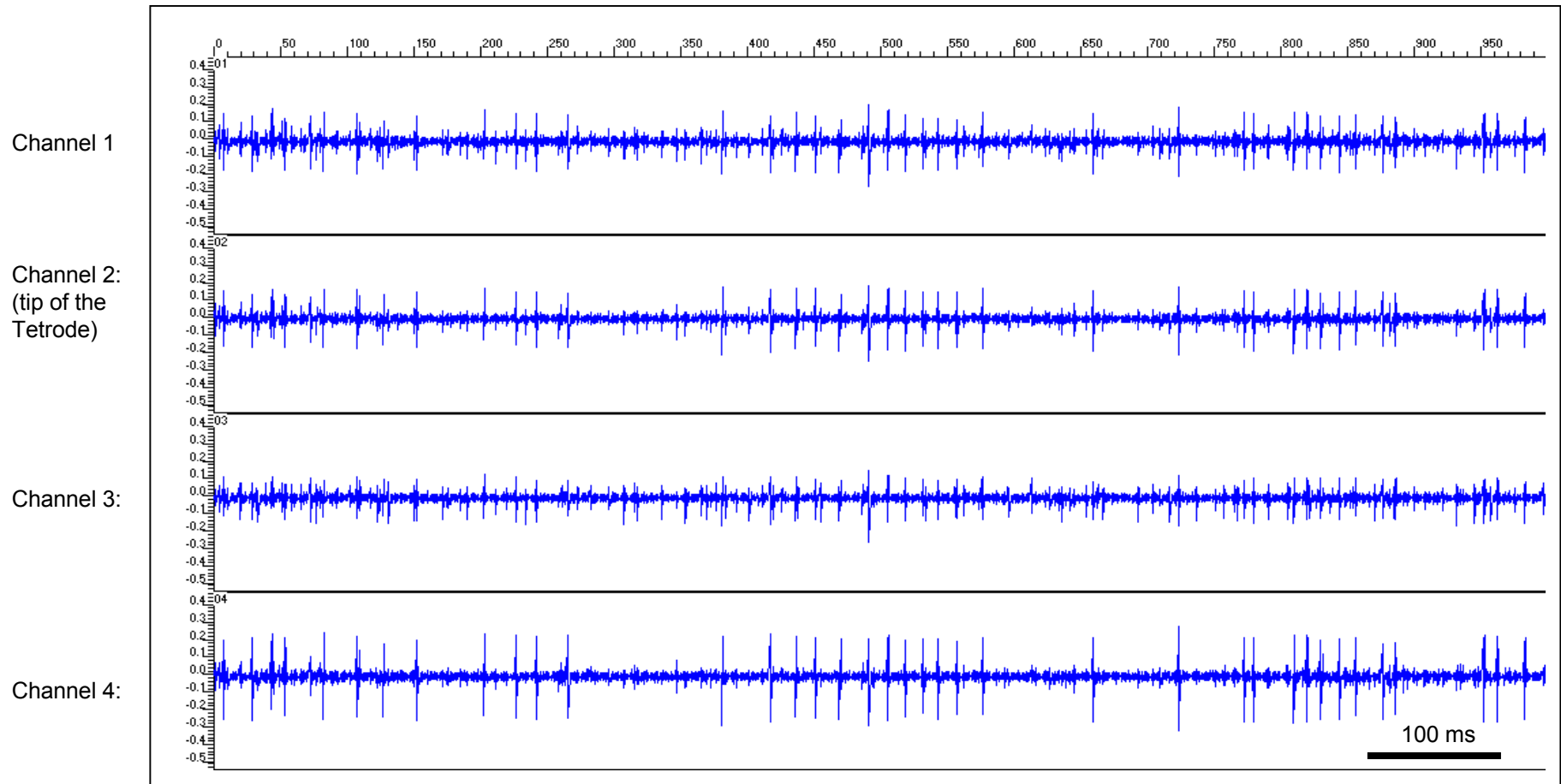
Comments: in „bursts“ grouped activity



Intraoperative Microelectrode Recording with a 4-Channel Tetraode

October 31, 2001 University Clinic Heidelberg, Germany

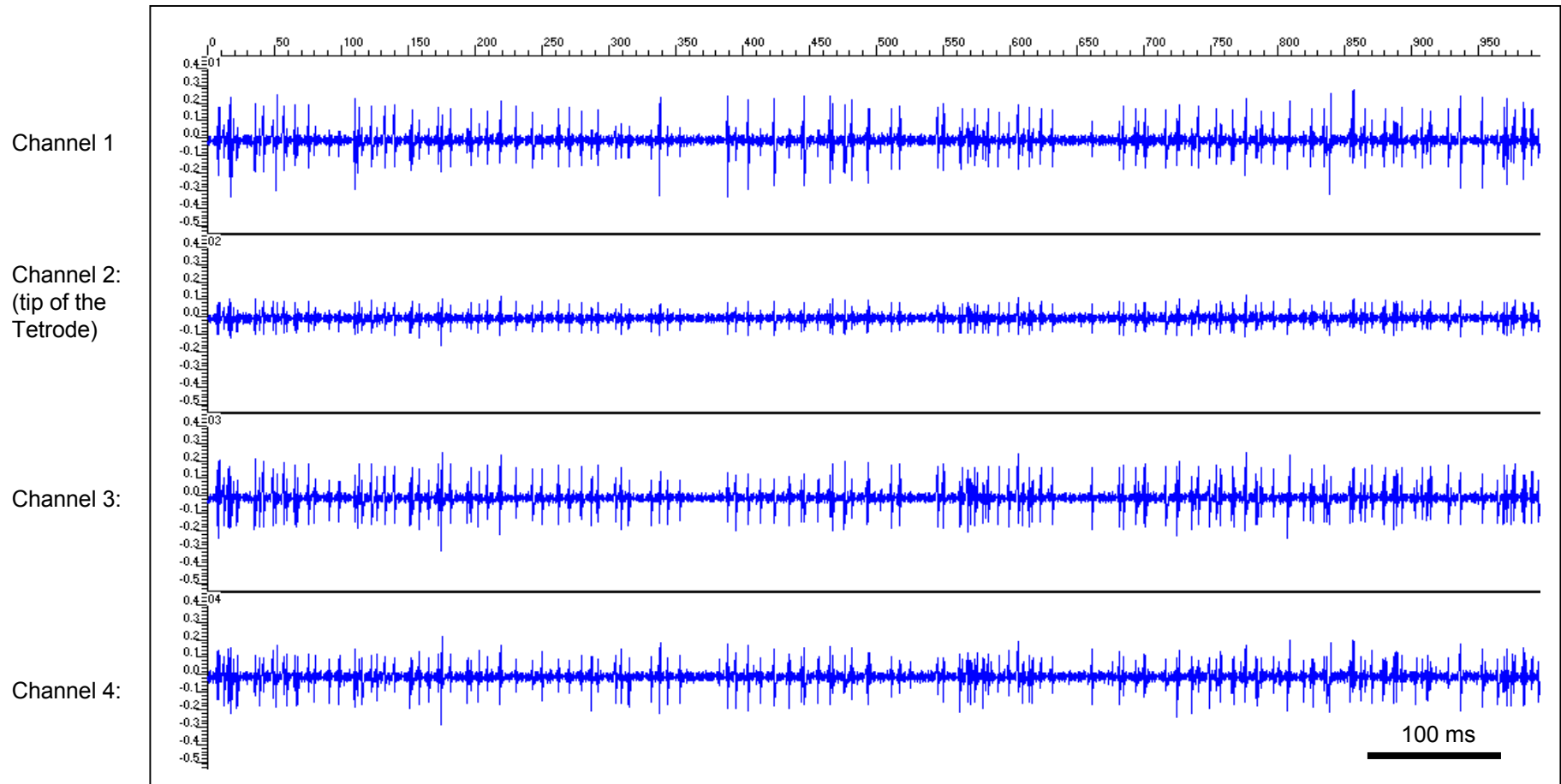
Depth of the electrode from the guide tube: 4059 μm Comments: große APs, evtl. Borderline-Zellen zum GPI



Intraoperative Microelectrode Recording with a 4-Channel Tetraode

October 31, 2001 University Clinic Heidelberg, Germany

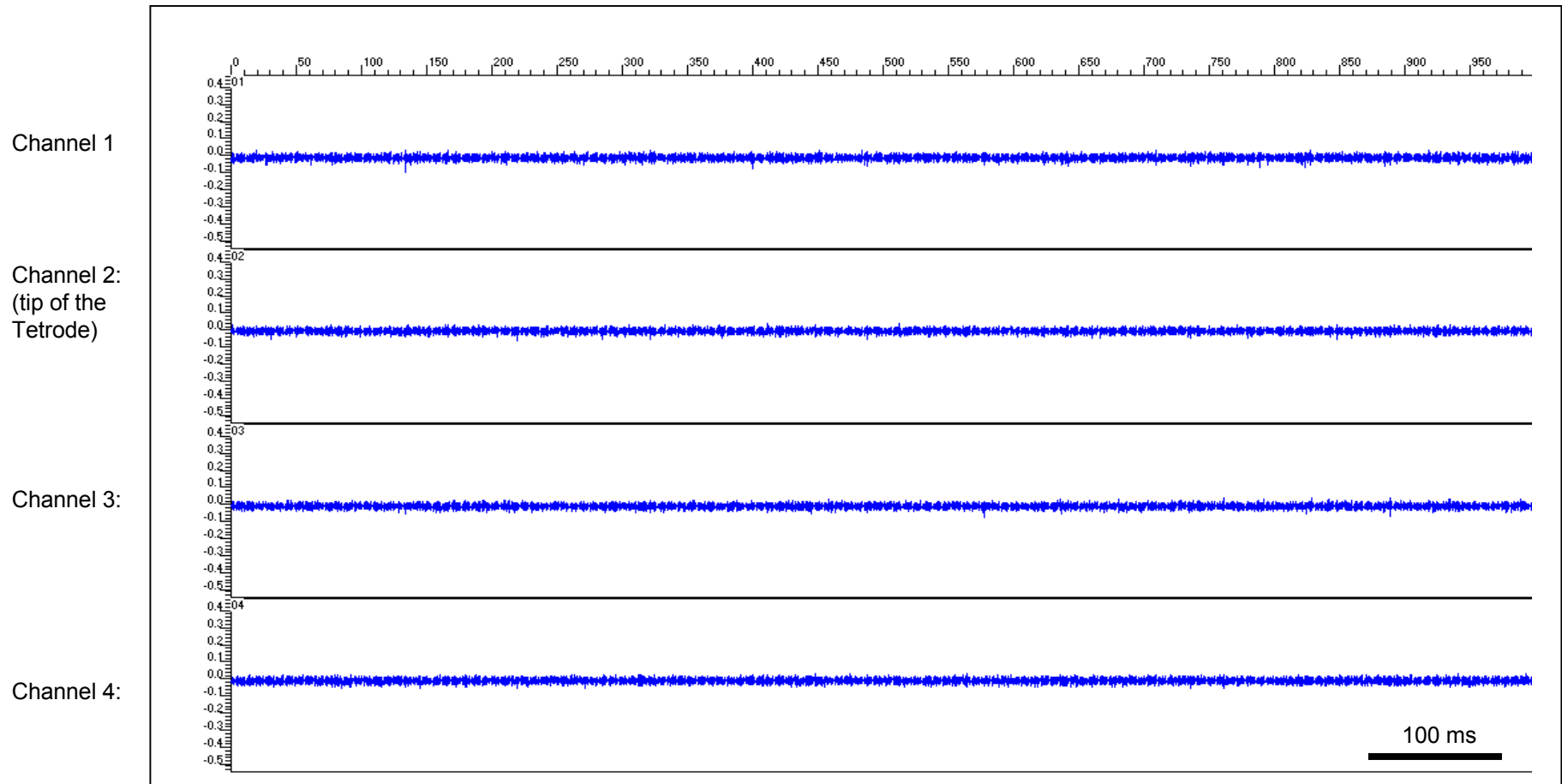
Depth of the electrode from the guide tube: 5682 μm Comments: evtl. GPi



Intraoperative Microelectrode Recording with a 4-Channel Tetraode

October 31, 2001 University Clinic Heidelberg, Germany

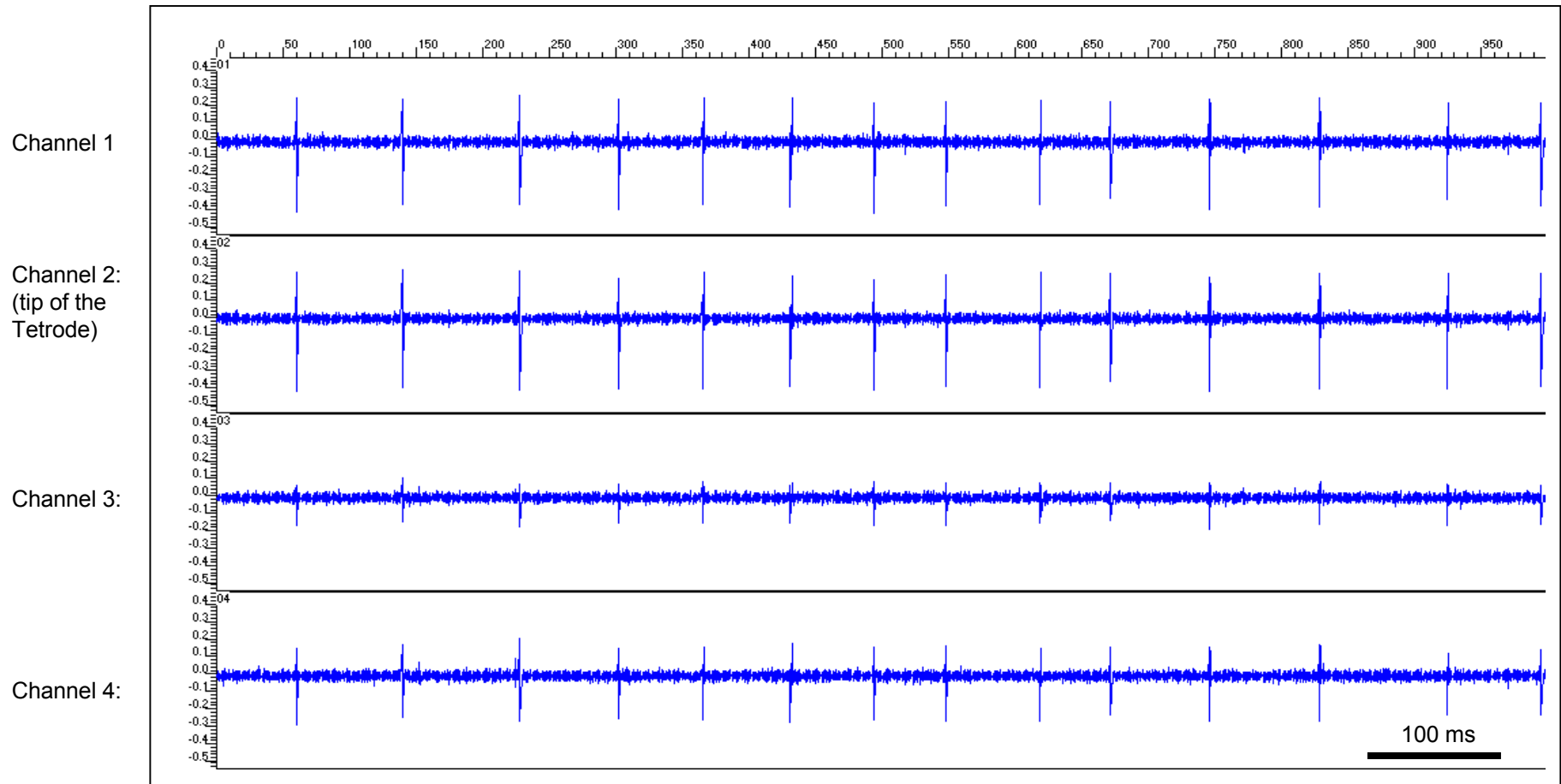
Depth of the electrode from the guide tube: 9500 μm Comments: quiet zone



Intraoperative Microelectrode Recording with a 4-Channel Tetraode

October 31, 2001 University Clinic Heidelberg, Germany

Depth of the electrode from the guide tube: 10889 μm Comments: regular spikes



Intraoperative Microelectrode Recording with a 4-Channel Tetraode

October 31, 2001 University Clinic Heidelberg, Germany

„Spike-sorting“ diagram of three different cells in the tetraode signal:

