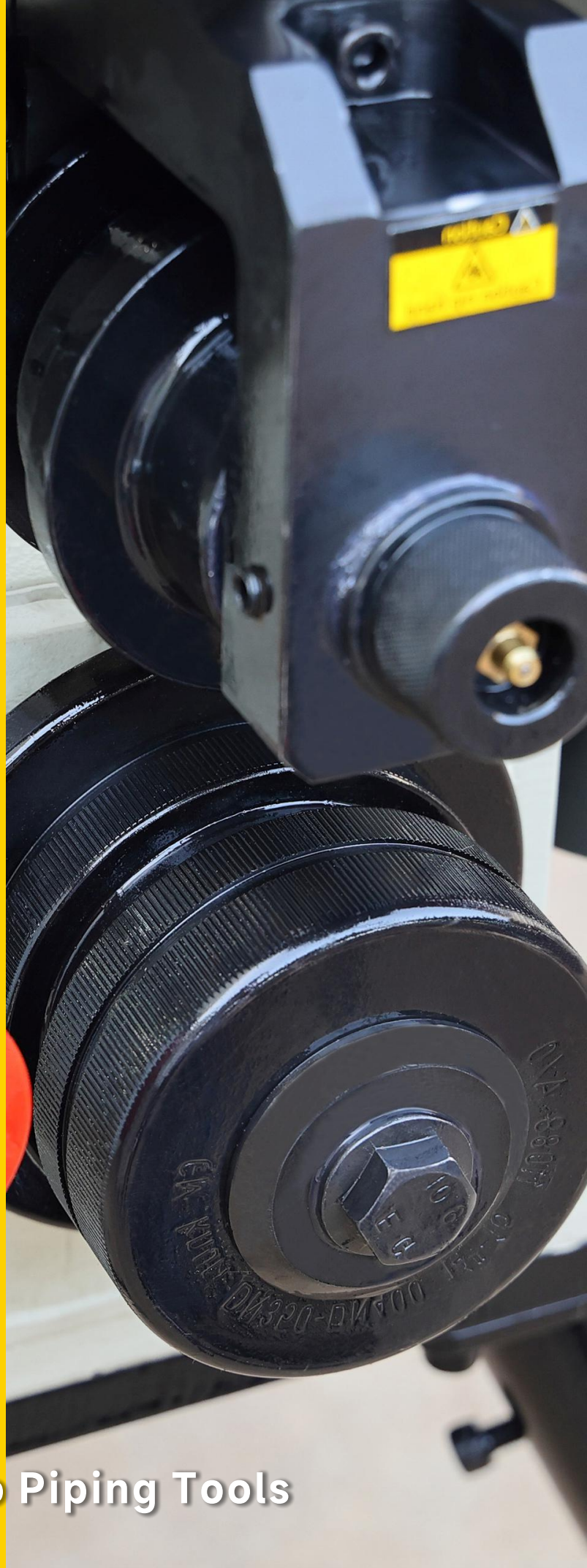


General Catalog Piping Tools

Selected products

2025

Dedicated to Piping Tools





GRUV
MASTER

WELPING

Innovative and reliable high quality piping tools and machines for the jobs on construction sites all around the globe

gruvmastertools.com

Your One-stop Partner for Pipe Grooving Solutions

Hydraulic Roll Grooving

Designed for small-medium-large diameter steel pipes, size covers from 1" upto 32" in various models

Unique hydraulic system for long-time use and stable performance

Ideal for fire protection, HVAC, and industrial piping projects

Size combinations:

1"-8", 2"-8"

1"-12", 2"-12"

2"-16"

8"-24", 8"-32"

P1-P12



Automatic Roll Grooving

One-button operation with automatic feeding, positioning, and grooving

Designed for prefabrication workshops and high-output environments

PLC control system for consistency and efficiency

Accurate groove depth control for high-standard applications

Size combinations:

2"-12", 8"-24"

P13-P14

Pipe Fitting Roll Grooving

Specially designed for elbows, tees, flanges, and other fittings

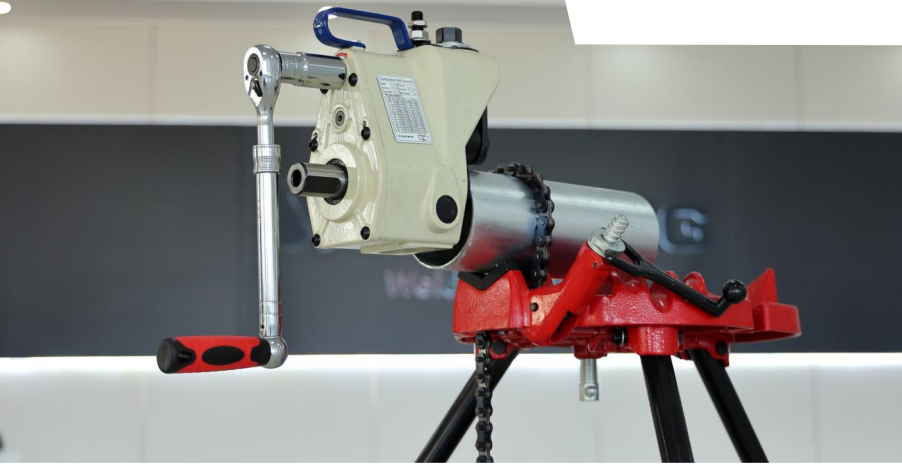
Adjustable clamping and mold structure for various geometries

Commonly used in fitting manufacturing and prefab plants

P15



Combination Roll Groover



Compact and portable, suitable for fieldwork or tight spaces
Hand operating, or work with power drives and threading machines

Size combinations:

1"-6", 1"-12"

1 1/4"-6"

2"-6"

P17-P21

Groove Cutting Machine

P22

Cutting-based grooving avoids pipe deformation and material stress
Equipped with hardened cutting tools for high-strength steel or stainless steel
Delivers high groove accuracy
Ideal for mining, heavy industry, and thick-wall piping systems
Size combinations:
2"-12"
8"-32"



Groove Reforming Machine

P16

Restores roundness after grooving to ensure tight connections
Improves sealing performance and installation efficiency
Size combinations:
2"-12", 2"-24"

1"~8"



RG-1X

Electric Hydraulic Roll Grooving Machine

Design Features

- The RG-1X Roll Grooving Machine is engineered for grooving steel and stainless steel pipes ranging from 1" to 8" (DN25~DN200), suitable for SCH10 to SCH40.
- Highly versatile, the RG-1X is ideal for both high-volume workshop use and flexible on-site applications. It features an integrated design with motor, hydraulic feeding pump, foot switch, and pipe stand for efficient and reliable grooving.
- The built-in high-performance gear reduction motor, combined with an integrated hydraulic feeding pump and groove depth lock nut, ensures a compact design, low noise operation, and consistent, high-quality grooving with excellent efficiency.

Specifications

Fabrication Capacity:	1"~8" (DN25~DN200, Φ33~Φ219) SCH10/40 Steel Pipe
Max Wall Thickness:	8mm
Output Speed:	23R.P.M
Gross Weight:	98kgs
Packing Size:	73*40*77cm

Drive Unit

Catalog No.	Phase	Power	Voltage	Frequency
900010	Single	800W	220V	50/60Hz
900011	Single	800W	110V	50/60Hz

Standard

Catalog No.	Description	N.W (kg)	Ref No.
911042	Drive roller 1"~1 1/2" (Φ33~Φ48)	1.10	①
911043	Drive roller 2"~6" (Φ60~Φ168)	1.30	②
911044	Drive roller 8" (Φ219)	1.40	③
912011	Groove roller 1"~1/2" (Φ33~Φ48)	0.40	④
912012	Groove roller 2"~6" (Φ60~Φ168)	0.45	⑤
912013	Groove roller 8" (Φ219)	0.45	⑥
998078	Pipe stand for 1"~8" (Φ33~Φ219)	6.90	⑦

Optional

Catalog No.	Description	N.W (kg)	Ref No.
998026	Foot Switch	1.5	⑧



Drive Roller



Groove Roller



1"~8"

Extensive Models
for 1"-8" grooving



RG-1C

With 4 wheels stand



RG-1A

With 4-legs foldable stand

2"~8"



RG-7X

Electric Hydraulic Roll Grooving Machine

Design Features

- Model RG-7X standard-duty Roll Grooving Machine is designed to roll grooves on steel pipes and Stainless Steel. from 2"-8" (DN50~DN200) SCH10 / SCH40.
- The lightweight and compact design of this product is a cost-effective solution that can help save investment on grooving machines. It provides a convenient alternative to heavy-duty models. This makes it an ideal choice for standard to light-duty applications.
- The interlocking structure of groove roller and drive roller ensures precise control of the pipe sealing surface length.
- Inbuilt high-performance gear reducing motor contributes compact size and low noise.

Specifications

Fabrication Capacity:	2"~8" (DN50~DN200, Φ60~Φ219) SCH10/40 Steel Pipe
Max Wall Thickness:	8 mm
Output Speed:	30R.P.M
Gross Weight:	84kgs
Packing Size:	68*40*72cm

Drive Roller



Groove Roller



Drive Unit

Catalog No.	Phase	Power	Voltage	Frequency
900070	Single	800W	220V	50/60Hz
900071	Single	800w	110V	50/60Hz

Standard

Catalog No.	Description	N.W (kg)	Ref No.
911226	Drive roller 2"~2.5" (Φ60~Φ73)	0.4	①
911227	Drive roller 3-6" (Φ89-168)	0.8	②
911228	Drive roller 8" (Φ219)	1	③
912094	Groove roller 2-6" (Φ60-168)	0.5	④
912095	Groove roller 8" (Φ219)	0.58	⑤
998169	Pipe stabilizer	2	⑥
998028	Pipe Stand	2.20	⑦

2"~8"



RG-3

Light-duty Electric Hydraulic Roll Grooving Machine

Design Features

- Model RG-3 light-duty Electric Hydraulic Roll Grooving Machine is designed to roll grooves on steel pipes and Stainless Steel from 2"-8" (DN50~DN200) SCH10 / SCH40.
- The lightweight and compact design of this product is a cost-effective solution that can help save investment on grooving tools.
- The integrated hydraulic feeding pump and groove depth lock nut ensure high quality grooves and high efficiency.
- Inbuilt high-performance gear reducing motor contributes compact size and low noise.

Specifications

Fabrication Capacity:	2"~4"(DN50~DN100,Φ60~Φ114) SCH10/40 Steel Pipe
	5"~8"(DN125~DN200,Φ139~Φ219) SCH10/20 Steel Pipe
Max Wall Thickness:	6mm
Output Speed:	30R.P.M
Gross Weight:	47kgs
Packing Size:	56*26*65cm

Drive Unit

Catalog No.	Phase	Power	Voltage	Frequency
900030	Single	800W	220V	50/60Hz
900031	Single	800W	110V	50/60Hz

Standard

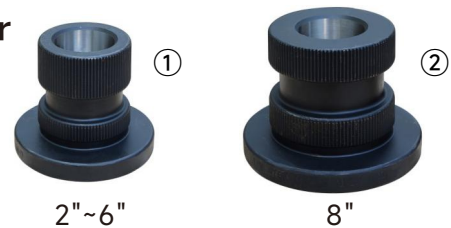
Catalog No.	Description	N.W (kg)	Ref No.
911074	Drive roller 2"~6" (Φ60~Φ168)	1.30	①
911075	Drive roller 8" (Φ219)	1.40	②
912018	Groove roller 2"~6" (Φ60~Φ168)	0.45	③
912032	Groove roller 8" (Φ219)	0.45	④
998028	Pipe Stand for 2"~8" (Φ60~Φ219)	2.20	⑤



Groove Roller



Drive Roller



2"~12"



RG-2X

Electric Hydraulic Roll Grooving Machine

Design Features

- Designed for versatility and performance, the RG-2X Roll Grooving Machine handles steel and stainless steel pipes ranging from 2" to 12" (DN50~DN300), SCH10 to SCH40.
- The interlocking structure between the groove roller and drive roller ensures precise control of the pipe sealing surface length.
- Unique split-type hydraulic system features an independent pump and cylinder structure. The fully enclosed pump design eliminates the need for a breather hole, reducing hydraulic oil replacement frequency and extending pump lifespan.

Specifications

Fabrication Capacity:	2"~12"(DN50~DN300,Φ60~Φ325) SCH10/40 Steel Pipe
Max Wall Thickness:	10mm
Output Speed:	23R.P.M
Gross Weight:	145kgs
Packing Size:	82*47*88cm

Drive Unit

Catalog No.	Phase	Power	Voltage	Frequency
900020	Single	1100W	220V	50/60Hz
900021	Single	1100W	110V	50/60Hz

Standard

Catalog No.	Description	N.W (kg)	Ref No.
911022	Drive roller 2"~3" (Φ60~Φ89)	1.30	①
911021	Drive roller 3½"~6" (Φ101~Φ168)	1.30	②
911020	Drive roller 8"-12" (Φ219~Φ325)	1.40	③
912010	Groove roller 2"~3" (Φ60~Φ89)	0.45	④
912009	Groove roller 3½"~6" (Φ101~Φ168)	0.45	⑤
912008	Groove roller 8"-12" (Φ219~Φ325)	0.45	⑥
998078	Pipe stand for 2"~12" (Φ60~Φ325)	6.90	⑦
998026	Foot Switch	1.50	⑧

Optional

Catalog No.	Description	N.W (kg)	Ref No.
912040	Groove roller for SCH10 Anti-flare(2"-3")	0.45	④
912039	Groove roller for SCH10 Anti-flare(3½"-6")	0.45	⑤
912038	Groove roller for SCH10 Anti-flare(8"-12")	0.45	⑥



Drive Roller



Groove Roller



1"~12"

RG-2S

Heavy-duty Electric Hydraulic Roll Grooving Machine



Built-in depth scale

Design Features

- Designed for versatility and performance, the RG-2S Roll Grooving Machine handles steel and stainless steel pipes ranging from 1" to 12" (DN25-DN300), SCH10 to SCH40.
- The interlocking structure between the groove roller and drive roller ensures precise control of the pipe sealing surface length.
- Unique split-type hydraulic system features an independent pump and cylinder structure. The fully enclosed pump design eliminates the need for a breather hole, reducing hydraulic oil replacement frequency and extending pump lifespan.

Specifications

Fabrication Capacity: 1"~12" (DN25-DN300, $\Phi 33 \sim \Phi 325$) SCH10/40 Steel Pipe

Max Wall Thickness: 10mm

Output Speed: 23RPM

Gross Weight: 135kgs

Packing Size: 82*47*88cm

Groove Roller



1"~1 1/2"

2"~3"

3 1/2"~6"

8"~12"

Drive Roller



1"~1 1/2"

2"~3"

3 1/2"~6"

8"~12"

Drive Unit

Catalog No.	Phase	Power	Voltage	Frequency
900022	Single	1100W	220V	50/60Hz
900023	Single	1100W	110V	50/60Hz

Standard

Catalog No.	Description	N.W (kg)	Ref No.
911172	Drive roller 1"~1 1/2" ($\Phi 33 \sim \Phi 48$)	1.13	①
911022	Drive roller 2"~3" ($\Phi 60 \sim \Phi 89$)	1.30	②
911021	Drive roller 3 1/2"~6" ($\Phi 101 \sim \Phi 168$)	1.30	③
911020	Drive roller 8"~12" ($\Phi 219 \sim \Phi 325$)	1.40	④
912066	Groove roller 1"~1 1/2" ($\Phi 33 \sim \Phi 48$)	0.45	⑤
912010	Groove roller 2"~3" ($\Phi 60 \sim \Phi 89$)	0.45	⑥
912009	Groove roller 3 1/2"~6" ($\Phi 101 \sim \Phi 168$)	0.45	⑦
912008	Groove roller 8"~12" ($\Phi 219 \sim \Phi 325$)	0.45	⑧
998078	Pipe stand for 1"~12" ($\Phi 33 \sim \Phi 325$)	6.90	⑨
998026	Foot Switch	1.50	⑩

1"~12"



RG-5X

Light Weight Roll Grooving Machine

Design Features

- Model RG-5X Electric Hydraulic Roll Grooving Machine is designed to roll grooves on steel pipes and stainless steel from 1"-12" (DN25~DN300) SCH10/SCH20, 1"-8" (DN25~DN200) SCH10/SCH40
- The RG-5X is highly versatile and suitable for a wide range of applications, including municipal piping and fire protection systems. It supports a broad size range, offers easy operation, simple maintenance, built for practical performance.
- The unique combination of the hydraulic feeding pump and the groove depth lock knob guarantees premium grooves and optimal efficiency. The frame is equipped with anti-collision guard rails for better protection.

Specifications

Fabrication Capacity:	1"~8" (DN25~DN200, $\Phi 33\sim\Phi 219$) SCH10/40 Steel Pipe
	10"~12" (DN250~DN300, $\Phi 254\sim\Phi 325$) SCH10/20 Steel Pipe
Max Wall Thickness:	8mm
Output Speed:	23R.P.M
Gross Weight:	118kgs
Packing Size:	75*40*70cm

Drive Unit

Catalog No.	Phase	Power	Voltage	Frequency
900050	Single	1100W	220V	50/60Hz
900051	Single	1100W	110V	50/60Hz

Standard

Catalog No.	Description	N.W (kg)	Ref No.
911106	Drive roller 1"-1½"	($\Phi 33\sim\Phi 48$)	1.15 ①
911007	Drive roller 2"-3"	($\Phi 60\sim\Phi 89$)	1.15 ②
911008	Drive roller 3½"-6"	($\Phi 101\sim\Phi 168$)	1.70 ③
911019	Drive roller 8"-12"	($\Phi 219\sim\Phi 325$)	1.70 ④
912041	Groove roller 1"-1½"	($\Phi 33\sim\Phi 48$)	0.90 ⑤
912042	Groove roller 2"-6"	($\Phi 60\sim\Phi 168$)	0.98 ⑥
912043	Groove roller 8"-12"	($\Phi 219\sim\Phi 325$)	0.90 ⑦
998078	Pipe stand for 1"-12"	($\Phi 33\sim\Phi 325$)	6.90 ⑧
998026	Foot Switch	1.50	⑨

Drive Roller



1"~1 ½"



2"~3"



3 ½"-6"



8"-12"

Groove Roller



1"~1 ½"



2"~6"



8"-12"

RG-5A

Versatile Roll Grooving Machine

1"~12"



Specifications

Fabrication Capacity:	1"~8"(DN25~DN200,Φ33~Φ219) SCH10/40 Steel Pipe
	10"~12"(DN250~DN300,Φ254~Φ325) SCH10/20 Steel Pipe
Max Wall Thickness:	8mm
Output Speed:	23R.P.M
Gross Weight:	172kgs
Packing Size:	143*68*133cm

Drive Unit

Catalog No.	Phase	Power	Voltage	Frequency
900052	Single	1100W	220V	50/60Hz
900053	Single	1100W	110V	50/60Hz

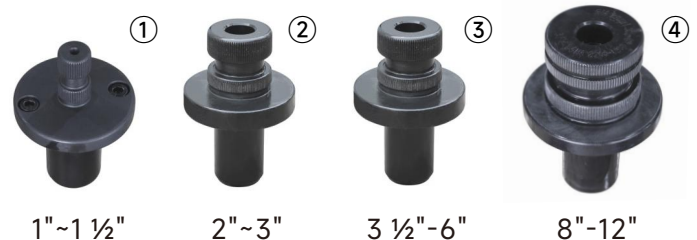
Standard

Catalog No.	Description	N.W (kg)	Ref No.
911106	Drive roller 1"-1½"	(Φ33~Φ48) 1.15	①
911007	Drive roller 2"-3"	(Φ60~Φ89) 1.15	②
911008	Drive roller 3½"-6"	(Φ101~Φ168) 1.70	③
911019	Drive roller 8"-12"	(Φ219~Φ325) 1.70	④
912041	Groove roller 1"-1½"	(Φ33~Φ48) 0.90	⑤
912042	Groove roller 2"-6"	(Φ60~Φ168) 0.80	⑥
912043	Groove roller 8"-12"	(Φ219~Φ325) 0.70	⑦
998078	Pipe stand for 1"~12"	(Φ33~Φ325) 6.90	⑧
998026	Foot Switch	1.50	⑨

Design Features

- Model RG-5A Roll Grooving Machine is designed to roll grooves on steel and stainless steel pipes from 1"-12", Equipped with a heavy-duty trolley with large mounting platform and an independent toolbox.
- The RG-5A is highly versatile and suitable for a wide range of applications, including municipal piping and fire protection systems. It supports a broad size range, offers easy operation, simple maintenance, built for practical performance.
- The unique combination of the hydraulic feeding pump and the groove depth lock knob guarantees premium grooves and optimal efficiency.

Drive Roller



Groove Roller



2"~16"



RG-6X

Heavy-duty Roll Grooving Machine for Large-size pipes

Design Features

- Model RG-6X Electric Hydraulic Roll Grooving Machine is designed to roll grooves on steel and stainless steel pipes from 2"-16" (DN50~DN400) SCH10 / SCH40.
- The compact large-size grooving machine boasts exceptional versatility and robust performance. Standard equipping heavy-duty adjustable pipe stand with ratchet structure.
- The interlocking structure of groove roller and drive roller ensures precise control of the pipe sealing surface length.
- Unique split-type hydraulic system features an independent pump and cylinder structure. The fully enclosed pump design eliminates the need for a breather hole, reducing hydraulic oil replacement frequency and extending pump lifespan.

Specifications

Fabrication Capacity:	2"~12" SCH10/40 Steel Pipe 14"~16" SCH10/20 Steel Pipe
Max Wall Thickness:	10mm
Output Speed:	23R.P.M
Gross Weight:	170kgs
Packing Size:	92*48*87cm

Drive Unit

Catalog No.	Phase	Power	Voltage	Frequency
900060	Single	1100W	220V	50/60Hz
900061	Single	1100W	110V	50/60Hz

Standard

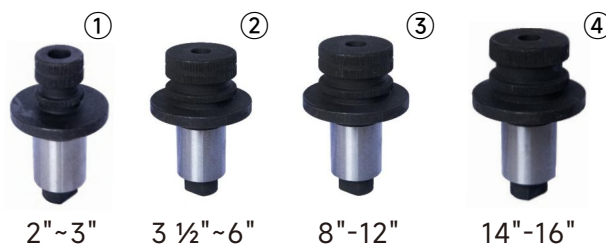
Catalog No.	Description	N.W (kg)	Ref No.
911022	Drive roller 2"~3" (Φ60~Φ89)	1.30	①
911021	Drive roller 3 1/2"~6" (Φ101~Φ168)	1.30	②
911020	Drive roller 8"~12" (Φ219~Φ325)	1.40	③
911143	Drive roller 14"~16" (Φ355~Φ426)	1.60	④
912010	Groove roller 2"~3" (Φ60~Φ89)	0.45	⑤
912009	Groove roller 3 1/2"~6" (Φ101~Φ168)	0.45	⑥
912008	Groove roller 8"~12" (Φ219~Φ325)	0.45	⑦
912052	Groove roller 14"~16" (Φ355~Φ426)	0.45	⑧
998026	Foot switch	1.50	⑨
998103	Pipe stand for 2"~16" (Φ60~Φ426)	33.0	⑩

Optional

Catalog No.	Description	N.W (kg)	Ref No.
912040*	Groove roller for SCH10 Anti-flare (2"~3")	0.45	⑤
912039*	Groove roller for SCH10 Anti-flare (3 1/2"~6")	0.45	⑥
912038*	Groove roller for SCH10 Anti-flare (8"~12")	0.45	⑦
912056*	Groove roller for SCH10 Anti-flare(14"~16")	0.45	⑧



Drive Roller



Groove Roller



8"~24"



RG-4X

Heavy-duty Roll Grooving Machine for Large-size pipes

Design Features

- Model RG-4X Roll Grooving Machine is designed to roll grooves on steel pipes and Stainless Steel from 8"-24" (DN200~DN600) SCH10 to SCH40. Ideal for use in both workshops and job sites for streamlined mass fabrication. Its exceptional strength and durability make it a reliable choice for heavy-duty applications.
- Unique split-type hydraulic system features an independent pump and cylinder structure. The fully enclosed pump design eliminates the need for a breather hole, reducing hydraulic oil replacement frequency and extending pump lifespan.
- The interlocking structure of groove roller and drive roller ensures precise control of the pipe sealing surface length.

Specifications

Fabrication Capacity:	8"~16" (DN200~DN400, Φ 219~ Φ 426) SCH10/40 Steel Pipe
	18"~24" (DN450~DN600, Φ 457~ Φ 630) SCH10/20 Steel Pipe
Max Wall Thickness:	13mm
Output Speed:	20R.P.M
Gross Weight:	285kgs
Packing Size:	110*75*99cm

* Note: Optional roller set is required for grooving 6"/DN150 pipe

Drive Unit

Catalog No.	Phase	Power	Voltage	Frequency
900040	3PH	2200W	380V	50/60Hz
900041	3PH	2200W	440V	50/60Hz

Standard

Catalog No.	Description	N.W (kg)	Ref No.
911087	Drive roller 8"~12" (Φ 219~ Φ 325)	3.5	①
911088	Drive roller 14"~16" (Φ 355~ Φ 426)	3.5	②
911089	Drive roller 18"~24" (Φ 457~ Φ 630)	3.5	③
912029	Groove roller 8"~12" (Φ 219~ Φ 325)	2.0	④
912030	Groove roller 14"~16" (Φ 355~ Φ 426)	2.0	⑤
912031	Groove roller 18"~24" (Φ 457~ Φ 630)	2.0	⑥
998038	Pipe stand for 8"~24" (Φ 219~ Φ 630)	33.0	⑦

Optional

Catalog No.	Description	N.W (kg)	Ref No.
911099*	AGS Groove roller 14"~24" (Φ 355~ Φ 630)	3.50	⑨
912034*	AGS Drive roller 14"~24" (Φ 355~ Φ 630)	2.00	⑩

Drive Roller



8"~12"



14"~16"

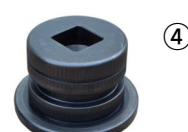


18"~24"

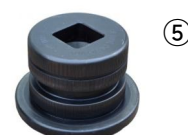


14"~24"

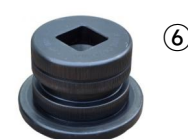
Groove Roller



8"~12"



14"~16"



18"~24"



14"~24"

8"~32"



RG-K32

Heavy-duty Roll Grooving Machine for Large-size pipes

Design Features

- Model RG-K32 Roll Grooving Machine is designed to roll groove on steel pipes and Stainless Steel from 8"-32" (DN200~DN800) SCH10 to SCH40. Ideal for use in both workshops and job sites for streamlined mass fabrication. Its exceptional strength and durability make it a reliable choice for heavy-duty applications.
- Unique split-type hydraulic system features an independent pump and cylinder structure. The fully enclosed pump design eliminates the need for a breather hole, reducing hydraulic oil replacement frequency and extending pump lifespan.
- The interlocking structure of groove roller and drive roller ensures precise control of the pipe sealing surface length.

Specifications

Fabrication Capacity:	8"~16" (DN200~DN400, Φ 219~ Φ 426) SCH10/40 Steel Pipe
	18"~32" (DN450~DN800, Φ 457~ Φ 813) SCH10/20 Steel Pipe
Max Wall Thickness:	13mm
Output Speed:	20R.P.M
Gross Weight:	430kgs
Packing Size:	125*115*165cm



Drive Unit

Catalog No.	Phase	Power	Voltage	Frequency
XXXX	3PH	2200W	380V	50/60Hz
XXXX	3PH	2200W	440V	50/60Hz

Standard

Catalog No.	Description	N.W (kg)	Ref No.
911087	Drive roller 8"~12" (Φ 219~ Φ 325)	3.5	①
911088	Drive roller 14"~16" (Φ 355~ Φ 426)	3.5	②
911089	Drive roller 18"~24" (Φ 457~ Φ 630)	3.5	③
911166	Drive roller 26"~32" (Φ 660~ Φ 810)	3.5	④
912029	Groove roller 8"~12" (Φ 219~ Φ 325)	2.0	⑤
912030	Groove roller 14"~16" (Φ 355~ Φ 426)	2.0	⑥
912031	Groove roller 18"~24" (Φ 457~ Φ 630)	2.0	⑦
912065	Groove roller 26"~32" (Φ 660~ Φ 810)	2.0	⑧
998038	Pipe stand for 8"~32" (Φ 219~ Φ 813)	35	⑨
998193	Pipe stabilizer	7.0	⑩

Drive Roller

Groove Roller



8"~12"



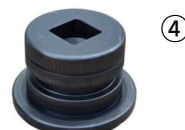
14"~16"



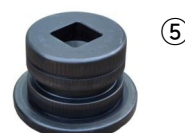
18"~24"



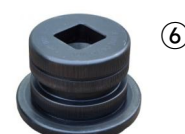
26"~32"



8"~12"



14"~16"



18"~24"



26"~32"

3/4"~8"



RG-2T

Inward and Outward Roll Grooving Machine

Design Features

- Model RG-2T Inward and Outward roll grooving machine is suitable to form inward and outward groove on 3/4"-8" aluminum pipes and stainless steel pipes, by changing the corresponding roller sets.
- Lightweight design with detachable handles, allowing easy one-person transport.
- Inbuilt high-performance gear reducing motor contributes compact size and low noise.
- The integrated hydraulic feeding pump with built-in depth adjustment screw and lock nut ensure high quality grooves and high efficiency.

Specifications

Fabrication Capacity:	DN20~DN200 (Outward groove) DN50~DN150 (Inward groove)
Max Wall Thickness:	Aluminum pipe (4mm) Stainless steel pipe (3mm)
Net Weight:	33kgs

Drive Unit

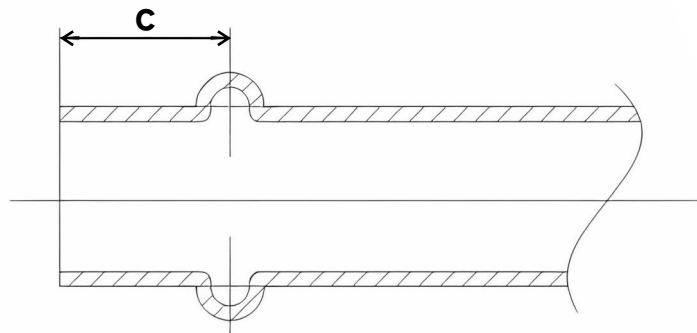
Catalog No.	Phase	Power	Voltage	Frequency
940920	1 Ph	700W	220V	50/60Hz
940921	3 Ph	700W	380V	50/60Hz

Gonvex Groove Size :

DN20: **C**=23mm

DN40~DN200: **C**=29mm

DN50~DN200: **C**=35mm



* "C" is the dimension from the center of the groove to the end of the pipe. It can be customized according to requirements.

2"~12"



AG-2X

Automatic Roll Grooving Machine

Design Features

- Built for heavy-duty grooving jobs, model AG-4X is ideal for high-volume grooving of large-diameter steel pipes in workshop and construction sites.
 - Equipped with a high-power motor and high-strength gearbox, the machine is built for long-term, continuous operation.
 - Simple push-button operations ensures easy and efficient grooving operation experience.
 - Heavy-duty groove rollers and drive rollers with interlocking structure ensures precise control of the pipe sealing surface length.
 - Unique depth limiting device, the groove roller automatically resets after the groove depth is reached.
- Note: the guide wheel can be optionally set to automatically move back and forth for added convenience and speed.

Specifications

Fabrication Capacity:	2"~12"(DN50~DN300,Φ60~Φ325)
	(Optional) 2"~16"(DN50~DN400,Φ60~Φ426)
Max Pipe Wall Thickness:	10mm
Output Speed:	23 R.P.M
Motor:	380V/ 750W 3Ph
Gross Weight:	820kgs
Packing Size:	125*100*150cm

Drive Unit

Catalog No.	Phase	Power	Voltage	Frequency
999003	3Ph	750W	380V	50/60Hz

Standard

Catalog No.	Description	N.W (kg)	Ref No.
911022	Drive roller 2"~3" (Φ60~Φ89)	1.30	①
911021	Drive roller 3½"~6" (Φ101~Φ168)	1.30	②
911020	Drive roller 8"-12" (Φ219~Φ325)	1.40	③
912010	Groove roller 2"~3" (Φ60~Φ89)	0.45	④
912009	Groove roller 3½"~6" (Φ101~Φ168)	0.45	⑤
912008	Groove roller 8"-12" (Φ219~Φ325)	0.45	⑥
998164	Pipe stand for 2"~12" (Φ60~Φ325)	12.0	⑦

Optional

Catalog No.	Description	N.W (kg)	Ref No.
911170	Drive roller 14"~16" (Φ355~Φ426)	1.60	①
912052	Drive roller 14"~16" (Φ355~Φ426)	1.60	②

Drive Roller



Groove Roller



8"~24"



AG-4X

Automatic Roll Grooving Machine

Design Features

- Built for heavy-duty grooving jobs, model AG-4X is ideal for high-volume grooving of large-diameter steel pipes in workshop and construction sites.
- Equipped with a high-power motor and high-strength gearbox, the machine is built for long-term, continuous operation.
- Simple push-button operations ensures easy and efficient grooving operation experience.
- Heavy-duty groove rollers and drive rollers with interlocking structure ensures precise control of the pipe sealing surface length.
- Unique depth limiting device, the groove roller automatically resets after the groove depth is reached.
Note: the guide wheel can be optionally set to automatically move back and forth for added convenience and speed.

Specifications

Fabrication Capacity:	8"~24"(DN200~DN600,Φ219~Φ630)
Max Pipe Wall Thickness:	13mm
Output Speed:	23R.P.M
Motor:	380V/ 2200W 3Ph
Gross Weight:	1240kgs
Packing Size:	195*110*120cm

Drive Unit

Catalog No.	Phase	Power	Voltage	Frequency
999020	3Ph	2200W	380V	50/60Hz

Standard

Catalog No.	Description	N.W (kg)	Ref No.
911087	Drive roller 8"~12" (Φ219~Φ325)	3.50	①
911088	Drive roller 14"~16" (Φ355~Φ426)	3.50	②
911089	Drive roller 18"~24" (Φ457~Φ630)	3.50	③
912029	Groove roller 8"~12" (Φ219~Φ325)	1.40	④
912030	Groove roller 14"~16" (Φ355~Φ426)	1.40	⑤
912031	Groove roller 18"~24" (Φ457~Φ630)	1.40	⑥
998038	Pipe stand for 8"~24" (Φ219~Φ630)	33.0	⑦

Optional

Catalog No.	Description	N.W (kg)	Ref No.
911099*	AGS Groove roller 14"~24" (Φ355~Φ630)	3.50	⑨
912034*	AGS Drive roller 14"~24" (Φ355~Φ630)	2.00	⑩

Drive Roller



Groove Roller



2"~12"

2"~24"

GF-2X GF-4X

Pipe Fitting Roll Grooving Machine

Design Features

- GF series pipe fitting roll grooving machines are capable of grooving a wide range of steel and stainless steel pipe fittings —such as equal and reducing tees, 90-degree and 45-degree elbows, with max size up to 24 inch
- Built-in spindle motor and hydraulic station, can automatically complete the grooving work. It is an ideal fabrication tool for pipe fitting manufacturers, at workshops and job sites
- With a patented grooving process and specially engineered grooving components, the machine can reliably control the sealing surface length to meet high-quality standards
- High-quality hydraulic seals and electrical parts from trusted brands guarantee reliable performance and long-lasting operation efficiency

Specifications

Fabrication Capacity:	2"~12"(Φ60~Φ325) GF-2X
	2"~24"(Φ60~Φ630) GF-4X
Max Pipe Wall Thickness:	10mm GF-2X
	13mm GF-4X
Output Speed:	23R.M.P
Motor:	2200W 3Ph
Gross Weight:	1050kgs GF-2X
	1150kgs GF-4X
Packing Size:	195*110*120cm GF-2X
	195*110*120cm GF-4X



Drive Unit

Catalog No.	Model	Power	Voltage	Frequency
999071	GF-2X	2200W	380V/3PH	50/60Hz
999073	GF-4X	2200W	380V/3PH	50/60Hz

Standard

Catalog No.	Description	N.W (kg)	Ref No.
911223	Drive roller 1½"	(Φ48)	1.5 ①
911189	Drive roller 2"-2½"	(Φ60~Φ73)	1.6 ①
911190	Drive roller 3"-3½"	(Φ89~Φ101)	2.1 ①
911191	Drive roller 4"-5"	(Φ114~Φ141)	1.2 ①
911192	Drive roller 6"	(Φ168)	3.1 ①
911193	Drive roller 8"-12"	(Φ219~Φ325)	3.5 ①
911116	Drive roller 14"-16"	(Φ356~Φ406)	4 ①
911117	Drive roller 18"-24"	(Φ457~Φ610)	2.1 ①
912083	Groove roller 2"-5"	(Φ60~Φ141)	15 ②
912084	Groove roller 6"	(Φ168)	13 ②
912085	Groove roller 8"-12"	(Φ219~Φ325)	15 ②
912045	Drive roller 14"-16"	(Φ356~Φ406)	15 ②
912046	Drive roller 18"-24"	(Φ457~Φ610)	15 ②
998026	Foot Switch	1.50	③



2"~12"
2"~24"

GM-2X GM-4X

Electric Hydraulic Groove End Reforming Machine

Design Features

- These machines are suitable for 2" ~ 24" steel pipe fitting ends flare shaping process. It can be used for Tee, elbow, reducer and other pipe fittings shaping, suitable for workshop and construction site use. Built-in hydraulic station can automatically complete the shaping work.
- All models equipped with branded hydraulic power units and electrical components to ensure stable and efficient long-term operation.
- One-step reforming without causing any damage to the pipe fitting surface.
Button control with standard foot switch, offering simple, convenient operation and enhanced safety.

Specifications

Fabrication Capacity:	2"~12"(Φ60~Φ325) GM-2X 2"~24"(Φ60~Φ630) GM-4X
Max Pipe Wall Thickness:	10mm
Motor:	2200W 3Ph GM-2X 2200W 3Ph GM-4X
Gross Weight:	760kgs GM-2X 1160kgs GM-4X
Packing Size:	170*95*115cm GM-2X 195*110*120cm GM-4X

Drive Unit

Catalog No.	Model	Power	Voltage	Frequency
999061	GM-2X	2200W	380V/3PH	50/60Hz
999077	GM-4X	2200W	380V/3PH	50/60Hz

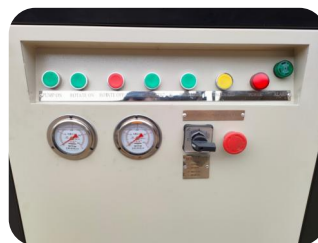
*Support voltage customization

Standard

Catalog No.	Description	For Model	N.W (kg)
998131	Reforming dies	Φ60.3 GM-2X / 4X	0.25
998132	Reforming dies	Φ73 GM-2X / 4X	0.35
998133	Reforming dies	Φ88.9 GM-2X / 4X	0.50
998134	Reforming dies	Φ114.3 GM-2X / 4X	0.60
998135	Reforming dies	Φ141.3 GM-2X / 4X	0.70
998136	Reforming dies	Φ168.3 GM-2X / 4X	0.80
998137	Reforming dies	Φ216.3 GM-2X / 4X	1.00
998138	Reforming dies	Φ219.1 GM-2X / 4X	1.20
998139	Reforming dies	Φ267.4 GM-2X / 4X	1.50
998140	Reforming dies	Φ273 GM-2X / 4X	1.60
998141	Reforming dies	Φ318.5 GM-2X / 4X	1.80
998142	Reforming dies	Φ323.9 GM-2X / 4X	2.00
998176	Reforming dies	Φ355 GM-4X	
998177	Reforming dies	Φ381 GM-4X	
998178	Reforming dies	Φ406 GM-4X	
998179	Reforming dies	Φ457 GM-4X	
998180	Reforming dies	Φ508 GM-4X	
998181	Reforming dies	Φ559 GM-4X	
998182	Reforming dies	Φ610 GM-4X	
998026	Foot Switch		1.50



Reforming dies



1"~12"



1"~6"



8"~12"

RG-1M

Combination Roll Groover
Patented Designe 1"-12"

Design Features

- Can be used manually or with a power drive. Ideal for on-site or flexible grooving tasks
- Featuring a patented design, the RG-1M is a versatile roll grooving tool that supports both manual operation and power drive through a threading machine. Suitable for both batch production and flexible on-site operations.
- Heavy-duty design for fire-fighting pipelines size range 1"~12" (DN25~DN300), SCH10 to SCH40.
- Three-stage gear reduction for smooth, labor-saving operation
- Compact design with a portable toolbox, allowing easy manual operation even in confined spaces

Specifications

Fabrication Capacity:	1"~8"(DN25~DN200,Φ33~Φ219) SCH10/40 Steel Pipe
	10"~12"(DN250~DN300,Φ254~Φ325) SCH10/20 Steel Pipe
Max Wall Thickness:	8mm
Operation radius:	210mm / 8 1/4"
Gross Weight:	25kgs
Packing Size:	50*22*53cm

Drive Unit

Catalog No.	Description	N.W (kg)	Size(cm)
900000	1" - 12" roll grooving assembly	17.7	50*22*53

Standard

Catalog No.	Description	N.W (kg)	Ref No.
911011	Drive roller 1" (Φ33)	0.70	①
911010	Drive roller 1 1/4"~1 1/2" (Φ42~Φ48)	0.70	②
911009	Drive roller 2"~6" (Φ60~Φ168)	0.70	③
911008	Drive roller 8"~12" (Φ219~Φ325)	0.70	④
912016	Groove roller 1"~6" (Φ33~Φ168)	0.30	⑤
912005	Groove roller 8"~12" (Φ219~Φ325)	0.30	⑥
998036	Ratchet with socket	1.50	⑦
911016	Support arms (×2) for 300	1.40	⑧
911015	Drive bar adaptor	2.50	⑨
998034	HDPE tool case	2.70	⑩

Optional

Catalog No.	Description	N.W (kg)	Ref No.
998114	Bracket set for horizontal threading machine	1.00	(11)

Drive Roller & Groove Roller



1"~6"



RG-2M

Combination Roll Groover
Patented Designe 1"-6"

Design Features

- Can be used manually or with a power drive. Ideal for on-site or flexible grooving tasks
- Featuring a patented design, the RG-2M is a versatile roll grooving tool that supports both manual operation and power drive through a threading machine. Suitable for both batch production and flexible on-site operations.
- Light-duty design for fire-fighting pipelines size range 1"~6" (DN25~DN150), SCH10 to SCH40.
- Three-stage gear reduction for smooth, labor-saving operation
- Compact design with a portable toolbox, allowing easy manual operation even in confined spaces

Specifications

Fabrication Capacity:	1"~4" (DN25~DN100, Φ33~Φ114) SCH10/40 Steel Pipe 5"~6" (DN125~DN150, Φ139~Φ168) SCH10/20 Steel Pipe
Max Wall Thickness:	6mm
Operation radius:	210mm / 8 1/4"
Gross Weight:	15kgs
Packing Size:	50*22*53cm

Drive Unit

Catalog No.	Description	N.W (kg)	Size(cm)
900001	1"-6" roll grooving assembly	12.5	50*22*53

Standard

Catalog No.	Description	N.W (kg)	Ref No.
911010	Drive roller 1 1/4"~1 1/2" (Φ42~Φ48)	0.7	①
911009	Drive roller 2"~6" (Φ60~Φ168)	0.7	①
912016	Groove roller 1"~6" (Φ33~Φ168)	0.3	②
998036	Ratchet with socket	1.65	③

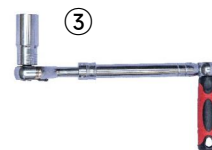
Optional

Catalog No.	Description	N.W (kg)	Ref No.
911011	Drive roller 1" (Φ33)	0.7	①
911016	Support arms (2pcs) for 300 power drive	1.4	④
911015	Drive bar adaptor	1.6	⑤
998114	Bracket set for horizontal threading machine	1.0	⑥
998034	HDPE tool case	2.7	⑦

Drive Roller



Groove Roller



1 1/4"~6"



⑦

Drive Unit

Catalog No.	Description	N.W (kg)	Size(cm)
900001	1 1/4"-6" roll grooving assembly	12	49*22*40

Standard

Catalog No.	Description	N.W (kg)	Ref No.
911010	Drive roller 1 1/4"~6" (Φ42~Φ168)	0.70	①
912016	Groove roller 1"~6" (Φ33~Φ168)	0.30	②
998036	Ratchet with socket	1.65	③

Optional

Catalog No.	Description	N.W (kg)	Ref No.
911016	Support arms (2pcs) for 300	1.40	④
911015	Drive bar adaptor	1.6	⑤
998114	Bracket set for horizontal threading machine	1.00	⑥
998034	HDPE tool case	2.70	⑦

RG-3M

Combination Roll Groover
Compact Designe 1 1/4"-6"

Design Features

- Can be used manually or with a power drive. Ideal for on-site or flexible grooving tasks
- Featuring a compact design, the RG-3M is a versatile roll grooving tool that supports both manual operation and power drive through a threading machine. Suitable for both batch production and flexible on-site operations.
- Light-duty design for fire-fighting pipelines size range 1 1/4"~6" (DN32~DN150),SCH10 to SCH40.
- Two-stage gear reduction for smooth, labor-saving operation
- Compact design with a portable toolbox, allowing easy manual operation even in confined spaces

Specifications

Fabrication Capacity:	1 1/4"~4" (DN32~DN100, Φ33~Φ114) SCH10/40 Steel Pipe 5"~6" (DN125~DN150, Φ139~Φ168) SCH10/20 Steel Pipe
Max Wall Thickness:	6mm
Operation radius:	210mm / 8 1/4"
Gross Weight:	12kgs
Packing Size:	49*22*40cm

Drive Roller

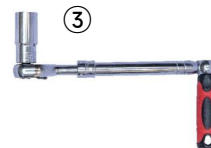


1 1/4" ~ 6"

Groove Roller



1"~6"



⑤



④



⑥



2"~8"



RG-H1X

Manual Hydraulic Roll Grooving Attachment

Design Features

- The RG-H1X standard-duty roll grooving attachment is designed to work with 300 power drive and threading machines, offering a flexible grooving solution, suitable for 2" to 8" steel pipes.
- Supplied with a standard mounting steel plate, which can be customized to fit threading machines from different brands —offering flexible installation options.
- The integrated hydraulic feeding pump and groove depth lock nut ensure high quality grooves and high efficiency.

Specifications

Fabrication Capacity:	2"~4"(DN50~DN100,Φ60~Φ114) SCH10/SCH40 steel pipe
	5"~8"(DN125~DN200,Φ139~Φ219) SCH10/SCH20 steel pipe
Max Wall Thickness:	6mm
Gross Weight:	29kgs
Packing Size:	38*42*47cm

Drive Unit

Catalog No.	Description	N.W (kg)	Size(cm)
900002	2"-8" hydraulic roll grooving assembly	18	38*42*47

Standard

Catalog No.	Description	N.W (kg)	Ref No.
911074	Drive roller 2"~6" (Φ60~Φ168)	1.30	①
911075	Drive roller 8" (Φ219)	1.30	②
912018	Groove roller 2"~6" (Φ60~Φ168)	0.45	③
912032	Groove roller 8" (Φ219)	0.45	④
911018	Drive bar adapter	2.30	⑤

Drive Roller



Groove Roller



*Adapter plate to fit on the threading machines

*Customization is available



*Working with traditional threading machine

2"~12"



RG-H2X

Manual Hydraulic Roll Grooving Attachment

Design Features

- The RG-H2X heavy-duty roll grooving attachment is designed to work with 300 power drives, offering a flexible grooving solution, suitable for 2" to 12" steel pipes, SCH40 standard.
- The interlocking structure between the groove roller and drive roller ensures precise control of the pipe sealing surface length.
- Unique split-type hydraulic system features an independent pump and cylinder structure. The fully enclosed pump design eliminates the need for a breather hole, reducing hydraulic oil replacement frequency and extending pump lifespan.

Specifications

Fabrication Capacity:	2"~12"(DN50~DN300,Φ60~Φ325) SCH10/40 Steel Pipe
Max Wall Thickness:	10mm
Gross Weight:	75kgs
Packing Size:	45*20*65cm

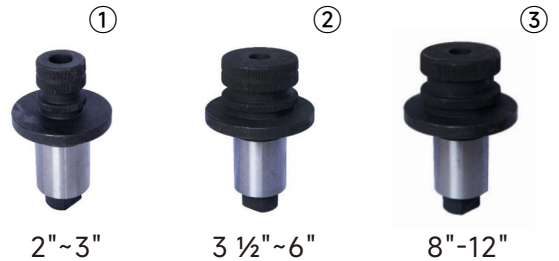
Drive Unit

Catalog No.	Description	N.W (kg)	Size(cm)
900003	2"-12" roll grooving attachment	75	45*20*65

Standard

Catalog No.	Description	N.W (kg)	Ref No.
911022	Drive roller 2"~3" (Φ60~Φ89)	1.30	①
911021	Drive roller 3½"~6" (Φ101~Φ168)	1.30	②
911020	Drive roller 8"~12" (Φ219~Φ325)	1.40	③
912010	Groove roller 2"~3" (Φ60~Φ89)	0.45	④
912009	Groove roller 3½"~6" (Φ101~Φ168)	0.45	⑤
912008	Groove roller 8"~12" (Φ219~Φ325)	0.45	⑥
911018	Drive bar adapter	2.30	⑦
913006	Support Bench	2.20	⑧

Drive Roller



Groove Roller



2"~12"
8"~32"

CG-2X CG-4X

Electric Hydraulic Groove Cutting Machine

Design Features

- Designed specifically for cutting grooves into heavy-walled pipes without flaring, pipe size range of 2"-32", where conventional roll grooving is not applicable. Suitable for applications as in mining pipelines, power plants, petrochemical facilities, and heavy-duty mechanical systems.
- Robust structure suitable for both on-site and workshop use, ensuring reliable performance under demanding conditions. The efficient and reliable hydraulic system ensures long-term operation under harsh working conditions.
- Equipped with a range of specially designed HSS cutting tools for efficient grooves cutting and extended service life. Comes standard with heavy-duty ratchet and hydraulic pipe stands, respectively matched to CG-2X and CG-4X machines for easy handling of large and heavy pipes.

Specifications

CG-2X

Fabrication Capacity:	2"~12"(DN50~DN300,Φ60~Φ325)
Pipe Wall Thickness:	6-35mm
Output Speed:	23 R.P.M
Motor:	1100W 1Ph / 750W 3Ph
Gross Weight:	340kgs
Packing Size:	120*90*140cm

CG-4X

Fabrication Capacity:	8"~32"(DN200~DN800,Φ219~Φ813)
Pipe Wall Thickness:	6-35mm
Output Speed:	19 R.P.M
Motor:	2200W 3Ph
Gross Weight:	450 kgs
Packing Size:	120*110*175cm

Drive Unit

Catalog No.	Phase	Power	Voltage	Frequency
998003/998012	1Ph / 3Ph	1100/750W	220/380V	50/60Hz
998042	3Ph	2200W	380V	50/60Hz

Standard

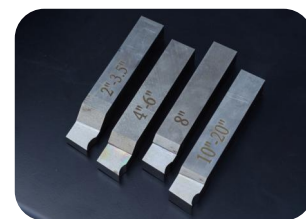
Catalog No.	Description	N.W (kg)	Ref No.
922203	Drive roll 2"~3" (Φ60~Φ89)	5	①
911204	Drive roll 3 1/2"~12" (Φ101~Φ324)	6.7	①
911208	Drive roll 8"~32" (Φ219~Φ813)	13.2	①
998149	Cutting tool 2"~3 1/2" (Φ60~Φ101)	0.2	②
998150	Cutting tool 4"~6" (Φ114~Φ168)	0.2	②
998154	Cutting tool 8" (Φ219)	0.2	②
998151	Cutting tool 10"~20" (Φ273~Φ508)	0.2	②
998152	Cutting tool 22"~32" (Φ558~Φ813)	0.2	②
998153	Foot Switch (only for GC-2X)	1.50	

Drive Roll



2"-3" for CG-2X
3 1/2"-12" for CG-2X
8"-32" for CG-4X

Cutting tools



2"-3 1/2" for CG2
4"-6" for CG2
8" for CG-2X & CG-4X
10"-20" for CG-2X & CG-4X
22"-32" for CG4



Groove Meter (π ruler / tape)

Design Features

- The ideal tool for quick and reliable groove inspection, supports brand customization
- Durable aluminum alloy housing with stainless steel measuring tape. Black steel tape with high-contrast laser markings for easy reading and long-time usage without wear
- Dual-scale design on the reverse side for direct reading of pipe O.D. and flare width — no need to divide by π
- Measurement range: 1"-24" / DN25-DN600 / \varnothing 33- \varnothing 610



Front - groove bottom diameter tolerance



Back - O.D.direct reading

Groove Depth Gauge

Design Features

- The Gruvmaster Groove Gauge is designed to preset the groove depth working together with the stop nut on the machine
- Crafted from stainless steel, the four-piece gauge set is strung on a leather braid for convenient carrying. Clearly marked sizes for easy identification
- Customized logo available upon request—ideal for market promotional use
- Measurement range: 1"-24" / DN25-DN600 / \varnothing 33- \varnothing 610
Gauge sizes in the set can be configured based on actual requirements



2"~8"



CM-8

Electric Hydraulic Pipe Cutting Machine

Design Features

- The CM-8 is a cold cutting solution for steel, stainless steel pipes, powered by high performance low-noise gear reduction motor in compact size, with cutting blade actuated by the hydraulic system.
- No ignition, microchip or rough edges during cutting operation. Ideal for use in workshops, job sites.
- Unique split-type hydraulic system features an independent pump and cylinder structure. The fully enclosed pump design eliminates the need for a breather hole, reducing hydraulic oil replacement frequency and extending pump lifespan. The hydraulic system supports fast feed-in, significantly improving work efficiency

Specifications

Fabrication Capacity:	2"~8"(DN50~DN200,Φ60~Φ219) Steel Pipe
Max Wall Thickness:	8mm
Output Speed:	30R.P.M
Gross Weight:	84kgs
Packing Size:	67*47*75cm

Drive Unit

Catalog No.	Phase	Power	Voltage	Frequency
900070	Single	700W	220V	50/60Hz
900071	Single	700W	110V	50/60Hz

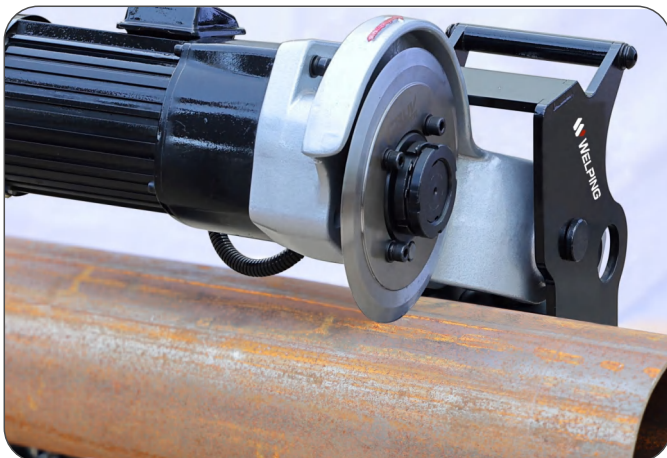
Standard

Catalog No.	Description	N.W (kg)	Ref No.
998030	Pipe stand for 2"~8" (Φ60~Φ219)	4	①
912019	Cutting blade (standard)	1.25	②
912058	Cutting blade (heavy-duty)	1.3	②

①



②



1/2" ~ 8"

CM-8X

Electric Hydraulic Pipe Cutting Machine

Design Features

- The CM-8X is a cold cutting solution for steel, stainless steel pipes, powered by high performance low-noise gear reduction motor in compact size, with cutting blade actuated by the hydraulic system.
- No ignition, microchip or rough edges during cutting operation. Ideal for use in workshops, job sites.
- Unique split-type hydraulic system features an independent pump and cylinder structure. The fully enclosed pump design eliminates the need for a breather hole, reducing hydraulic oil replacement frequency and extending pump lifespan. The hydraulic system supports fast feed-in, significantly improving work efficiency
- Built-in roller support for small pipes, supports pipe cutting down to 1/2". Supports customization to Min. pipe size 15mm

Specifications

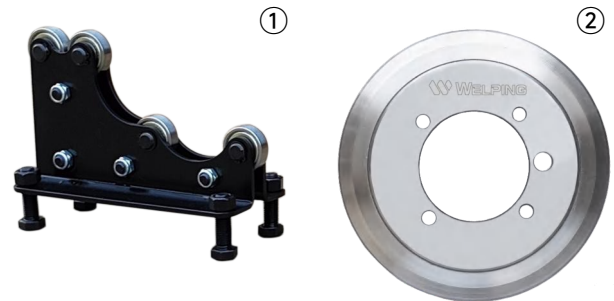
Fabrication Capacity:	1/2"~8"(DN15~DN200,Φ20~Φ219) Steel Pipe
Max Wall Thickness:	6mm
Output Speed:	30RPM
Gross Weight:	68kgs
Packing Size:	65*45*70cm

Drive Unit

Catalog No.	Phase	Power	Voltage	Frequency
900072	Single	700W	220V	50/60Hz
900073	Single	700W	110V	50/60Hz

Standard

Catalog No.	Description	N.W (kg)	Ref No.
998033	Pipe stand for 1/2"~8" (Φ20~Φ219)	6	①
912019	Cutting blade (standard)	1.25	②
912058	Cutting blade (heavy-duty)	1.3	②



2"~12"

CM-12

Electric Hydraulic Pipe Cutting Machine

Design Features

- The CM-12 is a cold cutting solution for steel, stainless steel pipes, powered by high performance low-noise gear reduction motor in compact size, with cutting blade actuated by the hydraulic system.
- No ignition, microchip or rough edges during cutting operation. Ideal for use in workshops, job sites.
- Unique split-type hydraulic system features an independent pump and cylinder structure. The fully enclosed pump design eliminates the need for a breather hole, reducing hydraulic oil replacement frequency and extending pump lifespan. The hydraulic system supports fast feed-in, significantly improving work efficiency

Specifications

Fabrication Capacity:	2"~12"(DN50~DN300, $\Phi 60 \sim \Phi 325$) Steel Pipe
Max Wall Thickness:	10mm
Output Speed:	23RPM
Gross Weight:	120kgs
Packing Size:	67*60*100cm

Drive Unit

Catalog No.	Phase	Power	Voltage	Frequency
900080	Single	1100W	220V	50/60Hz
900081	Single	1100W	110V	50/60Hz

Standard

Catalog No.	Description	N.W (kg)	Ref No.
998041	Pipe stand for 2"~12" ($\Phi 60 \sim \Phi 325$)	4.0	①
912019	Cutting blade (standard)	1.25	②
912058	Cutting blade (heavy-duty)	1.3	②



8"~20"

CM-20

Electric Hydraulic Pipe Cutting Machine

Design Features

- The CM-20 is a cold cutting solution for large-size steel, stainless steel pipes, powered by high performance low-noise gear reduction motor in compact size, with cutting blade actuated by the hydraulic system.
- No ignition, microchip or rough edges during cutting operation. Ideal for use in workshops, job sites.
- Unique split-type hydraulic system features an independent pump and cylinder structure. The fully enclosed pump design eliminates the need for a breather hole, reducing hydraulic oil replacement frequency and extending pump lifespan. The hydraulic system supports fast feed-in, significantly improving work efficiency
- Built-in roller supports for pipe sizes of 8"-14" and 14"-20"
Built-in transportation wheels with pull handle

Specifications

Fabrication Capacity:	8"~20" (DN200~DN500, $\Phi 219\sim\Phi 530$) Steel Pipe
Max Wall Thickness:	12mm
Output Speed:	23RPM
Gross Weight:	200kgs
Packing Size:	92*80*110cm

Drive Unit

Catalog No.	Phase	Power	Voltage	Frequency
900090	Single	1100W	220V	50/60Hz
900091	Single	1100W	110V	50/60Hz

Standard

Catalog No.	Description	N.W (kg)	Ref No.
998102	Pipe stand for 8"~20" ($\Phi 219\sim\Phi 530$)	45	①
912019	Cutting blade (standard)	1.25	②
912058	Cutting blade (heavy-duty)	1.3	②





VH-4S, 6S, 8S

Hinged Pipe Cutter

Design Features

- The hinged Pipe Cutter, innovative design, requires just 4 inches (102 mm) of clearance around the pipe.
- With an efficient handle swing of only 90° to 110°, it provides smooth operation in tight spaces.
- The hinge design allows the 4-wheel cutter to open and easily position around the pipe.
- Versatile and reliable, it works effectively anywhere—whether in ditches, underwater, overhead, or in pipe racks.
- VH6S and VH8S can come with a torque extension bar (optional), enabling two-person operation.

Pipe Cutters Selection Chart

Catalog No.	Model No.	Pipe capacity		Cutter wheel	Application	Length		Weight	
		in-nom.	OD (mm)			inch	mm	lbs	kg
810020	VH4S	2"-4"	60-125	S4	Sch40 steel and stainless	22	559	14.3	6.5
810030	VH6S	4"-6"	114-182	S6	Sch40 steel and stainless	28	711	22.7	10.3
810040	VH8S	6"-8"	168-240	S8	Sch40 steel and stainless	32	813	31.1	14.1
	VH6SH	4"-6"	114-182	S6	Sch40 steel and stainless			24.9	11.3
	VH8SH	6"-8"	168-240	S8	Sch40 steel and stainless			33.3	15.1



114mm



HC-1X

Pipe Hole Cutting Machine

Design Features

- The Model HC-1X Pipe Hole Cutter is designed to cut holes up to 4" into steel pipe.
- The HC-1X has a 5/8" capacity drill chuck to accommodate all sizes of hole saws and hole saw arbors. An integral motor and gear reduction optimizes performance of large diameter hole saws.
- The two feed handles allows the operator to use the Pipe Hole Cutter from either the left or right side. A rotating leveling vial in the base allows repeated holes to line up.
- Only 11" high, the compact design, allows the HC-1X to be used in tight quarters or above in- stalled pipe close to ceilings.

Specifications

Cutting Capacity:	up to 4"(114mm)
Pipe Mounting Capacity:	1 1/4" - 8" (32mm-200 mm)
Drill Chuck Capacity:	1/16" - 5/8" (2mm-16 mm)
Drill Chuck Speed:	240RPM
Current Draw Rating:	8 Amps @ 220-240V 15 Amps @ 120V
Height:	10.63" (27 cm)
Length:	12.59" (32 cm)
Width:	11.02" (28 cm)
Weight:	28 lbs. (12.8 Kg)

Drive Unit

Catalog No.	Phase	Power	Voltage	Frequency
910010	Single	1800W	220V	50/60Hz
910011	Single	1800W	110V	50/60Hz



114mm



HC-2X

Pipe Hole Cutting Machine

Design Features

- The Model HC-2X Pipe Hole Cutter is designed to cut holes up to 4" into steel pipe.
- The HC-2X has a 5/8" capacity drill chuck to accommodate all sizes of hole saws and hole saw arbors.
- Equipped with a high-performance low-noise gear reduction motor to offer high torque.
- The two feed handles allows the operator to use the Pipe Hole Cutter from either the left or right side. A rotating leveling vial in the base allows repeated holes to line up.

Specifications

Cutting Capacity:	up to 4"(114mm)
Pipe Mounting Capacity:	1 1/4" - 8" (32mm-200 mm)
Drill Chuck Capacity:	1/16" - 5/8" (2mm-16 mm)
Drill Chuck Speed:	110RPM
Current Draw Rating:	8 Amps @ 220-240V 15 Amps @ 120V
Packing Size:	32*32*63CM
Weight:	46 lbs. (21 Kg)

Drive Unit

Catalog No.	Phase	Power	Voltage	Frequency
910020	Single	700W	220V	50/60Hz
910021	Single	700W	110V	50/60Hz



HS Series Hole Saw

Design Features

- A specialized tool designed for cutting precise, round holes in a variety of materials.
- Come in various sizes from 14mm to 152mm, making them suitable for cutting holes in wood, metal, plastic, drywall.
- The motor's built-in high-performance gear reduction system enables a smaller form factor and quieter operation.
- Made from high-speed steel (HSS), BI-metal, hole saws offer durability and long-lasting performance.

Ordering Info. for Hole Saws

Model	Dia.	Material	Model	Dia.	Material
HS-14	14mm	M42/M3	HS-59	59mm	M42/M3
HS-16	16mm	M42/M3	HS-60	60mm	M42/M3
HS-17	17mm	M42/M3	HS-65	65mm	M42/M3
HS-19	19mm	M42/M3	HS-67	67mm	M42/M3
HS-20	20mm	M42/M3	HS-68	68mm	M42/M3
HS-21	21mm	M42/M3	HS-70	70mm	M42/M3
HS-22	22mm	M42/M3	HS-73	73mm	M42/M3
HS-24	24mm	M42/M3	HS-76	76mm	M42/M3
HS-25	25mm	M42/M3	HS-79	79mm	M42/M3
HS-27	27mm	M42/M3	HS-83	83mm	M42/M3
HS-29	29mm	M42/M3	HS-86	86mm	M42/M3
HS-30	30mm	M42/M3	HS-89	89mm	M42/M3
HS-32	32mm	M42/M3	HS-92	92mm	M42/M3
HS-33	33mm	M42/M3	HS-95	95mm	M42/M3
HS-35	35mm	M42/M3	HS-98	98mm	M42/M3
HS-37	37mm	M42/M3	HS-102	102mm	M42/M3
HS-38	38mm	M42/M3	HS-105	105mm	M42/M3
HS-40	40mm	M42/M3	HS-108	108mm	M42/M3
HS-41	41mm	M42/M3	HS-111	111mm	M42/M3
HS-43	43mm	M42/M3	HS-114	114mm	M42/M3
HS-44	44mm	M42/M3	HS-121	121mm	M42/M3
HS-46	46mm	M42/M3	HS-127	127mm	M42/M3
HS-48	48mm	M42/M3	HS-133	133mm	M42/M3
HS-51	51mm	M42/M3	HS-140	140mm	M42/M3
HS-54	54mm	M42/M3	HS-146	146mm	M42/M3
HS-57	57mm	M42/M3	HS-152	152mm	M42/M3

Hole saws arbors

Ordering Info. for Arbors

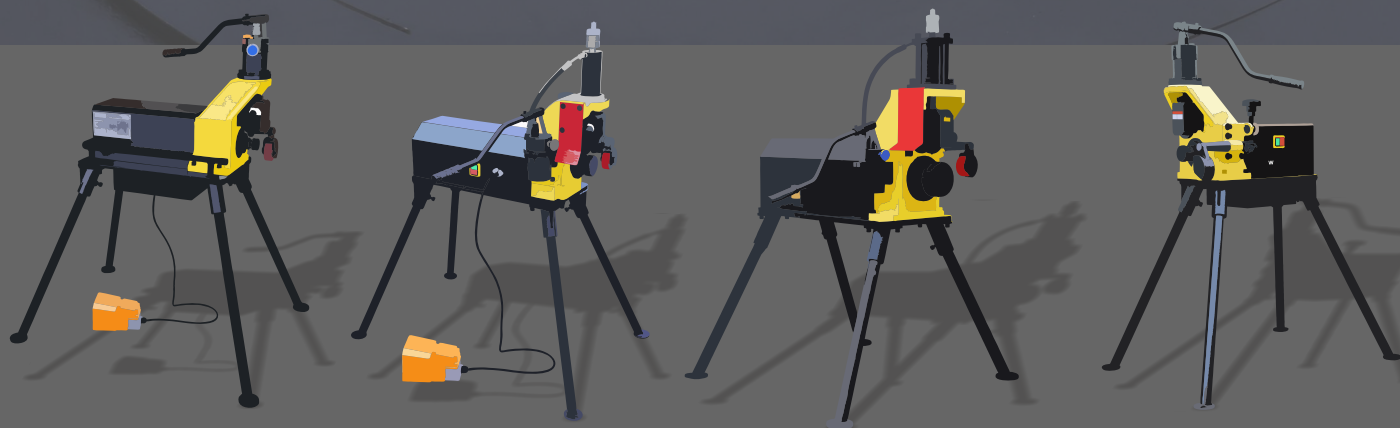
Model	Dia.	Material	Material
HSA-S	For 14-30mm	HSS 4341	HSS 4242
HSA-L	For 32-152mm	HSS 4341	HSS 4242

Note 1: Cutting length of the hole saws
55.5mm for hole saw from 14mm to 19mm;
49.5mm for 20mm to 35mm hole saws;
43.5mm for 37mm to 152mm hole saws

Note 2: Cutting depth can be customized as per requirements



Your One-stop Partner for Pipe Grooving Solutions



 **WELPING**®

GRUV®
MASTER

Hangzhou Welping Machinery Equipment Co., Ltd

Phone: 00 86 571 89332538

E-mail: top@welping.cn

Web: welpingtool.com www.gruvmastertools.com

Office address: Room B301, Chamber of Commerce Building, 185 Jincheng Road,
Xiaoshan District, Hangzhou, China

Factory address: No. 288 Jinyuan Road, Puyang Town, Xiaoshan District,
Hangzhou, China