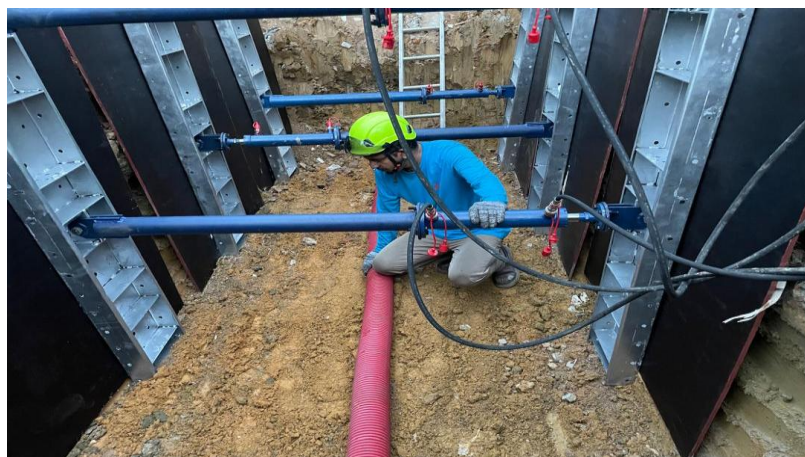
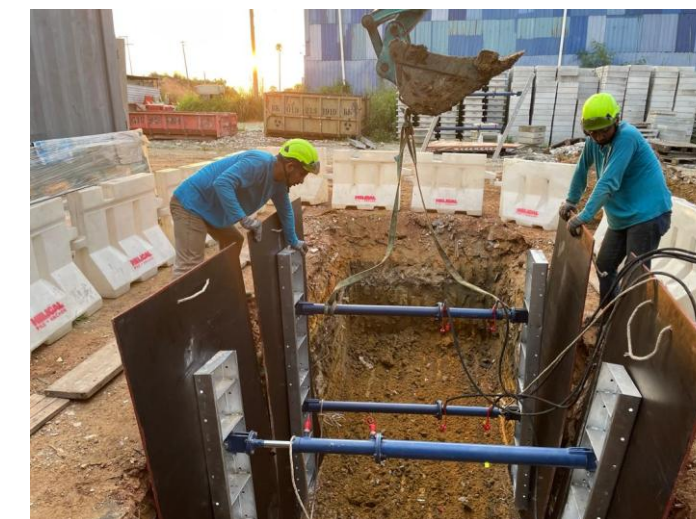


# XpressJack

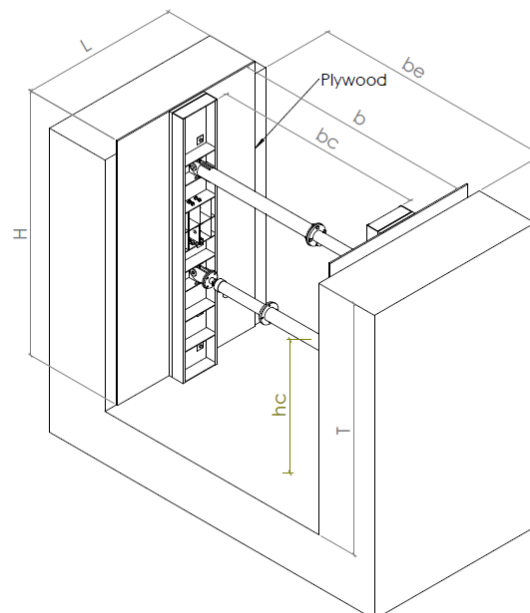


The XpressJack series is specifically intended for shoring depths of up to 2.0 m. This system is preferred for laying and repairing house service connection as well as gas, electric cable, sewerage and water pipes.



## Trench Depth & Height

H - Panel height (m)	T-max Trench depth (m)	hc - panel height clearance (m)
2.0	2.0	0.70
2.0	2.0	1.0



## Plywood Thickness 18mm

Plywood		Allowed earth Pressure (kN / m <sup>2</sup> )	Plywood quantity
Width (m)	Height (m)		
1.2	2.0	33	1
1.2	2.0	41	2 *soft soil



## Trench Width

Strut length	Width(mm)			Jack Compressive Force kN
	Trench b	Excavation be	Trench Clearance bc	
988	1200 - 1400	1250 - 1450	1050 - 1250	50
1288	1500 - 1700	1550 - 1750	1350 - 1550	50
1688	1900 - 2100	1950 - 2150	1750 - 1950	50



- ACCESSORIES**
- Hydraulic hand pump
  - Hydraulic hose
  - Control valve block
  - Release tool & hook
  - Hydraulic strut
  - Panel
  - Plywood
  - Timber plank