

# U High-Capacity

High-Capacity Submersible Dewatering Pumps

SERIES



U-43010B

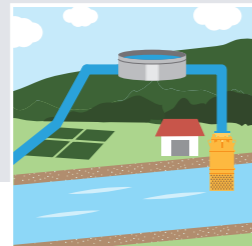
- High-torque 4-pole or 6-pole motors are applied in the pumps.
- The pumps perform the best for high capacity pumping applications with high efficiency.
- The top discharge and the cylindrical water channel provides efficient motor cooling.
- The back pressure releasing mechanism is adopted to enable a long service life of the mechanical seal (ONLY for U-4158A, U-4208 and U-47510D).
- Infiltrative water detector is adopted as a motor protector to prevent motor burnout (ONLY for U-65010B and U-47510D).  
\*For more information, refer to page 9.
- Sacrificial anode is equipped as standard. It protects the pumps from corrosion.
- The pumps are designed for easy maintenance and inspection.  
\*For more information, refer to page 11.

## Applications

- Drainage out of sumps / pits / quarries / mining / underground construction sites etc...
- Water intake and supply in fish farm



Stormwater drainage and flood control for roads and underpasses during heavy rain



Water intake and supply for irrigation

## Option



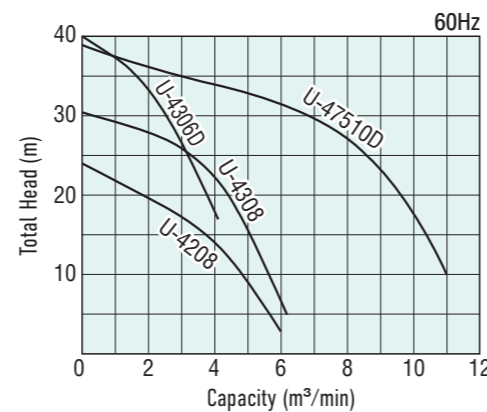
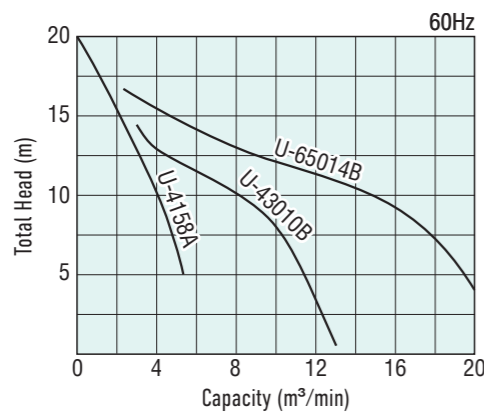
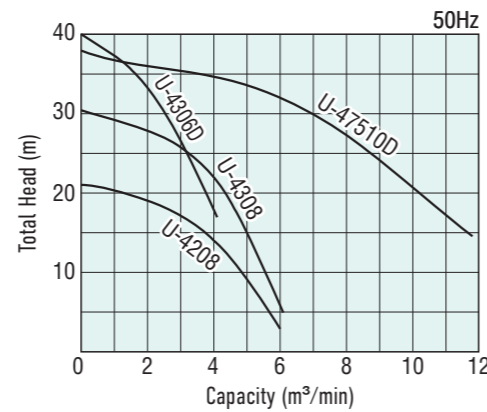
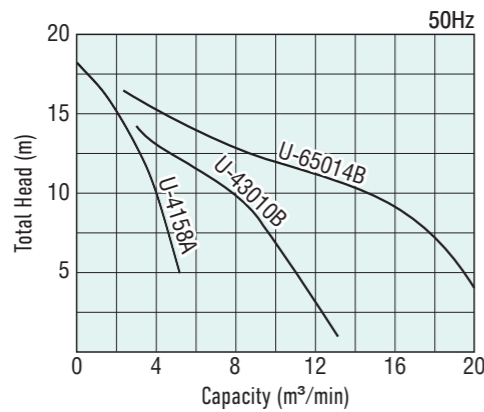
Cable Extension Discharge Modification Material Change Heat Resistant Seawater Resistant



Painting Change Lubricant Oil Change

The available options vary depending on the model. For more information, refer to "Option" page 53.

## Performance Curve



## Main Specifications

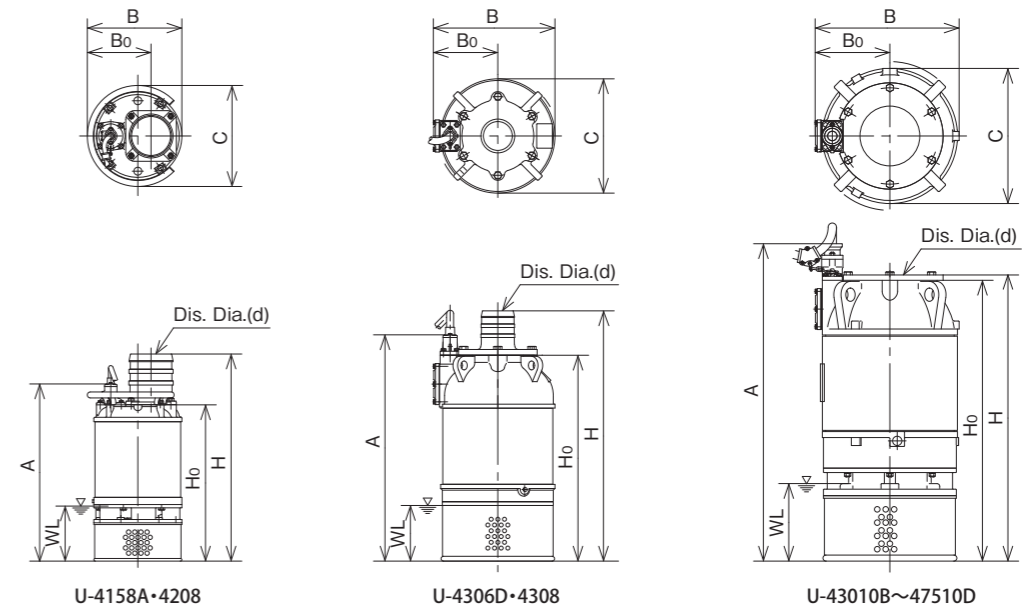
Discharge Diameter (mm)	200	200	150	200	250	350	250
Pump Models	U-4158A	U-4208	U-4306D	U-4308	U-43010B	U-65014B	U-47510D
Motor Output (kW)	11	15	22	22	22	37	55
Medium	Spring Water / Muddy Water						
Temperature	Max 40 Degrees Celsius						
Pump	Double Type Mechanical Seal						
Shaft Seal	Double Type Mechanical Seal						
Shaft Bearing	Sealed Ball Bearing				Duplex Ball Bearing		
Impeller	High Chrome						
	Semi-open						
Casing	*FCD500			*FC200			*FC250
Motor	Dry Type Induction Motor/4pole					Dry Type Induction Motor/6pole	Dry Type Induction Motor/4pole
Type/Pole	Dry Type Induction Motor/4pole					Dry Type Induction Motor/6pole	Dry Type Induction Motor/4pole
Insulation Class	B	E	F				
Protector	Auto-Cut					Miniature Thermal Protector + Infiltrative Water Detector	
Frame	*FC200					*FC250	
Shaft	Stainless Steel						
Discharge Type	Hose Coupling				Companion Flange		

\*FCD : Ductile Cast Iron / FC : Cast Iron

## Specifications

Discharge Diameter (mm)	Pump Models	Motor Output		Total Head		Capacity			Starting	Max Solid Through		Weight (without cable)		Cable Length	
		kW	HP	m	ft	m³/min	m³/hr	USGPM		mm	in	kg	lb	m	ft
200 (8)	U-4158A	11	15	10	33	4	240	1,057	DOL	20	0.8	77	169	10	32.8
200 (8)	U-4208	15	20	14	46	4	240	1,057	DOL	20	0.8	227/212	499/466	10	32.8
150 (6)	U-4306D	22	30	33	108	2	120	528	DOL	18	0.72	430	946	10	32.8
200 (8)	U-4308	22	30	22	72	4	240	1,057	DOL	18	0.72	440	968	10	32.8
				15	50	5	300	1,321							
250 (10)	U-43010B	22	30	10	33	8	480	2,113	DOL	25	1	440	968	10	32.8
350 (14)	U-65014B	37	50	10	33	14	840	3,699	Star-Delta	65	2.6	700	1,540	10	32.8
250 (10)	U-47510D	55	75	27	89	8	480	2,113	Star-Delta	25	1	730	1,606	20	65.6

The figure in the left of "m" is for 50Hz, in the right is for 60Hz



## External Diagrams (mm)

Pump Models	d	H	H <sub>0</sub>	A	B	B <sub>0</sub>	C	WL
U-4158A	200	941	710	805	430	290	459	250
U-4208 (50/60Hz)	200	974/976	743/746	838/840	450/430	290	459	250
U-4306D	150	1,128	928	1,020	548	291	515	250
U-4308	200	1,158	928	1,020	548	291	515	250
U-43010B	250	1,021	997	1,089	548	291	515	350
U-65014B	350	1,334	1,310	1,475	650	338	610	400
U-47510D	250	1,292	1,268	1,433	650	338	610	350

WL : Pump Starting Level