

HS SERIES



HS-615C



HS-420B / 430B

Submersible Agitator Pumps

- This series is equipped with an agitator as standard. Sands in water are smoothly transferred as the agitator effectively stirs sands in water.
- The back pressure releasing mechanism is adopted to enable a long service life of the mechanical seal. (EXCEPT HS-610 & HS-830B)
*For more information, refer to page 9.
- The structure is highly wear resistant:
 - The impeller and agitator are made of high chromium cast iron (about 25% chromium content) known for its wear resistance.
 - The suction cover liner is equipped as a standard feature. It protects the impeller and the suction cover from wear, thereby reducing the frequency of changing these components.
 - Wet end parts are thick-walled for enhancing wear resistance.

Option

Cable Extension

Discharge Modification

Material Change

Heat Resistant

Seawater Resistant

Painting Change

Quick Coupling

Sacrificial Anode

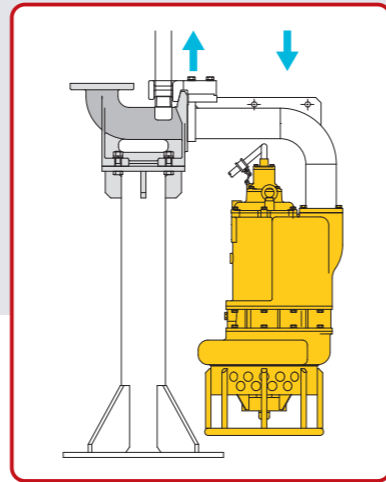
Lubricant Oil Change

The available options vary depending on the model. For more information, refer to "Option" page 53.

The casing adopts a double volute design to reduce radial thrust on the motor shaft.

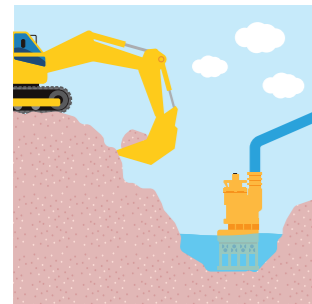
The motor can be cooled from both sides, resulting in high cooling efficiency.

The discharge outlet is on the same line as the centerline of the motor. The models are convenient for use in limited spaces.

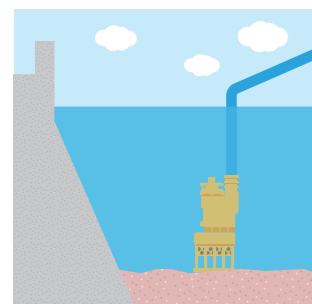


Optionally convertible to Auto coupling type

Applications

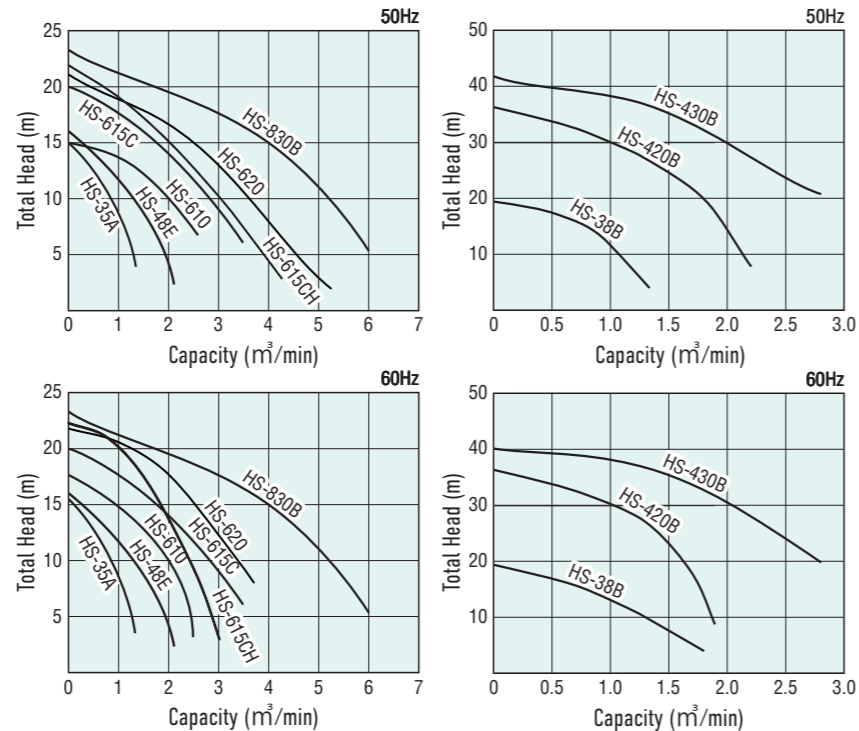


Moving and mixing mud and soil at construction sites



Moving sediments from tanks, ponds, rivers, and dams

Performance Curve



Main Specification

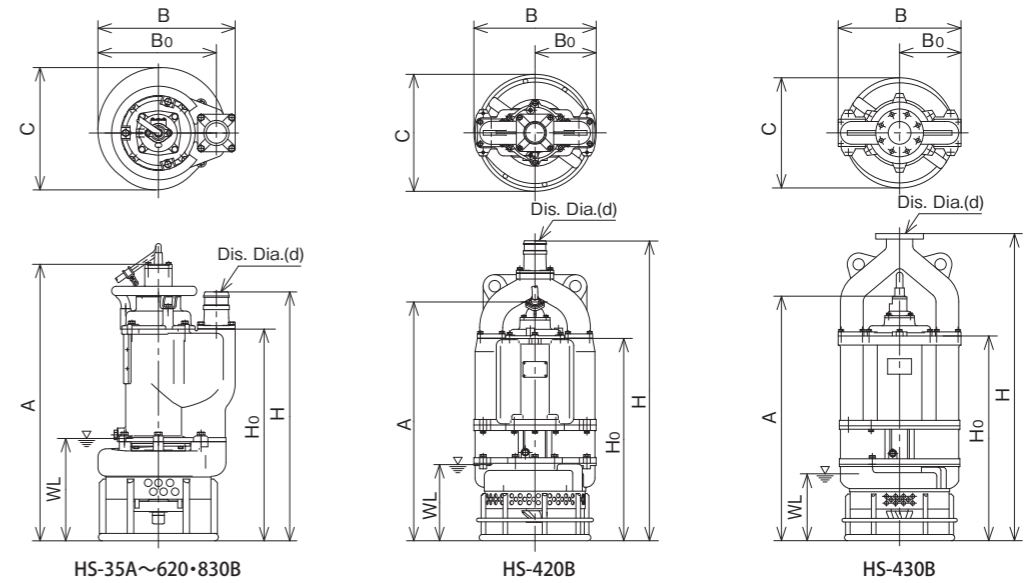
Discharge Diameter (mm)	80	80	100	150	150	150	150	100	100	200		
Pump Models	HS-35A	HS-38B	HS-48E	HS-610	HS-615C	HS-615CH	HS-620	HS-420B	HS-430B	HS-830B		
Motor Output (kW)	3.7	5.5	5.5	7.5	11	11	15	15	22	22		
Medium	Type	Rain Water / Spring Water / Muddy Water										
	Temperature	Max 40 Degrees Celsius										
Pump	Shaft Seal	Double Type Mechanical Seal										
	Shaft Bearing	Sealed Ball Bearing										
	Impeller	High Chrome Semi-open										
	Casing	*FC250						*FCD500		*FC250		
Motor	Type/Pole	Dry Type Induction Motor / 4pole										
	Class	B			F			B			F	
	Protector	Auto-Cut								Miniature Thermal Protector	Auto-Cut	
	Frame	*FC200										
Shaft	Stainless Steel											
Discharge Type	Hose Coupling							Flange		Hose Coupling		

*FCD : Ductile Cast Iron / FC : Cast Iron

Specifications

Discharge Diameter	Pump Models	Motor Output		Total Head		Capacity			Starting	Max Solid Through		Weight (without cable)		Cable Length	
		kW	HP	m	ft	m³/min	m³/hr	USGPM		mm	in	kg	lb	m	ft
80 (3)	HS-35A	3.7	5	10	33	0.8	48	211	DOL	22	0.88	110	242	10	32.8
80 (3)	HS-38B	5.5	8	15	49	0.8	48	211	DOL	18/22	0.72/0.88	119	262	10	32.8
100 (4)	HS-48E	5.5	8	10	33	1.3	78	343	DOL	25	1	119	262	10	32.8
150 (6)	HS-610	7.5	10	10	33	2	120	528	DOL	35	1.4	200	440	10	32.8
150 (6)	HS-615C	11	15	14	46	2	120	528	DOL	35	1.4	240	528	10	32.8
150 (6)	HS-615CH	11	15	17	56	1.5	90	396	DOL	35	1.4	246	541	10	32.8
150 (6)	HS-620	15	20	15	49	2.5	150	660	DOL	35	1.4	250	550	10	32.8
100 (4)	HS-420B	15	20	27	89	1.3	78	343	DOL	18	0.72	350	770	15	49.2
100 (4)	HS-430B	22	30	35	115	1.5	90	396	DOL	18	0.72	420	924	15	49.2
200 (8)	HS-830B	22	30	15	49	4	240	1,057	DOL	40	1.6	355	781	10	32.8

The figure in the left of "m" is for 50Hz, in the right is for 60Hz



External Diagrams (mm)

Pump Models	d	H	H ₀	A	B	B ₀	C	WL
HS-35A	80	731	621	811	402	347	367	300
HS-38B (50Hz)	80	734	624	814	405	350	356	300
HS-38B (60Hz)	80	731	621	811	402	347	367	300
HS-48E	100	731	621	811	402	347	368	300
HS-610	150	840	646	821	513	432	440	350
HS-615C/CH	150	1,027	833	1,008	541	460	469	400
HS-620	150	1,027	833	1,008	541	460	469	400
HS-420B	100	1,301	877	1,035	530	265	507	330
HS-430B	100	1,352	900	1,075	540	270	507	330
HS-830B	200	1,146	914	1,179	617	508	537	390

WL: Pump Starting Level