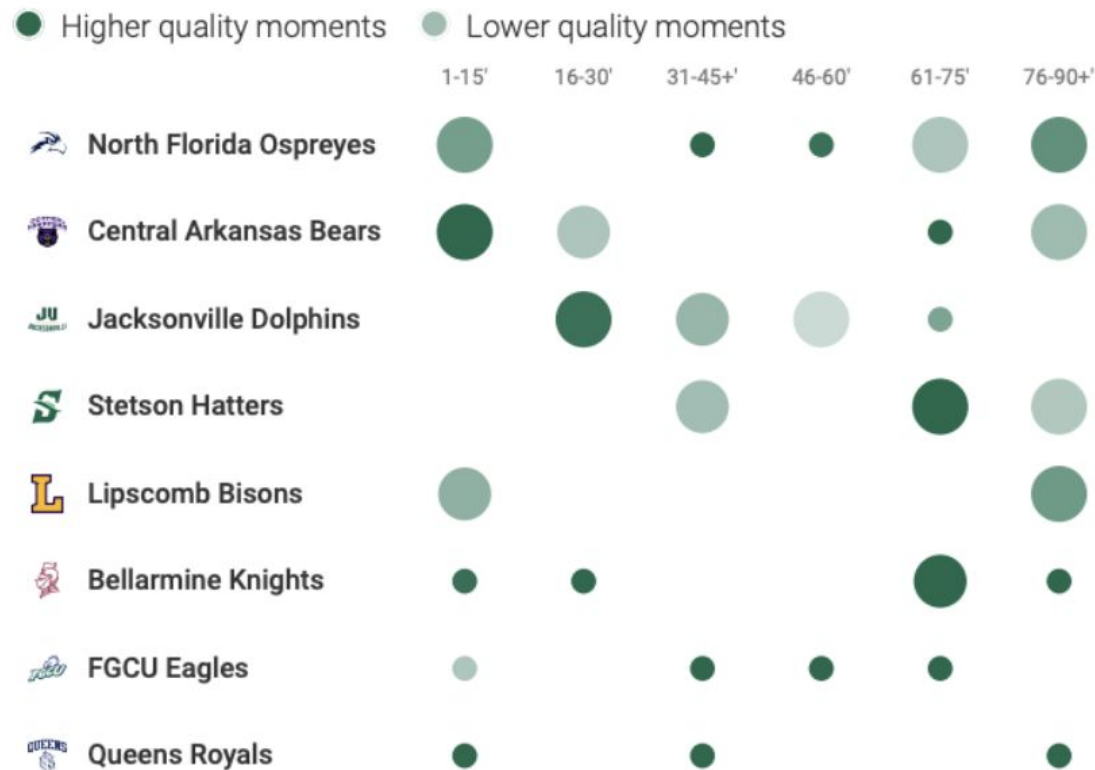


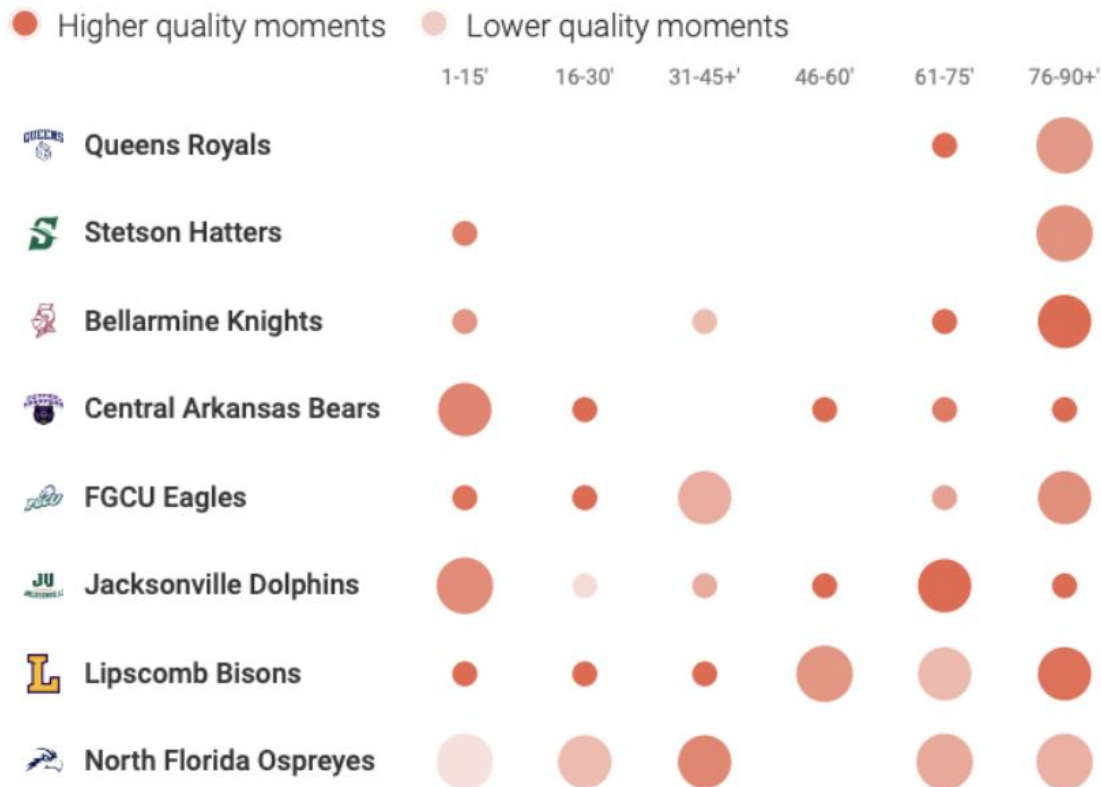


# Goals scored in match dynamics



UNF is usually more dangerous in 2nd Halves

# Goals conceded in match dynamics



UNF has received most goals in the first half, quality of chances tends to grow through the 1st half.

# Conceded goals

↑ Total

xG against

League average		7.4	9.06
1	 Stetson Hatters	4	7.64
2	 Queens Royals	4	15.05
3	 Bellarmine Knights	5	8.74
4	 Central Arkansas Bears	6	7.20
5	 FGCU Eagles	7	5.38
6	 Jacksonville Dolphins	9	8.67
7	 Lipscomb Bisons	10	12.13
8	 North Florida Ospreyes	14	7.70

Most conceded goals but should have received only 7-8 goals.

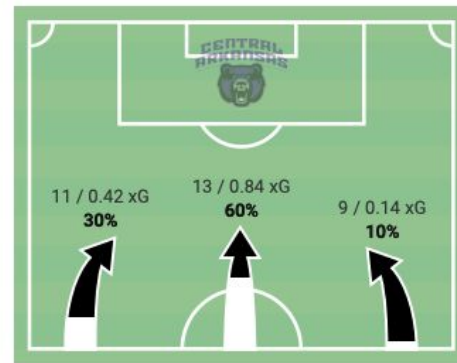
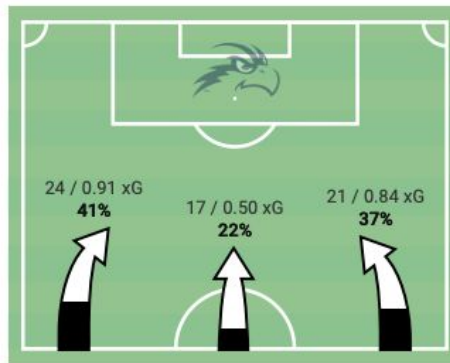
## UNF received in 2 games more than 3 goals

This 2 games have in common that the most Xg chances (Highest Quality Options) came through the middle.

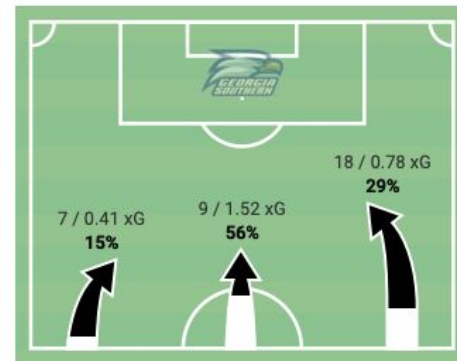
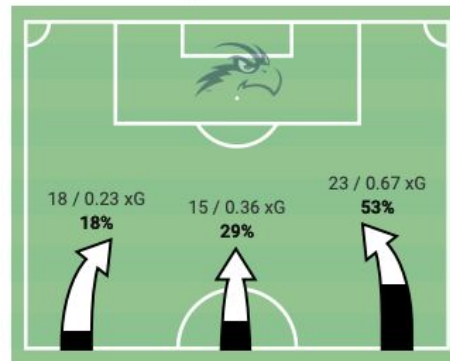
UNF 2 - 6 CA

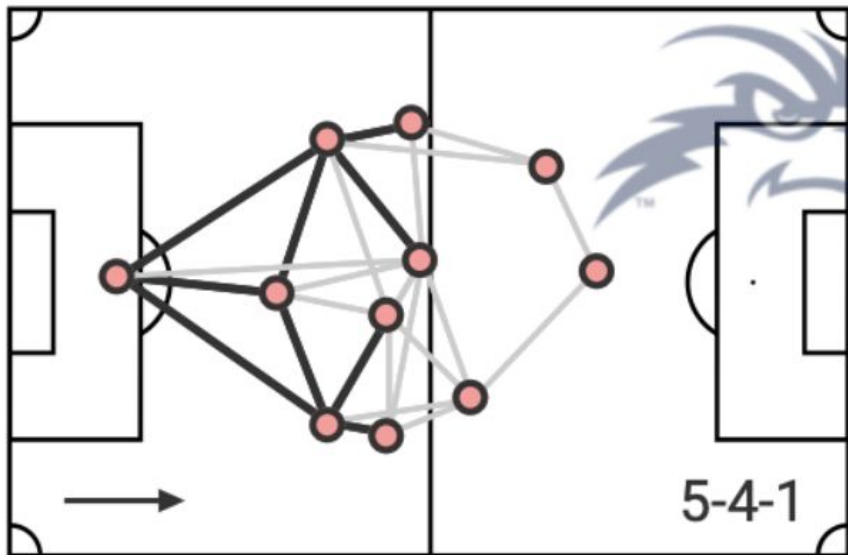
UNF 1 - 4 GS

## Attacks by flanks and danger level

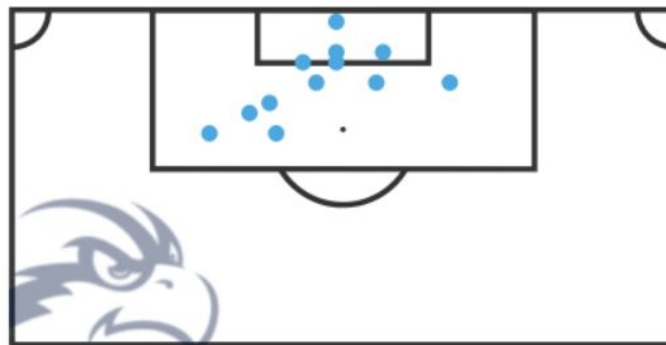
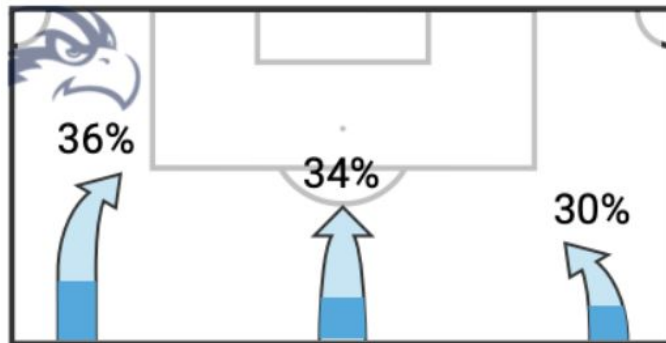


## Attacks by flanks and danger level





- Shorter Passes between defensive line and midfield.
- Longer Passes from Midfield to Strikers.



Attack is Slightly inclined to the left. ALL Goals have been inside the box and many from left side.

## Goals

		↓ Total	xG
	League average	7.4	9.06
1	 North Florida Ospreyes	13	10.47

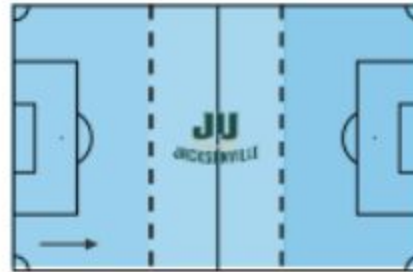
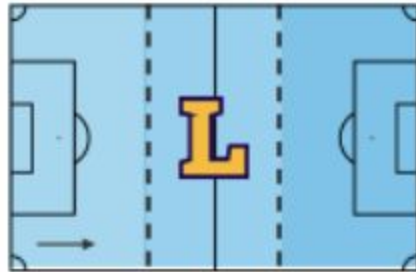
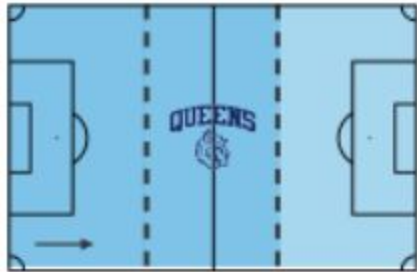
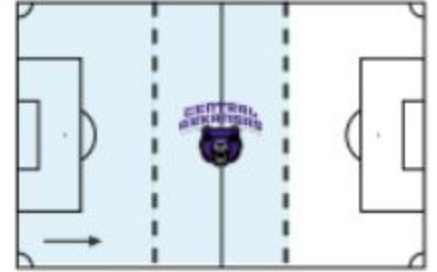
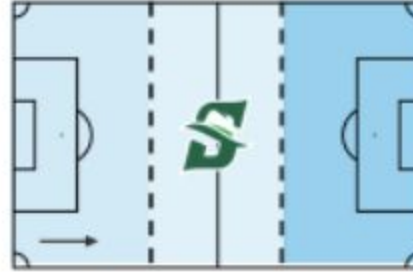
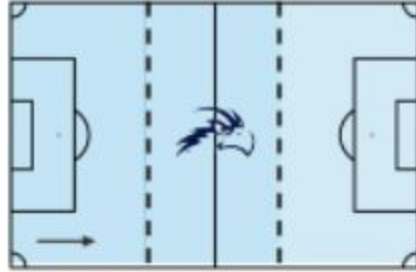
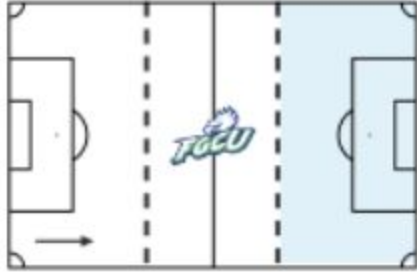
## Shots

		↓ Avg. per 90	Average shot distance, m	xG per shot
	League average	10.59	18.9	0.12
1	 Central Arkansas Bears	13.72	20.27	0.13
2	 Lipscomb Bisons	13.29	19.19	0.11
3	 North Florida Ospreyes	11.05	16.49	0.13
4	 Stetson Hatters	10.51	19.83	0.10
5	 FGCU Eagles	10.47	19.11	0.15
6	 Jacksonville Dolphins	9.95	19.39	0.11
7	 Bellarmine Knights	8.55	17.78	0.13
8	 Queens Royals	7.17	18.89	0.12

Most scoring team in Regular Season. Third most shots per 90 and closer in distance to goal in ASUN.

# Losses by zones

● More than other teams ○ Less than other teams



Lose the ball less than other teams. Zone where they lose the most is Own Third.



# Ball possession losses

■ Less than league average   ■ More than league average



## Pressing intensity (PPDA)

1 Avg. per 90

	League average	8.61
1	 FGCU Eagles	4.67
2	 Stetson Hatters	5.94
3	 Lipscomb Bisons	6.87
4	 Jacksonville Dolphins	7.76
5	 Central Arkansas Bears	7.99
6	 North Florida Ospreys	8.62
7	 Queens Royals	9.27
8	 Bellarmine Knights	17.79

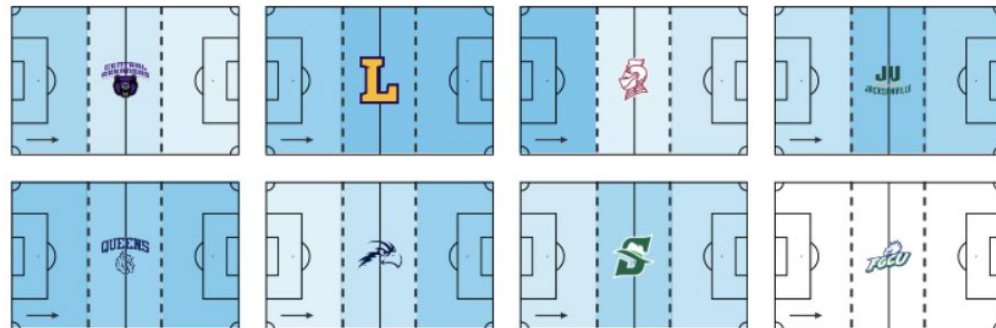
## Ball possession recoveries

■ More than league average ■ Less than league average











## Recoveries by zones

● More than other teams ○ Less than other teams



UNF Recover most balls in the final third, left wing is more involved in this pressure.

# Passes

		↓ Avg. per 90	Forward passes	Lateral passes	Long passes	Average pass length, m	Match tempo
	League average	323.20 78%	122.3 66%	114.6 87%	47.1 49%	21.24	14.6
1	 FGCU Eagles	420.38 83%	140.56 71%	172.15 90%	49.58 52%	20.75	15.2
2	 North Florida Ospreyes	404.86 84%	131.59 72%	152.73 90%	39.27 50%	19.21	15.7
3	 Jacksonville Dolphins	376.59 82%	136.87 71%	128.29 88%	42.86 51%	19.57	15.0
4	 Lipscomb Bisons	351.59 78%	136.71 70%	124.39 85%	44.51 51%	21.53	15.1
5	 Stetson Hatters	310.15 77%	118.02 64%	107.11 87%	49.04 45%	21.29	13.9
6	 Queens Royals	259.37 76%	102.36 63%	85.43 84%	46.11 49%	22.06	13.1
7	 Central Arkansas Bears	259.29 73%	111.41 59%	88.83 85%	53.36 53%	22.72	14.4
8	 Bellarmine Knights	203.33 64%	100.58 52%	58.26 77%	52.03 44%	22.81	14.2

UNF is second team with most possession. Most of their passes are lateral. Average pass length is the shortest in ASUN

## Passes to final third

↓ Avg. per 90

	League average	49.09	61%
1	 Lipscomb Bisons	61.59	66%
2	 FGCU Eagles	53.84	66%
3	 Jacksonville Dolphins	51.84	63%
4	 Central Arkansas Bears	50.02	61%
5	 Stetson Hatters	48.77	61%
6	 North Florida Ospreys	48.00	65%
7	 Queens Royals	40.43	54%
8	 Bellarmine Knights	38.26	44%

## Progressive passes

↓ Avg. per 90

	League average	65.23	69%
1	 Lipscomb Bisons	75.98	77%
2	 North Florida Ospreys	68.73	69%
3	 Jacksonville Dolphins	67.88	72%
4	 FGCU Eagles	67.09	74%
5	 Central Arkansas Bears	66.41	67%
6	 Stetson Hatters	61.30	68%
7	 Queens Royals	58.35	65%
8	 Bellarmine Knights	56.09	57%

## Deep completions

↓ Avg. per 90

	League average	5.23
1	 North Florida Ospreys	8.73
2	 Lipscomb Bisons	6.46
3	 Stetson Hatters	5.93
4	 Central Arkansas Bears	5.86
5	 FGCU Eagles	4.91
6	 Jacksonville Dolphins	4.56
7	 Bellarmine Knights	3.04
8	 Queens Royals	2.35

## Through passes

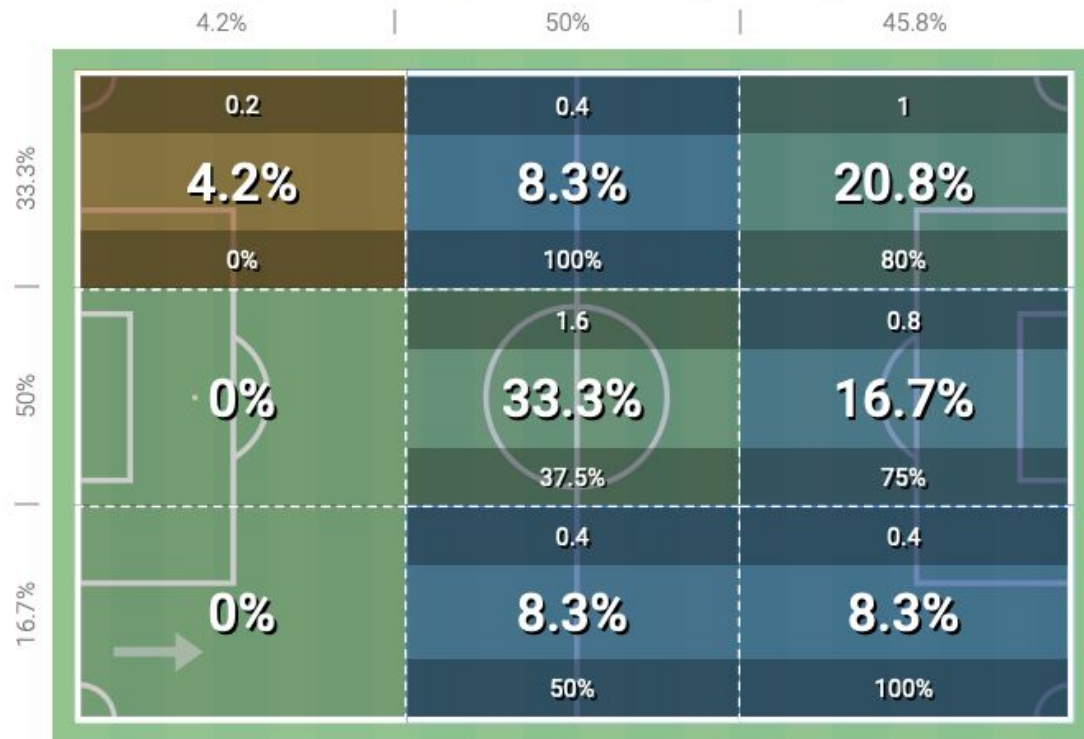
↓ Avg. per 90

	League average	3.10	34%
1	 North Florida Ospreys	4.77	51%
2	 Jacksonville Dolphins	4.29	23%
3	 Central Arkansas Bears	4.18	36%
4	 Lipscomb Bisons	3.54	38%
5	 FGCU Eagles	2.62	31%
6	 Bellarmine Knights	2.61	22%
7	 Queens Royals	2.10	18%
8	 Stetson Hatters	0.67	60%

UNF is the team which gets the most balls near the goal and through passes per 90. In Progressive passes is 2nd.

# Through passes

■ Better than league average
 ■ Worse than league average









## Aerial duels




↓ Avg. per 90

	League average	41.81 47%
1	 Bellarmine Knights	59.28 48%
2	 Central Arkansas Bears	55.87 51%
3	 Queens Royals	48.34 43%
4	 Jacksonville Dolphins	37.60 46%
5	 Lipscomb Bisons	37.07 47%
6	 Stetson Hatters	34.76 43%
7	 North Florida Ospreyes	34.09 43%
8	 FGCU Eagles	27.49 52%

UNF and FGCU bottom in aerial duels

		↓ Total	Avg. per 90	xG
	<b>J. Acuna</b> North Florida Ospreyes	6	1.30	3.41
	<b>P. Fontana</b> Central Arkansas Bears	4	0.83	3.85
	<b>D. Perez</b> North Florida Ospreyes	4	0.72	2.71
4	<b>D. Richards</b> Central Arkansas Bears	3	0.55	1.08
5	<b>O. Correa</b> Jacksonville Dolphins	3	0.47	2.39
6	<b>T. Henriksen</b> Jacksonville Dolphins	2	0.83	1.39
7	<b>M. Hauser</b> Stetson Hatters	2	0.52	0.63
8	<b>N. Harshaw</b> Bellarmine Knights	2	0.51	1.62
9	<b>Afonso Conde</b> Stetson Hatters	2	0.51	1.66
10	<b>J. Smith</b> Lipscomb Bisons	2	0.34	3.86

		↓ Total	Avg. per 90	xG/Shot
	<b>J. Acuna</b> North Florida Ospreyes	20	4.34	0.17
	<b>D. Perez</b> North Florida Ospreyes	19	3.44	0.14
	<b>J. Smith</b> Lipscomb Bisons	19	3.23	0.2
4	<b>D. Richards</b> Central Arkansas Bears	18	3.31	0.06
5	<b>C. Brandao</b> Queens Royals	17	2.22	0.1
6	<b>D. Karsten</b> Lipscomb Bisons	16	2.50	0.14
7	<b>O. Correa</b> Jacksonville Dolphins	16	2.50	0.15
8	<b>M. Colombo</b> Lipscomb Bisons	16	2.10	0.04
9	<b>C. Brunet</b> Central Arkansas Bears	15	3.67	0.09
10	<b>P. Fontana</b> Central Arkansas Bears	14	2.90	0.27

		↓ Avg. per 90
	<b>J. Acuna</b> North Florida Ospreyes	5.20
	<b>D. Karsten</b> Lipscomb Bisons	5.01
	<b>J. Smith</b> Lipscomb Bisons	4.92
4	<b>D. Perez</b> North Florida Ospreyes	4.16
5	<b>Afonso Conde</b> Stetson Hatters	4.04
6	<b>P. Fontana</b> Central Arkansas Bears	3.72
7	<b>L. Jones</b> Lipscomb Bisons	3.45
8	<b>A. Taylor</b> North Florida Ospreyes	3.38
9	<b>C. Bourliot</b> Queens Royals	3.28
10	<b>D. Richards</b> Central Arkansas Bears	3.12

## Passes

↓ Avg. per 90

	<b>V. Lopes</b> FGCU Eagles	<b>64.20</b> 91%
	<b>L. Windschauer</b> FGCU Eagles	<b>62.24</b> 86%
	<b>A. Drey</b> FGCU Eagles	<b>57.05</b> 87%
4	<b>A. Barnett</b> North Florida Ospreyes	<b>53.54</b> 89%
5	<b>R. Rios</b> North Florida Ospreyes	<b>52.71</b> 85%
6	<b>N. Kishenko</b> North Florida Ospreyes	<b>52.37</b> 87%
7	<b>K. Yorke</b> Lipscomb Bisons	<b>51.66</b> 83%
8	<b>C. Lorient</b> Stetson Hatters	<b>51.62</b> 85%
9	<b>L. Natoli</b> North Florida Ospreyes	<b>49.11</b> 87%
10	<b>M. Skinner</b> Jacksonville Dolphins	<b>47.98</b> 89%


Barnett, Rios, Kishenko, Natoli

Most Involved from UNF



## Key passes

↓ Avg. per 90

	<b>D. Perez</b> North Florida Ospreyes	2.17
	<b>L. Naumann</b> Lipscomb Bisons	2.00
	<b>Miyakawa</b> North Florida Ospreyes	1.81
4	<b>X. Csato</b> Stetson Hatters	1.76
5	<b>D. Karsten</b> Lipscomb Bisons	1.57
6	<b>L. Jones</b> Lipscomb Bisons	1.48
7	<b>C. Ahl</b> Stetson Hatters	1.44
8	<b>A. Mattocks</b> North Florida Ospreyes	1.30
9	<b>C. Wood</b> Jacksonville Dolphins	1.28
10	<b>S. Ichikawa</b> Central Arkansas Bears	1.25

Passes which end in a shot.

## Deep completions

↓ Avg. per 90

	<b>Miyakawa</b> North Florida Ospreyes	1.99
	<b>D. Perez</b> North Florida Ospreyes	1.81
	<b>M. Colombo</b> Lipscomb Bisons	1.57
4	<b>C. Wood</b> Jacksonville Dolphins	1.49
5	<b>S. Ichikawa</b> Central Arkansas Bears	1.42
6	<b>A. Mata</b> Stetson Hatters	1.28
7	<b>A. Rodríguez</b> Stetson Hatters	1.28
8	<b>A. Khelil</b> North Florida Ospreyes	1.15
9	<b>X. Csato</b> Stetson Hatters	1.12
10	<b>L. Naumann</b> Lipscomb Bisons	1.11

Pass that is targeted to the zone within 20 meters of the opponent's goal.

## Progressive passes

↓ Avg. per 90

	<b>T. Monroe</b> Lipscomb Bisons	<b>13.83</b> 71%
	<b>R. Rios</b> North Florida Ospreyes	<b>12.77</b> 82%
	<b>K. Yorke</b> Lipscomb Bisons	<b>12.59</b> 77%
4	<b>P. Danner</b> Jacksonville Dolphins	<b>12.30</b> 69%
5	<b>C. Lorient</b> Stetson Hatters	<b>11.27</b> 77%
6	<b>L. Windschauer</b> FGCU Eagles	<b>10.61</b> 73%
7	<b>M. Skinner</b> Jacksonville Dolphins	<b>10.59</b> 78%
8	<b>M. Colombo</b> Lipscomb Bisons	<b>10.50</b> 86%
9	<b>Canovas</b> Queens Royals	<b>10.40</b> 69%
10	<b>E. Correia</b> Central Arkansas Bears	<b>9.85</b> 64%