

ශ්‍රී ලංකා විභාග දෙපාර්තමේන්තුව ශ්‍රී ලංකා විභාග දෙපාර්තමේන්තුව ශ්‍රී ලංකා විභාග දෙපාර්තමේන්තුව ශ්‍රී ලංකා විභාග දෙපාර්තමේන්තුව ශ්‍රී ලංකා විභාග දෙපාර්තමේන්තුව
 இலங்கைப் பரீட்சைத் திணைக்களம் இலங்கைப் பரීட்சைத் திணைக்களம் இலங்கைப் பரීட்சைத் திணைக்களம் இலங்கைப் பரීட்சைத் திணைக்களம் இலங்கைப் பரීட்சைத் திணைக்களம்
 Department of Examinations, Sri Lanka Department of Examinations, Sri Lanka Department of Examinations, Sri Lanka Department of Examinations, Sri Lanka Department of Examinations, Sri Lanka

අධ්‍යයන සෞඳ්‍ය සහතික පත්‍ර (උසස් පෙළ) විභාගය, 2012 අගෝස්තු
 கல்விப் பொதுத் தராதரப் பத்திர(உயர் தர)ப் பரீட்சை, 2012 ஓகஸ்ட்
 General Certificate of Education (Adv. Level) Examination, August 2012

නව නිර්දේශය
 புதிய பாடத்திட்டம்
 New Syllabus

තොරතුරු හා සන්නිවේදන තාක්ෂණය I
 தகவல், தொடர்பாடல் தொழினுட்பவியல் I
 Information & Communication Technology I

20 E I

පැය දෙකයි
 இரண்டு மணித்தியாலங்கள்
 Two hours

Instructions:

- * Answer all the questions.
- * Write your **Index Number** in the space provided in the answer sheet.
- * Use of calculators is **not** allowed.
- * Instructions are given on the back of the answer sheet. Follow those carefully.
- * In each of the questions 1 to 50, pick one of the alternatives from (1), (2), (3), (4), (5) which is **correct** or **most appropriate** and mark your response with a cross (X) in accordance with the instructions given on the back of the answer sheet.

1. Who is considered as the first computer programmer?
 (1) John Von Neumann (2) Blaise Pascal
 (3) Charles Babbage (4) Ada Augusta Lovelace
 (5) John Presper Eckert
2. Which of the following technologies has been used in the Third Generation Computers?
 (1) Integrated Circuits (ICs) (2) Large Scale Integration (LSI)
 (3) Micro Processors (4) Transistors
 (5) Vacuum Tubes
3. "The data in is read by using the Laser technology."
 Which of the following is most appropriate to fill the blank in the above statement?
 (1) Floppy Disk (2) Magnetic Tape (3) Compact Disk
 (4) Magnetic Hard Disk (5) Flash Memory
4. Consider the following statements about data and information.
 A - The symbols '101011101'
 B - Numbers, characters and images
 C - Facts derived from a study
 D - Facts that have been processed in such a way as to be meaningful to the person who receives it
 Which of the above statements best describe/s 'information'?
 (1) D only. (2) A and B only. (3) C and D only.
 (4) A, B and C only. (5) B, C and D only.
5. The binary number equivalent to 37_{10} is
 (1) 0100101. (2) 0100111. (3) 0100100. (4) 0110110. (5) 0110111.
6. In computer networks, acronym DHCP stands for
 (1) Dynamic Host Control Protocol. (2) Dynamic Host Configuration Protocol.
 (3) Domain Host Configuration Protocol. (4) Dynamic Host Configuration Practice.
 (5) Dynamic Host Control Parameters.
7. Which of the following statements is correct about relational databases?
 (1) The primary key of a table is selected from alternate keys.
 (2) Duplicate values are not allowed in a foreign key field of a table.
 (3) A table cannot be created without a primary key.
 (4) A foreign key of a table should be the primary key of another table.
 (5) A table should have alternate keys.
8. What is the function of a DNS in a Computer Network?
 (1) Assigns IP addresses (2) Translates domain names to IP addresses
 (3) Protects a network from viruses (4) Provides directory services to users
 (5) Connects multiple computer networks together.

9. The command that can be used to check the network configuration of a computer is
 (1) traceroute. (2) netstat. (3) hostname. (4) ipconfig. (5) ping.
10. Human blood circulatory system can be classified as a
 (1) natural and closed system. (2) artificial and closed system.
 (3) artificial and open system. (4) natural and open system.
 (5) natural and artificial system.
11. Which of the following best describes a non-functional requirement of a mobile phone?
 (1) Sending a short message (2) Receiving a telephone call
 (3) Selecting a number from the contact list (4) Making a telephone call
 (5) Having one year warranty for the battery
12. An electronic washing machine can be best considered as a/an
 (1) Information system. (2) Automated system.
 (3) Expert system. (4) Management support system.
 (5) Transaction processing system.
13. Which is the correct mark up for a comment in an HTML document?
 (1) <! Districts of Sri Lanka (2) <!-- Districts of Sri Lanka -->
 (3) //Districts of Sri Lanka (4) <*" Districts of Sri Lanka *">
 (5) <! Districts of Sri Lanka !>
14. The required minimum and maximum working hours per day for an employee in a factory are 5 and 12 respectively. Which of the following is the most appropriate validation check to ensure that the integer value entered as the working hours, through a web-based form, is correct?
 (1) Range (2) Length (3) Type
 (4) Numeric value (5) Number of digits
15. $144_8 + 175_8 =$
 (1) 225_8 (2) 341_8 (3) 441_8 (4) 531_8 (5) 314_8
16. Which of the following statements is correct about IP addresses and subnet masks?
 (1) 192.248.32.3 is a Class B IP address.
 (2) A network with a subnet mask 255.255.255.248 can accommodate six hosts.
 (3) An IP address consists of 16 bits.
 (4) 10.32.1.5 is a Class C IP address.
 (5) 255.255.255.0 is a Class C IP address.
17. The network layer of the OSI reference model provides
 (1) error correction. (2) inter-process communication.
 (3) flow control. (4) routing of data packets.
 (5) error detection.
18. The type of operating system that is most suitable for an automated air traffic control system is
 (1) multi-user multi-tasking. (2) single-user multi-tasking.
 (3) real time. (4) single-user single-tasking.
 (5) multi-threading.
19. What is the result of evaluating the Python expression $10 \% 3$?
 (1) 0 (2) 1 (3) 2 (4) 3 (5) 10

20. Consider the following pseudo code:

Begin

total = 0

For count = 1 **To** 10

If (count is odd) **Then**

total = total + count

EndIf

Next count

Display total

End

What is the output of the above pseudo code?

- (1) 10 (2) 15 (3) 20 (4) 25 (5) 55

21. Consider the following models:

A - Network

B - Waterfall

C - Relational

Which of the above is a/are database model/s?

- (1) A only. (2) B only. (3) C only.
(4) A and B only. (5) A and C only.

22. Consider the following statements about **Relational Databases**:

A - A table is considered as an object.

B - A column of data in a table is called a field/an attribute of that table.

C - A row of data in a table is called a record.

Which of the above statements is/are correct?

- (1) A only. (2) B only. (3) A and B only.
(4) A and C only. (5) B and C only.

23. Consider the following statements with respect to ER diagrams:

A - A relationship in an ER diagram can be implemented as a table in a relational database.

B - A relationship may have attributes attached to it.

C - Only two entities can be attached to a relationship.

Which of the above statements is/are correct?

- (1) A only. (2) B only. (3) A and B only.
(4) A and C only. (5) B and C only.

24. Consider the following relation:

student(stdNo, name, address, nicNo, date_of_birth)

Which of the following SQL (Structured Query Language) statements on the student relation is syntactically correct?

- (1) select *.* from student (2) select all from student
(3) select * from student (4) select stdNo.name from student
(5) select stdNo; name from student

25. Consider the following database operations:

A - Remove records from a table

B - Add new data to a table

C - Modify the existing data in a table

D - Retrieve data from a table

"The SQL statements should be used to perform the database operations A, B, C and D respectively."

Which of the following is most appropriate to fill the blank in the above statement?

- (1) delete, select, update and insert (2) delete, insert, select and update
(3) select, delete, insert and update (4) insert, select, delete and update
(5) delete, insert, update and select

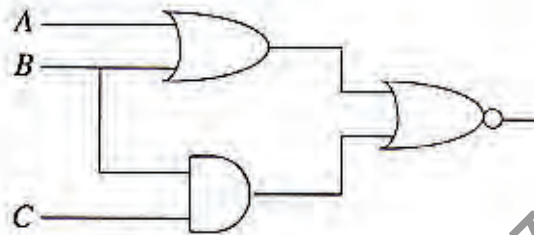
26. What would be the result if the following Boolean expression is simplified?

$$F(x, y) = \bar{x}\bar{y}(\bar{x} + y)(y + \bar{y})$$

- (1) \bar{x} (2) \bar{y} (3) x (4) y (5) xy

27. Which of the following Boolean expressions represents the output of the given logic circuit?

- (1) $(\overline{A+B}) + (\overline{B \cdot C})$
- (2) $(\overline{A+B}) \cdot (\overline{B \cdot C})$
- (3) $\overline{(A+B) + (B \cdot C)}$
- (4) $(\overline{A \cdot B}) + (\overline{B \cdot C})$
- (5) $\overline{(A \cdot B) + (B \cdot C)}$



28. The component that decodes the instructions fetched into the CPU is called the

- (1) Primary Memory. (2) Register Unit. (3) Control Unit.
- (4) ALU. (5) Program Counter.

29. Which of the following data storage devices provides the fastest random access?

- (1) Main memory (2) Magnetic disk (3) CD/DVD
- (4) Flash drive (5) Hard disk

30. A person employed in an overseas country placed an on-line order to deliver a birthday present to his mother who is living in Sri Lanka, using the web-based services of a company. This transaction of ordering the birthday present could be best classified as

- (1) Consumer to Retailer. (2) Consumer to Business. (3) Business to Consumer.
- (4) Business to Business. (5) Employee to Business.

31. Which of the following is most cost effective and secure in transmitting private and confidential messages and notices among the employees of an organization?

- (1) Electronic notice boards (2) Teleconferencing (3) e-mail
- (4) A social network (5) A website

32. Consider the following characteristics:

- A - Autonomous
- B - Performs in dynamic environments
- C - Functions restricted to a time period
- D - Interacts with highly increasing information

Which of the above are characteristics of a Software Agent?

- (1) A and B only. (2) A and C only. (3) A, B and C only.
- (4) A, B and D only. (5) B, C and D only.

33. Ubiquitous computing will be useful in applications such as

- (1) Customisation of a domestic environment. (2) Processing of large scale examination results.
- (3) Auto Teller Machine (ATM). (4) Point of Sales (POS) Machine.
- (5) Controlling a wall clock.

34. Consider the following terms:

- A - Input B - Output C - Process D - Storage

Which of the above are essential for a system?

- (1) A and B only. (2) A, B and C only. (3) A, C and D only.
- (4) B, C and D only. (5) All A, B, C and D.

35. "Video conferencing is best described as a/an discussion through between two or more individuals in different locations."

Which of the following is the most appropriate answer to fill the blanks in the above statement?

- (1) video, TV (2) audio, telephone (3) audio, network
- (4) audio visual, TV (5) audio visual, network

36. Consider the following URL:

<http://www.schools.org/2012/lessons/index.html>

Which of the following indicates the protocol of the above URL?

- (1) http (2) html (3) www
- (4) org (5) www.schools.org

37. Which of the following HTML codes generates the table shown below?

Time Table

Time	Monday	Tuesday
8:00 - 9:00	Mathematics	Science

(1)

```
<caption>Time Table</caption>
<table border = "1">
  <thead>
    <tr>
      <th>Time</th>
      <th>Monday</th>
      <th>Tuesday</th>
    </tr>
  </thead>
  <tr>
    <td>8:00 - 9:00</td>
    <td>Mathematics</td>
    <td>Science</td>
  </tr>
</table>
```

(2)

```
<table border = "1">
  <caption>Time Table</caption>
  <tr>
    <td>Time</td>
    <td>Monday</td>
    <td>Tuesday</td>
  </tr>
  <tr>
    <td>8:00 - 9:00</td>
    <td>Mathematics</td>
    <td>Science</td>
  </tr>
</table>
```

(3)

```
<table border = "1">
  Time Table
  <tr>
    <th>Time</th>
    <th>Monday</th>
    <th>Tuesday</th>
  </tr>
  <tr>
    <td>8:00 - 9:00</td>
    <td>Mathematics</td>
    <td>Science</td>
  </tr>
</table>
```

(4)

```
<table border = "1">
  <caption>Time Table</caption>
  <tr>
    <th>Time</th>
    <th>Monday</th>
    <th>Tuesday</th>
  </tr>
  <tr>
    <td>8:00 - 9:00</td>
    <td>Mathematics</td>
    <td>Science</td>
  </tr>
</table>
```

(5)

```
<caption>Time Table</caption>
<table border = "1">
  <tr>
    <td>Time</td>
    <td>Monday</td>
    <td>Tuesday</td>
  </tr>
  <tr>
    <td>8:00 - 9:00</td>
    <td>Mathematics</td>
    <td>Science</td>
  </tr>
</table>
```

38. Consider the following XML documents:

A - `<?xml version="1.0"?>`
`<country>`
`</country>`

B - `<?xml version="1.0"?>`
`<name>Sri Lanka</name>`
`<country>`
`</country>`

C - `<?xml version="1.0"?>`
`<country>`
`<name>Sri Lanka</name>`
`</country>`

D - `<?xml version="1.0"?>`
`<name>`
`<country>Sri Lanka</country>`
`</name>`

Which of the above has/have correct XML syntax?

- (1) A only. (2) D only. (3) B and C only.
 (4) A, C and D only. (5) B, C and D only.

39. The HTML tag

`Sri Lanka`
 renders the document named "sriLanka.html" by a browser on

- (1) the same frame. (2) a new window.
 (3) the same window. (4) a frame named "_blank".
 (5) a window named "_blank".

40. Consider the following statements about HTML :

- A - A well-formed HTML document should comprise two sections, a head and a body.
 B - An HTML document is a computer program.
 C - White spaces, tabs and blank lines can always be used to format the display of a document.
 D - The content of the body section is displayed by browsers.

Which of the above are correct?

- (1) A and D only. (2) B and C only. (3) B and D only.
 (4) A, C and D only. (5) B, C and D only.

41. The main advantage of creating more than one partition in a hard disk is the

- (1) separation of the operating system and program files.
 (2) ability to retrieve files efficiently.
 (3) easiness of making directories and subdirectories.
 (4) easiness of creating multiple users.
 (5) easiness of taking backups of selected files.

42. Which of the following statements about relational databases is correct?

- (1) A value of a composite key of a table can be null.
 (2) Null values are allowed in any column of a table.
 (3) Two or more columns of a table can be combined to create the primary key.
 (4) Values of a foreign key of a table cannot be updated.
 (5) Once created, the structure of a table cannot be altered.

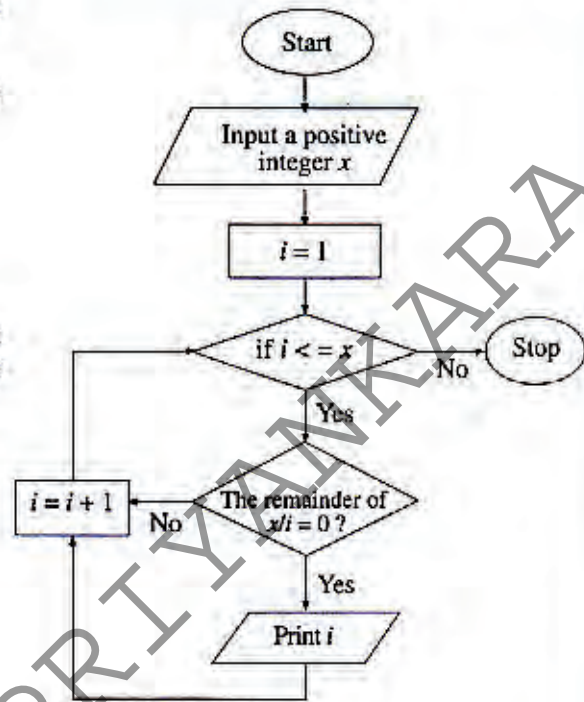
- Consider the following flow chart to answer the questions 43 and 44.

43. What flow control structure/s is/are used in the flow chart?

- (1) Sequence only.
- (2) Sequence and Selection only.
- (3) Sequence and Iteration only.
- (4) Selection and Iteration only.
- (5) Sequence, Selection and Iteration only.

44. Which of the following statements about the algorithm represented by this flow chart is correct if the user inputs the value 6?

- (1) It stops when the value of i is equal to 6.
- (2) It prints the value 4 as one of its outputs.
- (3) It prints the value 2 as one of its outputs.
- (4) It prints all the integers from 1 to 6.
- (5) It prints all the integers from 1 to 5.



45. Consider the following assignment statements:

A - $a, b = \text{"Nimal"}, 30$

B - $a, b = 1$

C - $a = b = 1$

D - $a = \text{True}$

E - $a = \text{true}$

Which of the above are syntactically correct Python statements?

- (1) A and C only.
- (2) B and D only.
- (3) A, C and D only.
- (4) B, D and E only.
- (5) C, D and E only.

46. Consider the following statements about Python data types:

A - A tuple consists of ordered number of values separated by commas.

B - A dictionary comprises of an unordered set of **key:value** pairs separated by commas and enclosed in "{", "}" brackets.

C - A value in a tuple can be modified as in a dictionary.

Which of the above statements is/are correct?

- (1) A only.
- (2) B only.
- (3) C only.
- (4) A and B only.
- (5) B and C only.

47. Which of the following Python program is syntactically correct?

(1) `for i in [8,9,10,11,12]:
#Generate the multiplication table of i
print('Multiplication table of',i)
for j in range(1,12):
print(i,'*','j','=',i*j)
print()`

(2) `for i in [8,9,10,11,12]:
#Generate the multiplication table of i
print('Multiplication table of',i)
for j in range(1,12):
print(i,'*','j','=',i*j)
print()`

(3) `for i in [8,9,10,11,12]:
#Generate the multiplication table of i
print('Multiplication table of',i)
for j in range(1,12):
print(i,'*','j','=',i*j)
print()`

(4) `for i in [8,'9',10,'11',12]:
#Generate the multiplication table of i
print('Multiplication table of',i)
for j in range(1,12):
print(i,'*','j','=',i*j):
print()`

(5) `for i in [8,9,10,11,12]:
#Generate the multiplication table of i
print('Multiplication table of',i)
for j in range(1,12):
print(i,'*','j','=',i*j)
print():`

48. Consider the following incomplete Python program:

```
name = ['Kamal', 'Ruwan', 'Nimal', 'Wimal']
datacount = len(name)
for i in range(datacount - 1):
    for k in range(i+1, datacount):
        if .....
            name[i],name[k] = name[k],name[i]
```

To arrange the data items in the **name** data structure in the reverse alphabetic order, which of the following Python statements should be included at the blank line?

- (1) `name[i] < name[k] :` (2) `name[i] > name[k] :` (3) `name[i] = name[k] :`
 (4) `name[i] < name[k] ;` (5) `name[i] > name[k] ;`

49. Consider the following Python program:

```
def fun(a):
    i, c, j = 1, a[0], 0
    while i < len(a):
        if (a[i] > c):
            c = a[i]
            j = i
        i = i + 1
    return j
print (fun([5, 2, 23, 10, -3]))
```

What is the output of this program?

- (1) 23 (2) 10 (3) 5 (4) 2 (5) -3

50. Consider the following Python program:

```
f1 = open('input.txt', 'r')
f2 = open('output.txt', 'w')
for line in f1:
    data = (line.strip()).split(",")
    total = float(data[1]) + float(data[2])
    f2.write('%7s-%4d\n' % (data[0],total))
f1.close()
f2.close()
```

The content of the file "input.txt" is given below.

```
Nimal,30,60
Saman,80,45
Upali,100,80
```

After executing the program, what would be the content of the file "output.txt" looks like?

- (1) Nimal (2) Nimal - 90 (3) Nimal - 90.0
 Saman Saman - 125 Saman - 125.0
 Upali Upali - 180 Upali - 180.0
 (4) Nimal,30,60,90 (5) Nimal - 90 Saman - 125 Upali - 180
 Saman,80,45,125
 Upali,100,80,180

* * *

Part A - Structured Essay

Answer all the four questions on this paper itself.

Do not
write in
this
column

1. (a) Give **two** techniques used in operating systems to optimize processor utilization.

- (b) The following shows a part of the result obtained by executing the "ping" command to check the network connectivity to a host connected to a computer network.

PING www.cam.ac.uk (131.111.8.46) 56(84) bytes of data.

64 bytes from ipv4.www.cam.ac.uk (131.111.8.46) : icmp_seq=1 ttl=242 time=201 ms

64 bytes from ipv4.www.cam.ac.uk (131.111.8.46) : icmp_seq=2 ttl=242 time=204 ms

64 bytes from ipv4.www.cam.ac.uk (131.111.8.46) : icmp_seq=3 ttl=242 time=196 ms

64 bytes from ipv4.www.cam.ac.uk (131.111.8.46) : icmp_seq=4 ttl=242 time=203 ms

64 bytes from ipv4.www.cam.ac.uk (131.111.8.46) : icmp_seq=5 ttl=242 time=195 ms

--- www.cam.ac.uk ping statistics ---

5 packets transmitted, 5 received,

Using the above information, answer the parts (i), (ii), (iii) and (iv) given below.

- (i) What is meant by **time** in the above result?

- (ii) What is the IP address of the server that hosts the website **www.cam.ac.uk**?

- (iii) Identify the class of the IP address obtained in (ii) above.

- (iv) What is the percentage of packet loss?

- (c) In an operating system, a process can be in one of the states, namely, *created/new*, *waiting*, *running*, *terminated*, *blocked*, *swapped out and waiting*, or *swapped out and blocked*. From which of the above states can a process be directly moved into the *blocked* state?

2. (a) Provide a suitable definition for a system.

Do not
write in
this
column

(b) Using the definition suggested in (a) above, show that a mobile phone is a system.

(c) State whether a mobile phone is a close system or an open system. Justify your answer.

(d) State whether the following requirements of a mobile phone are functional or non functional. Justify your answers.

Do not
write in
this
column

(i) A user shall be able to make a call using the mobile phone.

(ii) It shall not harm the user by emitting radiations.

Sir

UDULA

PRIYANKARA

3. (a) (i) Describe how you would determine whether a given positive integer is odd or even.

Do not
write in
this
column

- (ii) Develop a flowchart to represent an algorithm, based on the method suggested in (i) above, to decide whether a given positive integer is odd or even.

Sir UDULA PRIYANKARA

(iii) Convert the flowchart you have obtained for the above (ii) into a pseudo code.

Do not
write in
this
column

(b) Show how the computation $15 + (-5)$ is done in 8-bit two's complement arithmetic.
Explain how you deal with the carry generated in the most significant bit.

Sir UDULA PRIYANKARA

Do not
write in
this
column

4. (a) What do you mean by the terms "privacy" and "software piracy"?

- (b) Describe the term "mobile computing".

- (c) Consider the following scenario:

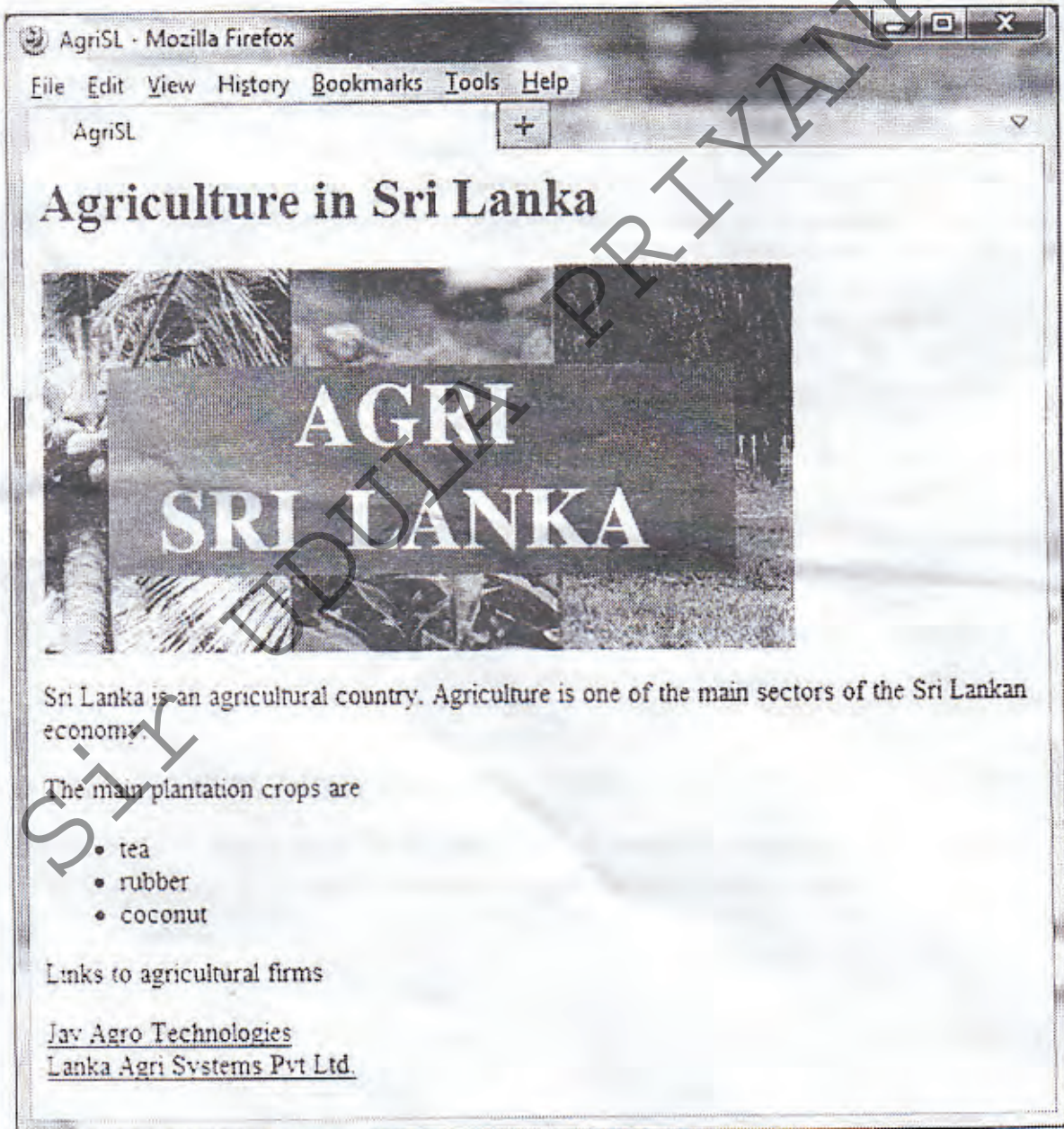
A semi conductor manufacturing company has branches in Japan and USA. At present, representatives of the development team should visit other branches of the company frequently to discuss their technical issues. Over the years, the company has realized this mechanism is costly and time consuming.

- (i) As an ICT student, suggest an *ICT based method* to conduct these technical review meetings without visiting the other branches.

- (ii) Name **three** essential ICT devices required for the method suggested in (i) above.

2. (a) What would be the responses by a browser for a paragraph tag and for a break tag in an HTML document?
- (b) What will be displayed when the following HTML code segment is rendered? Clearly indicate blank line(s) in the display, if any, with dotted lines (.....).
- ```
<p>Our evergreen school days

will not come back again</p>
<p>From the nursery to high school
we learnt the best</p>
```
- (c) A company named "Agri Sri Lanka" requires a web page as given below.



Write an HTML code to produce the above web page. Assume that the name of the image file is "agriSL.jpg". The links, Jay Agro Technologies and Lanka Agri Svstems Pvt Ltd. should link to the sites "http://www.jayagrotec.com" and "http://www.lkagrisys.com" respectively.



3. (a) An application running in a computer refers the virtual memory address, 0100110100010111 during execution.
- Calculate the maximum accessible virtual memory address space, in the above computer in Kilo Bytes?
  - What is the range (starting and ending addresses) of the memory address space identified in the section (i) above?
  - If a page size is 4 Kbits, how many bits are sufficient to represent the page number? Show your computation.

(b) Assume that A and B are computers connected to two network segments. When the command 'ipconfig' is executed in these computers, the following information is obtained:

1. In computer A

IPv4 address .....: 192.168.1.2  
 Subnet mask .....: 255.255.255.0  
 Default gateway.....: 192.168.1.254

2. In computer B

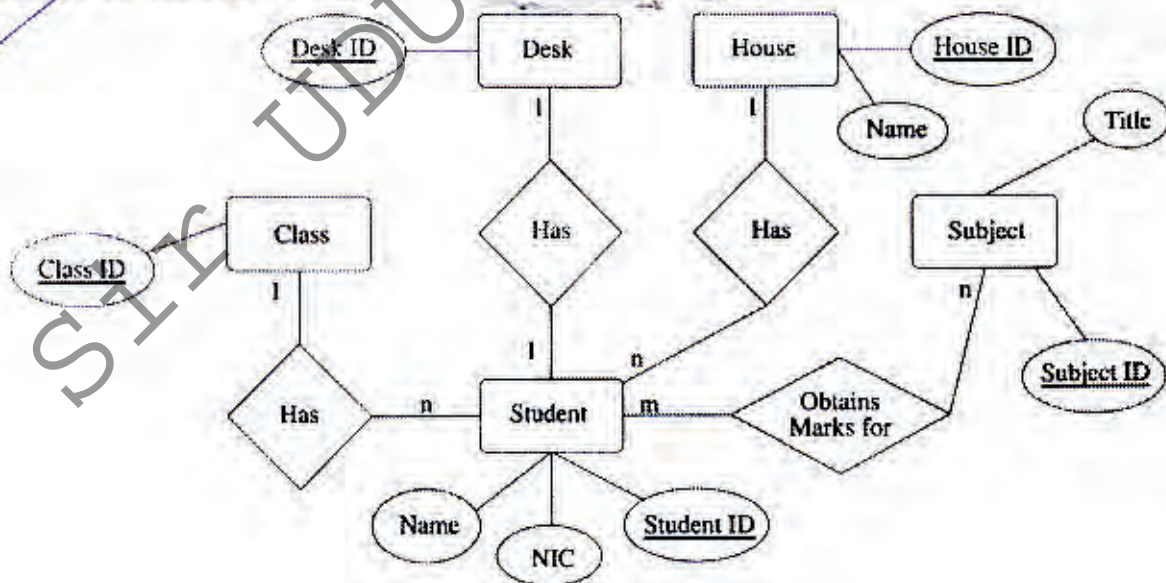
IPv4 address .....: 192.168.2.3  
 Subnet mask .....: 255.255.255.0  
 Default gateway.....: 192.168.2.254

Draw a network diagram for the above two network segments so that both A and B can communicate with each other. You should clearly indicate the IP addresses of each device in the diagram.

(c) Briefly explain the main function of each of the following systems in terms of network security.

- firewall
- proxy server
- honey pots

4. Consider the following ER diagram.



- State the **most relevant** entity or relationship in the above ER diagram to add an attribute to represent marks obtained by a student for a subject.
- Classify all the relationships in the above ER diagram as one-to-one, one-to-many or many-to-many. Justify your answer.
- Write the structure of the tables including their attributes when the above ER diagram is converted to a relational database.
- State the primary key for any table suggested in (c) above.
- Using the tables you have suggested in (c) above, write an SQL statement to get marks obtained for the subject with the value of Subject ID AL001, by the student with the value of Student ID ST001.

[ see page eleven



5. Consider the following Python program named *example.py*

```

datasummary = {}
datakeys = []
def readdata():
 global datakeys, datasummary
 f1 = open('input.txt','r')
 line = f1.readline()
 while (line):
 data = line.strip().split(",")
 for dataitem in data:
 if dataitem in datasummary:
 datasummary[dataitem] += 1
 else:
 datasummary[dataitem] = 1
 datakeys = datakeys + [dataitem]
 line = f1.readline()
 f1.close()

def processdata():
 global datakeys
 for i in range(len(datakeys) - 1):
 for j in range(i+1, len(datakeys)):
 if(datakeys[i] > datakeys[j]):
 datakeys[i], datakeys[j] = datakeys[j], datakeys[i]

def printdata():
 global datakeys, datasummary
 f2 = open('output.txt','w')
 for key in datakeys:
 f2.write('{}-{}\n'.format(key,datasummary[key]))
 f2.close()

readdata()
processdata()
printdata()

```

- What are the data types of the variables *datasummary* and *datakeys* in the above program?
- Write a Python statement required to insert the program name as a comment at the beginning of the above program.
- What is the result of execution of the command *open('input.txt','r')* in the above program?
- Describe the main task of each of the functions *readdata()*, *printdata()* and *processdata()* in the above program.
- If the content of the file *input.txt* is as given below, what would be the content of the file *output.txt* after the execution of this program?

a,d,b,a,n  
d,b,n,x,a

6. The Past Pupils Association (PPA) of a school has a large number of past students all over the country and overseas. The PPA, in collaboration with a leading local bookshop, decided to obtain support from the past students and other donors to increase the number of books in the library. The PPA agreed to develop a web-based system with on-line payment facilities for this activity. The title and the price of the required books for the library will be available on the website. The donors could select and pay for these required books available on the website. When a payment is made, this information will be sent to the bookshop for the delivery of the selected books to the school library.

- Give two advantages of the suggested on-line method over traditional methods for book collection.
- Give one disadvantage of ordering books through the suggested website.
- Explain how you could improve the website to eliminate the disadvantage given in (b) above.