



OIL AND GAS CONSULTANCY

**Deliver High-impact,
Technology-driven Energy Solutions**

About Us:

Petvic Energies Integrated Solutions LTD is a forward-thinking oil and gas services company delivering integrated subsurface, production optimization, and digital transformation solutions to the energy industry.

We combine deep domain expertise in geoscience and reservoir engineering with cutting-edge technologies such as **Artificial Intelligence (AI), Machine Learning (ML), and advanced reservoir modeling tools** to help clients reduce uncertainty, optimize production, and maximize asset value.

Our approach is driven by innovation, technical excellence, and a commitment to delivering **fit-for-purpose, data-driven solutions** across the entire oil and gas value chain.

Vision Statement

To become a leading energy solutions provider in Africa, driving innovation through advanced geoscience, engineering, and digital technologies.

Mission Statement

To deliver high-impact, technology-driven oil and gas solutions and capacity development programs that enhance operational efficiency, reduce risk, and maximize hydrocarbon recovery.

Core Values

- **Innovation** – Leveraging emerging technologies for smarter energy solutions
- **Excellence** – Delivering high-quality, reliable technical services
- **Integrity** – Upholding professionalism and ethical standards
- **Collaboration** – Partnering with clients for sustainable success
- **Capacity Development** – Empowering professionals through practical training

Managerial Capability

Petvic Energies Integrated Solutions LTD possesses a strong managerial structure driven by experienced professionals with extensive backgrounds in geoscience, reservoir engineering, digital energy solutions, and technical capacity development within the oil and gas industry.

Our management team combines technical expertise, strategic leadership, and operational efficiency to successfully execute complex projects across the upstream oil and gas value chain.

Our Managerial Strength Include:

- Effective project planning and execution
- Strong multidisciplinary team coordination
- Client-focused service delivery
- Quality assurance and operational compliance
- Technical training and workforce development
- Strategic business and partnership management

The company adopts a structured project management approach that ensures timely delivery, cost efficiency, risk mitigation, and high-quality technical outcomes.

Petvic Energies is committed to maintaining professional excellence, innovation, integrity, and continuous improvement in all areas of operation.

Technical Capability

Petvic Energies Integrated Solutions LTD provides advanced technical solutions in reservoir characterization, seismic interpretation, production optimization, artificial intelligence applications, and digital transformation for the oil and gas industry.

Our technical team possesses strong expertise in integrated subsurface studies, reservoir evaluation, and AI-driven production optimization using industry-standard software and modern analytical techniques.

Core Technical Competencies/Our Services

Artificial Intelligence Applications in Oil & Gas

We deploy AI-driven solutions to optimize upstream and Midstream operations and improve predictive capabilities.

Solutions Include:

- Production forecasting using machine learning
- Predictive maintenance and anomaly detection
- Reservoir performance prediction
- Data-driven decision support systems



Production Optimization & Flow Assurance (AI-Driven)

We integrate AI tools to enhance production efficiency and mitigate operational challenges.

Services Include:

- Production optimization modeling
- Scaling prediction and prevention
- Flow assurance monitoring
- Real-time production analytics
- Optimization of well and facility performance

Technical Training & Capacity Development

We offer industry-relevant training programs for engineers, geoscientists, and students (engineering and geosciences)).

Training Areas:

- Artificial Intelligence in Oil & Gas
- Python Programming for Engineers and Geoscience Professionals
- Machine Learning Applications for Engineers and Geoscience Professionals
- AVEVA Software Applications
- Introduction into the Oil & Gas Industry for Non-Geoscience Professionals
- Seismic Interpretation and Petrophysical Evaluation
- 3D Static Reservoir Modeling and Volumetrics Estimation
- AVO Analysis & Seismic Inversion
- Rock Physics Modeling
- Reservoir Characterization Techniques



Training Approach:

- Hands-on practical sessions
- Real industry datasets
- Software-based learning
- Hybrid (physical & virtual) delivery

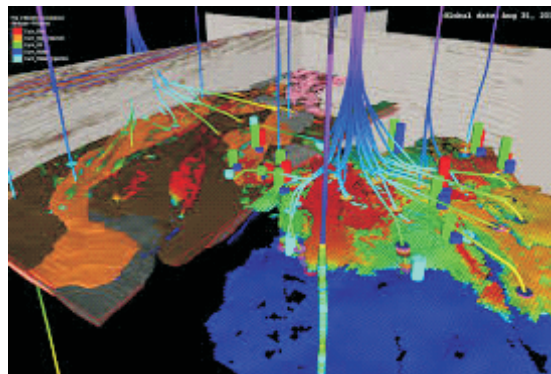


Subsurface Reservoir Studies

We provide comprehensive subsurface solutions, integrating geoscience, engineering, and economic analysis to support investment decisions.

Key Deliverables:

- Petrophysical Evaluation
- Static and dynamic modeling
- Hydrocarbon volumetrics and reserves estimation
- Field development planning (FDP)
- Well planning and optimization strategies

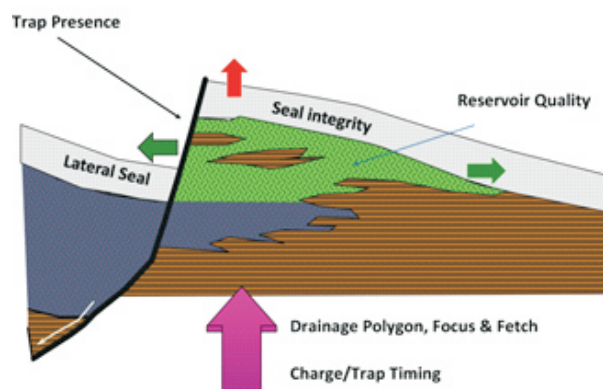


Prospect Evaluation & Risk Assessment Using AI

We support exploration and appraisal projects by reducing uncertainty and improving decision-making.

Services Include:

- Prospect ranking and volumetric analysis
- Geological and geophysical risk assessment
- Chance of success (COS) evaluation
- Economic screening and portfolio analysis

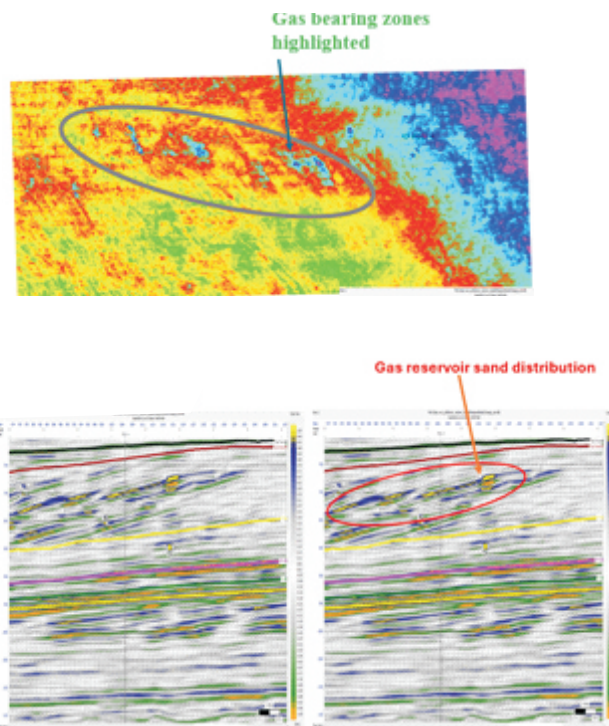


Seismic Interpretation & Advance Geophysics

We apply advanced seismic technologies to enhance reservoir characterization and fluid prediction.

Capabilities:

- 3D seismic interpretation
- Seismic attribute analysis
- Amplitude Versus Offset (AVO) analysis
- Deterministic seismic inversion
- Stochastic seismic inversion
- Rock physics modeling
- Reservoir characterization



Our Technical Approach

At Petvic Energies, we adopt a multidisciplinary and technology-driven approach:

1. Data gathering and quality control
2. Integrated subsurface evaluation
3. Advanced modeling and simulation
4. AI-driven analytics and optimization
5. Clear, actionable recommendations

Oil & Gas Equipment Supply

We supply high-quality equipment and tools to support upstream and midstream operations.

Supply Categories:

- Drilling and production equipment
- Well completion tools
- Flow assurance and monitoring equipment
- Safety and control systems
- Engineering and field instruments



Competitive Advantage

- Strong integration of geoscience, engineering, and AI technologies
- Expertise in advanced seismic interpretation and inversion techniques
- Practical, industry-focused training programs
- Data-driven solutions for improved decision-making
- Commitment to innovation and digital transformation

Commitment to Innovation

We are at the forefront of integrating Artificial Intelligence, Machine Learning, and Digital Energy solutions into traditional oil and gas workflows—helping clients transition into the

Clients



Contact Information Petvic Energies Integrated Solutions LTD

 Suite 3, DDS shopping Mall, KM 25, Airport Road,
Rukpokwu, Port Harcourt, Rivers State, Nigeria

 08134063049, 09122380917

 info@petvicenergies.com
onajite@petvicenergies.com

 www.petvicenergies.com