

Join Us in Building a Legacy of Faith

We are excited to share a vision that has been close to our hearts – a vision of growth, unity, and greater impact in our community and beyond. As we move forward in faith, our church is embarking on an expansion project that will enable us to better serve our congregation and the needs of the world around us. This is where you come in.

We are launching a **fundraising campaign** to raise the necessary funds for this important step in our church's future. We invite you to join us in this bold, collective effort as we seek to expand our space, enrich our ministries, and deepen our impact.



**New Lower Entry and Four New Classrooms*

Why is the Expansion Necessary?

Our church has been a beacon of hope, faith, and love for many years. However, our growing ministry demands more space and resources to effectively serve the needs of everyone.

Here are some of the areas that the expansion will address:

- **More Room for Gathering:** Our services and events are becoming more crowded, and we want to provide a comfortable space where everyone can gather to worship, learn, and grow.
- **Expanded Youth and Children's Ministries:** Our children's and youth programs are vital to the future of the church. We want to ensure they have sufficient space to learn and grow in faith and fellowship.
- **Community Outreach:** We envision creating more opportunities to reach out to our community through programs and services that meet both spiritual and practical needs.
- **Improved Accessibility:** Our growth also means ensuring that our church is accessible to everyone, regardless of their physical challenges.

The Vision for the Expansion

Our church expansion will include:

- **New Activity Center:** A welcoming space where we can build deeper connections as a church family through social events, meals, meetings, preschool events and community events.
- **Educational Facilities:** Classrooms and spaces dedicated to Bible studies, children's programs, youth activities, and adult education.
- **Enhanced Outreach Programs:** Facilities and resources for outreach to the broader community, with a focus on service, support, and missions.
- **Updated Facilities:** Improving the overall infrastructure to ensure the church remains a safe, inviting, and accessible place for all.



**New Upper Entry and Activity Center*

How You Can Be Part of This Vision

Your generosity will help turn this dream into reality. There are several ways you can contribute to the church's expansion project:

1. **Pledge Your Support** – Make a one-time donation or pledge to give over a period of time. Your sustained commitment will go a long way in helping us reach our goal.
2. **Monthly Giving** – Consider setting up a monthly donation to help support ongoing fundraising efforts.
3. **Corporate Matching** – Many employers match charitable donations. Ask your employer if they offer this opportunity to double your contribution.
4. **Special Gifts** – We also welcome special gifts in honor of loved ones, celebrations, or memorials.
5. **Volunteer Time** – In addition to financial contributions, your time and talents are invaluable to this project. There are many ways you can volunteer as we prepare for and carry out the expansion.



**New Activity Center*

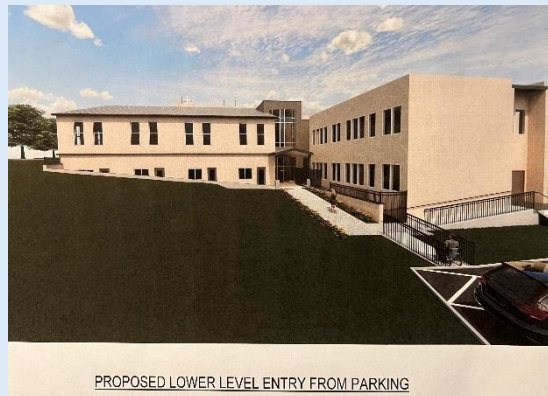
Our Goal and Timeline

We will start raising funds for this ambitious project by launching a pledge commitment campaign in the Fall 2025. We believe with your prayers, support, and participation, we can reach our goals to build.

The Impact of Your Gift

Every gift, no matter the size, will make an eternal impact. Your contribution is not just about building a physical structure but about building up the Kingdom of God. Through this expansion, we will be able to:

- Better Serve our congregation and community needs.
- Reach more individuals with the message of hope and love.
- Strengthen families and support those in need.
- Leave a lasting legacy for generations to come.



PROPOSED LOWER LEVEL ENTRY FROM PARKING

**New Lower Rear Entry*

**Images are representative of the minimum proposed expansion. Additional elements may be added contingent on funds raised and Congregation approval.*



**Covered Front Entry-Connecting Drive*

Building a Future, Together in Faith

We believe that God has called us to this moment. He has blessed us with an incredible church family and has entrusted us with the opportunity to make a lasting difference in our community and beyond. This expansion is not just about buildings; it's about expanding ministry and service opportunities to our children, our neighbors, and those yet to be reached.

We need you!

Together, we can make this vision a reality. As we step forward in faith, we trust that God will guide us, provide for us, and multiply our efforts for His glory. Please join us in making this vision a reality. Thank you for your continued financial and prayerful support, and commitment to our shared mission.

In Christ's Love,

St. Luke Lutheran Church
Expansion Committee



20 Candlewood Path
Dix Hills, NY 11746
631-499-8656

www.stlukedixhills.org