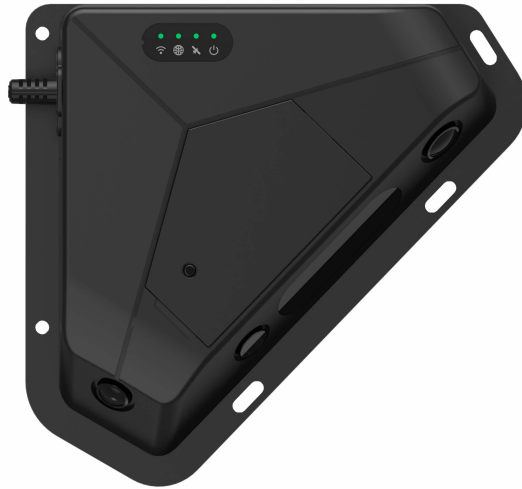


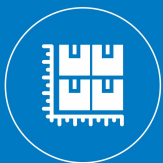
## Cargo Monitoring Camera



### Product Overview

The Z5 Cargo Monitoring Camera is an advanced solution using two AI cameras and to deliver superior cargo visibility in any lighting conditions, surpassing traditional sensors. It provides real-time cargo volume perception, ensuring full visibility of goods and constant awareness of loading rates. Integrated with door sensors, the Z5 offers real-time data on the open or closed status of trailer or container doors. With event-driven and historical data, it enables fleet managers to improve tracking, optimize loading efficiency, and streamline operations.

### Product Highlight



#### Precision Volume Measurement

Accurately monitor the real-time volume inside the cargo box with full coverage for optimal space utilization.



#### Integrated GPS Tracker

Operates as a standalone GPS tracker, delivering precise location data to safeguard cargo, with up to 120 days of continuous tracking capability.



#### Lightning-Fast Device Start-Up

The device features a rapid startup time of 1 second, eliminating wait times and ensuring seamless operation.



#### High-Definition Panoramic Camera

Equipped with a high-definition dual-camera specifically designed for cargo box, offering clear and comprehensive visuals.



#### Exceptional Expansion Capability

Versatile expansion capability enables seamless integration of multiple cargo security systems, effectively addressing diverse industry needs and improving management experiences.

E-mark



CE



FCC



PTCRB



ROHS



REACH



GCF



## Comprehensive Cargo Coverage

With full cargo visibility and zero blind spots, the system activates instantly as the cargo door opens, capturing every moment to ensure maximum security.



## Digital Cargo Management

Transform enclosed cargo spaces into transparent digital containers with real-time monitoring and data analytics, boosting truck utilization and efficiency while significantly reducing vacancy rates.

## Compact Standalone European Standard Unit(BSIS+MOIS)

