



Mineral & Natural Resources Supply and Management

Mining the Past, Powering the Future.



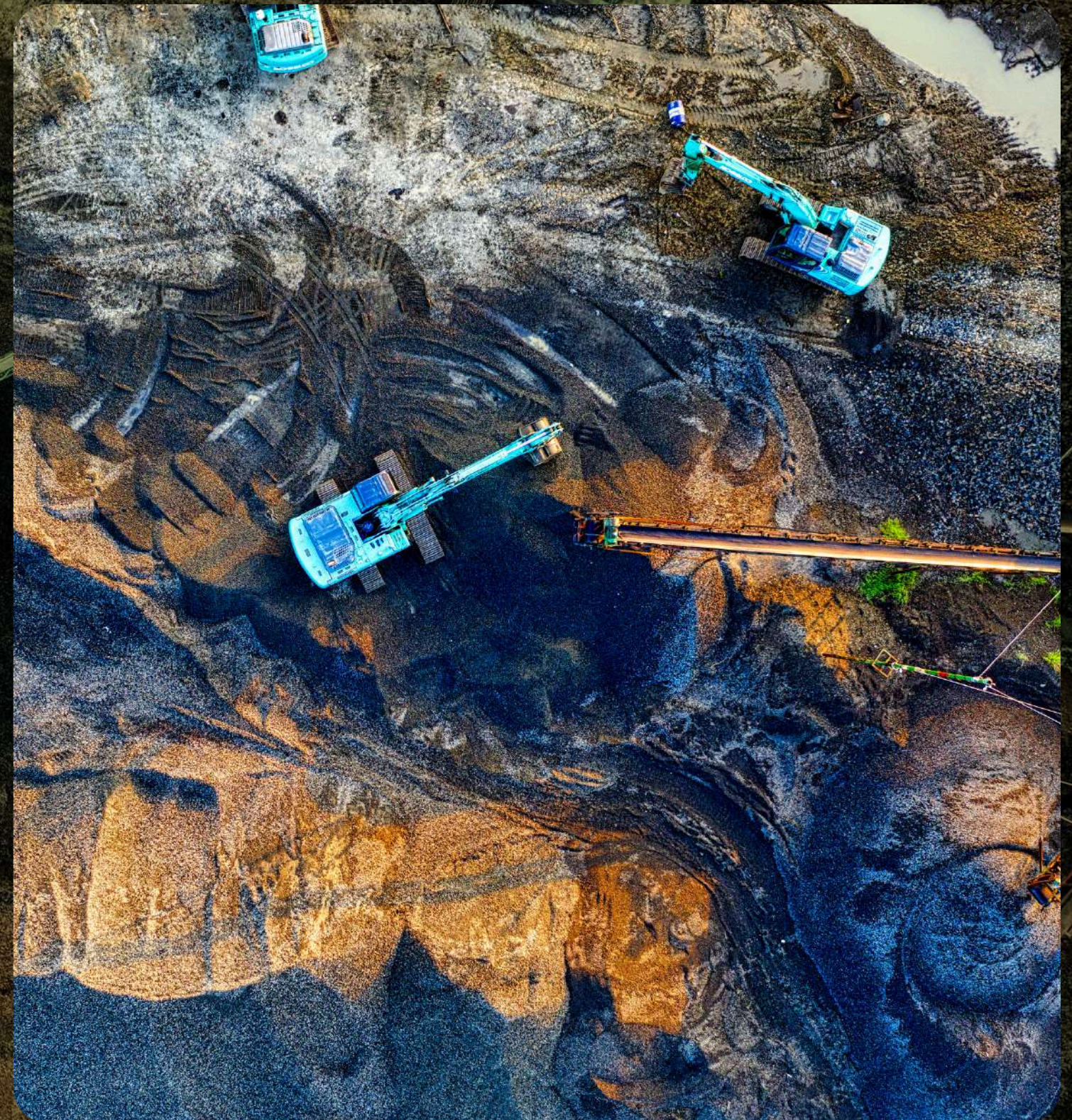


Copper Cathode Premium DRC Origin



Our Mining Operations

- Core Business: End-to-end logistics for copper cathodes/concentrate
- Operational Region: DRC Corridor → Dar es Salaam ports
- Key Product: High-grade copper cathodes from Kamo-a-Kakula Mine (DRC)
- Competitive Edge:
 - 15+ years of mining logistics expertise
 - Asset-based operations with real-time decision making
 - Integrated solutions from mine to port





Inland Transportation

Secure Overland Logistics

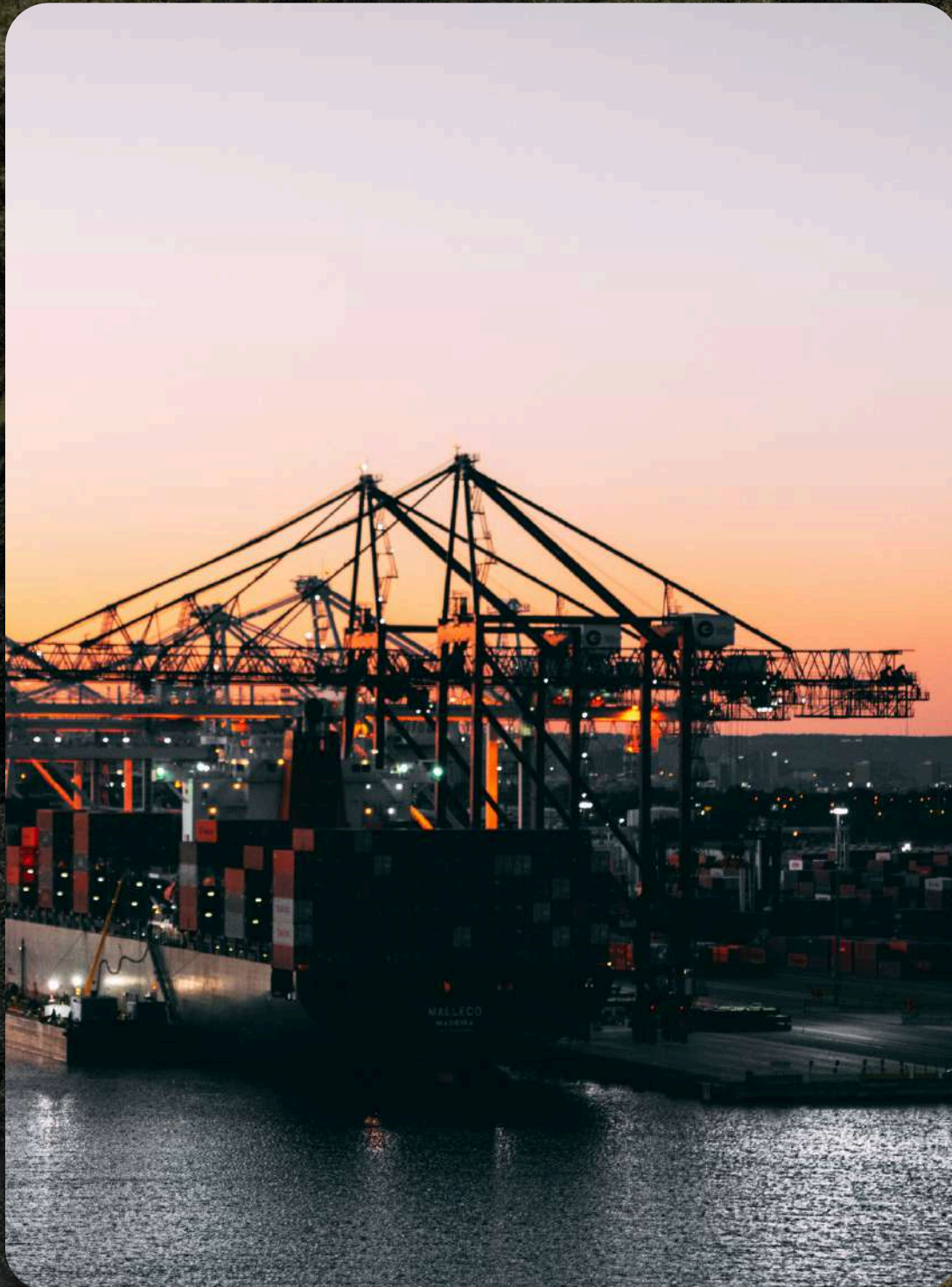
- Route: Kolwezi (DRC) → Dar es Salaam Port (2,466 km)

Key Protocols:

- Convoy System: 30–40 trucks per shipment
- Armed Escorts: Mandatory in high-risk zones
- No-Night Driving: Approved secure parking only
- Capacity: 1,200 tons minimum (40 trucks × 30 tons)

Tracking:

- Real-time GPS monitoring
- 24/7 human surveillance (4+ daily driver check-ins)





Challenge & Solution

Challenge	Our Solution
Theft/Hijacking	30-truck convoys + armed escorts
Border Delays	Proactive clearance teams
Cargo Loss at Parking	Zero tolerance policy + approved stops only
Remote Terrain Navigation	Specialist drivers + emergency training
Documentation Risks	Payment guarantees + original docs held until delivery





Product Offering: Copper Cathode

Cu-ATH-1 (99.99% Cu)

1. Product:	• Copper Cathode Cu-ATH-1 (99.99% Cu)
2. Origin:	• Democratic Republic of Congo (DRC)
3. Quality Certification:	• Purity: 99.99% Cu (Verified by OCC/Katanga Provincial Directorate). • Impurities within industry standards (e.g., Fe: 1.8%, S: 2.2%, Bi: 2.4%).
4. Pricing:	• LME Monthly Average with discount (Negotiable)
5. Loading Port:	• Dar es Salaam, Tanzania
6. Incoterm:	• FOB/CIF (Destination port negotiable)
7. Minimum Order:	• 1,200 MT (Lot size: 12,000 MT / Monthly available).
8. Payment:	• Sight LC (irrevocable; divisible/transferable)
9. Inspections Q&Q:	• SGS at load port



WHY US ?

- » End-to-End Expertise – From mine to port, we handle every step with precision.
- » Unmatched Security – Convoys, armed escorts, and 24/7 tracking ensure cargo safety.
- » Cost-Effective & Transparent – Competitive rates with full financial visibility.
- » We deliver efficiency, security, and profitability for your copper supply chain, backed by:
 - Real-time tracking & cloud-based warehouse management
 - Strategic partnerships
 - Seamless customs clearance & port operations



Get In Touch

VSHEN CAPITAL SDN BHD

NO. 7-1F, PINGGIRAN MUTIARA UTAMA KM11
JALAN GOMBAK, TAMAN MUTIARA GOMBAK
53100 KUALA LUMPUR W.P. MALAYSIA

www.vshencapital.com

info@vshencapital.com

+603-56264449



LOCAL PARTNER

SNG LOGISTICS LIMITED



SNG HOUSE, BLOCK 15322/19, SIMEON ROAD
ARUSHA, TANZANIA

COPPER MINES

KAMOA-KAKULA COPPER MINE



MUTSHATSHA, PROVINCE OF LUALABA
DEMOCRATIC REPUBLIC OF THE CONGO

Thank You

Join Us in Building a Sustainable Future in Mining