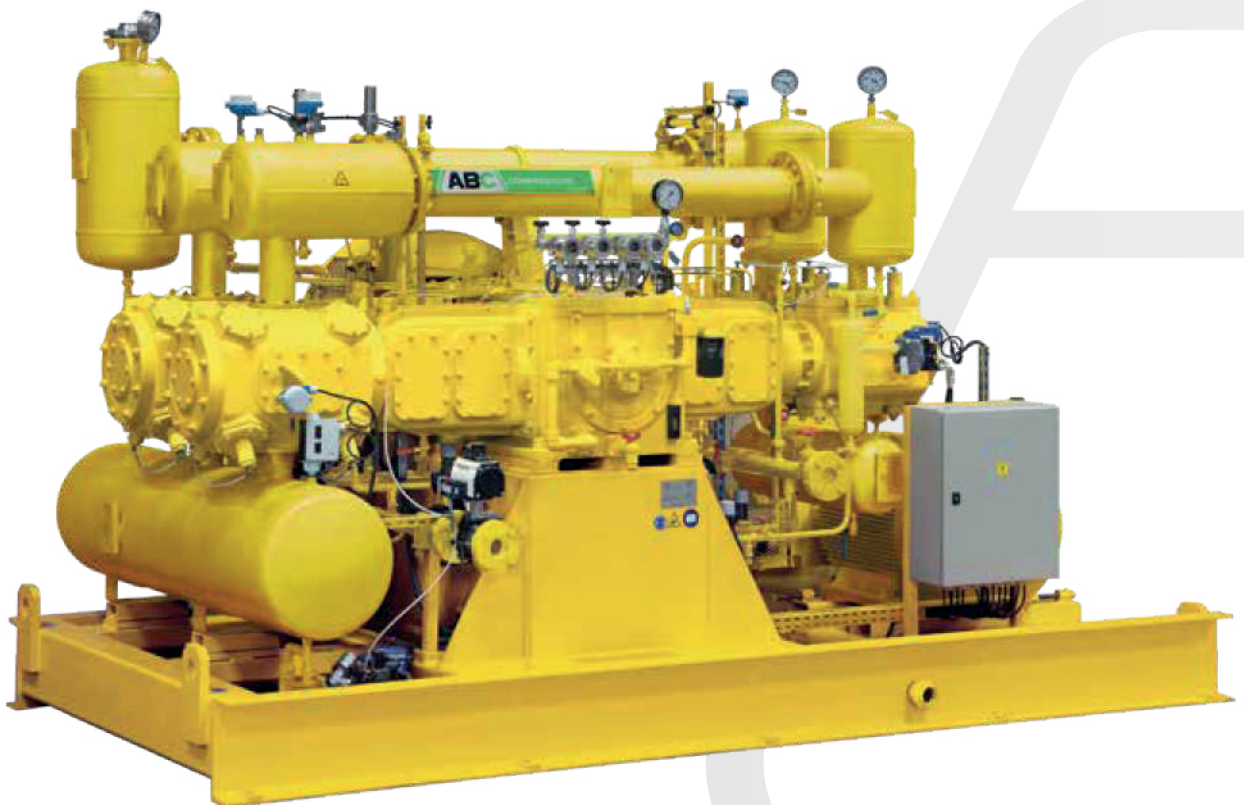


CO₂ COMPRESSORS

CO₂



EN

RELIABLE BEYOND LIMITS



ABC IN CO₂ INDUSTRY

Since the early 70's, ABC manufactures a wide range of CO₂ compressors: from the CO₂ recovery for breweries, to a variety of applications for gas producers. In close cooperation with engineering companies, ABC compressors are customized according to the project requirements, delivering complete units: compressor and electric cabinet on skid or bare compressors to be packaged by the engineering company responsible for the turn-key system.

CONFIGURATION

Piston compressors with up to 3 pairs of double-acting cylinders, with or without lubrication. Up to 6 stages of compression, mounted on a structural steel skid.

GASES

Air, Hydrogen, Nitrogen, Methane, Carbon dioxide, Freon, Natural Gas, Vinyl chloride, Methyl chloride, Ethylene, Propylene, Sulphur dioxide, Butadiene, Isobutene, Isobutane, Butane, Propane, Carbon monoxide, Synthesis gas, Biogas and Syngas... except for Oxygen and Acetylene.

POWER

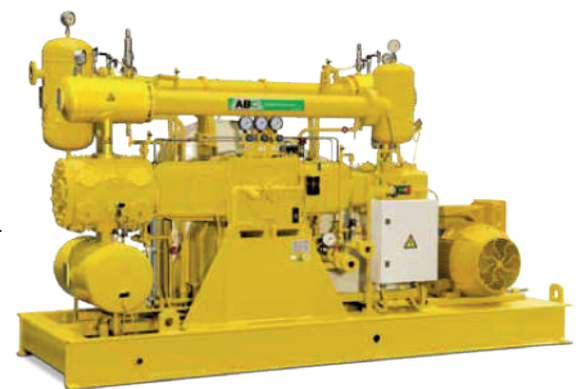
Up to 1.200 kW

PREASSURE

Up to 150 bar

EFFICIENT DESIGN

- Cylinders are horizontally opposed, with crankpins displaced by 180°, cancelling out the inertia loads.
- Virtually without vibrations.
- Longer life of mechanical parts as they do not transmit excessive force or produce fatigue on structural parts of the compressor, 20 years machine lifetime.
- No anti-vibration pads or special foundations are required, +2kg/cm².
- Excellent adaptation to frequency converter up to 55%.
- Double acting.
- Refrigeration / Inter and final coolers.

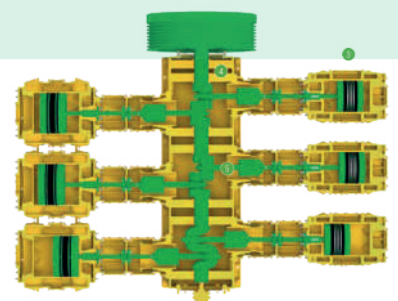


▲ eCOO

MODULAR DESIGN

100% INTERCHANGEABLE PARTS

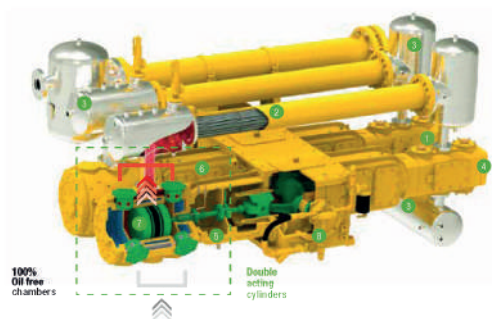
ABC CO₂ compressors are designed using interchangeable cylinders. Thanks to that, ABC compressors share the same spare parts, allowing a cost effective and easy maintenance.



OIL FREE AND CORROSION PROOF

ABC compressors are totally oil free thanks to long blocks between casing and cylinders: cylinder side chamber is large enough to avoid the piston rod part in contact with the mechanical elements could get in contact with the packing. An oil thrower at the rod avoids the oil to advance along the piston rod.

CO₂ range is prepared to compress saturated gas. The gas circuit, condensates separators and heat exchangers are in stainless steel, avoiding corrosions and providing longer life to parts.



- Stainless steel valves.
- Inter and after coolers: stainless steel bundles, dilatable, demountable.
- Stainless steel separators, dampeners as option.
- Cylinders with thermostatic valves.
- B-type distance piece assuring completely OIL FREE compression.
- CO₂ venting for packings and distance blocks.
- Aluminium pistons.
- Shaft driven oil pump.

REGULATION

0-50-100% STEP REGULATION
provides half of the nominal flow.

- Thanks to the all double acting cylinders.
- By using either gas or air.
- Remarkable energy consumption adjustment.
- 0-25-50-100% regulation possibility.
- Flip-flop operation option.

VARIABLE SPEED DRIVE, VSD provides continuous flow adjustment

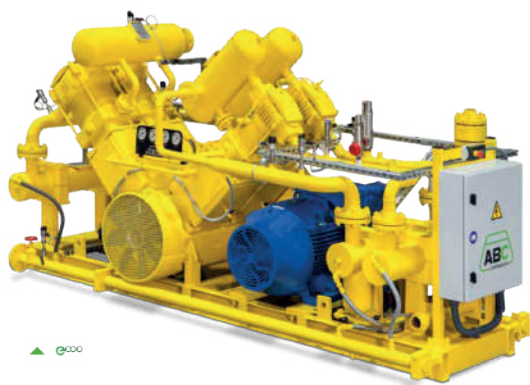
- Avoids the starting intensity peaks.
- Perfect energy consumption adjustment.
- Reduces the CO₂ balloon size requirements.
- ABC compressors take full advantage of the VSD, as the rotational speed can be reduced to half.

Operation with VSD provides double benefit:

Optimizing the energy consumption when the compressor is not at its full capacity while improving the mechanical and electrical working conditions. It can be retrofitted at a later date.

COMPACT SOLUTIONS

Compressors sets specifically developed for smaller flows installations, producing up to 600 kg/h.



- Cost aware conception.
- Requires reduced footprint, suitable for being integrated in self contained packages.
- Compact and simple to be interconnected.
- High energy efficiency.
- V-type cylinders arrangement.
- Single acting operation.
- Three compression stages for better performance and low temperature operation.
- Either air or water cooled inter and after coolers.
- 0-100% regulation.
- Large passage surface valves.
- Gas and lubricating circuits in stainless steel.

DRY ICE



BREWERY



BIOGAS PLANT



BIOETHANOL



TECHNICAL DATA

CO₂ Compressors technical data

	FLOW	MOTOR		CYLINDERS	STAGES	FRAME
	kg/h	kW	Hp	mm		
ECO^o 19X	170	19	25	220-120	2	ECO ^o - 2X2
ECO^o 22X	180	22	30	220-120	2	ECO ^o - 2X2
ECO^o 30X	250	30	40	220-120	2	ECO ^o - 2X4
ECO^o 37X	300	37	50	220-120	2	ECO ^o - 2X4
ECO^o 45X	450	45	60	245-170-120	3	ECO ^o - 3X4
ECO^o 55X	550	55	75	245-170-120	3	ECO ^o - 3X4
ECO^o 75X	600	75	100	245-170-120	3	ECO ^o - 3X4
ECO^o 75A	800	75	100	320-160	2	ECO ^o HA 2
ECO^o 90A	1000	90	125	320-160	2	ECO ^o HA 2
ECO^o 110A	1300	110	150	320-160	2	ECO ^o HA 2
ECO^o 132A	1400	132	180	320-160	2	ECO ^o HA 2
ECO^o 160A	1700	160	220	320-160	2	ECO ^o HA 2
ECO^o 132B	1500	132	180	320-160	2	ECO ^o HA 4
ECO^o 160B	1800	160	220	320-160	2	ECO ^o HA 4
ECO^o 200B	2100	200	270	320-160	2	ECO ^o HA 4
ECO^o 250B	2500	250	340	320-160	2	ECO ^o HA 4
ECO^o 280B	3000	280	380	320-160	2	ECO ^o HA 4
ECO^o 250C	2900	250	340	320-160	2	ECO ^o HA 6
ECO^o 280C	3100	280	380	320-160	2	ECO ^o HA 6
ECO^o 315C	3600	315	425	320-160	2	ECO ^o HA 6
ECO^o 355C	3800	355	480	320-160	2	ECO ^o HA 6
ECO^o 400C	4000	400	545	320-160	2	ECO ^o HA 6
ECO^o 450C	5000	450	610	320-160	2	ECO ^o HA 6

GLOBAL SERVICE NETWORK

Ask more information about **CO₂ COMPRESSORS** to our sales department: abc@abc-compressors.com

NORTH AMERICA

+10 branches **USA**
Ontario **CANADA**
Mexico City **MEXICO**

CARIBBEAN

La Habana **CUBA**

SOUTH AMERICA

Caracas **VENEZUELA**
Lima **PERU**
Guayaquil **ECUADOR**
Itupeva **BRAZIL**
Santiago de Chile **CHILE**
Buenos Aires **ARGENTINA**
Bogotá **COLOMBIA**

EUROPE

9 branches **SPAIN**
9 branches **FRANCE**
Hamburg **GERMANY**
Amsterdam **NETHERLANDS**
Beograd **SERBIA**
Kiev **UKRAINE**
Vajta **HUNGARY**
Sofia **BULGARIA**
Bucharest **ROMANIA**
Zagreb **CROATIA**
Moscow **RUSSIA**
Istanbul **TURKEY**

ASIA

Lahore & Karachi **PAKISTAN**
Jeddah **SAUDI ARABIA**
Teheran **IRAN**
Dubai **UAE**
Pune **INDIA**
Tokyo **JAPAN**
Shanghai-Wujiang **CHINA**
Ho Chi Minh **VIETNAM**
Manila **PHILIPPINES**
Jakarta **INDONESIA**
Seul **SOUTH KOREA**
Dhaka **BANGLADESH**
Taipei **TAIWAN**
Yangon **MYANMAR**
Bangkok **THAILAND**
Kuala Lumpur **MALAYSIA**

AFRICA

Addis Ababa **ETHIOPIA**
Nairobi **KENYA**
Kampala **UGANDA**
Tunisia **TUNISIA**
Accra **GHANA**
Lagos **NIGERIA**
Johannesburgo & Cape Town **SOUTH AFRICA**
Casablanca **MOROCCO**
Walvis Bay **NAMIBIA**
Algiers **ALGERIA**



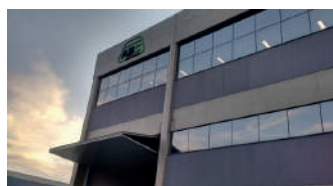
HEADQUARTERS

Eibar
Pol. Ind. Azitain nº6
20600 EIBAR (Guipúzcoa) SPAIN
T.: +34 943 820 400
abc@abc-compressors.com
www.abc-compressors.com



ASSEMBLY PLANT

Wujiang City Jiangsu
No. 399 West Ganquan Road
Economic Development Zone
P.R.C., 215200
+86 512 828 76228
abc-china@abc-compressors.com



ASSEMBLY PLANT

Itupeva
Rodovia akzo nobel 2115
Rio Abaixo Itupeva - SP 13295-000 Brasil
P.R.C., 215200
+55 11 44964434
abc-brasil@abc-compressors.com.br



+34 673 056 281



ISO 9001 · ISO 14001 · ISO 45001



RELIABLE BEYOND LIMITS