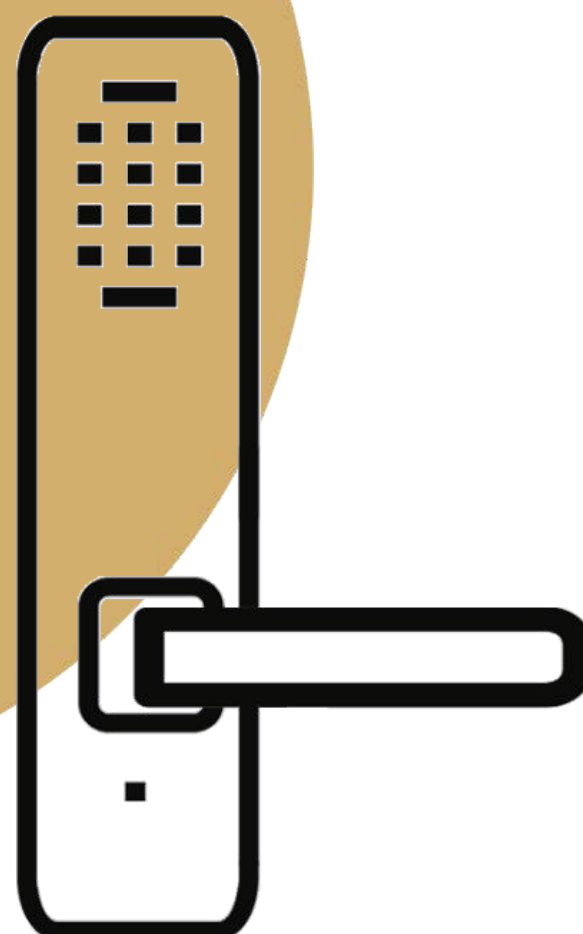




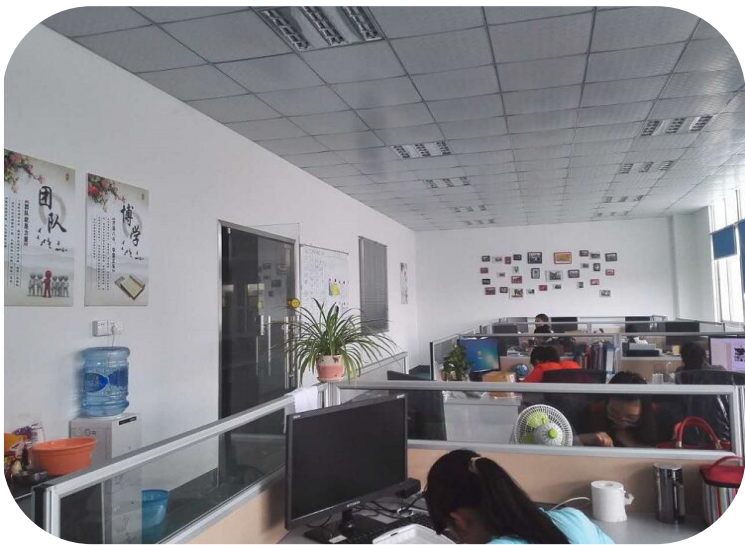
**Bring a Smart Life**

- ◆ **Hotel Door Lock**
- ◆ **Bluetooth Door Lock**
- ◆ **Mobile Operated Hotel Lock**
- ◆ **LORA Wireless Door Lock**
- ◆ **RFID Smart Cabinet Lock**
- ◆ **Hotel Door Accessories**
- ◆ **Hotel Door Bell**
- ◆ **Lift Control Reader System**



We Will Focus on Goba Market

Our main market except our domestic , goba market facous on India, Middle East, Southeast Asia, East European, Africa, and South American .



SMT Product Line

Surface Mount Technology and craftsmanship can reduce the volume area, improve production efficiency, improve product quality, and improve product consistency.



CNC Machine

Our some products using CNC precision carving process, sandblasting oxidation process treatment have resistance, oxidation resistance, scratch resistance and corrosion resistance, and not easy to be moisted can make the smart locks as long as new .





# Production Line



## Injection Machine

Can reduce labor force and product costs, ensure process safety, increase labor productivity, and improve product quality .

## Die Casting Machine

All of the zinc alloy material need use them for make lock mode first . There are differenet weight of machine to meet different request of room lock and cabinet lock .



## Smart Cabinet Lock Product Line

We the custom made rfid cabinet lock for you , included the front lock print logo and number , wristband key print logo and number name . Usually the delivery time be 1-2 days . If need we design and make your own design model, contact with us feel free .

## Mortise Lock Assemble Product Line

Assemble mortise lock ,.



## The whole Lock Assemble Product Line

In this step to assemble the lock handle . this is the final step for the lock assemble .

## The Whole Lock Test Line

The hotel lock and fingerprint lock after assembled handle and pcb , will test the whole lock working normal then pack .





# Quality Control Process

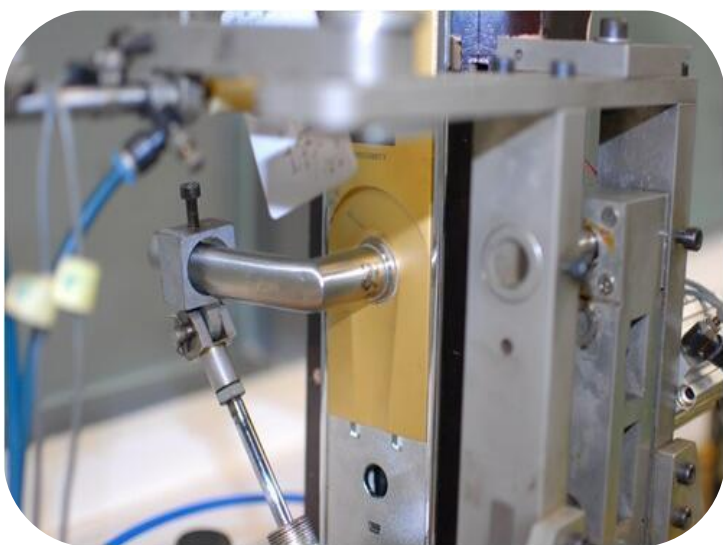


## Card Switch Lifetime Test

Will test the engery saving switch working in 24 hours continuous test under wide range from 65--260V. the woring current capacity is 40 AMP .

## PCB Test

After the PCB assembled ,soldered and electronic parts , will test if there are some place didn't weld to make sure the pcb are working normal .



## Mortise Lock Anti-violence Test

Anti-drill, anti-pry, anti-saw, anti-interference of high frequency current. the door locks need have the ability to prevent violent unlocking .

## Salt-Spray High and Low Temperature Test

For test the lock surface treatment appearance rust level . to make sure the smart lock surface can't be rust and last for 96 hours from -10 to 55 °C. it will last for a long time to avoid rusting awkward and troubles for your door lock .

Temperature test the PCB board to ensure it can use under hot and cold temperature condition, so that the lock can applicate in different worldwide place for the hot area middle east and cold area Russia etc .



## Lock Handle Trun Span Test

Test handle turn running is most important , which can test the related parts quality , included the electronic parts and hardware parts such as handle, spring , the mortise lock etc .

## Cabinet Lock Body Assmble and Test

Cabinet lock install mortor and pcb , and test the using time

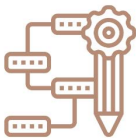


# Hotel Lock



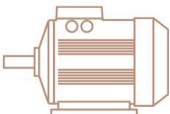
Name	Unit	Qty	Remarks
Door Lock	Set	A certain number	one room need one, need inform us the quantity of left and right handle
Card Enocder	Set	2	1 use for frontdesk, 1 for backup
Contactless Card	Pcs	A certain number	For open door, can perpare of 3-5 times based on the rooms , card can print hotel name, LOGO, Tel, and Address, Instructions etc
Door Lock System	Set	1	Free offer . For program different function cards , and check ,calculate etc easy operation .
Card Switch	Set	A certain number	One room need one , customer insert card for gain power and take away card to cut off power
Data Collectror	Pcs	1	Use for collect the open door histroy to get know the room unlock and lock situation .
Hotel Door Bell （Optional）	Set	A certain number	Hotel door bell,work with inside room card switch and jungle

## Hotel Locking System Features



### Classical Design

Our lock design by Taiwan designer , which with simple but genrous apperance. Most of them are classical model , which are popular by most domestic and oversea customers .



### High Quality Motor

Adopt Taiwan high quality motor and has a long life of 300000 times can unlock 30 times per day that the lock can use for 10 years .



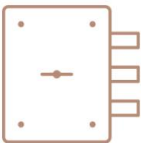
### High Quality Metal Material

All locks adopt high quality zinc alloy or SUS stainless steel material , and with new technology electricplaint to make sure the lock didn't fadeless easily . The lock can use for



### Automatically Locked

Read room card to unlock the door , it will automatically locked with 7 seconeds . The lock didn't closed the door , it will sound alarm to notice closed door right way .



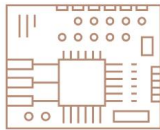
### High Quality Mortise Lock

The main parts of mortise lock adopt 304 stainless steel material to make sure the lock long time usage , the mortise lock can turn left and right handle easily .



### Unlock Records

The system can record the recently 420 pcs unlocking history in case audit trail use .



### Main PCB Parts

The PCB make by fully aotumatic STM machine and full computer test ,which can guarantee the products with high quality .



### Low Voltage Alarm

when the voltage low than 4.8V, the lock will sound “di””di”...to notice change new battery , the lock can unlock 100 times under low voltage .

## Technical Data

Specification	Voltage	4 pcs AA alkaline battery offer 6V voltage	Battery life	12 months /100000 times
	Unlock way	Contactless card /Mechanical key	Adopt card	EM4100/T5577/Mifare 1
	Material	304 SUS or zinc alloy , Aluminium	Static Current	≤20uA
	Working Temperature	-20℃~60℃	Dync Current	≤150mA
	Working Humidity	20%-95%RH	Door Thickness	38-70mm
	Alarm voltage	4.8V±0.2V	Application	hotel , apartment, office, hospital ,factory etc



New Arrival

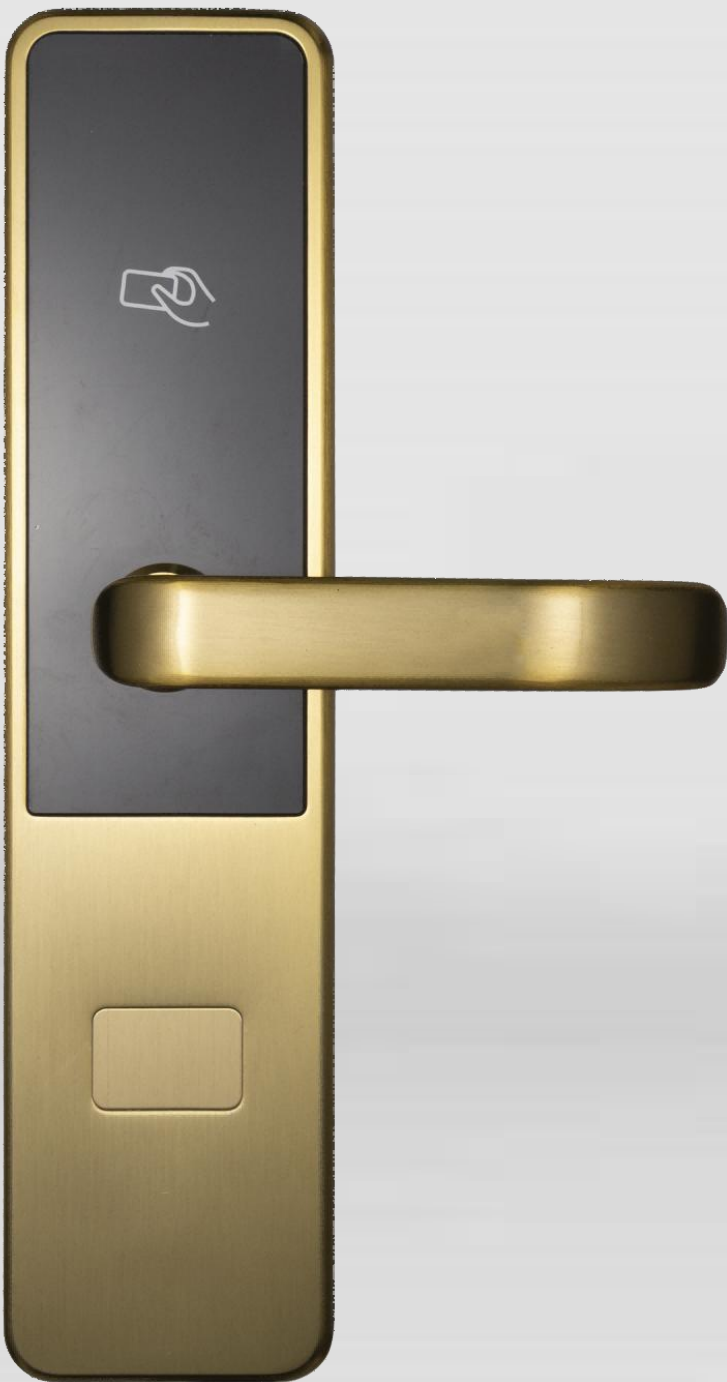


GK28D-1



GK35

GK36S







GK7



GK8











GK-F10





## Mortise Lock Hotel Lock



Model: GK-6

Color: Silver, Black

Material: 304 SUS

Mortise plate size: 22\*160

Other size can custom made



Model: GK-1

Color: Silver, Black

Material: 304 SUS

Mortise plate size: 22\*160

Other size can custom made



Model: GK-2

Color: Silver, Black

Material: Aluminum

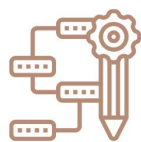
Motise plate size: 22\*160

Other size can custom made

Front panel size: 64\*74\*25 mm

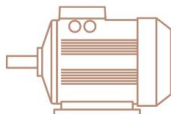
APP Function Introduce			
Guest side App	Unlock room door		
	Use Evelator		
Hotel side App	Device manage	Hotel door lock	
		Gateway	
		Evelator	
	Check hotel running data		
Computer side Software	Senging passwod/Add fingerprint		
	Issue cards	Front dest issue cards	Issue room cards, check in room cards/renew room cards
			Issue ekeys/passwords
		Background issue cards	Issue floor cards
			Issue building cards
			Issue master cards
	Management	Public door group management	
		Device management	Card encoder
			Online hotel lock
			Energy saving switch
			Evelator control system
	Checking	Evelator working status	
		Energy saving switch working status	
		Room unlocking records and gain power records	
	Others	Support one guest living multi rooms	
		Language support English, French	

## Hotel Locking System Features



### Classical Design

Our lock design by Taiwan designer , which with simple but genrous apperance. Most of them are classical model , which are popular by most domestic and oversea customers .



### High Quality Motor

Adopt Taiwan high quality motor and has a long life of 300000 times can unlock 30 times per day that the lock can use for 10 years .



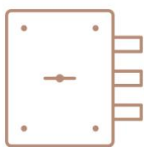
### High Quality Metal Material

All locks adopt high quality zinc alloy or SUS stainless steel material , and with new technology electricplaint to make sure the lock didn't fadeless easily . The lock can use for



### Automatically Locked

Read room card to unlock the door , it will automatically locked with 7 seconeds . The lock didn't closed the door , it will sound alarm to notice closed door right way .



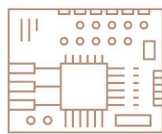
### High Quality Mortise Lock

The main parts of mortise lock adopt 304 stainless steel material to make sure the lock long time usage , the mortise lock can turn left and right handle easily .



### Unlock Records

The system can record the recently 420 pcs unlocking history in case audit trail use .



### Main PCB Parts

The PCB make by fully aotumatic STM machine and full computer test ,which can guarantee the products with high quality .



### Low Voltage Alarm

when the voltage low than 4.8V, the lock will sound "di""di"...to notice change new battery , the lock can unlock 100 times under low voltage .



01

### Card Encoder

For program different function card keys to manage the hotel /apartment.

02

### Gateway

Gateway isn't the necceessories device , when work with it can unlock by remote .

03

### Energy Saving Switch

Can choose the card switch work 3 mode: work with any card,with hotel room card , work with valid room card.



**ww.GUESTkee.com**

**email: [hello@guestkee.com](mailto:hello@guestkee.com)**