

±11,600 SF FOR SALE OR LEASE | RICHEY BUSINESS PARK

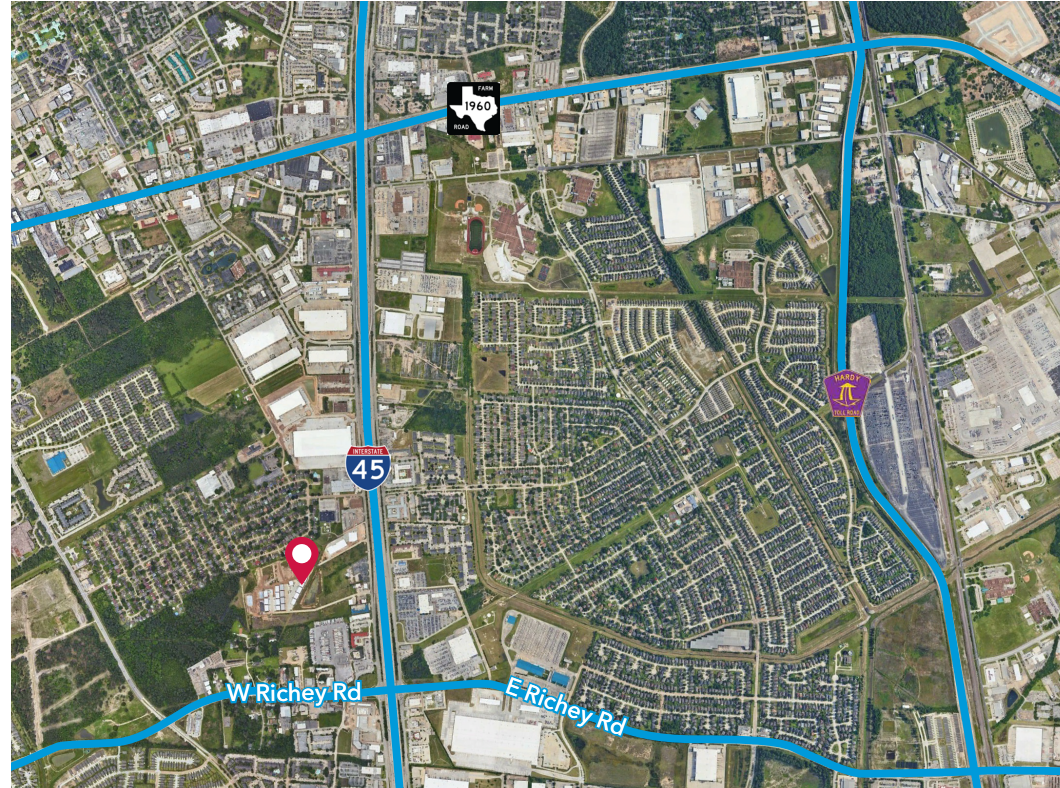
0 NORTH FREEWAY (BUILDING 23), HOUSTON, TX 77090



LEE & ASSOCIATES
10497 Town and Country Way | Suite 700 | Houston, TX 77024
713.744.7400 | lee-associates.com/Houston

FELIPE RODRIGUEZ | Associate
frodriguez@lee-associates.com
D 832.482.7052

CHASE TAYLOR | Associate
chase.taylor@lee-associates.com
D 713.744.7464



RICHEY BUSINESS PARK | BUILDING 23

ONE FREESTANDING BUILDING FOR LEASE

PROPERTY OVERVIEW

Total Building SF:	±11,600 SF
Divisible :	±5,800
Land Size:	±0.97 AC
Eave Height:	20'-24'
Year Built:	2025
Construction:	Metal

Loading:	Four (4) 14'x14' grade-level doors
Utilities:	Harris County MUD 189
Power:	3-phase / 208 volts
Location:	Easy access to I-45

LEASE RATE

CALL FOR INFORMATION

SALE PRICE

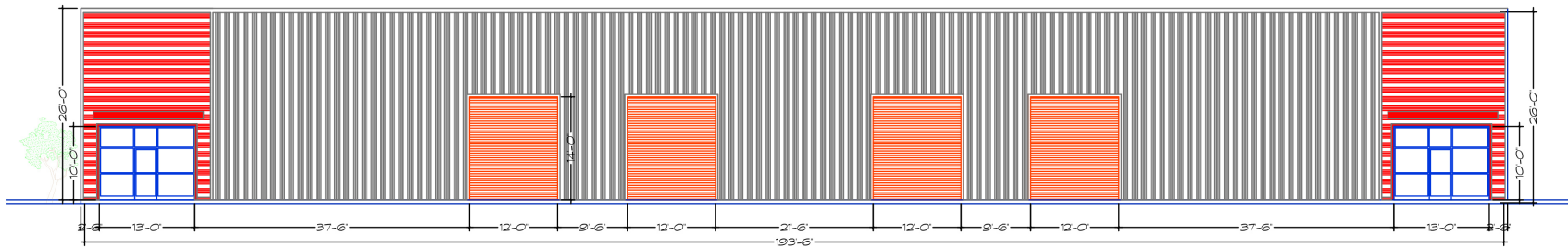
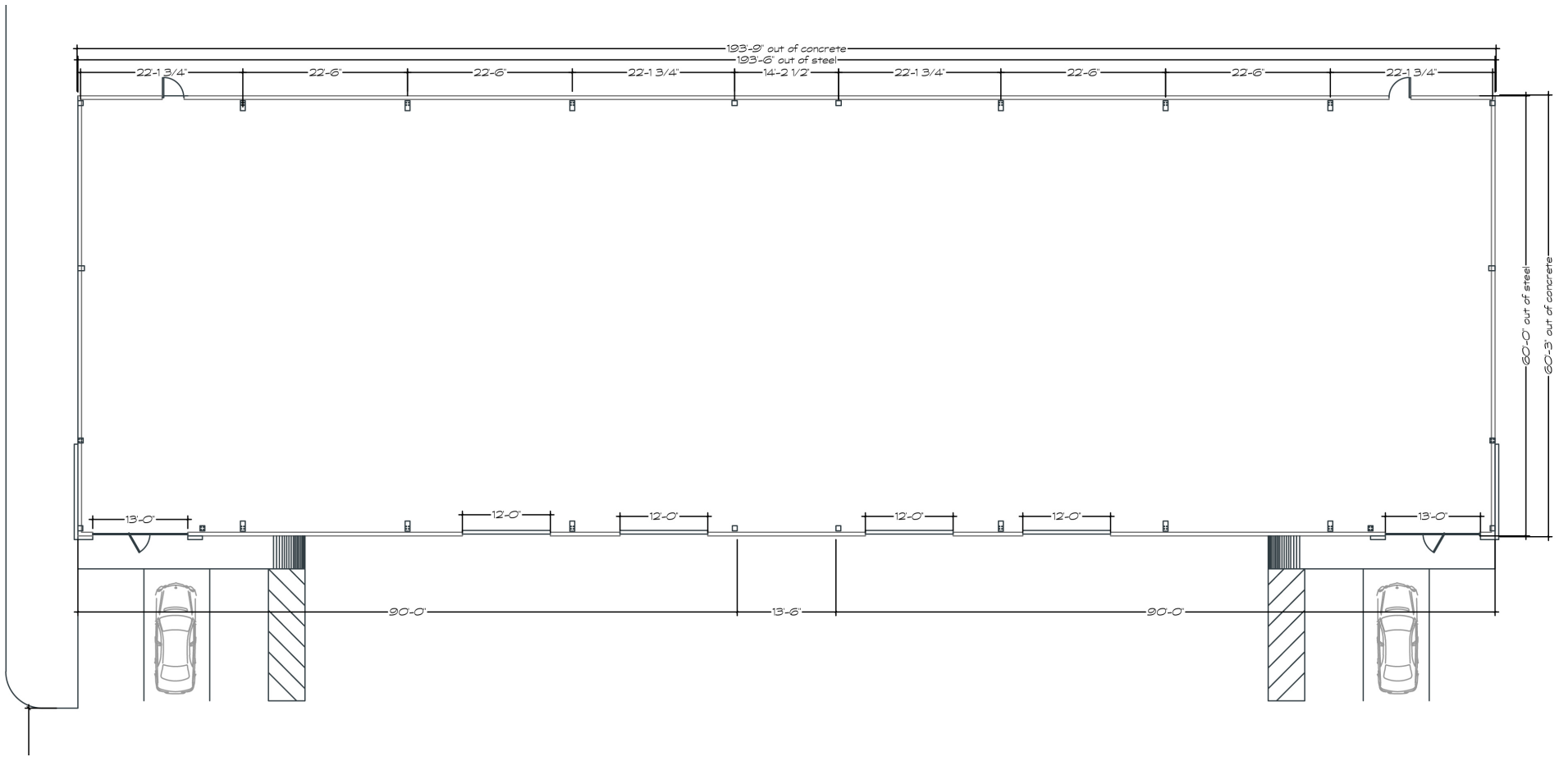
CALL FOR INFORMATION



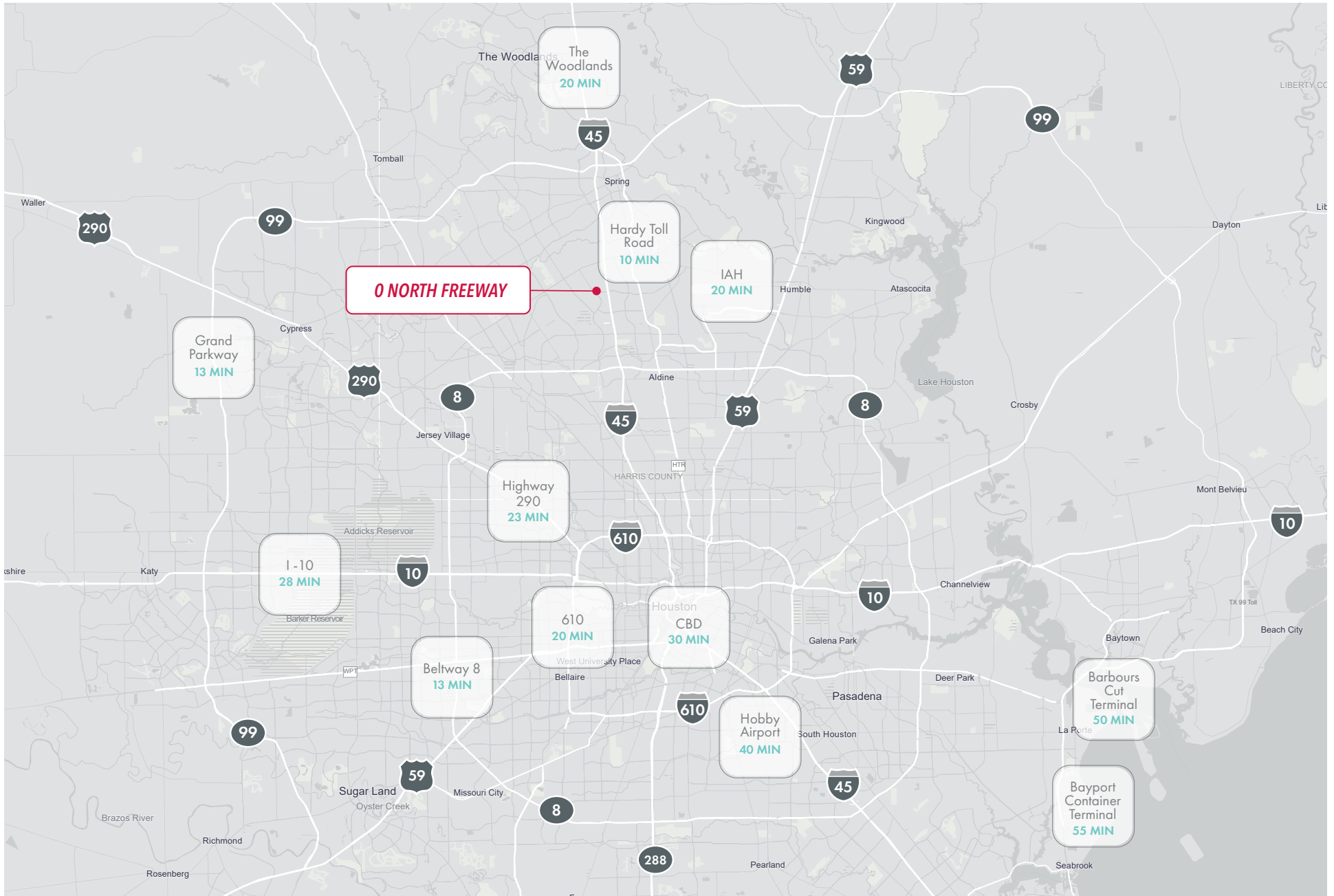
Building 23

INTERSTATE 45

SITE PLAN



FLOOR PLAN



DRIVING TIMES MAP

FELIPE RODRIGUEZ | Associate
frodriguez@lee-associates.com
D 832.482.7052

CHASE TAYLOR | Associate
chase.taylor@lee-associates.com
D 713.744.7464



713.744.7400
lee-associates.com/Houston
10497 Town and Country Way | Suite 700
Houston, TX 77024

The information and details contained herein have been obtained from third-party sources believed to be reliable, however, Lee & Associates has not independently verified its accuracy. Lee & Associates makes no representations, guarantees, or express or implied warranties of any kind regarding the accuracy or completeness of the information and details provided herein, including but not limited to, the implied warranty of suitability and fitness for a particular purpose. Interested parties should perform their own due diligence regarding the accuracy of the information. The information provided herein, including any sale or lease terms, is being provided subject to errors, omissions, changes of price or conditions, prior sale or lease, and withdrawal without notice. Third-party data sources: CoStar Group, Inc. and Lee Proprietary Data.
© Copyright 2025 Lee & Associates all rights reserved.