

product catalogue

IS : 6315

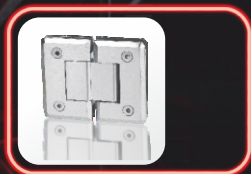


CM/L8361173

IS : 3564



CM/L8442779



Architectural Hardware



Quality with Trust

Since 1990



Quality with Trust

The background of the advertisement features two hands, palms up, holding a glowing globe. The globe is covered in a white world map and is surrounded by a blue, ethereal glow with sparkling light effects. The hands are positioned symmetrically on either side of the globe, which is centered in the upper half of the image.

We adhere to stringent business style Since 1990. We are devoted to R&D and production of high quality architectural hardware. Bringing the latest trend technologies and concepts to modern life with strong International design concepts, unique technical and manufacturing processes which results in trendy and efficient architectural hardware that can be seen anywhere in life. With the quality, management, services and development we have been striving for innovation, constant improvement and perfection in the severe market competition. Relying on advanced technical facilities and perfect quality management system we have made finest products based on innovation in function and excellent practicality. We are dedicated and diligent. Looking into future, we will continue to take market as guide introducing new technologies and developing new products and also focusing in concrete way on after sales services.

Door Closer



Quality with Trust



▲ SM - Pelmet Arm



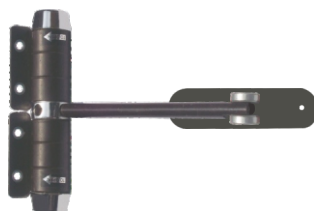
▲ SM-Concealed



▲ SM-Suzo



▲ SM-Aero Dynamic



▲ Sheet Metal
Capsule Door Closer
Unbreakable

(Special Colours Available on order.)



Door Closer



Quality with Trust



▲ SM - D42



▲ SM-Regular



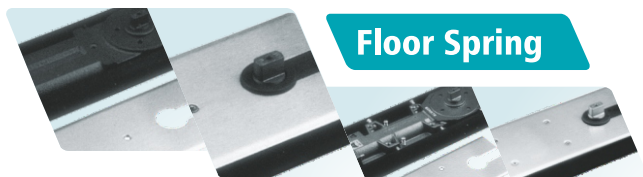
▲ SM-D-22



▲ SM-Sleek



(Special Colours Available on order.)



Floor Spring



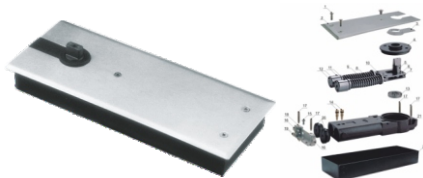
Quality with Trust



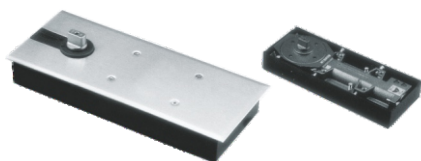
▲ SMFS-Hydraulic Patch



▲ SMFS-Epic



▲ SMFS-Sleek G-2

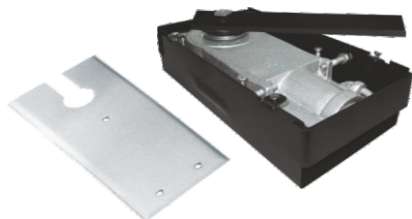


▲ SMFS-Sleek G-3

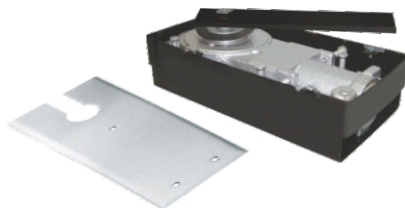


▲ SMFS-F32

IS:6315
CM/L-8361173



▲ SMFS-F86



▲ SMFS-F72



Spider Fittings



Quality with Trust



SMSP-B1 ▲
One Way Spider Without Fin



SMSP-B2 (90°) ▲
Two Way Spider without Fin



SMSP-B2 (180°) ▲
Two Way Spider without Fin



SMSP-B3 ▲
Three Way Spider without Fin



SMSP-B4 ▲
Four Way Spider without Fin



SMSP-A4 ▲
Four Way Spider



SMSP-A2 ▲
Two Way Spider



SMSP-A44 ▲
Two Way Spider
(Wall Mounted)



SMSP-A22 ▲
One Way Spider
(Wall Mounted)



SMSP-AFB-36FL ▲
Articulated Routel



SMSP-AFB-36CS ▲
Articulated Routel
with Counter Sunk Hole



SMSP-AFB-FL ▲
Fix Routel (Flat Head)



SMSP-AFB-CS ▲
Fix Routel
(Counter Sunk)



SMSA-01 ▲
Iron Assembly

Fin Plates

Spice Plates



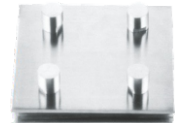
SMFP-300
Fin Bracket - S. S. 304



SMSP-250
Splice Plate - S. S. 304



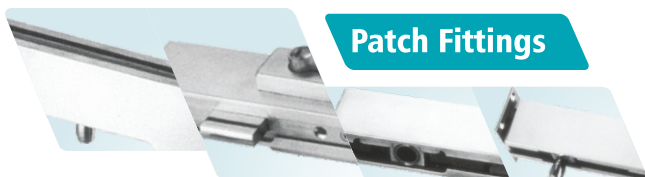
SMFP-200
Fin Bracket - S. S. 304



SMSP-200
Splice Plate - S. S. 304

Customised solution can be provided according to the requirements of projects.

Point Connectors



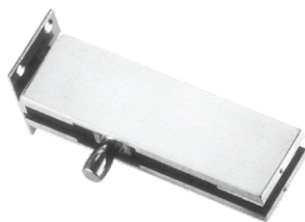
Patch Fittings



Quality with Trust



SMPF-10 ▲
Top Patch - S.S. 304



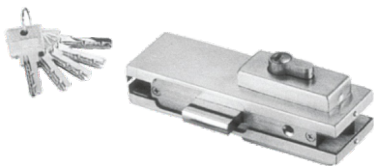
SMPF-30 ▲
Over Panel Patch - S.S. 304



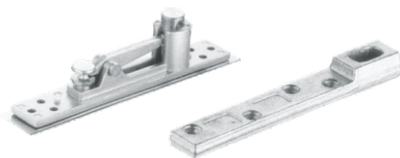
SMPF-20 ▲
Bottom Patch - S.S. 304



SMGDP ▲
Top Pivot - S.S. 304



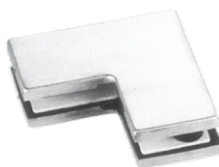
SMPL-10 ▲
Lock Patch - S.S. 304



SMFS-ACC ▲
Acc. for Wooden Doors



SMPF-40 ▲
Big L - S.S. 304



SMPF-610 ▲
Small L - S.S. 304



Shower Hinges



Quality with Trust



SMSH-1 ▲



SMSH-2 ▲



SMSH-3 ▲



SMSH-4 ▲



SMSH-5 ▲

Shower Knight

Head Acc.



SMKH-01 ▲
Wall to Rod (Dia 19mm)



SMKH-02 ▲
Rod to Glass (Dia 19mm)



SMKH-03 ▲
Rod to Rod (Dia 19mm)



SMKH-04 ▲
Rod to Rod T Connector

Reinforcing Bars



Adjustable

SMRB-01 ▲



Adjustable

SMRB-02 ▲

Door Knobs



SMDK-01 ▲
S.S. 304



SMDK-02 ▲
S.S. 304



Glass Connectors



Quality with Trust



SMGC-1 ▲
U connector



SMGC-2 ▲
Glass to Glass 135°



SMGC-3 ▲
Glass to Glass 90°



SMGC-4 ▲
L Connector



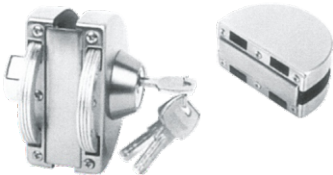
SMGC-5 ▲
Glass to Glass 180°

Available in Both 304 & 202 Stainless Steel Grade

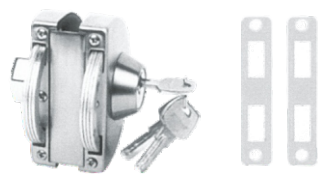


Locks without

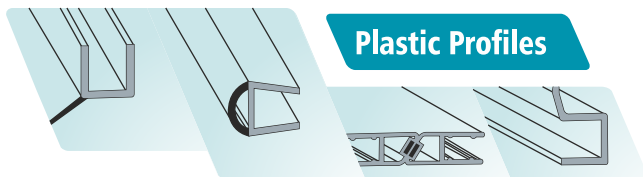
Cutout



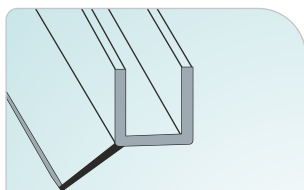
SMLK-3 ▲
Double Door Lock
S.S. 304



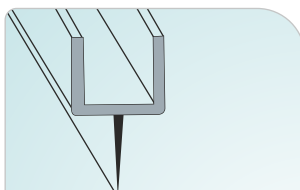
SMLK-4 ▲
Single Door Lock
S.S. 304



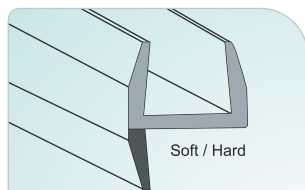
Quality with Trust



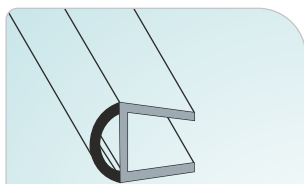
SMPS-01 ▲
For : 8/10/12mm glass
Size : 2.2mtr/2.5mtr



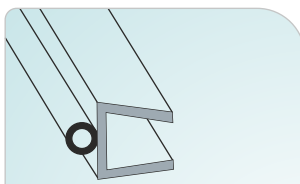
SMPS-02 ▲
For : 8/10/12mm glass
Size : 2.2mtr/2.5mtr



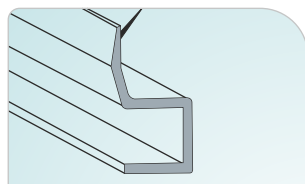
SMPS-03 ▲
For : 8/10/12mm glass
Size : 2.2mtr/2.5mtr



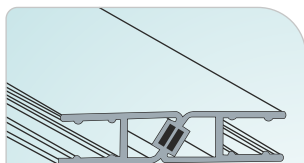
SMPS-04 ▲
For : 8/10/12mm glass
Size : 2.2mtr/2.5mtr



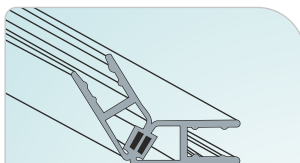
SMPS-05 ▲
For : 8/10/12mm glass
Size : 2.2mtr/2.5mtr



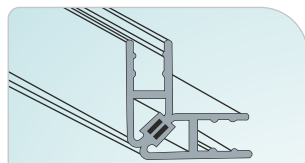
SMPS-06 ▲
For : 8/10/12mm glass
Size : 2.2mtr/2.5mtr



SMPS-M1 ▲
For : 8/10/12mm glass
Size : 2.2mtr/2.5mtr



SMPS-M2 ▲
For : 8/10/12mm glass
Size : 2.2mtr/2.5mtr



SMPS-M3 ▲
For : 8/10/12mm glass
Size : 2.2mtr/2.5mtr



Door Handles



Quality with Trust



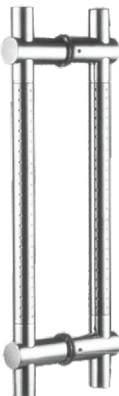
SMDH-55 ▲



SMDH-77 ▲



SMDH-11 ▲



SMDH-55 (Dotted) ▲



SMDH-TB-1 ▲



SMDHL-55 ▲

Fancy Handles



SMCDH-31 ▲



SMCDH-32 ▲



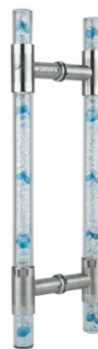
SMCDH-33 ▲



SMCDH-34 ▲



SMCDH-35 ▲



SMCDH-36 ▲



SMCDH-37 ▲



SMDH-WSS-11 ▲

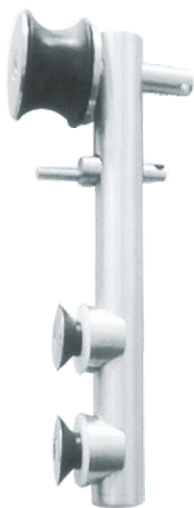


SMDH-WSS-22 ▲

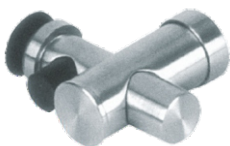
Shower Sliding System



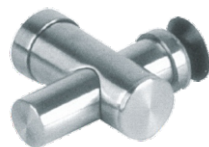
Quality with Trust



► SMSL-11A
Shower Sliding Roller
S.S. 304



SMSL-11C ▲
Connector with Stopper
S.S. 304



SMSL-11B ▲
Wall to Glass Connector
S.S. 304



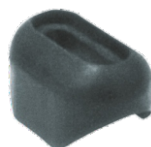
SMSL-11F ▲
Glass to Rod Holder
S.S. 304



SMSL-11E ▲
Wall to Rod Holder
S.S. 304



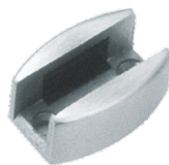
SMSL-11D ▲
Rod to Rod Holder
S.S. 304



SMSL-11-I ▲
Stopper
S.S. 304



SMSL-HN-50 ▲
Sliding Handle
S.S. 304



SMSL-11G ▲
Floor Guide
S.S. 304



Sliding Door System



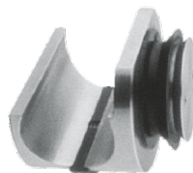
Quality with Trust



SMSL-33A ▲
Office Sliding Roller
S.S. 304



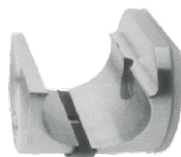
SMSL-HN-60 ▲
Door Handle
S.S. 304



SMSL-33-TH-G2 ▲
Glass to Rod Holder
S.S. 304



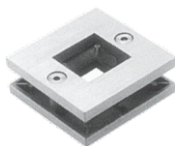
SMSL-33-TH-WL ▲
Wall to Rod Holder
S.S. 304



SMSL-33-TH ▲
Wall to Rod Clamp
S.S. 304



SMSL-22A ▲
Office Sliding Roller
S.S. 304



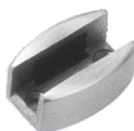
SMSL-HN-70 ▲
Door handle
S.S. 304



SMSL-LK ▲
Sliding Lock
S.S. 304



SMSL-33B ▲
Door Stopper
S.S. 304



SMSL-11G ▲
Floor Guide
S.S. 304



SMSL-33-TH-C2 ▲
Ceiling to Rod Clamp
S.S. 304



Office Sliding System



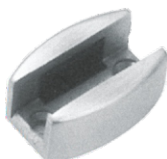
Quality with Trust



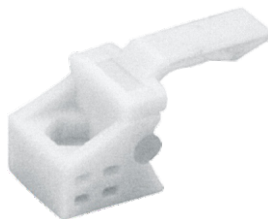
SMSL-44-A1 ▲
Roller (S.S.)
S.S. 304



SMSL-44-A2 ▲
Roller (Brass)
S.S. 304



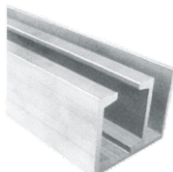
SMSL-44G ▲
Floor Guide
S.S. 304



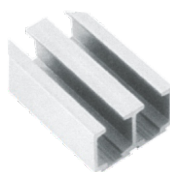
SMSL-44-A3 ▲
Stopper
S.S. 304



SMSL-44-B1 ▲
Aluminium Track (Single)
Available in 3mtr. & 4mtr.
S.S. 304



SMSL-44-B3 ▲
Aluminium Track
(Door+Fix Glass)
Available in 3mtr. & 4mtr.
S.S. 304



SMSL-44-B2 ▲
Aluminium Track
(Double Door)
Available in 3mtr. & 4mtr.
S.S. 304

Automatic Sliding Door

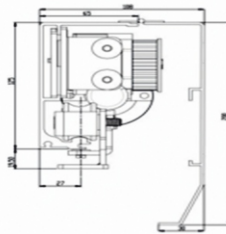
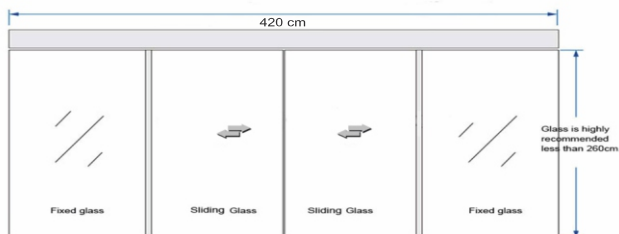


Quality with Trust

The Automatic door systems open up an almost unlimited range of door design options. Daily, millions of people enjoy their natural convenience. The most modern innovative drives in which highperformance capability, security, convenience and design are a priority and go towards ensuring that the automatic door solutions are both the focus and the eye catcher of every entrance area. Automatic sliding door systems are modern, space-saving and elegant.

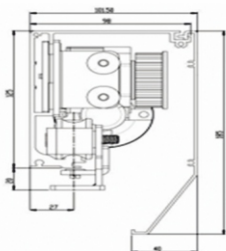
A door operator may be triggered in various ways :

1. Motion Sensor (such as microwave radar) - the door opens when a user approaches it.
2. Pushbutton - the door opens when a user presses a button.
3. Access control - the door opens when the an Access Control System determines the uses is authorized to go through.

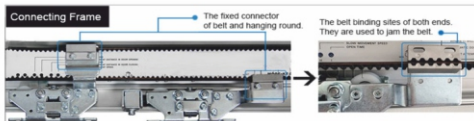
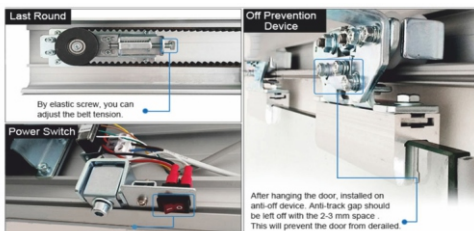


TECHNICAL SPECIFICATION

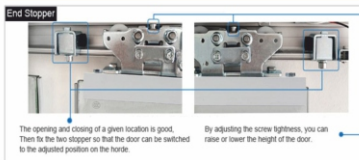
Model	SD150	
Door range	Single leaf	Double leaf
Door leaf rate	Max 160kg*1	Max 120kg*2
Door width	600-3000mm	600-1500mm
Opening speed	100-550mm/s(Adjustable)	
Closing speed	100-550mm/s(Adjustable)	
Opening time	1-20 seconds	
Motor	DC 24v Brushless DC Servo Motor	
Supply voltage	Input AC 110V/220V;50-60Hz	
Working temperature	-20-50°C	
Working noise	Less than 50 db	



Excellent DC brushless motor, high wear-resistant qualities wheels and reasonable structure design makes it more stable, quite, longer life.



STANDARD ACCESSORIES



OPTIONAL ACCESSORIES



Screws

Nylon Sleeves & Rollers



- ▲ MS
- ▲ Gypsum
- ▲ Wooden Screw

8-19*, 6-19*, 6-50*, 6-60*, 4-13*,
6-13*, 8-13*, 8-38*, 10-38*, 6-25*,
8-60*, 75-10* 8-50*, 19*6, 25*6,
32*6, 38*6, 50*6, 60*6, 70*6,
75-10, 100-10, 35-8.



▲ Nylon Sleeves



▲ Rollers



Quality with Trust



AN ISO 9001:2008 COMPANY

GURU HARKISHAN MECHANICAL WORKS (Regd.)

E-mail : sales.samratindia@gmail.com Web : www.samratindia.in

9312 9315 84



Like us : facebook.com/samratindia

Authorised Dealer