

**20
24**




CATALOG

MIDPOINT TRAVEL



PROGRAMS

2024

TOUR	PRICE
BASIC	\$689
PLUS	\$849
ELITE	\$1105
DELUXE	\$1 529
Custom	Obtain a  quote for your customized experience.

NOTE: The program does not cover airfare or entry tax to the islands.



BASIC

INCLUDES

- Lodging for 4 days and 3 nights on Santa Cruz Island
- Complete meals (menu category)
- Licensed guides
- Transfer of activities
- Participation in activities
- Transfer Itabaca Canal-hotel round trip
- Tortuga Bay Beach
- "Parte alta"
- "Las Grietas"
- "Los Alemanes" Beach
- Charles Darwin Research Center

NOT INCLUDED

- Flight tickets
- Ingala card \$20
- Access to the island for domestic visitors (adults \$30; children, seniors, and individuals with disabilities \$15)
- International visitors (adults \$200; children, seniors, and individuals with disabilities \$100)
- Lobito Bus (adults \$10; children, seniors, and individuals with disabilities \$5)



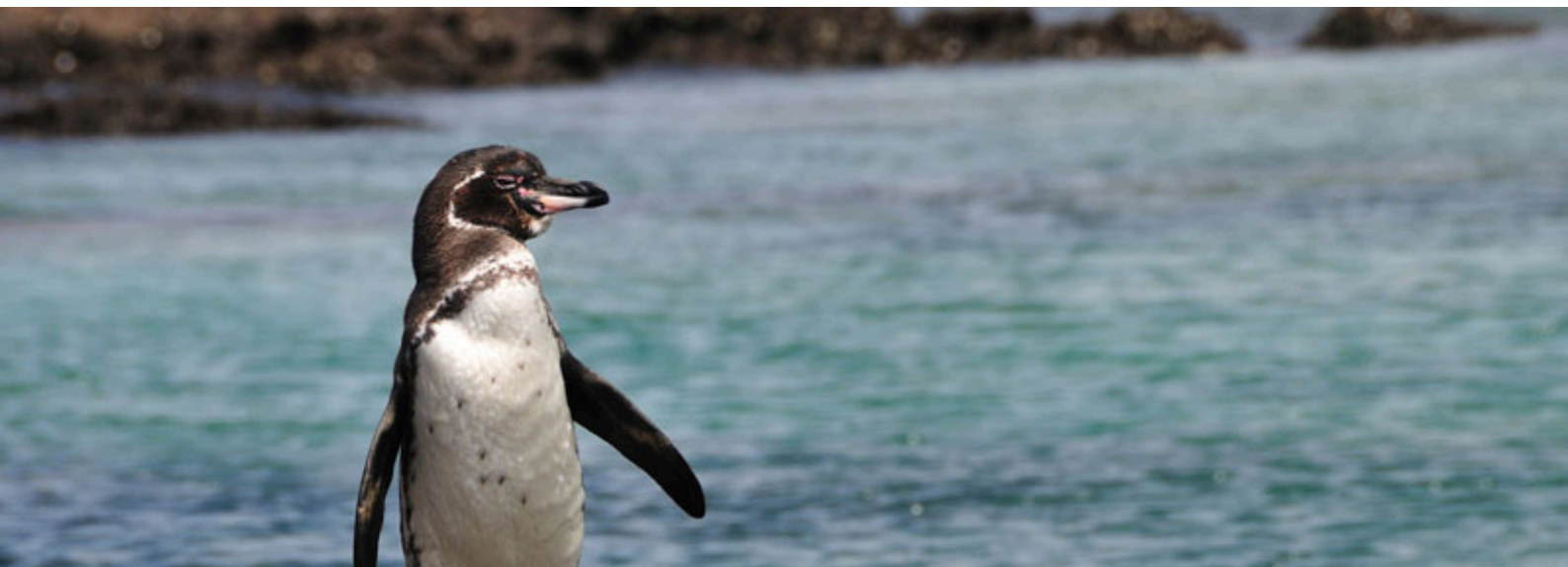
ELITE

INCLUDES

- Accommodation for 5 days and 4 nights on Santa Cruz Island.
- Full day Isabela or San Cristobal (your choice)
- Transfer Itabaca Canal-hotel round trip
- Complete meals (menu category)
- Licensed guides
- Transfer of activities
- Participation in activities
- Tortuga Bay Beach
- "Parte alta"
- "Las Grietas"
- "Los Alemanes" Beach
- Charles Darwin Research Center

NOT INCLUDED

- Flight tickets
- Ingala card \$20
- Access to the island for domestic visitors (adults \$30; children, seniors, and individuals with disabilities \$15)
- International visitors (adults \$200; children, seniors, and individuals with disabilities \$100)
- Lobito Bus (adults \$10; children, seniors, and individuals with disabilities \$5)
- Dock fee for inter-island travel (nationals \$5 and foreigners \$10)



ELITE

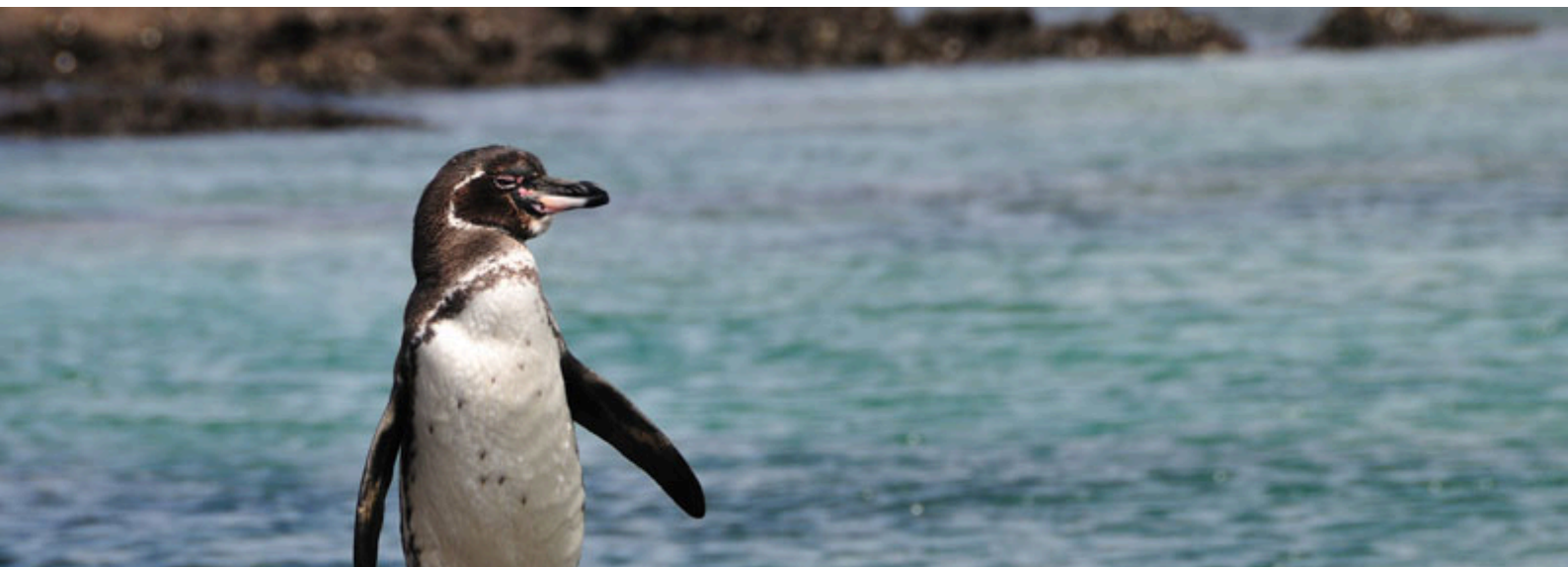
SELECT 1 ISLAND FOR YOUR FULL DAY (DAY 4)

ISABELA

- Playa Concha Perla
- Humedales
- Flamingos
- Centro de Crianza Arnaldo Tupiza

SAINT KITTS AND NEVIS

- Lobería
- Snorkel en Santa Fé
- Playa Escondida
- Playa Mann
- Centro de Interpretación



DELUXE

INCLUDES	NOT INCLUDED
<p>Accommodation for six days and five nights on Santa Cruz Island (Day five complimentary)</p> <ul style="list-style-type: none">-Transfer Itabaca Canal-hotel round trip <p>Full day in Isabela and San Cristobal</p> <p>Complete meals (menu category)</p> <p>Licensed guides</p> <ul style="list-style-type: none">-Transfer of activities-Participation in activities-Tortuga Bay Beach-Parte alta-Grietas-Los Alemanes Beach-Estación Charles Darwin	<ul style="list-style-type: none">-Flight tickets- Ingala card \$20-Access to the island for domestic visitors (adults \$30; children, seniors, and individuals with disabilities \$15)International visitors (adults \$200; children, seniors, and individuals with disabilities \$100)Lobito Bus (adults \$10; children, seniors, and individuals with disabilities \$5)Dock fee for inter-island travel (nationals \$5 and foreigners \$10)



DELUXE

ISABELA

- Playa Concha Perla
- Humedales
- Flamingos
- Centro de Crianza Arnaldo Tupiza

SAN CRISTÓBAL

- Lobería
- Snorkel en Santa Fé
- Playa Escondida
- Playa Mann
- Centro de Interpretación

SANTA CRUZ

- -Playa Tortuga Bay
- -Parte alta
- -Grietas
- -Playa Los Alemanes
- -Estación Charles Darwin



CUSTOMIZED

\$55

Charles Darwin Research Station



\$55

Germans Beach and Crevices



\$55

Tortuga Bay Shoreline



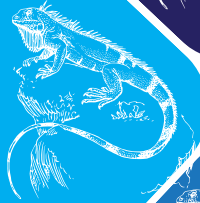
\$60

Upper Section



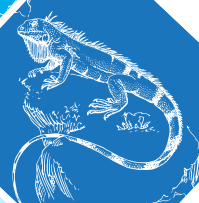
\$55

Garrapatero (minimum 2 participants)



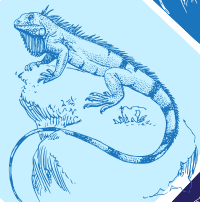
\$76

Bahia Tower



\$-

Lodging and meals

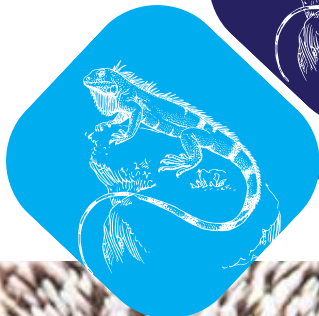


Complete Day

- Blue sharks priced at \$230
- Pearl Shell \$210

Complete Day

- Floreana \$240
- St. Christopher \$240
- Santa Fe \$220
- Finch \$253



POLICIES AND REGULATIONS

GENERAL TERMS

To secure the reservation, a payment of 60% of the total amount is required. The remaining 40% can be settled up to 30 days prior to the travel date. If the trip is planned within the next 30 days, full payment of 100% must be completed immediately.

The reservation payment of 60% is non-refundable.

MIDPOINT TRAVEL clearly states that it functions exclusively as an intermediary between travelers and transportation companies across air, sea, and land, in addition to hotels, restaurants, and similar entities. As a result, it disclaims all responsibility for any shortcomings in the services offered, as well as for any damages, accidents, or delays that may arise during the delivery of services to passengers.

Once the reservation is confirmed, modifications to the date are not allowed.

In the event of flight cancellations or other unexpected situations, tour payments will not be refunded.



POLICIES AND REGULATIONS

PAYMENT TERMS

Payments will be processed exclusively via PayPal using the verified link https://paypal.me/MIDPOINTTRAVEL?country.x=EC&locale.x=en_US and through Western Union. In the case of payments made via Western Union, the client will be responsible for any additional fees. The reservation will be confirmed once the payment has been processed and verified. All payments should be directed to: midpointtravelec@gmail.com





OBTAIN A QUOTE FROM US.

☎ (593) 983924241

✉ midpointtravelec@gmail.com

☎ (593) 978923030

📷 [@midpoint.travel.ec](https://www.instagram.com/midpoint.travel.ec)

Consulta de RUC

RUC

1793218040001

Razón social

MIDPOINT TRAVEL S.A.S.

Estado contribuyente en el RUC

ACTIVO

Representante legal

Nombre/Razón Social:
Identificación:

LUCERO VALLEJO GENESIS MISHEL
0401604574

Contribuyente fantasma

NO

Contribuyente con transacciones inexistentes

NO

Actividad económica principal

ACTIVIDAD DE OPERADORES TURÍSTICOS QUE SE ENCARGAN DE LA PLANIFICACIÓN Y ORGANIZACIÓN DE PAQUETES DE SERVICIOS DE VIAJES (TOURS) PARA SU VENTA A TRAVÉS DE AGENCIAS DE VIAJES O POR LOS PROPIOS OPERADORES TURÍSTICOS. ESOS VIAJES ORGANIZADOS (TOURS) PUEDEN INCLUIR LA TOTALIDAD O PARTE DE LAS SIGUIENTES CARACTERÍSTICAS: TRANSPORTE, ALOJAMIENTO, COMIDAS, VISITAS A MUSEOS, LUGARES HISTÓRICOS O CULTURALES, ESPECTÁCULOS TEATRALES, MUSICALES O DEPORTIVOS.

Tipo contribuyente	Régimen	Categoría	
SOCIEDAD	RIMPE	EMPRENDEDOR	
Obligado a llevar contabilidad	Agente de retención	Contribuyente especial	
SI	NO	NO	
Fecha inicio actividades	Fecha actualización	Fecha cese actividades	Fecha reinicio actividades
2024-06-19			