



# SV Residency II

3 BHK LUXURY APARTMENTS

@ Kuntloor, Hyderabad



P02400007393



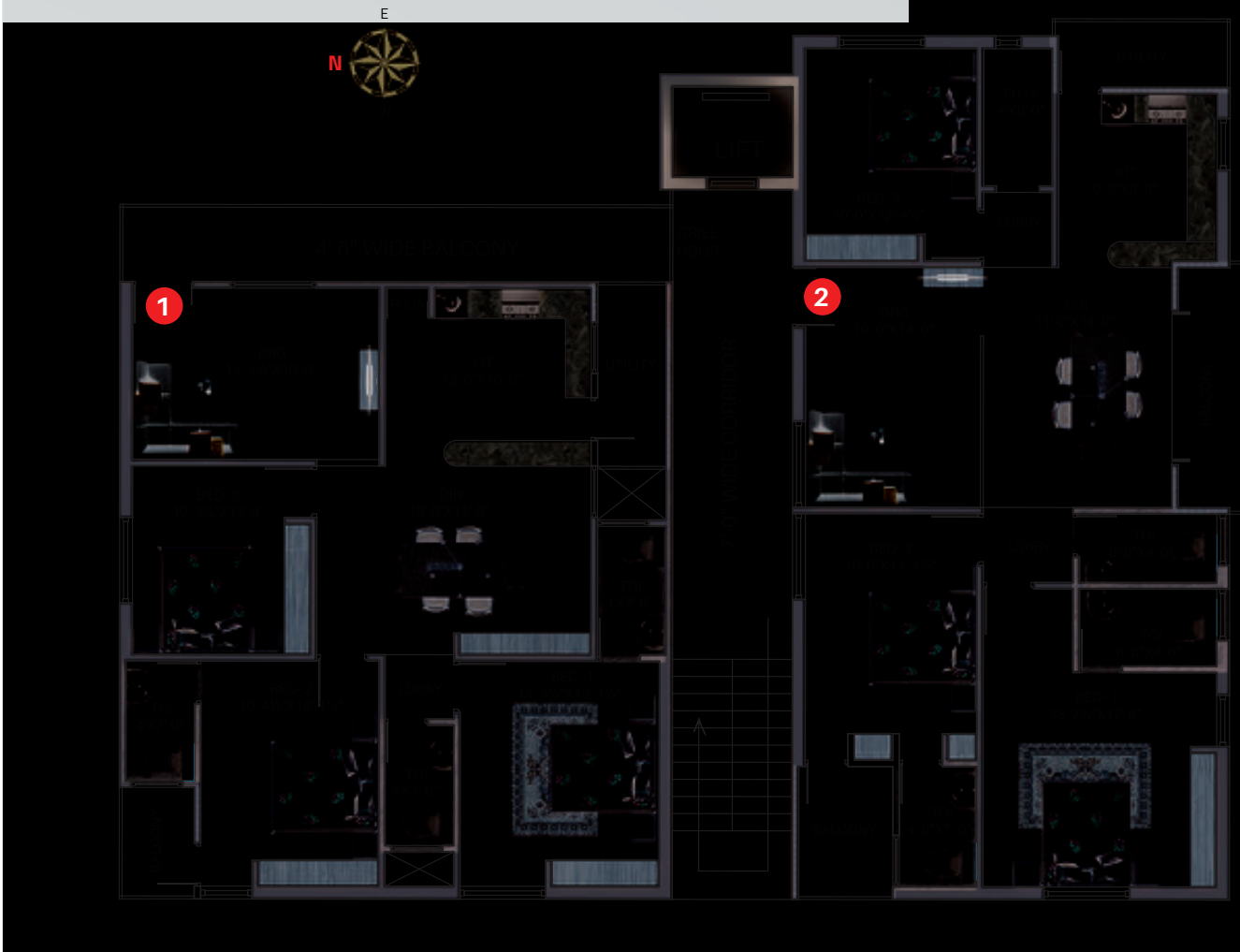
Approved Project

It's a smart move with smart home!

## TYPICAL FLOOR PLAN

### SALIENT FEATURES

- ◆ East & North facing flats.
- ◆ Luxurious, limited 3 bedroom flats.
- ◆ All are well-ventilated independent flats without common walls.
- ◆ Power backup generator.
- ◆ Proper water supply.
- ◆ Every flat is designed as per Vaastu principles.
- ◆ Project registered in TS-RERA, No. P02400007393



**1**  
1630 Sft.

**3 BHK**  
EAST FACING

**2**  
1660 Sft.

**3 BHK**  
NORTH FACING



# S P E C I F I C A T I O N S



	<b>STRUCTURE</b>	RCC Framed Structure as per NBC/IS codes.
	<b>IN FILLS</b>	Red brick 9" external and 4.5" internal walls.
	<b>PLASTERING</b>	Internal: Double coat plastering for walls & ceiling. External: Two coats cement plaster for external walls, RCC and masonry surfaces.
	<b>WOOD WORK</b>	Main door & frame will be teak wood with melamine polishing and brass fittings. Internal Doors: Teak wood frame and Flush doors for bedrooms & WPC Frame and door for bath rooms. Windows : UPVC window fittings with iron grills.
	<b>FLOORING</b>	Living, dining, bedroom & kitchen: vitrified tiles (24" x 24") of standard make. Bathrooms: Acid resistant & anti-skid ceramic tiles of standard make.
	<b>CLADDING</b>	Bathrooms: Ceramic tile dado upto door height. Kitchen: Ceramic tiles dado upto 2'-0" height above kitchen platform. Kitchen Platform : Granite platform with stainless steel sink with Jaquar Tap (or) Cera (or) Parryware (or) equivalent make.
	<b>PAINTING</b>	External surfaces: With two coats of exterior apex emulsion paint over one coat of primer of Asian make. Internal surfaces: With two coats of Tractor emulsion paint over smooth putty finish of Asian make.
	<b>ELECTRICAL</b>	Concealed copper wiring of POLYCAB or equivalent make. Power outlets for air conditioner in bedrooms. Plug points for T.V. & Audio systems in living room. MCB's for each distribution boards of Anchor or equivalent make. Standard switches complying Indian standards of reputed brand.
	<b>PLUMBING</b>	All bathrooms connects of Jaquar or Cera CP fittings.
	<b>SANITARY</b>	Commode and Wash basins of HINDWARE, CERA, Parryware or equivalent make.
	<b>TELECOM</b>	Telephone points in living room & master bedroom.
	<b>CABLE T.V.</b>	Provision for cable connection in entertainment room & master bedroom
	<b>VAASTHU</b>	All homes are planned considering Vaasthu.



- NOTE :**
- \* Registration, GST will be paid by the purchaser as per the government norms.
  - \* Shelves, Chajjas, lofts, arches or any kind of modifications / alterations are borne by purchaser only
  - \* Flat will be handed over for wood work / interiors after receiving of 100% payment only.

