

# PAVILION SQUARE

KUALA LUMPUR

LUXURY RESIDENCES





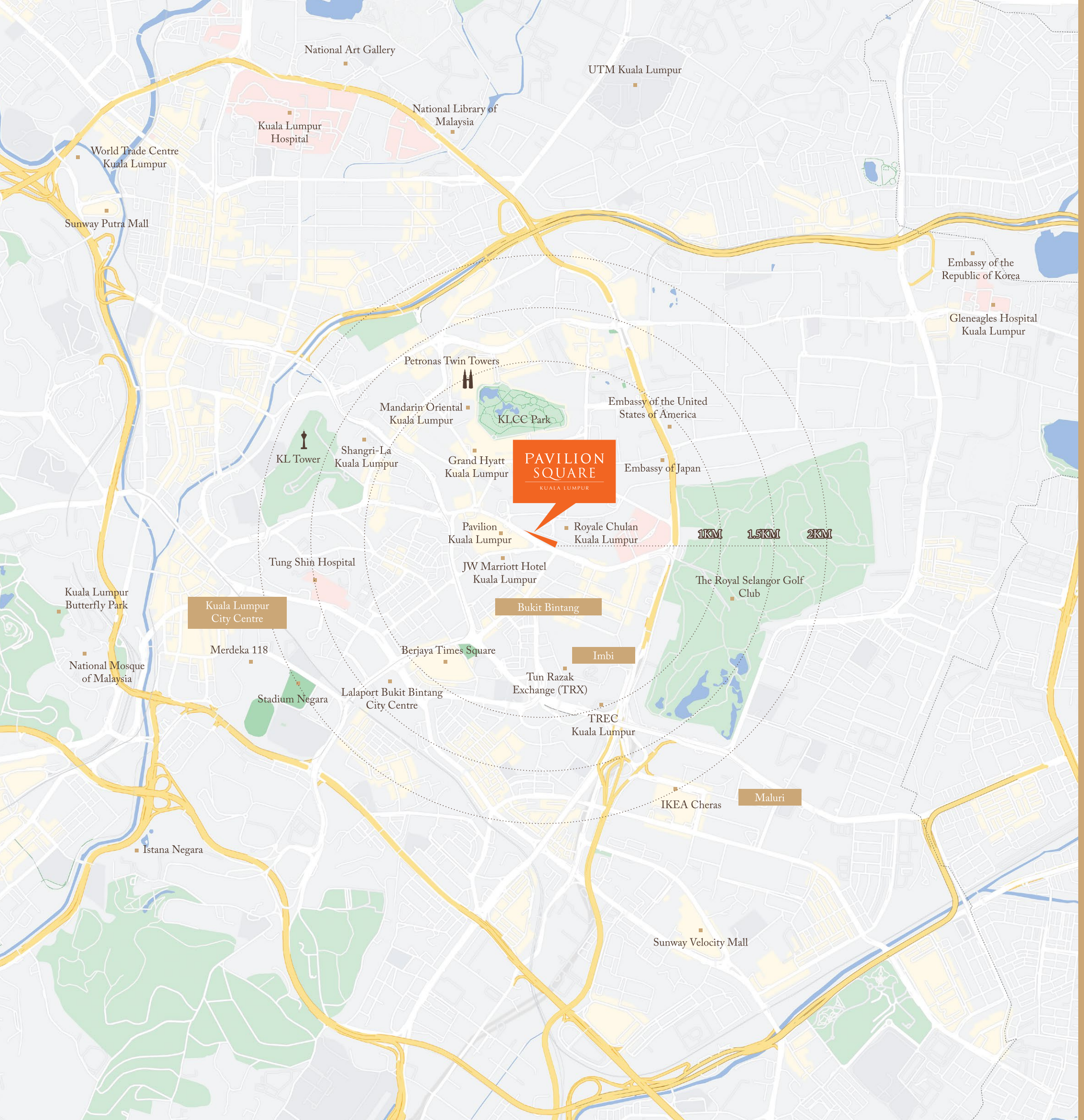
An aerial photograph of the Kuala Lumpur skyline at sunset. The sky is a mix of deep blue and vibrant orange. The city is densely packed with skyscrapers, many of which are illuminated with warm lights. The Petronas Twin Towers are prominent on the right side of the image. The overall scene conveys a sense of a bustling, modern metropolis.

# *PAVILION SQUARE*

THE EPICENTRE OF KUALA LUMPUR

Situated in the vibrant heart of Malaysia, Pavilion Square is a melting pot of cultures where lives intersect, fostering a community of visionaries from all walks of life. This prime location is home to the best this city has to offer.





PRIME RESIDENCE IN THE

# HUB OF URBAN PULSE

Located strategically in the Golden Triangle, Pavilion Square offers seamless access to amenities and landmarks, embodying convenient uptown living.

MALLS

- Pavilion Kuala Lumpur
- Suria KLCC
- The Starhill
- Fahrenheit88

FITNESS AND RECREATION

- The Royal Selangor Golf Club
- KLCC Park
- KL Forest Eco Park

LANDMARKS

- KL Tower
- Petronas Twin Towers
- Merdeka Square
- Merdeka 118
- Tun Razak Exchange (TRX)

TRANSPORTATION HUBS

- Bukit Bintang MRT Station
- Conlay MRT Station
- Bukit Bintang Monorail Station

MEDICAL

- Prince Court Medical Centre
- Tung Shin Hospital
- Kuala Lumpur Hospital

EDUCATION

- EtonHouse Malaysia
- St. John's International Primary School and Secondary School
- The International School of Kuala Lumpur







YOUR ENTRY TO  
*REFINED SOPHISTICATION*



Pavilion Square is the latest addition to Pavilion Group's luxury lifestyle developments.  
Enhanced by its unique facade and meticulously crafted masterplan.  
Pavilion Square, where you can truly feel at home.

---

67 storeys

---

960 units

---

Luxury residences ranging from cosy 504 sq.ft. studios  
to practical 1,272 sq.ft. suites

---

Dedicated link-bridge to Pavilion Kuala Lumpur

---



SEAMLESSLY CONNECTED TO  
*PAVILION*  
*KUALA LUMPUR*

Access lifestyle amenities seamlessly with Pavilion Square's  
dedicated link-bridge to Pavilion Kuala Lumpur.

---





# *A MAJESTIC LOBBY*

FOR THE ELITES

Step into Pavilion Square's grand lobby, its majestic design and lavish finishes promise an upscale living experience right from the start.



*OVER*  
*70,000 SQ.FT.*  
OF DIVERSE LIFESTYLE FACILITIES

Courtyard Garden at Level 12 features versatile indoor and outdoor spaces such as the Function Room, Entertainment Room, and BBQ Deck, perfect for gatherings and creating memories with friends and family.



Water Feature and Plaza



A SANCTUARY

# ABOVE THE CITY

Uncover the essence of luxury at Pavilion Square's exclusive sky facilities, an elevated sanctuary offering a harmonious blend of modern elegance and peaceful retreat amid the bustling cityscape, perfect for relaxation and enjoyment.

118m  
Sky Pool

Level 67

Sky  
Garden

Level 66

15,000 sq.ft.  
Sky Wellness

Level 63A





DISCOVER THE  
*LONGEST SKY POOL*  
*IN THE HEART*  
*OF KUALA LUMPUR*



UNWIND IN OUR

## *118-METRE INFINITY POOL*

67 storeys above Kuala Lumpur, our rooftop infinity pool offers breathtaking views of the city. Relax and enjoy the longest rooftop infinity pool in Kuala Lumpur City Centre at Pavilion Square.







# *SKY GARDEN IN THE CLOUDS*

AT THE PINNACLE OF LEVEL 66

Rejuvenate in our Sky Garden, escape to lush greenery and fresh air in the heart of the bustling city.



# THE LARGEST SKY WELLNESS IN KUALA LUMPUR CITY CENTRE

15,000 SQ.FT. OF FITNESS FACILITIES AT LEVEL 63A

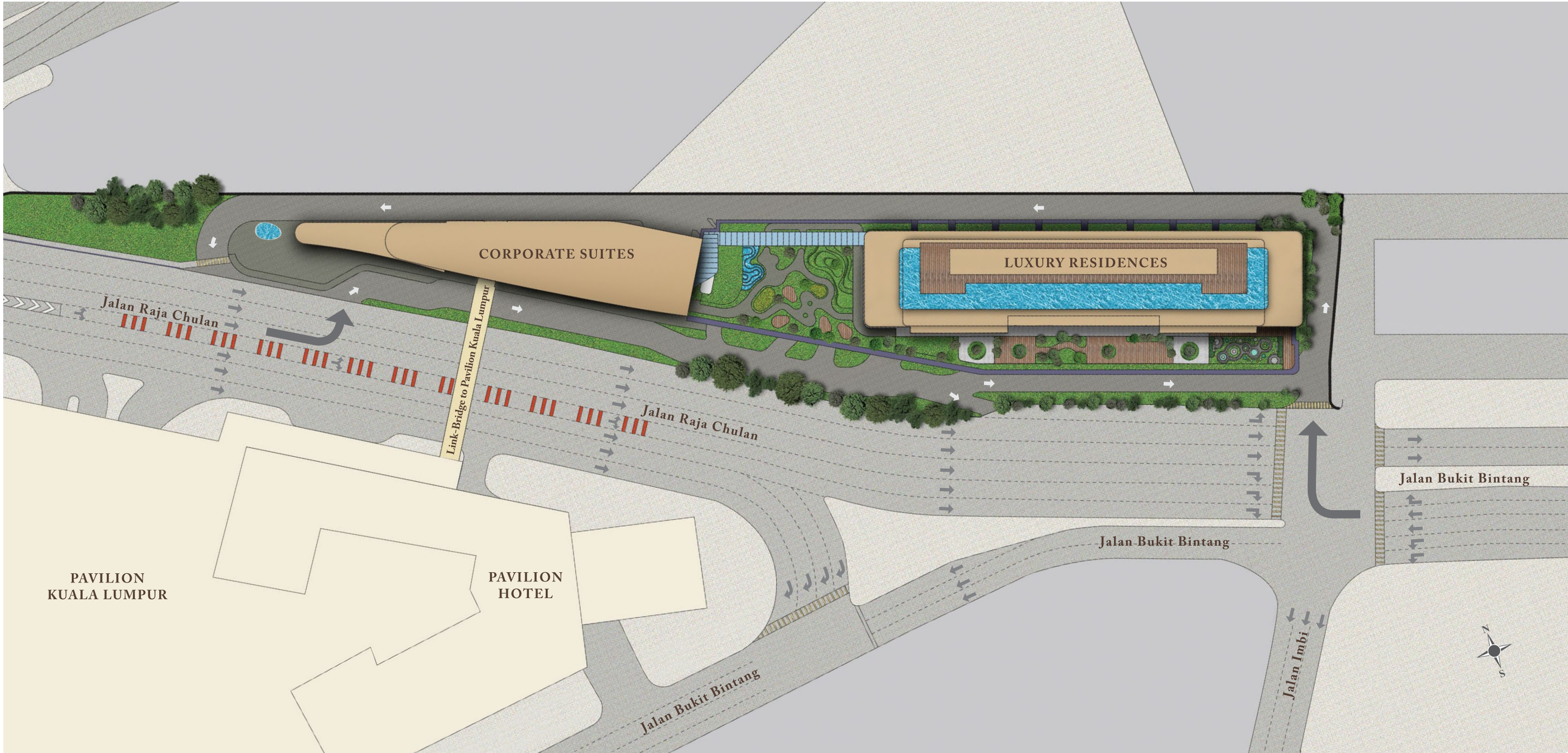
Elevate your fitness journey at the highest and largest Sky Wellness floor in Kuala Lumpur City Centre, featuring a fully-equipped indoor and outdoor gym with branded equipment, complemented by steam and sauna amenities. Recover in the Sports Lounge post-workout for ultimate relaxation.





OVERALL  
*SITE PLAN*

---





# FACILITIES

## FLOOR PLAN

### LOBBY

#### LEVEL 1



- 1 Retail
- 2 Lobby
- 3 Concierge
- 4 Waiting Lounge
- 5 Mail Room
- 6 Washroom
- 7 Management Office
- 8 Security Room
- 9 Lift Lobby
- 10 Collection Room

### COURTYARD GARDEN

#### LEVEL 12

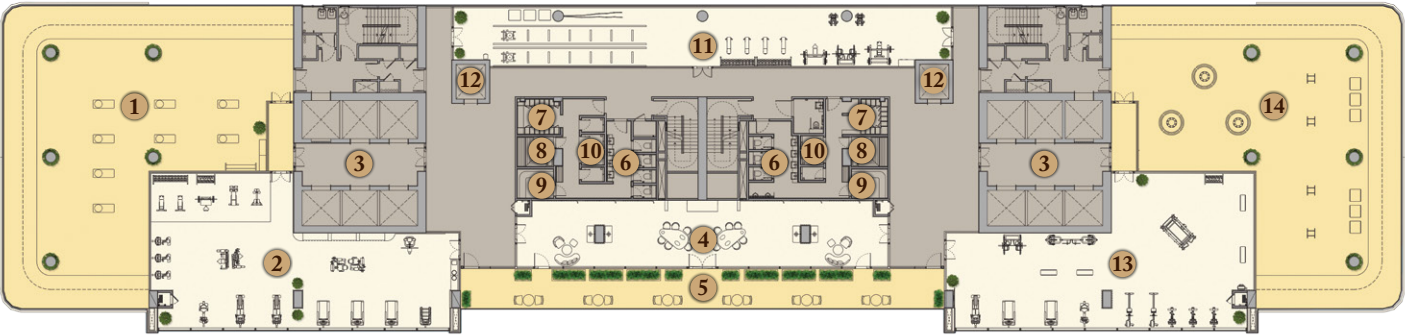


- 1 Access to Link-bridge
- 2 Water Feature and Plaza
- 3 Serene Trail
- 4 The Promenade Walkway
- 5 Garden Terrace
- 6 Yoga Deck
- 7 Seating Courtyard
- 8 The Retreat
- 9 Club Lounge
- 10 Lift Lobby
- 11 Outdoor Lounge
- 12 Multi-purpose Hall
- 13 Pre-function Room
- 14 Washroom
- 15 Landscape Terrace
- 16 Karaoke Room\*
- 17 Foosball Table
- 18 Pool Table
- 19 Entertainment Room
- 20 Mahjong Room
- 21 Snooker Table
- 22 Lounge Area
- 23 BBQ Deck
- 24 Operation Office\*
- 25 Laundromat\*
- 26 Indoor Kids Room
- 27 Kids Playground
- 28 Surau

\*Note: Facilities space only

### SKY WELLNESS

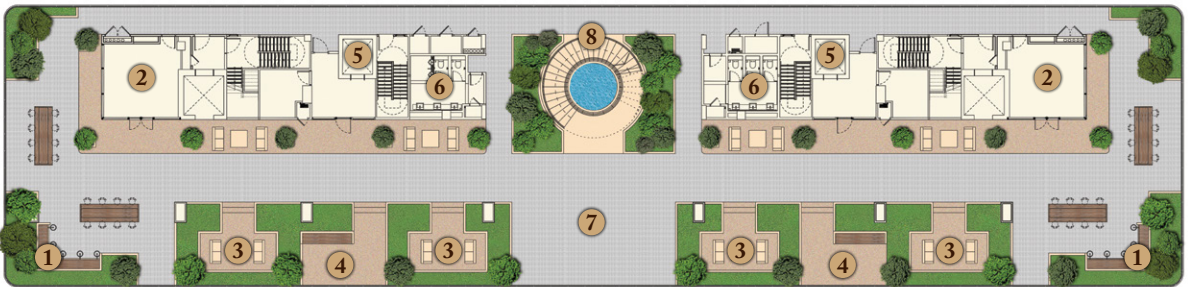
#### LEVEL 63A



- 1 Outdoor Yoga Deck
- 2 Gymnasium (Cardio & Strength Training)
- 3 Lift Lobby
- 4 Sports Lounge
- 5 Outdoor Lounge
- 6 Washroom
- 7 Lockers
- 8 Sauna
- 9 Steam Room
- 10 Changing Room
- 11 Gymnasium (Functional Training)
- 12 Facilities Lift (Level 66 & 67)
- 13 Gymnasium (Cardio & Functional Training)
- 14 Outdoor Gymnasium

### SKY GARDEN

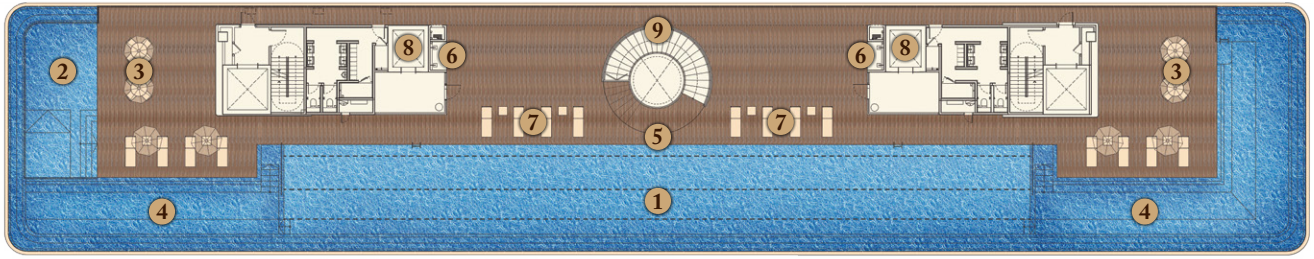
#### LEVEL 66



- 1 Co-working Lounge
- 2 Indoor Lounge
- 3 Reading Court
- 4 Sunken Plaza and Viewing Deck
- 5 Facilities Lift (Level 66 & 67)
- 6 Washroom
- 7 Sky Plaza
- 8 Spiral Staircase

### SKY POOL

#### LEVEL 67



- 1 Infinity Pool
- 2 Kids Pool
- 3 Table and Seating Area
- 4 Wading Pool/Jacuzzi
- 5 Pool Deck
- 6 Outdoor Shower
- 7 Sun Loungers
- 8 Facilities Lift (Level 66 & 67)
- 9 Spiral Staircase



REFINED  
*LIVING EXPERIENCE*





STEP INTO LUXURY

# FULLY FURNISHED DESIGN SUITES

With practical layouts and thoughtful space planning, Pavilion Square suites offer the perfect blend of convenience and comfort. Enjoy the fully fitted kitchen equipped with modern appliances, and unwind in a beautifully furnished bedroom that welcomes you home to serenity and elegance everyday.







## *PICTURE PERFECT*

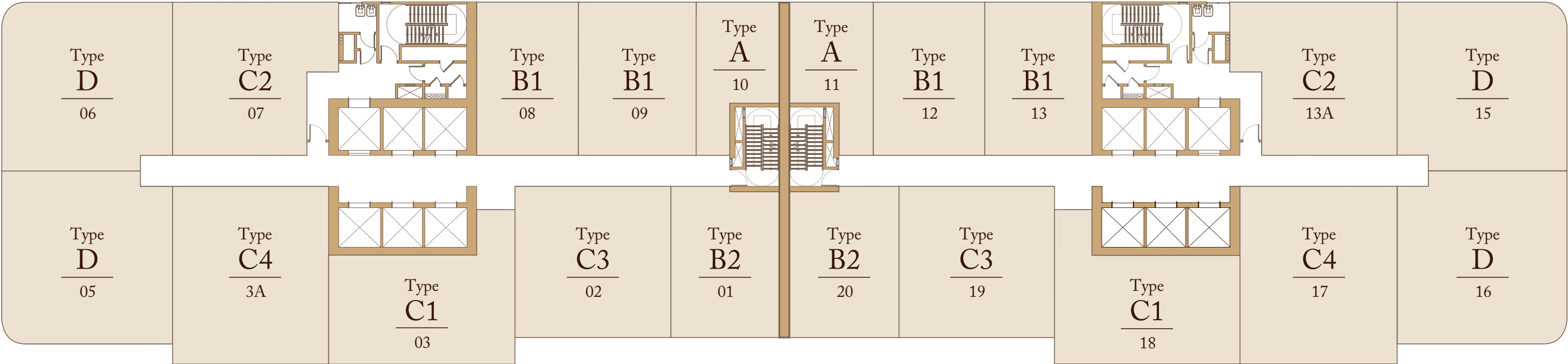
VIEWS FROM THE COMFORT OF HOME

Step out onto your private balcony, a space for fresh air and enjoy Kuala Lumpur's iconic skyline. This outdoor extension of your living area offers a peaceful retreat where you can unwind and recharge everyday.



# TYPICAL FLOOR LAYOUT

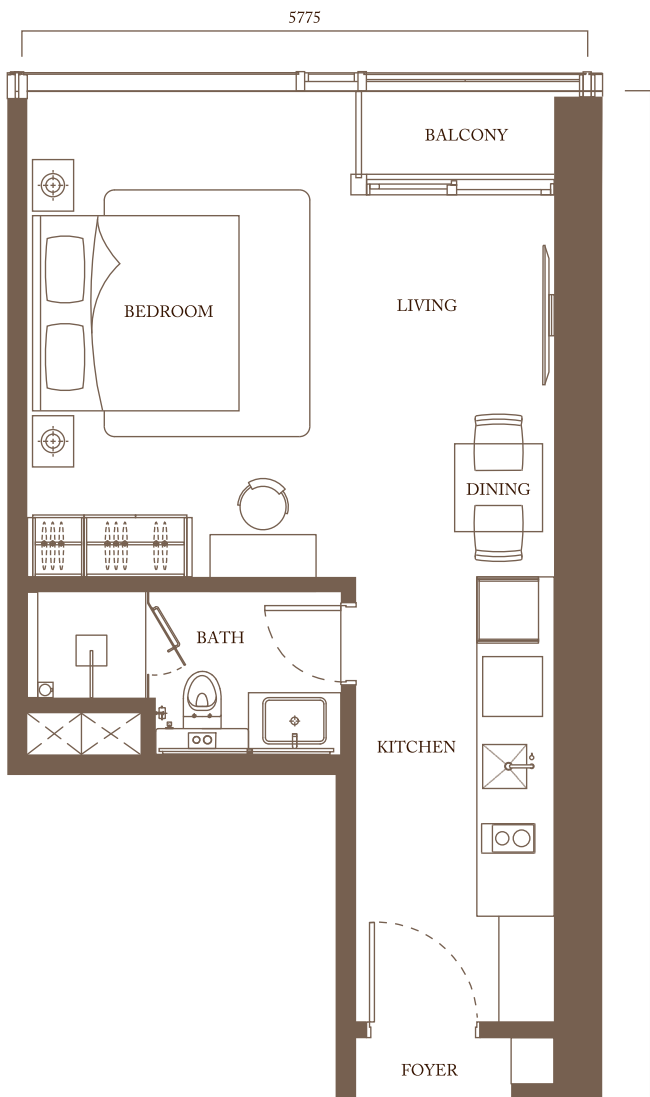
Level 13A–37 & Level 39–62



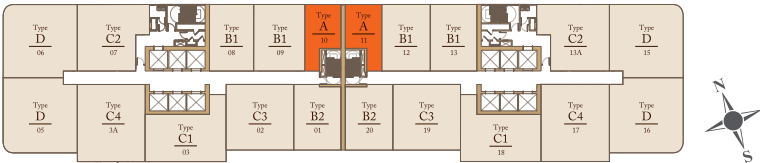


# TYPE A

STUDIO  
504 sq.ft. (46.8 sq.m.)

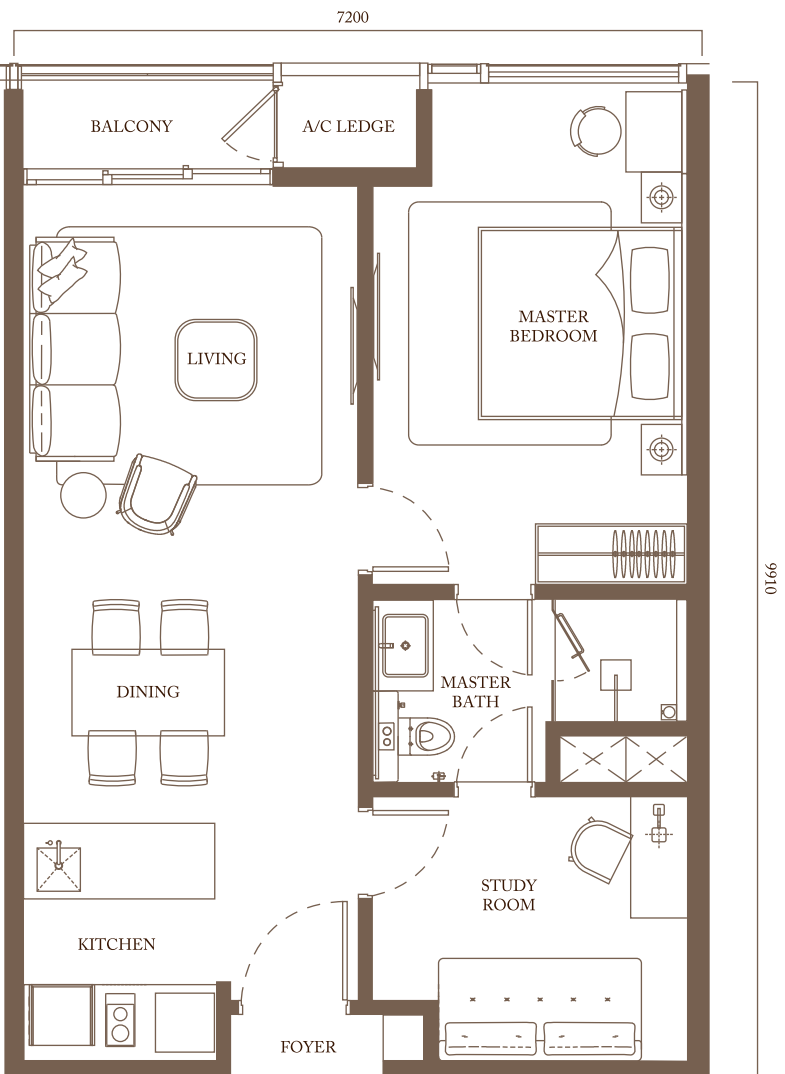


Level 13A–37 & Level 39–62

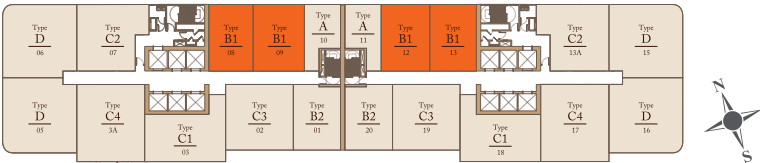


# TYPE B1

1 BEDROOM + STUDY  
770 sq.ft. (71.5 sq.m.)



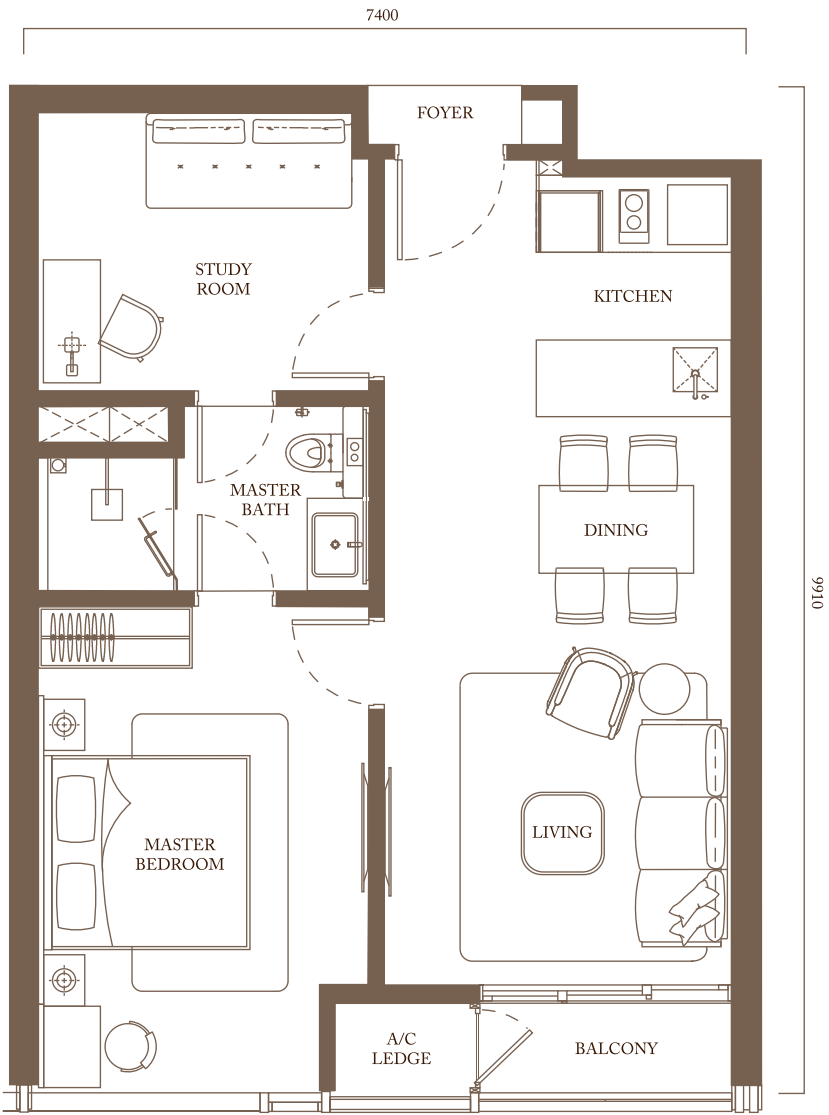
Level 13A–37 & Level 39–62



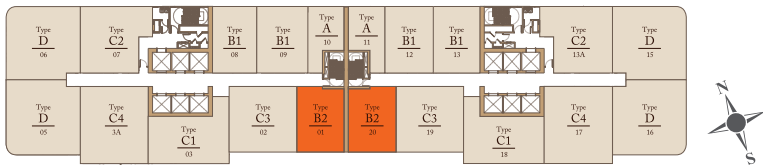


TYPE B2

1 BEDROOM + STUDY  
772 sq.ft. (71.7 sq.m.)

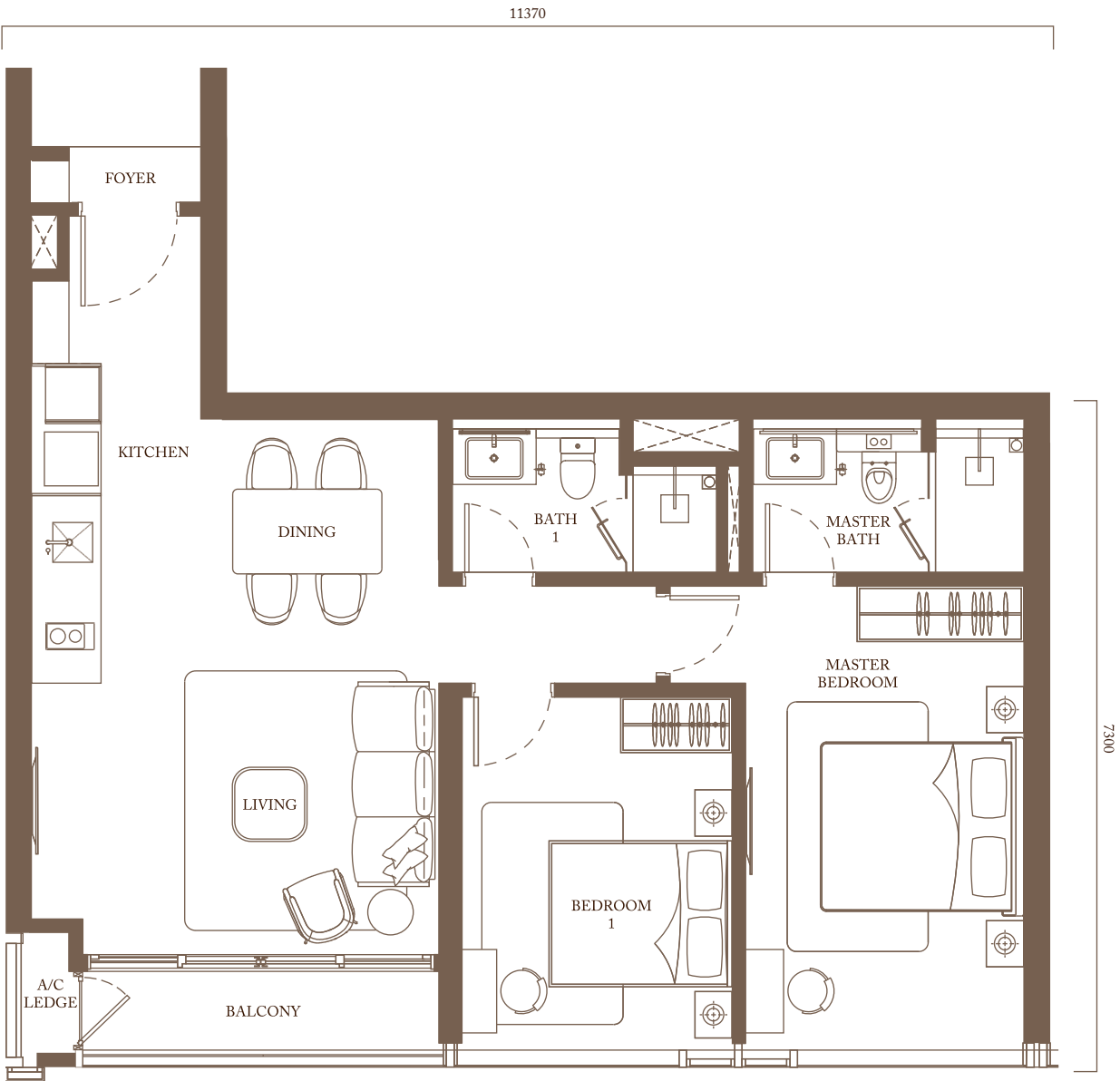


Level 13A-37 & Level 39-62

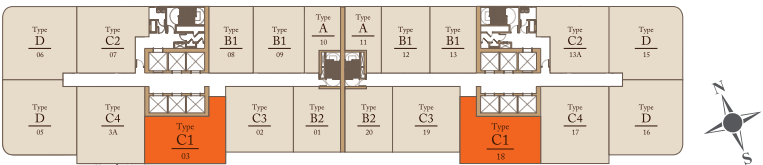


TYPE C1

2 BEDROOMS  
966 sq.ft. (89.7 sq.m.)



Level 13A-37 & Level 39-62





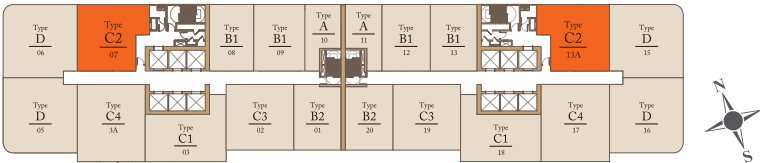
TYPE C2

2 BEDROOMS + STUDY

978 sq.ft. (90.9 sq.m.)



Level 13A-37 & Level 39-62



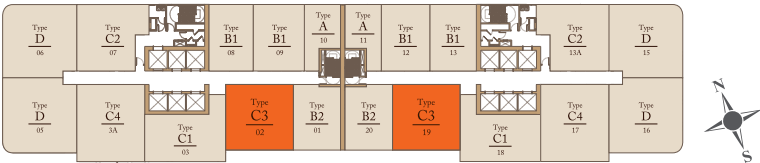
TYPE C3

2 BEDROOMS + STUDY

1,100 sq.ft. (102.2 sq.m.)



Level 13A-37 & Level 39-62

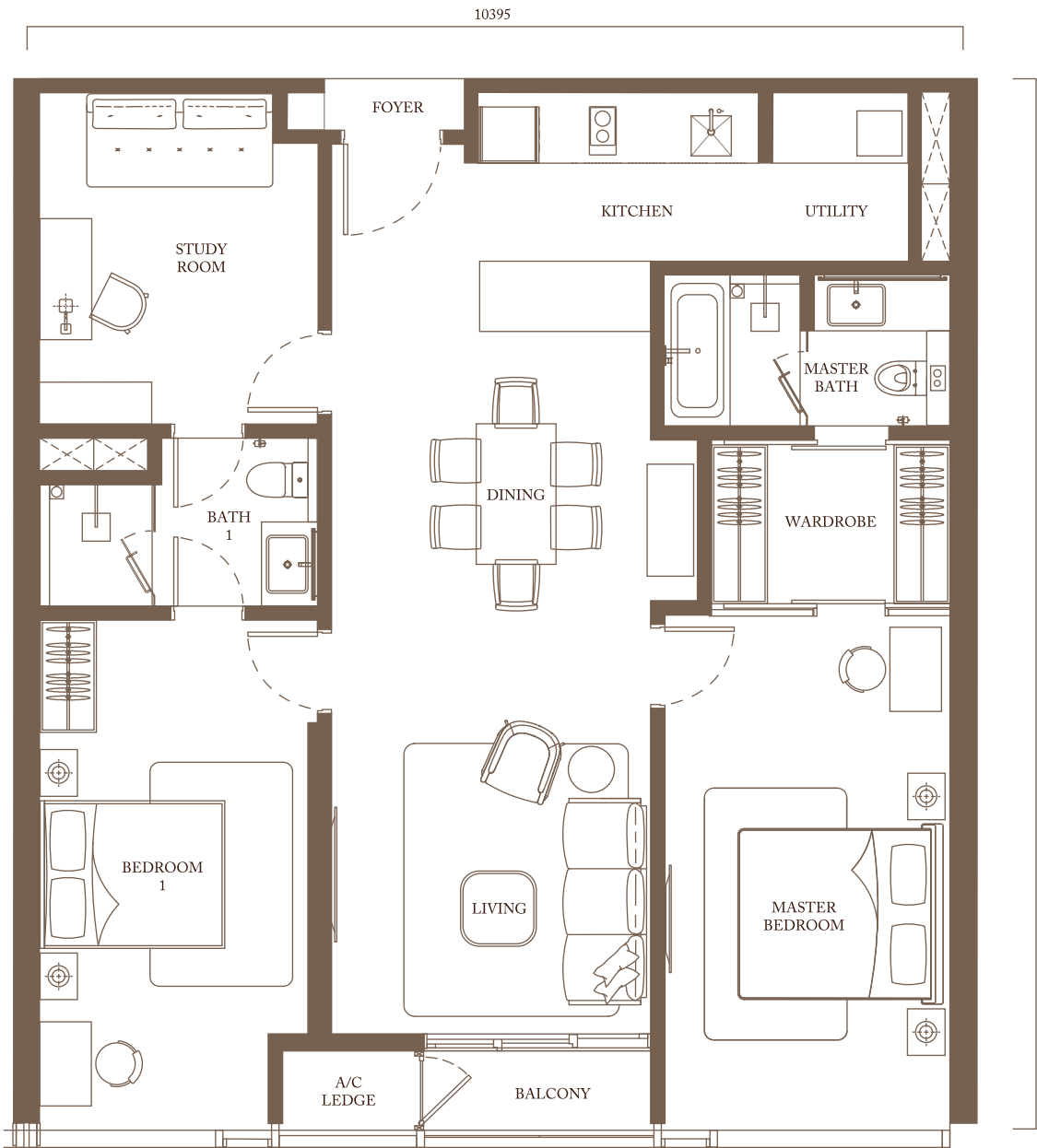




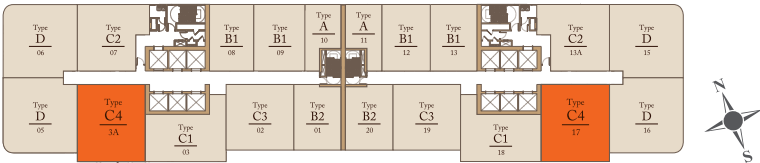
# TYPE C4

2 BEDROOMS + STUDY

1,272 sq.ft. (118.2 sq.m.)



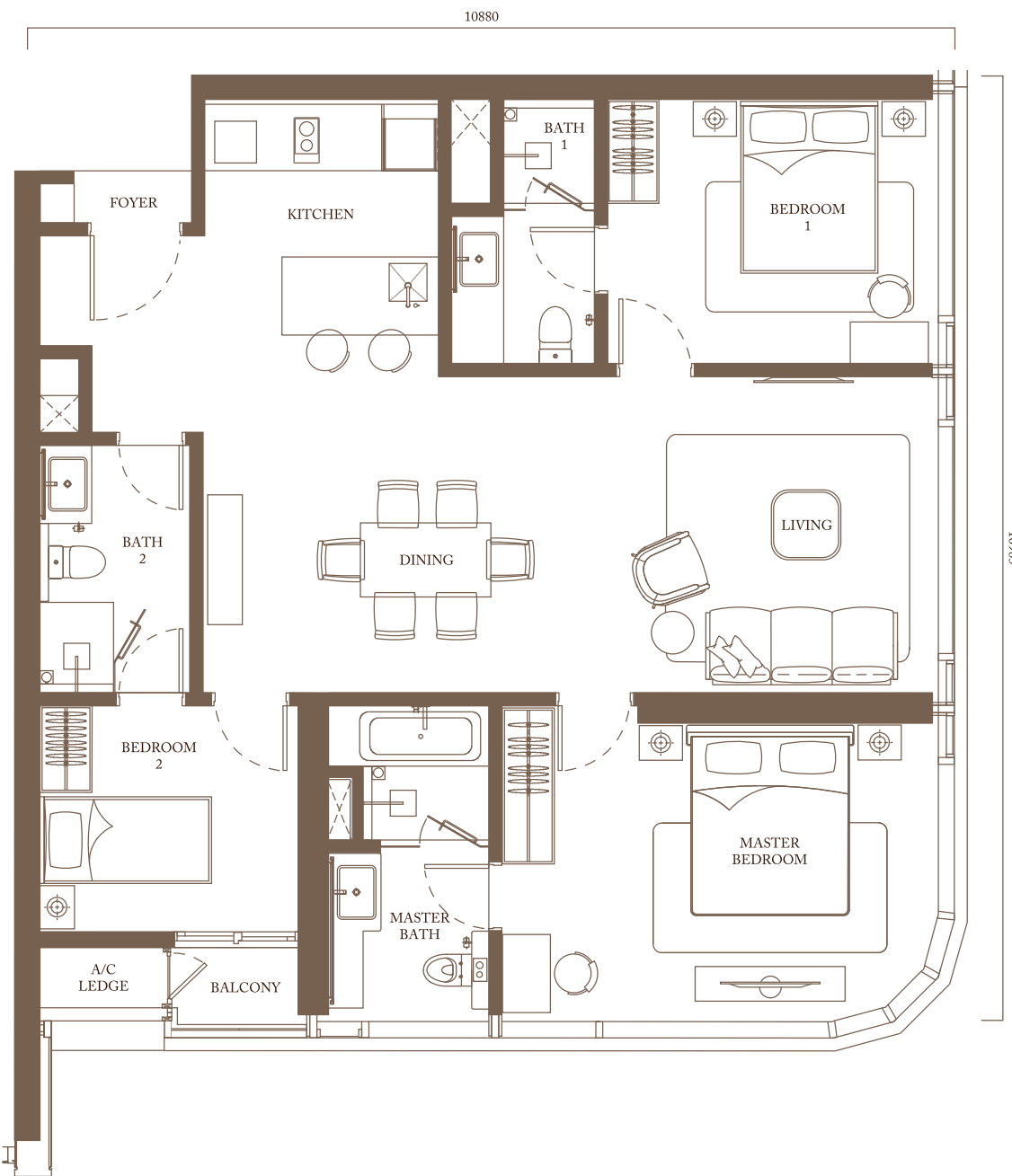
Level 13A-37 & Level 39-62



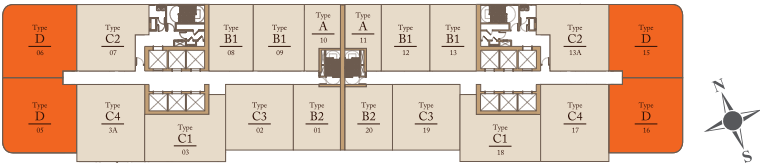
# TYPE D

3 BEDROOMS

1,255 sq.ft. (116.6 sq.m.)



Level 13A-37 & Level 39-62





ANOTHER PRESTIGIOUS PROJECT BY  
*PAVILION GROUP*



Known for its impressive collection of premium property developments, the Pavilion Group has become a household name synonymous with prestige and luxury. Pavilion Kuala Lumpur, the Pavilion Group's most distinguished development to date, has received numerous local and international awards over the years and continues to draw accolades to this day. A landmark in its own right, this iconic retail haven, which houses an array of international luxury brands and eateries, invites visitors to an unparalleled shopping experience.

---