



BM – MINES ET ENVIRONNEMENT



QUALITY – SAFETY - INTEGRITY





## ABOUT US

BM-Mines et Environnement (BM-ME) is a mining company, founded by Burkinabe promoters, established on March 29, 2024.

Its headquarters is located in Ouagadougou, Burkina Faso, Sector 54, at the following address:

c/o: 14 BP 195 Ouagadougou 14

It employs highly qualified personnel, including multidisciplinary engineers and geologists, offering a wide range of services in the mining industry.



## OURS SERVICES

- **Mine Planning: Open-pit mines and underground mines.**
- **Mining Exploration: RC Drilling and Grade Control**
- **Drilling and Blasting Operations**
- **Mineral Transportation**
- **Mine Tailings Processing**
- **Maintenance Planning**
- **Mining Machinery Safety System (AFFF System)**
- **Environmental Impact Assessment**
- **Hose Design**

## OUR MISSION



Providing:

- ✓ Professionnal services
- ✓ High-quality Services

To support new mining investors as well as those already established in Burkina Faso and Africa

➤ **Based on local expertise**



## OUR GUIDING PRINCIPLE

PROFESSIONALISM

SAFETY

INTEGRITY

QUALITY



## OUR VISION



- ✓ To become a recognized leader in advancing sustainable development in Burkina Faso and West Africa



- ✓ To ensure social harmony and prosperity





OUR EQUIPMENT

SBU 250 Drill Rig



Technical Sheet

Traction Force	26000 kgf
Downward Traction Force	18000 kgf
Air Compressor	capacity: 34 m³/min Pressure: 25 bar
Drilling Depth	RC: 600 m
Hole Diameter	RC: 140 mm

It is the most modern and efficient multipurpose drilling platform on the market.

This drilling device is suitable for rotary drilling and down-the-hole drilling using a hammer or an auger.

The standard version is designed for well drilling to a depth of approximately 400 meters and core drilling to a depth of over 1000 meters.

SANDVIC dpi 1500i Drill Rig



Technical Sheet

Hole Diameter	RC: 89 - 152 mm
Drilling Depth	60 m
Air Compressor	capacity 14 m3/min Pressure: 10 bar
Engine Power	Caterpillar C11, C13 ou C9.3B 287 kw

It is ideal for production drilling in large quarries or open-pit mines, as well as on construction sites and for wall monitoring and development work.

It offers advanced features, including drilling parameter configuration, detailed troubleshooting instructions, a revamped control system, and compatibility for remote access.

BM-ME has drilling rigs of the SANDVIC DPI 1500 model, 2023 version.

## PRD GOLD RC Drill Rig



### Technical Sheet

Traction Force	25800 kgf
Downward Traction Force	17700 kgf
Air Compressor	capacity 22 m3/min Pressure 22 bar
Drilling Depth	400 m
Hole Diameter	110 - 150 mm

The PRD brand Reverse Circulation (RC) drill rig is a robust and versatile drilling machine, ideal for large-diameter drilling in alluvial terrains.

This drill rig is designed to deliver high productivity and exceptional reliability across various drilling environments.

BM-ME has PRD brand Reverse Circulation (RC) drill rig

## LOADING AND TRANSPORTATION EQUIPMENT



**Hydraulic Excavators**



**SINOTRUK Trucks**



**Articulated Dump Trucks (ADT)**



**Tank Trucks**



**TOYOTA Land Cruiser**

## Available Equipment List

➤ 2 SANDVIK Drill Rigs

➤ 1 PRD Drill Rig

➤ 50 SINOTRUK Dump Trucks

➤ 01 CAT 974 Excavator

➤ 01 Loader

➤ 01 140K Motor Grader

➤ 01 CAT D7 Bulldozer



## OUR PROJECTS

### KARI-Pump PROJECT



We carried out the drilling of production holes with diameters ranging from 115 mm to 140 mm.

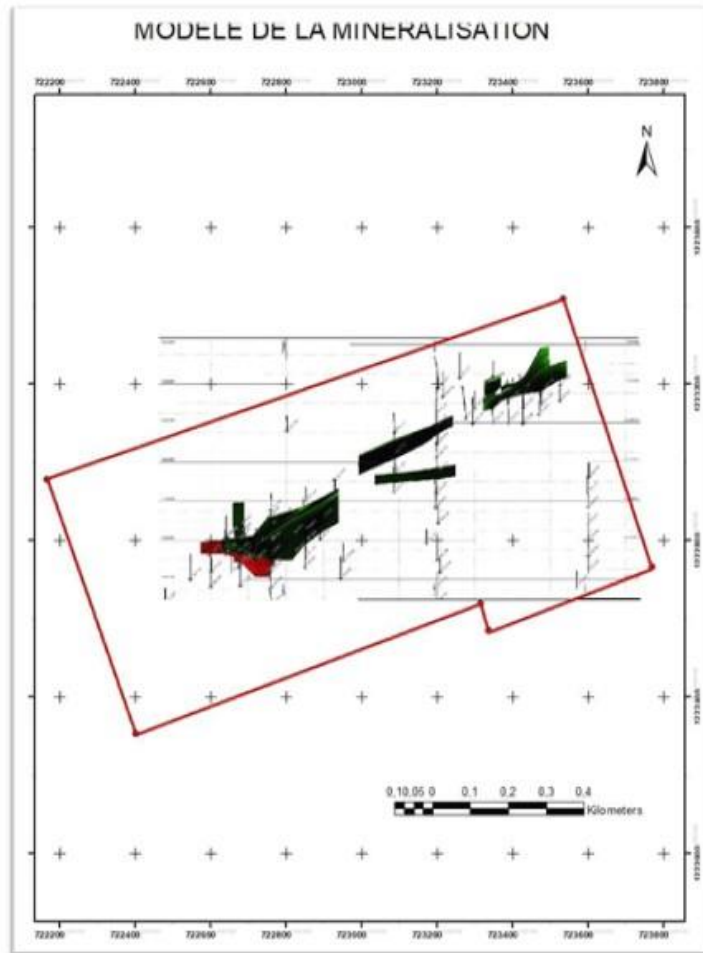
In August 2024, we joined forces with **UMG (Unified Mining Group)** to continue advancing **ENDEAVOUR MINING**'s production goals at the **Kari-Pump** pit located on their site in **Houndé**.



This project was completed in February 2025 with a total of approximately 85,000 meters drilled (115 mm, 127 mm and 140 mm).

## OUR PROJECTS

### Tiébélé Project

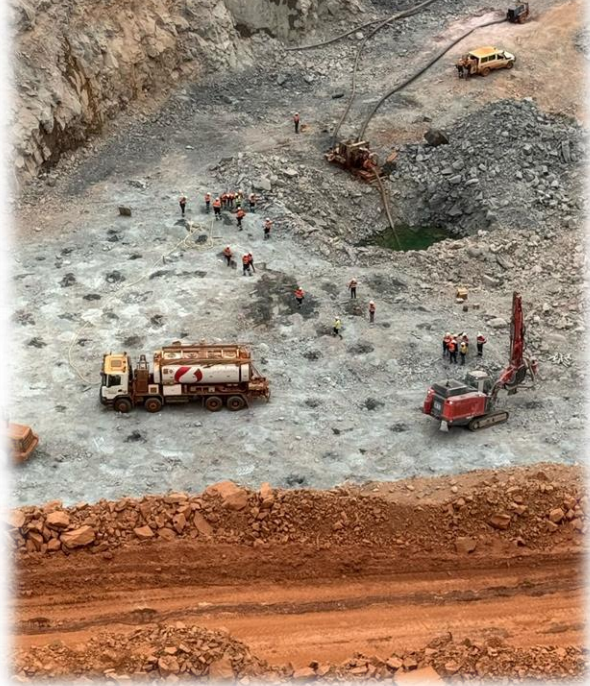


We are also present at Tiébélé Mining SARL for mine planning.

In this project, we are responsible for the design of the semi-mechanized pit, the establishment of the processing plant, and the management of mining waste.



## Nordgold Bissa Project



## OUR PROJECTS

BM-Mines et Environnement, as a committed and invested entity, actively contributes to the achievement of Nordgold's objectives in Burkina Faso.

This project focuses on the gold pits located in Bissa, Bouly, Yimiougou, Zandkom and Niou; strategic sites for growth and optimization of their mining activities.

**Two (02) SANDVIK drilling rigs** have been deployed at Bissa gold since mid-March 2025 as part of this ambitious project.



A PRD GOLD RC drill rig has also been operational on-site since July 2025.





## OURS PROJECTS

### YOUGA Project

**Soleil Ressources International** and its partners completed the acquisition of the YOUGA gold mine in the year 2024.

Guided by its core values of professionalism and integrity, **BM-Mines et Environnement** has established a strategic partnership with **Soleil Ressources International** to deliver outstanding mining services

We deployed two (02) SANDVIC drilling rigs there in July 2025 for production drilling operations.





## OUR PARTNERS



### PRIDE ENGINEERING COMPANY

PRIDE ENGINEERING COMPANY is a Russian company based in Russia, specifically in Chelyabinsk

It is an innovative industrial company specializing in the manufacturing of drilling platforms, as well as a wide range of other equipment and consumables.



PRIDE strictly monitors the materials and spare parts supplied for drilling rigs, thereby ensuring products that meet international quality standards

#### PRIDE's Main Products:

- **Portable drilling rigs**
- **Drilling rigs and augers**
- **Exploration drilling rigs**
- **Servicing rigs for oil and gas wells**

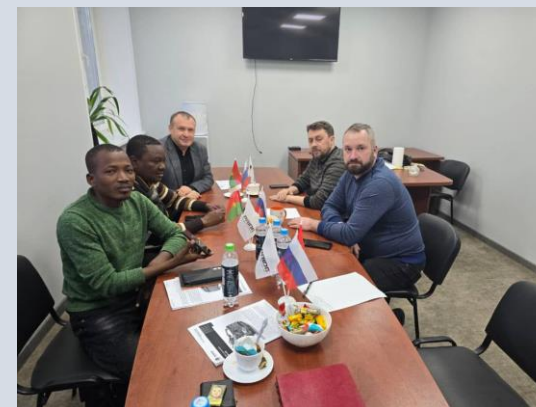
Visit

[www.dsc-pride.ru](http://www.dsc-pride.ru)

For More  
Informations



We welcome a strategic partnership between BM-ME and PRIDE ENGINEERING COMPANY, established in **February 2025**.



Through this collaboration, BM-ME and PRIDE are pushing the boundaries of what the mining industry can achieve in terms of sustainable development, operational efficiency, and environmental responsibility in Burkina Faso.

## CONTACT BM-MINES ET ENVIRONNEMENT

For any requests, please do not hesitate to contact us. Your satisfaction is our priority.



+226 70210460 / +226 64217164



+226 64217164



syam@bmmebf.com  
contact@bmme-bf.com



www.bmme-bf.com



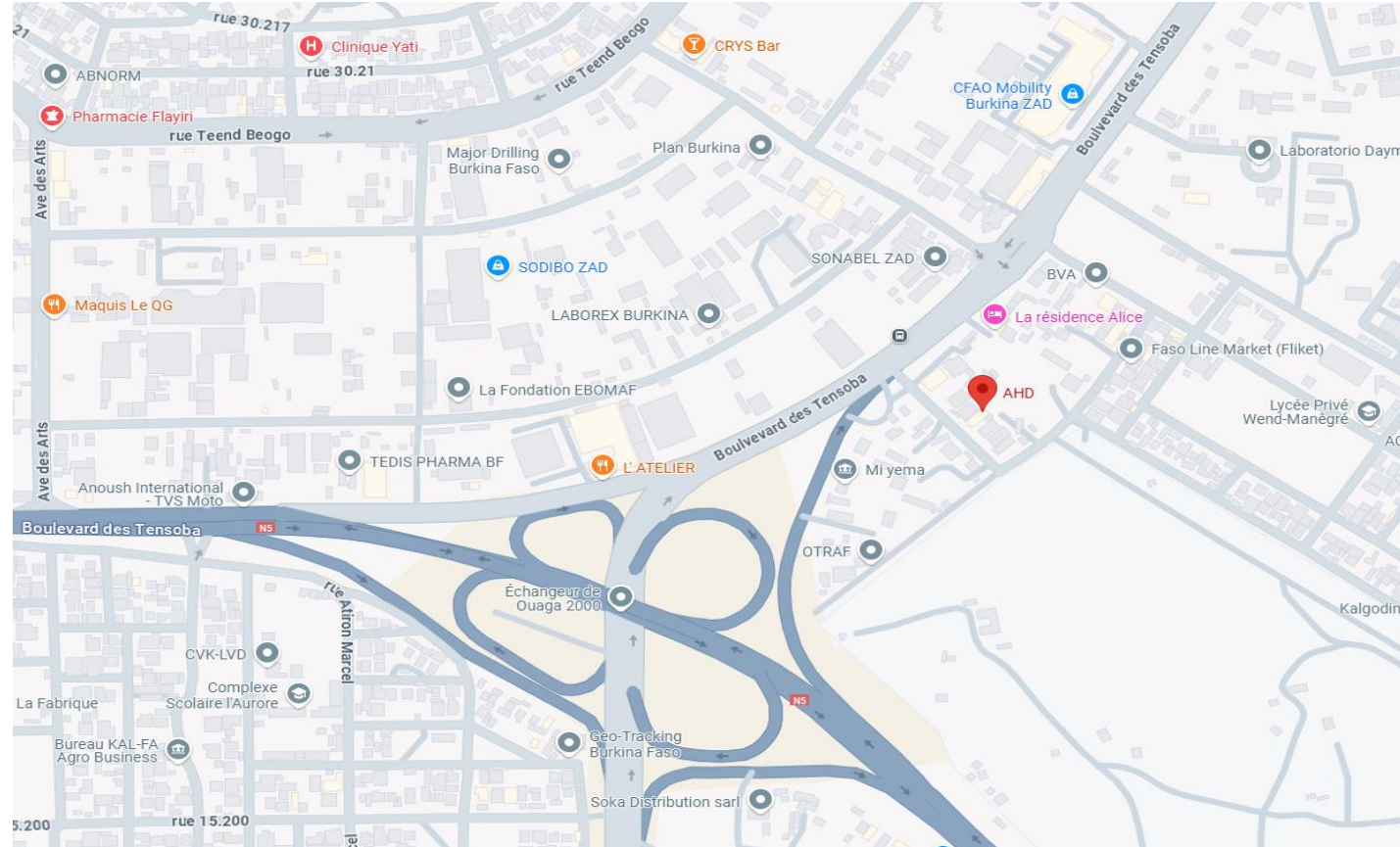
www.linkedin.com/Patrice BOUGMA



SC/ AHD 8GM2+M83 Arrêt Bus Boulevards  
des Tensoba, Karpala Ouagadougou



Monday to Friday  
08h00 AM - 05h00 PM



**BM-Mines et Environnement**

*" Your trusted partner for optimal mining performance "*