

TABLE OF CONTENTS – APPENDIX A

Appendix A –Jurisdiction Profiles.....	1
Androscoggin County.....	1
City of Auburn	32
Town of Durham	61
Town of Greene	87
Town of Leeds	122
City of Lewiston.....	148
Town of Lisbon	201
Town of Livermore	232
Town of Livermore Falls.....	258
Town of Mechanic Falls	330
Town of Minot	362
Town of Poland	403
Town of Sabattus	438
Town of Turner	479
Town of Wales	508

Appendix A –Jurisdiction Profiles

Androscoggin County

Location: Androscoggin County, incorporated in 1854, created from parts of Cumberland, Franklin, Oxford, and Lincoln Counties, with a land area of 468 square miles is the fourth smallest county in Maine. The county seat is located in the City of Auburn. Androscoggin County shares borders with Franklin County to the North, Kennebec County to the East, Sagadahoc County to the southeast, Cumberland County to the South and Oxford County to the West.

Population: According to the U.S. Census Bureau, the combined population of the two cities and 12 towns of Androscoggin County is 111,139, as of 2020. Historically, Androscoggin County's population has steadily increased with only a minor decrease in population between 1990 and 2000, due to the closure of several mills. Lewiston is the second most populated city in the State of Maine, with a population of 37,121. For a detailed breakdown of population by jurisdiction, refer to Table A3. Between 2010 and 2020 all municipalities, except for Leeds, Livermore Falls and Wales gained population. The Maine State Economist projects that Androscoggin County will continue to gradually increase in population over the coming years. Projections show a 2030 population of 113,477, which is an increase of 2,438 or 2.2%.¹

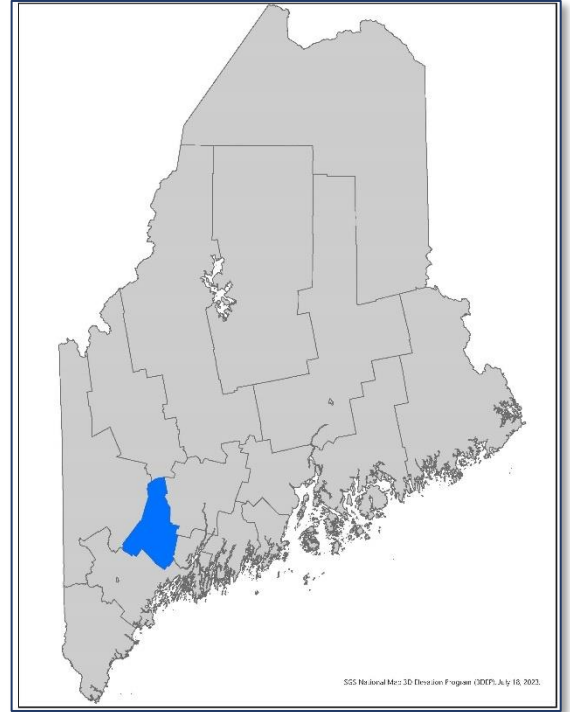


Table A1: Population of Androscoggin County and Maine 1880 - 2020

Year	Androscoggin County	Maine
1930	71,214	797,423
1940	76,679	847,226
1950	83,594	914,950
1960	86,312	970,689
1970	91,279	992,048
1980	99,657	1,124,660
1990	105,259	1,227,928
2000	103,793	1,274,923
2010	107,702	1,328,361
2020	111,139	1,362,359
1930-40 Change	7.7%	6.2%
1940-50 Change	9.0%	8.0%
1950-60 Change	3.3%	6.1%
1960-70 Change	5.8%	2.2%
1970-80 Change	9.2%	13.4%
1980-90 Change	5.6%	9.2%
1990-00 Change	-1.4%	3.8%
2000-10 Change	3.8%	4.2%
2010-20 Change	3.2%	2.6%

¹[Maine State Economist Population Outlook](#)

Source: US Census

County Demographics: The following table shows key demographic characteristics for Androscoggin County, as well as the State of Maine and the United States as a whole. Androscoggin County's population is older than the United States as a whole, but is younger than the State of Maine average, as reflected in the "Population under 18" statistic.

Table A2: Demographic Survey 2020			
Measure	Androscoggin County	Maine	United States
Population			
Total Population	111,147	1,362,359	331,449,281
Population Under 5 Years	5.8%	4.7%	5.9%
Population Under 18 Years	21.0%	18.4%	22.1%
Population 65 and Over	17.1%	20.3%	15.8%
Race - White Alone	86.9%	90.8%	61.6%
Race - Black or African American Alone	5.9%	1.9%	12.4%
Race - American Indian & Alaska Native Alone	0.4%	0.6%	1.1%
Race - Asian Alone	0.8%	1.2%	6.0%
Race - Native Hawaiian & Other Pacific Islander Alone	0.1%	0.0%	0.0%
Race - Some Other Race Alone	0.7%	0.7%	8.4%
Race - Two or More Races	5.2%	4.7%	10.2%
Housing			
Median Value of Owner-Occupied Units 2017-2021	\$175,100	\$212,500	\$244,900
Total Households 2017-2021	45,770	571,064	124,010,992
Persons per Household 2017-2021	2.34	2.31	2.80
Education			
High school graduate or higher, persons 25 and over 2017-	91.8%	93.7%	88.9%
Bachelor's degree or higher, persons 25 and over 2017-2021	22.9%	33.6%	33.7%
Economy			
In civilian labor force, population 16+, 2017-2021	64.6%	62.7%	63.1%
Mean travel time to work, minutes, workers 16+, 2017-2021	24.3	24.3	26.8
Income and Poverty			
Median household income, in 2021, dollars, 2017-2021	\$59,287	\$63,182	\$69,021
Per capita income in past 12, months, in 2021 dollars, 2017-	\$31,688	\$36,171	\$37,638
Persons in poverty, percent	14.0%	11.5%	11.6%
Geography			
Population Density (persons/sq. mi. 2020)	237.5	44.2	93.8

Source: [US Census 2020](#)

Municipal Population: The following table shows the population of the 2 cities and 12 towns of Androscoggin County. Lewiston is the second most populated city in the State of Maine, with a population of 37,121. Between 2010 and 2020 all municipalities, except for Leeds, Livermore Falls and Wales gained population.

Town	Year-Round Population 2010	Year-Round Population 2020	% Change 2010-20	Total Housing Units 2020	Occupied Housing Units 2020	% Unoccupied
Auburn	23,055	24,061	4.4%	11,000	10,030	9.7%
Durham	3,848	4,173	8.4%	1,660	1,611	3.0%
Greene	4,350	4,376	0.6%	1,958	1,747	12.1%
Leeds	2,326	2,262	-2.8%	1,053	903	16.6%
Lewiston	36,592	37,121	1.4%	16,579	15,285	8.5%
Lisbon	9,009	9,711	7.8%	4,179	3,945	5.9%
Livermore	2,095	2,127	1.5%	1,151	908	26.8%
Livermore Falls	3,187	3,060	-4.0%	1,494	1,316	13.5%
Mechanic Falls	3,031	3,107	2.5%	1,341	1,264	6.1%
Minot	2,607	2,766	6.1%	1,114	1,052	5.9%
Poland	5,376	5,906	9.9%	2,852	2,361	20.8%
Sabattus	4,876	5,044	3.4%	2,244	2,097	7.0%
Turner	5,734	5,817	1.4%	2,544	2,282	11.5%
Wales	1,616	1,608	-0.5%	668	592	12.8%

Source: US Census 2020

Changes in Development: There has been no significant change in vulnerability in Androscoggin County over the past five years. Land use within Androscoggin County ranges from urban to suburban residential areas, as well as farm and forest land. A detailed breakdown of changes in development is included in Element E – Plan Update, including the Sentinel 2 Satellite Data map, shown here. Satellite data used to assess changes in development pursued in this plan was the use of remote sensing data to estimate trends in land use changes and identify where these changes may intersect with hazard prone areas. Sentinel satellite imagery used to categorize land cover/land use type provide for change detection in global development at a 30-meter resolution over multiple years. This analysis can be replicated for any location on earth from 2017-2021.

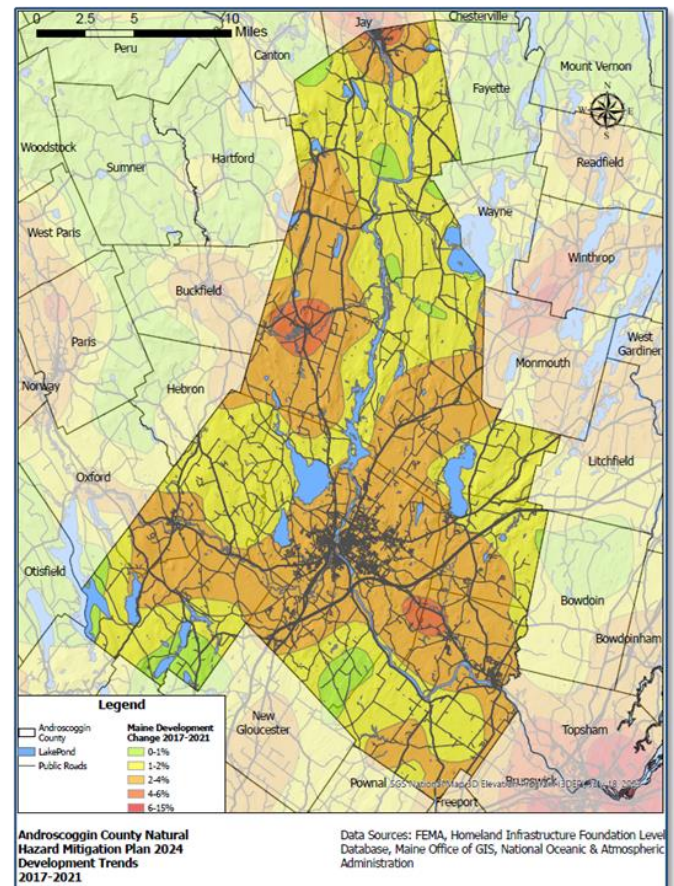


Figure A1: Changes in Development 2017-2021 using Sentinel 2 satellite data.

Economic Trends: The following are some of the economic trends in Maine which may impact Androscoggin County. These statewide trends were highlighted in the Maine Strategic Planning Summit¹ in June 2019 by the Maine State Economist, Amanda Rector.

Macroeconomic Trends in Maine

- Maine's economic growth is falling further behind the rest of New England and the US, likely due to our industry mix and demographics.
- Maine lacks a critical mass of high-growth industries that are propelling growth elsewhere in the US
- Worker productivity is improving but still much lower than the rest of country.
- Incomes and wages are lower in Maine than elsewhere in the US.
- Maine's overall poverty rate is falling, and lower than the US, but poverty is high among children and in Maine's "rim" counties.
- Maine's economy and tax revenue are highly dependent on tourism and retail, which are cyclical.
- Economic growth is increasingly concentrated around Portland and, to a lesser extent, Maine's other urban areas.
- After growing strongly in the 2000s, Maine's export growth has stalled.

Economic Sector and Cluster Trends

- Maine's healthy tourism industry provides employment and income for thousands of people, but needs more well-paying, year-round jobs.
- Health care continues to be one of Maine's largest employers, but the industry is maturing, and the pace of growth is slowing.
- Professional and business services is one of Maine's largest and fastest growing industries.
- After decades of decline, the manufacturing industry has stabilized and diversified, and is seeing pockets of growth.
- Construction employment has not returned to pre-recession levels, but those levels were likely artificially high due to the housing bubble.
- The composition of Maine's financial industry is shifting, and overall employment has fallen slightly.
- After decades of challenges, Maine's forest products industry now has high potential to modernize, diversify, and grow.
- Farming is enjoying a revival, propelled in part by increased demand for local, sustainable, and organic products.
- There is a growing cluster of locally grown beer and breweries that is attracting tourists and contributing to exports.
- Maine is a regional leader in renewable energy, but this industry needs support and stability to grow.

¹ [Maine Strategic Planning Summit Presentation](#)

Employers: According to data from the Maine Department of Labor, in the 1st quarter of 2023, the 5 largest employers in Androscoggin County were Central Maine Health Care Corporation, St. Mary's Regional Medical Center, Bates College, Wal-Mart Associates and TD Bank. Table A4 below shows the 10 largest employers in Androscoggin County.

Table A4: Androscoggin County Largest Employers by Rank 1st Quarter 2023		
Company Name	Description	Employment Range
Central Maine Healthcare Corp	General Medical and Surgical Hospitals	1,501 to 2,000
St Mary's Regional Medical Center	General Medical and Surgical Hospitals	1,001 to 1,500
Bates College	Colleges, Universities, and Professional Schools	501 to 1,000
Wal-Mart Associates Inc	General Warehousing & Storage	501 to 1,000
T D Bank N A	Telemarketing Bureaus & Other Contact Centers	1 to 500
Wal-Mart Associates Inc	Warehouse Clubs and Supercenters	1 to 500
Tambrands Inc	Sanitary Paper Product Manufacturing	1 to 500
T D Bank N A	Corporate, Subsidiary & Regional Managing Offices	1 to 500
The Dingley Press Inc	Commercial Printing (except Screen and Books)	1 to 500
VIP Discount Auto Center	Corporate, Subsidiary & Regional Managing Offices	1 to 500

[Source: Maine Center for Workforce Research and Information](#)

Transportation: Large volumes of traffic pass through Androscoggin County either to locations within or beyond the county's borders. Interstate 95 is the primary route of travel for motor vehicle traffic in Maine. Highway exits are located in Auburn, Lewiston and Sabattus, allowing for significant amounts of traffic to be brought into Androscoggin County. Androscoggin County has a bus-based mass transit system served by Western Maine Transportation, Greyhound Bus Lines and Concord Bus Lines. All 8 school districts in Androscoggin County have buses used to transport students.

- **Highways.** Androscoggin County is served by the Maine Turnpike (part of Interstate 95), with exits in Auburn, Lewiston and Sabattus. US Route 202 serves to connect the western and eastern portions of the county. Major state routes in the area include Routes 26 and 121 serving the western part of the county, Route 196 providing connections south to the Brunswick/Topsham area, Routes 126 serving the eastern towns and Route 4 serving the north. Route 4 also provides access from Franklin County to the Maine Turnpike.
- **Rail.** Androscoggin County does not currently have regular passenger rail service but does have a freight rail network with 57 grade crossings across the county. The St. Lawrence & Atlantic connects to Canada via New Hampshire, and CSX Transportation (formerly Pan Am Railways) provides connections to the southern and eastern portions of Maine.
- **Airports.** The Auburn-Lewiston Municipal Airport supports local and regional general aviation, flight training, cargo, and a large volume of corporate activity. The airport has two runways: one 5,001 feet in length and one 2,750 feet in length. The airport is owned and operated jointly by the cities of Auburn and Lewiston. The only other paved runway in Androscoggin County was the former Twitchell Airport in Turner, which closed in 2023. There are also several privately owned grass field airports that receive limited traffic in the towns of Durham, Leeds, Livermore Falls and Wales.
- **Hazardous Material Routes.** Hazardous materials are shipped throughout Androscoggin County. Routes are monitored by the State, County, and towns and will not be discussed further in this plan.

Project Worksheet: - Project Development				
Project Name:	All Hazards Risk Assessment			
Project Number:	2024-ACEMA-01			
Risk / Vulnerability				
Hazard(s) of Concern:	All Hazards include those which were identified in this Hazard Mitigation Plan			
Description of the Problem:	Continuous changes in development, climate, infrastructure, and vulnerabilities the prompts the need of jurisdictions to require risk assessments.			
Action or Project Intended for Implementation				
Description of the Solution:	Conduct the Androscoggin County All Hazards Risk Assessment to provide an overall and accurate analysis of the hazards and threats that pose the greatest risk to inform local hazard mitigation efforts utilizing most up to date resources, maps, reports, climate change modeling to allow for authorities to make informed decisions regarding development and investment in mitigation.			
Is this project related to a Critical Facility?	Yes	X	No	
Level of Protection:	High	Estimated Benefits (losses avoided):	Immeasurable	
Useful Life:	5 years	Goal(s) Met:	1	
Estimated Cost:	\$60,000	Mitigation Action Type:	Planning	
Plan for Implementation				
Prioritization:	High	Desired Timeframe for Implementation:	2 years	
Est. Time Required for Project Implementation:	2 years	Potential Funding Sources:	EMPG	
Responsible Organization:	Androscoggin County EMA	Local Planning Mechanisms to be Used in Implementation:	Hazard Mitigation planning	
Three Alternatives Considered (including No Action)				
Alternatives:	Action	Estimated Cost	Evaluation	
	No action	\$0	Issue remains	
	Hire a contractor	\$100,000	Cost prohibitive	
	Reactive planning	Immeasurable	Cost prohibitive	

Project Prioritization Worksheet: - Prioritization			
Project Name:	All Hazards Risk Assessment		
Project Number:	2024-ACEMA-01		
Criteria	Numeric Rank (-1, 0, 1)	Provide brief rationale for numeric rank when appropriate	
Life Safety	0		
Property Protection	1		
Cost-Effectiveness	1		
Technical	1		
Political	0		
Legal	1		
Fiscal	1		
Environmental	1		
Social	1		
Administrative	1		
Multi-Hazard	1		
Timeline	1		
Agency Champion	1		
Community Objectives	1		
Total	12	Priority (High/Med/Low)	High

Project Worksheet: - Project Development				
Project Name:	Continuity Planning			
Project Number:	2024-ACEMA-02			
Risk / Vulnerability				
Hazard(s) of Concern:	All Hazards include those which were identified in this Hazard Mitigation Plan			
Description of the Problem:	Impacts from hazards results in loss of power, critical infrastructures lack back up power generation causing a disruption to services.			
Action or Project Intended for Implementation				
Description of the Solution:	Assist local governments and stakeholders to develop, adopt and implement mitigation measures and secure funding to install redundant power generation systems.			
Is this project related to a Critical Facility?	Yes	X	No	
Level of Protection:	High	Estimated Benefits (losses avoided):	Immeasurable	
Useful Life:	20 years	Goal(s) Met:	2, 5	
Estimated Cost:	\$100,000	Mitigation Action Type:	Planning/infrastructure	
Plan for Implementation				
Prioritization:	High	Desired Timeframe for Implementation:	2 years	
Est. Time Required for Project Implementation:	2 years	Potential Funding Sources:	BRIC, EMPG, HMA	
Responsible Organization:	Androscoggin County EMA	Local Planning Mechanisms to be Used in Implementation:	Hazard Mitigation	
Three Alternatives Considered (including No Action)				
Alternatives:	Action	Estimated Cost	Evaluation	
	No action	\$0	Issue remains	
	Hire a contractor	\$100,000	Cost prohibitive	
	Reactive planning	Immeasurable	Cost prohibitive	

Project Prioritization Worksheet: - Prioritization			
Project Name:	Continuity Planning		
Project Number:	2024-ACEMA-02		
Criteria	Numeric Rank (-1, 0, 1)	Provide brief rationale for numeric rank when appropriate	
Life Safety	1		
Property Protection	1		
Cost-Effectiveness	1		
Technical	1		
Political	1		
Legal	1		
Fiscal	1		
Environmental	1		
Social	1		
Administrative	1		
Multi-Hazard	1		
Timeline	1		
Agency Champion	1		
Community Objectives	1		
Total	13	Priority (High/Med/Low)	High

Project Worksheet: - Project Development				
Project Name:	GIS Vulnerability Analysis			
Project Number:	2024 ACEMA 03			
Risk / Vulnerability				
Hazard(s) of Concern:	All Hazards include those which were identified in this Hazard Mitigation Plan,			
Description of the Problem:	Androscoggin County lacks a uniform and comprehensive database of critical infrastructure facilities and vulnerabilities			
Action or Project Intended for Implementation				
Description of the Solution:	ACEMA will develop a comprehensive uniform vulnerability analysis to identify critical infrastructure in hazard prone areas to inform mitigation planning for Androscoggin County utilizing GIS.			
Is this project related to a Critical Facility?	Yes	X	No	
Level of Protection:	High	Estimated Benefits (losses avoided):	Immeasurable	
Useful Life:	5 years	Goal(s) Met:	1, 3	
Estimated Cost:	\$40,000	Mitigation Action Type:	Planning	
Plan for Implementation				
Prioritization:	High	Desired Timeframe for Implementation:	1 year	
Est. Time Required for Project Implementation:	1 year	Potential Funding Sources:	EMPG	
Responsible Organization:	Androscoggin County EMA	Local Planning Mechanisms to be Used in Implementation:	Hazard Mitigation	
Three Alternatives Considered (including No Action)				
Alternatives:	Action	Estimated Cost	Evaluation	
	No action	\$0	Issue remains	
	Hire a contractor	\$100,000	Cost prohibitive	
	Reactive planning	Immeasurable	Cost prohibitive	

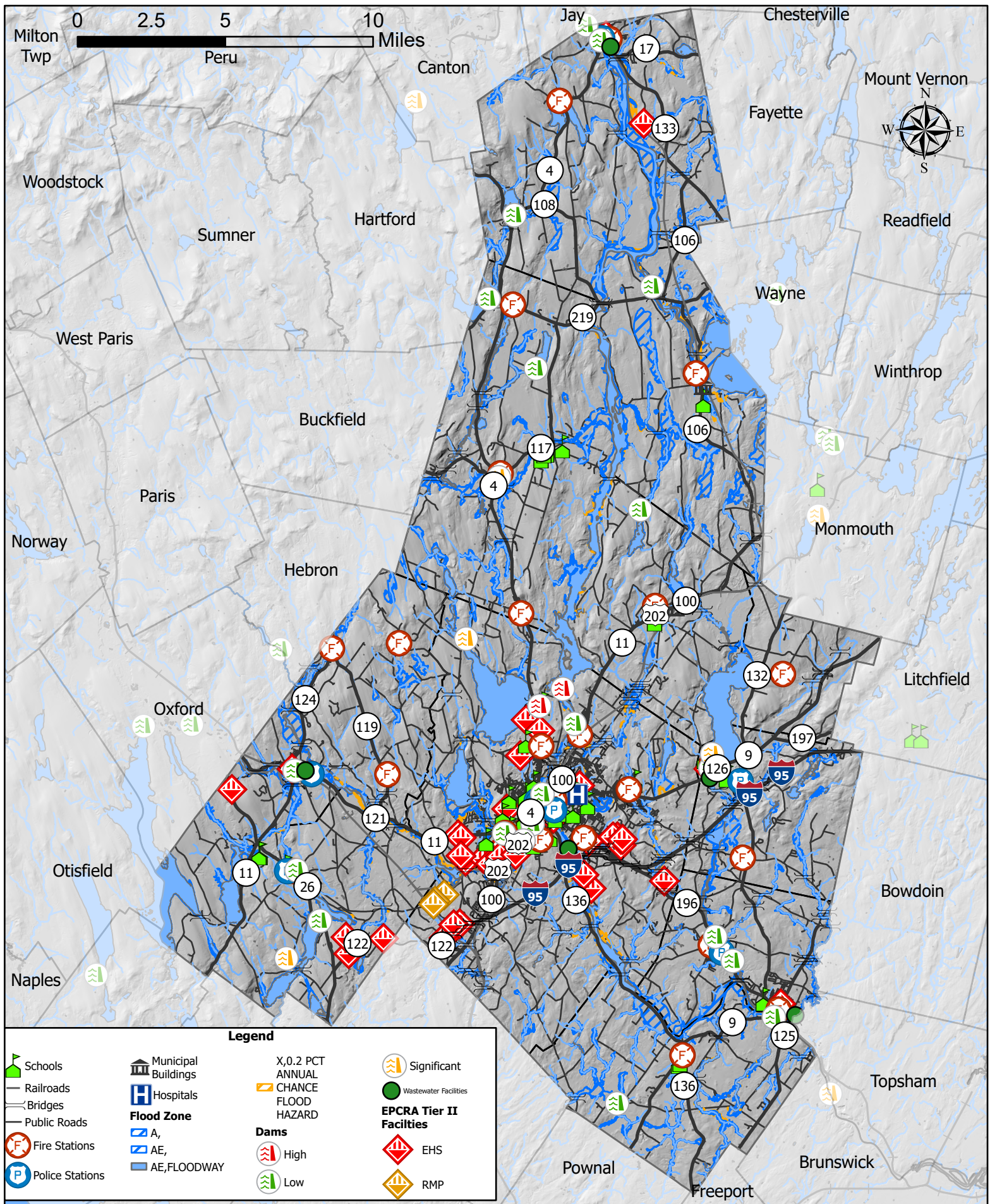
Project Prioritization Worksheet: - Prioritization			
Project Name:	GIS Vulnerability Analysis		
Project Number:	2024 ACEMA 03		
Criteria	Numeric Rank (-1, 0, 1)	Provide brief rationale for numeric rank when appropriate	
Life Safety	0		
Property Protection	1		
Cost-Effectiveness	1		
Technical	1		
Political	0		
Legal	1		
Fiscal	1		
Environmental	1		
Social	1		
Administrative	1		
Multi-Hazard	1		
Timeline	1		
Agency Champion	1		
Community Objectives	1		
Total	12	Priority (High/Med/Low)	High

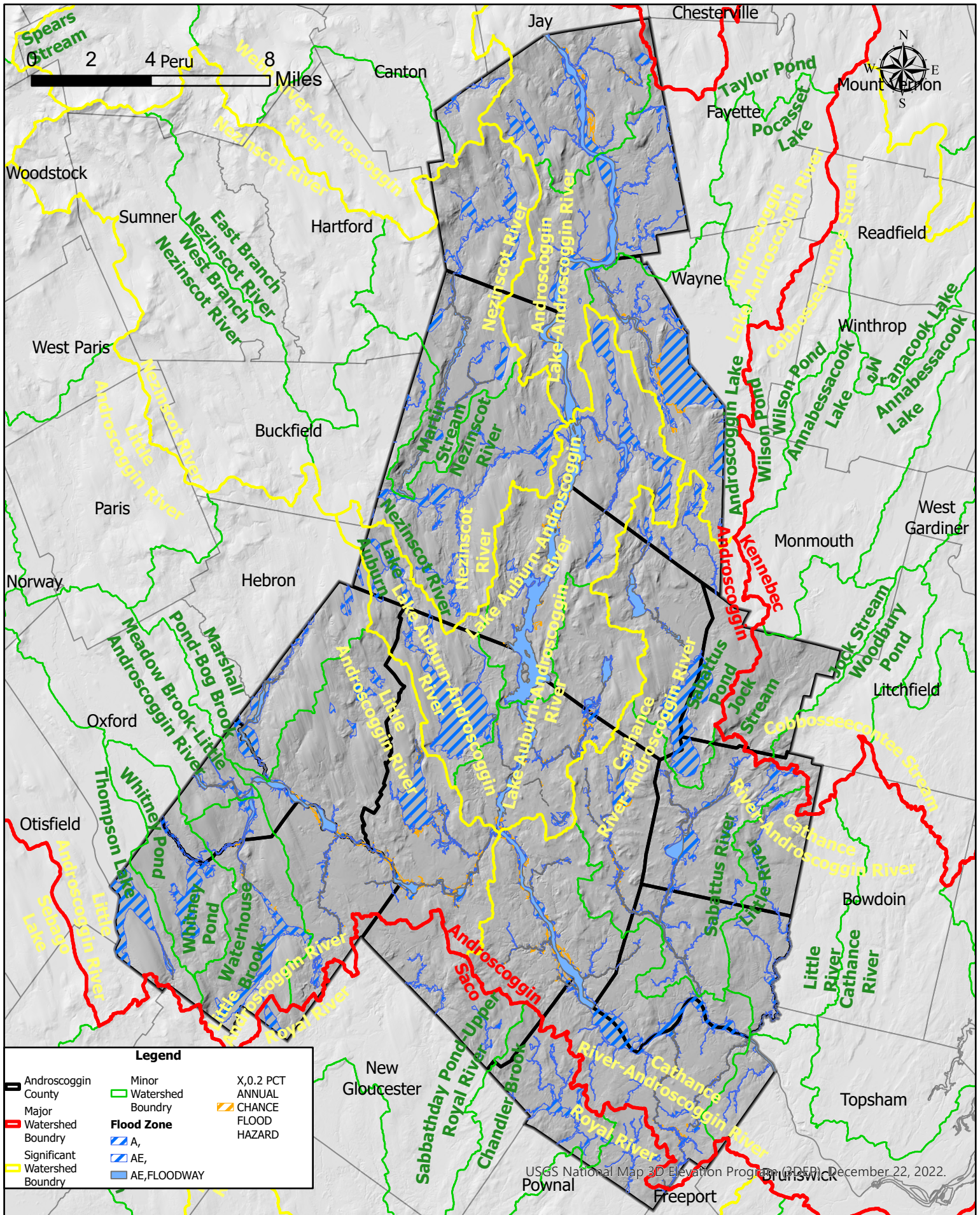
Project Worksheet: - Project Development				
Project Name:	Outreach and Public Education			
Project Number:	2024-ACEMA-04			
Risk / Vulnerability				
Hazard(s) of Concern:	All Hazards include those which were identified in this Hazard Mitigation Plan			
Description of the Problem:	Limited knowledge with regards to hazard mitigation, funding opportunities, climate change and associated impacts from identified hazards to vulnerabilities in Androscoggin County for the public, jurisdictions, and stakeholder.			
Action or Project Intended for Implementation				
Description of the Solution:	ACEMA will strengthen understanding of hazard mitigation, funding opportunities, climate change and associated impacts from identified hazards to vulnerabilities through workshops, seminars, trainings, and webinars by collaborating with subject matter experts, at local, regional, state, and federal levels.			
Is this project related to a Critical Facility?	Yes		No	X
Level of Protection:	High	Estimated Benefits (losses avoided):	Immeasurable	
Useful Life:	5 years	Goal(s) Met:	1	
Estimated Cost:	\$20,000	Mitigation Action Type:	Planning	
Plan for Implementation				
Prioritization:	High	Desired Timeframe for Implementation:	1 year	
Est. Time Required for Project Implementation:	1 year	Potential Funding Sources:	EMPG	
Responsible Organization:	Androscoggin County EMA	Local Planning Mechanisms to be Used in Implementation:	Hazard Mitigation	
Three Alternatives Considered (including No Action)				
Alternatives:	Action	Estimated Cost	Evaluation	
	No action	\$0	Issue remains	
	Hire a contractor	\$100,000	Cost prohibitive	
	Reactive planning	Immeasurable	Cost prohibitive	

Project Prioritization Worksheet: - Prioritization			
Project Name:	Outreach and Public Education		
Project Number:	2024-ACEMA-04		
Criteria	Numeric Rank (-1, 0, 1)	Provide brief rationale for numeric rank when appropriate	
Life Safety	0		
Property Protection	1		
Cost-Effectiveness	1		
Technical	1		
Political	0		
Legal	1		
Fiscal	1		
Environmental	1		
Social	1		
Administrative	1		
Multi-Hazard	1		
Timeline	1		
Agency Champion	1		
Community Objectives	1		
Total	12	Priority (High/Med/Low)	High

Project Worksheet: - Project Development				
Project Name:	Economic Resiliency Planning			
Project Number:	2024-ACEMA-05			
Risk / Vulnerability				
Hazard(s) of Concern:	All Hazards include those which were identified in this Hazard Mitigation Plan			
Description of the Problem:	Impacts from hazards results in loss of power, potential physical damage to roadway and buildings, stakeholders lack planning capabilities to address participation in programs that would enhance resiliency and recovery.			
Action or Project Intended for Implementation				
Description of the Solution:	Assist with economic development and comprehensive planning, risk-informed zoning ordinances, building code modeling education and increase Community Rating System participation to enhance economic resilience and mitigation.			
Is this project related to a Critical Facility?	Yes	X	No	
Level of Protection:	High	Estimated Benefits (losses avoided):	Immeasurable	
Useful Life:	10 years	Goal(s) Met:	1, 2, 5	
Estimated Cost:	\$60,000	Mitigation Action Type:	Planning	
Plan for Implementation				
Prioritization:	High	Desired Timeframe for Implementation:	2 years	
Est. Time Required for Project Implementation:	2 years	Potential Funding Sources:	EMPG, BRIC, FMA	
Responsible Organization:	Androscoggin County EMA	Local Planning Mechanisms to be Used in Implementation:	Hazard mitigation	
Three Alternatives Considered (including No Action)				
Alternatives:	Action	Estimated Cost	Evaluation	
	No action	\$0	Issue remains	
	Hire a contractor	\$100,000	Cost prohibitive	
	Reactive planning	Immeasurable	Cost prohibitive	

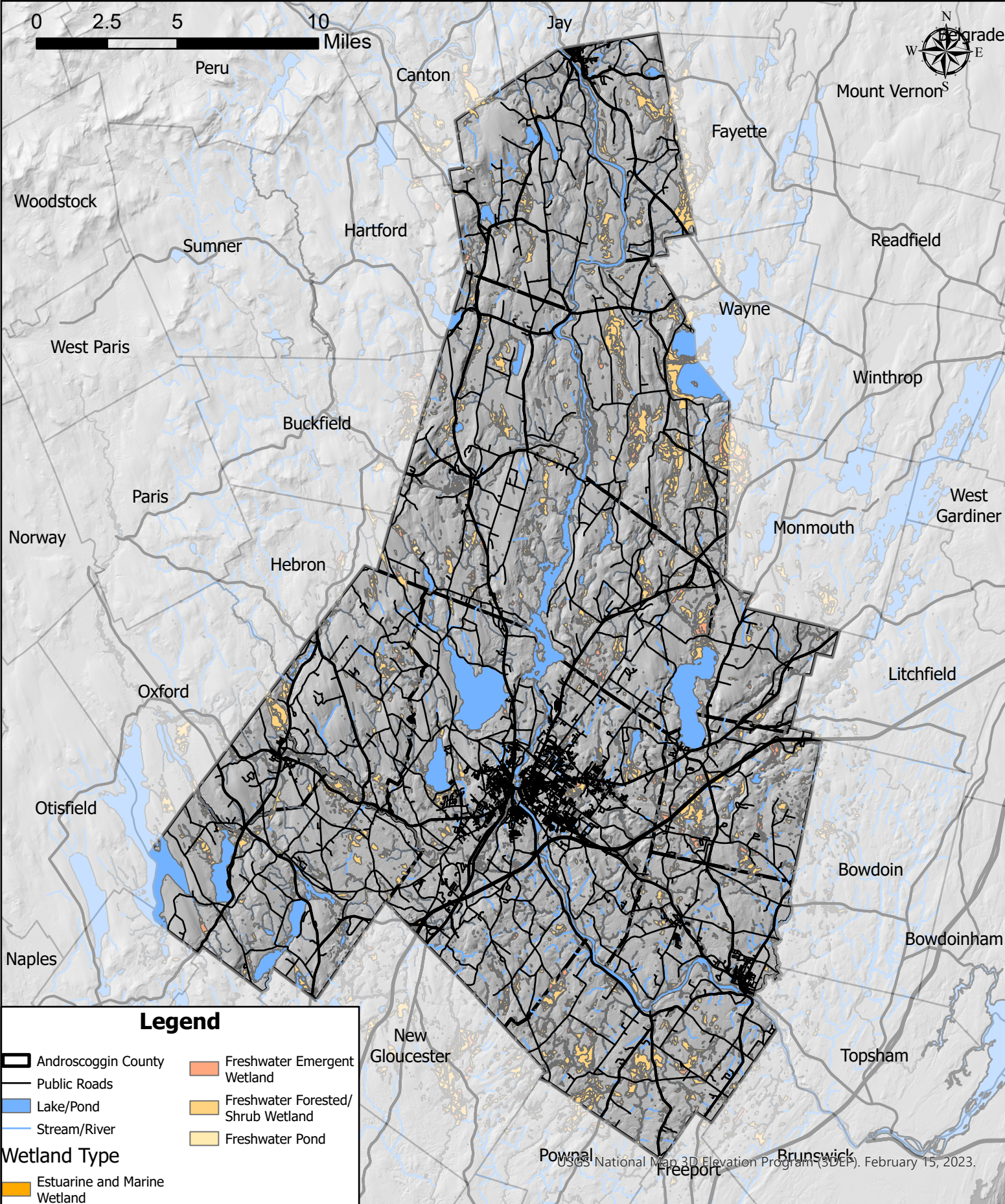
Project Prioritization Worksheet: - Prioritization			
Project Name:	Economic Resiliency Planning		
Project Number:	2024-ACEMA-05		
Criteria	Numeric Rank (-1, 0, 1)	Provide brief rationale for numeric rank when appropriate	
Life Safety	1		
Property Protection	1		
Cost-Effectiveness	1		
Technical	1		
Political	1		
Legal	1		
Fiscal	1		
Environmental	1		
Social	1		
Administrative	1		
Multi-Hazard	1		
Timeline	1		
Agency Champion	1		
Community Objectives	1		
Total	13	Priority (High/Med/Low)	High





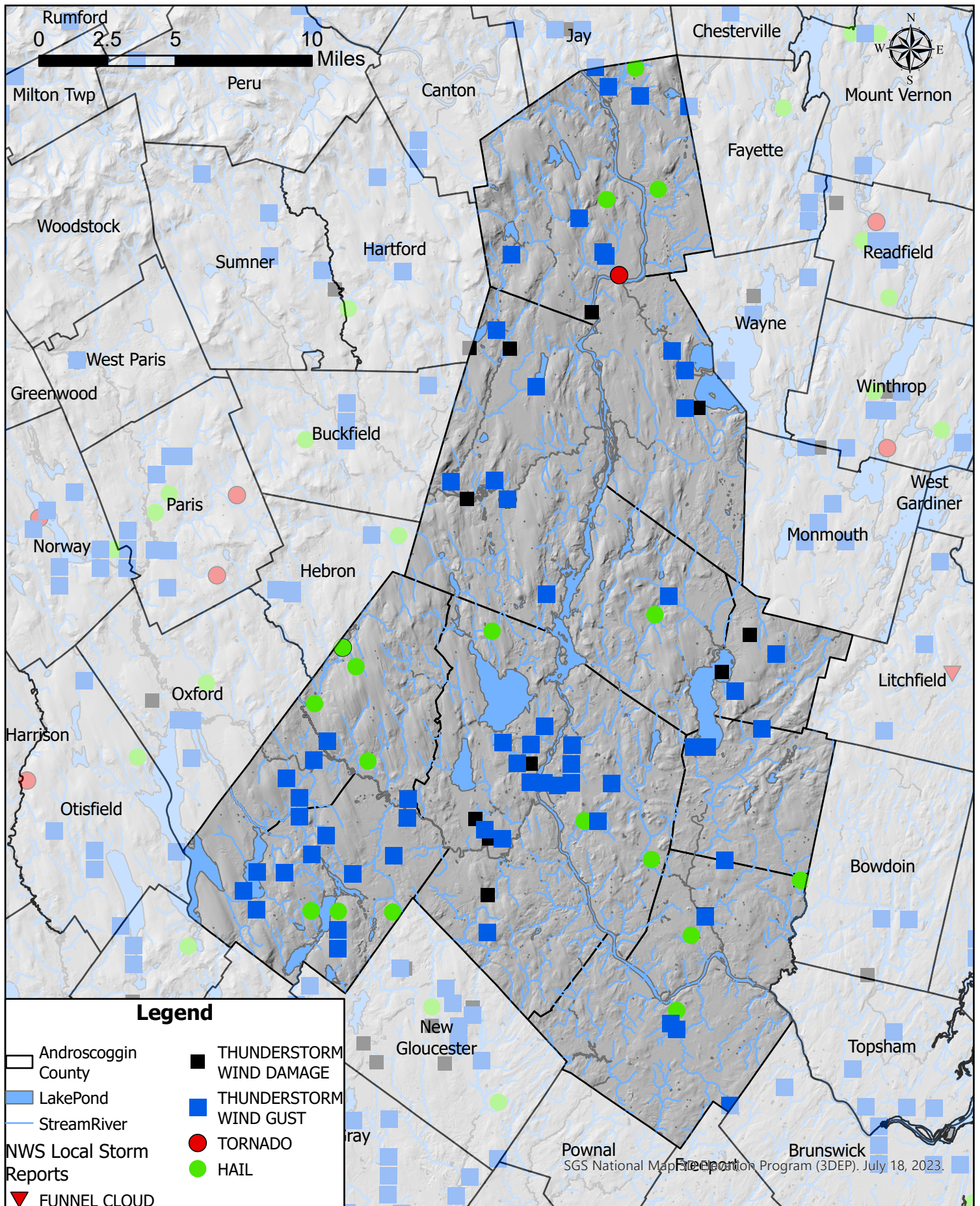
Androscoggin County Hazard Mitigation Plan 2024 Watershed Map

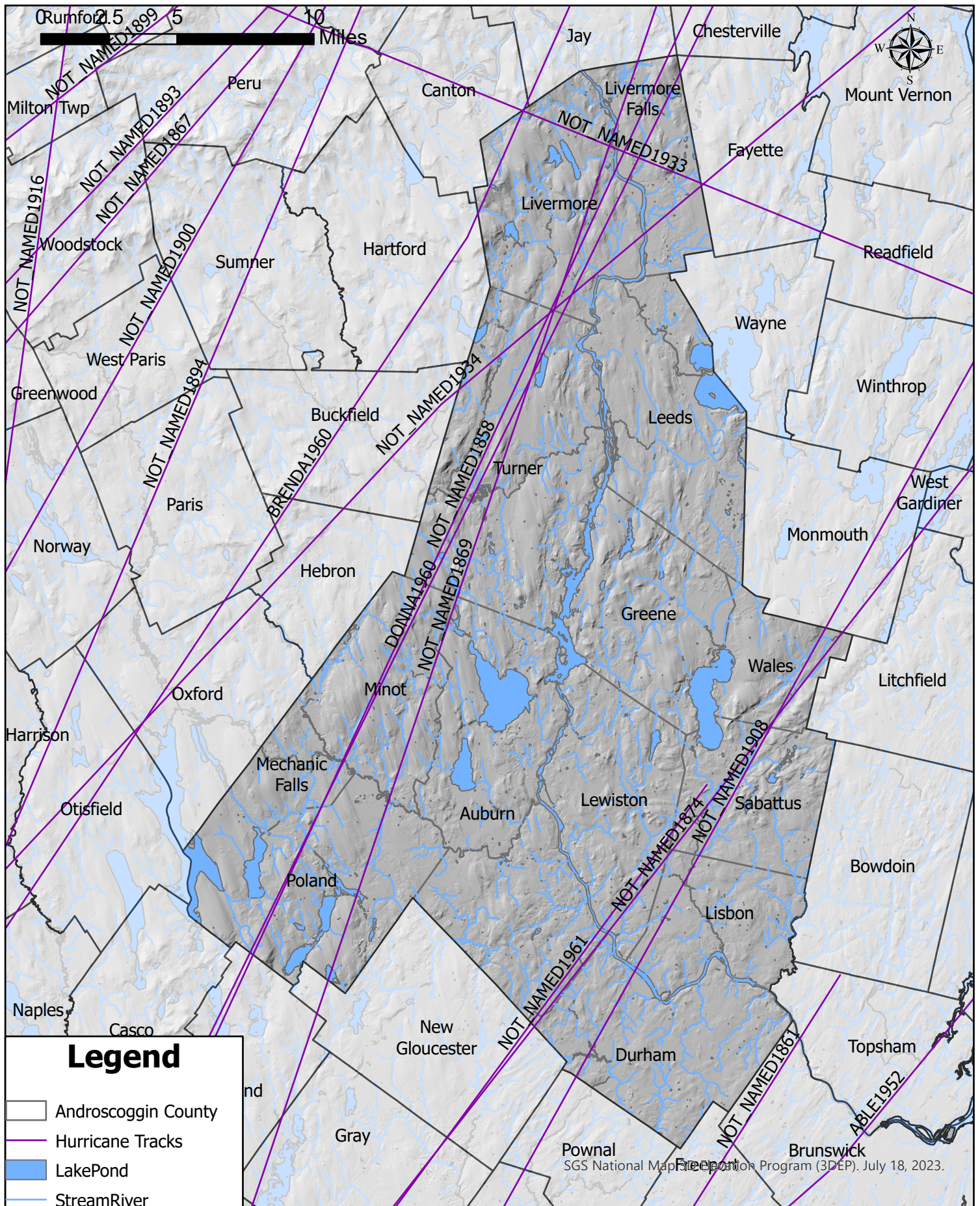
Sources: FEMA National Flood Hazard Layer (NFHL), Maine Office of GIS

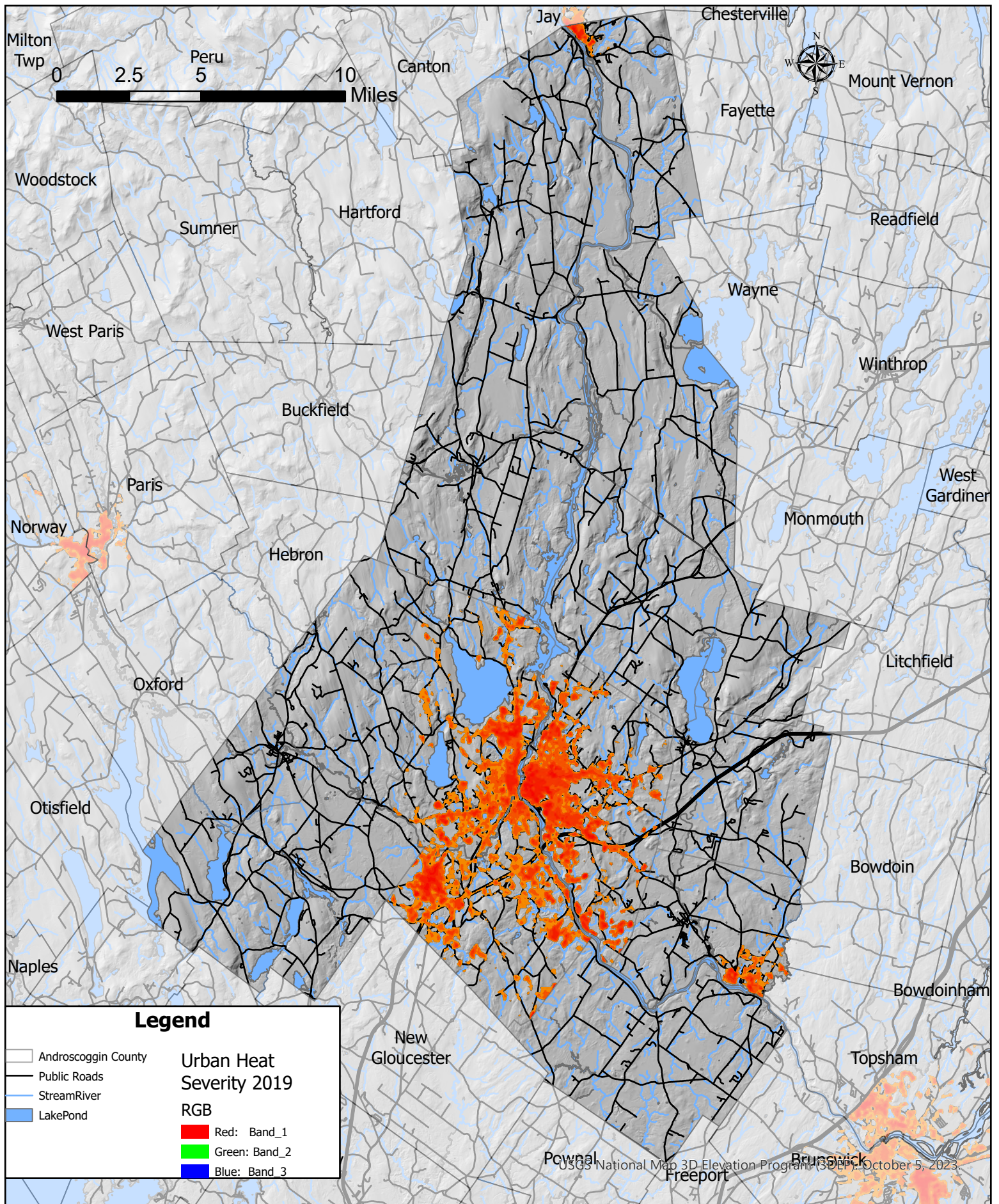


Androscoggin County Hazard Mitigation Plan 2024
Wetland Areas

Data Sources: Maine Office of GIS, US Fish and Wildlife Service, US Geological Survey

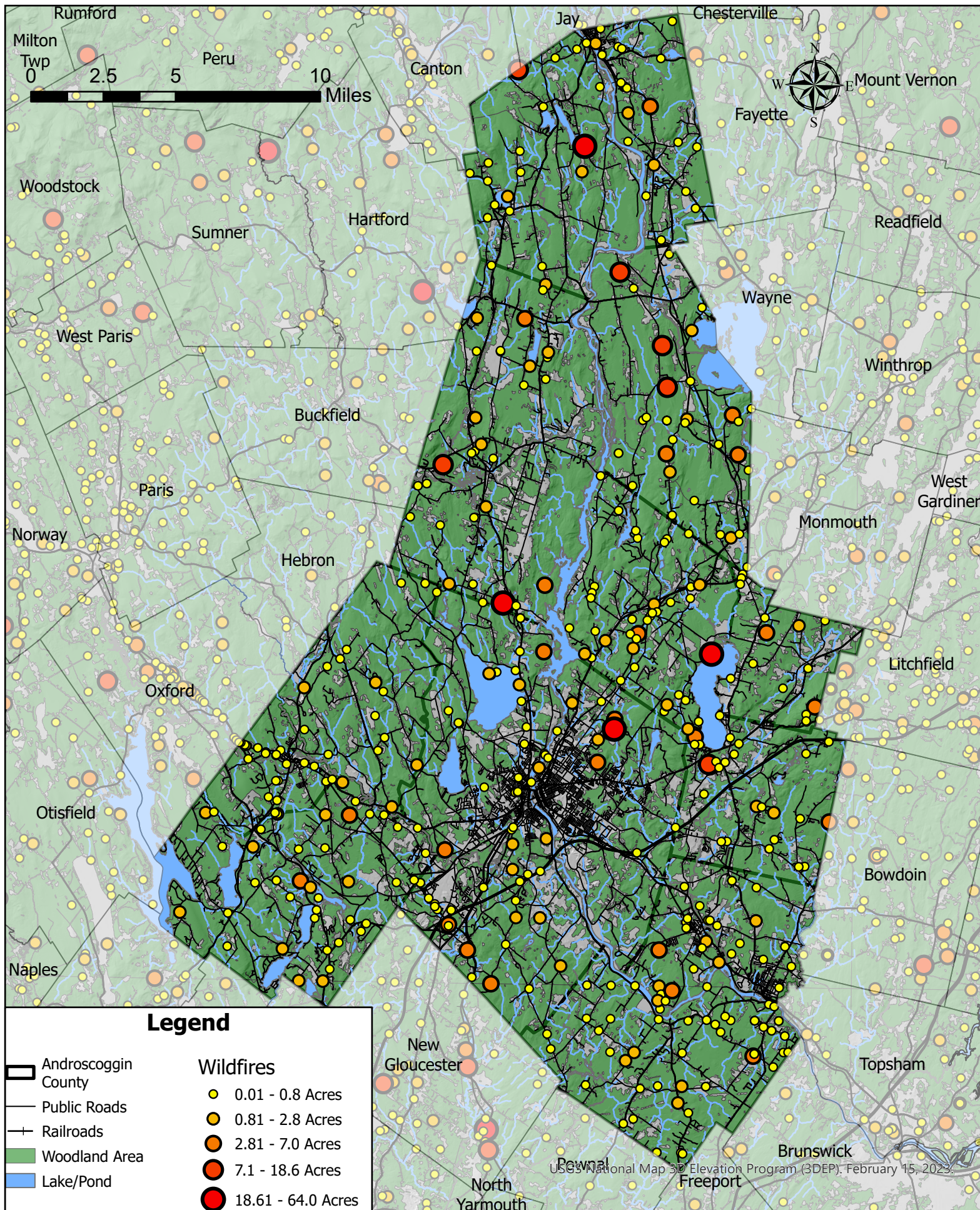


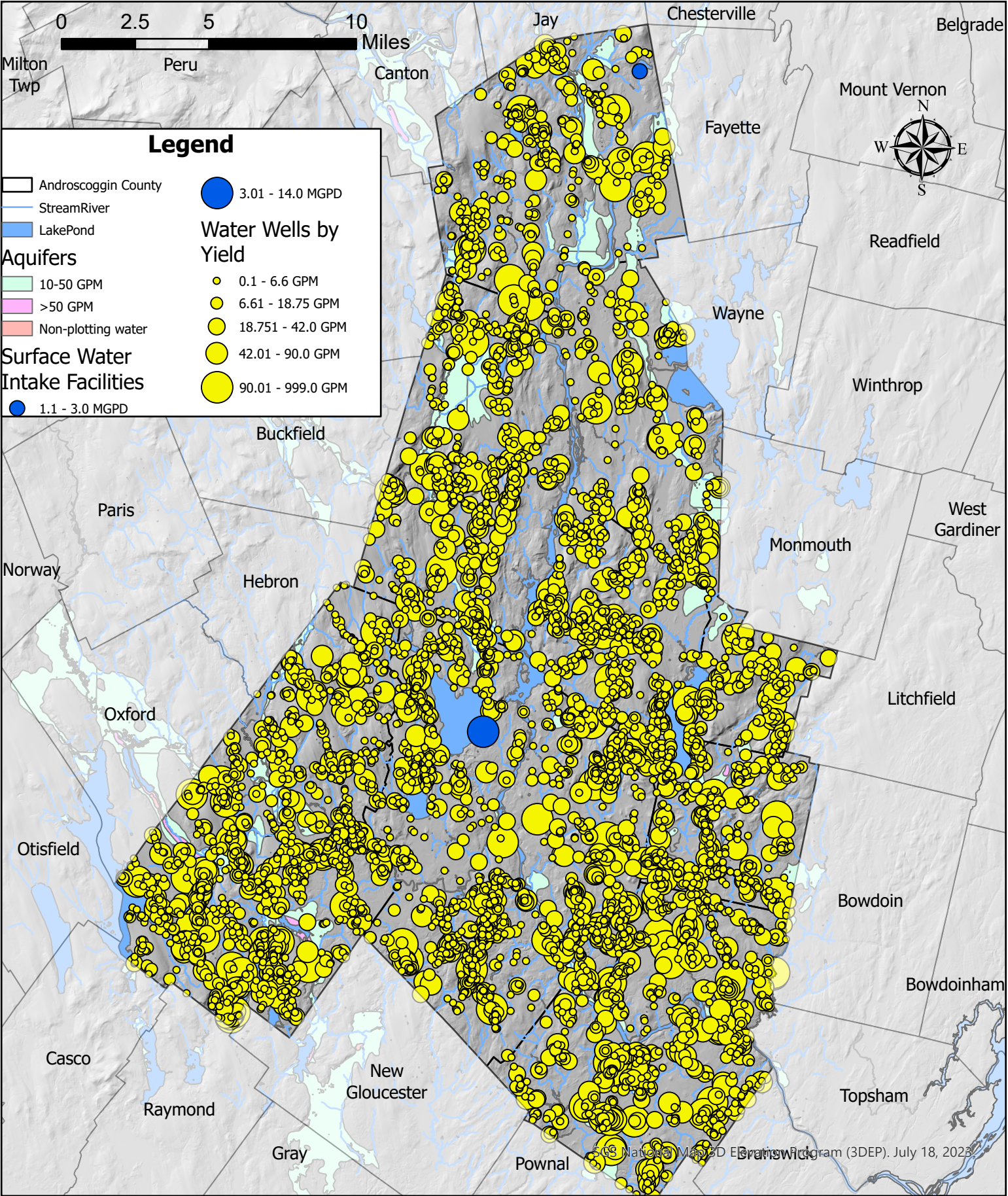




**Androscoggin County Natural
Hazard Mitigation Plan 2024 Update
Urban Heat Severity Map**

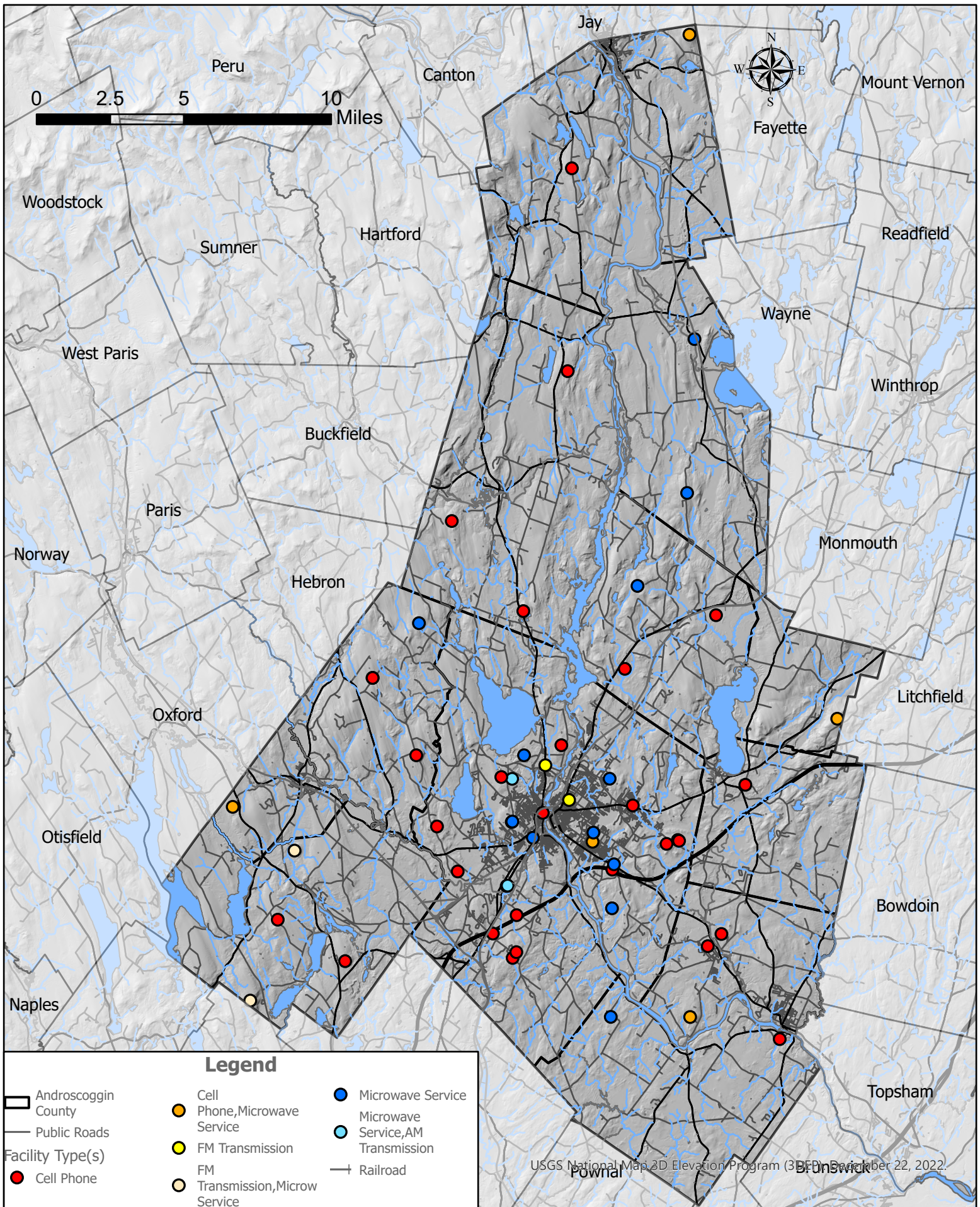
Sources: FEMA National Flood Hazard Layer, Homeland Infrastructure Foundation Level Database (HIFLD), Maine Office of GIS, The Trust for Public Land





Androscoggin County Hazard Mitigation Plan 2024
Water Sources Map

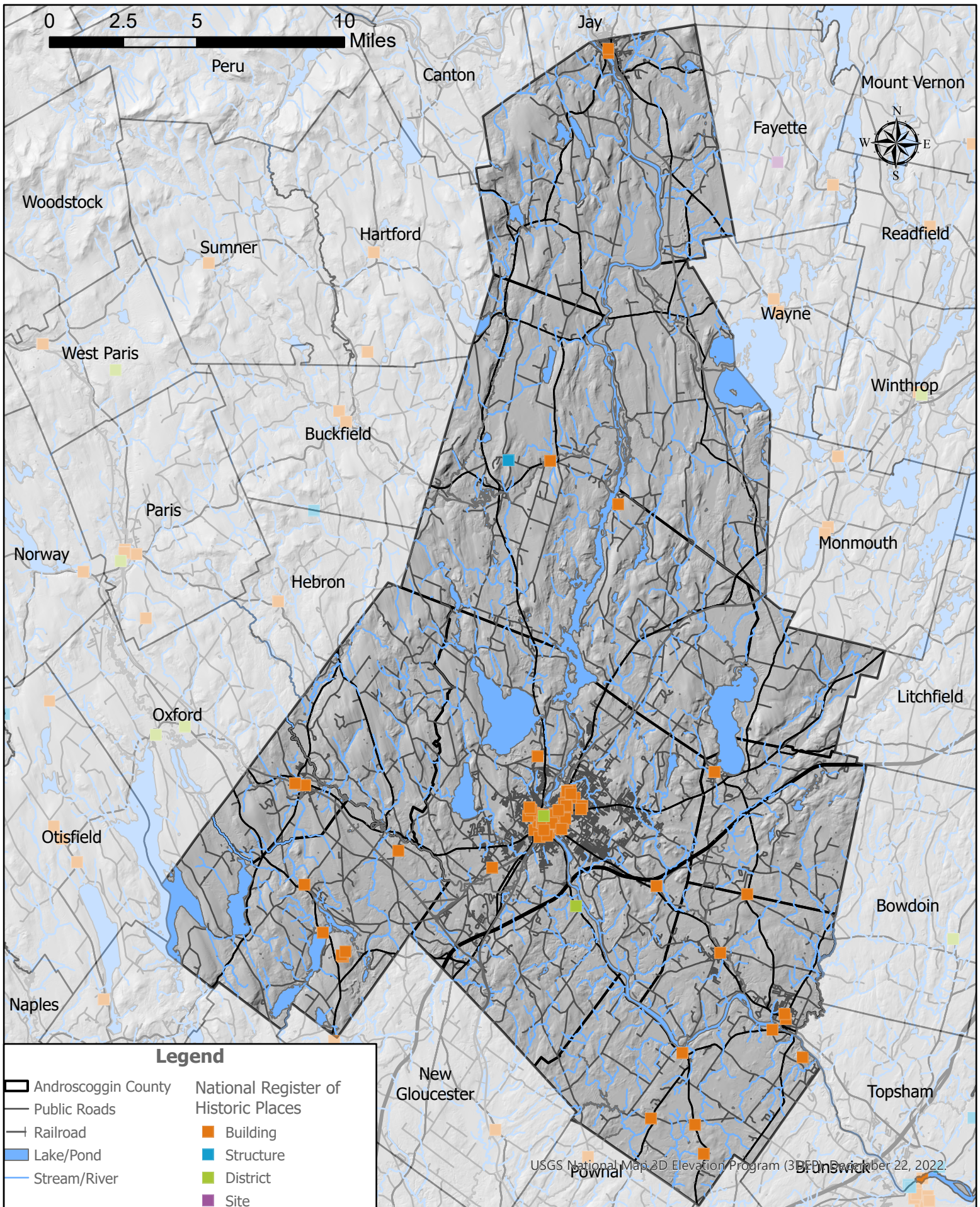
Data Sources: Maine Geological Survey: Homeland Infrastructure Foundation Level Database, Maine Office of GIS, Maine Drinking Water Program, Androscoggin County Emergency Management Agency

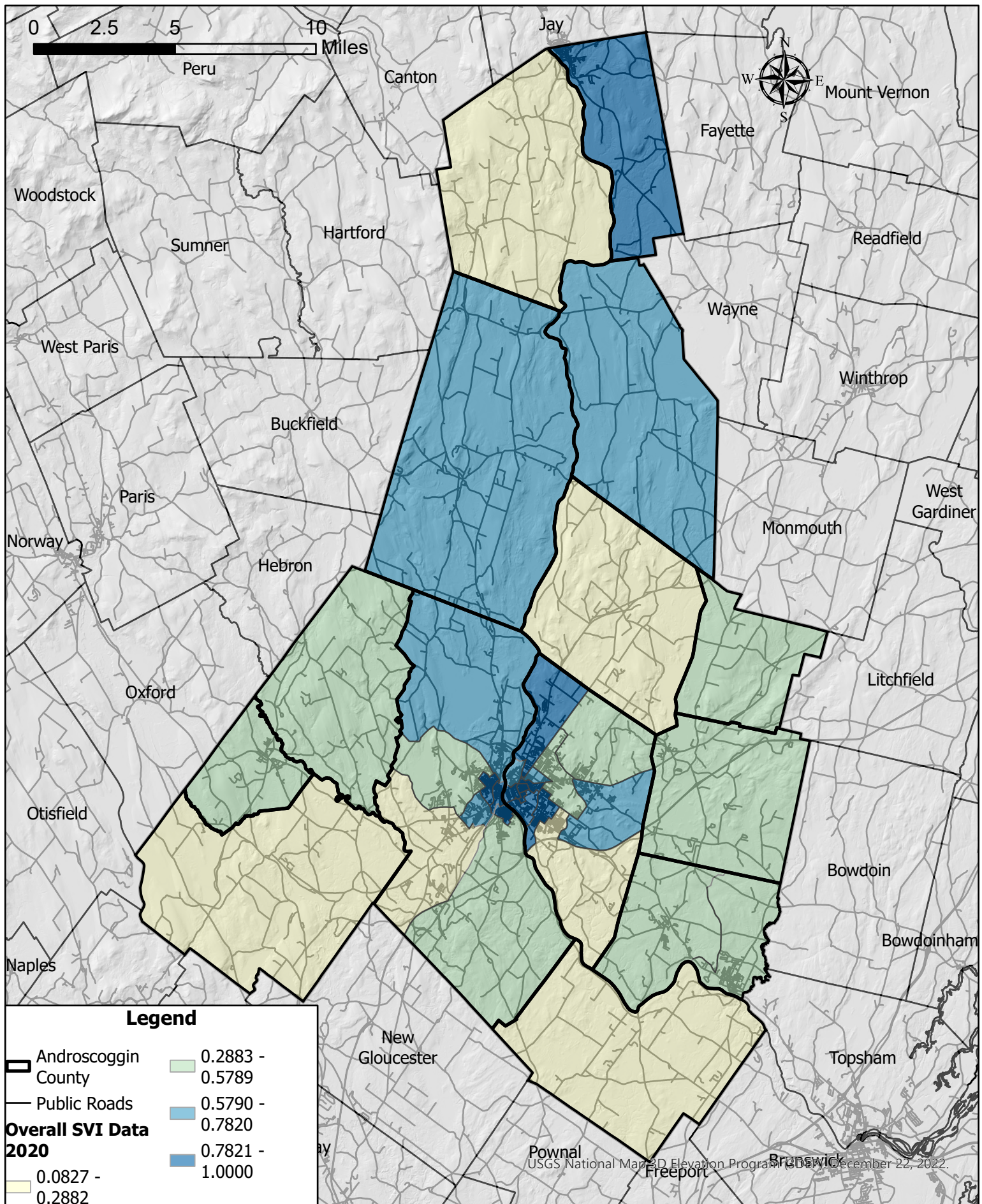


Communication Towers

Androscoggin County Hazard Mitigation Plan

Data Sources: U.S. Geological Survey, Homeland Infrastructure Foundation Level Database, Maine Office of GIS, Androscoggin County Emergency Management Agency

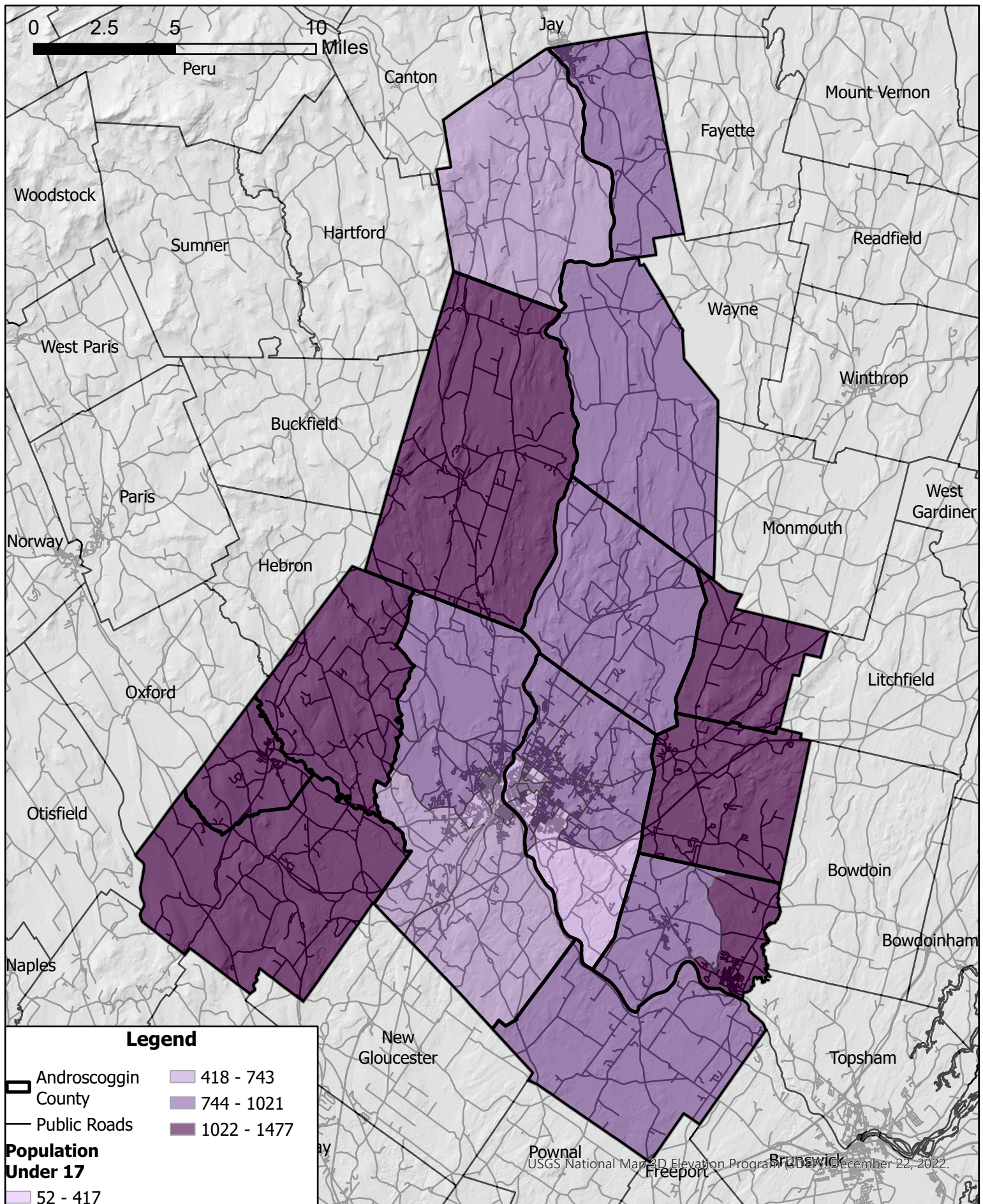




**Androscoggin County
Social Vulnerability Index Data 2020
By Census Tract**

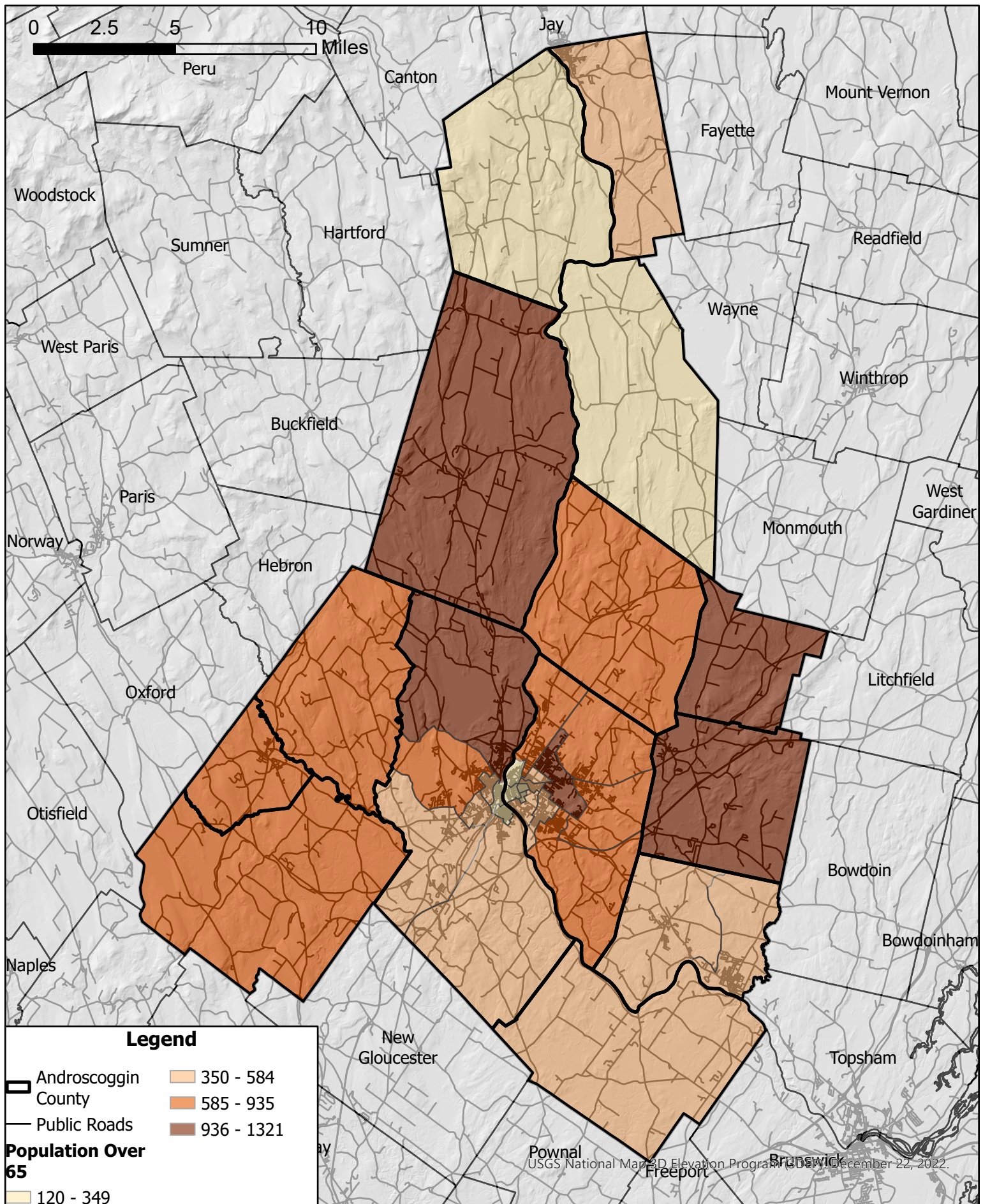
Note: Social Vulnerability is based on 16 variables selected by the CDC, SVI values closer to 1 are considered more Socially Vulnerable

Data Sources: CDC/ATSDR Social Vulnerability Index, Maine Office of GIS



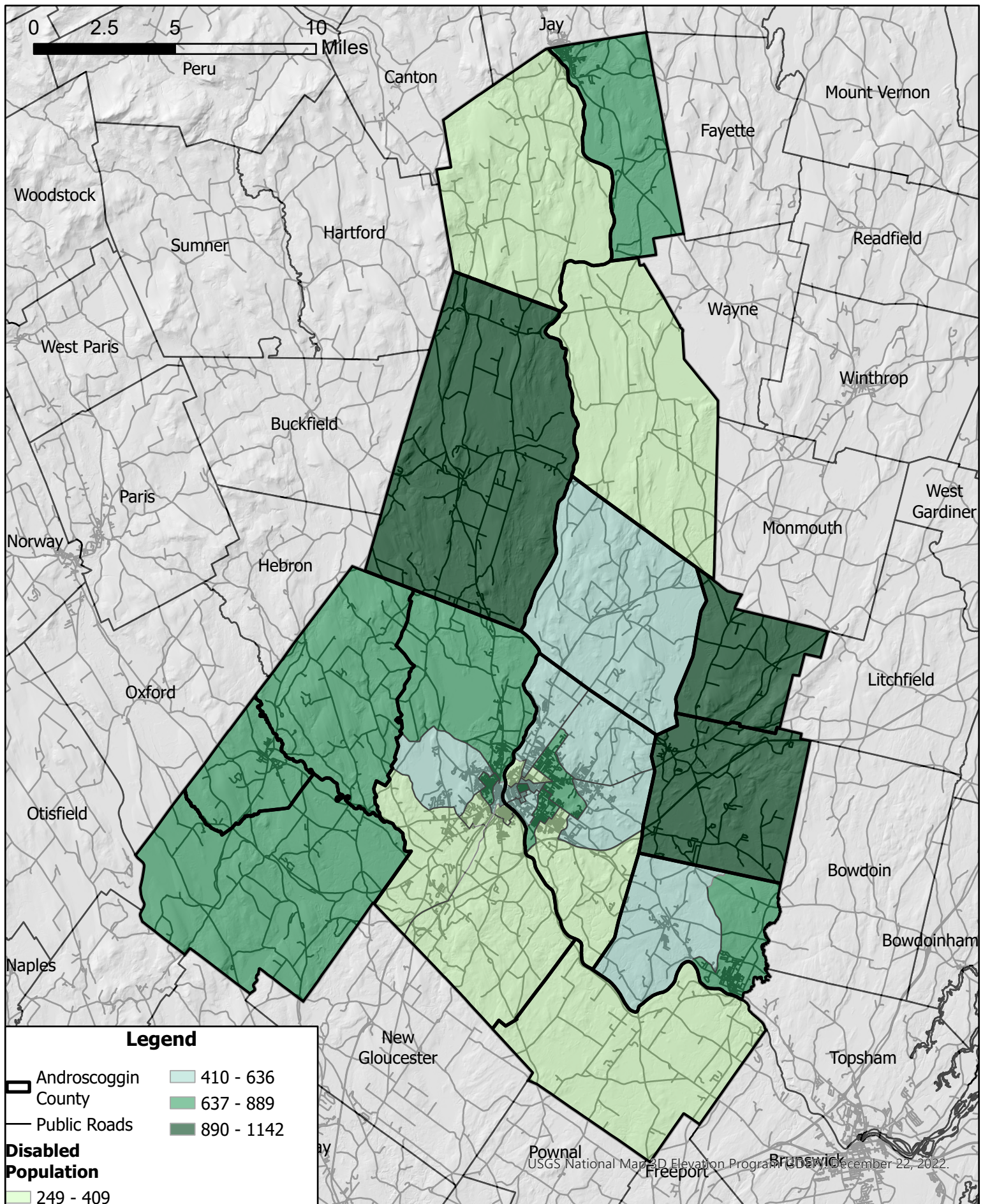
**Androscoggin County
Population Under 17 Years of Age
By Census Tract**

Data Sources: CDC/ATSDR Social Vulnerability Index, Maine Office of GIS



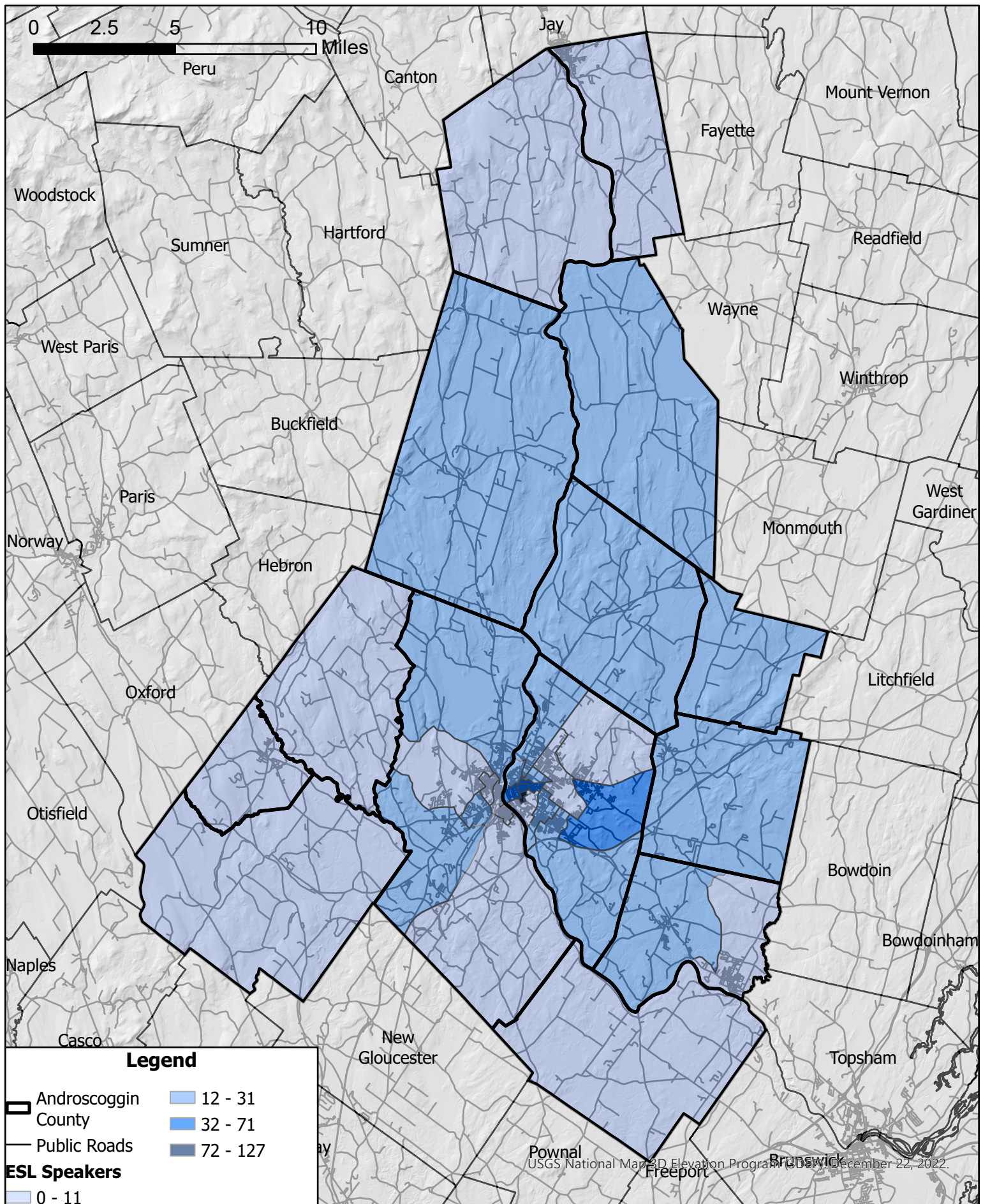
**Androscoggin County
Population Over 65 Years of Age
By Census Tract**

Data Sources: CDC/ATSDR Social Vulnerability Index, Maine Office of GIS



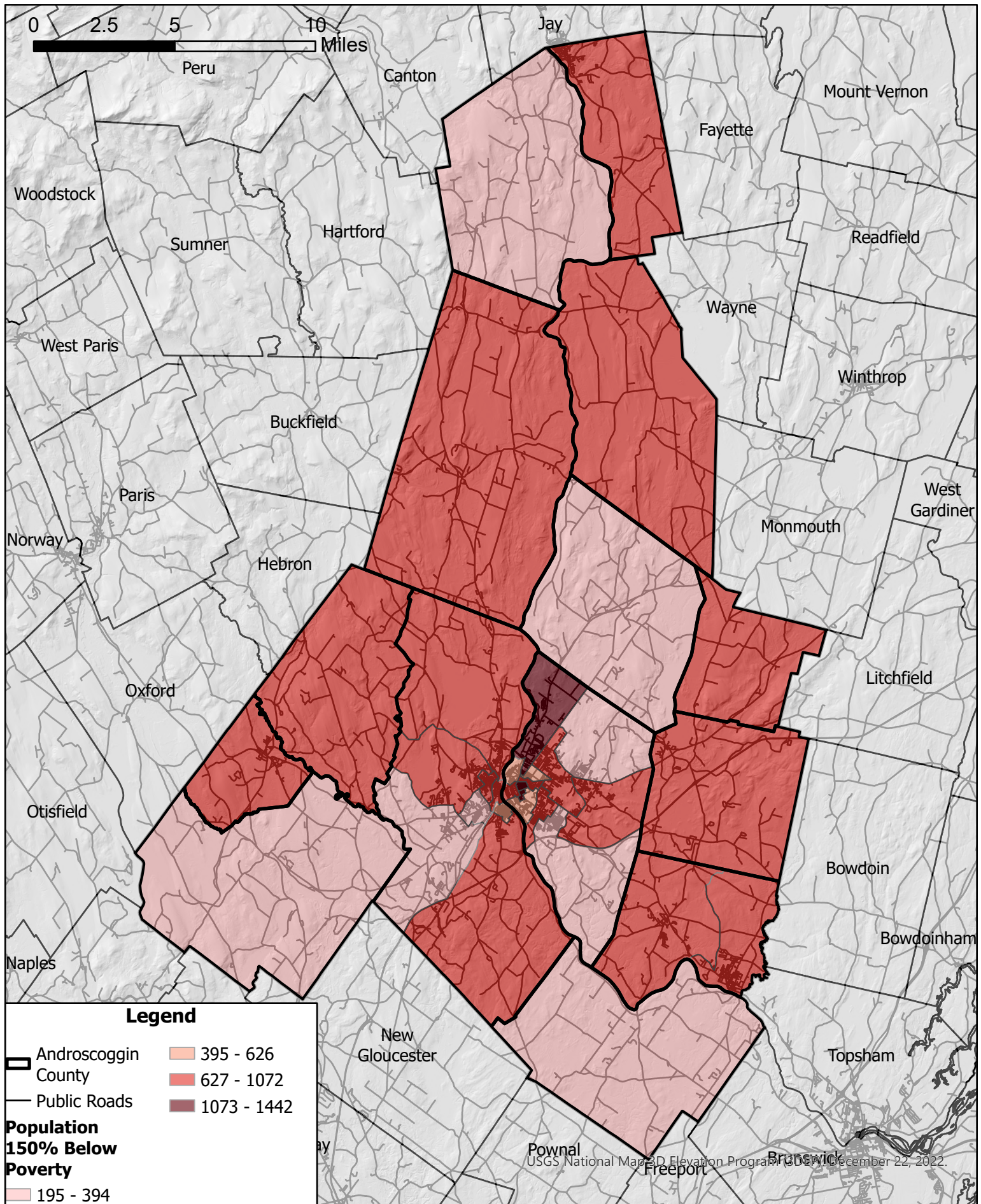
**Androscoggin County
Population with a Disability
By Census Tract**

Data Sources: CDC/ATSDR Social Vulnerability Index, Maine Office of GIS



**Androscoggin County
Population who speak English "less than well"
By Census Tract**

Data Sources: CDC/ATSDR Social Vulnerability Index, Maine Office of GIS



**Androscoggin County
Population Below 150% Poverty Threshold
By Census Tract**

Data Sources: CDC/ATSDR Social Vulnerability Index, Maine Office of GIS