



Scott Pezanowski, PhD

✉ scottpez@brightworldlabs.com

🏠 scottpez.tech

DATA UTILIZATION AUDIT

Uncover hidden opportunities in your data. Don't let valuable insights slip away!

2024

For :

c-suite executives, directors, planners, subject matter experts, analysts, managers

DATA UTILIZATION AUDIT

Unlock the potential of your data with advanced AI, analytics, and geospatial integration

Take the **Data Utilization Audit** to propel yourself or your organization forward with AI-driven insights. Whether you are a c-suite executive, director, manager, planner, subject matter expert, analyst, or professional.



RELEVANT DOMAINS

- public health
- logistics and supply chain
- agricultural technology
- telecommunications
- environmental and natural resources
- urban planning
- Earth observation

Reach out if yours is not listed to see what I can offer!

DESCRIPTION

In today's data-driven world, organizations have access to abundant geospatial data, offering immense opportunities to gain insights and drive strategic decisions. However, the true potential of this data lies in discovering innovative ways to utilize, analyze, and expand it for advanced applications.

My *Data Utilization Audit* service, backed by my 20+ years of R&D experience, is designed to help organizations unlock the full potential of their geospatial data assets. I focus on identifying new and different methods to leverage this data, enabling you to uncover hidden patterns, optimize operations, and drive innovation. Using my expertise, I assess how your organization collects, stores, and analyzes geospatial data and identify ways to enhance its value through advanced geospatial analysis and AI integration.

Are you exploring all the possibilities with your geospatial data? My service will help you identify opportunities to improve data utilization, adopt cutting-edge analytical techniques, and discover new data sources to support your business goals. Through my comprehensive audit, I provide actionable insights and recommendations tailored to your specific needs, empowering you to harness geospatial data and AI for transformative results.

EXPECTED OUTCOMES

1. Enhanced Data Utilization Strategies

Develop innovative methods to leverage geospatial data, uncover hidden patterns, and optimize business operations through advanced geospatial analysis and AI integration.

2. Identification of New Data Sources

Discover and incorporate new geospatial data sources to enrich your existing data sets, providing a more comprehensive foundation for analysis and decision-making.

3. Improved Analytical Techniques

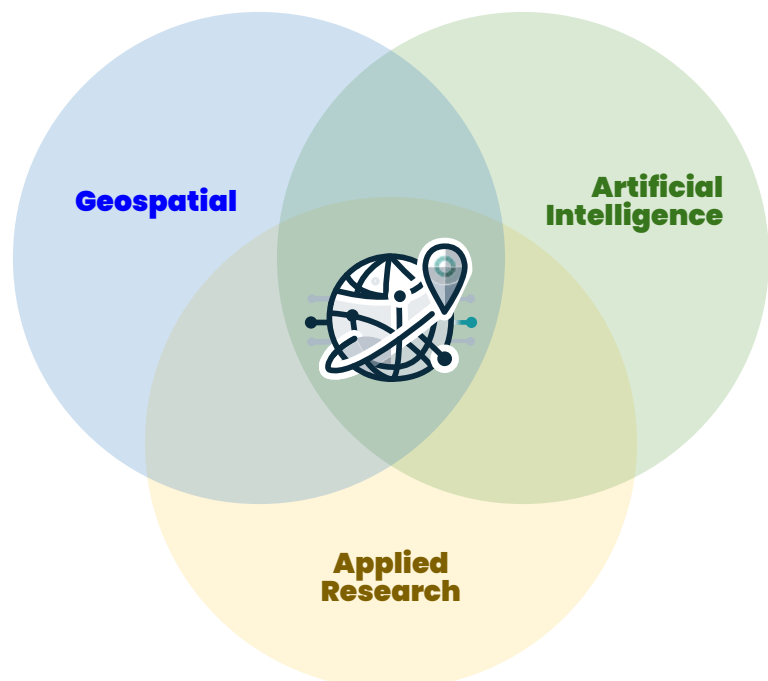
Gain insights into cutting-edge analytical techniques and tools, enabling your organization to perform more sophisticated geospatial analysis and derive actionable intelligence.

4. Actionable Recommendations and Roadmap

Receive tailored recommendations and a strategic roadmap designed to help your organization maximize the value of its geospatial data, driving innovation and achieving transformative business results.

WHY PARTNER WITH ME?

- Comprehensive Artificial Intelligence, Geospatial Technologies, and applied research experience.
- Comprehensive technical expertise in implementing solutions.
- Comprehensive understanding of both proprietary and open-source solutions.
- Not only consult and propose solutions but also provide all technical guidance and development to ensure the solution is completed.



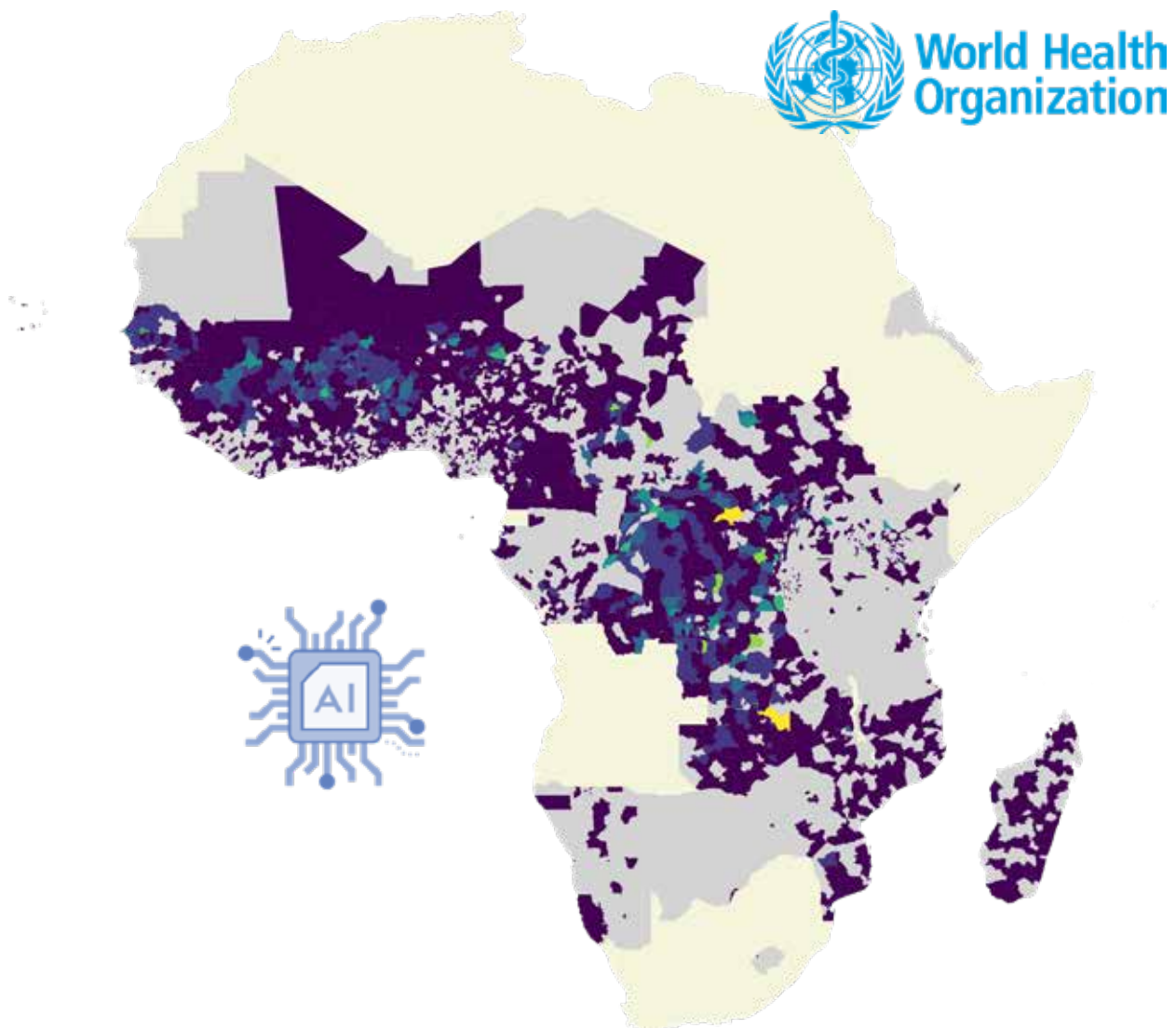
RELATED RECENT EXPERIENCE

Advanced Data Analytics and Machine Learning Consultant for the World Health Organization (WHO)

- Derive insights into disease epidemic data on a massive scale in Africa while maintaining local precision.
- Apply expert data science techniques to uncover patterns of disease-contributing factors and make future predictions.
- Implement ML text classification for disease news article detection and monitoring.

You can find more details in our recent academic journal article.

Pezanowski, S., Koua, E. L., Okeibunor, J. C., & Gueye, A. S. (2024). Predictors of disease outbreaks at continental-scale in the African region: Insights and predictions with geospatial artificial intelligence using earth observations and routine disease surveillance data. *DIGITAL HEALTH*, 10, 1–15. <https://doi.org/10.1177/20552076241278939>



Conducted a “Data Management for Business Intelligence” Workshop for The National Bank of Kuwait (NBK).



Conducted a “Data Analytics” Workshop for Borgan Bank of Kuwait.



ABOUT DR. SCOTT PEZANOWSKI

Dr. Scott Pezanowski is an artificial intelligence and machine learning expert with a **Ph.D. in Informatics** from **The Pennsylvania State University, USA**.

He has coordinated and implemented data analysis and visualization projects for funding agencies involved in health, security, national intelligence, and oil & gas, among others.

He consulted for the **World Health Organization** to analyze big data to predict disease spread on a massive continental scale. In addition, Dr. Pezanowski consults for **Abdullah Al Salem University** in Kuwait, helping to build its Data Science and AI Research Excellence Center, and acts as a Subject Matter Expert for the **Rochester Institute of Technology**.

He runs **BrightWorld Labs**, a high-tech computing consulting and training company. BrightWorld Labs solves complex problems through state-of-the-art AI and computing techniques.

In addition, he is a **Certified Professional in Talent Development (CPTD)** from the **Association for Talent Development (ATD)** with experience providing specialized training related to data analysis and management for business intelligence.

Dr. Pezanowski has advanced technical development experience, comprehensive AI, data science, and data management knowledge, and a robust general science background that allows him to partner with domain experts to develop modern techniques, plan the methodology, and implement technical solutions to solve complicated challenges.

He was recognized with prestigious awards from the **IEEE**, **NASA**, and **USGIF** for contributions to cutting-edge AI and geospatial intelligence solutions.

LET'S PARTNER!



"[Scott] is extremely patient, hardworking and possess the necessary skills to develop viable solutions using the latest technologies and methods available. He is able to assess end-user needs, translating them using the latest cutting-edge AI and Machine Learning methods and geospatial technologies. His technical skills are top."

- Professor Dr. Justine Blanford | University of Twente, The Netherlands

Uncover hidden opportunities in your data – Don't let valuable insights slip away!

Dr. Scott Pezanowski

A handwritten signature in black ink, reading "Scott Pezanowski".



AI and Geospatial Consultant | Researcher
scottpez@brightworldlabs.com



SCAN ME



THANK YOU!

For your time reading this proposal.