



**VOLTA LUX**  
RESIDENCES

# VOLTA LUX RESIDENCES

Kpando Torkor



**Kpando Torkor, Volta  
region,  
Ghana**

An architectural  
development that  
offers privacy,  
modernity and serenity.



# living Volta Lux

Quality housing in Volta is at an all time high with many homeowners and visitors looking for housing that represents their lifestyle.

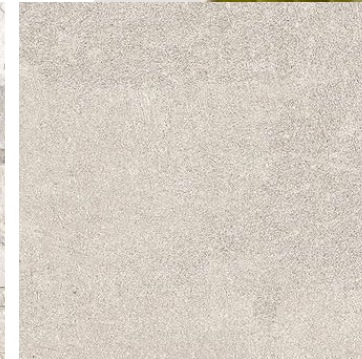
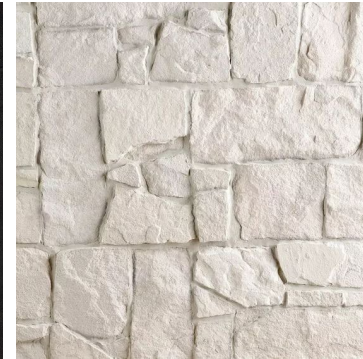
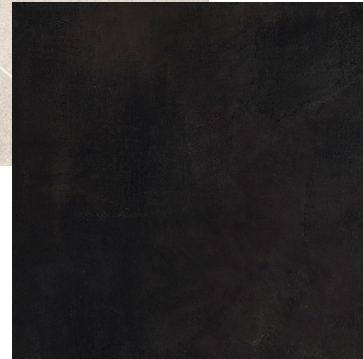
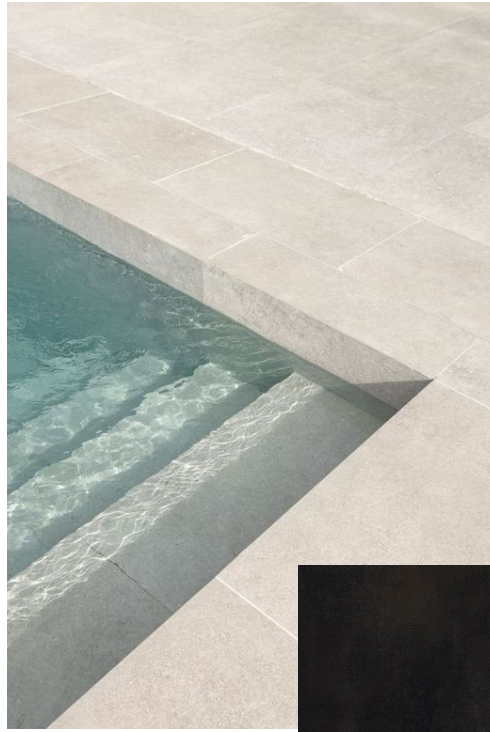
Driven to address this and work towards connecting owners to the best options with convenience and ease, Volta Lux believe in crafting tailored, efficient and innovative practical state-of-the-art homes.

With the minutiae of luxurious premium finishings and timeless home designs Volta Lux's construction approach follows the "Green" approach and takes pride in building homes that lasts a lifetime.

That is the Volta Lux Hallmark and promise.







## materials.

Fine finishings wood cubes, in contrast with the black metal details of the insole, gives the development an elegance simplicity.

Overlooking a green internal courtyard, each building is composed of three levels, and has a private swimming pool and garden. The **strategic** position of the development allows owners to easily **access** main city services without **compromising** the peace that characterizes the **neighborhood**. Large glazed loggias and **secured** terraces framed from the green they guarantee brightness and privacy.



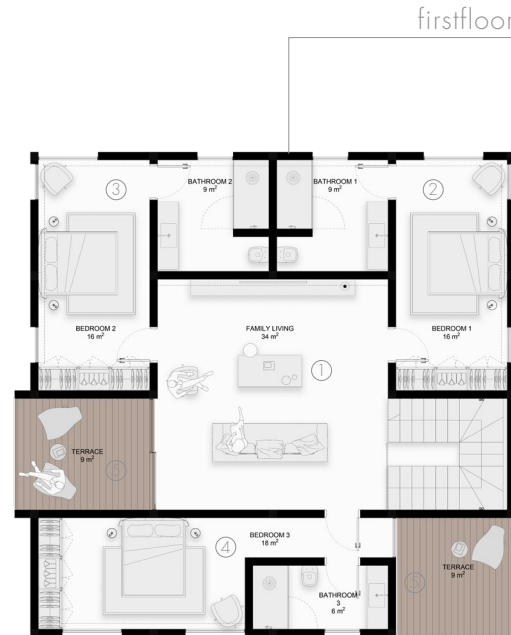
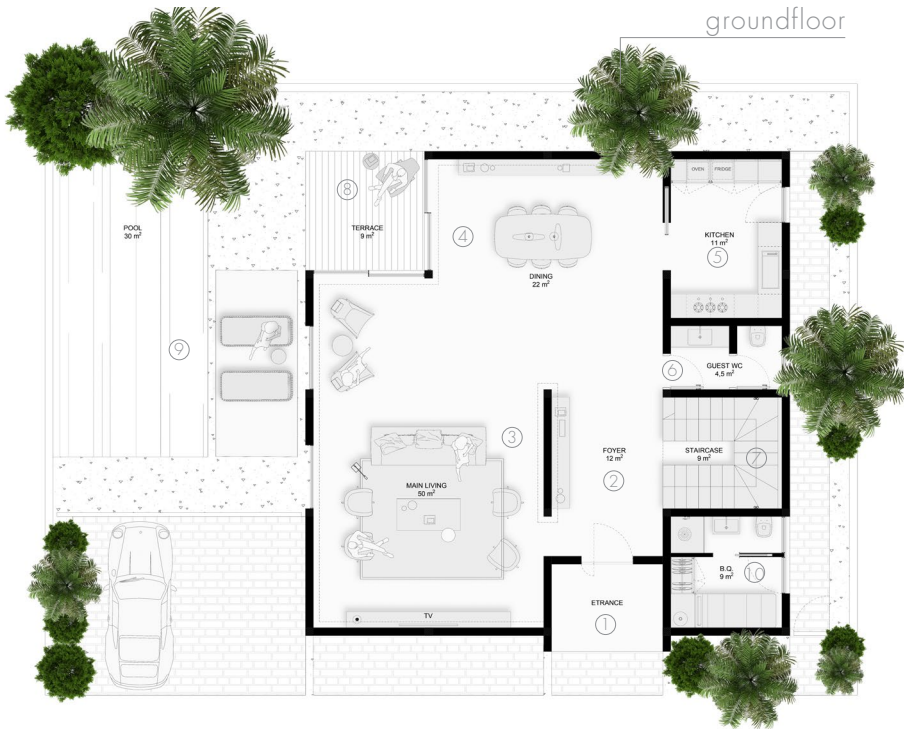
**the luxury of  
privacy.**

# THE THREE LEVELS

- ① entrance
- ② foyer
- ③ main living room
- ④ dining room
- ⑤ kitchen
- ⑥ guest wc
- ⑦ staircase
- ⑧ terrace
- ⑨ pool
- ⑩ b.q. area

- ① family living
- ② bedroom and bathroom 1
- ③ bedroom and bathroom 2
- ④ bedroom and bathroom 3
- ⑤ terrace

- ① master bedroom
- ② master walk-in closet
- ③ master bathroom
- ④ lounge
- ⑤ storage
- ⑥ bedroom and bathroom 4
- ⑦ terrace



interior view of  
the main entrance





*on this page*  
close-up of the central septum



## a bespoke home.

The foyer is characterized by a central septum, coated with an elegant and textured wallpaper, which highlights the entrance area as a focal point to welcoming guests. The foyer leads the guests to the main living room and the dining room.



The main living room **serves as**  
both  
a formal space for welcoming  
guests and a comfort area to  
**spend time with the family.**

THE MAIN LIVING

interior view of  
the main living room



interior view of  
the dining room

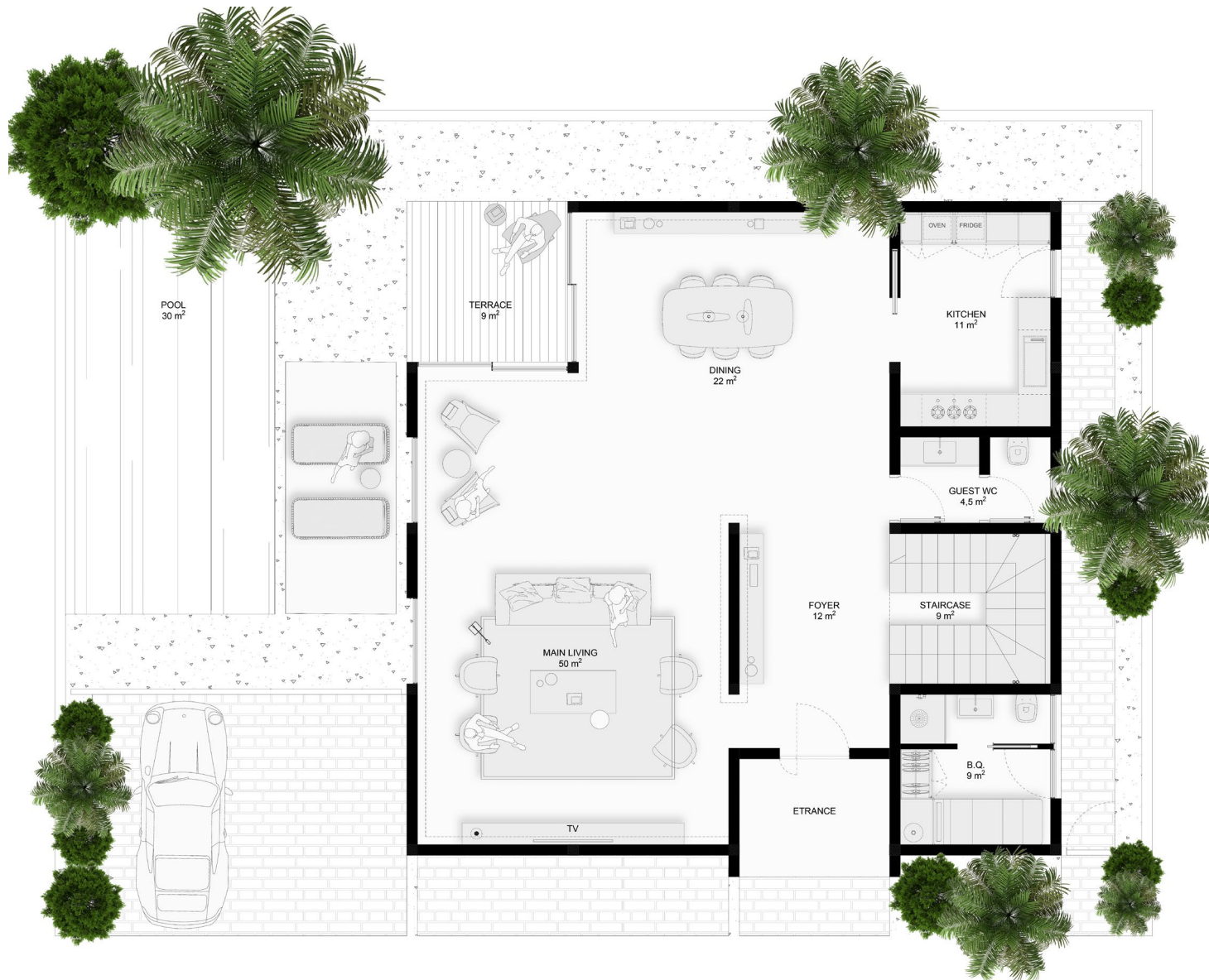


The dining room is an open space that directly speaks with the living area and the outdoor. The light that comes from the big windows creates a magical moment to share together.

It is connected with the kitchen through a glass door. The dark internal wood accents creates a beautiful contrast with the neutral color of the walls and the floor tiles.

**elegant  
convivium**





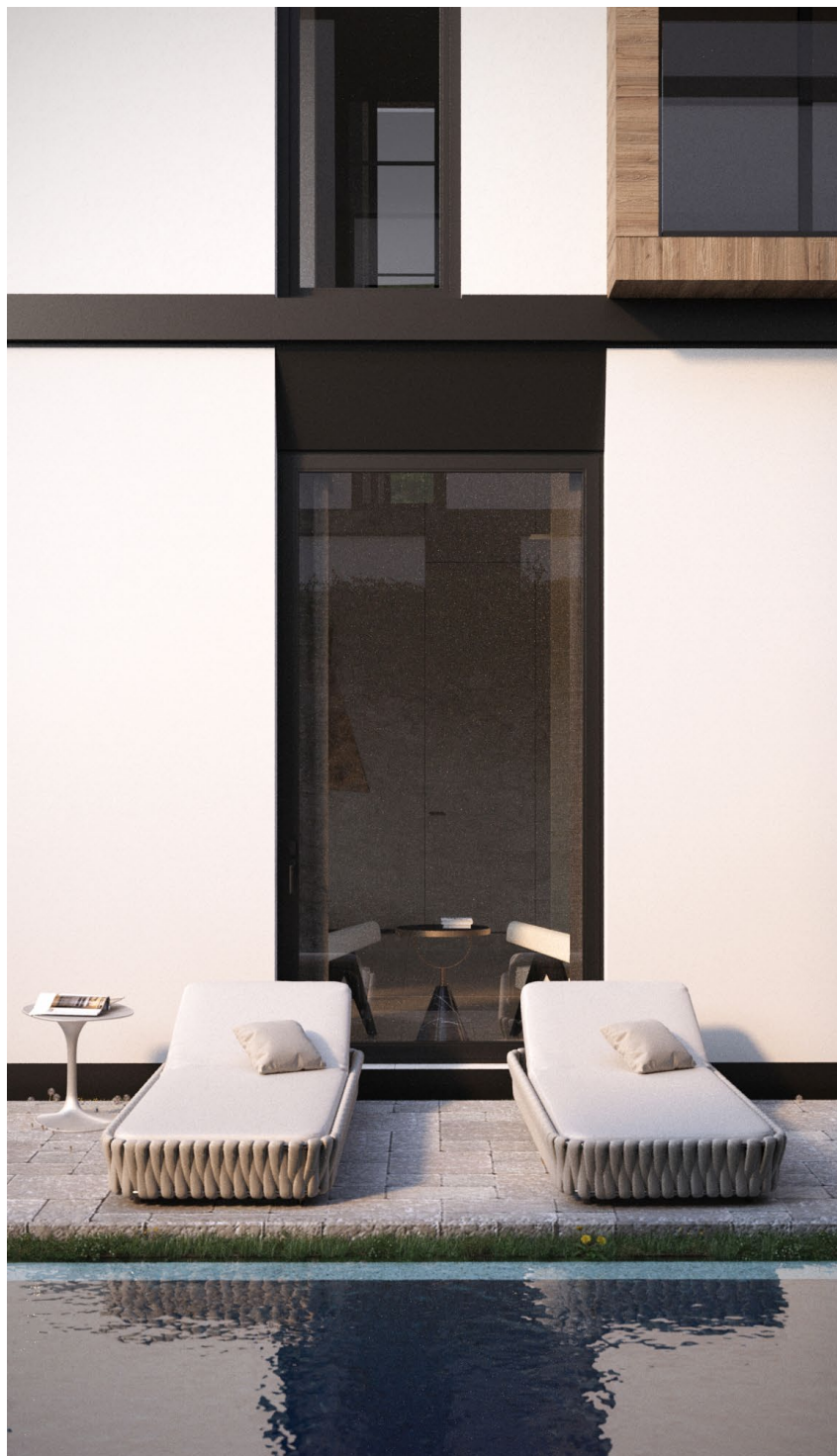
A cozy and comfortable environment, characterized by wood loggias and a huge terraces overlooking the private swimming pool.

The whole house is surrounded by greenery adding softness to the landscape

**an immersive green.**

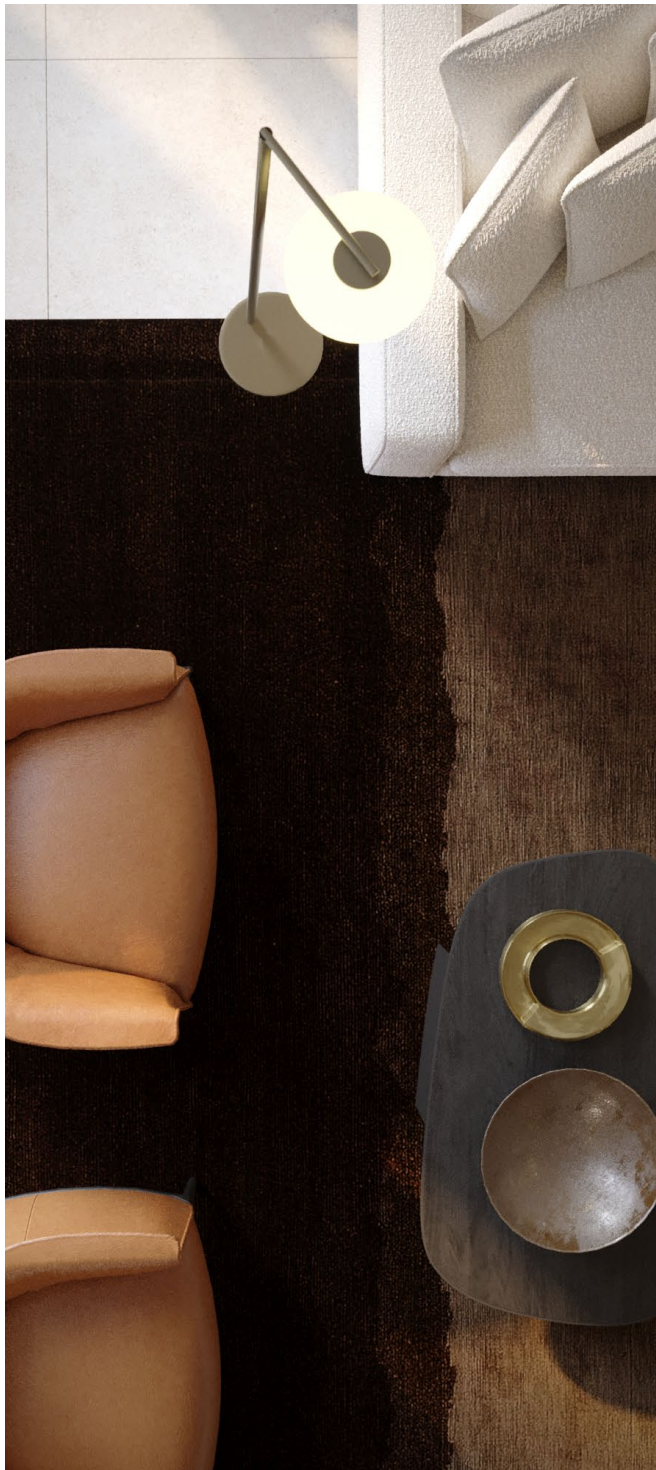


*on this page*  
close-up of the pool



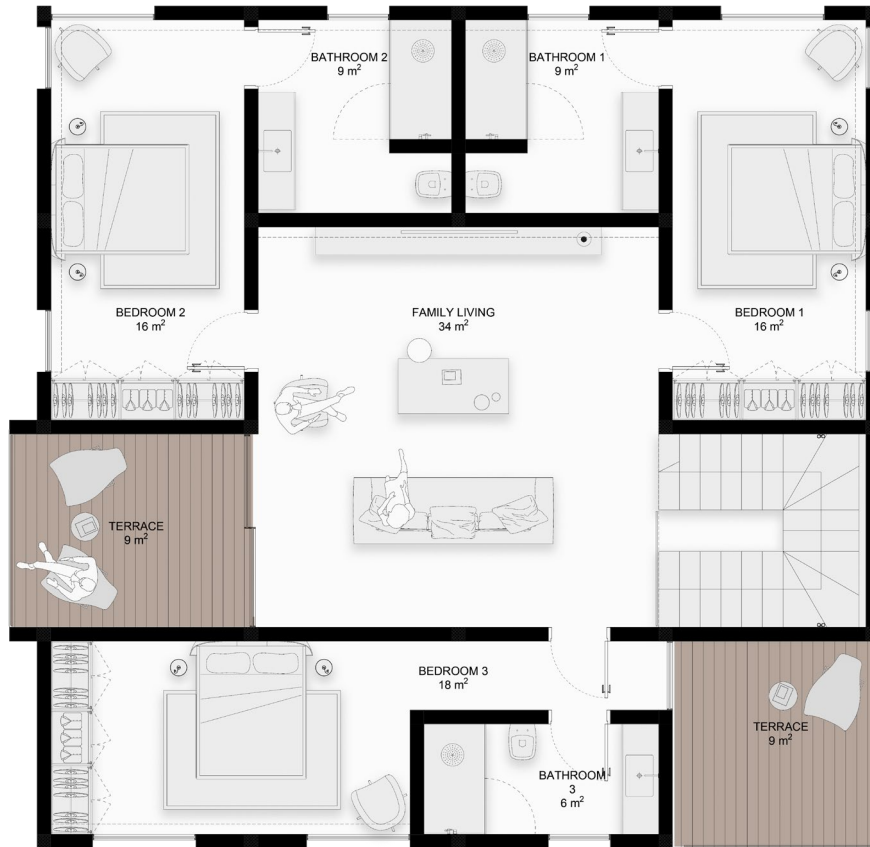
Living Volta Lux means immersing yourself in a place of comfort and quality: luxury amenities, selection of materials of quality, supplies of the main Italian brands, and a marked attention to the environment. The facade is minimal but full of details, like the black metals frames and the wood loggias.





interior view of  
the master bedroom





## THE PRIVACY LEVELS

The first and second floors offer privacy, both for family and guest.

The first floor has three ensuite bedrooms all connected to the family living room

The second floor houses mainly the master bedroom with an ensuite bathroom and walk in closet. Both floors are characterized with wide and private loggias.



*on this page  
close-up of the  
master bedroom*

The textured wall behind the master bed is embellished with brass metal vertical details that warms the entire space with an elegant touch.





The walk-in closet is a transit space, which connects the bedroom to the bathroom, a continuous space.

Characterized by a contrast between the light wood and the metal frames of the glass doors, the master cabin fits perfectly with the design of the whole house.

interior view of  
the master bedroom



a continuous space.



interior view of  
the master bathroom and closet





## THE BATHROOM

The walk-in closet directly leads you to the master bathroom, entirely coated with white sand coloured tiles that creates a perfect contrast with the black wood sink furniture. Softer shapes, such as round sconces and biscuit-shaped mirrors, accompany the rigid architecture of the rest of the space.



interior view of  
the master bathroom and closet

*on this page*  
close-up of the  
master bathroom's bath-tub



The bathtub  
overlooking  
the private  
loggia creates a  
magical moment  
of peace and  
relax.



*on this page  
drone view of the compound.*

