



Hexbuild Spaces - The One- Stop Solution!

INTRODUCTION

HEXBUILD IS THE LEADER OF CHINA'S LIGHT STEEL BUILDING INDUSTRY, MANUFACTURING ENERGY- SAVING STEEL STRUCTURE BUILDINGS, WE ARE DEVOTED TO RESEARCH AND DEVELOPMENT, APPLICATION AND POPULARISATION OF SUCH STRUCTURES ON A GLOBAL SCALE.

WITH A HARD-WORKING TEAM & STATE OF THE ART WORKING ENVIRONMENT. OUR STRUCTURES ARE VERY DIVERSIFIED, OFFERING TURNKEY SOLUTIONS, WITH ATTRACTIVE EXTERIOR DESIGNS AND FINISHES COMPLEMENTED BY PRACTICAL INTERIORS. A ONE-STOP SOLUTION FROM DESIGN TO SUPPLY.

HEXBUILD SUPPLY MANY PRACTICAL SOLUTIONS ACROSS PREFABRICATED HOUSES, LIGHT STEEL VILLAS, *CONTAINER HOUSES*, PORTABLE TOILETS & SECURITY STAFF BOXES, OFFICE BLOCKS, SCHOOLS, HOSPITALS, SPORTS HALLS AND WAREHOUSES.

OUR COMPANY IS COMMITTED TO PROVIDING HIGH- CLASS QUALITY & EFFICIENT PRE & AFTER SALES SERVICE, WHICH HAS ENHANCED OUR REPUTATION WITH OUR MANY CUSTOMERS AROUND THE WORLD, INCLUDING TERRITORIES SUCH AS ANGOLA, ETHIOPIA, NIGERIA, SOUTH AFRICA, SOMALIA, MOROCCO, RUSSIA, KYRGYZSTAN, UNITED ARAB EMIRATES, SAUDI ARABIA, IRAN, IRAQ, MALDIVES, VIETNAM, UNITED STATES OF AMERICA, MALAYSIA, PERU ETC...

WE HAVE ASSEMBLED A TEAM OF HIGHLY TRAINED TECHNICIANS THAT WORK WITH OUR ON-SITE INSTALLATION TEAM, PROVIDING CUSTOMERS WITH A FULL AND COMPLETE SERVICE FROM PROJECT CONCEPTION, DESIGN, MANUFACTURE, CONSTRUCTION TO INSTALLATION. WE ENSURE THROUGH OUR 25 YEARS OF EXPERIENCE BUILDING THESE STRUCTURES, TO OFFER OUR CLIENTS THE MOST SCIENTIFIC & EFFECTIVE SOLUTION TO THEIR REQUIREMENTS.

HEXBUILD SPACES - THE ONE- STOP SOLUTION!

DOUBLE CONTAINER LODGE: KOH SAMUI, THAILAND.

THIS TWO CONTAINER, 30M2 BEACHSIDE LODGE IS SEPARATED INTO TWO LIVING SPACES, EITHER SIDE OF A STUNNING WOODEN VERANDA. CONSTRUCTED USING MATT BLACK FRAMING, AND RAISED STEEL FOUNDATIONS, WOODEN EFFECT CLADDING, WHITE ROOFING & MATT BLACK LOUVERED PANELS. ONE 15M2 UNIT INCLUDES A KITCHENETTE, DINING AND SEATING AREA, AND ACROSS THE SPACIOUS VERANDA THE SECOND 15M2 UNIT INCLUDES A DOUBLE BEDROOM AND BATHROOM. THE ADDITION OF A FRONT VERANDA ALLOWS A WONDERFUL SPACE TO ENJOY LAZY AFTERNOONS AND AL-FRESCO DINING & RELAXING EVENINGS.



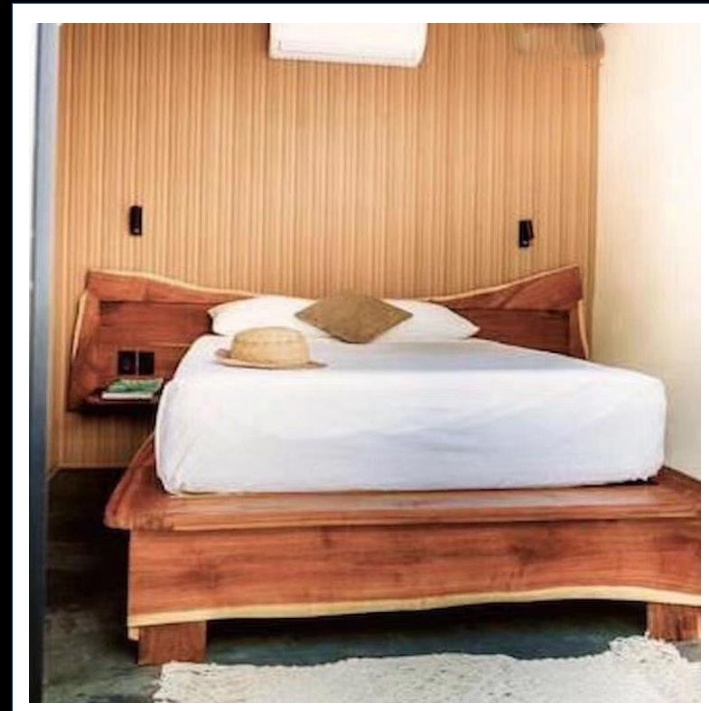
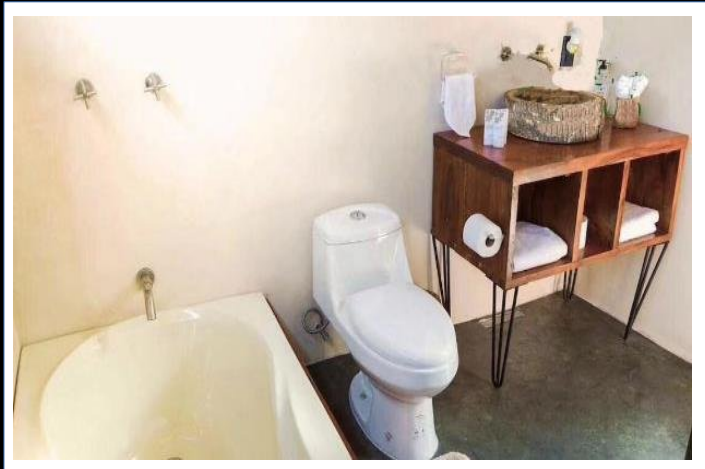




CONTAINER HOTEL: NORTH AMERICA

FINISHED IN SPRAYED BLACK GLOSS FRAMES WITH DOUBLE GLAZED WINDOWS AND DOORS AND DECORATED TO A HIGH STANDARD. CONSTRUCTED OVER 2-LEVELS AND USING WOODEN STAIRCASES AND DECKING TO BRING A MODERN HOTEL, FITTING SEAMLESSLY INTO THE FOREST SURROUNDINGS. THIS 20 - BEDROOM HOTEL, COMPRISES OF 4 SINGLE ROOMS WITH INTEGRAL BATH/ TOILET, 14 DOUBLE ROOMS WITH EN- SUITE BATH/ SHOWER ROOM & 2, TWO-BEDROOM SUITES WITH EN- SUITE BATHROOMS AND SITTING AREA. OUTSIDE SEATING AREAS, RECEPTION, DINING ROOM AND WASH ROOMS, COMPLETE THE HOTEL.





CONTAINER MOTEL: CANADA.

SPRAYED BLACK MATT FRAMES, HONEY MAPLE WOODEN VERTICAL BEAMS AND HORIZONTAL LOUVRE DECORATION, DOUBLE GLAZED WINDOWS AND DOORS, BRINGING A STYLISH AND CONTEMPORARY EXTERIOR LOOK AND A DECORATED INTERIOR, FITTING SEAMLESSLY INTO THE FOREST SURROUNDINGS. THIS 20 - BEDROOM HOTEL, COMPRISES OF 4 SINGLE ROOMS WITH INTEGRAL BATH/ TOILET, 14 DOUBLE ROOMS WITH EN- SUITE BATH/SHOWER ROOM AND 2, TWO - BEDROOM SUITES WITH EN-SUITE BATHROOMS AND SITTING AREA. OUTSIDE SEATING AREAS, RECEPTION, DINING ROOM AND WASH ROOMS, COMPLETE THE HOTEL.





CONTAINER MOTEL: THAILAND.

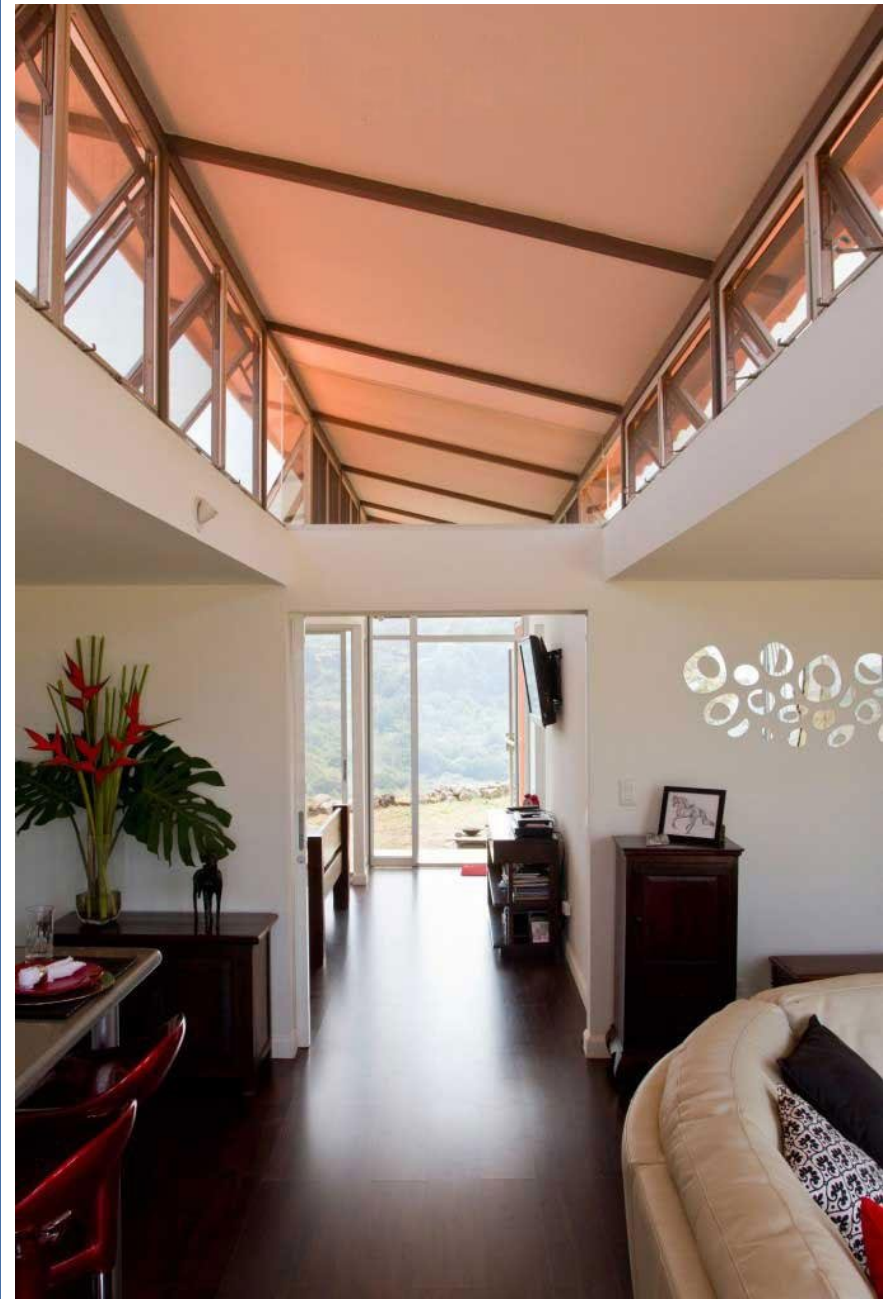
THESE CONTAINER STUDIOS UTILIZE, TO DOUBLE THE USABLE AREA, THE CONTAINER USED FOR SHIPPING THE UNIT. BY REMOVING ONE OF THE LENGTH - WISE WALLS AND ATTACHING THE INTERNALLY SHIPPED UNIT. THIS CREATES A VERY IMPRESSIVE SPACE AND LOW CARBON FOOTPRINT. CONSTRUCTED USING SPRAYED BLACK MATT FRAMES AND DOUBLE-GLAZED WINDOWS AND DOORS, BRINGING A STYLISH & MODERN EXTERIOR LOOK AND AN INTERIOR DECORATED TO A HIGH STANDARD USING ASH WOODEN PANELLING. CONSTRUCTED ON A SINGLE LEVEL, THIS 25-BEDROOM MOTEL, BRINGS STYLISH ACCOMMODATION, EACH 30M2 ROOM WITH DOUBLE BED, SHOWER/ TOILET, INTERNAL SITTING AREA & 2-SEATER TABLE, HEATER & AIR- CONDITIONING. A RECEPTION, DINING ROOM, BAR & WASH ROOMS, COMPLETE THE MOTEL.



CONTAINER LODGE: CANADA.

WITH SLATE GREY FRAMES AND DOUBLE - GLAZED WINDOWS AND DOORS AND ORANGE COATED STEEL WALL PANELS, THIS LEADS TO A SLEEK, MODERN EXTERIOR LOOK AND AN INTERIOR DECORATED TO A HIGH STANDARD USING WHITE PAINTED WALL PANELLING AND WHITE ASH LAMINATE FLOORING. CONSTRUCTED ON A SINGLE LEVEL, THIS 3-BEDROOM LODGE, BRINGS CONTEMPORARY ACCOMMODATION. THIS 110M2 HOME CONSISTS OF 1 MASTER BEDROOM WITH ENSUITE, 2 FURTHER DOUBLE - BEDROOMS, MAIN BATHROOM, LOUNGE, KITCHEN/ DINER, WITH HEATING AND AIR - CONDITIONING WITH RAISED SKILLION ROOF FITTED WITH SOLAR PANELS, CONSTRUCTED AND RAISED ON CONCRETE AND STEEL PILLAR FOUNDATIONS AS A PREVENTION MEASURE IN AN AREA LIABLE TO FLOODING.





CONTAINER LODGE: INDONESIA.

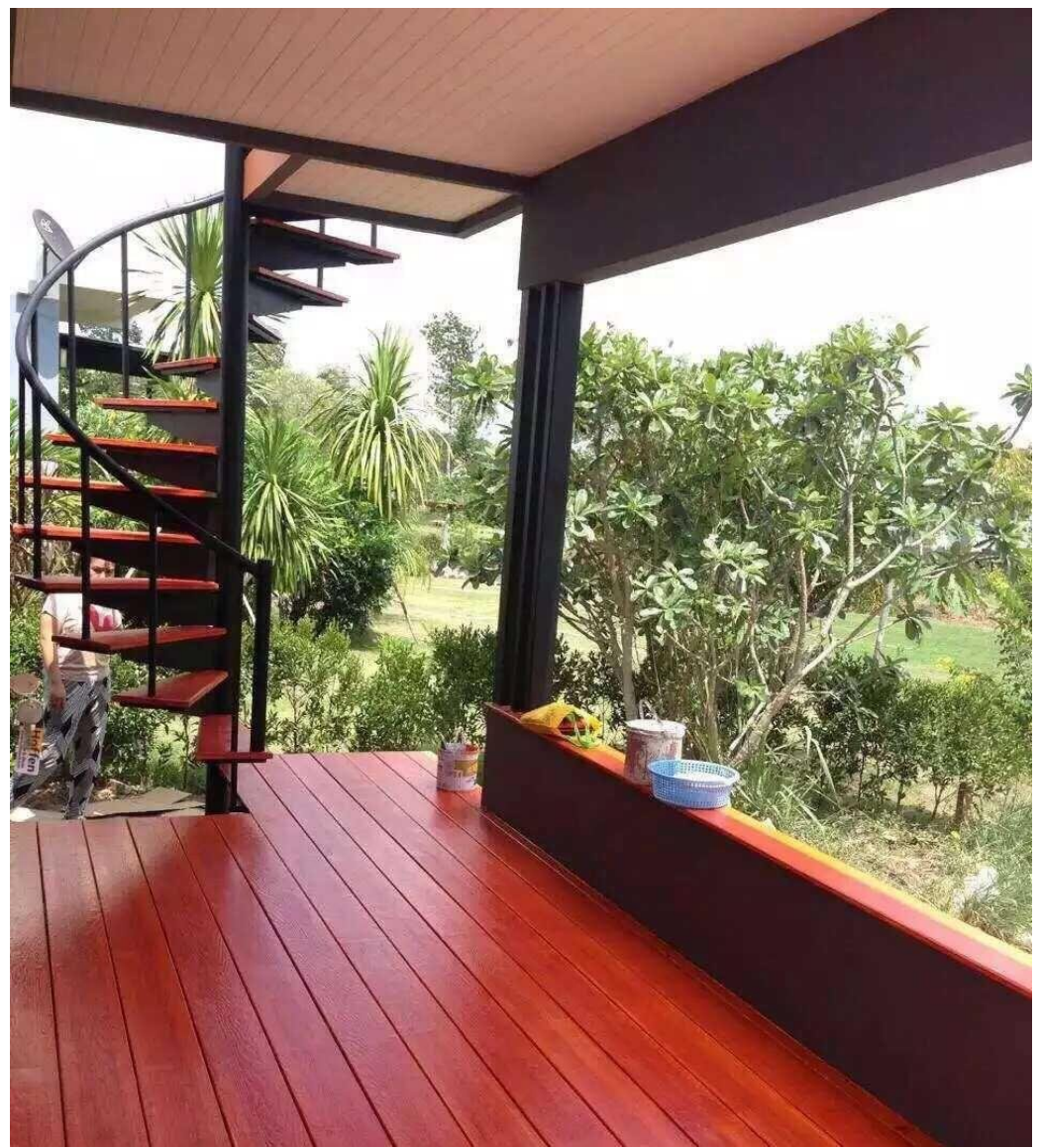
SPRAYED SLATE GREY MATT FRAMES AND DOUBLE – GLAZED WINDOWS AND DOORS AND APPLE GREEN COATED STEEL WALL PANELS. CREATING A MODERN EXTERIOR LOOK AND AN INTERIOR DECORATED TO A HIGH STANDARD USING WHITE PAINTED WALL PANELLING AND WHITE TILED FLOORING. CONSTRUCTED OVER 2 LEVELS, THIS 3 - BEDROOM LODGE, BRINGS STYLISH AND CONTEMPORARY ACCOMMODATION. THIS 85M2 HOME CONSISTS OF 1 MASTER BEDROOM WITH EN-SUITE ON THE UPPER FLOOR AND CANTILEVERED TERRACE TO THE FRONT AND ROOF TERRACES ON EITHER SIDE WITH SPRAYED BALUSTRADES. ON THE GROUND FLOOR THERE ARE 2 FURTHER BEDROOMS, MAIN BATHROOM, OPEN PLAN LOUNGE, WHITE METAL KITCHEN / DINER, HEATING AND AIR – CONDITIONING. COVERED OUTSIDE TERRACES TO THE FRONT AND REAR OF OF THE LODGE, TO ENJOY RELAXING DAYS & WARM EVENINGS PERFECT FOR ALFRESCO DINING.



CONTAINER LODGE: VIETNAM.

ULTRA MODERN STYLING AND USE OF COLOURS SETS THIS LODGE APART FROM MORE TRADITIONALLY DESIGNED VIETNAMESE DWELLINGS. SPRAYED BLACK FRAMES, SLATE GREY MATT WALLS WITH WHITE AND ORANGE HIGHLIGHTS AND DOUBLE - GLAZED WINDOWS AND DOORS. CREATING A MODERN EXTERIOR LOOK AND AN OPEN PLAN INTERIOR, DOUBLE- GLAZED WINDOWS AND DOORS. CREATING A MODERN EXTERIOR LOOK AND AN OPEN PLAN INTERIOR SPACE, DECORATED TO A HIGH STANDARD USING WHITE PAINTED WALL PANELLING AND BLACK TILED FLOORING. THIS 15M2 HOME CONSISTS OF OPEN PLAN LIVING/DINING/BEDROOM, SHOWER/ TOILET AND KITCHENETTE. WITH OPEN FRONT AND SIDE VERANDAS AND ROOF TOP TERRACE, ALLOWING AN ADDITIONAL 20M2 OF USABLE SPACE TO ENJOY RELAXING DAYS AND WARM EVENINGS, PERFECT FOR ALFRESCO DINING AND STUNNING VIEWS OVER THE COUNTRYSIDE, THIS LODGE BRINGS A PERFECT WEEKEND GETAWAY SOLUTION.





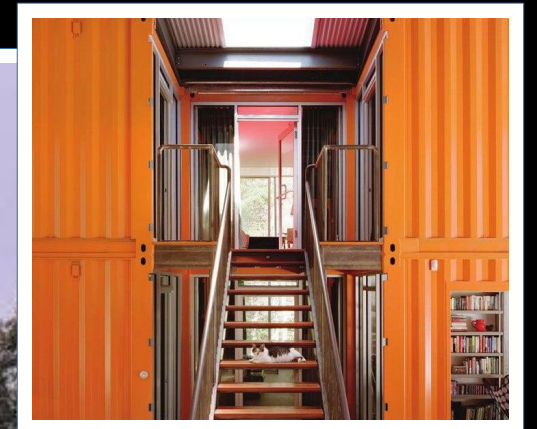
2 STOREY CONTAINER LODGE: PHILIPPINES.

WITH AN EXTERIOR FINISH OF BEECH WOOD, WHITE FRAMED WINDOWS & DOORS & LIGHT GREY HIGHLIGHTS, THIS LODGE BLENDS PERFECTLY INTO ITS OCEAN FRONT POSITION. CREATING A SOPHISTICATED EXTERIOR LOOK AND AN INTERIOR INTERIOR SPACE, DECORATED TO A HIGH STANDARD, USING WHITE PAINTED WALL PANELLING AND TILED FLOORING. THIS 75M2 HOME CONSISTS OF OPEN PLAN LIVING/ DINING AND KITCHEN, SECOND BEDROOM AND SHOWER ROOM/ TOILET, WHILST ON THE UPPER LEVEL THE MAIN BEDROOM, WITH ITS FLOOR TO CEILING WINDOWS, AFFORDS BREATHTAKING VIEWS OVER THE BEACH AND OCEAN. THE 20M2 ROOFTOP TERRACE IS PERFECT FOR ALFRESCO DINING AND STUNNING VIEWS OVER THE PANORAMIC VISTA. THIS LODGE BRINGS A PERFECT SEASIDE RETREAT.



2 STOREY CONTAINER VILLA: NEW ZEALAND.

THIS STRUCTURE BLENDS THE ULTRA MODERN AND INDUSTRIAL CONTAINER LOOK, TO CREATE A STUNNING 4- BEDROOM HOME. WHITE FRAMING AND WHITE ROOF FAÇADE, WITH THE INTERIOR SPACE DECORATED TO A HIGH STANDARD, USING WHITE PAINTED WALLS AND ORANGE STEEL PANELLING AND TILED FLOORING. THIS 130M2 HOME CONSISTS OF AN OPEN PLAN LIVING/ DINING AND KITCHEN, STUDY AND SHOWER ROOM / TOILET AND TWO OPEN STAIRCASES, LEADING TO THE UPPER LEVEL ACCOMMODATION COMPRISING OF MASTER EN-SUITE BEDROOM, 3 FURTHER BEDROOMS AND FAMILY BATHROOM. WITH ITS FLOOR TO CEILING WINDOWS, THIS HOUSE ALLOWS STUNNING VIEWS OVER THE NEW ZEALAND COUNTRYSIDE.



GARDEN LODGES.

THESE GARDEN LODGES, WHILST ON THESE 3 EXAMPLES BELOW , RETAIN THE INDUSTRIAL 'CONTAINER' LOOK, CREATE WONDERFUL RELAXING GARDEN SPACES WHICH CAN BE USED FOR A VARIETY OF PURPOSES. WHITE FRAMING, GREY STEEL PANNELLING, ENHANCED BY THE INTRODUCTION OF WOOD DECKING AND IN SOME CASES CANTILEVERED ROOFING OVER TERRACES. THESE UNITS OFFER AN INTERIOR SPACE OF 15M



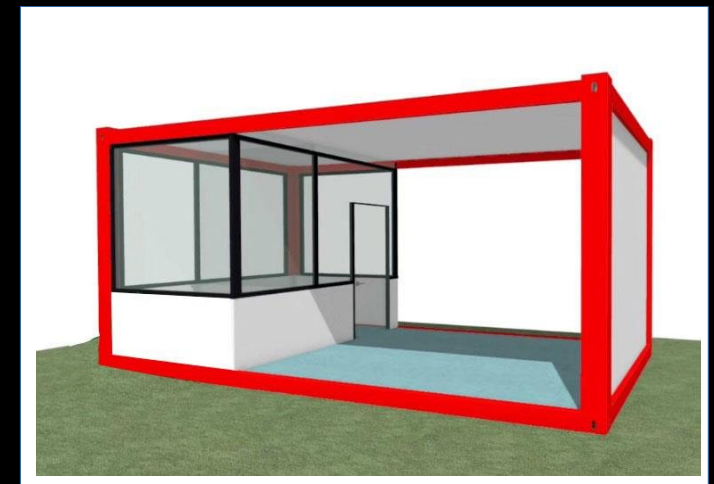
GARDEN OFFICE.

THIS GARDEN OFFICE CREATES A WONDERFUL WORKSPACE. MATT BROWN SPRAYED FRAMING AND FLOOR TO CEILING DOUBLE- GLAZED WINDOWS AND DOORS, ENHANCED BY THE LARGE AREA OF WOODEN DECKING. THESE UNITS OFFER AN INTERIOR SPACE OF 30M2 AND ARE DECORATED TO A HIGH STANDARD. SUPPLIED WITH WASH ROOM, TOILET AND SMALL KITCHENETTE. A GREAT SOLUTION TO THE UPTURN IN WORKING FROM HOME NEEDS



POP- UP KIOSKS:

THESE UNITS OFFER AN INTERIOR SPACE OF 15M2 AND CAN BE PURCHASED FOR MANY USES SUCH AS RETAIL SPACES, COFFEE SHOPS, NEWSAGENTS, TICKET OFFICES ETC.



COFFEE SHOP KIOSK: CAPE TOWN.

THESE UNITS OFFER AN INTERIOR SPACE OF 15M2 AND CAN BE PURCHASED FOR MANY USES. THE UNIT SHOWN BELOW, A COFFEE SHOP KIOSK, PRE-FITTED AT THE FACTORY AND SHIPPED TO SITE, IMMEDIATELY READY FOR USE AFTER BEING DELIVERED BY HIAB, THUS REQUIRING ONLY THE EXTERIOR LIGHTING, SIGNAGE AND TABLES TO BE FITTED ON SITE IN SA.



WORKERS OFFICE & 2 STOREY ACCOMMODATION UNITS:

THESE UNITS EACH OFFER AN INTERIOR SPACE OF 15M² AND WERE CONSTRUCTED ON SITE TO BE PURPOSED FOR THE MANAGEMENT OFFICE AND EMPLOYEES TEMPORARY ACCOMMODATION. TOTAL AREA 105M² AND CONSTRUCTED IN LESS THAN TWO DAYS. WITH COMMUNAL WASH ROOM, TOILET AND SHOWER ROOM UNIT.

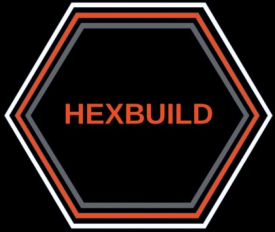


2- STOREY ACCOMMODATION UNITS:

CONSTRUCTED OVER 2- STORIES, THIS 10 CONTAINER, WORKERS ACCOMMODATION UNIT WAS CONSTRUCTED IN 72 HOURS, EACH UNIT WITH ITS OWN SHOWER / TOILET, PROVIDING COMFORTABLE LIVING FOR WORKERS WHILST ON SITE. COVERED WALKWAYS AND VERANDAS ALLOW FOR THAT AREA OF RELAXATION AFTER A HARD DAY'S WORK! ONCE THE PROJECT IS COMPLETED THE UNITS ARE DISASSEMBLED AND MOVED TO THE NEXT REQUIRED SITE.



FLAT PACK CONTAINER STRUCTURE LOADING METHOD:



CONTACT US

Hong Kong & United Kingdom:

Peter Hurst

TEL: +852 93073664 (Hong Kong)

TEL: +44 (0) 77439 48674 (UK)

Email: peterhurst@hexbuild.com

United Kingdom & Global:

Frank Daly

TEL: +44 (0) 7775 694157

Email: frank@hexbuild.com
orderlineglobal@gmail.com

PDQ HK Limited.
Units 2804-07, 28th Floor,
Man Yee Building,
68, Des Voeux Road Central,
Hong Kong.

COMPANY NUMBER 1595036.

www.hexbuild.com

