



Hexbuild Hospitals & Clinics - Built with Care in Mind.

INTRODUCTION



In 2019 Hexbuild, created Hexpress Hospitals designed as a fast, affordable system of supplying extra facilities for the caring and nursing of patients. These units are constructed and supplied using our modular "Pop-Up" and "Expandable" systems and create total building spaces as specified by the customer, with fast erection solutions, ready for use soon after delivery to site.

To illustrate the speed of reaction to situations, alongside our China manufacturing partners, Hexbuild were the suppliers of two container system hospitals, the first in Wuhan, a 1,000 bed facility completed in 10 days and the second in Shenzhen, a 1,500 bed facility and ready for patient admissions in 20 days. Images of the Wuhan facility follow below.

Hexbuild manufacture and deliver hospital solutions all over the World. Recently we have completed and shipped a 100 bed facility to central Africa and are about to supply 80 x 50 bed facilities as local treatment centres into a neighbouring country. With expertise of over 20 years in manufacturing modular container structures, we are extremely confident we can deliver a product to immediately assist any requirement for extra medical units required. We create additional hospital facilities, to include bedrooms, en-suite showers and toilets, operating theatre, morgue, staff changing areas, visitor waiting room, cafe, restaurant area and public wash rooms etc.

To complete the offering, Hexpress Hospitals can supply, hospital beds, screens, adjustable bed tables, bedside cabinets, secure medical storage cabinets and cupboards and all furniture required for staff areas. We can also supply a full range of PPE as an approved supplier to the National Health Service (NHS) in the United Kingdom during the Covid-19 pandemic.

Hexpress Hospital - Completed Wuhan 1000 Bed Hospital.



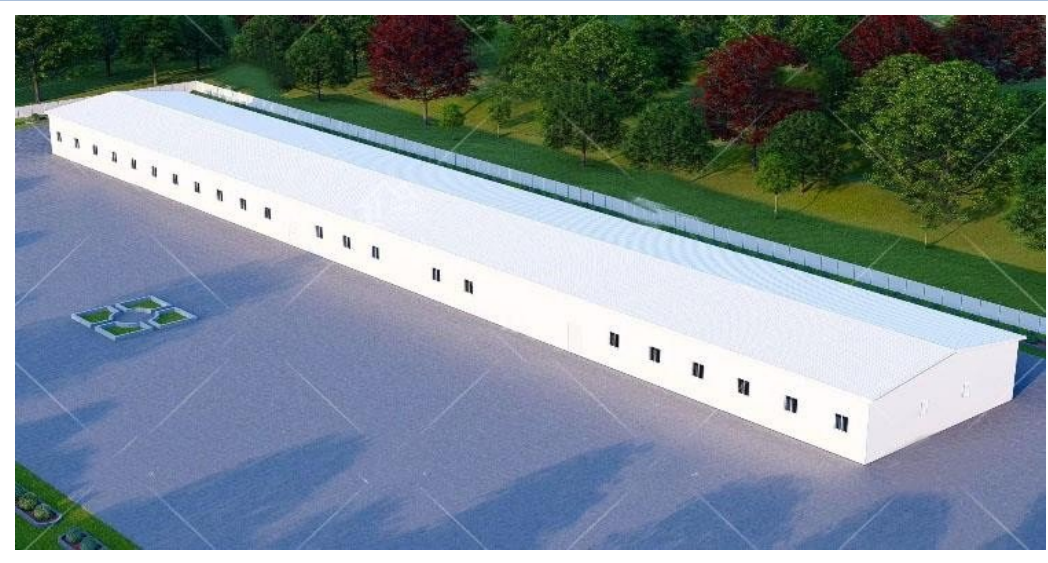
Hexpress Hospital - Under Construction Wuhan 1000 Bed Hospital.



Hexpress Hospital - Wuhan 1000 Bed Hospital Internal.



Hexpress Hospital - Central African 100 Bed Hospital Facility.



Hexpress Hospital - Medical Emergency Field Facilities.



Single 20' Unit



Double 40' Unit

Our on site emergency facilities, bringing relief to areas in a matter of days or hours after an order is issued by the client. Single 20' or Double 40' Units available. Ease of shipping and ease of delivery to required on field site.

Hexpress Hospital - Medical Emergency Field Facilities. Double 40' Unit – Suggested internal layouts



Hexpress Hospital - Medical Emergency Field Facilities.



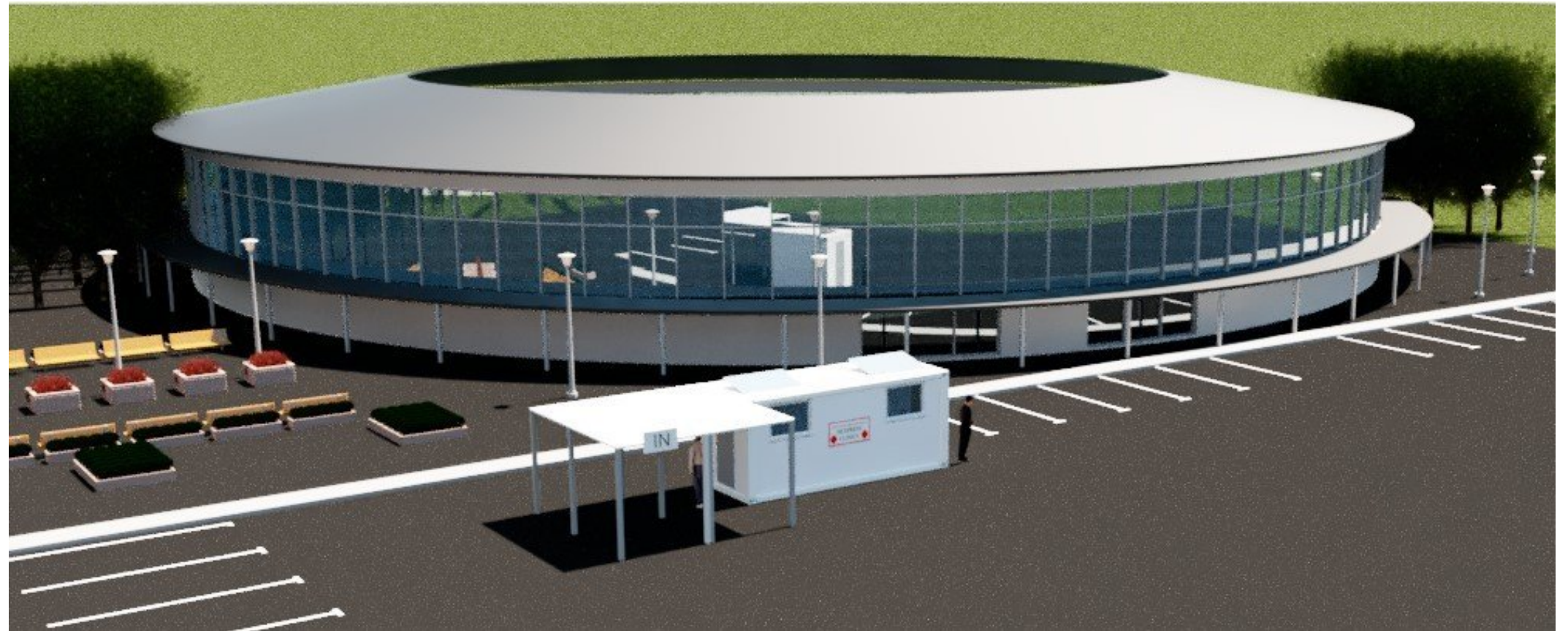
Our current largest emergency field site hospital consists of either 10 x Single 20' or 10 x Double 40' Units available. Ease of shipping and ease of delivery to required on field site.

Hexpress Hospital - Medical Emergency Field Facilities.



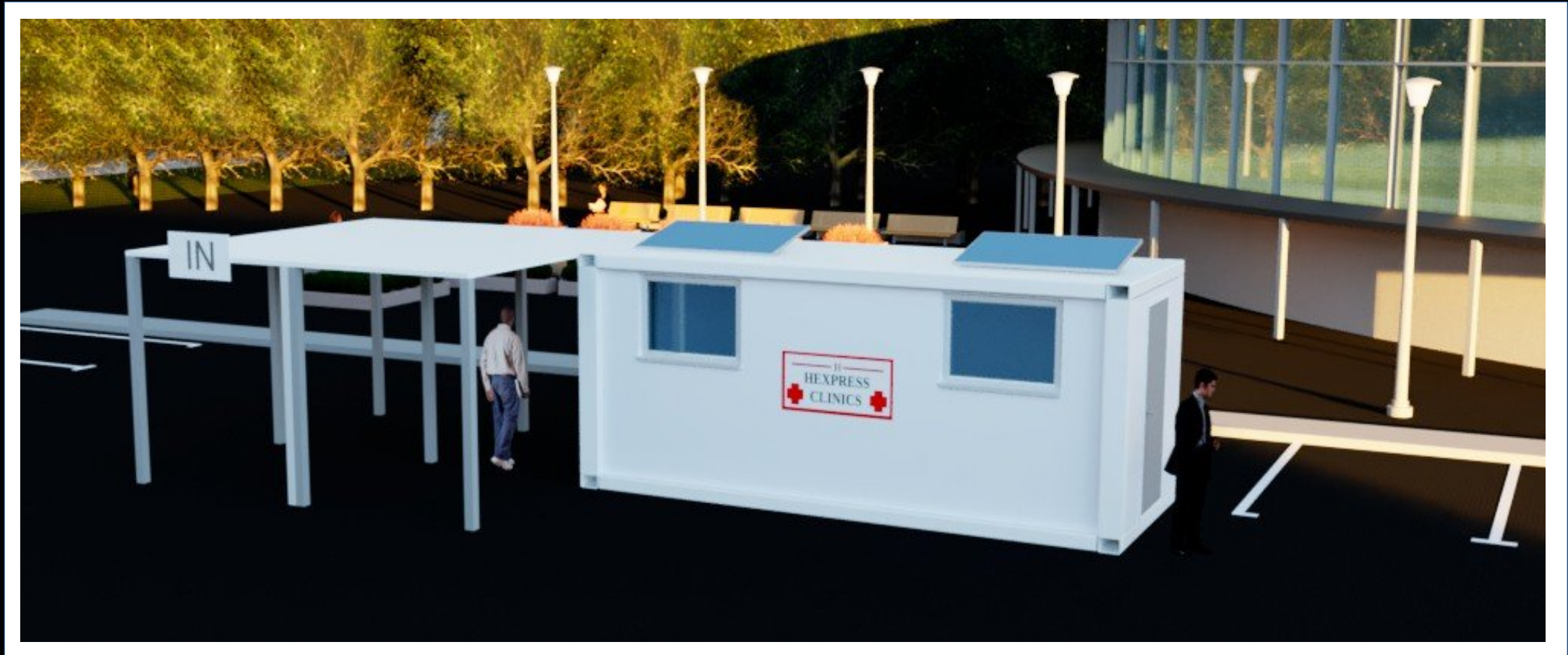
Suggested internal layout for the 10 x Double 40' Units version. Layouts can be altered to meet a clients specific needs.

Hexpress Clinics - 16m² Single Unit + Covered Waiting Area



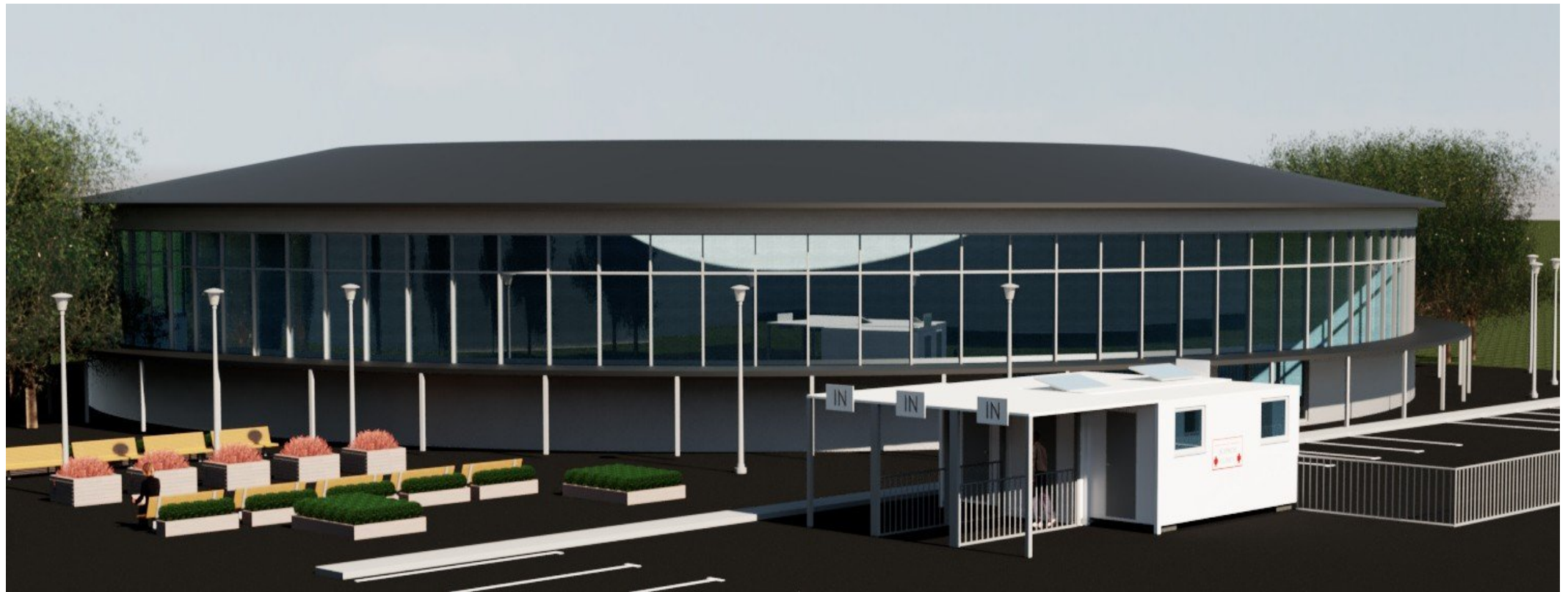
1 x 20' Clinic - 1 x Entrance Door 1 x Exit Door for fast patient throughput. These units are ideal for use as a doctors surgery and inoculation centre.

Hexpress Clinics - 16m2 Single Unit + Covered Waiting Area



Hexbuild Hospitals & Clinics - Built with Care in Mind.

Hexpress Clinics - 37m2 Expandable Single Unit + Covered Waiting Area



1 x 20' Expandable Clinic - 3 x Entrance Doors and 3 x Exit Doors for fast patient throughput. These units are ideal for use as a doctors surgery and inoculation centre.

Hexpress Clinics - 37m2 Expandable Single Unit + Covered Waiting Area



Hexbuild Hospitals & Clinics - Built with Care in Mind.

Delivering The Project- Important Points To Be Addressed:

The Hexbuild Team are always on hand to make the selection of which structure best suits a customer's particular requirements for any project and in order for us to facilitate speedy and smooth progress, we need to address the points as listed below.

General Issues

- ★ **Landscaping issues and aesthetic appeal on site.**
- ★ **Is the building selected the ideal one for the proposed use by the customer.**
- ★ **Is there a possibility that the customer will wish to add to the Hexbuild structure in the future?**
- ★ **Proposed site layout with regard to existing buildings & finishes required to match other local buildings.**
- ★ **Precise details of customers required layout and exterior and interior finish of Hexbuild structure with illustrative photos from customer of finishes if possible.**

Access to Build Site

- ★ **Access for container lorry to site/or close to site.**
- ★ **Consider possibility of over-lift of the Hexbuild structure to the site.**
- ★ **Distance from proposed site of the Hexbuild structure to the access road.**
- ★ **If the proposed site is to the rear of any building, is there access to the site, and what is the width/height of that access.**
- ★ **Possible Health and Safety Issues/Hazards – Overhead power cables/Public safety concerns/Local Hazards/Traffic conditions/Security on site.**

Delivering The Project- Important Points To Be Addressed



Utilities

- ★ Availability of access to deliver/install septic tank
- ★ Local Authority restrictions in connecting to utilities.
- ★ Position of possible sewer connection/site for septic tank
- ★ Quality of supply (Water pressure/Electricity Ampere's available).
- ★ Possibility of customer wanting to enlarge the supplied Hexbuild structure in the future.
- ★ Location of mains water/electricity/sewage and distance from the Hexbuild structure proposed final site.

CONTACT US

Hong Kong & United Kingdom:

Peter Hurst

TEL: +852 93073664 (Hong Kong)

TEL: +44 (0) 77439 48674 (UK)

Email: peterhurst@hexbuild.com

United Kingdom & Global:

Frank Daly

TEL: +44 (0) 7775 694157

Email: frank@hexbuild.com
orderlineglobal@gmail.com

PDQ HK Limited.
Units 2804-07, 28th Floor,
Man Yee Building,
68, Des Voeux Road Central,
Hong Kong.

COMPANY NUMBER 1595036.

www.hexbuild.com

