



HEXBUILD 'T' System

ASYLUM SEEKERS, REFUGEES & EMERGENCY ACCOMMODATION

Solutions to Problems



ABOUT HEXBUILD - the one-stop solution

Hexbuild, alongside our China manufacturing partner, is the leader of China's Light Steel Building Industry. Manufacturing energy-saving light steel structure buildings, we are committed to the research & development, application and popularisation of such structures on a global scale.

Our manufacturing facilities are spread over 16 sites including ones at Sanya, Changsha, Wuhan, Nanchang, Shanghai, Chengdu and Changqing. With 16 production lines, a total manufacturing space of 220,000m² and an annual production capacity of 10.92 million square meters of modular structures.

With a hard working team and state-of-the-art working environment. Our diversified structures offer turnkey solutions, with attractive exterior designs and finishes and practical interiors. A one-stop solution from design to supply.

Hexbuild supply practical, fast build and affordable solutions, including prefabricated houses, light steel villas, *container houses*, office blocks, schools, hospitals, factories, warehouses, portable toilets and security staff boxes. Hexbuild is committed to providing quality and efficient pre and after sale services, enhancing our reputation with our many customers around the World. These include in territories such as Angola, Ethiopia, Nigeria, South Africa, Somalia, Morocco, Russia, Kyrgyzstan, United Arab Emirates, Saudi Arabia, Iran, Iraq, Maldives, Vietnam, United States of America, Malaysia, Peru etc with usage of our solutions constantly expanding to many other parts of the globe.

We have assembled a group of high quality trained professional technicians and on-site installation teams, providing customers with a full and complete service from project conception, design, manufacture and construction, to final assembly and internal fixtures and decoration.

We ensure through our 25 years of experience building these structures, to offer our customers the most up-to-date, and effective solutions to their requirements.



Our Wuhan hospital facility, constructed at the outbreak of Covid-19 in Wuhan, China. A 1,000 bed facility built, ready for patient intake, within 10 days and the second in Shenzhen, 1,500 beds completed in 20 days.

HEXBUILD - SOLUTIONS TO PROBLEMS.

ASYLUM SEEKERS, REFUGEES & EMERGENCY ACCOMMODATION

HEXBUILD - **the one-stop solution**

Hexbuild, being aware of how The United Kingdom has been facing many issues regarding the accommodation of asylum seekers, refugees, and people seeking emergency housing solutions, have developed and offer the **Hexbuild 'T' Construction System**.

This system offers safe, clean and comfortable 'one stop' sites that bring not only sleeping, washing and toilet facilities but a complete range of buildings, including kitchens and dining rooms, units for education and medical needs, multi faith prayer rooms, recreational and exercise areas and virtually all amenities required by people arriving in the UK and fulfilling their needs until more permanent living arrangements are found to accommodate them.

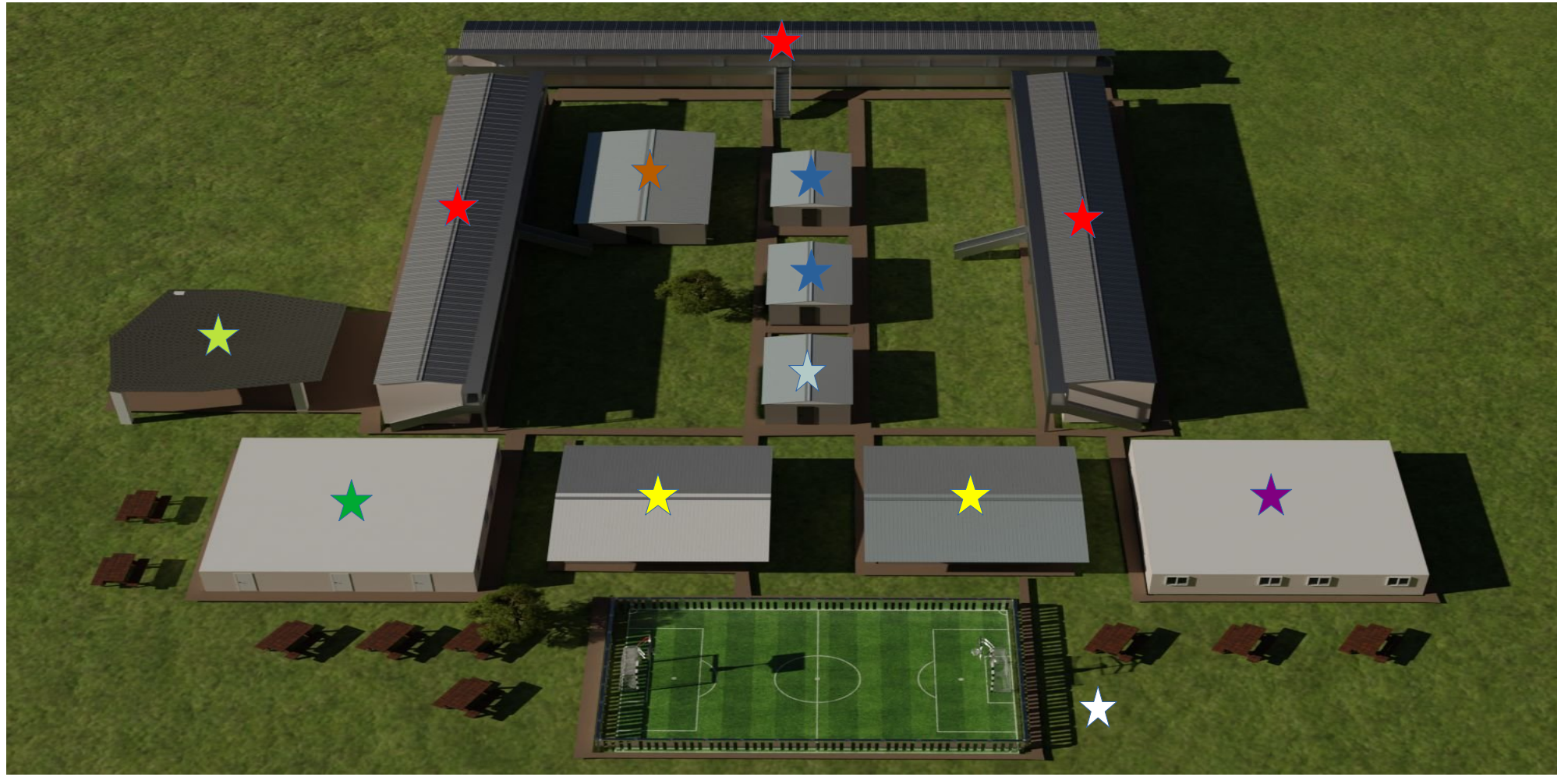
The UK already outspends many of its neighbours housing asylum seekers, with costs taking up nearly a third of the official government aid budget, and proving both unpredictable and unmanageable, and yet there are still concerns about the quality of housing provided to not only asylum seekers but many citizens on lower incomes. Refugee organisations are frequently reporting properties which the residents believe are unsafe, and they struggle to get help to rectify these potentially dangerous and in some instances, life threatening issues.

The Hexbuild System is constructed using the highest quality materials and adheres to all relevant UK construction regulations and literally 100's of square meters of buildings can be erected by very few workers in extremely short time frames, enabling the internal fixtures and fittings to be rapidly installed, allowing these sites to be ready and available for occupation within weeks, rather than months or even years, as with current 'traditional' building systems. No heavy lifting equipment is required to construct these light but very strong steel framed buildings. Our monthly factory production output rate is approximately 100,000 square meters and each 40' shipping container can transport 200 square meters of buildings.

The 'Hexbuild 'T' Construction System also offers an ideal solution for addressing the urgently required social housing needs in the United Kingdom, with such available stocks being at an all time low and many citizens living in unsuitable conditions and in severe cases, having to resort to hostel accommodation or even living on our streets.

Hexbuild and our partners, are able to address and resolve many of the serious concerns involving accommodation availability and living conditions, in both a fast and cost effective manner.

HEXBUILD - SOLUTIONS TO PROBLEMS.



★ CLASSROOMS X 2

★ TOILETS & SHOWERS X 2

★ ACCOMMODATION UNITS x 3

★ KITCHEN & RESTAURANT X 1

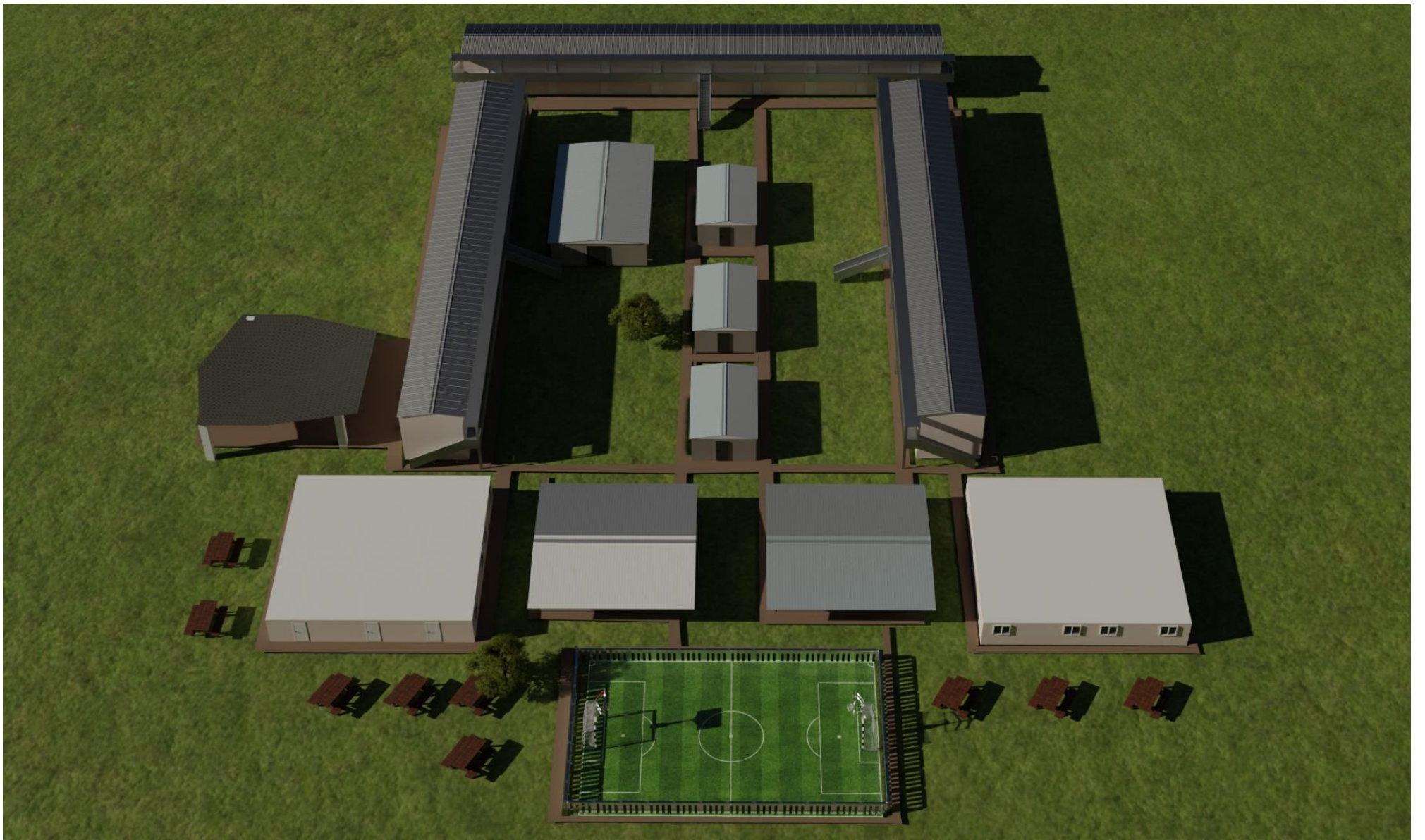
★ MEDICAL / COUNSELLING / ADMINISTRATION BLOCK X 1

★ PERSONAL STORE X 1

★ COVERED OUTDOOR AREA

★ MULTI-FAITH PRAYER ROOM x 1

★ MULTIPLE SPORTS USAGE COURT



ASYLUM SEEKERS, REFUGEES & EMERGENCY ACCOMMODATION

Centrally Located Shower, Toilets Units, Store & Prayer Room



Outer Complex Buildings: Kitchen/Dining Room, Classrooms, Medical Counselling & Administration Block, Sports Court & Covered Area and Seating



ASYLUM SEEKERS, REFUGEES & EMERGENCY ACCOMMODATION
2 Occupant Room Configuration

ASYLUM SEEKERS, REFUGEES & EMERGENCY ACCOMMODATION – Site Facilities:

Accommodation Rooms ★

Each separate unit is 5 x 4 meters (20m²), calmly decorated with central overhead lighting and individual bed lighting, electrical points with USB charging ports, and with a quality 2 Tier Bunk Bed facility can accommodate two adults in comfort. Rooms will have space for a writing Desk and Chair, a comfortable Lounge chair, a Shared split Wardrobe for cloths storage, a fridge, and a kettle. All rooms will have a window with curtains, a Mirror and coat hooks, and will be accessible from a 1-meter-wide covered walkway with a private front door, on either a ground or a first-floor corridor via a steel staircase.

Disabled rooms

These rooms are 10m x 4m with Wheelchair accessible doors. Fitted for single person occupancy, these rooms will include a Bathroom built as a Wet room, with floor level Shower, Wheelchair Height Basin that can be raised or lowered, and a Wheelchair accessible toilet with Push up bars.

Laundry room

On each accommodation floor, the room is a 4 m x 5m (20m²) with 2 washing machines 2 Dryers, Ironing Board, and Iron.

The Communal Toilet and Shower ★

This block will be fitted with 20 Toilets and Urinals / 20 Showers and 20 Hand Basin with Mirrors, Shaving Points, Lockers, and fixed benches for the comfort and security of users possessions. The Block size is 20m x 10m (200m²).

The 2 x Classrooms ★

Each unit is 10m x 10m (100m²) each with space for Tables and Chairs (150m² to accommodate up to 20 students at any one time, for both classes and for recreational use when available.

The Kitchen and Restaurant ★

15m x 15m (300m²) with a commercial kitchen facility and servery. The kitchen will have workspace for 10 cooking Hobs and ovens for individual cooking, and tables and chairs to accommodate up to 50 people at any one time. There will be 5 wash basins for cooking and washing of plates and cooking utensils. One cooker hob and sink will be adjustable and wheelchair user accessible.

ASYLUM SEEKERS, REFUGEES & EMERGENCY ACCOMMODATION – Site Facilities:

The Medical Examination / Treatment, Counselling, and Administration block ★

Is 15m x 15m (300m²) and provides several rooms for medical examination and Basic Treatment, Private rooms for Counselling, a Seated waiting area, and Administration rooms for staff and security personnel. It will also include 2 toilets and washbasins. There will be one office accessible private toilet for staff use with a small kitchen and staff room for Night Staff. There will also be a security room for on-site CCTV Monitoring.

Multi Faith Prayer Room ★

Is 15m x 10m (150m²) with simple washing (handbasins) and 4 x toilets room. A small additional 'reception' space would also be good as the Muslims all leave their shoes outside when they pray!

The Personal Store ★

Is 5m x 15m (75m²) and will contain up to 100 lockable compartments so that residents may store their personal possessions without taking up space in their accommodation rooms.

The Covered Outdoor

The area is 15m x 15m (300m²) and provides exterior seating for up to 50 people.

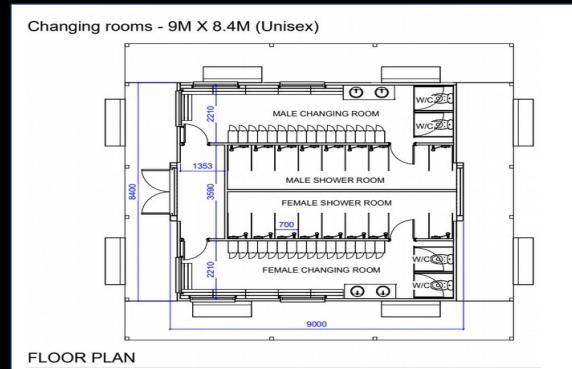
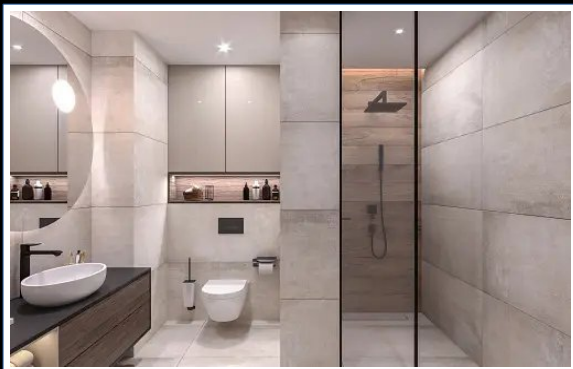
Recreation & Leisure

There will be a Fenced and marked recreation area for exercise and ball games.

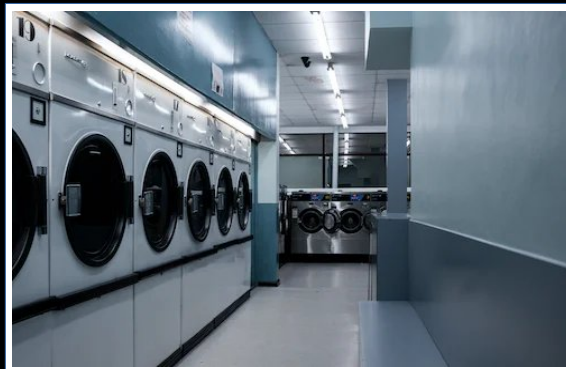
HEXBUILD - SOLUTIONS TO PROBLEMS.

ASYLUM SEEKERS, REFUGEES & EMERGENCY ACCOMMODATION – On Site Facilities:

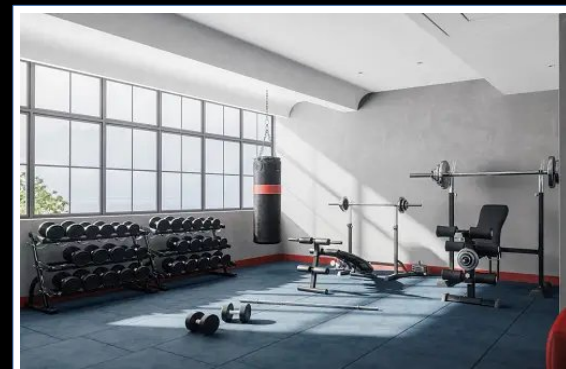
- * Toilets
- * Showers
- * Washbasins



- * Canteen
- * Laundry Room
- * TV/Video Room



- * Prayer Room
- * Gymnasium
- * Sports Hall



ASYLUM SEEKERS, REFUGEES & EMERGENCY ACCOMMODATION – On Site Facilities:

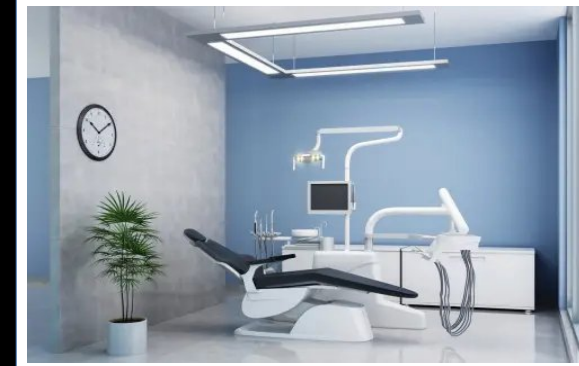
* Classrooms



* Medical Consultation



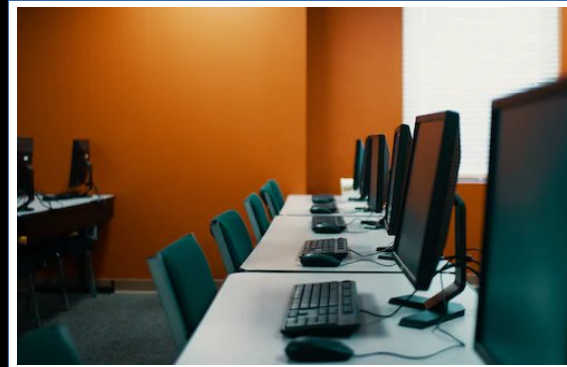
* Dental Consultation



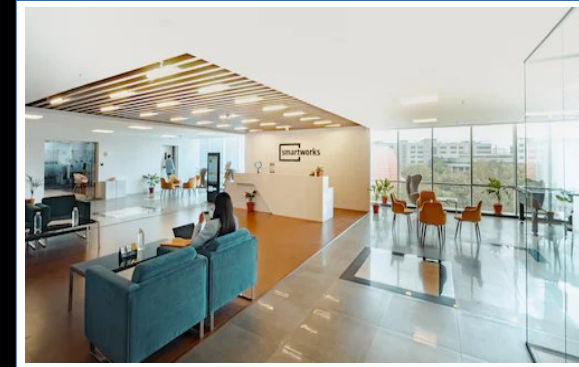
* Secure Storage



* Computer Room



* Reception

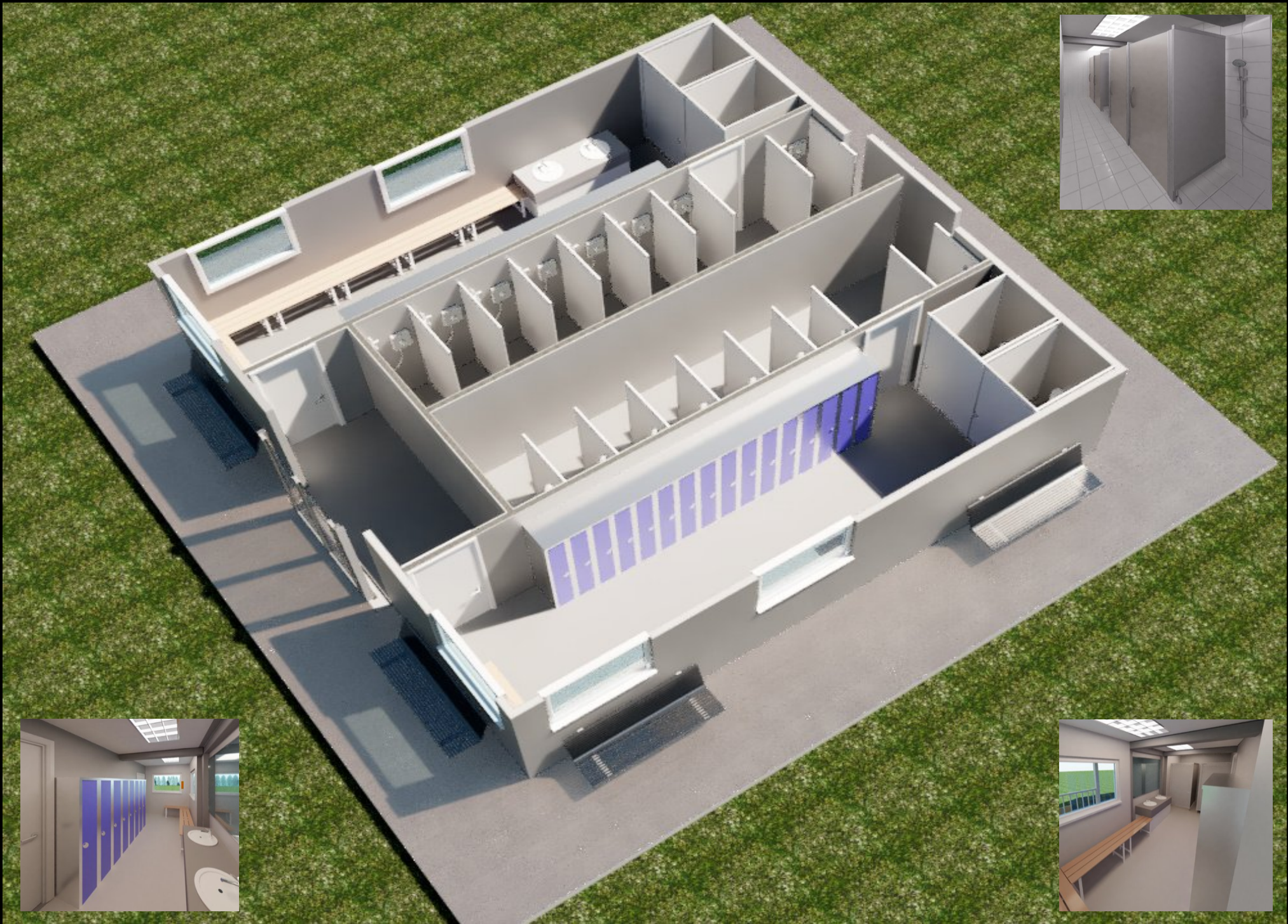


HEXBUILD 'T' System - Solutions to Problems

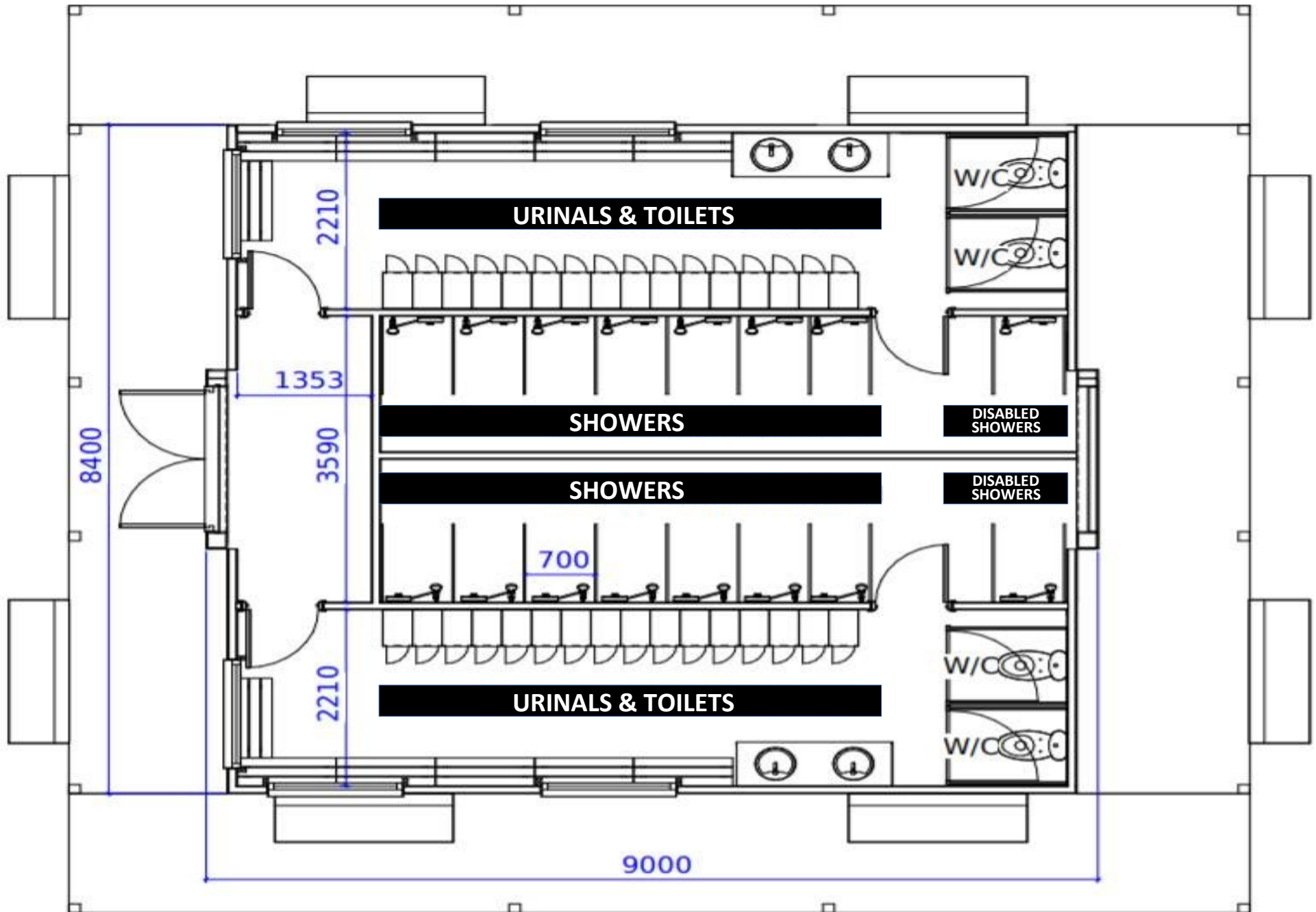
ASYLUM SEEKERS, REFUGEES & EMERGENCY ACCOMMODATION

The HEXBUILD range of changing rooms, with lockers, washbasins, toilets and shower facilities, bringing affordability, speed of build & modern design for asylum seekers, refugees & emergency situations.





Hexbuild Changing Rooms: 9.0 x 8.4m

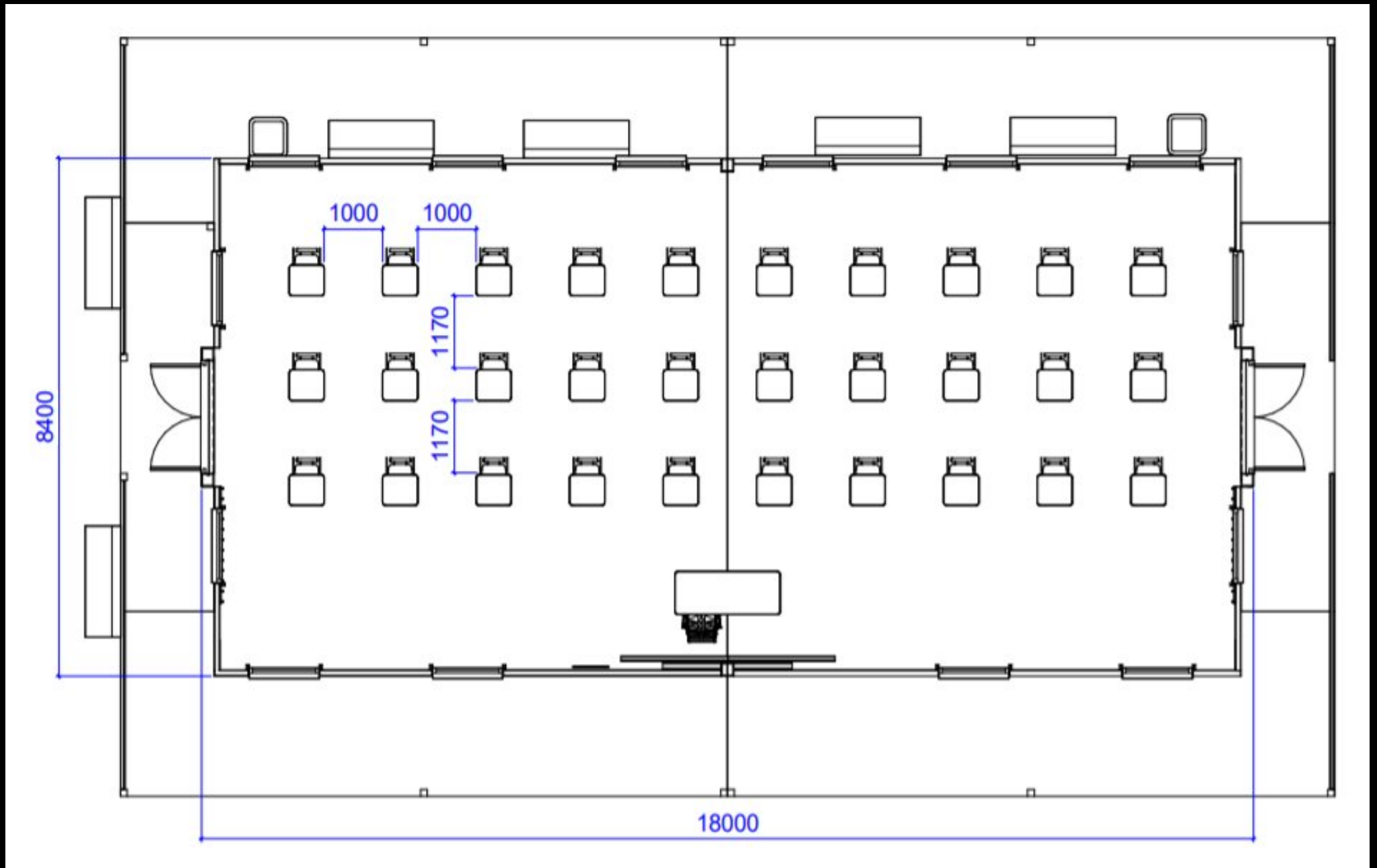


The HEXBUILD range of classrooms bringing education and leisure activity spaces for, asylum seekers, refugees & emergency situations.





Hexbuild Classrooms: 18.0 x 8.4m



'T' System – Specification



Item No: T01-ARE

Area: Ground Floor 2,780m², First Floor 1,620m²

Exterior Covered Area: 300m²

Total Area: 4,700m²

MOQ: 100m²

Country of Origin: China

Long Lifespan and Reusable

Single or Double Storey Available

Colours: Custom Colours Available

Shipping Port: Guangzhou/Shenzhen

Fast Construction and Ease of Installation

Excellent Heat Insulation, Waterproof & Fireproof

Lead Time: 15 -25 Days following receipt of P/O & Deposit Payment

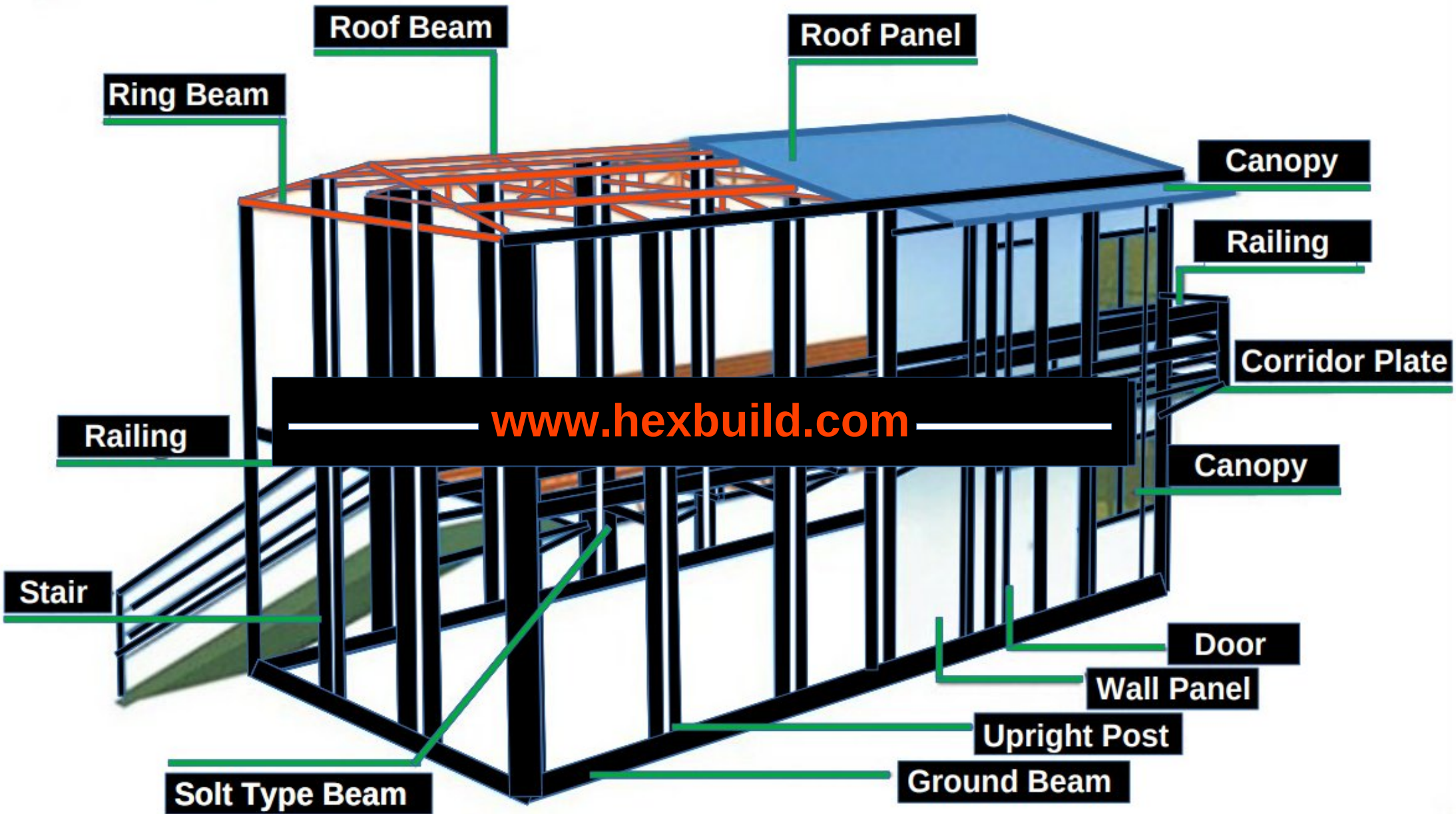
Eco Friendly Materials Used for Construction & no on-site waste caused

Flexible Internal Layouts Available to Satisfy Differing Situation Requirements

'T' System – Specification

<u>Item No:</u>	<u>Component</u>	<u>Specification</u>
	Wall Panel	50 Double Colour-Coated Steel EPS Sandwich Board (Steel: 0.286mm, EPS Density: 10kg)
	Roof Panel	50 Double Colour-Coated Steel EPS Sandwich Board (Steel: 0.286mm, EPS Density: 10kg) – Blue, White or Red
	Partition Wall	50 Double Colour-Coated Steel EPS Sandwich Board (Steel: 0.286mm, EPS Density: 10kg) + Aluminium Slot and Accessories
	Column	Double C-shaped Steel. Size: 80*40*1.8mm
	Roof Beam	C-shaped Steel. Size: 80*40*1.8mm & 50*40*1.8mm
	Tie Rod	CP8
	Ground Beam	Double C-shaped Steel. Size: 80*40*1.6mm
	Round Beam	Double C-shaped Steel. Size: 80*40*1.6mm
	Roof Purlin	Galvanized Angle Steel: 1.5m
	Door	50mm Double Colour-Coated Steel EPS Sandwich Door Size: 800*2,000mm
	Window	Plastic & Steel Window: 1,740*925mm

'T' System – Assembly Specification



'T' System – Ease of Installation



Fast Build Quality Modular Buildings at Affordable Prices

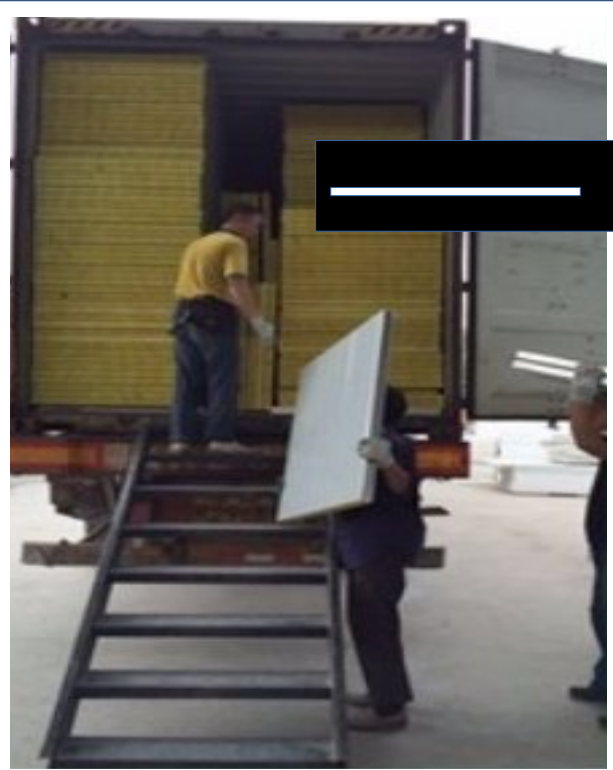
'T' System – Packing & Shipping



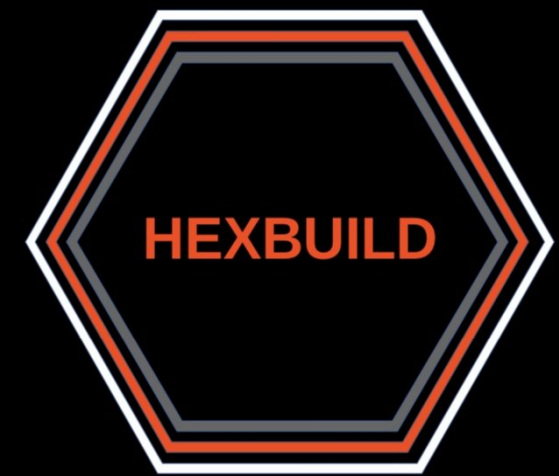
1 x 40' HQ
= 200m² of
T System

Production Rate:
100,000m² every
25 Days

www.hexbuild.com



Contact Us:



Quality Modular Fast Build Solutions at Affordable Prices

**Peter Hurst
Hong Kong
United Kingdom**

**Email: peterhurst@hexbuild.com
Tel: +852 93073664
Tel: +44 (0)7743 948674**

**Frank Daly
United Kingdom**

**Email: orderlineglobal@gmail.com
Tel: +44 (0)7775 694157 (UK)**

PDQ (HK) Limited

Units 2804-7, 28th Floor, Man Yee Building, 68, Des Voeux Road Central, Hong Kong.

Registered Company Number: 1595036