

**SAFEHOUSE**  
**WINDOWS & DOORS**

**Roll Screen  
Products**

---



## About Us

---

Advanced Hurricane Technology or AHT started with \$600 and a dream – the product of Jaime and Fernanda Zabala who immigrated to Naples, Florida from Ecuador looking for the American dream. AHT began as a family owned and operated storm protection service provider in 1993 under the name Imagen USA. Since then our family has developed new products that set the standards in the Hurricane Protection Industry.

Since its inception, AHT has been guided by its values—fairness, honesty and integrity— which are embedded in the way we operate our day to day, the products we manufacture and sell, and most importantly in the people who are a part of our AHT family.

**AHT promises to provide you with excellent products designed to protect your family, property and investments.**

AHT's success is in great part due to our customers. To better serve our clients we have grown into over 200,000 sq ft of storage and manufacturing space, in Ft. Myers, Florida and have expanded to the mid Atlantic with AHT DC, the Caribbean with Puerto Rico AHT, and South America with AHT Ecuador.



# Manufacturing process of screens



Scan me for Videos



## Our Process



·The AHT hurricane and mosquito/solar screens can be customized by size, color of fabric, and color of webbing and thread.

·Our new top of the line and highly tuned screen welding machine adds zippers and webbing to the screens with ease and speed without sacrificing quality.

·The final screen you receive at your door is a product of careful manufacturing and quality control. We not only measure twice but we measure at every step to ensure a perfect fit.

·AHT's Screen Department and their passion for the work they do, embodies our commitment to quality.



**AHT Products are powered by AHT Motorization and Automation**



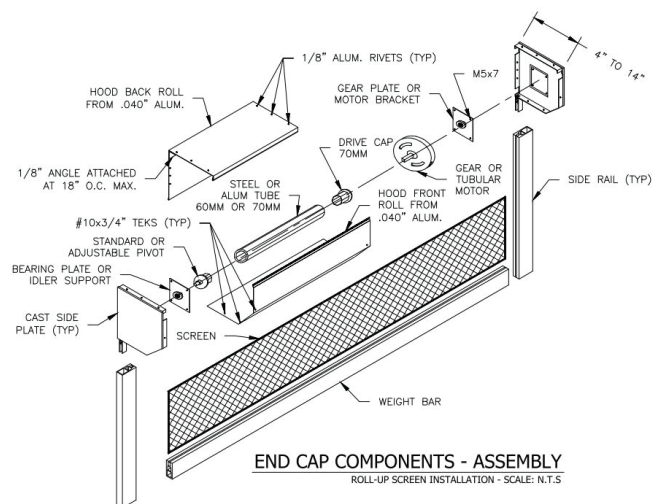
## SuperSpan Screens (Hurricane rated)

Our polypropylene hurricane screen has become extremely popular for both residential and commercial sites. An excellent option for lanais, commercial common areas, or entryways, our motorized hurricane screen is versatile in use and slim in profile but sacrifices none of the robust hurricane protection for which AHT products are known. AHT's hurricane screen is available in several colors and can be utilized for openings up to **24 feet** in width.



## Product Features

- ✔ Simple and fast installation
- ✔ Max span 294 inches
- ✔ Max design pressure 140 Psf
- ✔ 100% polypropylene
- ✔ Burst strength 750 psi





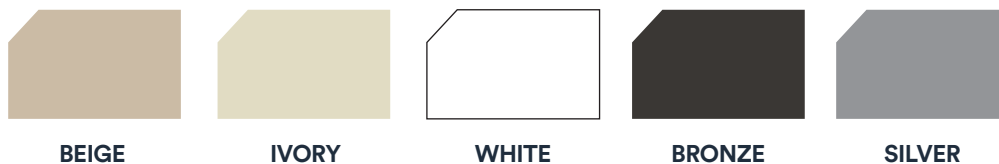
## Product Features

---

- ✔ Air flow 175 cfm.
- ✔ UV retention 70%.
- ✔ Approved by the 2020 Florida Building Code 7th Edition.
- ✔ Tested To Astm E 330 / E 1886 / E 1996 Standards.
- ✔ Impact Level D = 9lb Large Missile Impact.
- ✔ Embossed Hoods and Mill Finished Products Available.
- ✔ **Housings up to 32 feet.**
- ✔ Tracks and Housing made of Aluminum Alloy 6063 T6 for strength and durability.
- ✔ Aluminum surfaces are powder coated to prevent damage and oxidation.

## Track and Housing Colors:

---



## Screen and Webbing Colors:

---



Mix and Match Colors of webbing and screen

## Mosquito / Solar Screens

---

Whether for privacy, bug control or sun control, our motorized solar and bug screens can help. Smooth and simple remote-controlled operation allows you to close your pergola, outdoor patio or fire pit. Slim and attractive, these screens are a wonderful addition to any residential or commercial space.

### Product Features

---

- ✔ Max Span 360 inches
- ✔ Simple and fast installation
- ✔ UV Inhibitor Coated Screen
- ✔ Aluminum surfaces are powder coated to prevent damage and oxidation
- ✔ Tracks and Housing made of Aluminum Alloy 6063 T6 for strength and durability





---

**QUIET OPERATION**

**SLIM IN PROFILE**

**WIDE RANGE OF SCREEN COLORS**



### Track and Housing Colors:

---



**BEIGE**



**IVORY**



**WHITE**



**BRONZE**



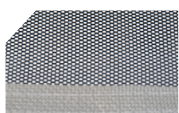
**SILVER**

### We carry Twitchell and Suntex fabrics.

---



**BLACK**



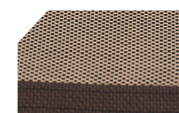
**GREY**



**TAN**



**WHITE**



**BEIGE**

**\*Mix and Match Colors of webbing and screen**



**AHT Means Quality**



**SAFEHOUSE**  
WINDOWS & DOORS

---

---