



LUBETRAIN RESOURCES SDN BHD

www.lubetrainresources.com

MAINTENANCE & RELIABILITY STRATEGIES WITH CERTIFICATION PREPARATION

CERTIFIED MAINTENANCE & RELIABILITY PROFESSIONAL

CMRP

Course Period : 5 Consecutive Days

CMRP Exam : 6th Day or within 6 Months

HRDC CLAIMABLE COURSE



CERTIFICATION

**THE CMRP CERTIFICATION IS
ADMINISTERED BY THE SMRP
CERTIFYING ORGANIZATION
(SMRPCO)**

THIS PROGRAM IS INDEPENDENTLY DEVELOPED TO SUPPORT EXAM PREPARATION AND IS NOT AFFILIATED WITH OR ENDORSED BY SMRPCO.

The **Certified Maintenance & Reliability Professional (CMRP)** credential is offered by the **Society for Maintenance & Reliability Professionals (SMRP)** through its certifying body, **SMRPCO**.

The **CMRP examination** is a comprehensive assessment designed to evaluate professional competence against globally recognized standards. It measures knowledge and skills across the **five (5) key pillars** of the SMRP Body of Knowledge (**BoK**):

1. **Business & Management**
2. **Manufacturing Process Reliability**
3. **Equipment Reliability**
4. **Organization & Leadership**
5. **Work Management**



THE CMRP CERTIFICATION

The **CMRP** certification is accredited by the **ANSI National Accreditation Board (ANAB)**, an independent third-party body that regularly evaluates certification programs against strict international criteria. It remains the only certification of its kind accredited under the **ISO/IEC 17024 standard**, ensuring global recognition and credibility.

Curated by **Lubetrain Resources Sdn Bhd**, this **five (5) days program** supports professionals **preparing for the CMRP certification** by combining the SMRP Body of Knowledge with practical industry insights, helping participants build both **exam readiness** and **real-world reliability competence**.

COURSE OUTLINE



MODULE III: Equipment Reliability

- *Determine equipment reliability expectations*
- *Evaluate equipment reliability and identify improvement opportunities*
- *Establish a strategic plan to assure reliability of existing equipment*
- *Establish a strategic plan to assure reliability of new equipment*
- *Cost-justify selected plans for implementation*



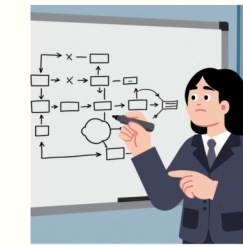
MODULE I: Business & Management

- *Create Strategic direction and plan for M&R operations*
- *Administer Strategic plan*
- *Measure Performance*
- *Manage organizational plan*
- *Communicate with stakeholders*
- *Manage environmental-health-safety risk*



MODULE IV: Organization & Leadership

- *Determine organizational requirements*
- *Analyze organizational capability*
- *Develop the organization structure*
- *Develop personnel*
- *Lead and manage people*



MODULE II: Manufacturing Process Reliability

- *Understand the applicable processes*
- *Apply process improvement techniques*
- *Manage effects of change to processes and equipment*
- *Maintain processes per applicable standards and regulations*



MODULE V: Work Management

- *Identify, validate, and approve work*
- *Prioritize work*
- *Plan work*
- *Schedule work*
- *Execute work*
- *Document work*
- *Analyze work and follow-up*
- *Measure work management performance*
- *Plan and execute projects*
- *Use information technologies effectively*
- *Manage resources and materials*

THE CMRP EXAM

The CMRP is an **experience-based certification** requiring strong practical knowledge. The exam is **computer-based** at Pearson VUE centers with immediate results, and **certification remains valid for three (3) years** with recertification required thereafter.

ELIGIBILITY

Education & Work Experience

- **No formal education or minimum work experience** required; however, practical maintenance or reliability experience is strongly recommended.

Prior The Exam

- Complete & submit the CMRP exam application at **smrp.org/CMRP-Registration**
- **Have not sat for the exam within the past six (6) months**

CERTIFICATION EXAM

The Exam Format

- **110 multiple-choice questions** to be completed within **2.5 hours**
- **Computer-based exam** conducted at Pearson VUE testing centers worldwide
- **Covers the five (5) pillars of the SMRP Body of Knowledge**
- The exam is **scored on a pass/fail basis**, and candidates must demonstrate **competency across all five (5) pillars**
- **No external reference materials allowed**; on-screen calculator provided
- Candidates **must sit for the exam within 6 months** of application approval





LUBETRIN RESOURCES SDN BHD
www.lubetrainresources.com

WHY CERTIFY?

Prepare. Perform. Get Certified.

- **Structured** CMRP exam preparation aligned with **SMRP Body of Knowledge**
- **Practical insights** for real-world maintenance & reliability application
- Build confidence to **pass the exam** and **apply best practices**
- Enhance **career growth, credibility, and earning potential**
- Gain a **globally recognized certification** valued across industries



WHO SHOULD?

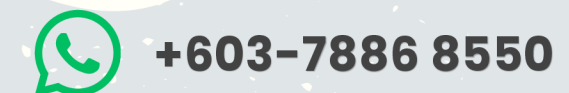
Prepare. Perform. Get Certified.

Engineers, supervisors, managers, and **professionals involved in maintenance, reliability, operations, and asset management**, or those pursuing CMRP certification.

THIS PROGRAM IS INDEPENDENTLY DEVELOPED TO SUPPORT EXAM PREPARATION AND IS NOT AFFILIATED WITH OR ENDORSED BY SMRPCO.



REGISTER NOW



HRDC CLAIMABLE COURSE



CERTIFICATION

THE CMRP CERTIFICATION IS
ADMINISTERED BY THE SMRP
CERTIFYING ORGANIZATION
(SMRPCO)