

HIPLEX

HI PLEX TECHNOLOGIES

forming your Ideas

**SUSTAINABLE FOOD STORAGE AND PACKAGING
SOLUTIONS WITH PET CONTAINERS**

ABOUT US

HIPLEX is a thermoforming company with humble beginnings dedicated to producing small and large volumes of products in the Food Industry, Agriculture, Consumer Goods, Appliances, Healthcare and pharmaceuticals, Construction, Electrical and Electronics, Automotive, Stationeries, and other industrial needs. HIPLEX uses PET material in cost-effective and high-quality packaging.

Hiplex Technologies offers thermoformed PET packaging containers. Whether you need a small batch of custom-formed parts or a large-scale production run, we have the capabilities and expertise to deliver.

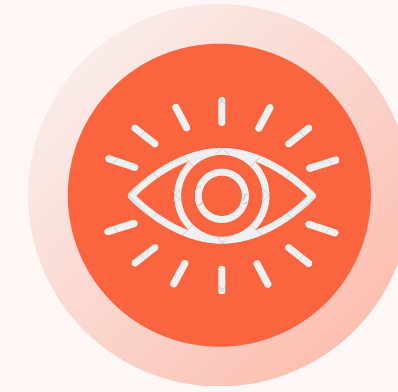
We are committed to providing our customers with exceptional formed products and services that meet their needs and exceed their expectations.



OUR SERVICES

Hiplex is an independent Indian manufacturing and packaging company that produces rigid PET packaging containers for leading branded companies across India. We will be one of your best options to meet PET product storage and packaging demands because of our creativity, customer service, effective product manufacturing, integrated in-house design, labeling, top-quality mould making, and thermoforming products.

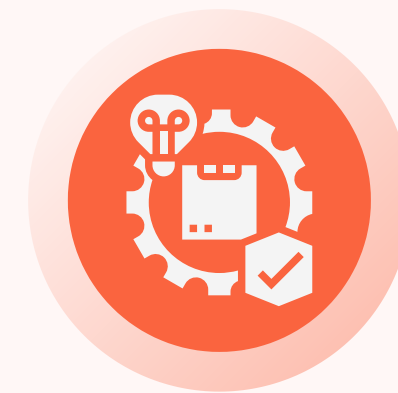
We focus on, Commitment to quality, Research & Development High-Class presentation, the best customer support, and innovative design for cost-effective, quality packaging and storage for PET products that are delivered on time and within budget.



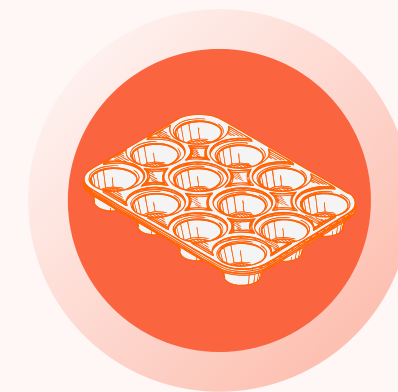
**VISUAL IDENTITY +
BRANDING**



**PRODUCT DESIGN +
PACKAGING**



**SAMPLE MODEL –
PROTOTYPE**



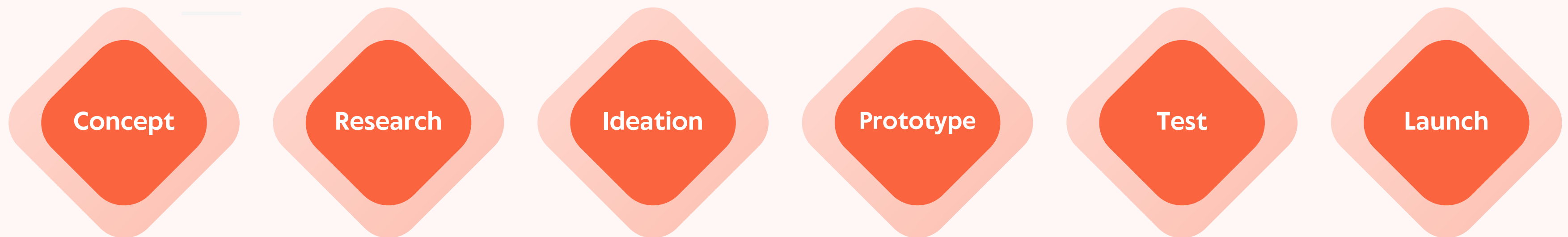
TOOL ENGINEERING

THERMOFORMING

Hiplex has been thermoforming innovative food packaging solutions that combine outstanding shelf appeal and environmental sustainability with superior functional performance

We deliver unique customization products

Hiplex is an end-to-end packaging consultancy From research and idea generation to concept drawings and rapid prototypes through to production line testing and market launch. The cutting-edge centre creates packaging solutions specifically for each client's needs. Hiplex has been developing cutting-edge food packaging solutions that combine excellent shelf appeal, environmental sustainability, and superb functional performance, including high barriers for product shelf-life extension.



From research and idea generation to concept drawings and rapid prototype through to production line testing and market launch.

OUR PRODUCTS

Turn your ideas into Innovative
PET Package Design

Our core competence in package design, materials & machinery makes us the perfect partner for the packaging of mid-to-high volume consumable products. Providing packaging solutions for retail to general consumer packaging with high transparent food-grade sheets. Square boxes, round boxes, sweet boxes, mushroom boxes, Cake containers, Egg trays, meal trays, Juice jars and beverage glasses, blisters, clamshells, Industrial trays and to shelf displays and boxes. A wide choice of ready-to-go packaging that is designed to suit various food applications at cafes, restaurants, and more..

High Quality, Competitive Price



FOOD PRODUCTS

FOOD TRAYS, BAKERY ROUND, SQUARE, RECTANGLE AND
HINGED BOXES



BAKERY BOXES



MEAL TRAYS



Meal Trays - 4, 5, 6, 8 Cavities

The range is designed with special features to suit a variety of serving purposes

SMALL CONTAINERS



Small Containers - Wide range of small round containers

ROUND CONTAINERS



100Gram



300Gram



450Gram

Round Containers with flat lids

ROUND CONTAINERS



Round Containers - Lids and Wide range of round containers

SQUARE CONTAINERS



250Gram



450Gram



650Gram

Square Containers with raised lids

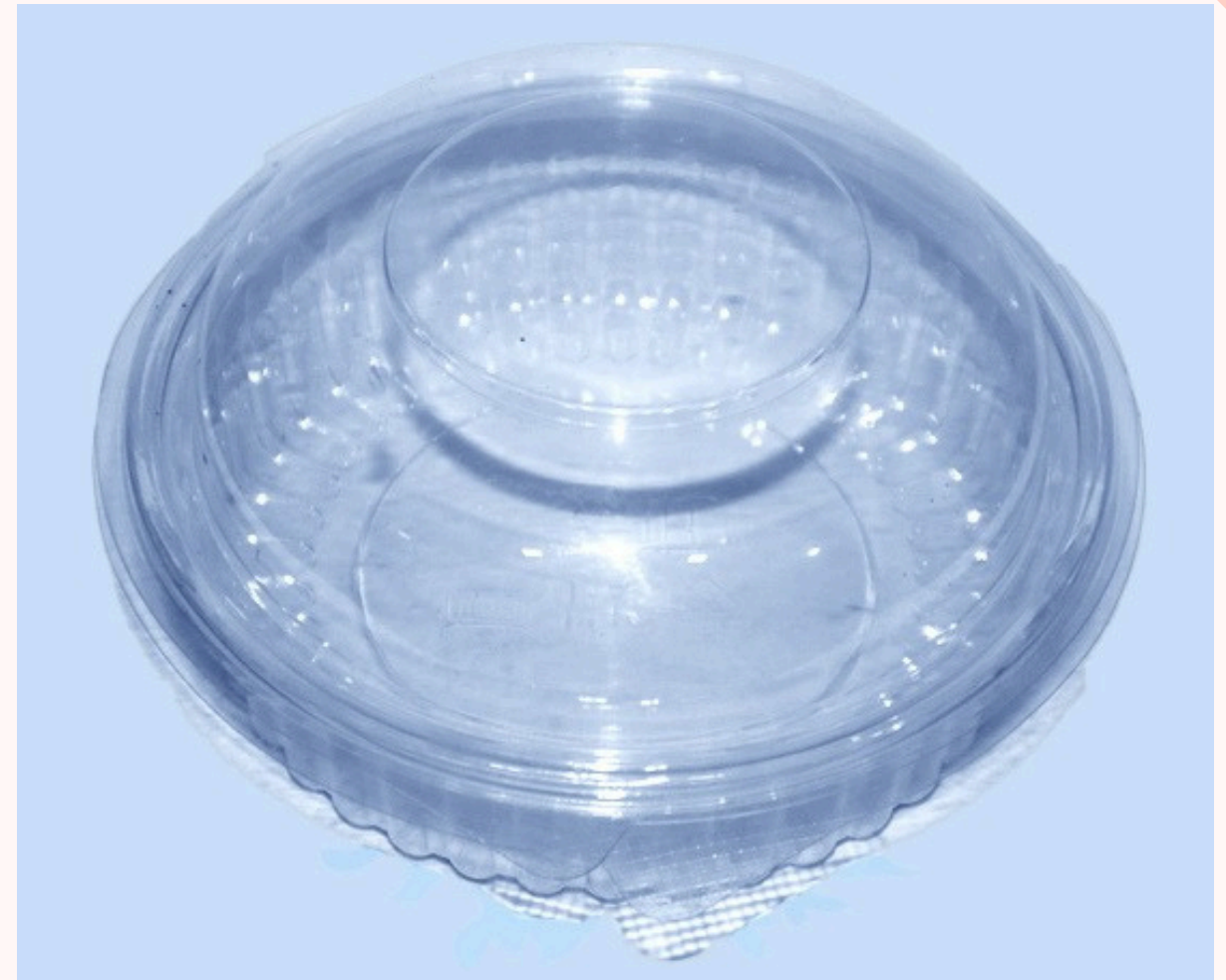
SQUARE CUPS



100Gram 250Gram

Square Cups with Seal Friendly

COOKIES, CAKES & BURGER BOXES



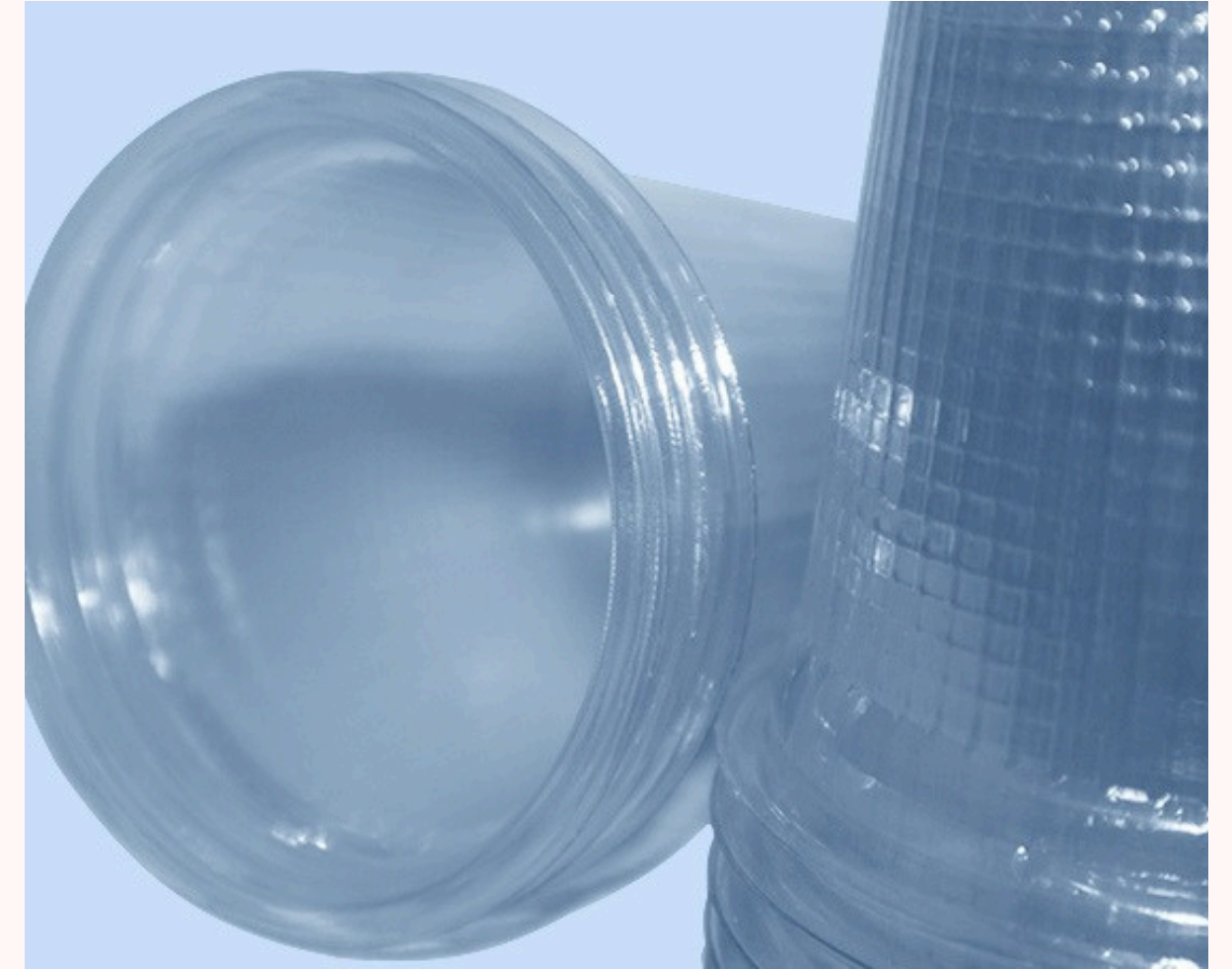
Cookies, Cakes & Burger Boxes – Wide range of raised Lids Cookie Boxes, Cakes, and Burger boxes

JARS - JUICE CUPS



Jars - Juice Cups - Wide range of Juice jars and cups

BEVERAGE GLASSES



Beverage glasses - Wide range of Beverage glasses

SWEET BOXES



Sweet Boxes - Collections of Clear and White Sweet boxes

SWEET BOXES



Hinged Sweet Boxes - Collections of Clour and White
Sweet hinged boxes

CHOCOLATE CONTAINERS



Chocolate containers with raised lids

MUSHROOM TRAYS



Mushroom Trays with strong pattern bottom

CONSUMER PRODUCTS



TOY BLISTERS



Thermoformed PET toy blister packaging designed to meet the demands of modern retail—where safety, visibility, and consistency matter.

BATTERY BLISTERS FOR ELECTRONIC PRODUCTS



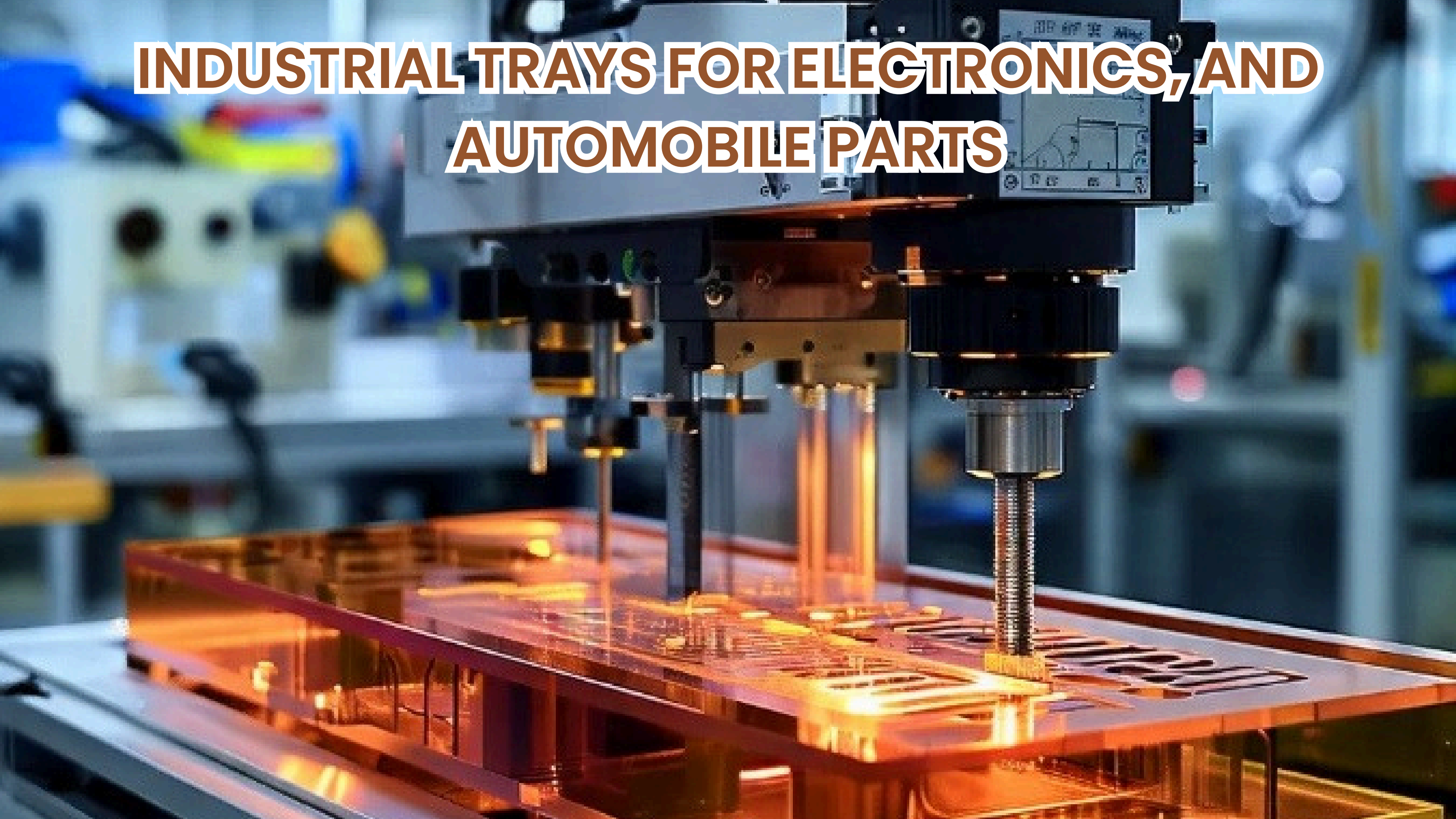
Ensuring batteries remain secure, tamper-resistant, and clearly visible at the point of sale.

HAND SHOWER BLISTER PACKAGING

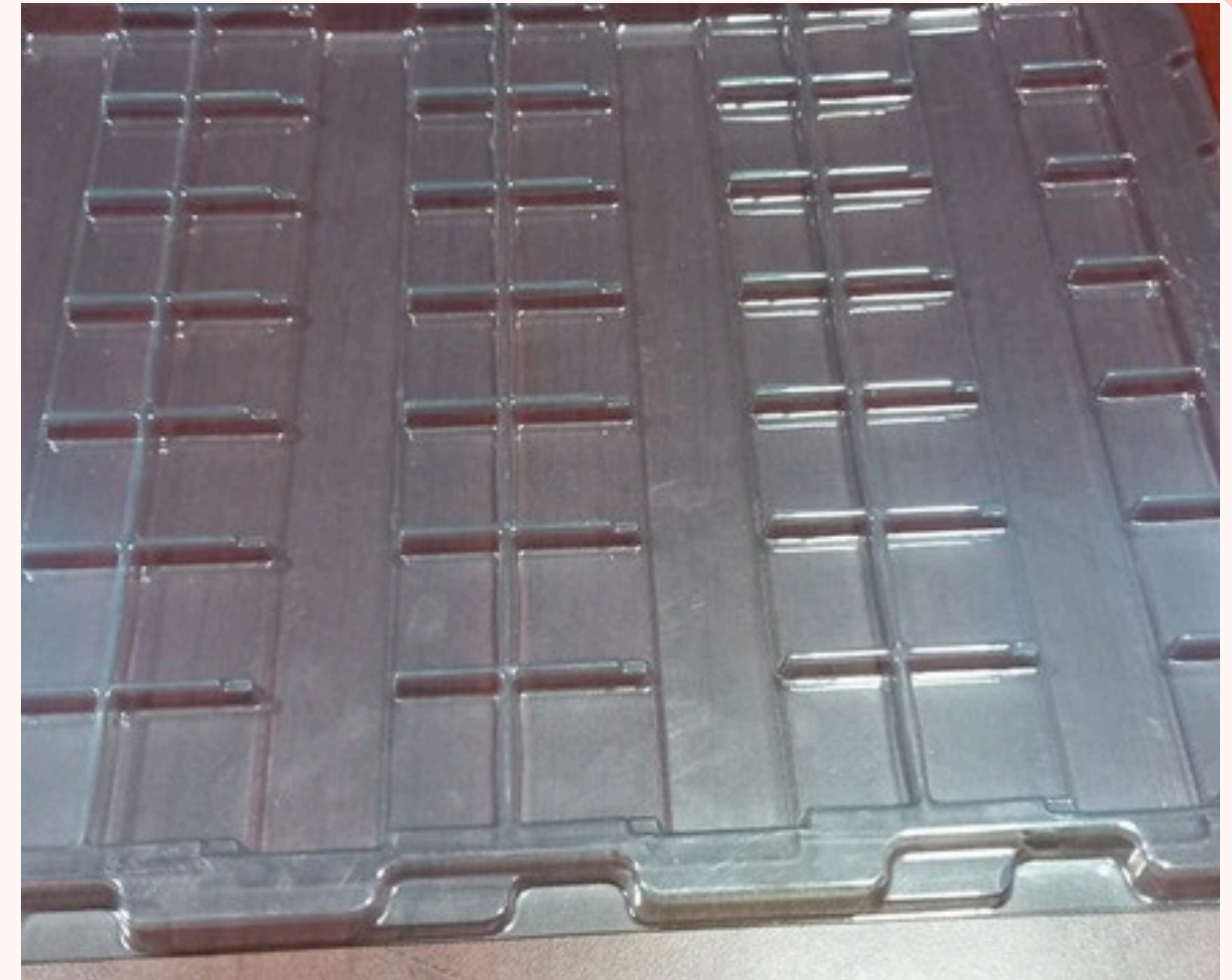
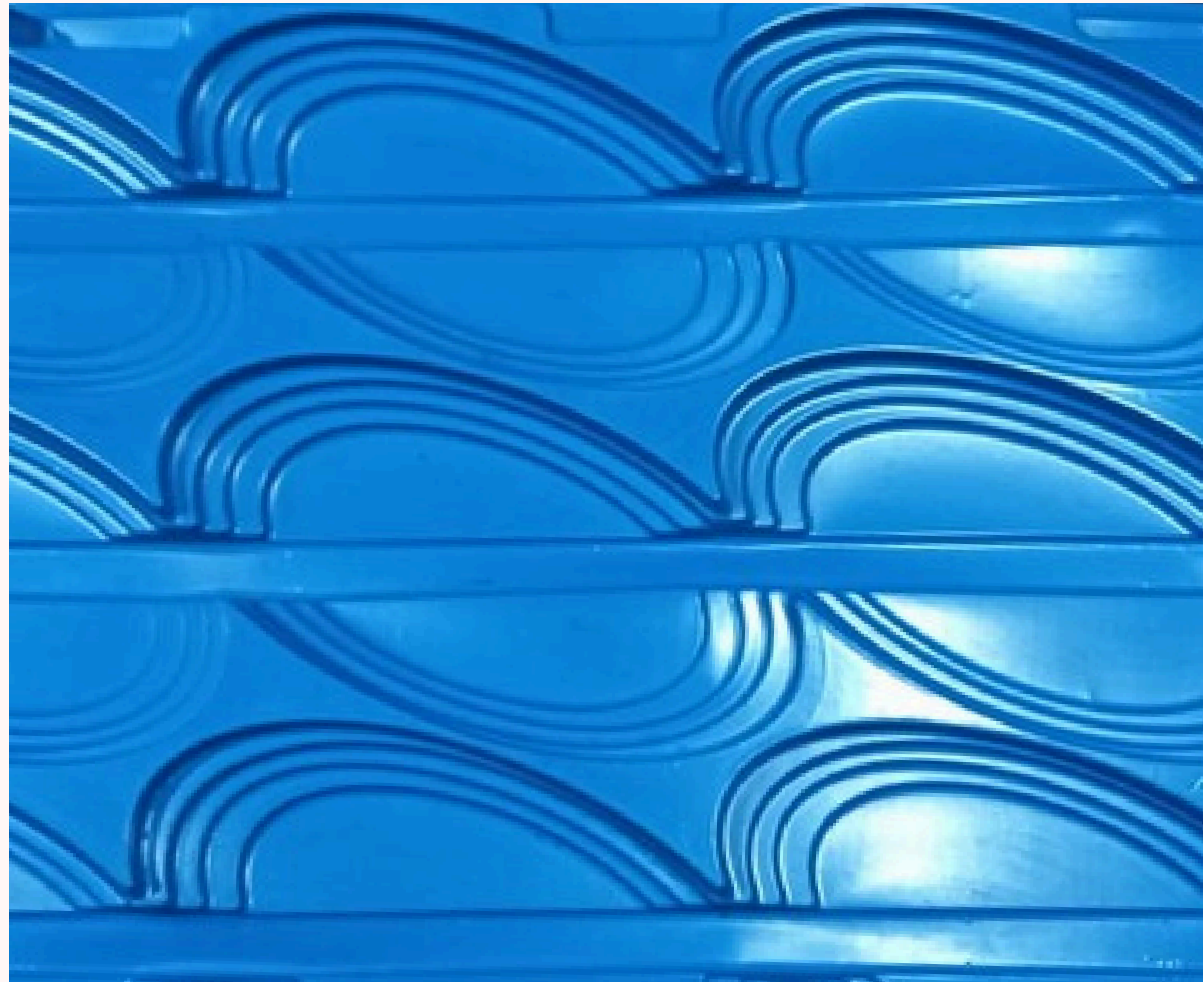


This blister is a shiny, metallic surface made of high-quality steel that enhances the professionalism of the product to showcase.

INDUSTRIAL TRAYS FOR ELECTRONICS, AND AUTOMOBILE PARTS

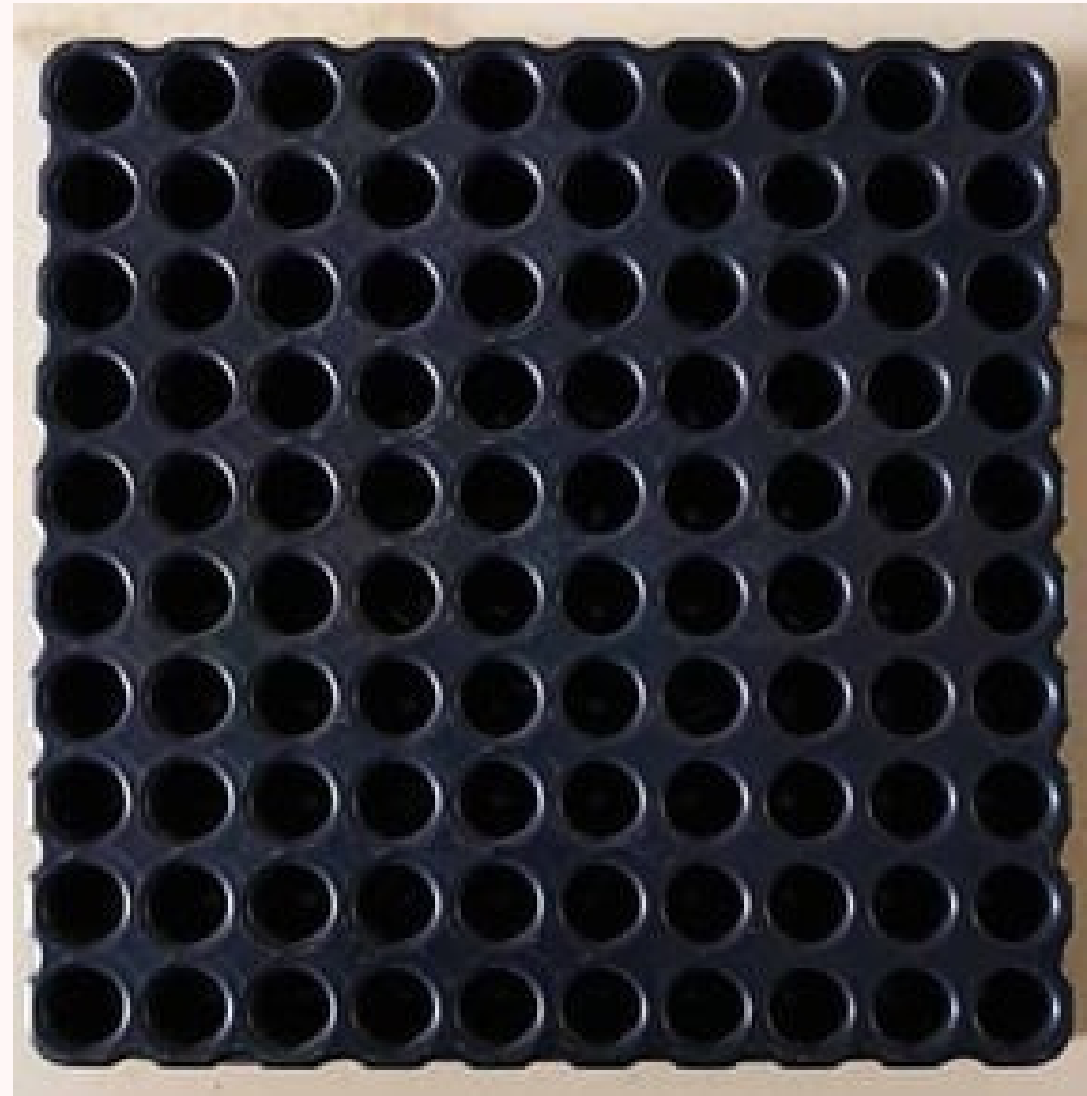


INDUSTRIAL TRAYS FOR ELECTRONICS, AND AUTOMOBILE PARTS



Automobile Trays

INDUSTRIAL TRAYS FOR ELECTRONICS, AND AUTOMOBILE PARTS



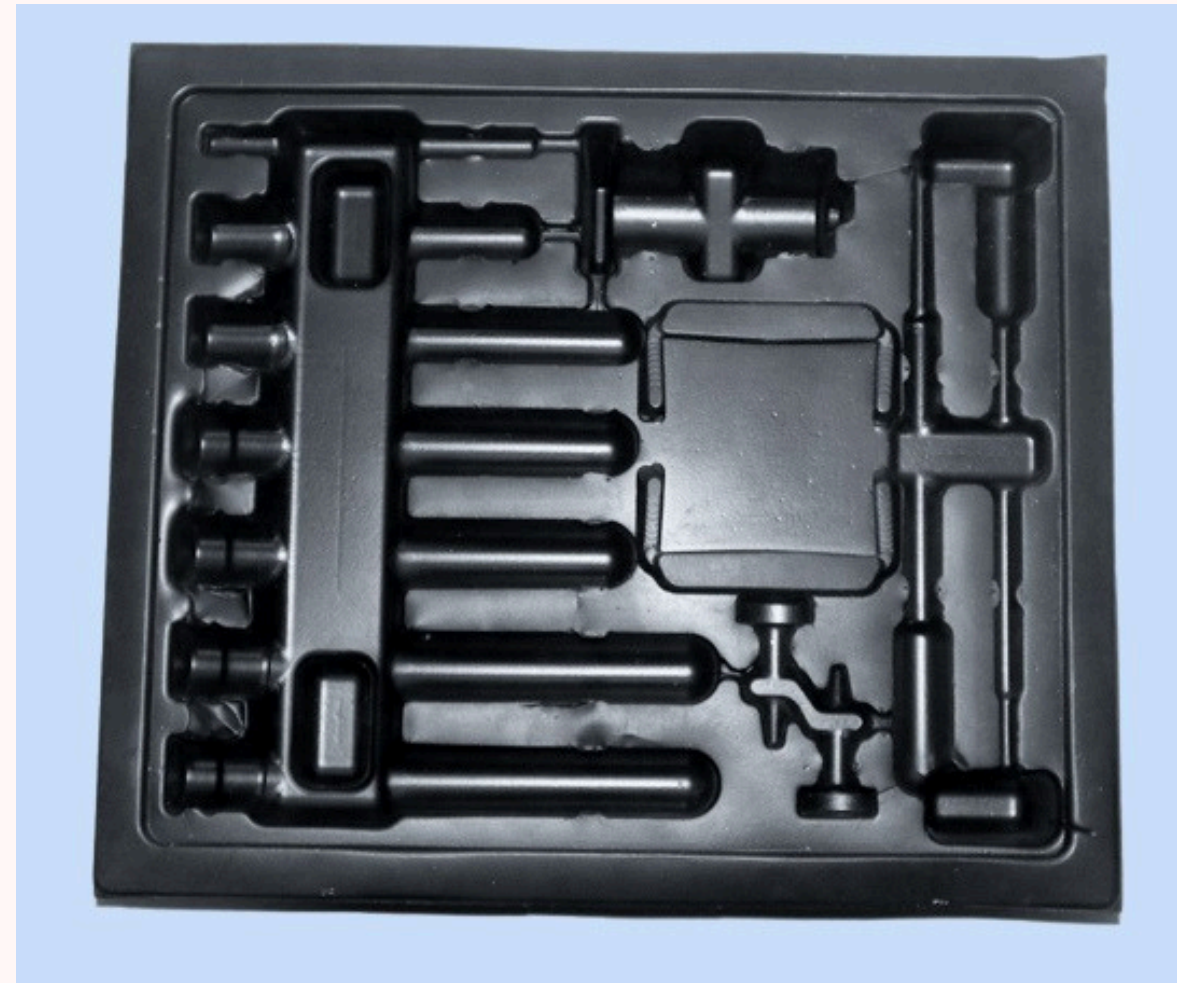
Automobile Trays

MEDICAL TRAYS AND BLISTERS



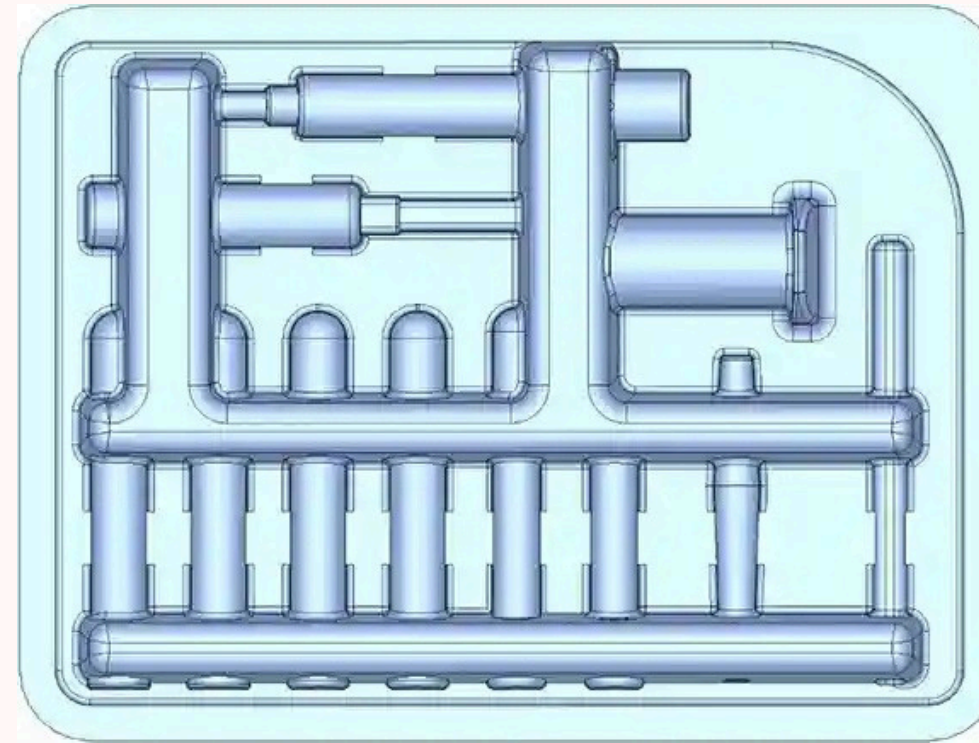
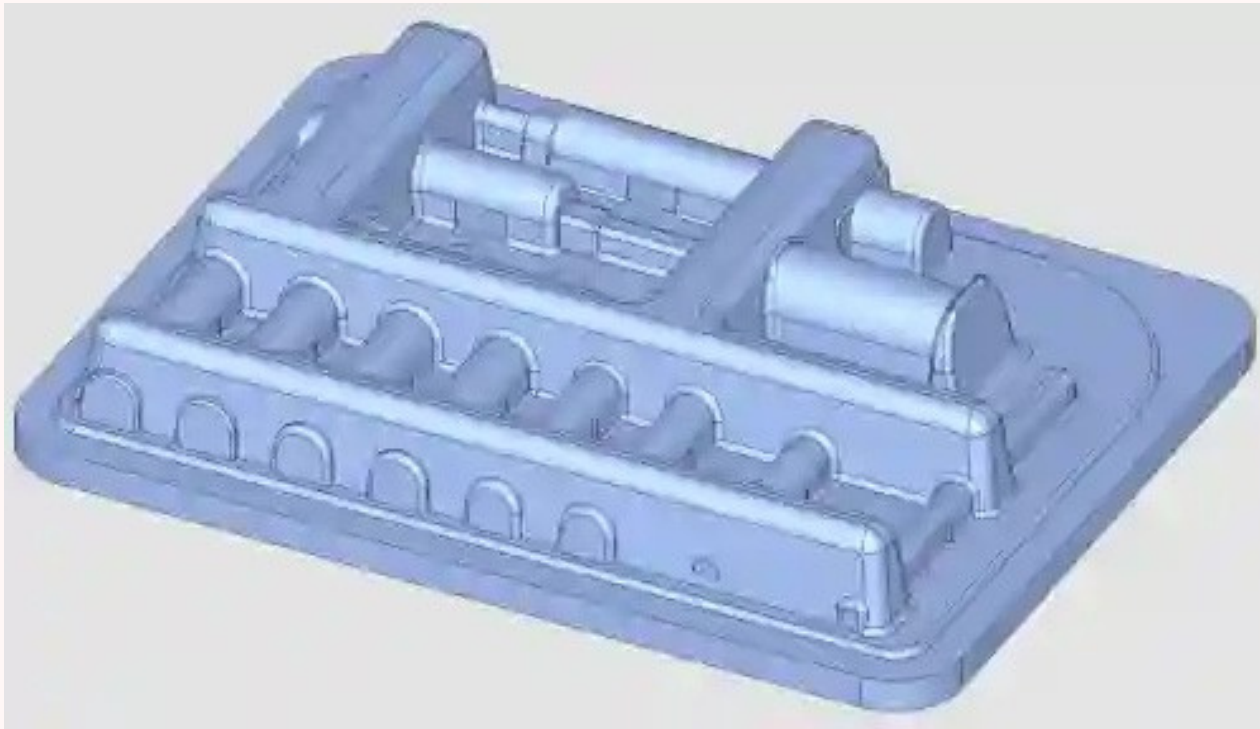
Manufactured from high-quality PET material, the trays are available in clear transparent PET for easy visual inspection and black PET for enhanced contrast and automated inspection applications.

MEDICAL TRAYS AND BLISTERS



Medical Trays & Blisters

MEDICAL TRAYS AND BLISTERS



Medical Trays & Blisters

OUR PRIDE CUSTOMERS

◆ **HI5 LMR**

◆ **AMIRTHA PET**

◆ **RKK TRAVELS**

◆ **ALCHEM DIAGNOSTICS**

◆ **STACUS Solution Pvt. Ltd.**

◆ **GURU FISH FARM**

◆ **MAXPET POLYMERS**

◆ **SRI DAIRY**

◆ **RASEE ENTERPRISES**

◆ **SUN SHINE TELELINKS**

◆ **SHREE GURU ENTERPRISES**

◆ **TOYS GARAGE**

◆ **GALVA Decoparts pvt ltd**

◆ **BRITISH AGRO**

CONTINUES....

Thank You for Choosing **HIPLEX**

WHY CHOOSE PET

- ✔ **Crystal Clear Visibility**
Enhances product appeal and shelf impact
- ✔ **Food-Grade & Safe**
Ideal for direct food and medical applications
- ✔ **Lightweight & Durable**
Strong protection with minimal material usage
- ✔ **Recyclable & Sustainable**
Supports eco-friendly packaging goals
- ✔ **Cost-Effective**
High performance at optimized cost

WHY CHOOSE HIPLEX

- ✔ **Custom Thermoforming Expertise**
Tailored solutions for every requirement
- ✔ **End-to-End Capability**
Design, tooling, and production under one roof
- ✔ **High Precision Manufacturing**
Consistent quality and accuracy
- ✔ **Scalable Production**
From small batches to-high-volume supply
- ✔ **Customer-Centric Approach**
Reliable service, timely delivery

WHY CHOOSE THERMOFORMING

- ✔ **Fast Development & Production**
- ✔ **Custom Shapes & Design Flexibility**
- ✔ **Lower Tooling Cost vs Injection Moulding**
- ✔ **Ideal for Transparent PET Packaging**

HIPLEX CAPABILITIES

- ☐ **PET Thermoformed Containers & Blisters**
- ☑ **Custom Mold Design & Tool Engineering**
- ☑ **Food, Consumer, Medical & Industrial Packaging**
- ☑ **High-Clarity Display Packaging Solutions**

CONNECT WITH US

Let us know about your upcoming packaging challenge, and we will be happy to help you.



Email

sivashankaran@gmail.com
info@hiplex.in



Contact

M.Sivashankaran - 9884044670



Web

www.hiplex.in



Address

**No.19 A, Mettuppalayam, Kumili, Kannivakkam, (P.O.), Vandalur (T.K.),
Chengalpattu District - 603202.**

THANK YOU

We appreciate your time and interest in HIPLEX Technologies. We look forward to partnering with you to deliver high-quality, precision thermoformed PET packaging solutions tailored to your needs.

Let's build smarter, safer, and more efficient packaging—together.

www.hiplex.in