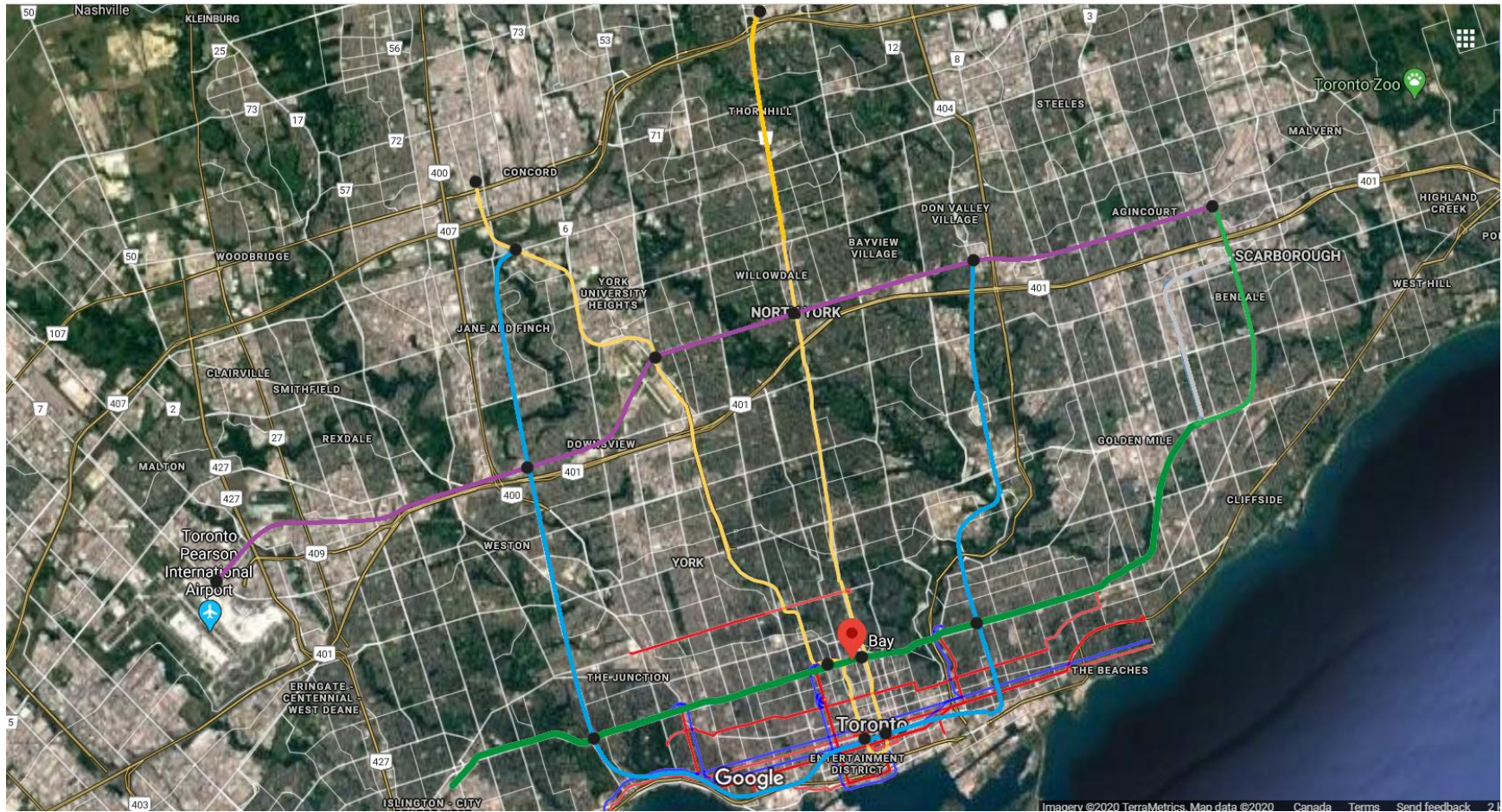


Toronto Metro

Written by Gwyer Webber (2019-2026)

April 2026

The four metro Lines would be extended to allow for fast travel times with fewer transfers across the City of Toronto. The metro lines can be built in sections when funding is available.



Line 1

The line would extend to Richmond Hill as planned.

Line 2

- The line would extend north as planned to McCowan Rd and Sheppard Ave.

Line 3 (Ontario Line)

- The line would extend west from the Exhibition grounds along the Rail Right of Way, then over to Jane St, and end at the Pioneer Village Station on Line 1. The line would be above ground where possible.
- The line would extend north along Don Mills Rd to Sheppard Ave with a connection to Line 4.

Line 4

- The line would extend east along Sheppard Ave and over to McCowan Rd.
- The line would also extend west along Sheppard Ave, over to Wilson Ave, Rexdale Blvd, New Woodbine Go Station, and over to the planned Toronto Pearson International Airport Regional Transit Centre. The line would be above ground where possible.
- Upgrading the line to fully automated (no drivers) would allow the 4 car trains to run at higher frequency before increasing the number of cars. All platforms would be built to the 6-car length to allow for growth.

Toronto Pearson International Airport



Average Speed

The table below shows the average speed of some rail transit systems being built or are in service in Canada.

City	Toronto Streetcar	Toronto LRT	Toronto LRT	Toronto Metro	Toronto Metro	Vancouver Skytrain	Montreal REM
Line	Tram 501	Finch West	Eglinton	Line 2	Line 4	Expo Line	Deux-Montagnes to Gare Central
Average Speed	14.5km/hr	20km/hr	28km/hr	33km/hr	41km/hr	45km/hr	49km/hr
Average Distance Between Stations	275m	650m	800m	873m	1375m	1500m	2000m

Note: The average speed is calculated using the distance of the line and the time it takes to travel that distance including the station stops. Travel time is based on the TTC Trip Planner and Metrolinx estimates on Finch LRT and Eglinton LRT.

Travel Times

- The travel time from the Toronto Pearson Airport (YYZ) to Malvern Town Centre on Line 4 would be approximately **56** minutes.
- The travel time from YYZ to Malvern Town Centre via the Eglinton LRT and Line 2 would be approximately **91** minutes.
- The travel time from YYZ to Malvern Town Centre via the Finch LRT would be approximately **89** minutes.

Disclaimer

The author is not a professional planner or consultant. The document is written to show a rail transit option for Toronto. The calculations as accurate as possible based on information online.