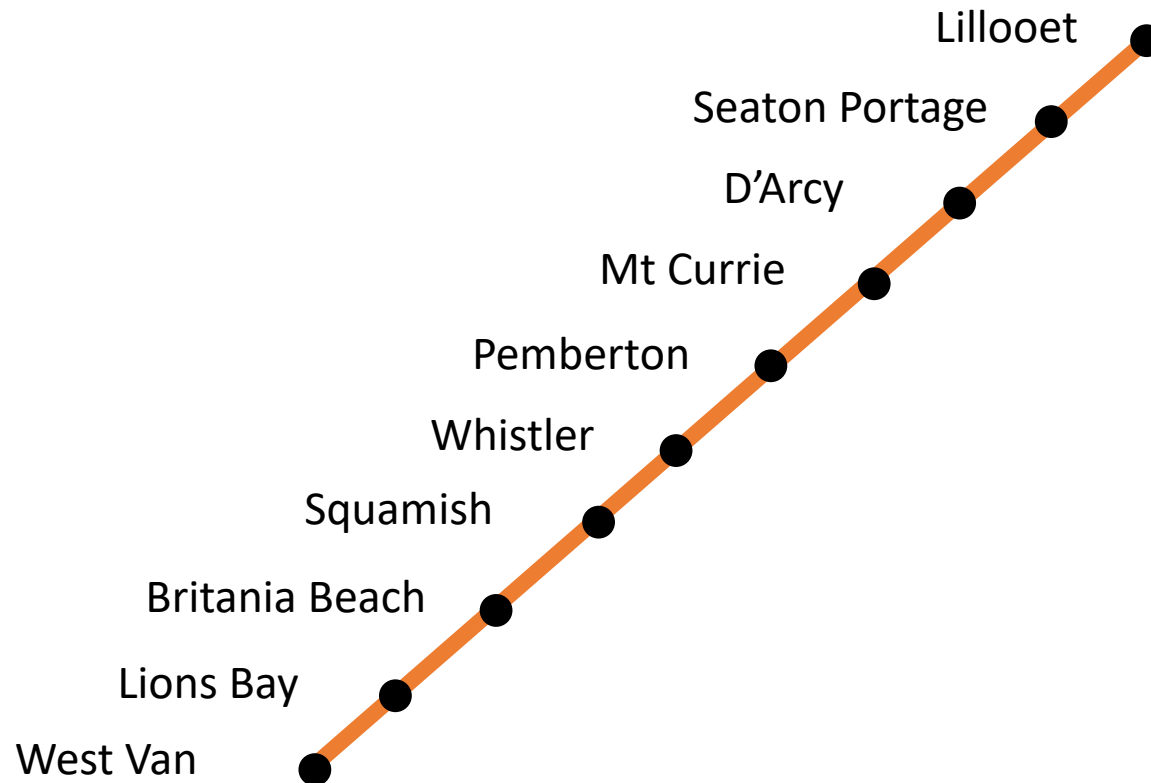


Squamish-Lillooet Intercity Rail

Written by Gwyer Webber (1999-2025)

April 2025

This option shows an Intercity Rail passenger service from West Vancouver to Lillooet on the CN Rail Line. There would be two trains with one starting at each end. The line could extend to Prince George in the future.



Rolling Stock

- The Stadler Flirt Hydrogen Fuel Cell Multiple Units (ZEMU) are FRA compliant trains.
- Two trains plus spare for a frequency of every 4 hours.
- Four trains plus spares for a frequency of every 2 hours.
- Eight trains plus spares for a frequency of every hour.

Fare Zones

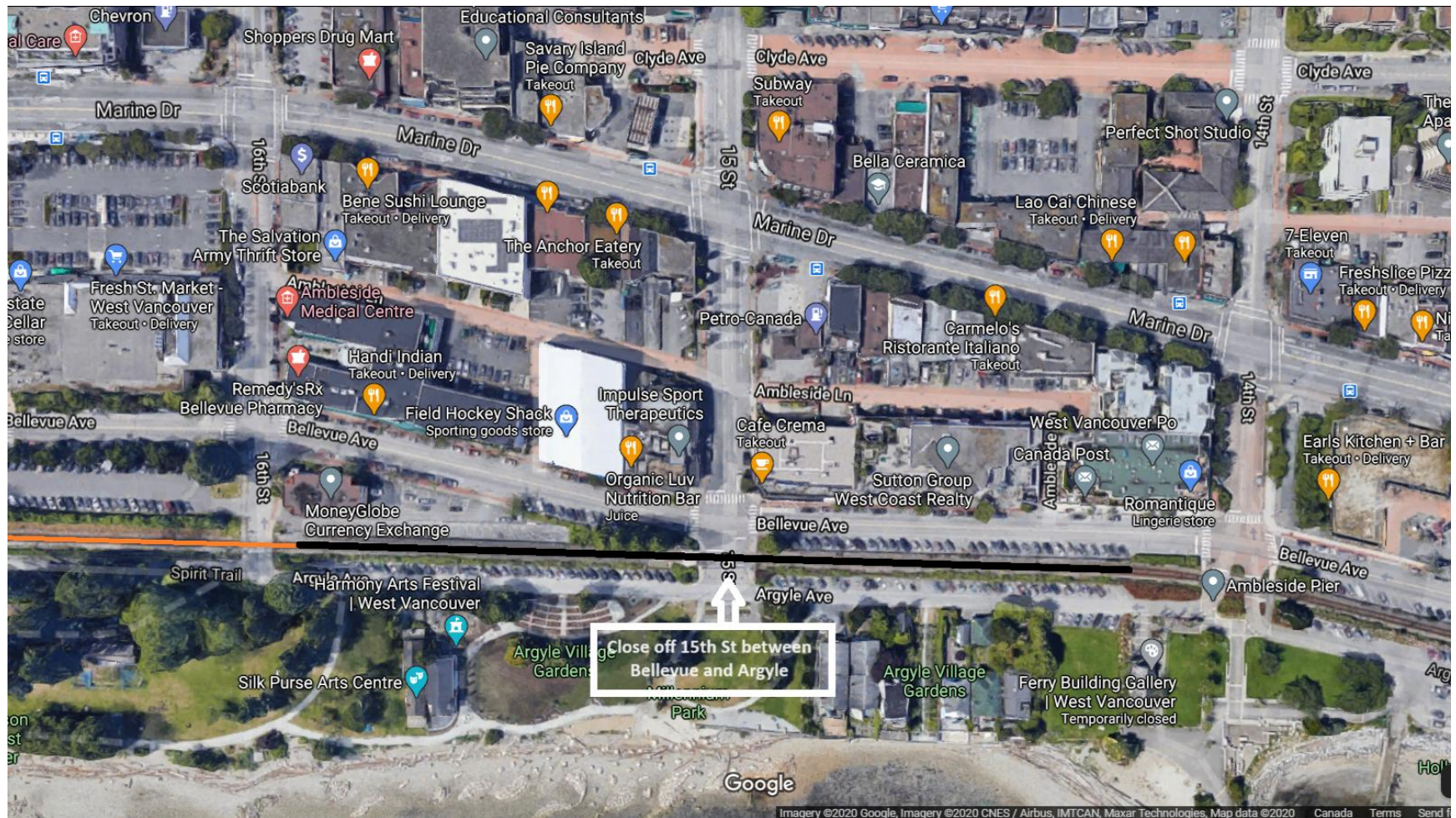
Zone	1	2	3	4	5	6	7
City	West Van	Britannia	Whistler	Pemberton	D'Arcy	Seaton Portage	Lillooet
	Lions Bay	Squamish		Mt Currie			

Zones	1	2	3	4	5	6	7
Fares	\$3.25	\$6.50	\$9.75	\$13.00	\$16.25	\$19.50	\$22.75
Monthly Pass	\$90	\$130	\$170	\$210	\$250	\$290	\$330

Note: Children 12 years and under ride free. Children 5 years and under must be accompanied by someone 12 years and older.

Example: (Individual Ticket) Lillooet-West Van \$22.75 / Pemberton-Squamish \$9.75 / Squamish-West Van \$6.50

West Vancouver (Ambleside)



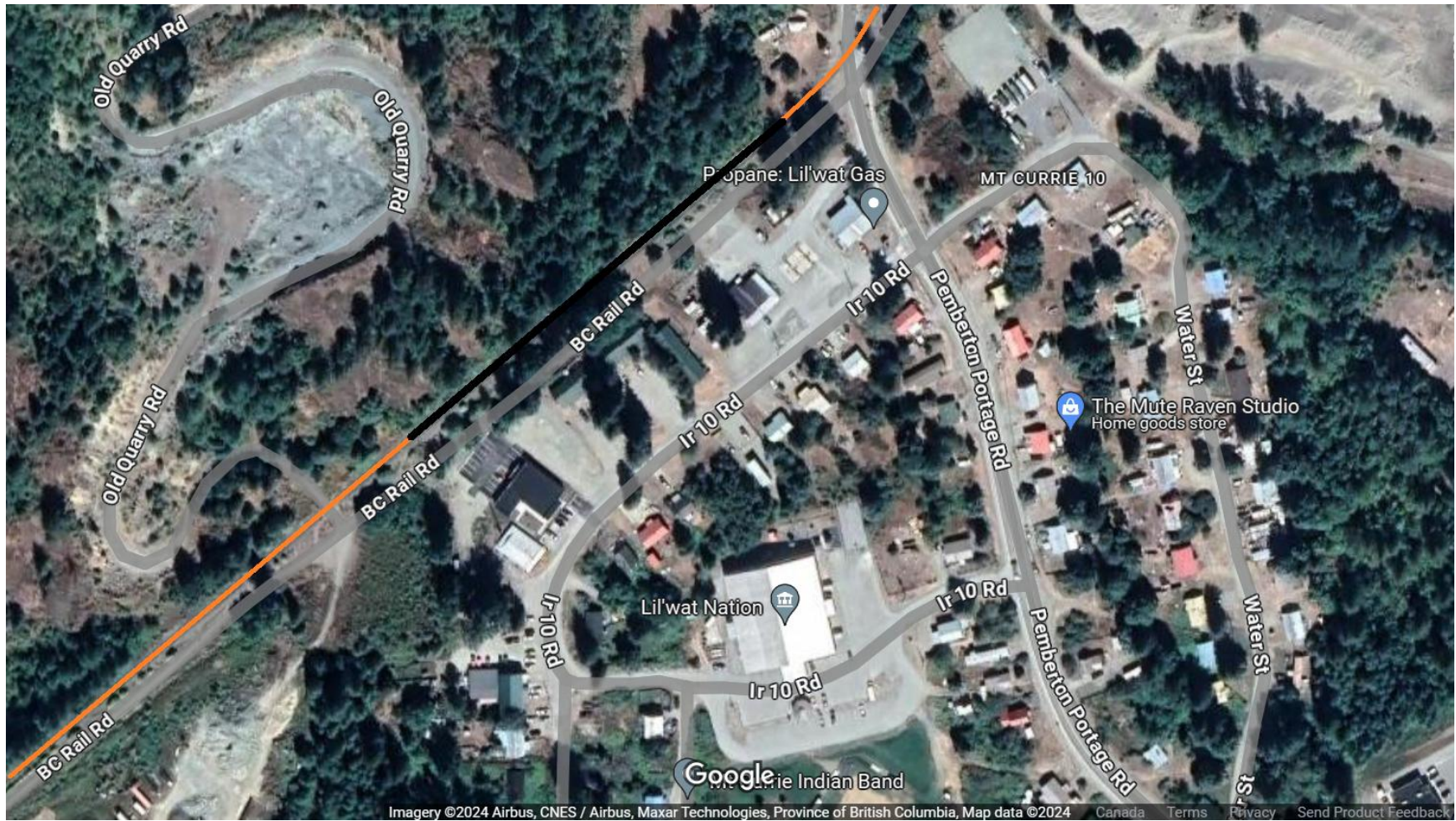
Lions Bay



Britannia Beach



Mt Currie



D'Arcy



Seaton Portage



Squamish, Whistler, Pemberton, and Lillooet

The existing stations would be used with upgraded platforms.

Disclaimer

The author is not a professional planner, consultant, or a member of any group. The options are an idea for a Squamish Lillooet Intercity Rail Line. The calculations are as accurate as possible based on information available online.