

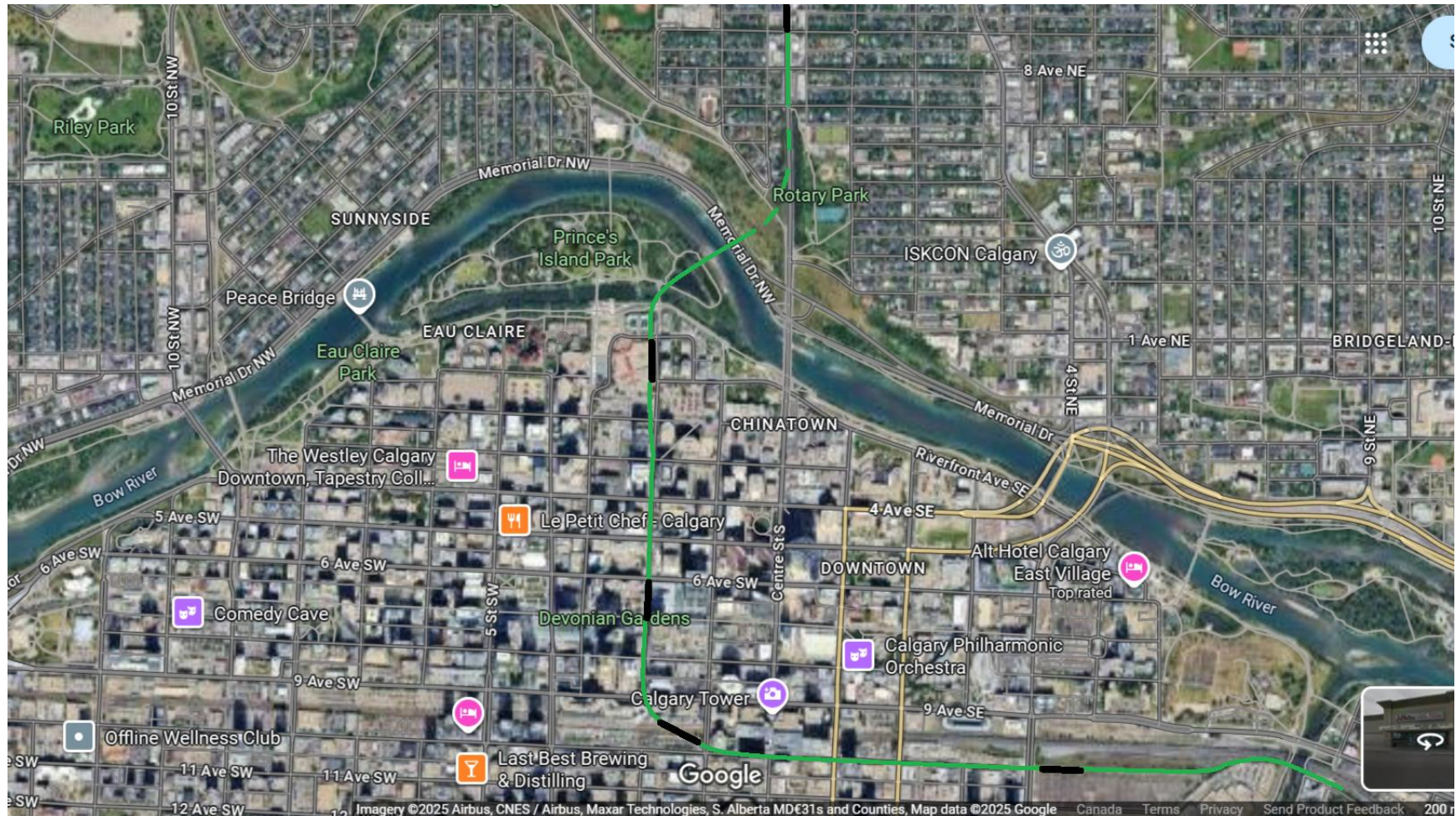
Calgary Green Line Downtown

Written by Gwyer Webber

January 2026

www.railtransit.ca

This idea is for a compact guideway on the Calgary Green Line downtown section with Beltline and Eau Claire stations off street. It may be possible to eliminate the Catenary between Grande Central and Eau Claire by having batteries in the LRV.



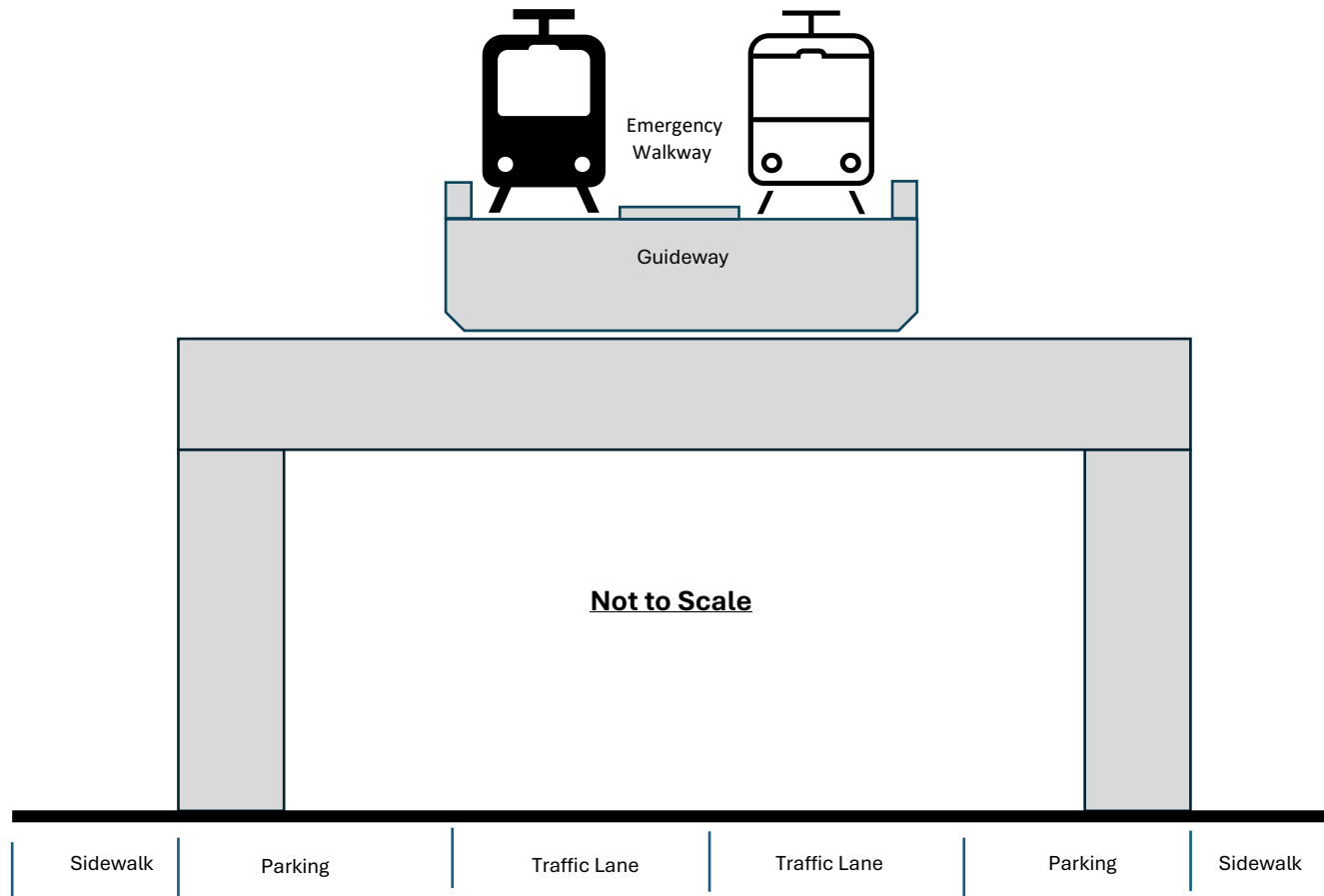
Compact Guideway

- This Google street view shows the Skytrain guideway on top of a cross beam on the Lougheed Hwy.



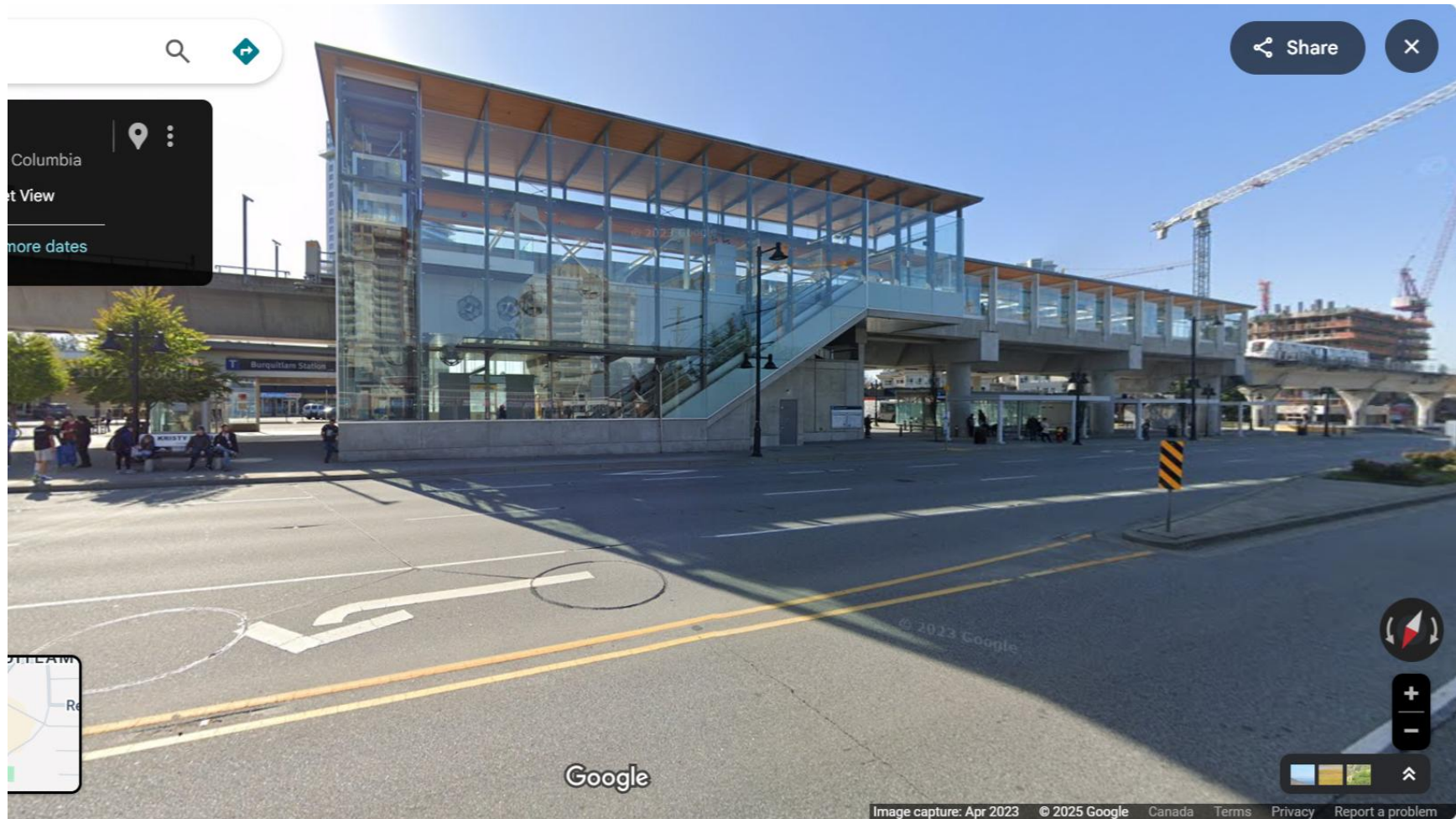
Compact Guideway for 10th Ave and Parts of 2nd St SW

- The support columns are placed in the street parking area, and the guideway can be centred above the road.
- It may be possible not to have overhead catenary between the Grand Central Station and the Eau Claire Station by having batteries in the LRVs.

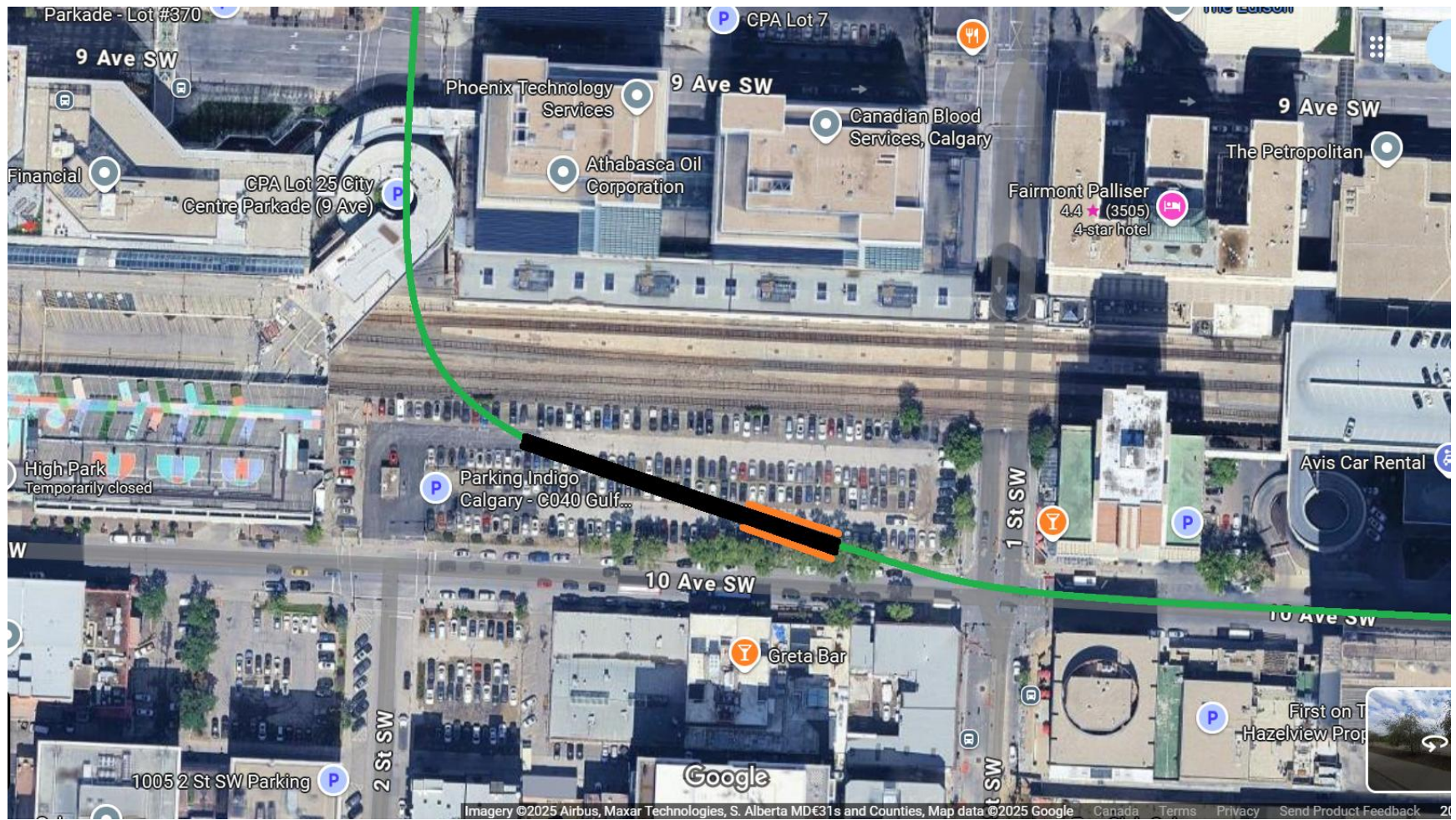


Station Style for Beltline and Eau Claire Stations

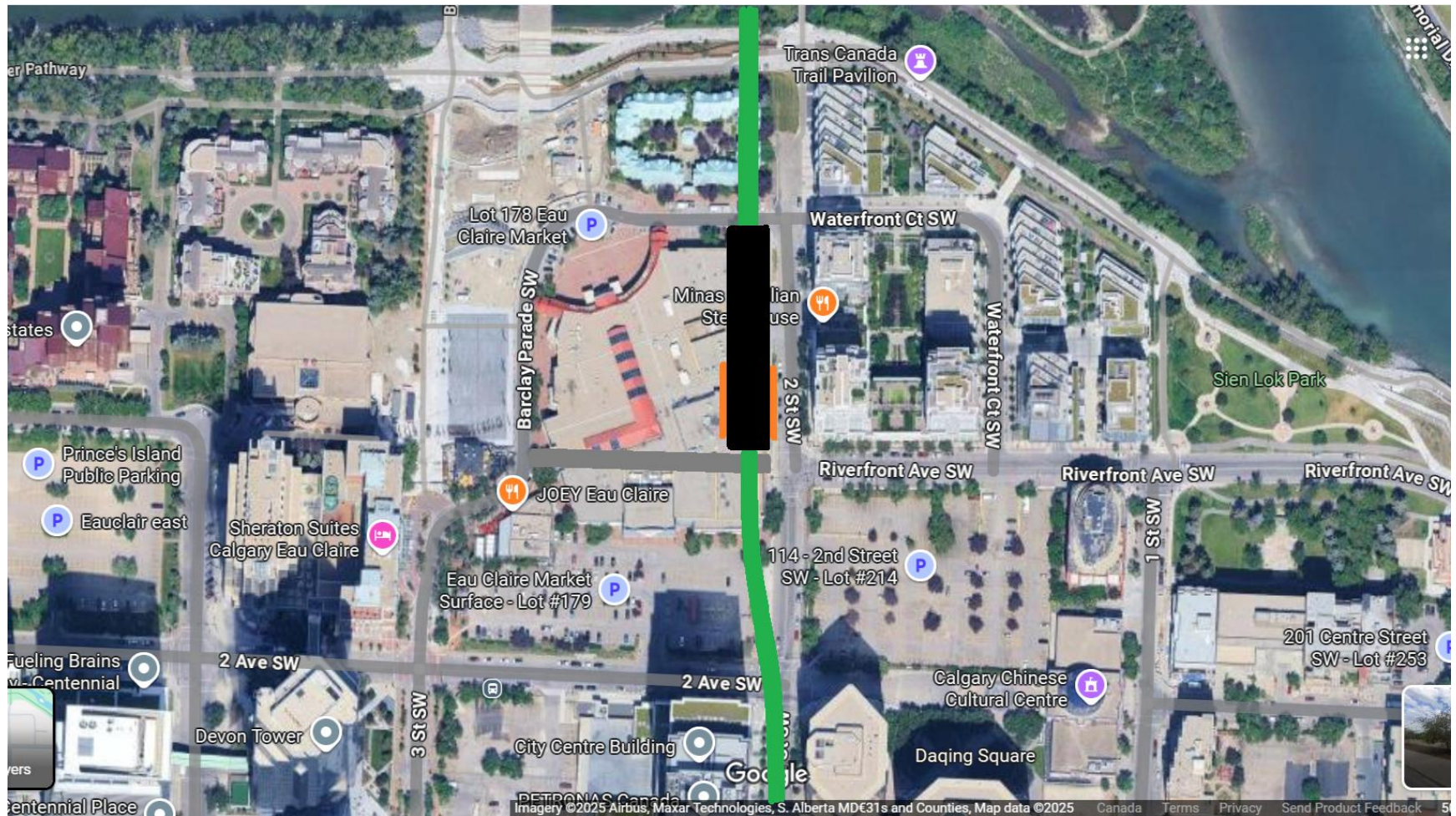
- This is the Burquitlam Station in Metro Vancouver.
- A similar style of station could be built on the existing parking lot at 10th Ave SW and 1 St SW and at Eau Claire.



Beltline Station

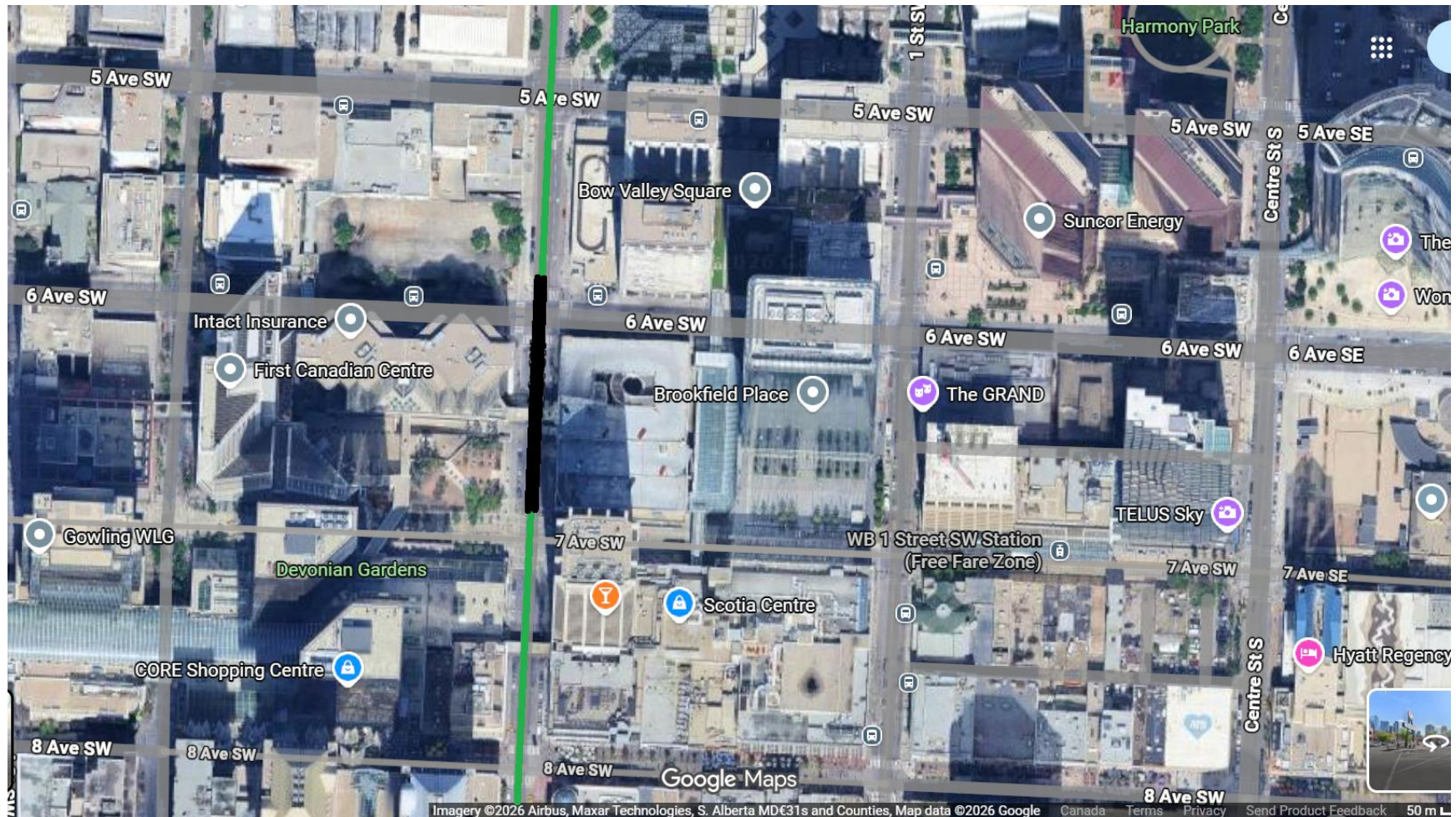


Eau Claire Station Location



Seventh Ave SW Station

- This station would be similar to the proposed Seventh Ave SW station in the AECOM Study and placed between Seventh Ave SW and Sixth Ave SW to increase the distance between the Beltline Station and Seventh Ave SW Station.



Disclaimer: The author is not a professional planner, consultant, or a member of any group. This is an idea for the Calgary Green Line Downtown section. The calculations are as accurate as possible based on information available.