

BUYERS ISSUE

VOL.13

MARCH 2026



BUYERS ISSUE

FEBRUARY - MARCH

2026

BUYER'S ISSUE

In the world of luxury, it's not just about the label. It's about the story, the passion, and the dream.

At BUYERS ISSUE, we elegantly curate the vanguard of luxury fashion talent, presenting them through our meticulously crafted, immersive catalogue.

Embracing a 0% commission model, we commit to providing you a pristine channel to liaise directly with groundbreaking brands—no intermediaries, no ambiguities.

As a discerning buyer, you possess the autonomy to select and place orders, connecting seamlessly with the visionary designers themselves, unburdened by extraneous terms of business.



ISSUE 13
FEATURING:

ALLUNIX
BOLDNSUBTLE
AIRÉNE
CHERRY YOU
LUCÉ

BÜYERS İSSÜE

CHERRY YOU



WEAVING HERITAGE, ELEVATING SOULFUL ELEGANCE

In a world where tradition meets innovation, and personal expression flourishes into quiet strength, CHERRY YOU stands as a guardian of elegance for an introspective era. We are dedicated to the discerning individual—the seeker of meaning, the protector of enduring values, and the true connoisseur of culture.

At CHERRY YOU, we honor the depth of heritage while embracing contemporary precision. We create timeless designs that resonate with those for whom value is measured not only in beauty but in purpose, longevity, and inner clarity.









WHOLESALE PORTAL

CHERRYYOU.COM

ALLUNIX



ALLUNIX is an independent fashion label that explores surrealistic reality. ALL UNITED with the UNKNOWN (X) is the brand's core, striking to unite a society that delves into its subconsciousness.

With tech-savvy and futuristic design language we aim to produce high-quality garments with embroidery and prints. Our goal is to develop designs with edgy silhouettes, focusing on expressing different body parts. Illusion is the brand's keyword, exposed through surrealist embodiment, manifesting the space between past/future.

We intend to smarten up the brand's awareness through sustainability - starting with recycled packaging, certified fabrics, and a friendly working environment. Most of the high-quality materials we use are selected with care for nature. All processes - from production to sale are with attention to every detail to achieve greater social responsibility and graded work labor.









WHOLESALE PORTAL

ALLUNIX.EU

LUCÉ

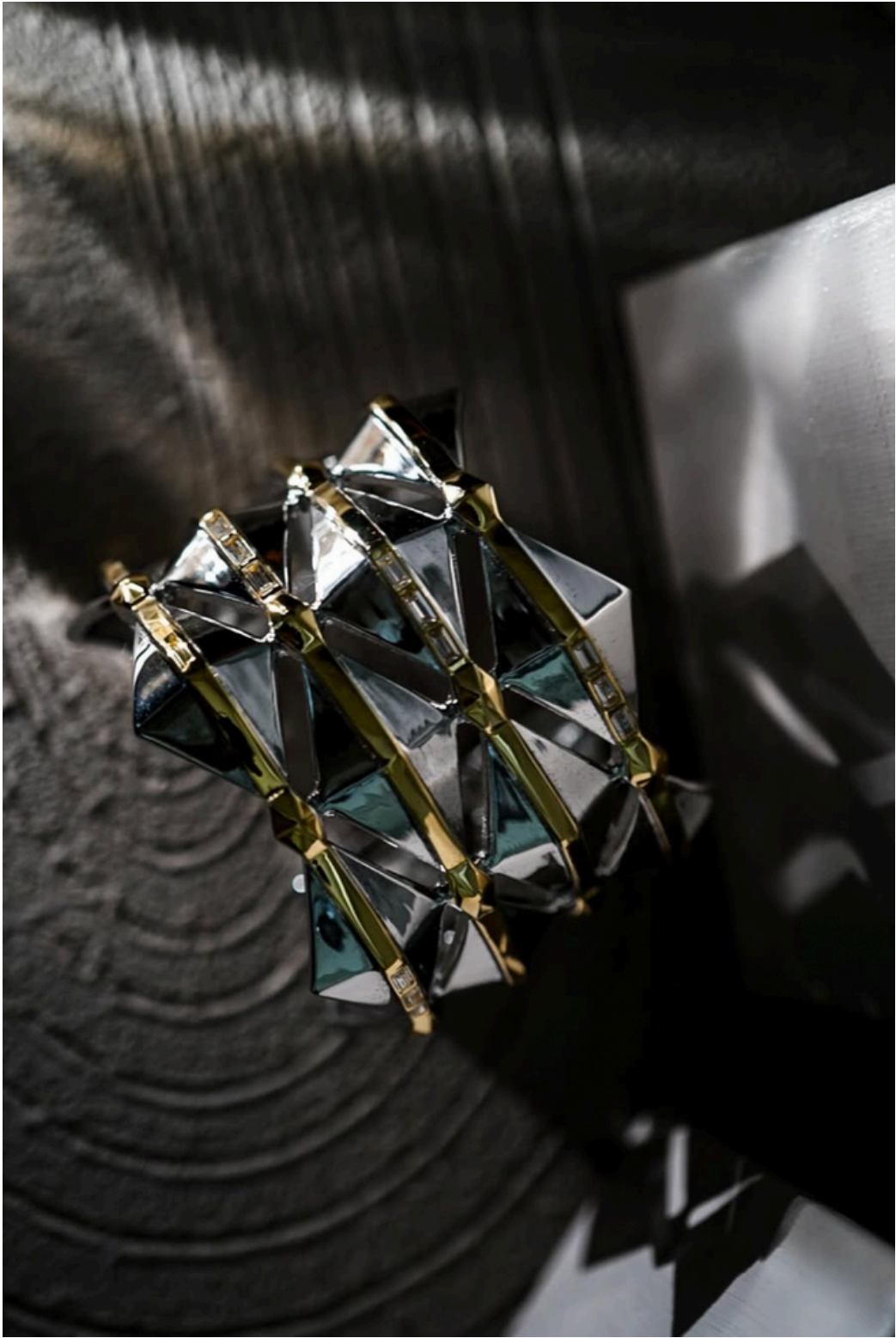


FROM THE VERY HEART OF COPENHAGEN, WHERE TIMELESS ELEGANCE MEETS THE UNWAVERING STRENGTH OF URBAN ARCHITECTURE, OUR STORY BEGAN. LUCÉ WAS BORN FROM THE SHARED VISION OF A HUSBAND AND WIFE DUO, DRIVEN BY AN UNYIELDING PASSION FOR ENDURING FORMS AND METICULOUS DETAIL. WE EMBARKED ON A JOURNEY TO CRAFT PIECES THAT TRANSCEND FLEETING TRENDS, EMBODYING INTELLECTUAL LUXURY AND A PROFOUND APPRECIATION FOR BEAUTY THAT LASTS A LIFETIME.

TODAY, WE ARE THRILLED TO UNVEIL A SIGNIFICANT CHAPTER IN OUR NARRATIVE: A THOUGHTFUL RELAUNCH THAT DEEPENS OUR COMMITMENT TO EXQUISITE ARTISTRY. AT THE CORE OF THIS EVOLUTION LIES OUR RENEWED FOCUS ON LUCÉ FINE JEWELRY. THESE ARE NOT MERELY ADORNMENTS; THEY ARE MONUMENTS TO PERSONAL STYLE, SCULPTED FROM PRECIOUS METALS AND GRACED WITH ETHICALLY SOURCED, LAB-GROWN DIAMONDS THAT MIRROR THE BRILLIANCE OF ARCHITECTURAL PRECISION. EACH PIECE IS A TESTAMENT TO UNPARALLELED CRAFTSMANSHIP, DESIGNED TO BECOME A CHERISHED HEIRLOOM, ECHOING THE STRENGTH AND GRACE OF THE STRUCTURES THAT INSPIRE US.

OUR ETHOS OF CONSCIOUS LUXURY REMAINS UNWAVERING. EVERY DIAMOND IS CULTIVATED WITH INTEGRITY, EVERY CURVE OF GOLD IS THOUGHTFULLY CONSIDERED, ENSURING THAT TRUE LUXURY IS ALWAYS INTERTWINED WITH RESPONSIBILITY AND SUSTAINABILITY. WE INVITE YOU TO EXPLORE THIS REFINED EXPRESSION OF LUCÉ, WHERE EVERY PIECE OF FINE JEWELRY TELLS A STORY OF ENDURING BEAUTY, CONSCIOUS CREATION, AND TIMELESS DESIGN.

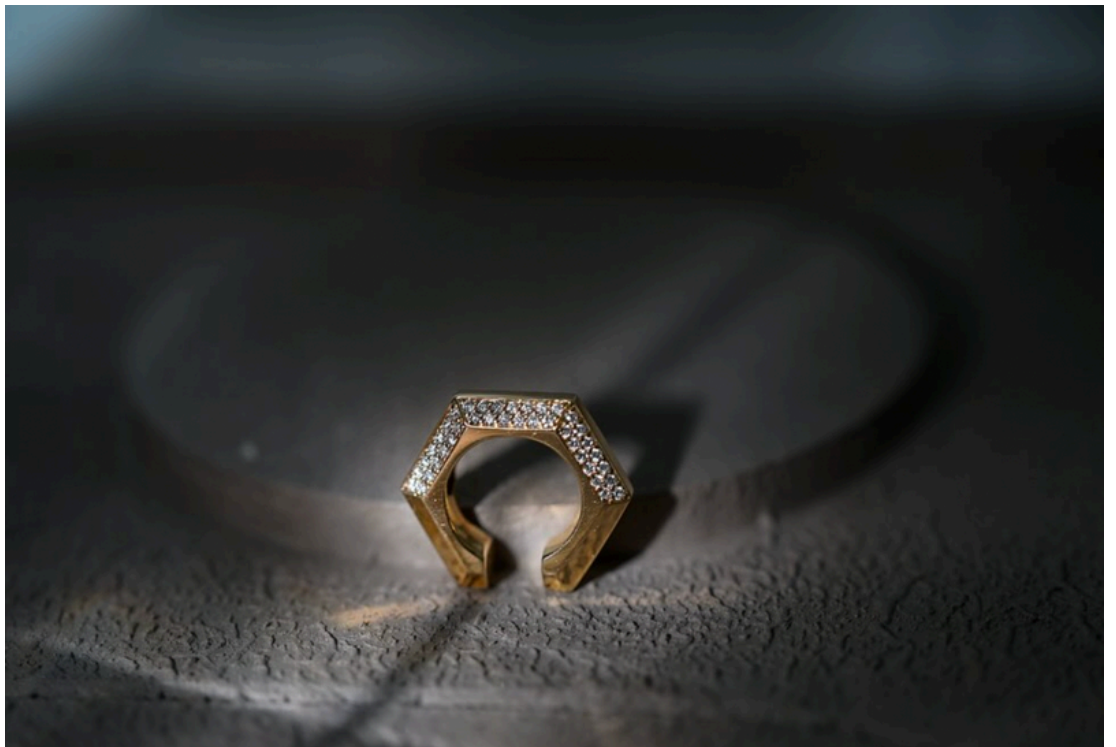




AT LUCÉ, CONSCIOUS LUXURY IS NOT JUST A CONCEPT—IT'S OUR ENDURING ETHOS. WE ARE A SLOW FASHION BRAND, FOUNDED ON A STEADFAST COMMITMENT TO ETHICAL PRACTICES AND MINDFUL MATERIAL SELECTION AT EVERY STEP.

OUR PHILOSOPHY IS SIMPLE: TO CREATE PIECES THAT ARE NOT ONLY BEAUTIFUL BUT ALSO RESPONSIBLY MADE, DESIGNED TO BE CHERISHED FOR A LIFETIME. THIS COMMITMENT EXTENDS TO EVERY FACET OF OUR CREATION, FROM UTILIZING ETHICALLY SOURCED LAB-GROWN DIAMONDS TO INCORPORATING RECYCLED SILVER.

FOR US, TRUE LUXURY IS ALWAYS INTERTWINED WITH INTEGRITY AND SUSTAINABILITY, ENSURING THAT EVERY LUCÉ PIECE REFLECTS A PROFOUND RESPECT FOR BOTH ARTISTRY AND THE WORLD WE LIVE IN.







WHOLESALE PORTAL

luce-it.com

BOLDNSUBTLE

BOLDNSUBTLE WAS BORN FROM A SINGULAR,
QUIET REBELLION: THE BELIEF THAT THE RITUAL
OF DRESSING SHOULD BE AN ACT OF LIBERATION,
NOT A COMPLICATION.

WE UNDERSTAND THAT MODERN ELEGANCE ISN'T
FOUND IN THE ORNATE, BUT IN THE EFFORTLESS.
IT IS THE GRACE OF A GARMENT THAT SIMPLY
WORKS - PIECES CRAFTED WITH A PRECISION
THAT HONOURS THE SILHOUETTE, A RESILIENCE
THAT DEFIES THE SEASONS, AND AN AESTHETIC
THAT COMMANDS ATTENTION WITHOUT
DEMANDING IT.





ONE WOMAN. EVERY HOUR.

THE WOMAN WHO GREETES THE DAWN AT 10:00 AM IS THE SAME SOUL WHO EMBRACES THE MOONLIGHT AT 10:00 PM. SHE DOES NOT PERFORM; SHE DOES NOT PIVOT BETWEEN PERSONAS. SHE IS A SINGULAR FORCE LIVING A MULTIFACETED LIFE, AND SHE REQUIRES A WARDROBE THAT MOVES AT THE SPEED OF HER AMBITION.

WE DO NOT DESIGN FOR "VERSIONS" OF YOU. WE DESIGN FOR THE WHOLE OF YOU.

ENDURING GRACE

WE SELECT FABRICS NOT JUST FOR THEIR BEAUTY, BUT FOR THEIR MEMORY. THESE ARE TEXTILES CHOSEN FOR HOW THEY HOLD A LINE, HOW THEY RESPOND TO MOVEMENT, AND HOW THEY RESIST THE FATIGUE OF TIME.

THESE ARE NOT GARMENTS FOR A SEASON; THEY ARE COMPANIONS FOR A LIFETIME. ARCHITECTURE YOU CAN WEAR. QUALITY YOU CAN TRUST. LUXURY THAT MOVES WITH YOU.





WHOLESALE PORTAL

BOLDNSUBTLE.COM

AIRÈNE



AIRÈNE

AT AIRÈNE, WE BELIEVE CLOTHING IS MORE THAN WHAT YOU WEAR — IT IS A QUIET LANGUAGE OF ELEGANCE, INTENTION, AND SELF-EXPRESSION.

OUR COLLECTIONS ARE BORN FROM A COMMITMENT TO BEAUTY WITH PURPOSE. EACH PIECE IS CRAFTED USING CAREFULLY SOURCED DEADSTOCK FABRICS — RARE, LIMITED, AND OFTEN THE LAST OF THEIR KIND. BY REIMAGINING WHAT ALREADY EXISTS, WE HONOR BOTH CRAFTSMANSHIP AND THE PLANET, CREATING GARMENTS THAT FEEL TIMELESS RATHER THAN TIED TO PASSING TRENDS.



A black and white fashion advertisement. A woman with long, wavy hair is the central figure. She is wearing a black, short-sleeved, button-up crop top and a black, high-waisted skirt. Her hands are raised behind her head, and she has a serene expression. The background is a plain, light-colored wall. The word "AIRÈNE" is printed in a large, white, serif font across the center of the image, partially overlapping the woman's top. The lighting is dramatic, creating strong shadows on the wall behind her.

AIRÈNE

AIRÈNE WAS FOUNDED WITH THE VISION OF A MODERN WARDROBE THAT IS GRACEFUL, FEMININE, AND SUSTAINABLE. EVERY SILHOUETTE IS DESIGNED TO CELEBRATE THE WEARER: FLUID, CONFIDENT, AND UNDERSTATEDLY POWERFUL.

INSPIRATION FLOWS FROM MANY SOURCES, BUT ONE OF THE MOST MEANINGFUL IS MY DAUGHTER, IRENE. HER CURIOSITY, INNOCENCE, AND JOY REMIND ME DAILY OF THE BEAUTY IN SIMPLICITY AND THE IMPORTANCE OF CREATING A WORLD — AND WARDROBE — THAT IS THOUGHTFUL, LASTING, AND FULL OF CARE.

WE CREATE IN LIMITED QUANTITIES, NOT ONLY TO PRESERVE EXCLUSIVITY, BUT TO ENSURE EACH GARMENT CARRIES INTENTION. NO EXCESS, NO WASTE — ONLY MEANINGFUL DESIGN.

AIRÈNE IS FOR THOSE WHO BELIEVE THAT LUXURY IS NOT ABUNDANCE, BUT REFINEMENT. THAT TRUE STYLE IS NOT FAST, BUT LASTING. AND THAT FASHION, AT ITS MOST BEAUTIFUL, CAN BE BOTH ARTFUL AND RESPONSIBLE.

AIRÈNE IS NOT JUST CLOTHING — IT IS A WAY OF BEING. FEMININE. CONSCIOUS. ETERNAL.



WHOLESALE PORTAL

AIRENELABEL.COM

BÜYERS İSSÜE