

Product Catalog

for  **biolabs** for ADVANCED
THERAPEUTICS
philadelphia

**Special Offer
BioLabs Members**

**6
2
0
2**



We are a team of world class experts who have pioneered innovation in bioengineering and regenerative medicine for the past 30 years.

“We are driven by a commitment to improving human health. Years ago no one else believed that 3D human tissue models would become indispensable to medicine. **CTIBIOTECH™** were the first to make that vision a reality”

-Pr. Colin McGuckin from **CTIBIOTECH™ & CTIBIOTECH USA™**

OUR 3 POLES OF EXCELLENCE

At CTIBIOTECH USA™, we place science and innovation at the service of medical progress.

Our centers of excellence are built on high-quality, ethically sourced human cells and tissues, providing reliable and predictive solutions tailored to the needs of research and development.



Ethically sourced human tissues, cells, and biological samples provide a reliable foundation for cutting-edge research and innovation.



Advanced predictive human cell bioassays for skin enable faster and more reliable preclinical testing, optimizing both time and cost efficiency.



High-quality human cells designed to optimize scientific research and accelerate biomedical innovation. Ideal for the development of new therapies and biotechnological applications.

HOW CAN WE HELP YOU?

We can work with you on several levels according to your requirements. The main partnership options are:

Outsourcing

Don't have your own lab, or specialist equipment? Contact us if you want to outsource some of your R&D to us. With access to CTIBIOSOURCING™ and highly trained researchers, we can help!

Collaborative Research

We are always motivated by new challenges and joint research. Contact us so that we can help you with yours!

Contract Testing

We work with well known multinationals and institutions (hospitals, clinics and universities) on proprietary projects where confidentiality is essential.

Consulting

Our problem solving experience and expertise can be shared on a project-by-project basis.

Table of contents

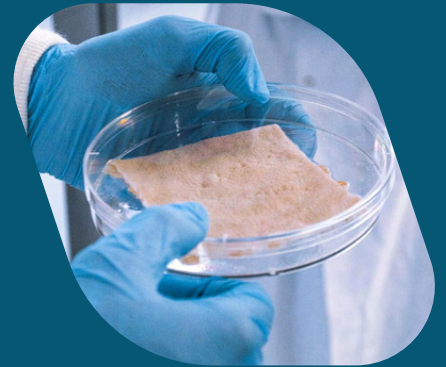
Skin	4-5
Skin cells	6-7
<i>Ex vivo</i> kits	8-9
Babyskin kits	10-11
Hair & adipose tissues	12-13
Blood	14-15
Blood cells	16-17
Stem cells	18-19
Cancer cells	20-21
Growth medium	22-23
Custom requests	24-25
CTISKIN services	26
CTIPHARMA services	27

Human Skin Tissues for Research

CTIBIOTECH USA™ provides human skin tissues exclusively for research purposes, in full compliance with regulations.

Thanks to our extensive network and biosourcing expertise, we ensure a supply of fresh skin from various body locations.

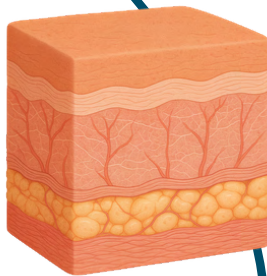
Our team carefully selects both male and female donors, offering a wide range of characteristics to meet the specific needs of each research project. We also provide worldwide delivery to support researchers across the globe.



/© CTIBIOTECH™, Skin



- Adult human Skin, Full Thickness (with or without adipose tissue)
- Aged human Skin, Full Thickness (with or without adipose tissue)
- Juvenile human Skin, Full Thickness
- Dermatomed Skin (without the dermis)



Fresh or Flash frozen

Adult & Aged :

- Skin Disc 2mm to 40 mm
- Skin square 1cm² / 200cm²

Juvenile :

- Skin Disc 2mm to 8mm
- Whole foreskin

FFPE & OCT



- Access a complete range of skin phototypes from the lightest to the darkest



- Human skin samples from male ♂ and female ♀ donors
- Body zones : abdominal, arms, thighs, face, eyelids, adipose tissues

USD Catalogue Products Price List

Adult Human Dermatomed skin						
Cat N°C	Description	Additional information	Size	Unit	Price	Discount
1225200400			12-25	cm ²	\$ 697	-15%
2550200400		Thickness : 200-400µm	25-50	cm ²	\$ 911	-15%
50100200400			50-100	cm ²	\$ 1 342	-15%
100200200400	Adult Human Dermatomed		100-200	cm ²	\$ 1 773	-15%
1225400700	skin		12-25	cm ²	\$ 480	-15%
2550400700		Thickness : 400-700µm	25-50	cm ²	\$ 624	-15%
50100400700			50-100	cm ²	\$ 911	-15%
100200400700			100-200	cm ²	\$ 1 342	-15%

Adult Human Skin, Full Thickness						
Cat N°C	Description	Additional information	Size	Unit	Price	Discount
CTISD.1.5		With Fat, FRESH	5	mm Ø	\$ 41	-25%
CTISD.1.9			8	mm Ø	\$ 52	-25%
CTISD.1.13			10	mm Ø	\$ 63	-25%
CTISD.1.15			12	mm Ø	\$ 73	-25%
CTISD.1.16			15	mm Ø	\$ 82	-25%
CTISD.1.20			25	mm Ø	\$ 103	-25%
CTISD.1.6	SKIN DISCS	Without Fat, FLASH FROZEN	5	mm Ø	\$ 41	-25%
CTISD.1.10			8	mm Ø	\$ 52	-25%
CTISD.1.14			10	mm Ø	\$ 63	-25%
CTISD.1.15.1			12	mm Ø	\$ 73	-25%
CTISD.1.17			15	mm Ø	\$ 82	-25%
CTISD.1.20.1			25	mm Ø	\$ 103	-25%
CTISB.1.13		With Fat, FRESH	1	cm ²	\$ 73	-25%
CTISB.1.3			10	cm ²	\$ 144	-25%
CTISB.1.15			25	cm ²	\$ 287	-25%
CTISB.1.5			50	cm ²	\$ 431	-25%
CTISB.1.7			100	cm ²	\$ 789	-25%
CTISB.1.17			150	cm ²	\$ 1 220	-25%
CTISB.1.9	SKIN SQUARES	Without Fat, FLASH FROZEN	200	cm ²	\$ 1 793	-25%
CTISB.1.14			1	cm ²	\$ 73	-25%
CTISB.1.4			10	cm ²	\$ 144	-25%
CTISB.1.16			25	cm ²	\$ 287	-25%
CTISB.1.6			50	cm ²	\$ 431	-25%
CTISB.1.8			100	cm ²	\$ 789	-25%
CTISB.1.18		150	cm ²	\$ 1 220	-25%	
CTISB.1.10		200	cm ²	\$ 1 793	-25%	

JUVENILE Human Skin, Full Thickness						
Cat N°C	Description	Additional information	Size	Unit	Price	Discount
CTISB.1.11	Skin Full Thickness	Whole tissue, FRESH	1	piece	\$ 533	-15%
CTISB.1.12	Skin Full Thickness	Whole tissue, FLASH FROZEN	1	piece	\$ 533	-15%

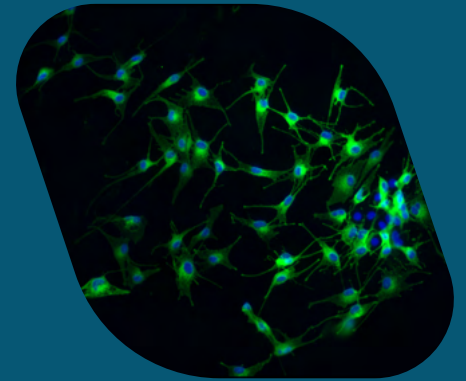
Human Skin Blocks, Full Thickness						
Cat N°C	Description	Additional information	Size	Unit	Price	Discount
CTIFFPE.1.1	Skin Blocks Full Thickness	FFPE, 0,25cm ² to 1cm ² (RT)	1	block	\$ 324	-25%
CTIOCT.1.1	Skin Blocks Full Thickness	OCT, 0,25cm ² to 1cm ²	1	block	\$ 377	-25%

Condition of		
Category	Storage temp	Shipping temp
Room Temp (RT)	RT	RT
Fresh	use fresh	4°C
Frozen	-20°C or lower	-80°C or lower

Primary Human Skin Cells

The Skin Cells offered by CTIBIOTECH USA™ are derived from ethically and securely sourced human skin.

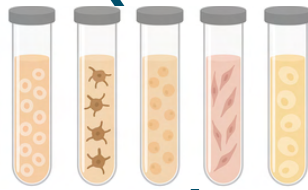
They are cultured and prepared in our laboratories to provide a reliable and high-performance material, suitable for the development of treatments, skincare products, or *in vitro* studies. Used either alone or integrated into more complex skin models, these cells help to better understand skin mechanisms, test active substances, and simulate pathologies. Readily available and delivered with personalized scientific support, they represent a key solution for innovation in healthcare and dermo-cosmetics.



/© CTIBIOTECH™, Melanocytes



- Juvenile human Skin
- Adult human Skin
- Aged human Skin



Juvenile, Adult & Aged

- 1.10⁶ cells
- Fibroblasts, Keratinocytes, Melanocytes, Sebocytes, Adipocytes



Cryopreserved



- Access a complete range of skin phototypes from the lightest to the darkest



- Human skin samples from male ♂ and female ♀ donors

Select the growth medium adapted to the chosen cell type in the Growth Medium section on pages 22–23

USD Catalogue Products Price List

Skin Cells (Frozen)						
Cat N°C	Description	Additional information	Size	Unit	Price	Discount
CTICC1.1.1	Human Dermal Fibroblasts	Adult, FROZEN	1.10 ⁶	cells	\$ 425	-25%
CTICC1.1.2		Neonatal, FROZEN	1.10 ⁶	cells	\$ 476	-25%
CTICC1.1.3		Juvenile, FROZEN	1.10 ⁶	cells	\$ 493	-25%
CTICC1.1.4		Aged, FROZEN	1.10 ⁶	cells	\$ 514	-25%
CTICC1.2.1	Human Epidermal Keratinocytes	Adult, FROZEN	1.10 ⁶	cells	\$ 595	-25%
CTICC1.2.3		Juvenile, FROZEN	1.10 ⁶	cells	\$ 638	-25%
CTICC1.2.4		Aged, FROZEN	1.10 ⁶	cells	\$ 659	-25%
CTICC1.3.1	Human Melanocytes	Adult, FROZEN	1.10 ⁶	cells	\$ 723	-25%
CTICC1.3.3		Juvenile, FROZEN	1.10 ⁶	cells	\$ 723	-25%
CTICC1.3.4		Aged, FROZEN	1.10 ⁶	cells	\$ 723	-25%
CTICC1.4.1	Human Sebocytes	FROZEN	1.10 ⁶	cells	\$ 850	-25%

CTISKIN™ Single Donor Kit						
Cat N°C	Description	Additional information	Size	Unit	Price	Discount
The kit includes:						
- 1 vial of 1.10 ⁶ cells of Each cell type (FROZEN)						
- 1 bottle of 500mL growth medium for Each cell type (FRESH)						
CTI.SDK.2	CTISKIN™ Single Donor Kit Up to 6 cell types from the same donor	CTISkin® Single Donor Kit - 2 CELL TYPES	2	cell types	\$ 1 275	-25%
CTI.SDK.3		CTISkin® Single Donor Kit - 3 CELL TYPES	3	cell types	\$ 2 125	-25%
CTI.SDK.4		CTISkin® Single Donor Kit - 4 CELL TYPES	4	cell types	\$ 2 805	-25%
CTI.SDK.5		CTISkin® Single Donor Kit - 5 CELL TYPES	5	cell types	\$ 3 485	-25%
CTI.SDK.6		CTISkin® Single Donor Kit - 6 CELL TYPES	6	cell types	\$ 4 165	-25%

Condition of		
Category	Storage temp	Shipping temp
Fresh	use fresh	4°C
Frozen	-175°C or lower	-80°C or lower

“The Ex vivo kit from CTISkin is a standardised and ready to use solution for your efficacy and safety tests. Collected just after the surgical intervention, we provide you with the freshest possible skin biopsies. According to the declaration of Helsinki, all skin samples are collected with donors informed consent and tested for HIV, HCV and HBC to ensure a negative serotyping. Provided with adapted culture medium, those biopsies can be used up to 11 days after the surgical resection. We can provide you regularly with fresh Ex Vivo skin.



Turnkey Solution For Preclinical Testing

Including



Insert for transport



CTISKIN® Reagent in 250-125-60 mL

_Features

Weekly supply for recurrent testing projects Customizable: Select your donor inclusion criteria*

- Localisation
- Phototype
- Age group
- Gender

*production lead time may apply

_Suitable for:

Anti-pollution assay

Moisturizing assay

Revitalizing assay

Wound healing assay

Solar protection assay

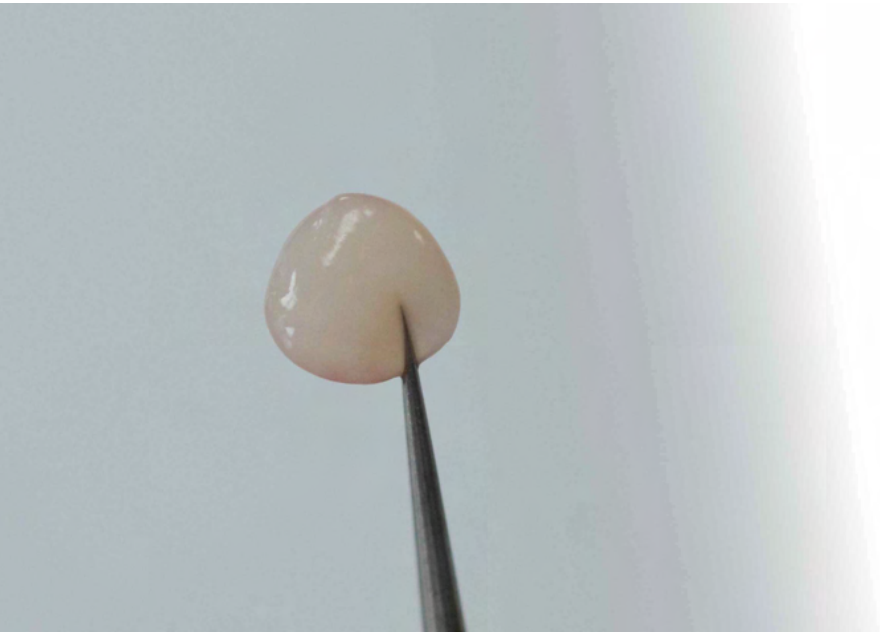
Anti-inflammatory assay

USD Catalogue Products Price List

CTISKIN Ex Vivo kit						
Cat N°C	Description	Additional information	Size	Unit	Price	Discount
The kit includes:						
- X plate of 24 biopsies (12mm Ø) of Adult Human Skin, Full Thickness, FRESH, Skin Disc						
- Y mL of CTISkin® Ex Vivo Reagent for tissue culture						
CTIEXVK.1.1	CTISkin® Ex vivo Kit	1 plate & 60 mL of reagent	1	Plate	\$ 2 040	-15%
CTIEXVK.1.2		2 plates & 120 mL of reagent	2	Plate	\$ 3 868	-15%
CTIEXVK.1.3		3 plates & 180 mL of reagent	3	Plate	\$ 5 695	-15%
CTIEXVK.1.4		4 plates & 240 mL of reagent	4	Plate	\$ 7 480	-15%
CTIEXVK.1.5		5 plates & 300 mL of reagent	5	Plate	\$ 9 350	-15%
CTIGM.ExVivo.0 60.Kit	Growth Medium for Ex Vivo Skin Tissue Culture Valid only if purchased with a Kit		60	mL	\$ 71	-25%
CTIGM.ExVivo.1 25.Kit	Growth Medium for Ex Vivo Skin Tissue Culture Valid only if purchased with a Kit		125	mL	\$ 106	-25%
CTIGM.ExVivo.2 50.Kit	Growth Medium for Ex Vivo Skin Tissue Culture Valid only if purchased with a Kit		250	mL	\$ 176	-25%
CTIGM.ExVivo.0 60.Single	Growth medium for Ex Vivo Skin Tissue Culture, single		60	mL	\$ 299	-25%
CTIGM.ExVivo.1 25.Single	Growth medium for Ex Vivo Skin Tissue Culture, single		125	mL	\$ 398	-25%
CTIGM.ExVivo.2 50.Single	Growth medium for Ex Vivo Skin Tissue Culture, single		250	mL	\$ 596	-25%

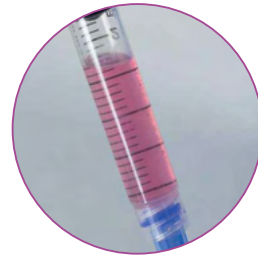
Condition of		
Category	Storage temp	Shipping temp
Fresh	use fresh	4°C

“ The product CTIBabyskin Kit™ from CTIBIOTECH™ contains an advanced solution to allow you to carry out your tests on fresh ex vivo Human biopsies. The Baby Skin model is a new advanced procedure, taking tissue from newborn babies, that is normally thrown away. It is a highly sensitive model appropriate for testing of everything coming into contact with baby skin : creams, cleansers, wipes, food, clothes. Supplied fresh with culture media created by CTIBIOTECH™, this product allows you to have access to a study model as close as possible to *in vivo* conditions. The original tissues have been obtained after informed consent of patients under the provisions required by US Law.



Turnkey Solution For Preclinical Testing

Including



Gel for transport



CTIBABYSKIN®
Reagent

250mL of Medium A
125mL of Medium B
250mL of Medium C

_Features

Weekly supply for recurrent testing projects.

_Lead time

3 weeks average at order reception.

_Suitable for testing :

Baby Shampoo & Soap

Solar protection

Clothes

Baby Wipes

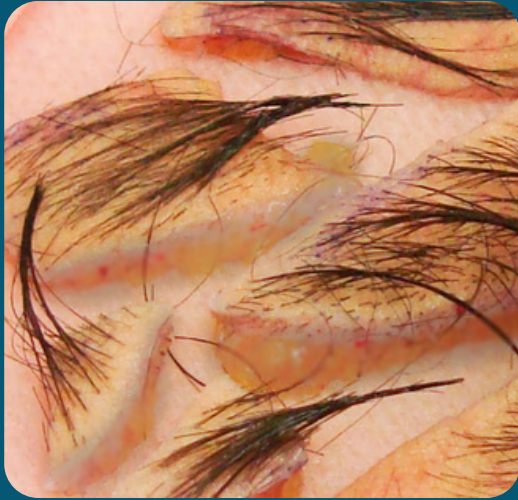
Baby cream

Food

USD Catalogue Products Price List

Babyskin						
Cat N°C	Description	Additional information	Size	Unit	Price	Discount
The kit includes: - Plates containing X biopsies of CTIBABYSKIN® - 250mL of CTIBABYSKIN® MEDIUM A - 125mL of CTIBABYSKIN® MEDIUM B - 250mL of CTIBABYSKIN® MEDIUM C						
CTIBBSKIN.6	CTIBABY SKIN® Kit	6 Biopsies	6	Biopsies	\$ 1 331	-15%
CTIBBSKIN.9		9 Biopsies	9	Biopsies	\$ 1 734	-15%
CTIBBSKIN.12		12 Biopsies	12	Biopsies	\$ 2 093	-15%
CTIBBSKIN.15		15 Biopsies	15	Biopsies	\$ 2 382	-15%
CTIBBSKINFFPE.D0	BABYSKIN blocks	CTIBABYSKIN® at D0, FFPE block	1	block	\$ 307	-25%
CTIBBSKINFFPE.D30		CTIBABYSKIN® at D30, FFPE block	1	block	\$ 482	-25%
CTIBBSKINOCT.D0		CTIBABYSKIN® at D0, OCT block	1	block	\$ 368	-25%
CTIBBSKINOCT.D30		CTIBABYSKIN® at D30, OCT block	1	block	\$ 552	-25%
CTIBBSKINFF.D0		CTIBABYSKIN® at D0, Flash Frozen	1	block	\$ 167	-25%
CTIBBSKINFF.D30		CTIBABYSKIN® at D30, Flash Frozen	1	block	\$ 246	-25%

Condition of		
Category	Storage temp	Shipping temp
Fresh	use fresh	4°C

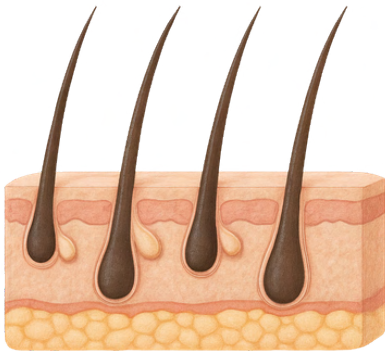


Human hair, for your *in vitro* tests

CTIBIOTECH USA™ offers human scalp models incorporating hair follicles, isolated sebaceous glands, and individual hairs, developed in our laboratories from bio-sourced human tissue. These models are designed to meet the needs of the dermocosmetic, pharmaceutical, and academic sectors. Our models offer a relevant alternative to traditional tests, with better biological representativeness and high adaptability to your research or development projects.

© CTIBIOTECH™, Hair Model

Human scalp with hair follicles



Fresh or Flash frozen

Human hair follicles (1 hair follicle)



Fresh

Human Sebaceous gland



Fresh

Why Choose Us ?



Recognized expertise



Preparation in our equipped laboratories



Solutions adapted to your hair applications



A commitment to ethics and traceability

USD Catalogue Products Price List

Hairs & Adipose Tissues						
Cat N°C	Description	Additional information	Size	Unit	Price	Discount
CTISH.1.1	Scalp with Hair Follicles	FRESH	4	cm ²	\$ 1 664	-15%
CTIHF.1.1	Hair Follicles	FRESH minimum order of 15 units	1	Hair Follicles	\$ 570	-15%
CTISG.1.1	Sebaceous Gland	FRESH minimum order of 15 units	1	Gland	\$ 526	-15%
CTISB.1.19	Human Eyelid	FRESH	1	piece	\$ 540	-25%
CTISH.1.2	Scalp with Hair follicles	FROZEN	4	cm ²	\$ 1 751	-15%
CTIHF.1.2	Hair follicles	FROZEN minimum order of 15 units	1	Hair follicles	\$ 570	-15%
CTISG.1.2	Sebaceous Gland	FROZEN minimum order of 15 units	1	Gland	\$ 526	-15%
CTISB.1.20	Human Eyelid	FROZEN	1	piece	\$ 412	-25%
CTICC1.10		Pre-Adipocytes	1.106	cells	\$ 447	-25%
CTIAT.1.2			1	g	\$ 90	-25%
CTIAT.1.4		FRESH	10	g	\$ 179	-25%
CTIAT.1.6			100	g	\$ 357	-25%
CTIAT.1.8	Human Subcutaneous		1000	g	\$ 707	-25%
CTIAT.1.1	Adipose Tissue		1	g	\$ 97	-25%
CTIAT.1.3		FROZEN	10	g	\$ 194	-25%
CTIAT.1.5			100	g	\$ 670	-25%
CTIAT.1.7			1000	g	\$ 767	-25%

Condition of		
Category	Storage temp	Shipping temp
Fresh	use fresh	4°C
Frozen	-175°C or lower	-80°C or lower

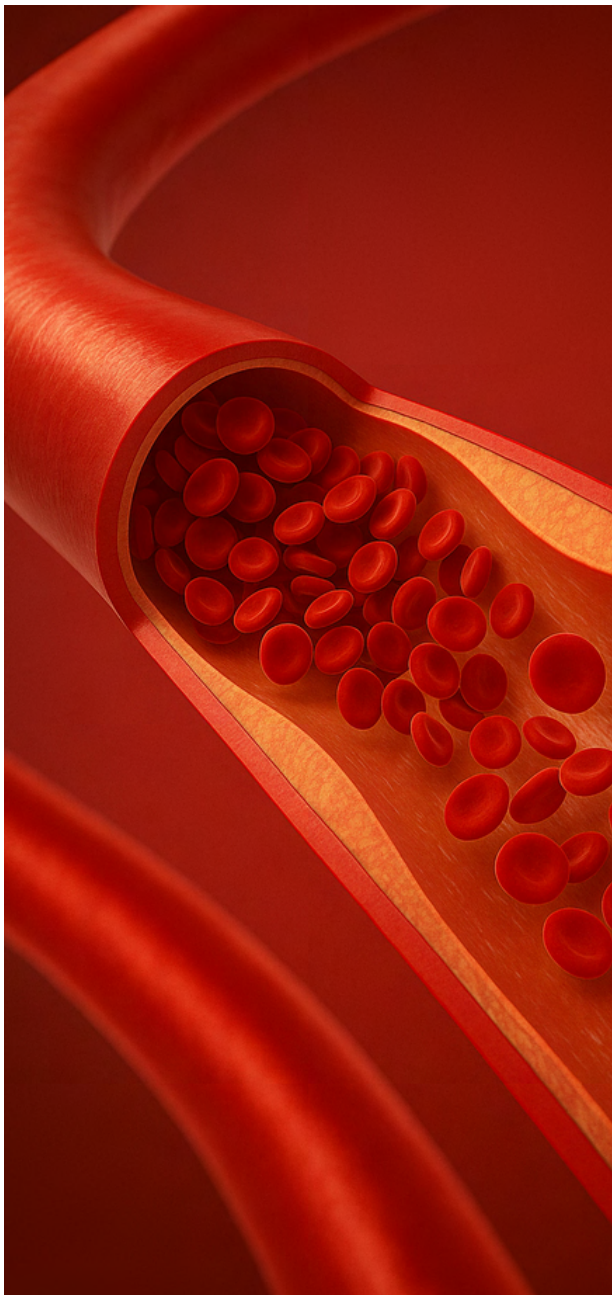
Human Blood: A Vital Resource for Innovative Research

Much more than a vital fluid, human blood is a valuable biological resource for research and innovation in healthcare.

At CTIBIOTECH USA™, we offer rigorously selected and prepared samples of umbilical cord blood and adult peripheral blood to support laboratories working in immunology, oncology, cell therapy, and personalized medicine.



/© CTIBIOTECH™, Blood



/© CTIBIOTECH™, Blood

Peripheral Blood

Origin: voluntary adult donors, in partnership with certified centers.

- HIV, HCV, HBV tested

Anticoagulant

- CPD
- K2EDTA
- K3EDTA
- ACD
- CITRATE
- NaHep

Blood derivatives

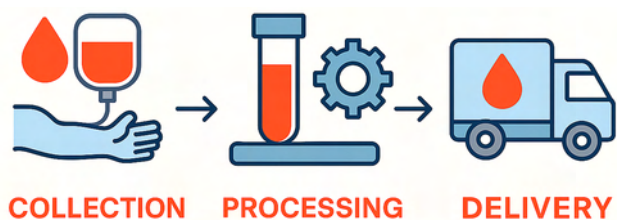
- Leuko-Platelets bag
- Whole peripheral blood Collect/Ship same day
- Peripheral blood serum / Pooled donors
- Peripheral blood plasma / Pooled donors
- Peripheral blood Buffy coat
- Peripheral blood Buffy coat on CPD

Cord Blood

Origin: collected at birth (umbilical cord).

- HIV, HCV, HBV tested

- Whole cord blood on K2EDTA fresh or frozen : tube
- Whole cord blood Collect/Ship same day
- Cord blood serum / Pooled donors
- Cord blood serum plasma / Pooled donors



USD Catalogue Products Price List

Blood						
Cat N°C	Description	Additional information	Size	Unit	Price	Discount
CTITEST.1	HIV, HCV, HBV testing				\$ 81	-15%
CTIPB.1.5	Human Adult Peripheral Blood (PB)	Whole PB on CPD, bag	400-500	mL	\$ 438	-25%
CTIPB.1.21		Whole PB on K2EDTA, vial	±10	mL	\$ 188	-25%
CTIPB.1.22		Whole PB on K3EDTA, vial	±10	mL	\$ 188	-25%
CTIPB.1.23		Whole PB on ACD, vial	±10	mL	\$ 188	-25%
CTIPB.1.26		Whole PB on Citrate, vial	±10	mL	\$ 188	-25%
CTIPB.1.27		Whole PB on NaHep, vial	±10	mL	\$ 188	-25%
CTIPB.1.32		Whole PB on K2EDTA, vial	20	mL	\$ 429	-25%
CTIPB.1.33			30	mL	\$ 313	-25%
CTIPB.1.34			50	mL	\$ 366	-25%
CTIPB.1.35			100	mL	\$ 500	-25%
CTIPB.1.8		Serum	2	mL	\$ 59	-25%
CTIPB.1.9			10	mL	\$ 250	-25%
CTIPB.1.10			150-240	mL	\$ 536	-25%
CTIPB.1.15			2	mL	\$ 59	-25%
CTIPB.1.16			Plasma	10	mL	\$ 250
CTIPB.1.17	600	mL		\$ 317	-25%	
CTIPB.1.31	Rich Platelets Plasma	50		mL	\$ 982	-25%
CTIPB.1.24	Buffy Coat, on CPD anticoagulant		40 to 60	mL	\$ 224	-25%
CTINT.1.1	Human Neonatal Tissue	Placenta, Full Thickness, FRESH	1	cm3	\$ 110	-25%
CTINT.1.2		Placenta, Full Thickness, FRESH	10	cm3	\$ 438	-25%
CTINT.1.9		Human Umbilical Cord, FRESH	1	cm	\$ 127	-25%
CTINT.1.11			10	cm	\$ 613	-25%
CTINT.1.3		Placenta, Full Thickness, FROZEN	1	cm3	\$ 254	-25%
CTINT.1.4			10	cm3	\$ 504	-25%
CTINT.1.10		Human Umbilical Cord, FROZEN	1	cm	\$ 167	-25%
CTINT.1.12			10	cm	\$ 727	-25%
CTIUCB.1.1	Human Cord Blood	Whole Cord Blood, Collect/Ship same day, volume varies on donors.	>30	mL	\$ 303	-15%
CTIUCB.1.7		Whole Cord Blood on K2EDTA anticoagulant, vial, FRESH	1 to 10	mL	\$ 202	-25%
CTIUCB.1.8		Whole Cord Blood on K2EDTA anticoagulant, vial, FROZEN	1 to 10	mL	\$ 202	-25%
CTIUCB.1.2		Serum	1	mL	\$ 106	-25%
CTIUCB.1.5		Plasma	1	mL	\$ 106	-25%

Category	Condition of	
	Storage temp	Shipping temp
Fresh	use fresh	4°C
Frozen	-20°C or lower	-80°C or lower

High-quality Immune Cells for your research

At CTIBIOTECH USA™ our mission is to provide high-quality biosourcing solutions to support your preclinical research with precision and scientific relevance.

Thanks to our expertise and advanced technologies, we ensure the quality and relevance of these cells, allowing you to study immune responses under conditions close to physiological reality.

By integrating these cells into your research, you gain more reliable and predictive data on the immunological effects of your products. CTIBIOTECH USA™ positions itself as a trusted partner committed to supporting your scientific projects with rigor and reliability.

Our Immune cells

We offer a comprehensive range of cryopreserved immune cells, carefully sourced from adult peripheral blood and cord blood to meet the diverse needs of your preclinical research. Our rigorous quality control processes ensure that each batch maintains high viability and functionality:



PBMC



T-Helper Cells (CD4+)



Hematopoietic stem cell (CD34+)



NK Cells (CD56+)



T-Cells (CD3+)



T-Killer Cells (CD8+)



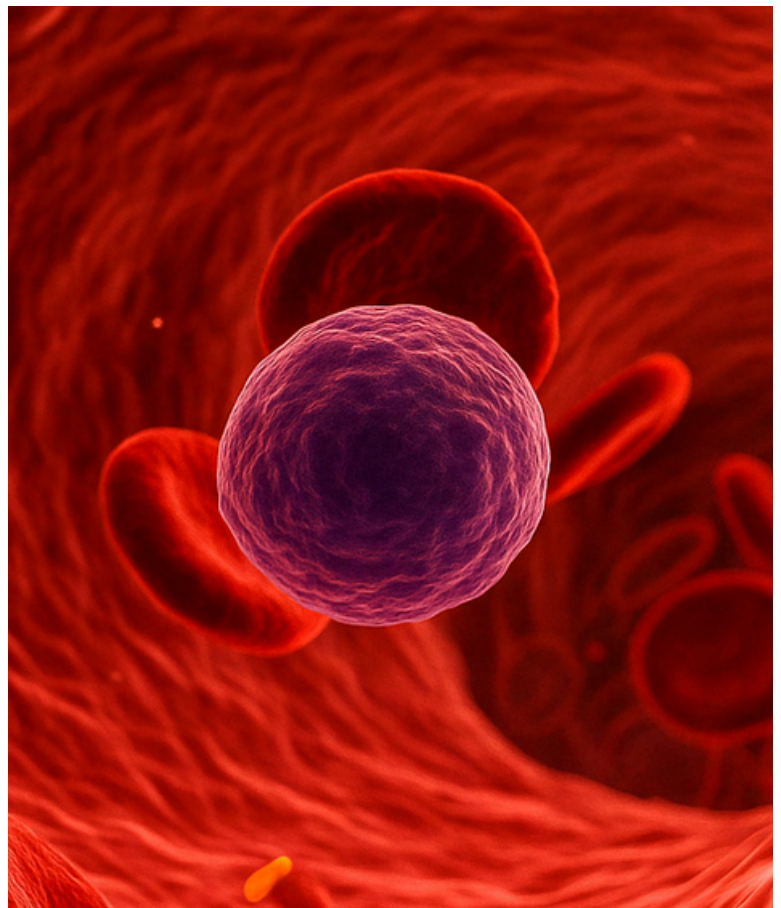
T-Regulatory Cells (CD25+)



Monocytes (CD14+)



B-Cells (CD19+)



/© CTIBIOTECH™, Immune cells

Why Choose Us ?

Quality and purity of cells



Origin and traceability



Reproducibility and reliability



Available cryopreserved



USD Catalogue Products Price List

Blood Cells						
Cat N°C	Description	Additional information	Size	Unit	Price	Discount
CTITEST.1	HIV, HCV, HBV testing				\$ 81	-15%
CTIPB.1.28	Human Adult Peripheral Blood (PB) Cells	Red Blood Cells	5	mL	\$ 263	-25%
CTIPB.1.29			250	mL	\$ 486	-25%
CTIPB.1.30		Platelets	200-650	mL	\$ 508	-25%
CTICC.IMPB.1		PBMC	10.10 ⁶	cells	\$ 97	-25%
CTICC.IMPB.2		T-Helper Cells, CD4+	10.10 ⁶	cells	\$ 605	-25%
CTICC.IMPB.3		B-Cells, CD19+	10.10 ⁶	cells	\$ 841	-15%
CTICC.IMPB.4		Natural Killer Cells (NK), CD56+	10.10 ⁶	cells	\$ 1 576	-15%
CTICC.IMPB.5		T-Cells, CD3+	10.10 ⁶	cells	\$ 456	-25%
CTICC.IMPB.6		T-Killer Cells, CD8+	10.10 ⁶	cells	\$ 841	-15%
CTICC.IMPB.7		T-Regulatory Cells, CD25+	1.10 ⁶	cells	\$ 394	-25%
CTICC.IMPB.8	Monocytes, CD14+	10.10 ⁶	cells	\$ 701	-10%	
CTICC.IMUCB.1	Cord Blood Cells	MNC	10.10 ⁶	cells	\$ 460	-15%
CTICC.IMUCB.34.P		Premium CD34+ Stem/Progenitor Cells, >90% purity	1.10 ⁶	cells	\$ 1 880	-15%
CTICC.IMUCB.34.S		Standard CD34+ Stem/Progenitor Cells, 70 to 90% purity	1.10 ⁶	cells	\$ 1 504	-15%
CTICC.IMUCB.3		CD133+ Stem/Progenitor Cells	1.10 ⁵	cells	\$ 5 062	-15%
CTICC.IMUCB.4		B-Cells, CD19+	1.10 ⁶	cells	\$ 501	-15%
CTICC.IMUCB.5		T-Helper Cells, CD4+	1.10 ⁷	cells	\$ 1 477	-15%
CTICC.IMUCB.6		Natural Killer Cells (NK), CD56+	1.10 ⁶	cells	\$ 302	-15%
CTICC.IMUCB.7		T-Cells, CD3+	1.10 ⁷	cells	\$ 784	-15%
CTICC.IMUCB.8		T-Killer Cells, CD8+	1.10 ⁷	cells	\$ 2 592	-15%
CTICC.IMUCB.9		T-Regulatory Cells, CD25+	1.10 ⁶	cells	\$ 5 701	-15%
CTICC.IMUCB.10	Monocytes, CD14+	1.10 ⁷	cells	\$ 3 134	-15%	

Condition of		
Category	Storage temp	Shipping temp
Fresh	use fresh	4°C
Frozen	-175°C or lower	-80°C or lower

High-quality Stem Cells for your research

At CTIBIOTECH USA™, we focus on the powerful capabilities of human stem cells to design and produce complex, functional *in vitro* models that push the boundaries of biomedical research.

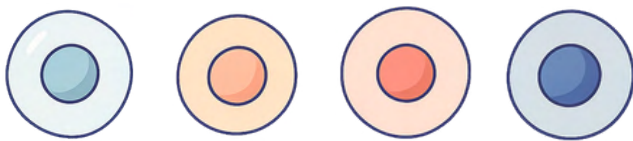
Whether pluripotent, mesenchymal, or adult stem cells, these unique biological sources provide unmatched versatility for recreating key human tissue functionalities under physiological and pathological conditions.

Our stem cells are carefully expanded under controlled conditions and cryopreserved at defined passages to ensure optimal viability, phenotypic stability, and batch-to-batch consistency. Once thawed, they retain full capacity for proliferation and differentiation into relevant human cell types, including epithelial, hepatic, neural, or immune-related lineages.

Our Stem Cells

We source our adult stem cells from ethically obtained human tissues such as bone marrow, dental pulp, and adipose tissue. These origins offer distinct differentiation potentials and immunological profiles, allowing the creation of tailored models for applications in oncology, immunology, regenerative medicine, and metabolic disease.

Through our expertise in stem cell biology, controlled differentiation protocols, and advanced 3D structuring, we deliver biologically meaningful models that closely mimic native tissue organization and function. These models serve as high-value platforms for drug screening, toxicology testing, and disease modelling with enhanced predictability and translational relevance.



Bone Marrow Adipose Tissue Dental Pulp Wharton Jelly

Why Choose Us?

Quality and purity of cells



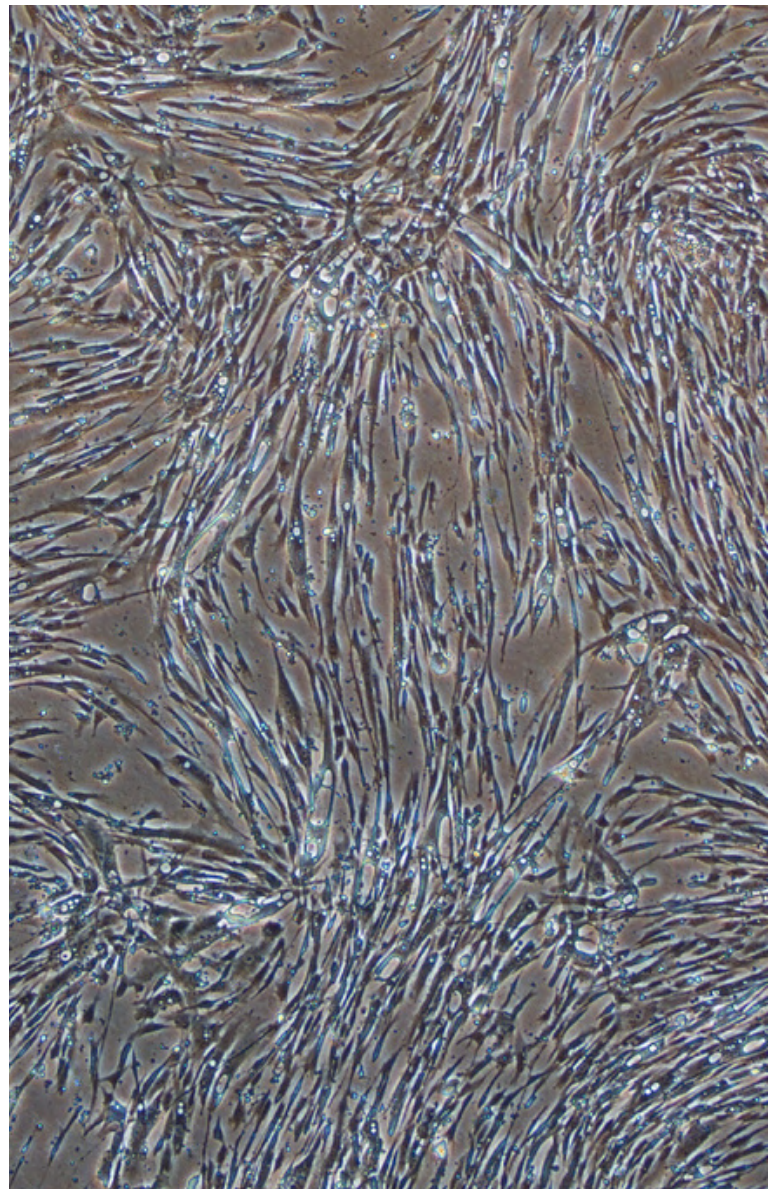
Origin and traceability



Reproducibility and reliability



Select the growth medium adapted to the chosen cell type in the Growth Medium section on pages 22–23



/© CTIBIOTECH™, mesenchymal stem cells bone marrow

USD Catalogue Products Price List

Stem Cell						
Cat N°C	Description	Additional information	Size	Unit	Price	Discount
CTICC1.8.1	Mesenchymal Stem Cell	Human Dental Pulp	1.10^6	cells	\$ 446	-25%
CTICC1.9		Human Subcutaneous Adipose Tissue	1.10^6	cells	\$ 446	-25%
CTICC.IMBM.3		Human Bone Marrow	1.10^6	cells	\$ 580	-25%
CTICC1.13		Wharton Jelly Mesenchymal Stem Cells	1.10^6	cells	\$ 446	-25%

Condition of		
Category	Storage temp	Shipping temp
Frozen	-175°C or lower	-80°C or lower

Tumor Cells

CTIBIOTECH USA™ provides human tumor cells exclusively for research purposes, in full compliance with regulations, and all cryopreserved to guarantee optimal quality and reproducibility.

Our team carefully selects both male and female donors, ensuring a wide diversity of tumor characteristics.

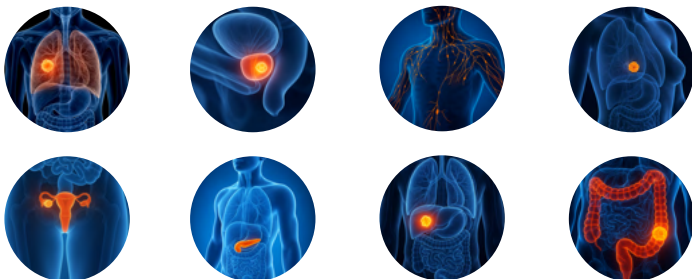
To meet the specific requirements of every research project you can choose cancer (lung, ovary, pancreas, liver, prostate, lymphoma and more), stage, grade and origin. Researchers can access not only primary tumors *ex vivo*, but also primary dissociated tumor cells (DTCs) and patient-derived xenograft (PDX) cells, available in defined quantities (0.5×10^6 or 1×10^6 cells) according to their experimental needs.

By offering extensive donor criteria, including sex and medical history, CTIBIOTECH USA™ supports advanced, personalized approaches to oncology research.

Available Conditions

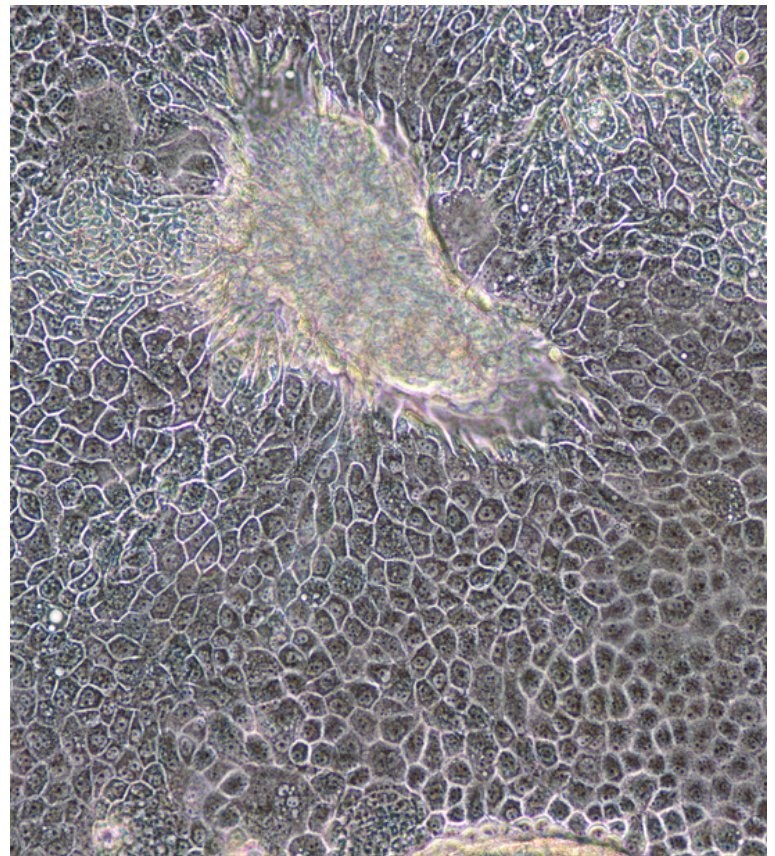
By offering extensive donor criteria, including sex and medical history, CTIBIOTECH USA™ supports advanced, personalized approaches to oncology research. PDX cell lines are also available to help replicate the complexity of real tumors and provide more predictive preclinical models.

- **Cells type:**
 - Primary Tumor *ex vivo*,
 - Primary Dissociated Tumor Cells (DTCs),
 - Primary Dissociated PDX Cells
 - Cell Models
 - CAF (Cancer Associated Fibroblast)
- **Cancer Type (lung, ovary, pancreas, liver, prostate, lymphoma and more)**



- **Sex**
- **Age**
- **Medical history**

Select the growth medium adapted to the chosen cell type in the Growth Medium section on pages 22–23



/© CTIBIOTECH™, Cancer Cells PDX

Why Choose Us ?

Quality and purity of cells

Origin and traceability

Reproducibility and reliability



USD Catalogue Products Price List

Informations on donors are available on request. All samples are supplied with clinical data.

Cancer						
Cat N°C	Description	Additional information	Size	Unit	Price	Discount
CTICC1.27-0,5M	Breast Cancer	Dissociated Primary Tumor Cells	0,5.10 ⁶	cells	\$ 340	-25%
CTICC1.27-1M			1.10 ⁶	cells	\$ 510	-25%
CTICC1.28-0,5M		Dissociated PDX Tumor Cells	0,5.10 ⁶	cells	\$ 340	-25%
CTICC1.28-1M			1.10 ⁶	cells	\$ 510	-25%
CTICC1.29-0,5M		Associated Fibroblasts	0,5.10 ⁶	cells	\$ 340	-25%
CTICC1.29-1M			1.10 ⁶	cells	\$ 510	-25%
CTICC1.46-0,5M		Cells, Characterized, from Primary Tumor Cells	0,5.10 ⁶	cells	\$ 340	-25%
CTICC1.46-1M			1.10 ⁶	cells	\$ 510	-25%
CTICC1.30-0,5M		Cells, Characterized, from PDX	0,5.10 ⁶	cells	\$ 340	-25%
CTICC1.30-1M			1.10 ⁶	cells	\$ 510	-25%
CTICC1.31-0,5M	Ovary cancer	Dissociated Primary Tumor Cells	0,5.10 ⁶	cells	\$ 340	-25%
CTICC1.31-1M			1.10 ⁶	cells	\$ 510	-25%
CTICC1.32-0,5M		Dissociated PDX Tumor Cells	0,5.10 ⁶	cells	\$ 340	-25%
CTICC1.32-1M			1.10 ⁶	cells	\$ 510	-25%
CTICC1.33-0,5M		Associated Fibroblasts	0,5.10 ⁶	cells	\$ 340	-25%
CTICC1.33-1M			1.10 ⁶	cells	\$ 510	-25%
CTICC1.34-1M		Cells, Characterized, from PDX	1.10 ⁶	cells	\$ 510	-25%
CTICC1.35-0,5M		Pancreas cancer	Dissociated PDX Tumor Cells	0,5.10 ⁶	cells	\$ 340
CTICC1.35-1M			1.10 ⁶	cells	\$ 510	-25%
CTICC1.36-0,5M	Cells, Characterized, from PDX		0,5.10 ⁶	cells	\$ 340	-25%
CTICC1.36-1M			1.10 ⁶	cells	\$ 510	-25%
CTICC1.37-0,5M	Lung cancer	cells, Dissociated PDX Tumor Cells	0,5.10 ⁶	cells	\$ 340	-25%
CTICC1.37-1M			1.10 ⁶	cells	\$ 510	-25%
CTICC1.38-0,5M		Cells, Characterized, from PDX	0,5.10 ⁶	cells	\$ 340	-25%
CTICC1.38-1M			1.10 ⁶	cells	\$ 510	-25%
CTICC1.39-0,5M	Liver cancer	Dissociated Primary Tumor Cells	0,5.10 ⁶	cells	\$ 340	-25%
CTICC1.40-0,5M		Associated Fibroblasts	0,5.10 ⁶	cells	\$ 340	-25%
CTICC1.40-1M			1.10 ⁶	cells	\$ 510	-25%
CTICC1.45-0,5M		Cells, Characterized, from Primary Tumor Cells	0,5.10 ⁶	cells	\$ 340	-25%
CTICC1.45-1M			1.10 ⁶	cells	\$ 510	-25%
CTICC1.41-0,5M	Prostate cancer	Prostatic Primary Epithelial cells	0,5.10 ⁶	cells	\$ 340	-25%
CTICC1.41-1M			1.10 ⁶	cells	\$ 510	-25%
CTICC1.42-0,5M		Tumoral Fibroblasts Primary Culture	0,5.10 ⁶	cells	\$ 340	-25%
CTICC1.42-1M			1.10 ⁶	cells	\$ 510	-25%
CTICC1.43-0,5M	Lymphoma	Cells, Characterized, from PDX	0,5.10 ⁶	cells	\$ 340	-25%
CTICC1.43-1M			1.10 ⁶	cells	\$ 510	-25%
CTICC1.44-0,5M		Dissociated PDX Tumor Cells	0,5.10 ⁶	cells	\$ 340	-25%
CTICC1.44-1M			1.10 ⁶	cells	\$ 510	-25%

Condition of		
Category	Storage temp	Shipping temp
Frozen	-175°C or lower	-80°C or lower

Optimized Medium for Tumor and Skin Models

At CTIBIOTECH USA™, our mission is to provide high-quality biosourcing and formulation solutions to support your preclinical research with precision and scientific relevance.

Thanks to our expertise and advanced technologies, we develop and supply specialized culture medium tailored to the needs of tumor models and skin-derived cells.

These optimized media ensure the viability, functionality, and relevance of your *in vitro* models, allowing you to mimic physiological conditions more accurately.

CTIBIOTECH USA™ positions itself as a trusted partner, committed to supporting your scientific projects with rigor, innovation, and reliability.

Our Media

Our culture media are specifically developed to recreate a highly realistic human environment, supporting optimal growth of cell models, organoids, and complex tissues. The Lipid Droplet Stimulator can also be added to modulate lipid accumulation in relevant models.



Medium for Fibroblasts (500ml)



Medium for Keratinocytes (500ml)



Medium for Melanocytes (500ml)



Medium for Adipose Tissue Derived Cells (500ml)



Medium for Sebocyte Growth and Differentiation (500ml)



Medium for Cancer Cell N°1-11 (500ml)



Lipid Droplet Stimulator (LDS) (500 µL)

*Check the catalog to see the details of the cancers supported by the medium.

Why Choose Us ?

Published Research



40 years experience in medical research



ISO certified



/© CTIBIOTECH™, Medium for Adipose Tissue 500ml

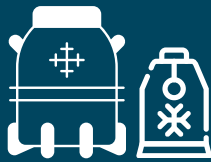
USD Catalogue Products Price List

Growth Medium (GM) & Supplements					
Cat N°C	Description	Additional information	Size	Unit	Price
CTIGM.Fibro	Growth Medium (GM)	GM for Fibroblasts	500	mL	\$ 199
CTIGM.Kerat		GM for Keratinocytes	500	mL	\$ 356
CTIGM.Melano		GM for Melanocytes	500	mL	\$ 419
CTIGM.Adipo		GM for Adipose Tissue Derived Cells	500	mL	\$ 293
Seb4Gln		Sebocyte growth and differentiation medium	500	mL	\$ 465
CTIGM.Cancer1		GM for Cancer Cell N°1 (Pancreas DTC)	500	mL	\$ 347
CTIGM.Cancer2		GM for Cancer Cell N°2 (Ovary Primary Cells - Pancreas Primary Cells - Pancreas DTC)	500	mL	\$ 199
CTIGM.Cancer3		GM for Cancer Cell N°3 (Breast DTC - Ovary DTC - Ovary Primary Cells - Breast Primary Cells)	500	mL	\$ 487
CTIGM.Cancer4		GM for Cancer Cell N°4 (Lung DTC - Lung Primary Cells - Pancreas DTC)	500	mL	\$ 486
CTIGM.Cancer5		GM for Cancer Cell N°5 (Breast Primary Cells)	500	mL	\$ 266
CTIGM.Cancer6		GM for Cancer Cell N°6 (Prostate explant - Prostate DTC - Prostate primary cells)	500	mL	\$ 830
CTIGM.Cancer7		GM for Cancer Cell N°7 (Prostate primary cells)	500	mL	\$ 490
CTIGM.Cancer8		GM for Cancer Cell N°8 (Prostate primary cells)	500	mL	\$ 498
CTIGM.Cancer9		GM for Cancer Cell N°9 (Lymphoma Primary Cells)	500	mL	\$ 1 183
CTIGM.Cancer11		GM for Cancer Cell N°11 (Prostate explant)	500	mL	\$ 837
CTIGM.STEMGOLD	GM for MSC and CAF Serum free	500	mL	\$ 457	
LDS	Supplements	Lipid Droplet Stimulator (LDS) 500 µL	500	µL	\$ 79

Category	Condition of	
	Storage temp	Shipping temp
Fresh	use fresh	4°C
Frozen	-175°C or	-80°C or



The process :



Custom request



Feasibility by our team



Quotation

Your project, Our expertise

CTIBIOTECH USA™ offers a fully tailored service, through three key steps a custom request to define your specific needs a feasibility assessment conducted by our team to evaluate your project then a quotation provided based on your criteria, we supply healthy or pathological tissues with various preservation options available FFPE, OCT, DTC, FRESH or FLASH FROZEN.

All types of matrix



Plasma



Tissue



Serum



Cells



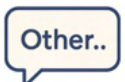
Urines



Saliva



Swab



Why Choose us :



informed consent



Validation by the French ethics committee (IRB)



> 200 healthcare partners & Biobank

Contact us



USD Catalogue Products Price List

Donor selection criteria					
Cat N°C	Description	Additional information	Size	Unit	Price
CTIDS1.1	Donor selection criteria 1	Fat removal			\$ 117
CTIDS1.2	Donor selection criteria 2	Age selection			\$ 12
CTIDS1.3	Donor selection criteria 3	Sex/gender selection			\$ 12
CTIDS1.4	Donor selection criteria 4	Ethnicity selection			\$ 12
CTIDS1.5	Donor selection criteria 5	No Stretch marks selection			\$ 12
CTIDS1.6	Donor selection criteria 6	Phototype selection			\$ 12
CTIDS1.7	Donor selection criteria 7	Anatomical Localisation selection			\$ 12
CTIDS1.8	Donor selection criteria 8	Other type of criterion			\$ 12
CTIDS1.9	Donor selection criteria 9	Validation with picture of the skin sample			\$ 59

Mandatory delivery fees					
Cat N°C	Description	Additional information	Size	Unit	Price
CTIBOX.shipdryice-10Kg	Dry ice	10kg			\$ 134
CTIBOX.shipdryice-20Kg	Dry ice	20kg			\$ 182
CTIBOX.shipfresh-Small	BOX 4°C	SMALL SIZE			\$ 37
CTIBOX.shipfresh-Medium	BOX 4°C	MEDIUM SIZE			\$ 31
CTIBOX.shipfresh-Large	BOX 4°C	LARGE SIZE			\$ 25

Condition of		
Category	Storage temp	Shipping temp
Fresh	use fresh	4°C

Why Choose us :



Recognized
expertise



Innovative projects



A commitment to ethics
and traceability

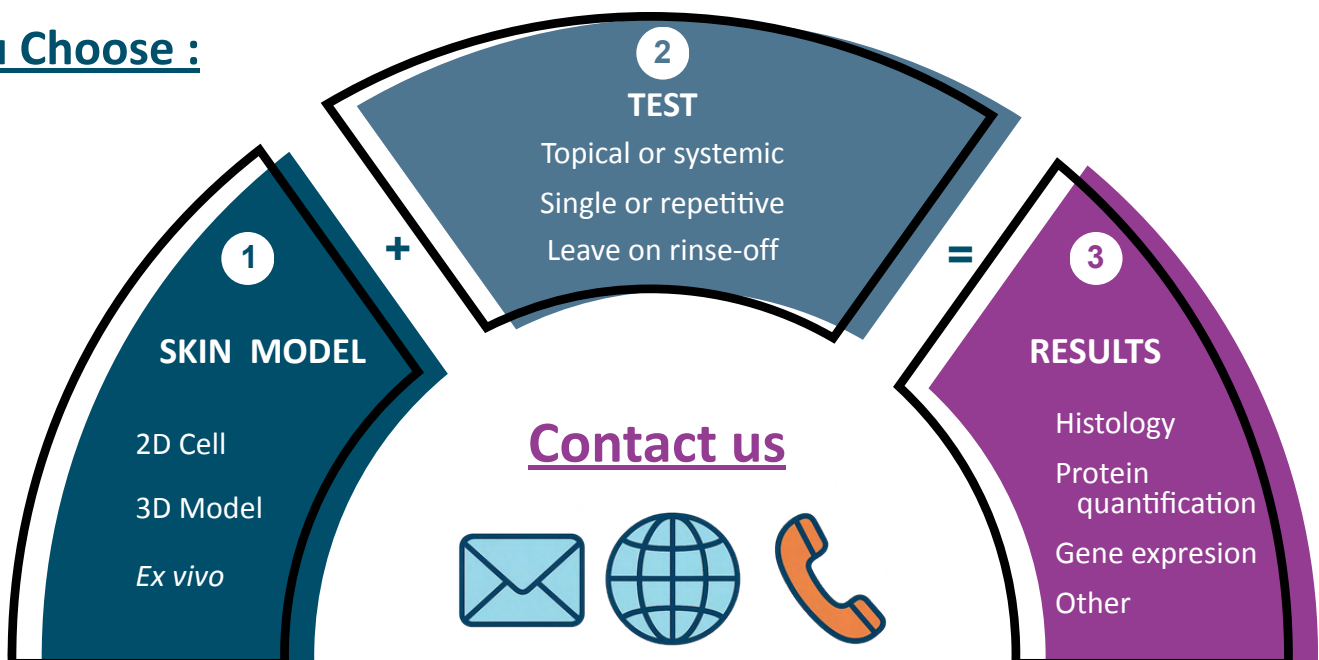
Your Project, Our Expertise

CTIBIOTECH USA™ supports you in the design and implementation of tailor-made projects, carried out directly in our laboratories.

Our team provides its scientific and technical expertise to develop innovative solutions adapted to your specific needs.

We also assist you in exploring approaches not yet defined by regulations, and in the formulation of your product claims based on solid scientific data.

You Choose :

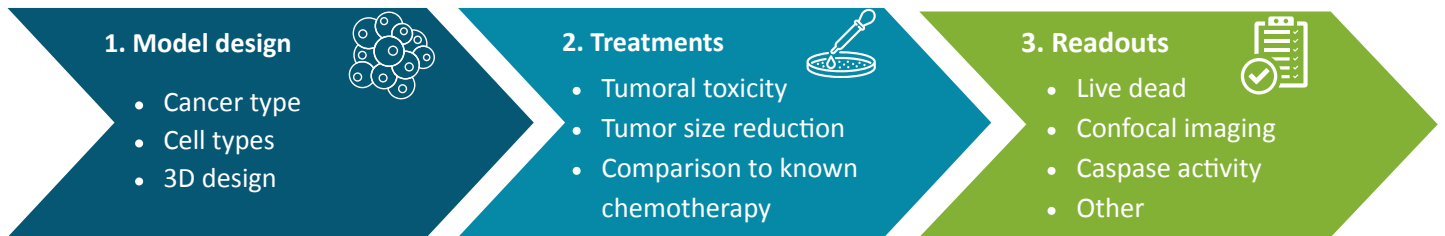




© CTIBIOTECH™, 3D Model

CTIMICROTUMORS for predictive and personalized medicine

By combining excellence in cancer research, tissue engineering and 3D bioprinting, CTIBIOTECH USA™ has developed the building blocks to produce large-scale, reliable, robust, reproducible, predictive, personalized 3D biological models of human tumors in sufficient quantity to accelerate the development of drug candidates for cancer chemotherapy and immunotherapy.



The Power of 3D to Drive Your Projects Forward

At CTIBIOTECH USA™, we offer a fully **customized service**: you choose the test you want to perform, and we carry it out in our own laboratories using our 3D models.

All the steps outlined above are handled by our expert team, according to your specific needs in oncology.

These innovative models, positioned between the limitations of 2D cell cultures and the ethical concerns of animal testing, provide a human-relevant, reliable, and predictive alternative for your R&D projects.

CTIBIOTECH™ 3D MODELS



3D bioprinted

- ← Ethics ✓
- ← Close to human ✓
- ← Limited cost ✓
- ← Fast ✓
- ← Wide choice of pathological models ✓
- ← Reliable ✓

Contact us to define your project





US (Whatsapp): +1 (215) 391 0300
FR: +33 9 67 10 74 55

CTIBIOTECH USA Inc.

601 Walnut Street, Suite 825,
Philadelphia, PA, 19106, USA

ctibiotechusa@ctibiotech.com

ctibiotechusa.com

for  **biolabs** for ADVANCED THERAPEUTICS
philadelphia



CTIBIOSOURCING™

ctibiosourcing@ctibiotech.com
independentbiobank.com



CTISKIN™

ctiskin@ctibiotech.com
ctiskin.com



CTIPHARMA™

ctipharma@ctibiotech.com
ctipharma.fr