

DP LASER

PRODUCT BROCHURE

LASER CUTTING/WELDING/CLEANING/BENDING/AUTOMATION



DPLASER

COMPANY PROFILE

DP LASER was founded in 2011, we are a high-tech enterprise, combining research and development, production, sales and service as a whole, we are committed to leading the innovation and upgrading of laser equipment, we focus on the research and development and production of optical fibre laser cutting machine, laser welding machine, laser cleaning machine, three-dimensional five-axis cutting and welding machines, robotic cutting and welding machine, CNC bending machine and other medium and high-end laser automation equipment. We provide high-quality full-scenario intelligent solutions for our global customers.

DP LASER, as one of the largest customers of BOCHU, has two production bases in China, one is located in Dongguan, Guangdong Province, and the other is located in Nantong, Jiangsu Province, with a total area of 90 acres. We have more than 20 wholly-owned subsidiaries or offices in major industrial cities, with 430 employees, we produce more than 20,000 units of equipment a year, and our annual revenue exceeds 1 billion yuan.

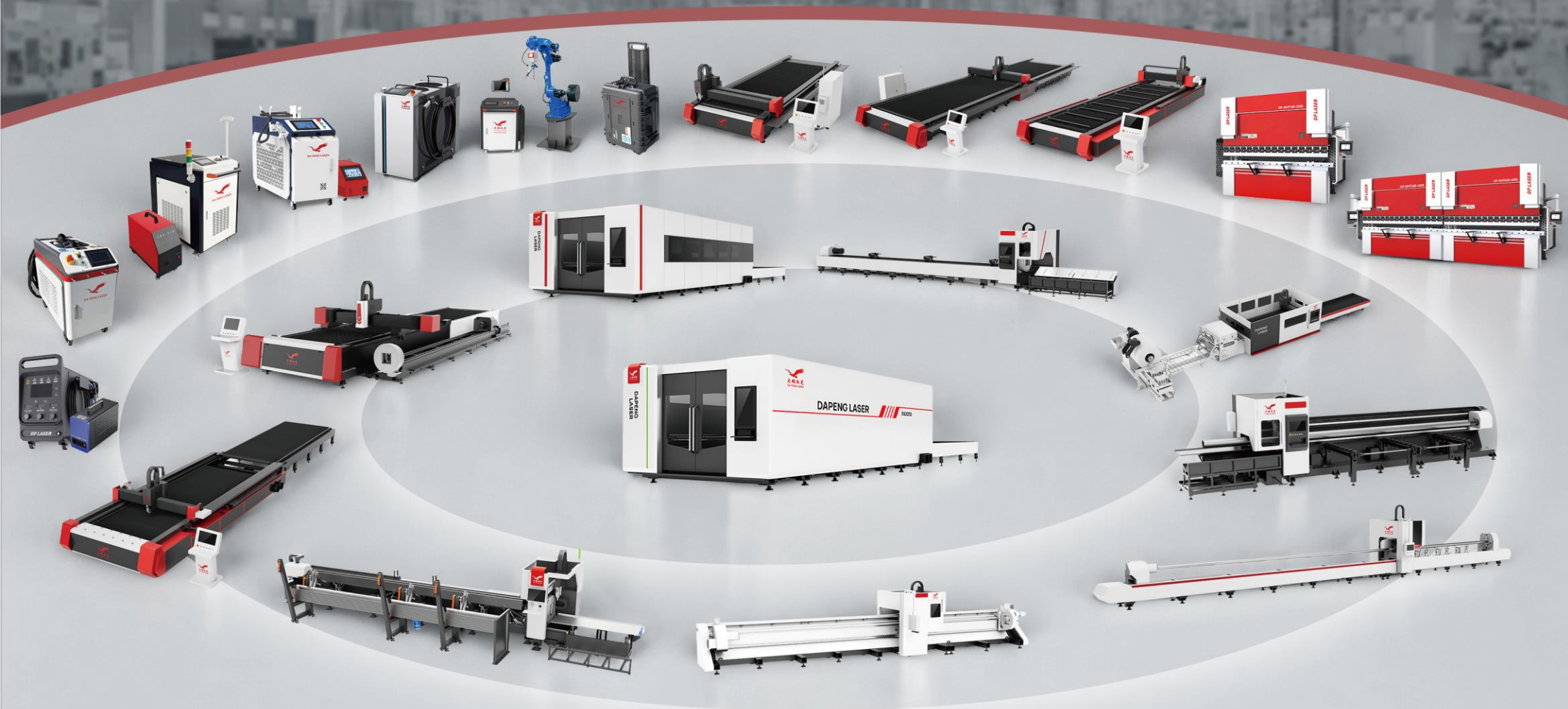
DP LASER has strong R&D and manufacturing capabilities, we have jointly developed robot cutting, welding and laser handheld welding systems with our system suppliers, we have independently developed and produced laser water chillers, nitrogen generators, etc.; our factories have large-scale gantry milling machine machining centres, CNC machining centres, sheet metal machining centres, and welding workshops, covering the whole process from the laser cutter to the finished product leaving the factory.

DP LASER serves more than 25,000 customers, we have a professional overseas after-sales service team to provide customers with perfect after-sales service, and provide online technical support and worldwide door-to-door service, we ensure that our customers can enjoy the high quality of pre-sales, sales and after-sales service.

DP LASER employees know that quality and service is the fundamental survival of the company, continuous innovation is the basis for long-term development of the company, we do our best to help create value for our customers, DP LASER will continue to grow, and is committed to become the world's top laser intelligent equipment famous brand.

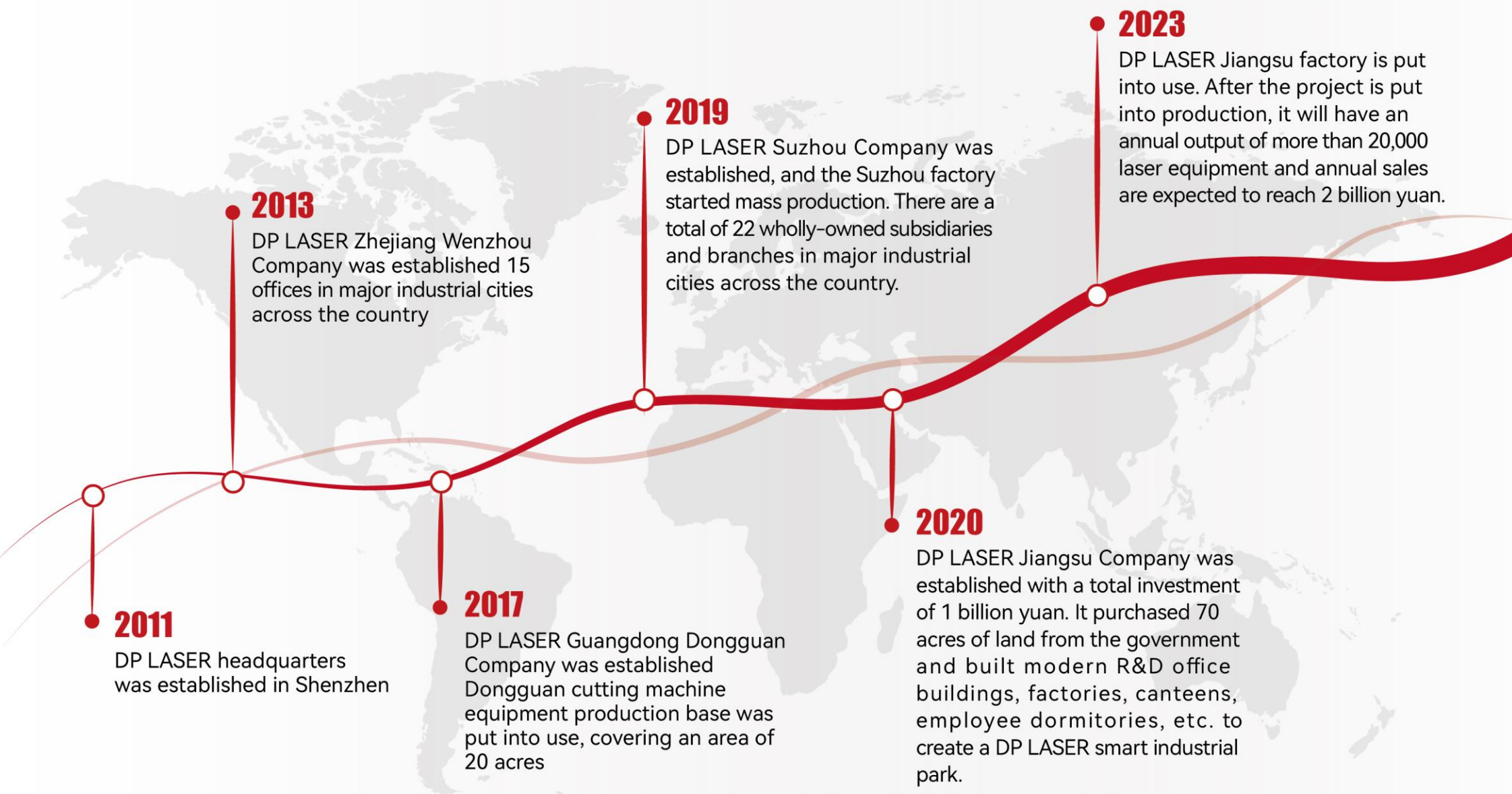


ONE-STOP SOLUTION FOR LASER AUTOMATION EQUIPMENT



DEVELOPMENT HISTORY

DP LASER



01 Fiber laser cutting machine

| | |
|--|----|
| S series 12kw-60kw medium and high power fiber laser cutting machine | 01 |
| F series 3kw-12kw international version fiber laser cutting machine | 03 |
| CS series fast cutting fiber laser cutting machine | 04 |
| A series 1.5-6kw cost-effective fiber laser cutting machine | 05 |
| AL series 1.5-6kw economical fiber laser tube cutting machine | 06 |
| D series chuck side-mounted fiber laser tube cutting machine | 07 |
| E series chuck horizontal fiber laser tube cutting machine | 08 |
| L series three-chuck heavy-duty fiber laser tube cutting machine | 09 |
| BG series plate and tube integrated fiber laser cutting machine | 10 |
| J series coil fiber laser cutting machine | 11 |
| JM series precision fiber laser cutting machine | 12 |

02 Handheld fiber laser

| | |
|--|----|
| HL series handheld fiber laser welding machine | 13 |
| Handheld Fiber Laser Welding/Cutting/Cleaning Solution | 14 |
| LWAC series air-cooled handheld | 15 |

03 Fiber laser cleaning machine

| | |
|--|----|
| LC-P series pulse fiber laser cleaning machine | 16 |
|--|----|

04 Robot Laser Cutting/Welding/Cleaning Solution

| | |
|---|----|
| Robot Laser Cutting/Welding/Cleaning Solution | 17 |
|---|----|

05 CNC bending machine

| | |
|--------------------------------------|----|
| DMT series CNC bending machine | 19 |
| FS series CNC bending machine | 20 |
| UMT series CNC bending machine | 21 |

DP LASER



Medium And High Power Fiber Laser Cutting Machine

1. Bus control system has more cutting process and higher motion performance.
2. Self-developed ultra-high-power machine structure design, the use of copper and graphite with refractory bricks wrapped around the machine table to prevent thermal deformation of the machine table at high temperatures, to ensure stable work for a long time.
3. Nozzle cooling system, the cutting quality remains stable after a long time of work.
4. Unique drag chain structure design, no need to plug and unplug the optical fibre during the transport process, avoiding the risk of dust contamination inside the cutting head caused by the secondary installation, or crashing the optical fibre output head.



SL SERIES

| Model | Cutting range | Laser output power | Maximum acceleration | Minimum slit width | X/Ypositioning accuracy | Maximum positioning speed |
|--------------|---------------|----------------------------|----------------------|--------------------|-------------------------|---------------------------|
| DPE-SL3015 | 3000x1500mm | 6000W.12000W | 1.5G | 0.15mm | ±0.03mm | 110m/min |
| DPE-SL3015D | 3000x1500mm | 6000W.12000W | 1.5G | 0.15mm | ±0.03mm | 110m/min |
| DPE-SL4020 | 4000x2000mm | 6000W.12000W | 1.5G | 0.15mm | ±0.03mm | 110m/min |
| DPE-SL4020F | 4000x2000mm | 6000W.12000W | 1.5G | 0.15mm | ±0.03mm | 110m/min |
| DPE-SL4020D | 4000x2000mm | 6000W.12000W | 1.5G | 0.15mm | ±0.03mm | 110m/min |
| DPE-SL6020 | 6000x2000mm | 6000W.12000W.20000W.30000W | 1.5G | 0.15mm | ±0.03mm | 110m/min |
| DPE-SL6020F | 6000x2000mm | 6000W.12000W.20000W.30000W | 1.5G | 0.15mm | ±0.03mm | 110m/min |
| DPE-SL6020D | 6000x2000mm | 6000W.12000W.20000W.30000W | 1.5G | 0.15mm | ±0.03mm | 110m/min |
| DPE-SL6025 | 6000x2500mm | 6000W.12000W.20000W.30000W | 1.5G | 0.15mm | ±0.03mm | 110m/min |
| DPE-SL6025F | 6000x2500mm | 6000W.12000W.20000W.30000W | 1.5G | 0.15mm | ±0.03mm | 110m/min |
| DPE-SL6025D | 6000x2500mm | 6000W.12000W.20000W.30000W | 1.5G | 0.15mm | ±0.03mm | 110m/min |
| DPE-SL8025 | 8000x2500mm | 6000W.12000W.20000W.30000W | 1.5G | 0.15mm | ±0.03mm | 110m/min |
| DPE-SL8025D | 8000x2500mm | 6000W.12000W.20000W.30000W | 1.5G | 0.15mm | ±0.03mm | 110m/min |
| DPE-SL10025 | 10000x2500mm | 6000W.12000W.20000W.30000W | 1.5G | 0.15mm | ±0.03mm | 110m/min |
| DPE-SL10025D | 10000x2500mm | 6000W.12000W.20000W.30000W | 1.5G | 0.15mm | ±0.03mm | 110m/min |
| DPE-SL12025 | 12000x2500mm | 6000W.12000W.20000W.30000W | 1.5G | 0.15mm | ±0.03mm | 110m/min |
| DPE-SL12025D | 12000x2500mm | 6000W.12000W.20000W.30000W | 1.5G | 0.15mm | ±0.03mm | 110m/min |
| DPE-SL12030 | 12000x3000mm | 6000W.12000W.20000W.30000W | 1.5G | 0.15mm | ±0.03mm | 110m/min |
| DPE-SL13025 | 13000x2500mm | 6000W.12000W.20000W.30000W | 1.5G | 0.15mm | ±0.03mm | 110m/min |
| DPE-SL14030 | 14000x3000mm | 6000W.12000W.20000W.30000W | 1.5G | 0.15mm | ±0.03mm | 110m/min |

Medium And High Power Fiber Laser Cutting Machine

1. Bus control system has more cutting process and higher motion performance.
2. Self-developed ultra-high-power machine structure design, the use of copper and graphite with refractory bricks wrapped around the machine table to prevent thermal deformation of the machine table at high temperatures, to ensure stable work for a long time.
3. Nozzle cooling system, the cutting quality remains stable after a long time of work.
4. Unique drag chain structure design, no need to plug and unplug the optical fibre during the transport process, avoiding the risk of dust contamination inside the cutting head caused by the secondary installation, or crashing the optical fibre output head.



SH SERIES

| Model | Cutting range | Laser output power | Maximum acceleration | Minimum slit width | X/Ypositioning accuracy | Maximum positioning speed |
|--------------|---------------|----------------------------|----------------------|--------------------|-------------------------|---------------------------|
| DPE-SH3015 | 3000x1500mm | 6000W.12000W | 1.5G | 0.15mm | ±0.03mm | 110m/min |
| DPE-SH3015F | 3000x1500mm | 6000W.12000W | 1.5G | 0.15mm | ±0.03mm | 110m/min |
| DPE-SH3015D | 3000x1500mm | 6000W.12000W | 1.5G | 0.15mm | ±0.03mm | 110m/min |
| DPE-SH4020 | 4000x2000mm | 6000W.12000W | 1.5G | 0.15mm | ±0.03mm | 110m/min |
| DPE-SH4020F | 4000x2000mm | 6000W.12000W | 1.5G | 0.15mm | ±0.03mm | 110m/min |
| DPE-SH4020D | 4000x2000mm | 6000W.12000W | 1.5G | 0.15mm | ±0.03mm | 110m/min |
| DPE-SH6020 | 6000x2000mm | 6000W.12000W.20000W.30000W | 1.5G | 0.15mm | ±0.03mm | 110m/min |
| DPE-SH6020F | 6000x2000mm | 6000W.12000W.20000W.30000W | 1.5G | 0.15mm | ±0.03mm | 110m/min |
| DPE-SH6025D | 6000x2000mm | 6000W.12000W.20000W.30000W | 1.5G | 0.15mm | ±0.03mm | 110m/min |
| DPE-SH6025 | 6000x2500mm | 6000W.12000W.20000W.30000W | 1.5G | 0.15mm | ±0.03mm | 110m/min |
| DPE-SH6025F | 6000x2500mm | 6000W.12000W.20000W.30000W | 1.5G | 0.15mm | ±0.03mm | 110m/min |
| DPE-SH6025D | 6000x2500mm | 6000W.12000W.20000W.30000W | 1.5G | 0.15mm | ±0.03mm | 110m/min |
| DPE-SH8025 | 8000x2500mm | 6000W.12000W.20000W.30000W | 1.5G | 0.15mm | ±0.03mm | 110m/min |
| DPE-SH8025D | 8000x2500mm | 6000W.12000W.20000W.30000W | 1.5G | 0.15mm | ±0.03mm | 110m/min |
| DPE-SH10025 | 10000x2500mm | 6000W.12000W.20000W.30000W | 1.5G | 0.15mm | ±0.03mm | 110m/min |
| DPE-SH10025D | 10000x2500mm | 6000W.12000W.20000W.30000W | 1.5G | 0.15mm | ±0.03mm | 110m/min |
| DPE-SH12025 | 12000x2500mm | 6000W.12000W.20000W.30000W | 1.5G | 0.15mm | ±0.03mm | 110m/min |
| DPE-SH12025D | 12000x2500mm | 6000W.12000W.20000W.30000W | 1.5G | 0.15mm | ±0.03mm | 110m/min |
| DPE-SH12030 | 12000x3000mm | 6000W.12000W.20000W.30000W | 1.5G | 0.15mm | ±0.03mm | 110m/min |
| DFE-SH13025 | 13000x2500mm | 6000W.12000W.20000W.30000W | 1.5G | 0.15mm | ±0.03mm | 110m/min |
| DFE-SH14030 | 14000x3000mm | 6000W.12000W.20000W.30000W | 1.5G | 0.15mm | ±0.03mm | 110m/min |

International Version Fiber Laser Cutting Machine

1. Save transportation costs

Width suitable for container, F3015 series can be loaded in a 20ft/40ft standard container.

2. Integrated design

No need to plug and unplug optical fiber and complex connecting cable, and simple on-site installation and commissioning.

3. The adjustment of cutting parameters is simple

A lot of cutting tests will be carried out before leaving the factory. Carbon steel and stainless steel, with different thicknesses, save all parameters, and cut different materials and thicknesses only need to switch parameters



| Model | Cutting range | Laser output power | Maximum acceleration | Minimum slit width | X/Ypositioning accuracy | Maximum positioning speed |
|------------|---------------|--------------------------------|----------------------|--------------------|-------------------------|---------------------------|
| DPE-F3015 | 3000x1500mm | 1500W.2000W.3000W.6000W.12000w | 1.5G | 0.15mm | ±0.03mm | 110m/min |
| DPE-F3015F | 3000x1500mm | 1500W.2000W.3000W.6000W.12000w | 1.5G | 0.15mm | ±0.03mm | 110m/min |
| DPE-F3015D | 3000x1500mm | 1500W.2000W.3000W.6000W.12000w | 1.5G | 0.15mm | ±0.03mm | 110m/min |

Fast Cutting Fiber Laser Cutting Machine

- 1、Adopting high-performance servo and heavy duty machine design to ensure high cutting precision and good cutting quality in high speed cutting
- 2、Acceleration up to 2.0G, low-pass frequency 8.0.
- 3, with 1.5G acceleration, low-pass frequency 8 cutting, high precision, cutting 1.5mm and the following thickness than the default parameters of the A series is about 30% faster than the cutting 2-3mm plate is about 10-25% faster.



| Model | Cutting range | Laser output power | Maximum acceleration | Minimum slit width | X/Ypositioning accuracy | Maximum positioning speed |
|-------------|---------------|--------------------|----------------------|--------------------|-------------------------|---------------------------|
| DPE-CS3015 | 3000x1500mm | 3000W | 2G | 0.15mm | ±0.03mm | 110m/min |
| DPE-CS3015F | 3000x1500mm | 3000W | 2G | 0.15mm | ±0.03mm | 110m/min |
| DPE-CS3015D | 3000x1500mm | 3000W | 2G | 0.15mm | ±0.03mm | 110m/min |

| Model | Machin size | Machine weight | Total weight |
|-------------|------------------|----------------|--------------|
| DPE-CS3015 | 4831*2225*948mm | 1605kg | 2770kg |
| DPE-CS3015F | 8324*2597*2008mm | 1960kg | 4500kg |
| DPE-CS3015D | 8217*2757*2319mm | 1960kg | 5600kg |

Cost-effective Fiber Laser Cutting Machine

1. Mature and stable structural design, validated in over 2000 markets
- 2.8mm thick pipe welding, 800 degree Celsius high-temperature annealing to eliminate internal stress, ensuring that the machine tool will not deform after 20 years of use



| Model | Cutting range | Laser output power | Maximum acceleration | Minimum slit width | X/Ypositioning accuracy | Maximum positioning speed | Machin size | Machine weight | Total weight |
|------------|---------------|-------------------------|----------------------|--------------------|-------------------------|---------------------------|-------------------|----------------|--------------|
| DPE-A3015 | 3000x1500mm | 1500W.2000W.3000W.6000W | 1.2G | 0.15mm | ±0.03mm | 110m/min | 4831*2225*948mm | 1605kg | 2770kg |
| DPE-A3015F | 3000x1500mm | 1500W.2000W.3000W.6000W | 1.2G | 0.15mm | ±0.03mm | 110m/min | 8324*2597*2008mm | 1960kg | 4500kg |
| DPE-A3015D | 3000x1500mm | 1500W.2000W.3000W.6000W | 1.2G | 0.15mm | ±0.03mm | 110m/min | 8217*2757*2319mm | 1960kg | 5600kg |
| DPE-A4020 | 4000x2000mm | 1500W.2000W.3000W.6000W | 1.2G | 0.15mm | ±0.03mm | 110m/min | 6015*3237*1948mm | 2400kg | 4094kg |
| DPE-A4020F | 4000x2000mm | 1500W.2000W.3000W.6000W | 1.2G | 0.15mm | ±0.03mm | 110m/min | 10313*3122*1948mm | 2600kg | 5600kg |
| DPE-A4020D | 4000x2000mm | 1500W.2000W.3000W.6000W | 1.2G | 0.15mm | ±0.03mm | 110m/min | 10252*3265*2195mm | 2600kg | 6800kg |
| DPE-A6020 | 6000x2000mm | 1500W.2000W.3000W.6000W | 1.2G | 0.15mm | ±0.03mm | 110m/min | 7966*2993*1948mm | 3090kg | 5000kg |
| DPE-A6020F | 6000x2000mm | 1500W.2000W.3000W.6000W | 1.2G | 0.15mm | ±0.03mm | 110m/min | 14708*3282*2185mm | 3738kg | 7900kg |
| DPE-A6020D | 6000x2000mm | 1500W.2000W.3000W.6000W | 1.2G | 0.15mm | ±0.03mm | 110m/min | 14667*3255*2369mm | 3738kg | 9000kg |
| DPE-A6025 | 6000x2500mm | 1500W.2000W.3000W.6000W | 1.2G | 0.15mm | ±0.03mm | 110m/min | 7978*3554*1948mm | 3558kg | 5200kg |
| DPE-A6025F | 6000x2500mm | 1500W.2000W.3000W.6000W | 1.2G | 0.15mm | ±0.03mm | 110m/min | 14667*3682*2185mm | 4500kg | 7500kg |
| DPE-A6025D | 6000x2500mm | 1500W.2000W.3000W.6000W | 1.2G | 0.15mm | ±0.03mm | 110m/min | 14614*3825*2195mm | 8940kg | 16600kg |
| DPE-A8015 | 6000x1500mm | 1500W.2000W | 1.2G | 0.15mm | ±0.03mm | 110m/min | 7915*2766*1930mm | 2000kg | 3500kg |

Economical Fiber Laser Tube Cutting Machine

1. High cost-effectiveness
2. The electrical part and control panel are integrated with the machine tool, occupying a small area and providing flexible positioning.



| Model | Cutting range | Laser output power | Maximum acceleration | Minimum slit width | X/Ypositioning accuracy | Maximum positioning speed | Machin size | Machine weight | Total weight |
|------------|---------------|-------------------------|----------------------|--------------------|-------------------------|---------------------------|-------------------|----------------|--------------|
| DPE-A3015 | 3000x1500mm | 1500W.2000W.3000W.6000W | 1.2G | 0.15mm | ±0.03mm | 110m/min | 4831*2225*948mm | 1405kg | 2770kg |
| DPE-A3015F | 3000x1500mm | 1500W.2000W.3000W.6000W | 1.2G | 0.15mm | ±0.03mm | 110m/min | 8324*2597*2008mm | 1760kg | 4500kg |
| DPE-A3015D | 3000x1500mm | 1500W.2000W.3000W.6000W | 1.2G | 0.15mm | ±0.03mm | 110m/min | 8217*2757*2319mm | 1760kg | 5400kg |
| DPE-A4020 | 4000x2000mm | 1500W.2000W.3000W.6000W | 1.2G | 0.15mm | ±0.03mm | 110m/min | 6015*3237*1948mm | 2200kg | 3890kg |
| DPE-A4020F | 4000x2000mm | 1500W.2000W.3000W.6000W | 1.2G | 0.15mm | ±0.03mm | 110m/min | 10313*3122*1948mm | 2400kg | 5400kg |
| DPE-A4020D | 4000x2000mm | 1500W.2000W.3000W.6000W | 1.2G | 0.15mm | ±0.03mm | 110m/min | 10252*3265*2195mm | 2400kg | 6600kg |
| DPE-A6020 | 6000x2000mm | 1500W.2000W.3000W.6000W | 1.2G | 0.15mm | ±0.03mm | 110m/min | 7966*2993*1948mm | 2890kg | 4800kg |
| DPE-A6020F | 6000x2000mm | 1500W.2000W.3000W.6000W | 1.2G | 0.15mm | ±0.03mm | 110m/min | 14708*3282*2185mm | 3738kg | 7900kg |
| DPE-A6020D | 6000x2000mm | 1500W.2000W.3000W.6000W | 1.2G | 0.15mm | ±0.03mm | 110m/min | 14667*3255*2369mm | 3738kg | 9000kg |
| DPE-A6025 | 6000x2500mm | 1500W.2000W.3000W.6000W | 1.2G | 0.15mm | ±0.03mm | 110m/min | 7978*3554*1948mm | 3558kg | 5200kg |
| DPE-A6025F | 6000x2500mm | 1500W.2000W.3000W.6000W | 1.2G | 0.15mm | ±0.03mm | 110m/min | 14667*3682*2185mm | 4500kg | 7500kg |
| DPE-A6025D | 6000x2500mm | 1500W.2000W.3000W.6000W | 1.2G | 0.15mm | ±0.03mm | 110m/min | 14614*3825*2195mm | 8940kg | 16600kg |
| DPE-A6015 | 6000x1500mm | 1500W.2000W.3000W.6000W | 1.2G | 0.15mm | ±0.03mm | 110m/min | 7915*2766*1930mm | 2000kg | 3500kg |

Chuck Side-mounted Fiber Laser Tube Cutting Machine

- 1.The side hanging design of the rear chuck is convenient for loading, with simple operation and high efficiency for tube loading.
- 2.Front card offside cutting, final pipe cutting with dual chuck clamping for cutting, ensuring cutting accuracy while achieving extremely short tail material
- 3.When cutting large channel steel I-beams with external clamping, the traditional front card fixed structure cannot insert the rear card into the front card to achieve short tail material,this model's front card can be cut beyond the limit to achieve extremely short tail material, greatly reducing costs and increasing profits for customers.
- 4.Optional fully automatic or semi-automatic feeding rack.



| Model | Laser Power | X axis travel | Y axis travel | Z axis travel | Maximum acceleration | XY axis maximum speed |
|-----------|-------------------------|---------------|---------------|---------------|----------------------|-----------------------|
| DPE-D6012 | 1500w.2000w.3000w | 6200mm | 500mm | 200mm | 1.0G | 100m/min |
| DPE-D6016 | 1500w.2000w.3000w | 6200mm | 500mm | 200mm | 1.0G | 100m/min |
| DPE-D6024 | 1500w.2000w.3000w.6000W | 6200mm | 500mm | 200mm | 1.0G | 100m/min |
| DPE-D6036 | 3000w.6000w | 6200mm | 500mm | 200mm | 1.0G | 100m/min |

Chuck Horizontal Fiber Laser Tube Cutting Machine

1. Horizontal heavy-duty pipe cutting machine, with a heavier bed and smooth operation
2. Can be paired with fully automatic or semi-automatic feeding racks



| Model | Pipe length | Chuck size | Laser output power | Minimum cutting width | XY positioning accuracy | Maximum speed |
|-------------|---|------------|-------------------------|-----------------------|-------------------------|---------------|
| DP-E6012 | Circular tube diameter: 10-120×6500mm Square tube diameter: 10-120×6500mm Bearing 20KG/m, Full stroke chuck | 120mm | 1000W.1500W.2000W.3000W | 0.15mm | ±0.03mm | 130m/min |
| DP-E6012KJ | Circular tube diameter: 10-120×6500mm Square tube diameter: 10-105×6500mm Bearing 20KG/m, Full stroke chuck | 120mm | 1000W.1500W.2000W.3000W | 0.15mm | ±0.03mm | 130m/min |
| DP-E6016 | Circular tube diameter: 10-160×6500mm Square tube diameter: 10-160×6500mm Bearing 20KG/m, Full stroke chuck | 160mm | 1000W.1500W.2000W.3000W | 0.15mm | ±0.03mm | 110m/min |
| DPE-E6022 | Circular tube diameter: 10-220×6500mm Square tube diameter: 10-225×6500mm Bearing 25KG/m, Full stroke chuck | 220mm | 1000W.1500W.2000W.3000W | 0.15mm | ±0.03mm | 110m/min |
| DPE-E6022K | Circular tube diameter: 10-220×6500mm Square tube diameter: 10-150×6500mm Bearing 25KG/m, Full stroke chuck | 220mm | 1000W.1500W.2000W.3000W | 0.15mm | ±0.03mm | 110m/min |
| DPE-E6023KF | Circular tube diameter: 10-230×6500mm Square tube diameter: 10-230×6500mm Bearing 25KG/m, Full stroke chuck | 230mm | 1000W.1500W.2000W.3000W | 0.15mm | ±0.03mm | 110m/min |
| DPE-E6035K | Circular tube diameter: 25-350×6500mm Square tube diameter: 25-350×6500mm Bearing 60KG/m, Full stroke chuck | 350mm | 1500W.2000W.3000W.6000W | 0.15mm | ±0.03mm | 90m/min |

Three-chuck Heavy-duty Fiber Laser Tube Cutting Machine

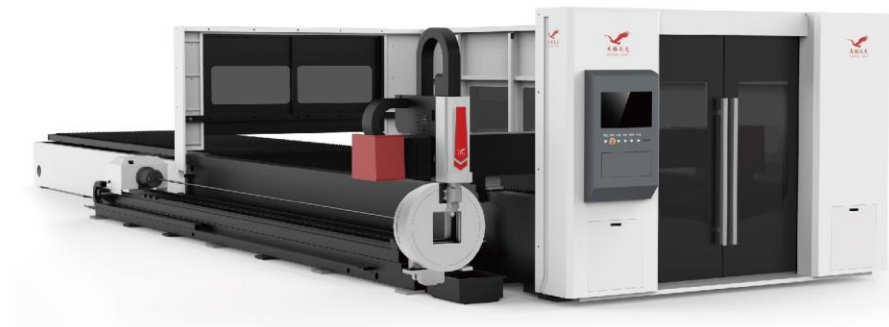
1. The chuck side-mounted design is convenient for loading and unloading materials
2. Add semi-automatic feeding racks to improve work efficiency and save labor
3. One machine is versatile and can cut round pipes, square pipes, H-beams, and other pipe materials



| Model | Scope of pipe processing | Laser output power | Y1 axis travel | Y2 axis travel | Y3 axis travel | X axis travel | Z axis travel |
|-----------------|---|--------------------|----------------|----------------|----------------|---------------|---------------|
| DPE-L6060-K22 | Trip: 6000mm,Bearing: 50KG/m Circular tube diameter: 10-220mm Square tube diameter: 10-150mm I-beam: 160×80mm | 3000W | 6060mm | 1500mm | 6060mm | 400mm | 900mm |
| DPE-L6060-K35 | Trip: 6000mm,Bearing: 100KG/m Circular tube diameter: 10-350mm Square tube diameter: 10-250mm I-beam: 280×140mm Big claw travels twice, small claw travels once | 6000W | 6060mm | 1500mm | 6060mm | 400mm | 900mm |
| DPE-L12060-K35 | Trip: 12000mm,Bearing: 100KG/m Circular tube diameter: 10-350mm Square tube diameter: 10-250mm I-beam: 280×140mm Big claw travels twice, small claw travels once | 6000W | 12060mm | 1500mm | 12060mm | 400mm | 900mm |
| DPE-L120120-K50 | Trip: 12000mm,Bearing: 150KG/m Circular tube diameter: 10-500mm Square tube diameter: 10-360mm I-beam: 360×200mm Big Claw 200-500 minutes with two trips A trip of 200 small claws | 6000W | 120129mm | 1500mm | 120120mm | 400mm | 900mm |

Plate And Tube Integrated Fiber Laser Cutting Machine

1. One machine can cut sheets and pipes, with rich functions
2. Heavy machine design ensures fast and stable cutting operation, high cutting accuracy



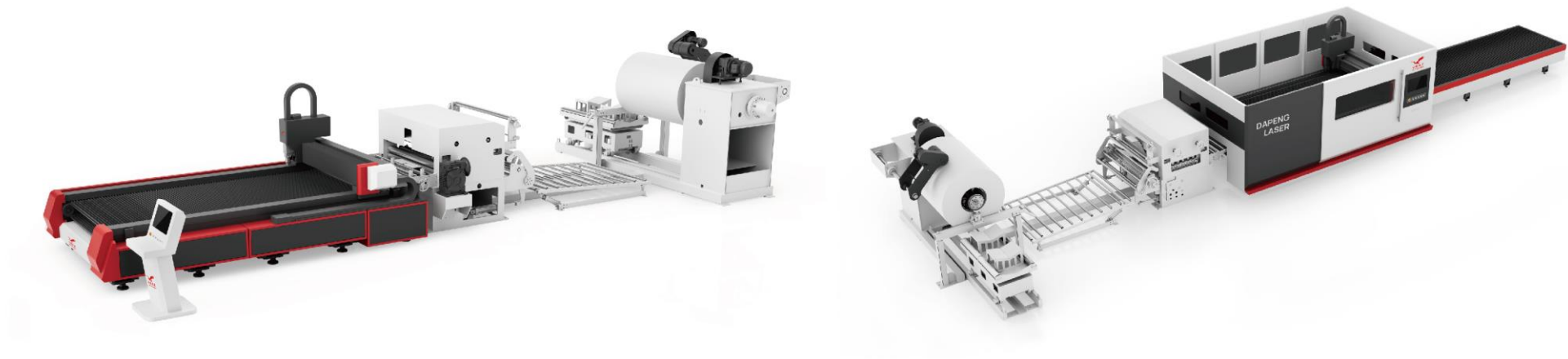
Flat cutting can be installed with F series, A series, CS series cutting machines

| Model | Chuck size | Cutting range |
|----------|---|--|
| BG-Q6012 | Equipped with 6-meter pneumatic 120 chuck | Length 6.5 meters, circular tube diameter 10-120mm Square tube diameter 10-120mm, load-bearing capacity 20KG/meter Full stroke chuck |
| BG-Q6016 | Equipped with 6-meter pneumatic 160 chuck | Length 6.5 meters, circular tube diameter 10-160mm Square tube diameter 10-160mm, load-bearing capacity 20KG/meter Full stroke chuck |
| BG-Q6022 | Equipped with 6-meter pneumatic 220 chuck | Length 6.5 meters, circular tube diameter 10-220mm Square tube diameter 10-220mm, load-bearing capacity 20KG/meter Full stroke chuck |

Coil Fiber Laser Cutting Machine

The unwinding, flattening, cutting, and cutting of metal materials are integrated into one, achieving automation in the feeding, transportation, cutting, and cutting of the entire roll of material, fully ensuring the high quality, high efficiency, and labor-saving advantages of material processing.

Integrating intelligent machinery with humans enables continuous and efficient production, while also shortening the production lead time of enterprise orders, making the enterprise more competitive in the market.



| Model | Cutting range | Laser output power | Maximum acceleration | Minimum slit width | X/Ypositioning accuracy | Maximum positioning speed | Machin size | Machine weight | Total weight |
|------------|---------------|--------------------|----------------------|--------------------|-------------------------|---------------------------|------------------|----------------|--------------|
| DPE-JP3016 | 3000x1600mm | 1500W.2000W.3000W | 1.2G | 0.15mm | ±0.03mm | 110m/min | 4606*2540*2030mm | 2095KG | 3700KG |

Precision Fiber Laser Cutting Machine

1. High precision machine tool with high cutting accuracy
2. Small size, saving space
3. Can be combined with visual positioning systems, fixtures, and other automation functions to improve production efficiency



Stator and rotor precision fiber laser cutting machine

| Model | Cutting range | Maximum acceleration | Laser output power | Minimum slit width | X/Ypositioning accuracy | Maximum positioning speed | Machin size | Total weight |
|-----------|---------------|----------------------|---|--------------------|-------------------------|---------------------------|------------------|--------------|
| DPE-D0606 | 600x600mm | 1.2G | 1000W.1500W.2000W.3000W QCW150-1500W.QCW300-3000W.QCW450-4500W | 0.15mm | ±0.003mm | 80m/min | 1430*1800*1800mm | 1400KG |

Linear precision fiber laser cutting machine

| Model | Cutting range | Maximum acceleration | Laser output power | Minimum slit width | X/Ypositioning accuracy | Maximum positioning speed | Machin size | Total weight |
|------------|---------------|----------------------|---|--------------------|-------------------------|---------------------------|------------------|--------------|
| DPE-D0606L | 600x600mm | 1.2G | 1000W.1500W.2000W.3000W QCW150-1500W.QCW300-3000W.QCW450-4500W | 0.15mm | ±0.003mm | 80m/min | 1820*1450*1780mm | 2000KG |

Screw precision fiber laser cutting machine

| Model | Cutting range | Maximum acceleration | Laser output power | Minimum slit width | X/Ypositioning accuracy | Maximum positioning speed | Machin size | Total weight |
|----------|---------------|----------------------|---|--------------------|-------------------------|---------------------------|------------------|--------------|
| DPE-0606 | 600x600mm | 0.8G | 1000W.1500W.2000W.3000W QCW150-1500W.QCW300-3000W.QCW450-4500W | 0.15mm | ±0.01mm | 80m/min | 1800*1829*1450mm | 2000KG |

Handheld fiber laser

DP LASER

Welding/Cleaning/5 in 1 Machine

HL series handheld fiber laser welding machine

DP LASER customized cabinets can be selected from Hanli, S&A, Quanguan, Bingyue cabinets etc

You can choose DP, SUP, Qilin, Raytools, RelFar, Ospri, Hanwei welding systems etc

We support customizing unique cabinets and OEM solutions for you



Equipment model

DP-HL1500/2000/3000/6000

Laser power

1500W/2000W/3000W/6000W

Laser source

IPG/MAX/Raycus/BWT

Electric Power

Less than 10KW

Cooling mode

Water Cooling

Laser wavelength

1064~1070NM

Laser wavelength

0~60HZ

Votlage

220V 50HZ 60HZ

Pulse width

0.1~20ms

Adjusted spot range

0.1~5MM

Optical Fiber

50um,10M

Continous Working Time

24 hours

Comllimation Length

F=50mm

Handheld Fiber Laser Welding/Cutting/Cleaning Solution

DP LASER



Air-cooled Handheld Laser Welding Machine

1. The welding system is more intelligent, with richer welding parameters and simpler operation
2. Small size, light weight, space saving, convenient to carry
3. Fearless of severe cold, can still work normally at minus 20 degrees Celsius
4. It has no chiller, so it can save electricity costs, and promote energy conservation and environmental protection



Fiber laser cleaning machine

DP LASER

LC-P Series Pulse Fiber Laser Cleaning Machine

1. Compared to traditional cleaning, it does not require chemical reagents and is environmentally friendly
2. The surface of the cleaned material and the substrate are hardly damaged
3. Almost no consumables, low usage cost, high efficiency



Cutting Robot

- 1.Three-dimensional intelligent control, high precision, fast speed and high efficiency
- 2.One machine with multiple functions, capable of cutting sheet metal, pipes and three-dimensional parts



Parameters

| Parameters | J-C/M1840-25 |
|---|--------------|
| Flexibility | 6-axis |
| Maximum Working Radius | 1840mm |
| Maximum Load | 25kg |
| Repeatability | ±0.08mm |
| Robot Weight | 260kg |
| Control Cabinet Weight | 80kg |
| Power | 4.5kw |
| Temperature | 0~45°C |
| Laser Power | 1000-6000W |
| Material (Carbon Steel,Stainless Steel) | 0.5-10mm |
| Applicable Material(Aluminum) | 0.5-8mm |

Welding Robot

Can work continuously 24 hours a day, tirelessly

High welding precision, fast speed and good welding quality consistency



Laser Welding Robot-Parameters

| Parameters | J-H/M1550-12 | J-H/M1840-25 | J-H/M2010-12 | J-H/F10-05 | J-H/F14-10 |
|--|--------------|--------------|--------------|------------|------------|
| Flexibility | 6-axis | 6-axis | 6-axis | 6-axis | 6-axis |
| Maximum Working Radius | 1550mm | 1840mm | 2010mm | 922mm | 1400 |
| Maximum Load | 12kg | 25kg | 12kg | 5kg | 10kg |
| Repeatability | ±0.05mm | ±0.08mm | ±0.08mm | ±0.02mm | ±0.05mm |
| Robot Weight | 170kg | 260kg | 185kg | 22kg | 40kg |
| Control Cabinet Weight | 60kg | 80kg | 60kg | / | / |
| Power | 4.5kw | 4.5kw | 4.5kw | 24V/1.5A | 24V/1.5A |
| Temperature | 0~45°C | 0~45°C | 0~45°C | 0~45°C | 0~45°C |
| Applicable Laser Power | 1000-3000W | 1000-6000W | 1000-3000W | 1000-3000W | 1000-3000W |
| Material (Carbon Steel, Stainless Steel) | 0.5-5mm | 0.5-10mm | 0.5-5mm | 0.5-5mm | 0.5-10mm |
| Applicable Material(Aluminum) | 0.5-4mm | 0.5-4mm | 0.5-4mm | 0.5-4mm | 0.5-8mm |

CNC bending machine

DP LASER

DMT Series CNC Bending Machine Down-acting Hybrid CNC Press Brake

DMT series has an all-steel welded construction, an efficient and reliable post-gauging system, and an automatic deflection compensation table for high versatility and customization.



CNC bending machine

DP LASER

FS Series CNC Bending Machine Full Electric Servo CNC Bending Machine

With servo motor drive, the processing efficiency is much better than traditional hydraulic bending machine, and no need to use hydraulic oil, environmental protection and pollution-free, to ensure that the bending angle error within $\pm 0.5\text{mm}$



CNC bending machine

DP LASER

UMT Series CNC Bending Machine Up-acting Hybrid CNC Press Brake



IPG FIBER LASER SOURCE



Models:

YLR-3000,YLR-6000,YLS-12000
YLS-20000,YLS-30000,YLS-60000

Output Power:

3000W/6000W/12000W/20000W/30000W/60000W

Wavelength, nm:

1070±5

Mode of Operation:

CW/Modulated

Used:

For Laser Cutting/Welding

MAX FIBER LASER SOURCE



Models:

MFSC-3000,MFSC-6000,MFSC-12000
MFMC-20000,MFMC-30000,MFMC-60000

Output Power:

3000W/6000W/12000W/20000W/30000W/60000W

Wavelength, nm:

1080±10

Mode of Operation:

CW/Modulated

Used:

For Laser Cutting/Welding

RAYCUS FIBER LASER SOURCE



Models:

RFL-C3000,RFL-C6000,RFL-C12000
RFL-C20000,RFL-C30000,RFL-C60000

Output Power:

3000W/6000W/12000W/20000W/30000W/60000W

Wavelength, nm:

1080±10

Mode of Operation:

CW/Modulated

Used:

For Laser Cutting/Welding

DPLASER



PRECITEC

BOCI



RAYTOOLS

OSPRI



DPLASER



★
FSCUT8000



★
DAIRUIKE CHUCK



★
HANLI CHILLER



★
YASKAWA SERVO

DPLASER



➤ Nozzle



➤ Ceramic Ring



➤ Precitec Protection Lens



➤ Precitec Collimating



➤ Precitec Focusing Lens



➤ Raytools Nozzle



➤ Raytools Protection Lens



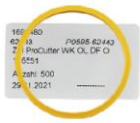
➤ Raytools Ceramic Ring



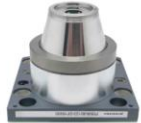
➤ Raytools Collimating Lens



➤ Raytools Focusing Lens



➤ Precitec Sealing Ring



➤ Precitec Sensor Head



➤ Precitec RF Cable



➤ Precitec QBH Connector



➤ Precitec Ceramic Ring



➤ Raytools Sealing Ring



➤ Raytools Sensor Head



➤ Raytools RF Cable



➤ Raytools QBH Connector



➤ Amplifier

DPLASER

DP LASER

SHENZHEN DAPENG LASER EQUIPMENT CO.,LTD

DP Laser Shenzhen Headquarters

- 📍 17-10B, 17-19 Building, Phase III, Taoyuan Garden, Industrial Eighth Road,
Yanshan Community, Nanshan District, Shenzhen ,China

SERVICE HOTLINE

Shenzhen China

Dongguan China

☎ +86 755-2683 1314

☎ +86 173 6263 5180

🌐 www.dplaser.cn

✉ info@dplaser.cn

Production Base in Guangdong Province

- 📍 Oumin Industrial Park, Yongjun Road, Shuilang Village, Dalingshan Town, Dongguan ,China

Production Base in Jiangsu Province

- 📍 123 Yongtong Road, Yongxing Street, Chongchuan District, Nantong City, Jiangsu ,China



SERVICE CENTER WECHAT