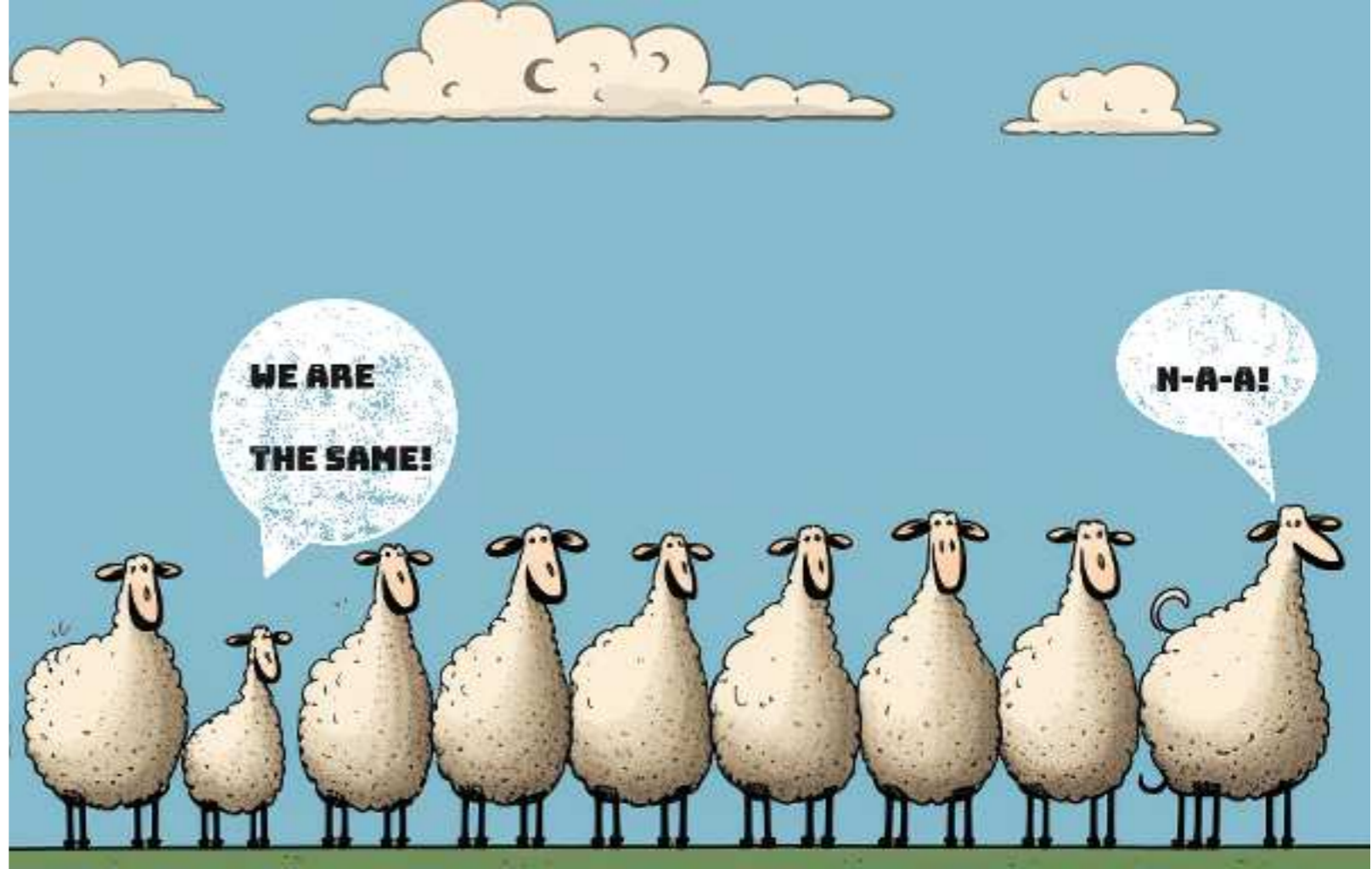


5 Things
High-stakes
Top winners
DO
Differently



JAYSER 1337
MASTER THE GAME

1. PRIORITIZE STUDY FOR MAXIMUM IMPACT



In poker, mastering the countless spots could be a lifetime's work. Yet, we all have the same limited hours for both play and study; it's all in the nuances. Consider Steve Jobs and a successful restaurant owner. Both may work 80-hour weeks, but their results differ immensely.

Similarly in poker, not all spots are created equal. For instance, the frequency of BLL (broadway-low-low) flops is 43 times more common than AAL (ace-ace-low). Dedicate 43 hours to studying the latter, and it equates to just one hour on BLL! Beyond frequencies, other factors affect our study approach: spot \$EV, complexity, exploit opportunities, etc.

Top players understand the formula, adopting study plans that set them miles apart from the competition.





2. DON'T COPYCAT SOLVER'S SOLUTIONS

As modern solvers become more and more convenient, it's tempting to rely solely on their outputs. However, be wary. Turn and river solutions expect perfect GTO play, but people don't always play that way.

While mastering GTO is crucial, simply copying it isn't sufficient (GL remembering everything!). Top regs understand how and why solver uses its strategies. They merge GTO principles with exploitative tactics, using strategy locks in solvers effectively to tackle diverse opponents and get the maximum EV from every situation.



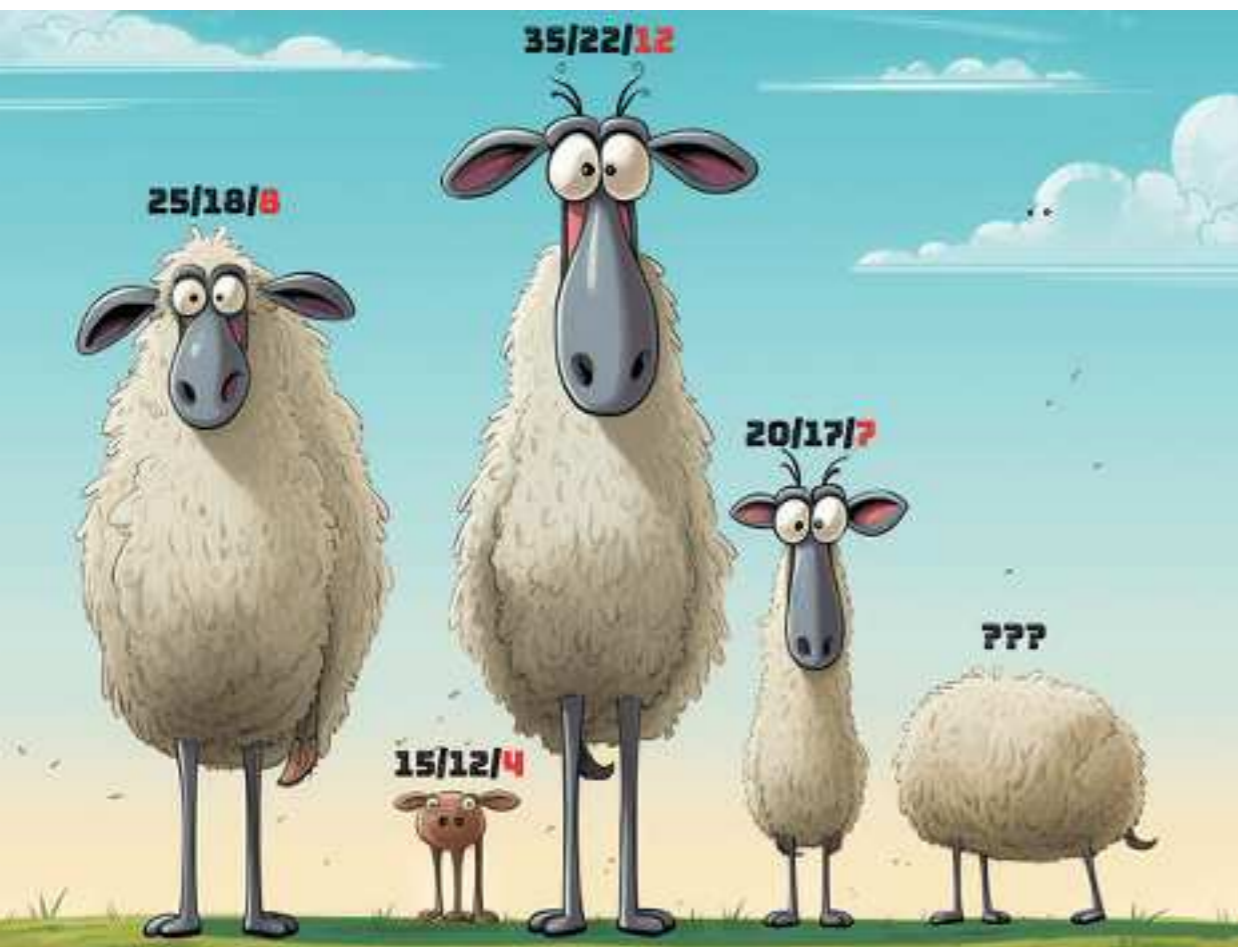
3. NAVIGATE IN THE NOISE OF USELESS DATA

I like to rephrase one quote: *"Many players use poker statistics like a drunken man uses a lamppost—for support, not illumination."*

Too often, I've seen students blindly trust field range research or make decisions based purely on stats. It's a minefield where missteps are costly. Here are some pitfalls to avoid:

- When researching ranges, consider different player profiles. Combining stats from an aggro reg, a TAG, and a nit can lead to misleading averages.
- Some platforms (like WPN) hide showdowns for lost hands. If you mix data from such sites, you'll get skewed results, notably underbluffs.
- Don't rely on limited data, and remember, players change strategies with the time. Solid reasoning comes first, stats come second.

Remember, HUDs and range research can be invaluable, but only when used correctly. Ensure you understand the nuances.



4. CHOOSE THEIR TRIBE WISELY

*"Show me your network
and I will tell you your net worth."*

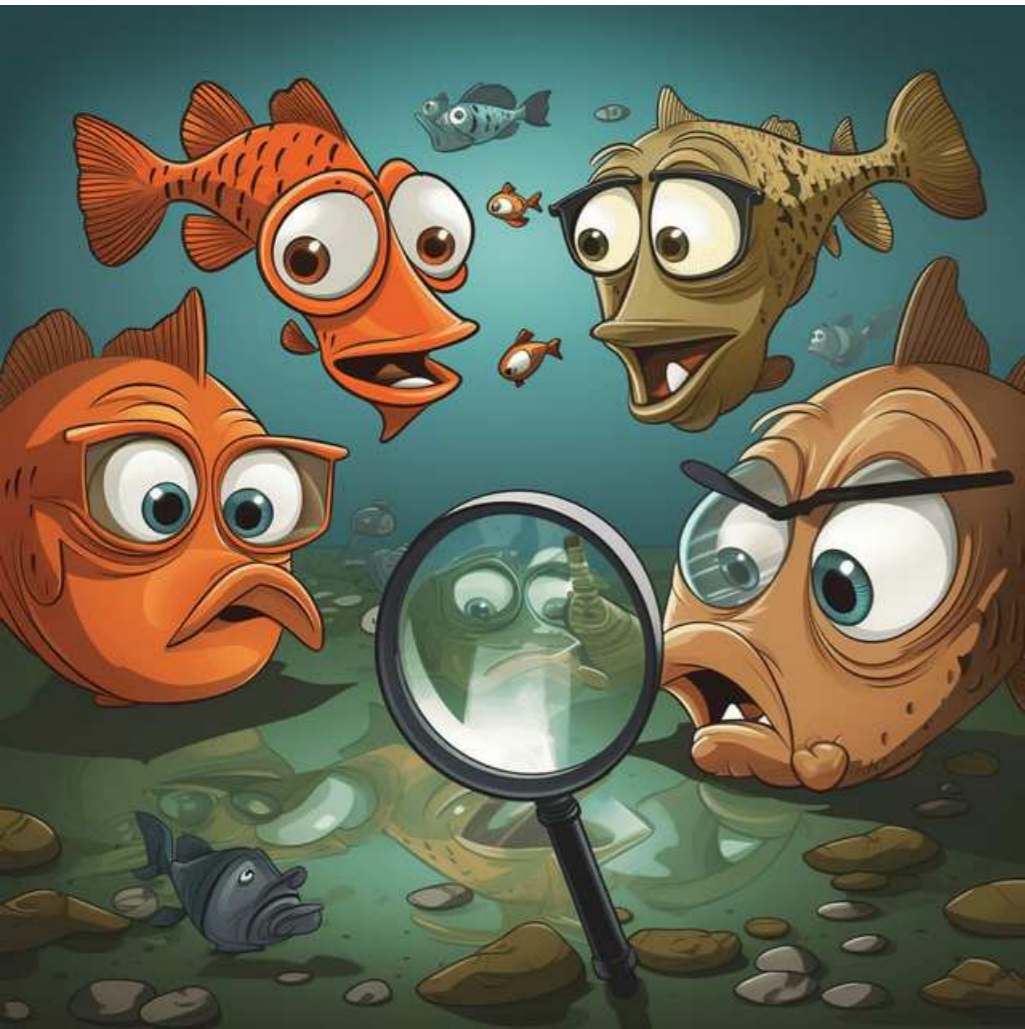
Let's keep it simple: you're the average of 5 people you spend most of your time with. It's not just about money or success; it's is equally applicable to happiness, values or mindset. Humans are social animals, and we subconsciously emulate those around us.

The most successful poker players realize this idea and surround themselves with people, whose goals and ambitions align. If you haven't found the right circle yet, immerse yourself in books, seek out role models, and continually grow both personally and as a player. Make your journey and ambitions known, and the right community will find you. The rewards of such a connection are immeasurable.



5. SQUEEZE THE MOST OUT OF FISH

High-stakes top winners know that there are limits in gaining an edge against other regulars in 6-max games. The difference between top-1 player and an average regular of the same stake could be around +5bb/100 after the rake. Now, compare it to a maximum edge against a recreational player, where the EV is measured in tens, sometimes in hundreds of BB/100!



Ever thought there some shared patterns in how most recreational players bluff or valuebet depending on the size they use and the type of board? Here are some interesting findings when fish is an aggressor in position:

- > if fish's barreling size *increases on blank* turn and river, he is extremely value heavy (only 5% bluffs over 70 samples)
- > if fish's turn barreling size *decreases on blank*, he is almost always bluffing (0% value over the similar sample)

Most regulars have never rigorously studied fish tendencies or ran a range research and just play a simplified strategy vs a few distinct types of recs without paying much attention, and the cost of it is huge!

We've only scratched the surface here, if you're interested to go deep, check out my coaching options by clicking [this link](#)

