



*The purpose of the Oklahoma Native Plant Society is to encourage the study, protection, propagation, appreciation and use of Oklahoma's native plants.*

Volume 21, Number3  
Autumn 2006

#### LOOK INSIDE FOR

PRESIDENT'S PARAGRAPH .....	2
IMPORTANT NOTICES .....	2
BOTANY BAY .....	2
CONSERVATION CORNER .....	3
COLOR OKLAHOMA .....	4
SILENT AUCTION .....	4
OFFICERS SLATE .....	5
BY-LAW PROPOSED CHANGES .....	6
PHOTO CONTEST NEWS .....	8
INDOOR-OUTING .....	8
CHAPTER ACTIVITIES .....	9
WELCOME NEW MEMBERS .....	9
MEMBERSHIP FORM .....	11

INSERT: Annual Meeting Registration

ONPS website: <http://www.usao.edu/~onps/>

Email: [chadwick.cox@cox.net](mailto:chadwick.cox@cox.net)

Printed on recycled paper

**COPY AND ART DEADLINE  
FOR NEXT ISSUE IS  
15 November 2006**

# Gaillardia

The Oklahoma Native Plant Society Newsletter

#### CALENDAR

Note: the events dated below are followed by either a page number for further descriptions or the contact person.

- Sept 9: Crosstimbers Chapter field trip to the Thomas' garden. Page 9.  
 Sept 11: NE Chapter Meeting with Kieth Owen. Page 8.  
 Sept 15-16: Bioblitz 2006 at Quartz Mountain Nature Park. For more information visit [www.biosurvey.ou.edu/biotiddly.html](http://www.biosurvey.ou.edu/biotiddly.html).  
 Sept 22: NE Chapter Happy Hour. Page 8.  
 Sept 23: NE Chapter field trip to Nickel Preserve. Page 9.  
 Oct 6: Annual Meeting at Sequoyah State Park. See insert and President's Paragraph.  
 Oct 20: NE Chapter Happy Hour. Page 8.  
 Oct 21: NE Chapter field trip to Birch Lake. Page 8.  
 Nov 3: Crosstimbers Chapter Potluck Dinner with Steve Owens speaking. Page 9.  
 Nov 3: Symposium honoring Dr. Paul Buck. See Botany Bay.  
 Feb 10: Indoor-Outing. Page 8.

Note: all members are invited to all meetings, including board meetings, and are encouraged to bring guests.

#### ONPS THANKS THESE DONORS

Harriet G. Barclay Fund

Mary Korthase

Anne W. Long Fund

Walker, Joan (Fellowship Congregational Church Thanks For Program)

Color Oklahoma Fund

Fredrick Berry

AEP Public Service Co. of OK

Mary Korthase

Kenyon J. Blunt, in Memory of Mr. & Mrs. Wittkopp  
 Bullseye Database Marketng, in Memory of Arnold & Augusta Wittkopp



**I hope you are making plans to attend the 2006 Annual Meeting the first weekend in October, the 6<sup>th</sup> and 7<sup>th</sup>, at Western Hills Guest Ranch in Sequoyah State Park. The reservation form is included as an insert in this issue of the *Gaillardia*. Please make your own reservations with Western Guest Ranch or, if you are camping, Sequoyah State Park. Phone numbers for both are included on the registration form. We have reserved a block of 20 rooms at the Lodge. Be sure to mention that you are with ONPS – if we fill the rooms, our meeting room is free. They are holding those rooms until September 15<sup>th</sup>. (After the 15<sup>th</sup>, if rooms are still available, they will still extend the reduced rates.)**

**We are most fortunate to have Russell Lawson, Associate Professor of History at Bacone College in Muskogee, as our speaker on Saturday evening. He will review his recent book, *The Land between the Rivers*, which recreates the ascent of the Arkansas River by English botanist Thomas Nuttall in 1819. Lawson used Nuttall's journal to capture the excitement, adventure and peril of early exploration through the Midwest and into the then wilderness of what is now Oklahoma. The book has been available at Barnes and Noble and Borders. It is available from the publisher, The University of Michigan Press. We will try to have some copies available at our book table at the Annual Meeting**

Thomas Nuttall should be familiar to many of you through the genera *Nuttallanthus*, toad flax, and *Nuttallia*, a former genus of *Mentzelia*, stickleaf. He is also to be found in various specific epithets, *nuttallii*, *nuttallianus*, and *nuttalliana*, as in: *Zigadenus nuttallii*, death camas; *Evolvulus nuttallianus*, Nuttall's Evolvulus; *Astragalus nuttallianus*, Nuttall's milkvetch; *Monolepis nuttalliana*, Nuttall's povertyweed; *Ptilimnium nuttallii*, Nuttall's mock bishop's-weed; *Desmodium nuttallii*, Nuttall's tick clover; *Callitriche nuttallii*, Nuttall's water star-wort. Some of these names were assigned by Asa Gray, the eminent botanist at Harvard and father of American botany.

**This meeting will be my ‘swan-song’ as president of ONPS. I would like to take this opportunity to thank you for allowing me to serve you and this organization for the last two years. They have been**

**See you in the woods and prairies around the state,**

தெரு தெரு தெரு தெரு தெரு தெரு தெரு தெரு

## IMPORTANT GENERAL NOTICES

**At the Annual Meeting we will vote on the officers for the next year and for some By-Law changes as indicated on page 5. Also there is a request for items for the silent auction that will be held at the Annual Meeting, see page 4.**

**Please note below the symposium for Paul Buck.**

ತುಂಬು ತುಂಬು ತುಂಬು ತುಂಬು ತುಂಬು ತುಂಬು ತುಂಬು ತುಂಬು

## BOTANY BAY - THE END

**Paul Buck will not be supplying us with his interesting articles. However, you can celebrate with him at the following symposium.**

**The symposium will be entitled: "The Natural History of Oklahoma: a Symposium Honoring Dr. Paul Buck." Several botanists have been asked to speak on various topics ranging from a talk by Dr. Ron Tyrl, "A Cavalcade of Oklahoma Botanists" to a talk by Dr. Estelle Levetin that will focus on her pollen work, including her early work with Paul. The Oklahoma Academy of Science Technical Meeting will be held Friday, November 3 at Rogers State University.**

**For health related reasons, Paul and LouAnn have moved from their home of more than 40 years into assisted living quarters. His email address remains the same and his new address is:**

**Paul and LouAnn Buck  
University Village #24-D  
8555 South Lewis Avenue  
Tulsa, OK 74137  
918.298.3612**

**The end of Botany Bay is a great loss for the Gaillardia and our readers. The Gaillardia has two purposes: firstly, keeping our readers abreast of what we have been doing and what they can**



participate in the future and secondly, imparting knowledge related to botany. Obviously, Paul's Botany Bay supplied much to this latter function.

I, surely speaking for all our members, am asking for one of our many botanists to step forward to write articles that are less technical than those in our Journal but with a botanical educational view. Even if no one is willing to take on the task of supplying four such articles per year, surely we can recruit a group of botanists to produce these articles. A review of many native plant society newsletters indicates that the most common articles of an educational bent are those describing a given species or elaborating on a botanical organ, function or principle.

I expect to be overwhelmed by volunteers.

၁၆၀၇၂၆၀၇၂၆၀၇၂၆၀၇၂၆၀၇၂၆၀၇၂၆၀၇၂၆

#### CONSERVATION CORNER

Chad Cox

The Oklahoma Chapter of the National Wildlife Federation sponsored a meeting of various organizations interested in conservation on July 6 to discuss the formation of a federation of these organizations to lobby for conservation programs within the Farm Bill. Farm Bill 2002 contained eight such programs, all directed toward conservation practices on private lands. The Federal Government reimburses the land owner for developing and, in some, maintaining the conservation efforts to varying levels, 50-100%. For example, Bill Brogden, owner of Brogden Ranch, said his ranch was enrolled in a program that had his ranch convert back to native grasses. After the period of his agreement, he has grazed buffalo exclusively, although that is not a requirement of the program.

As the Conservation Chairman, I attended the conference and when asked if ONPS would join in this federation, I declined until approval could be obtained. I emailed board members for approval, received a few affirmative comments, no negative replies and then told Andy McDaniels, President of Oklahoma Wildlife Federation that ONPS would serve on the steering committee. I will keep ONPS informed of the proposals from the steering committee in this column.

The Forest Service is proposing to change their policy related to restoration programs. They would

require that native plants be used. This immediately raises the question of the definition of native plants. In the proposal, native plants are defined as indigenous plants that have evolved in the ecosystem. The Emily Roberson, founder of the Native Plant Conservation Campaign, emailed out a request for members, ONPS is a member, to respond to the proposal's definition and the proposal to require natives. This I responded to stating that the definition was adequate as long as there was an understanding that the ecosystem is regional so that plants from the region would be used in restorations if available. I did state that if not available then the closest form could be used. My example was the American Chestnut, which if the specimens recently found turn out to be non resistant, that those trees being bred out to conserve the American genes versus those of the Chinese used to confer resistance could be used in restorations of areas that had contained American Chestnuts. Later, Emily emailed another report that indicated that people are advocating planting non natives in restoration areas. I would have more thoroughly expressed dissatisfaction with this suggestion had I known, but my reply did indicate that natives are required. The Forest Service stated they only wanted a single reply from anyone. A later request from Emily was forwarded to our botanists.

A couple of reports that have appeared recently do not pertain directly to plants but suggest we are not so environmentally friendly. Researchers at Columbia and Yale Universities devised the Environmental Performance Index which ranks nations on a composite of air, water, energy, biodiversity, and habitat qualities. USA ranked 28th, below Chile, Malaysia and Slovakia, out of 133 nations and 23rd out of 29 nations of similar wealth. New Zealand, then Sweden, had the best indexes. Another report indicated that the per-capita carbon dioxide emissions of US is much greater than other countries with similar per-capita GDP, except Luxembourg that has a 2/3 higher per-capita GDP. Sweden, among the wealthier countries, led the group with a per-capita emission of less than a third of that of the US but about the same per-capita GDP.

How has your rain been for the last few months? We received a decent rain the other day, the first in several weeks. It was one of those rains generated by heat driven column of more moist air rising from



the surface and reaching the cold air above. That is, a very small area received the rain and we happened to be the lucky ones this time. We missed several over this last month. Will this hit but mainly miss rain schedule continue?

Visit the website

[www.drought.unl.edu/dm/index.html](http://www.drought.unl.edu/dm/index.html). The site is devoted to covering the drought that now stricken the southwest and central U.S., including Oklahoma. According to the predictions from NOAA, which was linked from the above website, you can see we can not expect much relief,



at least through October. This prediction, if true, does not bode well for fall field trips to prairie areas. Not that it bodes well for much of anything else.

အဲဒီလို နေရာတွေမှာ နေရာတွေမှာ နေရာတွေမှာ နေရာတွေမှာ နေရာတွေမှာ

#### COLOR OKLAHOMA UPDATE

Kim Shannon

The Color Oklahoma Committee is pleased to announce our first recipients of the Color Oklahoma Wildflower Grant! We received 12 applications from cities, clubs and groups from around the state. Of the 12 applications, we selected 7 groups to award and they include Let Turley Bloom, Riverfield Country Day School, the City of Edmond, Hennessey 2010 Beautification, Piedmont Kiwanis Club, Lawton Beautiful, Inc. and Choctaw County Arts Council & Iris Garden Club. Selecting these groups was easy enough, but eliminating the other applicants was difficult. We want to see all of Oklahoma blooming with native wildflowers!

All members of the Color Oklahoma committee judged the grant applications with a predetermined list of criteria. Some of the items taken into consideration include site selection, presence or absence of weedy species on planting site, proximity of like plantings if any, number of acres to be planted, means of raising matching funds, species selected, and other factors. Each applicant was given a "grade" based on 100 points, the grades were averaged and each application was discussed at length. Based on a committee consensus, the 7 grant awardees were determined and notified. To see the actual application and its detailed instructions, go to [www.coloroklahoma.org](http://www.coloroklahoma.org).

The next step is the ordering of seed and the eventual fall planting at the determined sites with the expertise of ODOT. We are very pleased to be able to award 7 grants this year and we hope to be able to award even more next year. In the meantime, the annual renewals of Color Oklahoma tags, along with the many initial orders, have made this grant a reality!

အဲဒီလို နေရာတွေမှာ နေရာတွေမှာ နေရာတွေမှာ နေရာတွေမှာ နေရာတွေမှာ

#### AUCTION AT THE ANNUAL MEETING

Kim Shannon

Are you ready for the 2<sup>nd</sup> annual silent auction? We will be raising some general funds for the Oklahoma Native Plant Society with assistance from various businesses, members and friends of ONPS. My sources tell me that there will be another original painting from Ellen Shannon along with the second in a series of hooked wildflower pillows. If you'd like to donate an item for the silent auction or if you have a business contact that might be willing to donate an item, please notify Kim Shannon via email at [okpenstemon@cox.net](mailto:okpenstemon@cox.net) or at 918.697.3488. See you in October!

**The Officers will need to be elected at the next Annual Meeting  
See below for By-Law changes to also be approved**

**ONPS – Slate of Officers – 2006-2007**

<b>President</b>	<b>Kim Shannon</b>	5216 E. 41 <sup>st</sup> St. N Tulsa OK 74115-1318 918-425-0075 okpenstemon@cox.net
<b>Vice President</b>	<b>Gloria Caddell</b>	University of Central Oklahoma Dept. of Biology 100 N. University Dr. Edmond OK 73034 405-974-5827 (w) 405-396-2487 (h) gcaddell@ucok.edu
<b>Secretary</b>	<b>Lou Duke</b>	1312 Avondale Dr. Norman OK 73069 405-364-5630 (hm) 405-321-2370 (wk) duke6459@yahoo.com
<b>Treasurer</b>	<b>Mary Korthase</b>	3926 E. 33 <sup>rd</sup> St. Tulsa OK 74135-1643 918-743-2743 mkorthase@sbcglobal.net
<b>Historian</b>	<b>Sharon McCain</b>	12621 S. Mustang Rd. Mustang, OK 73064 405-376-2768 sndmccain@aol.com
<b>Directors-at-Large</b>	<b>Monica Macklin</b>	1411 Sterling St. Ft. Gibson OK 74434 918-478-3685 (h) 918-456-5511, ext. 3831 (w) macklin@nsuok.edu
	<b>Stan Rice</b>	Southeastern OK State University Dept. of Biological Sciences 234 Biological Sciences Durant, OK 74701 580-745-2688 srice@sosu.edu



	2002-03	2003-04	2004-05	2005-06	2006-07	2007-08
Paul Buck	2 <sup>nd</sup> year	3 <sup>rd</sup> year	4 <sup>th</sup> year	5 <sup>th</sup> year	6th year	
Lynn Michael				1st year	2nd year	
Ron Tyrl				1 <sup>st</sup> year	2nd year	
Elfriede Miller	replacement	3 <sup>rd</sup> year	4 <sup>th</sup> year	5 <sup>th</sup> year	6th year	
Monica Macklin		1 <sup>st</sup> year	2 <sup>nd</sup> year	3 <sup>rd</sup> year	4th year	
Stan Rice		1 <sup>st</sup> year	2 <sup>nd</sup> year	3 <sup>rd</sup> year	4th year	

**THE FOLLOWING CHANGES TO ONPS BY-LAWS WILL BE PRESENTED TO THE GENERAL MEMBERSHIP FOR ADOPTION DURING THE OCTOBER 2006 ANNUAL MEETING. PLEASE READ THE PROPOSED CHANGES AND COME PREPARED TO VOTE. YOU CAN FIND THE CURRENT BY-LAWS ON THE ONPS WEB SITE AT <http://www.usao.edu/~onps/ONPS%20By-Laws.pdf>.**

- #1: Article V, Section 1 - restructured to define Executive Board and reflect elected and non-elected officers.**

**THE EXECUTIVE BOARD SHALL COMPRISE THE PRESIDENT, VICE PRESIDENT, SECRETARY, TREASURER, CHAPTER REPRESENTATIVES, COMMITTEE CHAIRS, DIRECTORS-AT-LARGE, HISTORIAN, LIBRARIAN, GAILLARDIA EDITOR, JOURNAL EDITOR AND MEMBERSHIP COORDINATOR. THE IMMEDIATE PAST-PRESIDENT SHALL BE AN EX-OFFICIO AND VOTING MEMBER.**

**OFFICERS**

**A: ELECTED**

**THE ELECTED OFFICERS OF THE EXECUTIVE BOARD ARE THE PRESIDENT, VICE-PRESIDENT, SECRETARY, TREASURER, AND SIX DIRECTORS-AT-LARGE. ALL BUT THE DIRECTORS-AT-LARGE SHALL BE ELECTED FOR A TERM OF ONE YEAR AND SHALL SERVE UNTIL HIS OR HER SUCCESSOR HAS BEEN ELECTED AND HAS ASSUMED THE OFFICE. THE PRESIDENT SHALL SERVE NO MORE THAN TWO CONSECUTIVE TERMS. DIRECTORS-AT-LARGE SHALL SERVE THREE-YEAR TERMS, TWO BEING ELECTED EACH YEAR TO PROVIDE CONTINUITY. NO ELECTED OFFICER, WITH THE EXCEPTION OF THE TREASURER, SHALL SERVE IN A VOTING CAPACITY FOR MORE THAN EIGHT CONSECUTIVE YEARS ON THE EXECUTIVE BOARD.**

- #2: Article V, Section 1 B - Office of Membership Coordinator created.**

**B: NON-ELECTED**

**THE NON-ELECTED OFFICERS TO THE EXECUTIVE BOARD ARE THE COMMITTEE CHAIRS, CHAPTER REPRESENTATIVES, HISTORIAN, LIBRARIAN, GAILLARDIA EDITOR, JOURNAL EDITOR AND MEMBERSHIP COORDINATOR. ALL, WITH THE EXCEPTION OF THE CHAPTER REPRESENTATIVES SHALL BE APPOINTED BY THE PRESIDENT AND CONFIRMED BY THE EXECUTIVE BOARD. EACH SHALL SERVE AT THE PLEASURE OF THE EXECUTIVE BOARD.**

- #3: Article V, Section 4 - Duties of Secretary changed.**

**The Secretary shall keep the minutes of all meetings of the Executive Board and the Society. ~~DELETE - maintain a roster of active members and perform other recognized duties.~~**

- #4: Article V, Section 5 - Duties of Membership Coordinator added.**

**THE MEMBERSHIP COORDINATOR SHALL MAINTAIN A ROSTER OF ACTIVE MEMBERS AND**

PERFORM OTHER ASSIGNED DUTIES.

#5: Article V, Section 6 - Auditing requirement added to Treasurers duties.

THE TREASURER SHALL MAKE ALL RECORDS AVAILABLE WHEN REQUESTED FOR THE PURPOSE OF EXAMINATION BY AUDIT COMMITTEE APPOINTED BY THE EXECUTIVE BOARD.

#6: Article VI Sections 2, 3, 4, 5, 6, 7- Reworking of governing body language.

Section 2: The Executive Board shall meet at least once each year.

DELETE: The Executive Board shall consist of the elected officers of the Society, Directors at Large, Chairs of standing committees, and representatives of chapters, with the immediate Past-President as an ex-officio and voting member.

Section 3: Meetings of the Executive Board may be called by the President or, in the absence or inability of the President, by the Vice-President. In the absence of presidential action, a special meeting of the Executive Board may be called by a majority of the Executive Board members. Adequate notification of the date, time, place, and purpose of the meeting shall be given to each Board member at least two weeks prior to the meeting.

DELETE: The Executive Board shall meet at least once a year.

Section 4: The presence of a majority of the Executive Board at a Board meeting shall be necessary to constitute a quorum for the transaction of business. Every act or decision by a majority of those present shall be regarded as a valid act of the Executive Board.

DELETE: Meetings of the Executive Board may be called by the President or, in the absence or inability of the President, by the Vice-President. In the absence of presidential action, a special meeting of the Executive Board may be called by a majority of the Executive Board members. Adequate notification of the date, time, place, and purpose of the meeting shall be given to each Board member at least two weeks prior to the meeting.

Section 5: The Chair of a standing committee may authorize a member of that committee to attend an Executive Board meeting and cast the committee vote.

DELETE: The presence of a majority of the Executive Board at a Board meeting shall be necessary to constitute a quorum for the transaction of business. Every act or decision by a majority of those present shall be regarded as a valid act of the Executive Board.

Section 6: The Executive Committee shall be composed of the President, Vice-President, Secretary and Treasurer. In the event of the extended absence of an officer of the Board, a qualified replacement shall be appointed to the Executive Committee by the Board. An Executive Committee meeting may be called by the President or requested of the President via written communication from any member of the Committee. The Executive Committee shall be empowered to take only procedural actions or obligate the Society to financial expenditures of less than \$100. Substantive decisions and financial obligations in excess of \$100 require action by the Executive Board. The President shall keep, or cause to be kept, accurate records of all actions taken at a meeting of the Executive Committee and shall report these actions to all members of the Executive Board within fourteen (14) days of the meeting.

DELETE: The Chair of a standing committee may authorize a member of that committee to attend an Executive Board meeting and cast the committee vote.

DELETE: Section 7: The Executive Committee shall be composed of the President, Vice-President, Secretary and Treasurer. In the event of the extended absence of an officer of the Board, a qualified replacement shall be appointed to the Executive Committee by the Board. An Executive Committee meeting may be called by the President or requested of the President via written communication from any member of the Committee. The Executive Committee shall be empowered to take only procedural actions or obligate the Society to financial expenditures of less than \$100. Substantive decisions and financial obligations in excess of \$100 require action by the Executive Board.

#7: Article XII, Section 1 - Fiscal year changed.

THE FISCAL YEAR OF THE SOCIETY SHALL BE FROM NOVEMBER 1 TO OCTOBER 31.



## PHOTO CONTEST NEWS

## Tina Julich

**Get your cameras ready! At the June meeting, ONPS board members decided to add another category to the photo contest to generate interest and promote the educational aspect of the photo contest. This new category will be called the “Specialty” category, and each year the category subject will change. The new category for the 2007 photo contest will be graminoids. The prizes for this category will be: 1<sup>st</sup> place - \$50.00, 2<sup>nd</sup> place - \$25.00 and 3<sup>rd</sup> place - \$15.00.**

**Don't know what a graminoid is? Do a bit of research, search for them, and then take your best photos! The deadline for the 2007 contest is December 1, 2006. Check our web site for more information.**

**தெரு தெரு தெரு தெரு தெரு தெரு தெரு தெரு**

## ONPS INDOOR OUTING 2007

## Paul Richardson

**The Crosstimbers Chapter will host the 2007 Indoor Outing on February 10, 2007 at the Oklahoma Botanical Garden and Arboretum in Stillwater. The theme will be a combination of natural history and centennial celebration. We plan to present what the early travelers to this area found prior to the relocation of the Five Civilized Tribes to Oklahoma. We will use materials provided by Washington Irving, Henry Leavitt Ellsworth and Charles Joseph Latrobe in their journals and letters from their tour of the area in 1832. We also want to present what the early settlers found in the period from 1899 to 1907. As the finale, we wish to show which of the early grasses, trees and other flora are still represented in Oklahoma and which have been lost to us. If weather permits, we plan a short trip around the gardens before breaking for lunch. After lunch we can take a trip to the Washington Irving Trail Museum, six miles east of Stillwater, where we can enjoy their displays indoors or take a short walk to the springs located in the Cross Timbers ecosystem on the property. This is your opportunity to be part of the program or to assist us in finding materials and speakers for the presentations. Please contact Paul Richardson (405-377-4831 or speedy154@juno.com) before early October if you would like to help plan this program.**

## CHAPTER ACTIVITIES

## Northeast Chapter

## Sue Amstutz

**Northeast Chapter will welcome Keith Owen as our speaker on September 11 at the Tulsa Garden Center. Keith is District Manager of the Rogers County Conservation District and as such, is responsible for the educational programs at Rogers State University Conservation Education Reserve in Claremore. Northeast Chapter has had two field trips to the Reserve, one in 2005 and the other in June of this year. Keith and his co-manager Robert Gibbs have been displaying ONPS Photo Contest Posters at the Reserve and also at the Conservation District Office in downtown Claremore for the past two years. The September meeting will begin, as usual, with a potluck dinner at 6:00 p.m., followed by a short business meeting and the program.**

**Other events for Northeast Chapter scheduled in September include our monthly Happy Hour at Panera Bread on East 41st Street, and a field trip to the Nickel Preserve in eastern Oklahoma. on September 23. It has been three years already since the Annual Meeting of ONPS incorporated a visit to the Nickel Preserve as its featured field trip, and we anticipate many changes and improvements since that earlier field excursion. Participants will meet at the Preserve's Visitor Center at 9:45 a.m. with the explorations set to begin at around 10:00 a.m.**

**Northeast Chapter has two events scheduled for October, besides, of course, our participation in the 2006 Annual Meeting of the Society at Western Hills Lodge in Sequoyah State Park. A field trip to Birch Lake in Osage County near Barnsdall is planned for Saturday, October 21, and our Happy Hour for the month will take place on Friday, October 20 at Panera. November's Happy Hour is scheduled for November 17.**

**Fall field trips will conclude for 2006 on November 18 when we visit the Deep Fork Wildlife Refuge boardwalk nature trail in Okmulgee County. Autumn foliage and migratory waterfowl are expected to be highlights of the area. Participants plan to caravan to the boardwalk from Schuler, Oklahoma, which is located on US Highway 75 south of Okmulgee at 1:00 p.m.**



**Crosstimbers Chapter Report**  
**Elaine Lynch**

Dr. Jim Ownby opened his native prairie garden to us on June 24<sup>th</sup>. This was a return trip for Crosstimbers members as we had the opportunity to view the fall flowering natives last September. On this trip we were able to see some of the early summer flowers. Dr. Ownby conducted our tour and discussed the effects of the drought on the plants, including later flowering of big bluestem and switchgrass. He distributed a summer and fall plant list indicating which plants were already there when he began to make the garden and which ones were introduced. The list also showed each plant's "Desirability Index" based on how they behaved in his garden. It was an interesting and enjoyable morning.

The Crosstimbers Chapter will visit the home garden of Olen and Teresa Thomas on Saturday, September 9. We will meet by 9:00 a.m. in the parking lot between Life Sciences East and Physical Sciences buildings on the Stillwater OSU campus and carpool to the Thomas home. The trip should last about two hours. Refreshments will be served. The trip will be canceled in the event of torrential rain at start time.

Our fall potluck dinner is scheduled for Friday, November 3, at 6:00 p.m. Our speaker will be Steve Owens, owner of Bustani Plant Farm and current host of Oklahoma Gardening. His talk will be titled "A Few Natives to Know." During his presentation he will discuss some of his favorite native plants and bring us up-to-date on the progress of his nursery. The potluck will be held in Room 110 Life Sciences East on the OSU campus. We will also hold a short business meeting to elect officers and discuss future activities.

The Crosstimbers Chapter is hosting the 2007 Indoor Outing. It will be held at the Oklahoma Botanical Garden and Arboretum in Stillwater on February 10. See the related article on page 8.

**Central Chapter**  
**Lou Duke**

Central Chapter conducted one field trip in June to the Lexington Wildlife Management Area. Twelve members hit the trail at 9am on Saturday June 17<sup>th</sup> to walk 1.5 miles through oak and cedar woods and a nice piece of short-grass prairie. The group then took to their cars and drove the central road where some of the healthiest stands of compassplant (*Silphium laciniatum*) found in this part of the state were located. Over 70 species of flowers, grasses and vines were identified with great opportunities for photos. Everyone had a great botanical experience.

Central Chapter held an indoor meeting July 31<sup>st</sup> at the OSU Extension Center in Oklahoma City. Linda Schemmer and Marilyn Stewart presented 'Butterfly Gardening with Native Plants. There were lots of *great* tips for attracting and raising butterflies and several different caterpillars to see as well as door prizes for the attendees.

Central Chapter has nothing on the calendar for the coming quarter. However, to the great relief of ONPS members the Manning Prairie still exists!! I have contacted Joe Manning and he is contemplating a date for our membership to visit his land. NOTHING IS FIRM YET but a mailing will go out to everyone when and if we get a date.

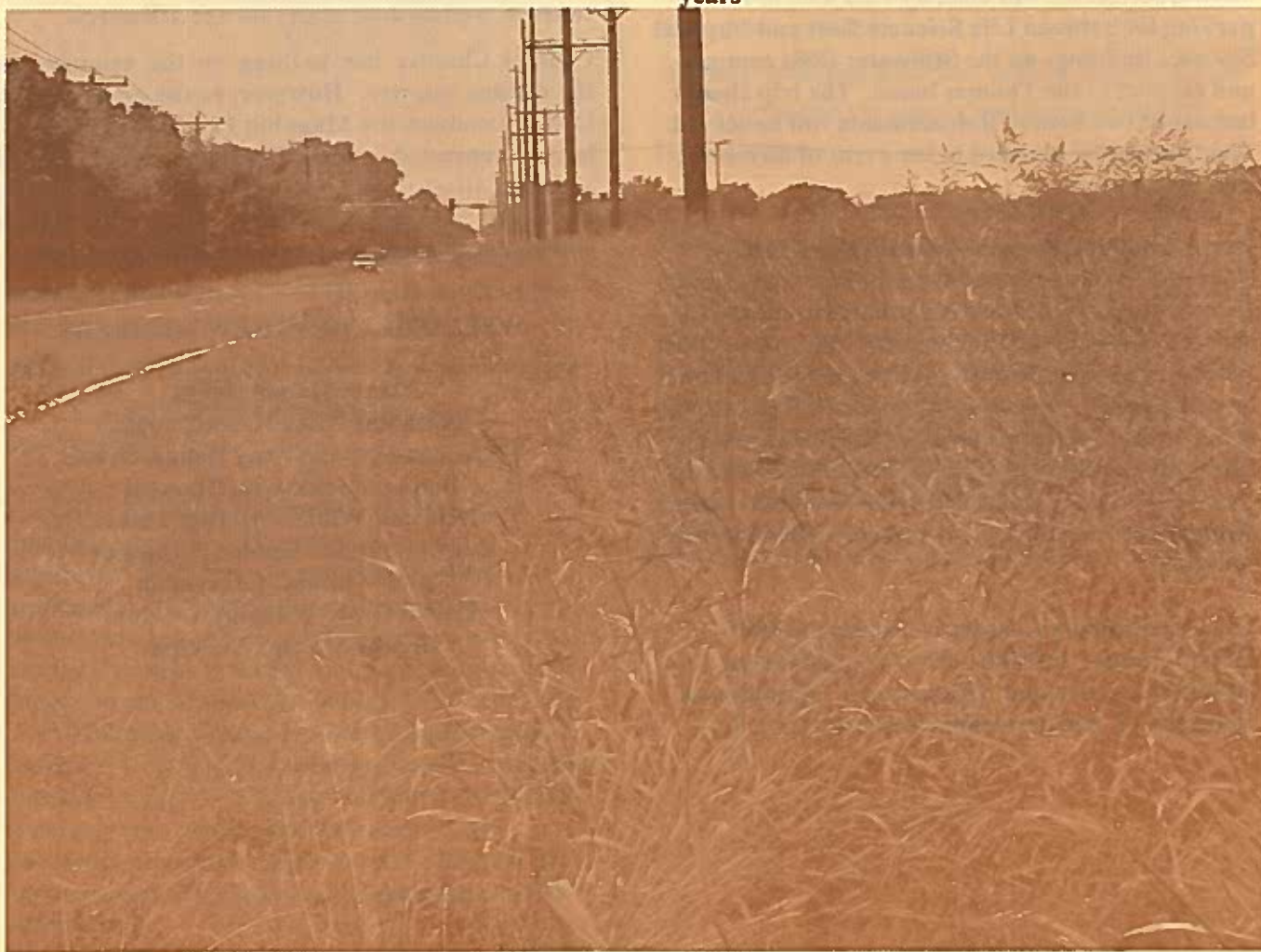
**WELCOME THESE NEW MEMBERS**

Nancy Hamill, Jenks  
Sarah and Mike Hansel, Tulsa  
Dave, Beverly, and Troy Helms, Grove  
Donna Mackiewicz, Edmond  
Gala and William McBee, Tulsa  
Doug and Nelda Sander, Stillwater  
Carol Whitney, Gracemont  
Calvin Craig Williams, Lawton  
Dempsey Yates, Sapulpa





As part of a program to publicize our non native invasive plant list for Oklahoma, I have presented talks to a Oklahoma Wildlife Federation's wildflower workshop and to the Optimist Club of Lawton. At both, I have stressed the threat of having invasive plants supplanting native species. The following is an example. When I moved Norman 22 years ago the ditch line on Franklin Road was covered by clasp-leaved coneflowers. Over a few years Johnson grass took over the area as shown in the picture below. Now this ditch line is filled with Johnson grass for several miles in each direction. In fact, the Johnson grass also displaced the poisonous hemlock that spread from a creek into this ditch line in the next mile west, a dubious invasive for invasive swap. A portion of the credit for the takeover of both these areas can be attributed to the mowing practice. The hotter, drier weather certainly aided the displacement of the hemlock which occurred in just the last two years





# Do you like native wildflowers? So do we!



Join the Oklahoma Native Plant Society today!

ONPS will celebrate its 20th anniversary in 2007 and we invite you to come see the state and its floral diversity with us. There is a Chapter near you that offers regular meetings and field trips and there are statewide meetings and workshops throughout the year. Membership includes a subscription to our quarterly newsletter, the *Gaillardia*, notification of related meetings and workshops, and good times with your fellow native plant enthusiasts!



See our website: <http://www.usao.edu/~onps/index.html>

*"to encourage the study, protection, use and appreciation  
of the native plants of Oklahoma"*

**Join the Oklahoma  
Native Plant Society  
today!**

Please complete this form and mail it  
with your check to:

Oklahoma Native Plant Society  
c/o Tulsa Garden Center  
2436 South Peoria Avenue  
Tulsa, OK 74114

## MEMBERSHIP INFORMATION

Name \_\_\_\_\_  
Address \_\_\_\_\_  
\_\_\_\_\_   
Email \_\_\_\_\_  
Phone \_\_\_\_\_

<input type="checkbox"/> Student	\$5.00
<input type="checkbox"/> Individual	\$15.00
<input type="checkbox"/> Family	\$20.00
<input type="checkbox"/> Life Individual	\$250.00
<input type="checkbox"/> Life Family	\$350.00

Make checks payable  
to ONPS  
Please select your local  
Chapter(s)

☐ Central Chapter (OKC area) ☐ Cross Timbers Chapter (Stillwater) ☐ Northeast Chapter (Tulsa) ☐ Mycology Chapter (statewide)

ONPS is a non-profit 501(c)(3) organization and all contributions are tax deductible



***The Gaillardia***

Published quarterly by the  
Oklahoma Native Plant Society  
2435 S. Peoria, Tulsa OK 74114

President Connie Murray  
Vice-president Kim Shannon  
Secretaries Lou Duke & Tina Julich  
Treasurer Mary Korthase  
Historian Sharon McCain

Directors at Large:  
2006: Monica Macklin and Stan Rice  
2007: Paul Buck and Elfriede Miller  
2008: Ron Tyrl and Lynn Michael

Chapter Chairs:  
Sue Amstutz Northeast  
Marilyn Stewart Central  
Paul Richardson Crosstimbers  
Clark Ovrebo Mycology

*Gaillardia* articles, except those reprinted here with permission from other sources, may be reprinted at will. Please acknowledge source and author.

Send all mail except contributions to the *Gaillardia* to:

Oklahoma Native Plant Society  
c/o Tulsa Garden Center  
2435 South Peoria  
Tulsa, OK 74114

For *Gaillardia* material only, use the editor's address:

Chad Cox  
2241 Ravenwood  
Norman, OK 73071-7427  
(405)-329-8860  
Email: [chadwick.cox@cox.net](mailto:chadwick.cox@cox.net)

- All material accepted is with the understanding that it can be freely copied.
- Submit as txt, rtf or word files by disc or email.
- If submitted by hard copy, use Times New Roman or other standard font types for OCR.

Members who wish to receive information by email from ONPS may send their on-line address to [chadwick.cox@cox.net](mailto:chadwick.cox@cox.net).

Oklahoma Native Plant Society  
c/o Tulsa Garden Center  
2435 South Peoria  
Tulsa, Oklahoma 74114

IF YOU HAVE NOT PAID YOUR  
2006 DUES PLEASE DO BEFORE  
WE SEND YOU A REMINDER

Non-Profit  
U. S. Postage Paid  
Tulsa, Oklahoma  
Permit No. 357