

Transferring Cloud Files to daDetective

See our [Online Reference Guide](#)

Learn about our [White Glove Upload Service](#)

1) Click the Cloud Access Utility for your provider:

[Google Drive](#)

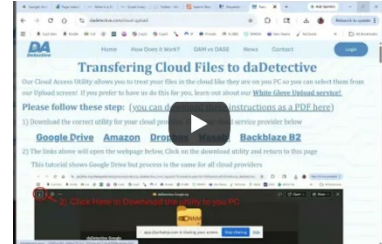
[Dropbox](#)

[Amazon S3](#)

[Wasabi](#)

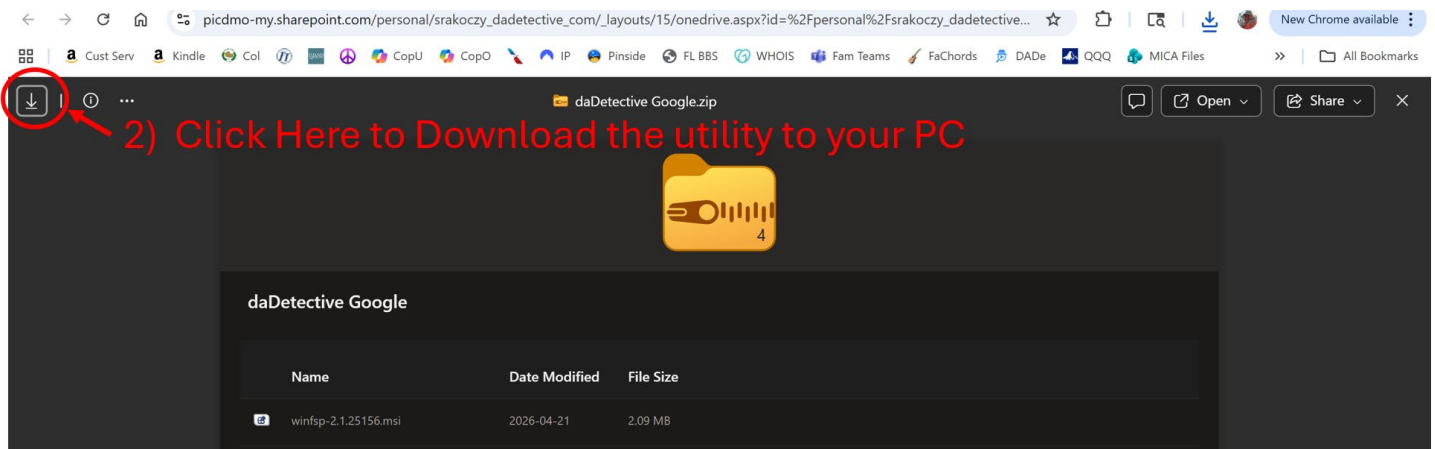
[Backblaze B2](#)

Watch Demo Video →



2) This will open the screen below, Click the **“Download”** icon.

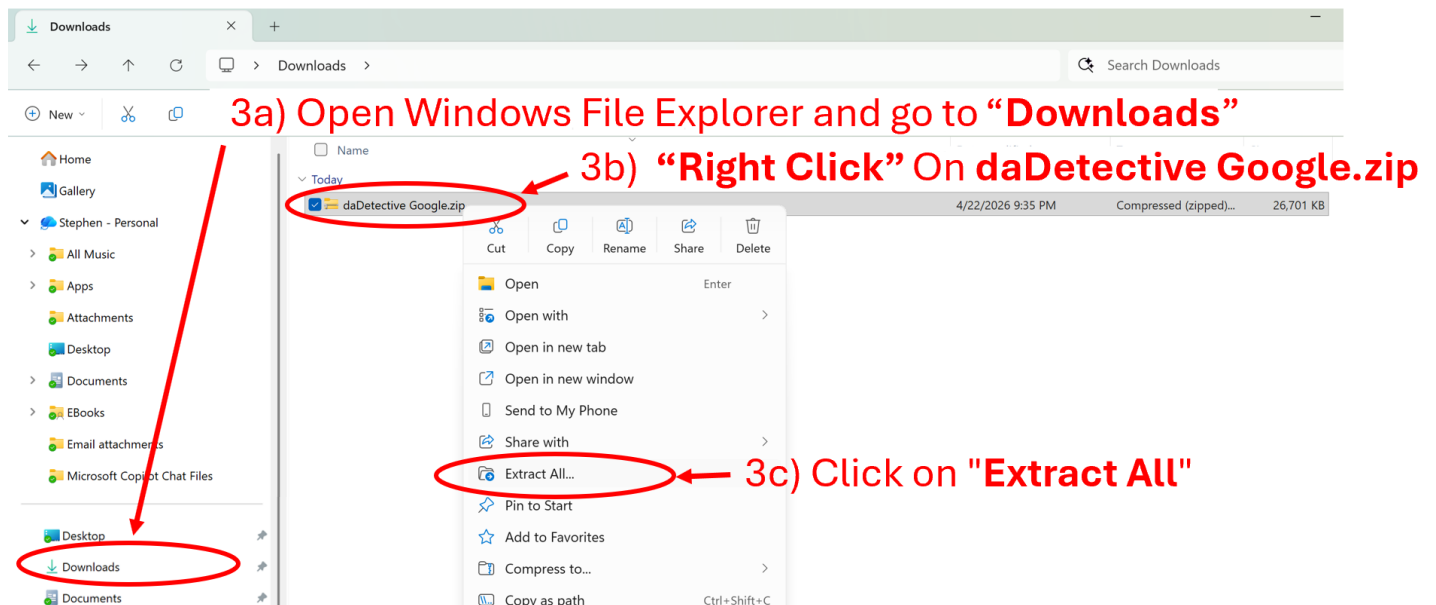
This tutorial shows Google Drive but process is the same for all cloud providers



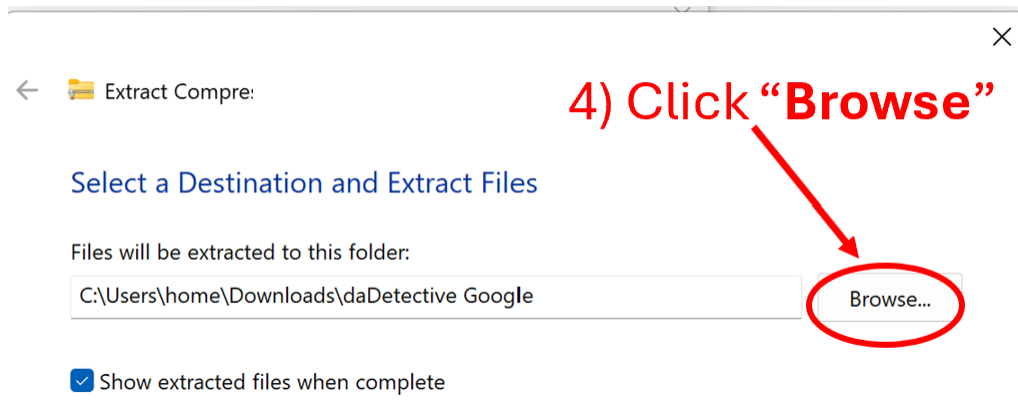
3a) Open Windows File Explorer and go to **“Downloads”**

3b) **“Right Click”** on **daDetective Google.zip** (or daDetective Dropbox.zip etc)

3c) Click on **“Extract All”**

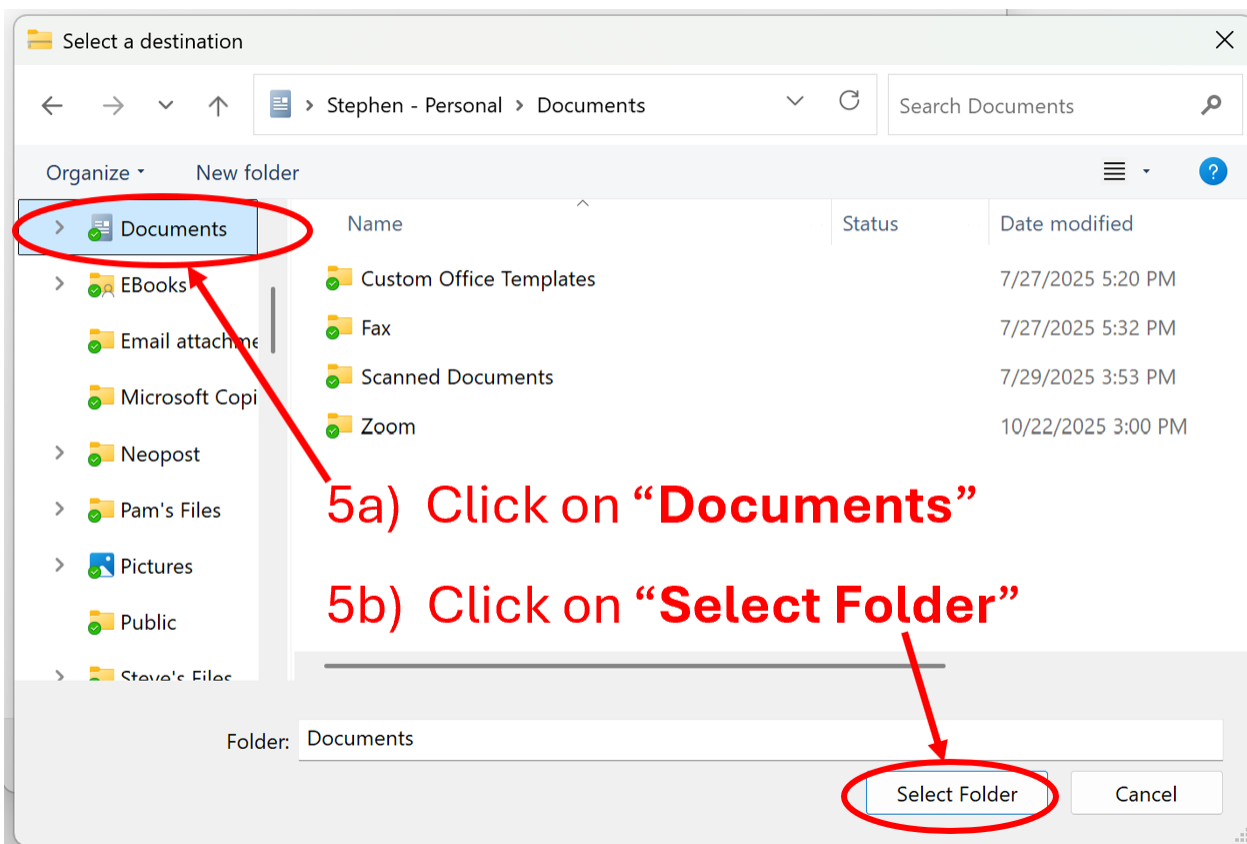


4) Click "**Browse**"



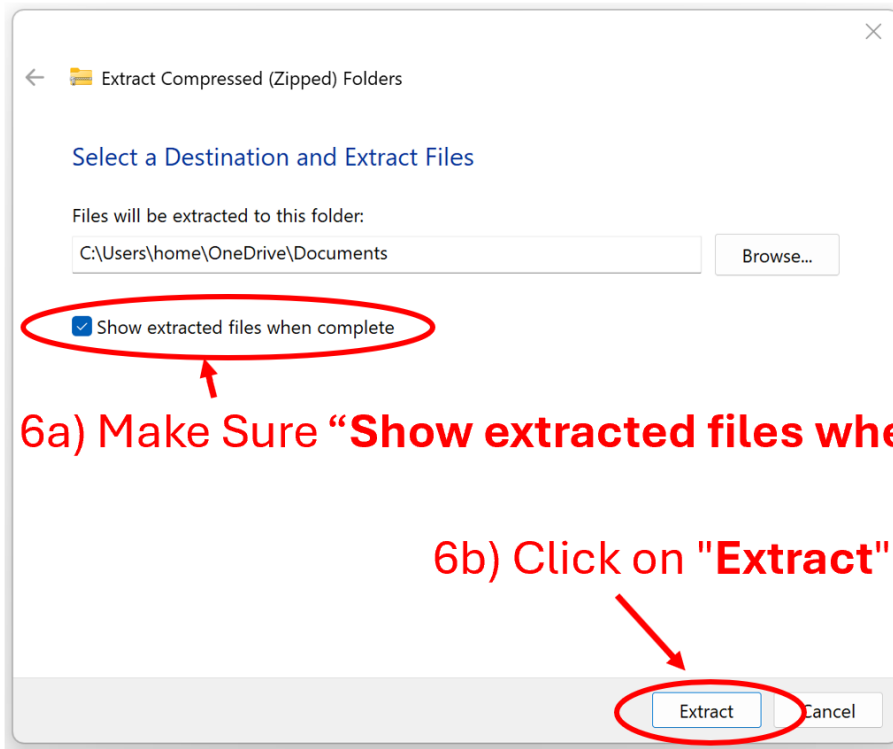
5a) Click on "**Documents**"

5b) Click on "**Select Folder**"

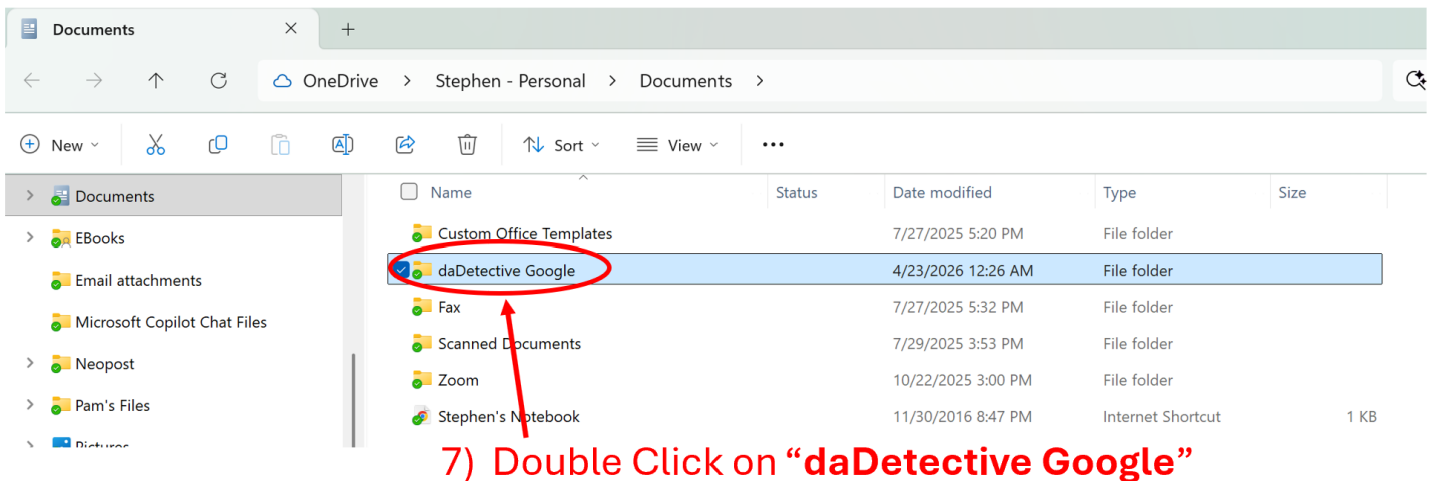


6a) Make Sure **“Show extracted file when complete”** is checked

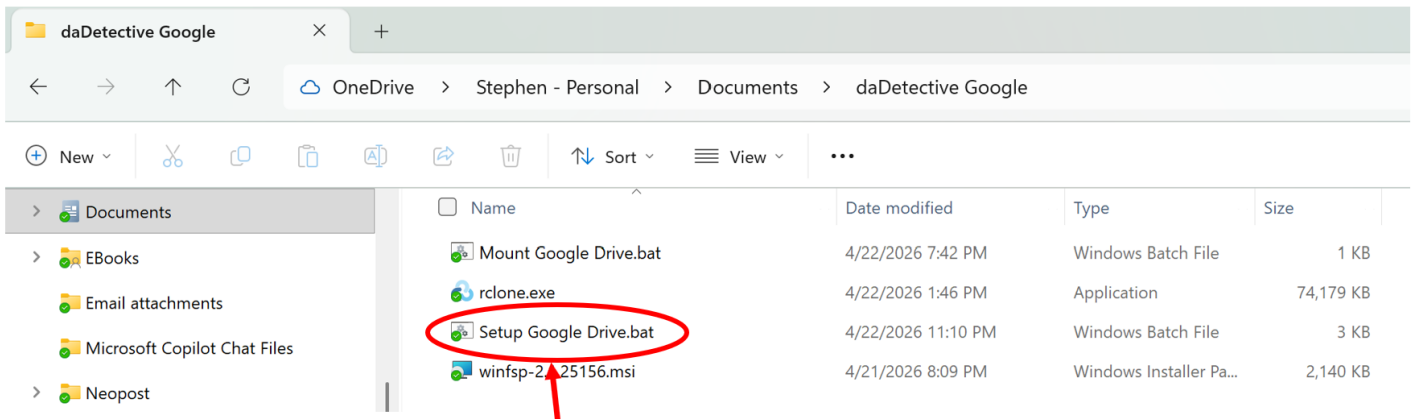
6b) Click on **“Extract”**



7) Double Click on **“daDetective Google”**
(or daDetective Dropbox etc)

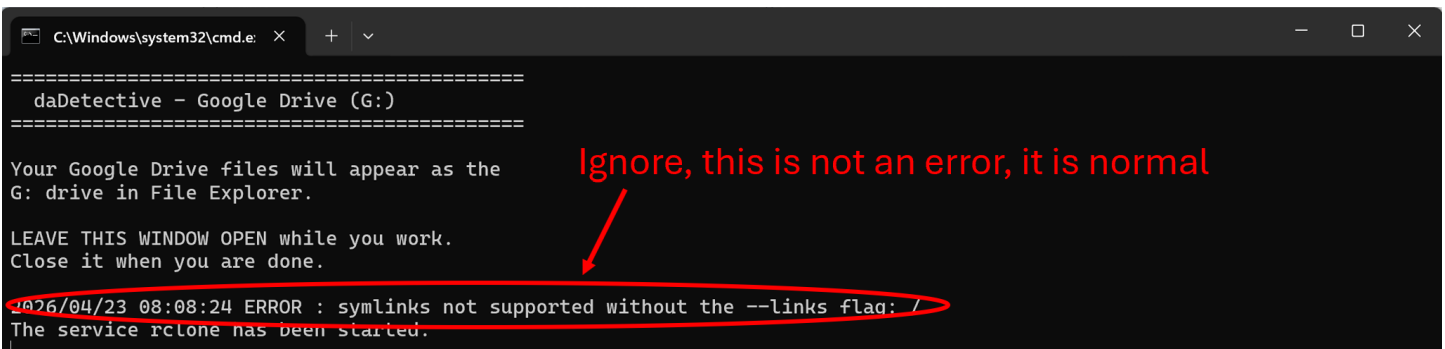


8) Double Click on "Setup Google Drive.bat" (or Setup Dropbox.bat etc)



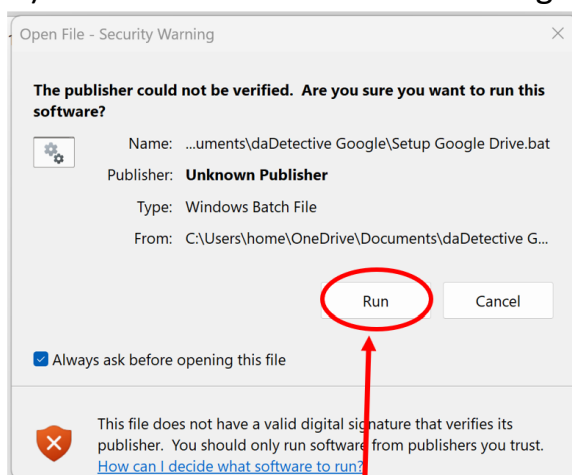
8) Double Click on "Setup Google Drive.bat"

A small setup window will open. Leave it open while using your cloud drive. Depending on your cloud provider you may have to provide additional information. Do not close the black command box until you are done uploading files. It is required for your PC to see the cloud. Ignore the line that says "Error", it is normal and not an actual error.

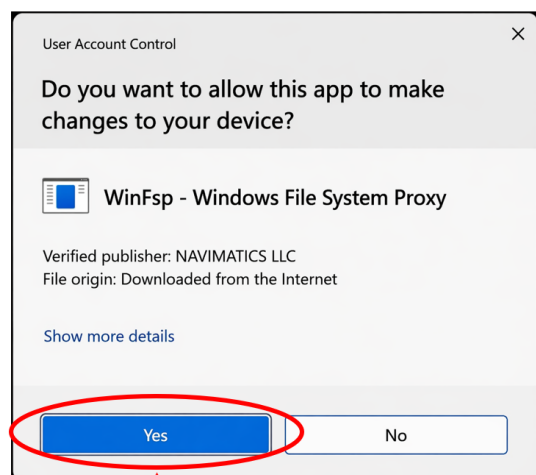


9a) You may be asked to run the file, Click "Run"

9b) You will be asked to allow change, Click "Yes"



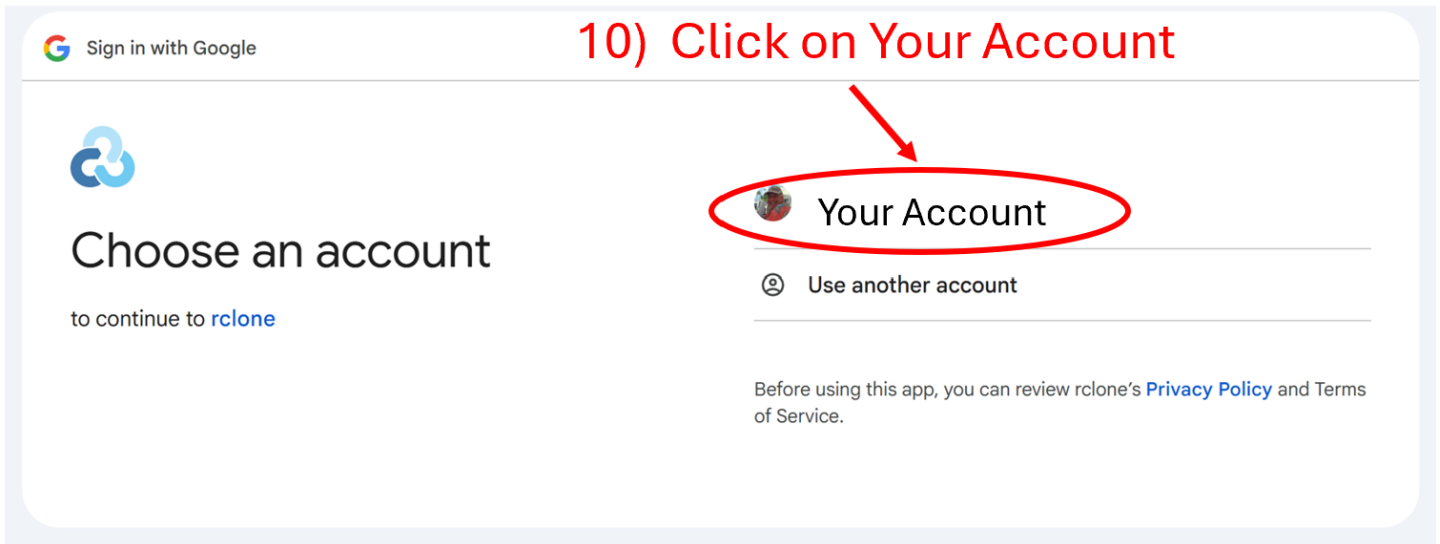
9a) You may be asked to run the file Click "Run"



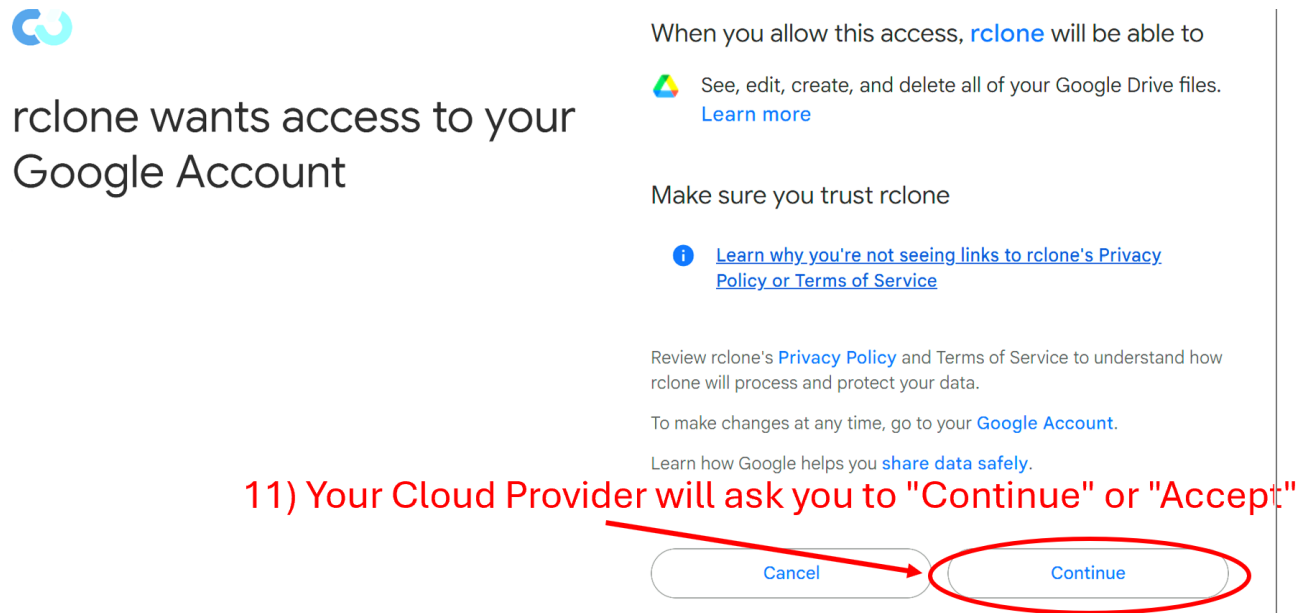
9b) You will be asked to allow changes Click "Yes"

The program will open your browser to log into your provider.

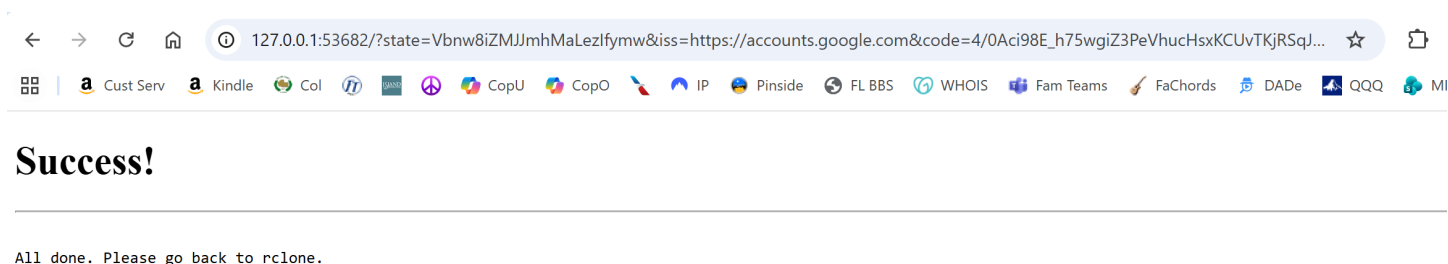
10) Click on your Account



11) Your Cloud Provider will ask you to "Continue" or "Accept"

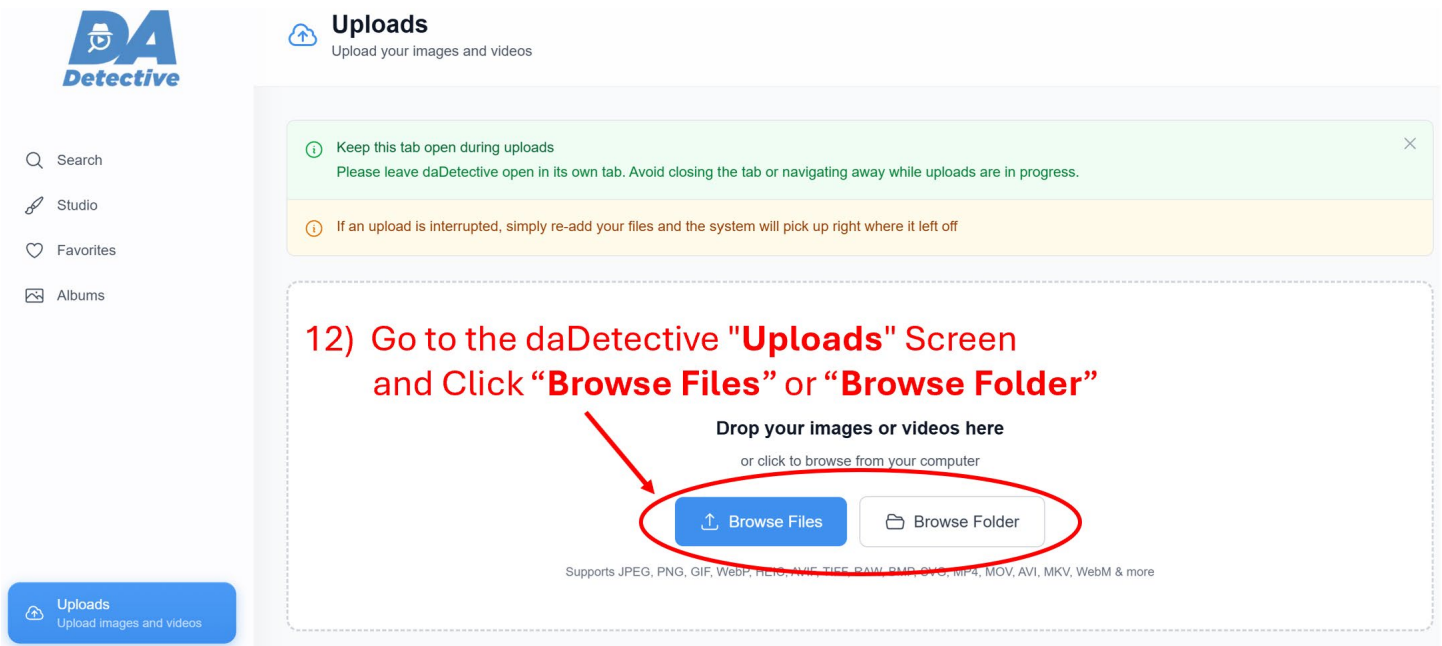


You will see a screen that says "Success" (Your provider may have a different message)



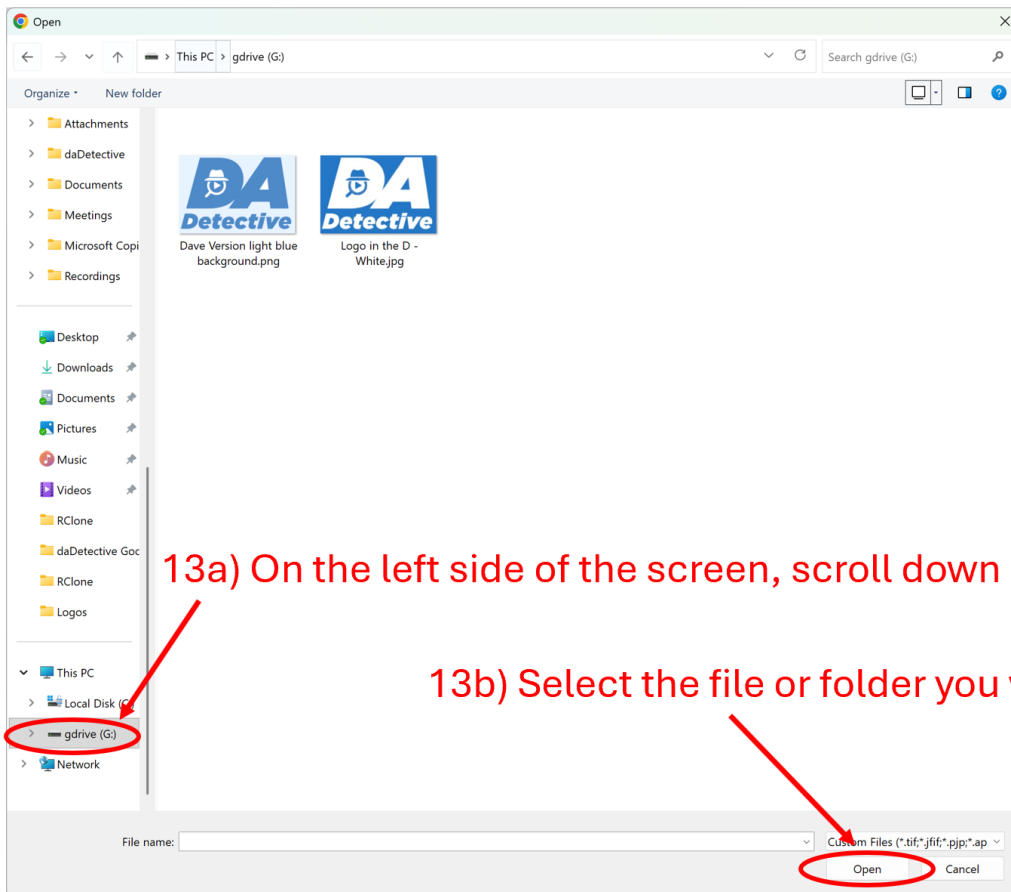
You have now set-up your cloud account as a drive on your PC!

12) Go to the daDetective "Uploads" Screen and Click "Browse Files" or "Browse Folder"



13a) On the left side of the screen, scroll down and select "gdrive (G:)"

13b) Select the file or folder you want and click "Open"



You now have installed all of the software required to access cloud files from your PC in daDetective and Windows Explorer. The setup utility created a copy of "**Mount Google Drive**", (or Mount Dropbox etc) on your desktop. This allows you to connect Google and see it as a drive in Windows Explorer any time you need to. Make sure to leave the black command window open while you are using it.

Common Issues

- I can't see the "**gdrive (G)**", you closed the black command window, run "**Mount Google Drive**" (or Mount Dropbox etc)
- Windows blocked file → Click "**More Info**" > "**Run Anyway**"
- Browser did not open → Copy link from black window
- Drive not visible → Wait 30 seconds / reopen Explorer
- In the black command window you may see the following:

"2026/04/23 11:45:36 ERROR : symlinks not supported without the --links flag: /

This is normal and really not an error, you can ignore it

Technical Reference Section

Links download the file to your downloads folder

[High Level Technical Overview](#)

[Detailed Technical Reference](#)

[Manual Configuration](#)