

mp/ks
Alice Greenland
"Pam Louie"
Bob Dimity

D.A.M.

Carol Beth Ahrens
Betty Dempster

Mae Malison
Margaret Ann Jones

Marilyn Pelgrim

Ronald Hilke

~~John Kaufman~~
~~Herold Laroc~~
~~Glen Rothmader~~
~~Harriet Barnes~~

Louise Jones

Allyn [unclear]

Marilyn Decatur

Jean Hamilton

Norman Goodbrod
May 22 - '47

Margaret Hoyt

Food Luck!
Looke Mann

Rosemary Talbot

Betty Long

Sue Bailey

Peggy Arnold

Marjorie Reeves Smith

Bob Downer

Bugs

Pat [unclear]



1947

GRINNELLIAN

TABLE OF CONTENTS

- *With Autumn's Return*
- *When Winter Comes*
- *In Spring*
- *And Now It's Summer*

Grinnell High School
Grinnell, Iowa

1947 Grinnellian

ACKNOWLEDGEMENTS

Plates for four-color picture used by courtesy of Ahrens Hybrid Seed Corn Company; printed by Marshall Printing Company, Marshalltown.

Photographs for end sheets, spring, summer and fall division pages by courtesy of the DeKalb Agricultural Association, DeKalb, Illinois.

Photograph of first youth center governing board by courtesy of the Des Moines Register.

Photographs of high school classes, football squad, Honor G Club, boys' and girls' glee clubs and senior officers by Hostetler Studio, Des Moines, Iowa.

Photographs of a capella choir and band by Preston Studio, Grinnell.

Youth center informal pictures, "Date with Judy", Boone basketball game, some of the F. F. A. and 4-H pictures, detasseling, Boy Scout Court of Honor, Camp Fire Girl Grand Council, football informal, other informal pictures courtesy of the Grinnell Herald-Register, Grinnell, Iowa.

Individual pictures furnished by subject. Snapshots and informal pictures contributed by students and other individuals.

All other photography by Duncan Studio, Grinnell.

Covers by S. K. Smith Company, Chicago.

Engraving by Jahn and Ollier, Chicago.

Printing by Herald-Register, Grinnell.



Aye, the corn, the royal corn, within those yellow hearts there is of health and strength for all the nations. The corn triumphant!

From an address by former Governor Oglesby of Illinois (1865-1869)

Dedication

Since the beginning of human existence on this earth, we have looked to the land for our very lives. In time of need the land has always sustained us—a firm hand to grasp in the darkness through which we have passed and through which we must pass. And what of our land? It is rich—rich in beauty and wealth unequalled elsewhere in the world. It is rich because God made it so, and it is rich because we have maintained it through the years. The farmer with his powerful tractor today has come a long way from the farmer of yore with his pointed wooden plow. And he has learned much. From his knowledge he has made and is making our land more and more productive. Thus these two—the land and the farmer—have enriched our lives immeasurably, and it is to them that we dedicate this book.



HALL OF FAME

Since the theme of the 1947 yearbook is an agricultural one, the committee for choosing the candidates for the Hall of Fame decided to cooperate with the staff and choose individuals who have made an enviable record in the field of agriculture. By no means are all candidates "dirt farmers" but their primary interest is in rural peoples, their problems and their organizations. The lives of Grinnell's Great span the life time of our city, dating from the founding of it until the present time. It is through the efforts of such citizens that Iowa has attained her high rank as an agricultural state. Grinnell can be justly proud of their contribution.

1947 ELECTION

Josiah Bushnell Grinnell

Deceased

Born December 22, 1821, New Haven, Vermont. Founded city of Grinnell on March 13, 1854. Philanthropist, outstanding agriculturist, financier, author, public speaker, preacher, teacher, politician and abolitionist. President of Iowa Central Railroad; U. S. House of Representatives.

George M. Heald

Billings, Montana

Class of 1894

Rancher and large farm operator in Minnesota, Wyoming and Montana. Specialized in large scale raising of sheep, grain and cattle. Retired but still active in cattle ranching.

Mary Harpster Decatur

Grinnell, Iowa

Class of 1901

Leader in farm and extension work in Poweshiek and Jasper Counties. Club leader and executive in Farm Bureau and 4-H work.

A. Judson Blakely

Grinnell, Iowa

Class of 1909

Iowa Master Farmer. Executive of numerous livestock associations and councils. Member of Board of Directors of National Wool Marketing Association. Twenty years service as director of Grinnell State Bank; twelve years as vice-president. Twenty-five years as 4-H leader in Poweshiek County. Moderator of First Congregational Church.

Ralph Lyman Longley

Grinnell, Iowa

Class of 1910

Outstanding community leader, speaker and citizen. Farmer and stock man. Breeder of Hereford cattle. School board member, Farm Grange executive, past commander of American Legion.

Grace McIlrath Ellis

Marengo, Iowa

Class of 1917

Teacher, lecturer, writer and community leader with special interest in betterment of library facilities. Specialist in field of home economics. Articles published in Country Gentleman, Better Homes and Gardens, Women's Home Companion and other national magazines.

Elmer S. Iverson

Grinnell, Iowa

Class of 1921

Farmer and outstanding worker in farm organizations. School director, executive in State Grange Association, executive in Rural Telephone Line and Rural Fire Truck Association. Executive of Cedar Valley Record Association and Farm Business Association. Member of Board of Appeal, Iowa Selective Service. Deacon of First Congregational Church.

George L. Paul

Brooklyn, Iowa

Class of 1921

Farm operator and executive in farm organizations. Bear Creek Township assessor for ten years. Executive of Poweshiek County Farm Bureau, Brooklyn Cooperative Creamery, State Board Creameries, Inc., Member Poweshiek County AAA committee. Past master of Masons and 32nd degree Mason.

Claude Ahrens

Grinnell, Iowa

Class of 1931

Salesman, promoter and executive in hybrid seed corn business. General manager of Ahrens Hybrid Seed Corn Company. President of Ahrens Manufacturing Company.

HALL OF FAME

The Hall of Fame Committee is selected by the Superintendent of Schools from the faculty of the Grinnell Public Schools and citizens of Grinnell. The Superintendent and Senior High School Principal are ex-officio members of the committee. Committee members must have a wide acquaintance with the present and past student bodies of the Grinnell Public Schools, have a wide knowledge of the history of the town and must have been in residence in the community for a period of twenty years.

Election to the Hall of Fame is to be cumulative from year to year. Former pupils, whether high school graduates or not, are eligible. Election is based on outstanding achievement of the individual in his line of endeavor. Election will be held annually during the spring semester. For future years an honorary election is contemplated for those persons who have been closely connected with the public schools but who were not former pupils in the system. Josiah B. Grinnell is such a choice this year.

1945 ELECTION

Edward B. Brande, Class of 1881, Philanthropist
 Nora Barnes, Class of 1890, Social Service, Nurse
 George M. Longshore, Class of 1903, Athlete
 Billy Robinson, Ex-class of 1908, Pioneer in Aviation
 Harry Lloyd Hopkins, Class of 1908, Federal Administrator
 Hallie Flanagan (Davis), Class of 1908, Educator, Dramatist
 Ruth Suckow (Nuhn), Class of 1910, Author
 James McConaghie, Class of 1912, National Park Superintendent
 Arthur W. Radford, Ex-class of 1914, Rear Admiral, U. S. Navy
 Harry Grinnell Barnes, Class of 1919, Educator, Author
 Dorr Graves Yeager, Class of 1921, Naturalist, Author

HALL OF FAME COMMITTEE

Selected 1945

Rosemonde E. Rule, Chairman	F. F. Clindinin
Julia B. Wheeler	Dr. C. E. Harris
Emma Bobzin	T. T. Cranny
Ina Sprague	R. A. Hawk

HALL OF FAME

1946 ELECTION



EDNA DAVIS
Class of 1877
Educator



ELIZABETH (Lizzie) Davis
Class of 1877
Educator



HARRY WALDO NORRIS
Grinnell College, 1886
Zoologist, Educator



HARRY G. WILLARD
Class of 1891
Physician and Surgeon



D. W. NORRIS
Class of 1892
Editor, Industrialist

HALL OF FAME



O. F. PARISH
Class of 1894
Physician and Surgeon



KARL KIESEL
Class of 1902
Athlete



EVERETT S. TURNER
Ex-Class of 1906
Y. M. C. A. Secretary



CLYDE KING
Class of 1915
Naval Reserve Officer



JOHN TALBOTT
Class of 1920
Physician, Educator



JOHN H. SPENCER
Class of 1925
Political Adviser

A black and white photograph of a rural landscape. In the foreground, there is a field of tall, textured vegetation, possibly grass or weeds. In the middle ground, a line of haystacks is visible, stretching across the frame. The background shows a line of trees under a bright, overcast sky. The overall scene is quiet and pastoral.

*With Autumn's
Return*



ADMINISTRATION

BOARD OF EDUCATION



First row: Anna K. Ramsey, Verl Sammons, Margaret Marsden, Secretary.
Second row: O. Dale Smith, President, L. G. Keeney, Howard Edwards.



RUPERT A. HAWK
Superintendent of Schools



T. T. CRANNY
Principal, High School

• • • • • a n d P R I N C I P A L S



CLYDE MEAD
Principal, Junior High School



NETTIE BAYLEY
Principal, Parker School



MYRTLE E. PARKES
Principal, Cooper School



INA SPRAGUE
Principal, Davis School

HIGH SCHOOL



CHRISTINE J. BAKER
Vocal Music (6-12)
Concerts and Operettas



PAULINE CARMODY
Bookkeeping, Business Law
Grinnellian



IRENE J. COOK
English, Creative Writing
Orange and Black



LESLIE E. DOUGLASS
Vocational Agriculture
F. F. A.



ELAINE GORSUCH
Vocational Home Economics
F. H. A.



HARRIET E. KORNS
Latin, World History
Latin Club



ARTHUR C. HILLS
Instrumental Music (3-12) Band (7-12)
Marching Band, Concerts



GEORGIANA HOLLOWAY
General Science
Freshman and Sophomore
Science Clubs



H. BEULAH HATCHER
Stenography, Typewriting, Business
English
Commercial Club

FACULTY



E. A. KURTH
Physics, Biology
Athletics, Freshman-Sophomore



GAR LAMB
Coach, Physical Education (6-12),
Algebra, Senior Sponsor,
Honor G Club, Co-sponsor



JOSEPHINE K. LAROS
Spanish, English
Spanish Club



LAURA W. MATLACK
Art (1-12)
Grinnellian, Junior Red Cross



DORIS NELSON
English
Dramatics, Junior sponsor



O. B. NELSON
History, Civics
Assistant Coach, Junior Sponsor



BESSIE NUCKOLLS
Geometry, Trigonometry
Y. W. C. A.



J. S. PALMER
Manual Arts (7-12)
Senior Basketball



JOAN PIPER
Physical Education (1-12)
G. A. A., Senior Sponsor



ROSEMONDE RULE
Economics, Sociology, World History
Honor G. Club, Co-sponsor;
Ch. Faculty Program Committee



LULU DEVINS THOMAS
U. S. History



EVELYN THOMPSON
English I and II
Grinnellian



EVA TIMBERLAKE
English, Mathematics



JULIA B. WHEELER
Algebra
Y. W. C. A.



BEULAH WILSON
Typing (7-12)
Orange and Black

CLERKS



MARGARET ARMSTRONG
Secretary to Principal



MARGARET MARSDEN
Secretary to Superintendent



ADA S. NELSON
Librarian

Y. W. C. A.

CABINET

Pat Nolan, Miss Wheeler, Adah Worthy, Joanne Fritz, Ruth Parker, Colleen Herzberg, Shirley Shope, Imogene Newcomer, Mrs. Nuckolls.



SQUAD LEADERS

Standing: Jean Barkley, Mrs. Nuckolls, Harriett Blakely. *Seated:* Frances Monroe, Adah Worthy, Marjorie Mitchell, Miss Wheeler, Rosemary Talbott.



The Y.W.C.A. membership includes every girl in high school. Its activities were planned and carried out this year by the cabinet members under the leadership of president Imogene Newcomer.

Bi-weekly meetings were held with educational, recreational, and inspirational programs. Numerous projects were completed and carried out under the guidance of the sponsors, Miss Wheeler and Mrs. Nuckolls. The Mother-Daughter Dinner for senior girls and their mothers was held this year in the recreation room at the high school. The organization was financed by the annual rummage sale and by selling pop corn at basketball games.

STUDENT COUNCIL



Seated: Barbara Barkley, Eugene Smith, Margaret Hoyt, Jeanne DeBondt, Mr. Cranny, Jane Lang. *Standing:* Jack Rilea, Gene Fritz, Keith Phipps, Roger Mitchell, Darrell Iverson, Allan Meyer, Colleen Rose-land, Marianna Willer.

The Student Council is composed of fourteen members who are elected by their respective classes at the beginning of each year and serve until their graduation. The main activities of the groups this year included the sponsoring of several assembly programs, assignment of pep meetings, the maintenance of a suggestion box, and assistance in the opening of the Youth Center with an all high school party. Meetings were held weekly in the office of the sponsor, Mr. Cranny. The officers were:

President
Vice-president
Secretary-treasurer

First Semester
Eugene Smith
Margaret Hoyt
Jeanne DeBondt

Second Semester
Margaret Hoyt
Jack Rilea
Keith Phipps

YOUTH CENTER

November 15, 1946 was a very important date in the calendar of every GHS student. It marked the opening of our new Youth Center located above the City Offices. Three large rooms constitute the Center—a reading and lounging room, a game room, and the main room where we all dance and enjoy the refreshments served at the snack bar. Students aided in preparing for the grand opening by painting, building, and repairing. Special credit is due Wilma Inman who drew the murals of teen-age dancers and athletes on the wall in the main room. The opening, itself, was a great success with over three hundred students and adults in attendance. We have wanted a Youth Center such as this for many years and we cannot express our gratitude in mere words to all those who have made it possible.



GOVERNING BOARD

Kneeling: Darrell Iverson, Jack Pasch, Imogene Newcomer, Nancy Duke. *On snack bar:* Allan Meyer, Peggy Arnold, Esther Ann Jones, Carol Beth Ahrens, Betty Long.

The Youth Center was governed this year by two groups of students and the director, Miss Betty Long. The first governing board, appearing on the preceding page, served from November through February and had charge of the membership card sale, selected committees to work at the snack bar on the nights the Center was open, and set up regulations necessary for its operation. They were chosen by Miss Long and Mr. Cranny with the authorization of the Adult Youth Council. The second governing board, chosen in the same manner and again consisting of two members from each class, was installed in February and served through May.



Front row: Jane Lang, Patty Pieper, Carolyn Jackson. Back row: Nancy Vine, Bud Simmons, Ronald Hilke, Myrtle Lou Sanger. Absent: Roy Bryan.

Opening Night.

Who's Winning?

Cleaning Up.

A Busy Night



HONOR "G"



Jean Barkley, Molly Hoskins, Pat Nolan, Norman Hall, Carma Graff, Jackie Lauber.

October twenty-fifth was an exciting day in the lives of GIS students. Not only was it the night of the Oskey game, but also the night when the first homecoming queen to be elected in many a year would be presented. The candidates were nominated by the Honor "G" Club and voted upon by the student body. Elected to reign with King Norman Hall was Pat Nolan as queen, with Jean Barkley, Molly Hoskins, Carma Graff and Jackie Lauber as her attendants. Congratulations to you all!

The purpose of this club is to create a spirit of good will among the boys participating in athletics. Activities during the year included the publishing of programs for home games, the Honor "G" Banquet held in the spring, and attending the state basketball tournament at Iowa City. Officers were:

- | | |
|---------------------|-------------------|
| President | George Larsen |
| Vice-president | Maynard Raffety |
| Secretary-treasurer | Junior Duncan |
| Sergeant-at-arms | Robert Wittenburg |



First row: Paul Criswell, Wayne Ryan, Maynard Raffety, Jack Rilea, Junior Duncan, George Larsen, Bob Wittenburg. Second row: Rex Hall, Lawrence Krumm, Kenny Cessna, Kenneth Kaisand, Harold Fleener, Howard Neighbors, Bob Manly. Third row: Miss Rule, Clyde German, Kenny Adams, Barney Fleener, Norman Hall, Russell Bump, Gar Lamb.

FOOTBALL



Front row: Tom Mintle, Harold Fleener, Junior Duncan, Bob Wittenburg, Maynard Raffety, Kenny Cessna, Wayne Ryan, Kenneth Kaisand, Clyde German. Second row: O. B. Nelson, George Larsen, Don Herbert, Jack Rilea, Howard Neighbors, Rex Hall, Barney Fleener, Lawrence Krumm, Gar Lamb.

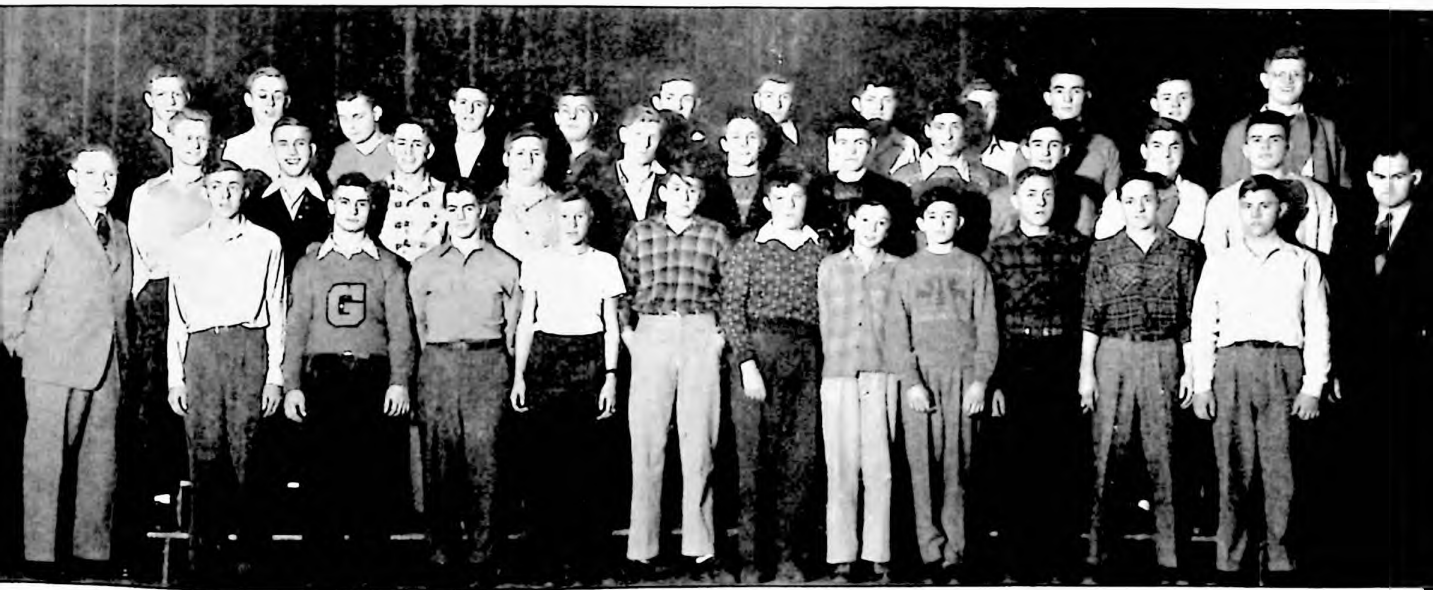
Coach Lamb called his first gridiron practice in the middle of August with sixty boys reporting for regular practice including eight lettermen from the preceding season and four lettermen who had returned from the service. Under the efficient coaching of Gar Lamb, O. B. Nelson, and Lyman Case, the Tigers were able to place fourth in the conference with two wins and three losses. Maynard Raffety was chosen honorary captain at the close of the season.

CONFERENCE STANDINGS

	Won	Lost
Marshalltown	5	0
Newton	4	1
Ames	3	2
Grinnell	2	3
Boone	1	4
Oskaloosa	0	5

SCORES FOR ALL GAMES

Grinnell	0	McKinley	0
Grinnell	6	Marshalltown	33
Grinnell	18	Newton	19
Grinnell	12	Boone	0
Grinnell	0	Ames	24
Grinnell	24	Oskaloosa	0
Grinnell	9	Roosevelt	13



First row: Gar Lamb, Tom Mintle, Maynard Raffety, Jack Lang, Gerald Allan, Wayne Bliven, David Ahrens, Dick Clark, David Talbott, Robert McClure, Gene Fritz, Wayne Hasselbrink, O. B. Nelson. Second row: Everett Pederson, Jack Rilea, Willis Fritz, Charles Fudge, George Larsen, Clyde German, Rex Hall, Dennis Ritter, Harry Barnes, Wayne Ryan, Martin Hankinson. Third row: Lawrence Krumm, Kenny Cessna, Howard Neighbors, Bob Wittenburg, Junior Duncan, Harold Fleener, Delmar Nagel, Robert Gerard, Almon White, Barney Fleener, Kenneth Kaisand, Dennis Dimit.

A DATE WITH JUDY

A stage presentation of Aleen Erickson's radio show, "A Date With Judy," depicts a period in the life of a typical teen-age girl. Judy sells subscriptions for Community Relief in order to be queen of her club's formal dance and lead the grand march. Her exploits involve the public embarrassment of her parents and an attempt to help a friend, Rex O'Connor, elope. Eventually she untangles her affairs and attends the dance, as queen, with her boyfriend, Oogie Pringle.



CAST

Judy Foster	Alice Fair
Mr. Foster	Tom Playle
Mrs. Foster	Betty Robbins
Randolph Foster	Dave Talbott
Oogie Pringle	Jerry Laros
Mitzi Hoffman	Harriett Barnes
Barbara Winsocket	Rosemary Talbott
Hannah	Lucille Durr
Mrs. Schlutzhammer	Nancy Scurr
Rex O'Connor	Barney Fleener
Susie O'Connor	Dorothy Inman
Mrs. Hotchkiss	Wilma Inman
Eloise Hotchkiss	Sonya Pedersen
Radio Announcer	Kenneth Cessna



Front row: Virginia Turner, Myrtle Lou Sanger, Margaret Hoyt, Marjorie Reeves. Back row: Raymond McDowell, Serge Phelps, Carl Wittrup.

At a school assembly held Tuesday, October 22, poetry winners for this school year were announced. The contest was again sponsored by the Drummond Club of Grinnell. Winners in the sixth grade and junior high division were: first place, "Autumn's On Its Way" by Virginia Turner, sixth grade, Center; second place, "The Trees" by Marjorie Reeves, eighth grade, Center; and honorable mention, "The Little Bird" by Carl Wittrup, sixth grade, Davis. In the senior high division the winners were: first place, "Hunting Rabbits" by Serge Phelps, eleventh grade; second place, "No Race Riot" by Margaret Hoyt, twelfth grade; and honorable mention, "Assembly" by Myrtle Lou Sanger, tenth grade. It is possible that these poetry contests may become an annual affair to be participated in by all English students.

DRUMMOND CLUB

POETRY CONTEST

JUNIORS.

The most important activity of the Class of 1918 was the planning of the Junior-Senior Prom. A committee headed by the second semester vice-president of the junior class was responsible for engaging a dance band, decorating the gym, and attending to other details. As is the G.H.S. custom, the senior class members were guests of the junior class. Officers were: President, Sonya Pedersen 1; Jerry Laros 2. Vice-president, Jack Rilea 1; Barbara Bailey 2. Secretary, Patty Pieper 1; Marie Rasmussen 2. Girls' Treasurer, Harriett Barnes 1; Carolyn Jackson 2. Boys' Treasurer, Harry Barnes 1; Jack Rilea 2. Sergeant at-Arms, Clyde German 1; Bob Wittenburg 2. Sponsors, O. B. Nelson and Miss Nelson.



First row: Pedersen, Rasmussen, Pieper, Jackson, Bailey, Rilea. *Second row:* Nelson, Wittenburg, Barnes, Laros, German, Barnes, Nelson.

First row: Orville Hanson, Bob Dimit, Barbara Bailey, Phyllis Johnson, Paul Criswell, Howard Bell. *Second row:* Duane Johnson, Darrell Iverson, Bradford Jones, Charles Fudge, Jim Adkins, Sibyl Kaldenburg, Gale Arthur, Doris Aldrich, Doris Burnham, Betty Heinle, Delores Johnson, Janet Johnson, Carolyn Jackson. *Third row:* Wanda Jackson, Doris Elertson, Martha Anderson, Mary Clayton, Lucille Baarda, Joanne Fritz, Naomi Badger, Pauline Clayton, Delores Graff, Phyllis Fetzer, Robert Ditzler, Lawrence Krumm. *Fourth row:* Jerry Laros, Wayne Hendrickson, Elmer Hillmann, Kenny Cessna, George Larsen, Raymond Larsen, Harriett Barnes, Clyde German, Kenny Adams, Harry Barnes, Charles Anthony, Willis Fritz, Junior Duncan.



First row: Norma Wiley, Peggy Smith, Wanda Thompson, Allan Moyer, David Schultz, Ruth Ann Schmitz, Beatrice Sutton, Marie Rasmussen, Sonya Pedersen, Cora Valleau Mann, Colleen Roseland. *Second row:* William Parker, Henry Schmidt, Colleen O'Hara, Ruth Van Draska, Adah Worthy, Virginia Tuttle, Patty Pieper, Marianna Willer, Wanda Milburn, Barbara Thon, Elinor Parkhurst, Jackie Starnes. *Third row:* Ruth Strawser, Geraldine Reeves, Priscilla Moore, Tom Playle, Jack Rilea, Phil Pentzer, Jack Pasch, David Marlowe, Russell Stoker, Francis Malloy, Tom Mintle, Lyle Routier. *Fourth row:* Robert Norton, Gordon Parrott, Almon White, Jack Wooten, Kenneth Kainsand, Serge Phelps, Bob Wittenburg, Archie Ryan, Gordon Wells, Keith Paulson, Kenneth Rayl, John Pudgham, Wayne Ryan.

SOPHOMORES

First row: Michael Hotelkin, John Kaufman, Joyce Blankenfeld, Phoebe Jackson, Barbara Barkley, Betty Kaisand. *Second row:* Naomi Ferneau, Marjorie Cox, Dorothy Kaldenberg, Jewell Jensen, Bette Durr, Pat Keeton, Blanche King, Marvin Kreigel, Edward Adkins, Raymond Ahrens, Delmar Gildersleeve. *Third row:* Jim Jorris, Mary Anderson, Joanne Flanagan, Carol Beth Ahrens, Mary Louise Anderson, Nancy Duke, Margaret Ann Jones, Veda Arment, Catherine Duncan, Edith Criswell, Edwin Jensen, Keith DeHart, Harold Kerby. *Fourth row:* Kenneth Bell, Jerry Carter, Clarence Cogley, Jack King, Wayne Hasselbrink, Leland Billings, Gene Fritz, Darrell Casey, Stanley Korfmacher, Marion Eversdyke, Robert Gerard, Kenneth Burnham.



First row: Robert Lawthers, Robert Leucht, Velda Thompson, Mary Ann Pugh, Lila Routier, Ruth Tone, Addie Mehlin, Doris Smith. *Second row:* Virginia Laymiller, Lela Mae Strovers, Mary Ida Sevenbergen, Roberta Tibbs, Anna Lee, Clara Renaud, Marilyn Pilgrim, Kenneth Oltrogge, Richard Watkins, Edward White. *Third row:* Mary Lou Norris, Myrtle Lou Sanger, Susan Mueckler, Jackie Swaney, Larry Livingston, Keith Phipps, Lyle White, Grace Thompson, Thelma Thompson. *Fourth row:* Robert Preston, Raymond McDowell, Robert McClure, Wilford Mikel, Donald Milburn, Barbara Reeves, Bob Staffanou, Harold Schmidt, Shirley Tibbs, Beverly Thorpe.

FRESHMEN

First row: Edgar Anderson, Gerald Allan, Robert Cooper, James Gault, Robert Burnham, James Cogley, Jerry Dimit, Dick Clark, Lloyd Durr, Billy Doyle, Gene Gritsch, Bill Flanagan, Ben Badger. *Second row:* Alico Greenland, Byrna Doud, Shirley Evans, Esther Duncan, Marie Charlier, Donna Durr, Mary Carter, Mary Ellen Brock, Verlene Brooks, Billie DeHart, Roberta Hanson, Mary Ann Chyma, Mary Lou Brown. *Third row:* Richard Bell, Joyce Broyles, Joanne Hamilton, Robert Fontinell, Jim Dimit, Graene George, Wayne Burnham, Mary Ditzler, Roseleen Holland, Vera Anderson, Genevieve Fowler, Dick Bonyata. *Fourth row:* Martin Hankinson, Dean Clark, Del Gaylor, Duane Adair, Howard Bell, Lenville Elam, Leo Earhart, Wayne Blevin, James Barkley, Keith Dempster, David Ahrens, Clair Comerford.



First row: Betty Wittenburg, Wilma Schmitz, Dorothy Inman, Maxine Moyer, David Talbott, Jack Wiley, Melvin Tone, James Wisecarver, Carol Renaud, Clifford Strovers, John Luecht. *Second row:* Joan Sidie, Donna Patten, Ruth Schnell, Roger Long, Beverly Peterson, Lucille Moore, Irene Schaffer, Wilma Stoker, Joyce Jensen, Marilyn Strasser, Nancy Vine, Dot Van Horn, Mary Ann Peters, LaRue Matthews, Carolyn Raffety. *Third row:* Hollis Phipps, Conard Schallau, Carol Salyers, Mac Molison, Howard Miller, Ray Saunders, Roger Mitchell, Lowell Thompson, Bill Koger, Seymour Raffety, Harold Rehberg, Marcell Snodgrass. *Fourth row:* Bill Wilson, Paul Ohland, Dennis Ritter, Gordon Van Donselaar, LaVerne Routier, Dale Wooten, Hurvey Krumm, Marilyn Sammons, Shirley Tice, Louise Jones, Esther Ann Jones, Doris Puls, June Lang, Phyllis Paulson.

JUNIOR HIGH



FACULTY

Seated: Miss Emma Bobzin, Arithmetic, Library Club, 8-1; Mrs. Virginia Morgan, English and Reading, Plays and Assemblies, 7-3; Mr. Clyde Mead, Principal, History, 8-3.

Standing: Mr. Lawrence Meseck, Civics and Geography, History, Coach, 7-2; Miss Margaret Stafford, Homemaking and Science, Homemaking clubs for Boys and Girls, 7-1; Mrs. Helen Olson, English and Civics, Plays and Assemblies, 8-2.

Not pictured: Miss Wilson, Typing; Mr. Palmer, Manual Training; Mr. Lamb, Boys' Physical Training; Miss Piper, Girls' Physical Training; Miss Baker, Vocal Music; Mr. Hills, Band; Miss Matlack, Art.

"Active" is the word for junior high students. The energetic youth of the seventh and eighth grades have had a busy year, full of work and fun. Their "Holiday Review", one of the outstanding programs of the year, was repeated for the high school. The junior high operetta, "White Gypsy", in which every student participated, was exceptionally fine. Seventeen students are members of the junior high band. Other unusual activities include the Boys' Homemaking Club and the Library Club. We say, "Hats off!" to the junior high for a successful year.

BASKETBALL

The junior high eagers, after dropping their initial game, hit into the winning column and came through with flying colors. Under the guidance of Coach Meseck, they won twelve games against the one defeat.

Visitors	Grinnell	Visitors	Grinnell
Marshalltown	17	Gilman	25
Kellogg	16	Register & Tribune	22
Gilman	12	Oskaloosa	9
Kellogg	12	Marshalltown	16
Brooklyn	12	Newton	12
Oskaloosa	12	Brooklyn	16
Newton	12		38

BASKETBALL TEAM

First row: Jimmy Menges, Jerry Hagen, Mr. Meseck, Rodney Martens, Stanley Preston. *Second row:* Lyman Walter, Clinton Ross, Dick Ritter, David Abarr, Bill Manly, Roger Zimmerman. *Third row:* Clayton Ross, Sam Porter, John Ländenmayer, Roger Tharp, Kenneth Shockey. *Not pictured:* Edward Tibbs, Jim Davis, Stanley Greenwald, Roger Thorp.

LIBRARY CLUB

First row: Carol Farley, Lorraine Edwards, Bernice Duncan, Gloria Nichols, Nella Schultz, Janice Renaud. *Second row:* Ivan Meeker, Joyce Lamb, Florence Nichols, Joanne Larsen, Frances McDonald, Glene Mitchell, Miss Bobzin. *Third row:* Georgia Clingan, Darlene Smith, Mary Evans, Norma Ahrens, Ann Bolen, Harriet Gale. *Not pictured:* Joanne Thomann, Delores Holland, Marilyn Decatur, Barbara Reeves.



EIGHTH GRADE



SECTION ONE

First row: James Davis, Tom Johnson, Donna Van Draska, Ruby Cooper, Bernice Duncan, Alice Gilliland, Nella Schultz, Jackie Marcum. *Second row:* Clayton Adams, Robert Pierce, Arnold Thon, Dorothy Fleener, Norma Ahrens, Harold Childers, Russell Schmidt, Edwin Mullins. *Third row:* Eddie Shannon, Carl Evans, Edward Tibbs, James Talbott, Rodney Martens, Andy Davis, Jim Sharp, Clinton Ross. *Not pictured:* Charlotte Griffin.

SECTION TWO

First row: Dick Bortell, Kenneth White, Delores Holland, Erma Lippincott, Ruth Russell, Jewel Hendrickson, Kenneth Shockley, Jimmy Menges. *Second row:* Sue Bailey, Roberta Johnson, Marilyn Decatur, Marjorie Reeves, Bonnie Hagen, Joanne Thomann, Farrell Davis, Nelma Large. *Third row:* Stanley Greenwald, Kenneth Cline, John Lindemayer, Robert Kelm, Allen Burns, Bill Manly, David Kester. *Not pictured:* Roger Zimmerman.

SECTION THREE

First row: John Dahl, Lyman Walter, Donna McMullen, Carol Farley, Lorraine Edwards, Martha Strovers, Donald Pearson, Dean Martin, Don Breese. *Second row:* Helen Decatur, Georgia Clingan, Mary Grandstaff, Joanne Larsen, Mabel Vaughn, Darlene Smith, Vivian May, Dorothy Kelly, Max Frazier. *Third row:* Florence Nichols, Bobby Wilfong, Bob White, Jerry Hagen, David Abarr, Bill Nolan, Herschel Edwards, Billy Doud. *Not pictured:* Stanley Preston, Edward Springer.

SEVENTH GRADE



SECTION ONE

First row: Roger Tharp, Franklin Kester, Jerry Doyle, Richard O'Hara, Donald Kerby, Neil Johnson, Wayne Green, Raymond See. *Second row:* Carl Ross, Leo Davis, Frances McDonald, Joyce Lamb, Helen Shockley, Marilyn Smith, Blanche Hartzell, Harry Scurr, Clark Crawford. *Third row:* Robert Anderson, Larry German, Paul Clayton, Walter Burns, Lester Hill, Betty Earhart, Hazel Timbrel, Bernard Kriegel. *Not pictured:* Don Russell, Bessie Schmidt.

SECTION TWO

First row: Dean Moyer, Paul Thomann, Jerry Wolfe, Keith Grovenburg, Keith Garwood, Gloria Nichols, Ellen Wright, Jeannette Starnes. *Second row:* Eddie Patten, Dorothy Springer, Gelene Mitchell, Betty Lou Couper, Harriet Gale, Alice Eversdyk, Lynn Noel, Bernard Holderness. *Third row:* George State, Donald Cox, Wilke Pickens, Dick Ritter, Delmar Wyant, Gordon Felper, Arthur Rice, Donald Criswell. *Not pictured:* Roma Matteson, Barbara Johnson, Betty Cline.

SECTION THREE

First row: Ivan Mecker, Tom Parnley, Sam Porter, Carol Lang, Virginia Shannon, Marilee Ahrens, Richard Broders, Hugh Gilliland, David Hicks. *Second row:* Jim Norris, Douglas Sutphin, Roger Thorp, Patricia Padgham, Mary McNally, Donna LaGrange, Betty Oelke, Glen Plum, Harold Bomhoff, Ronald Cox. *Third row:* Elizabeth Peterson, Nora Strand, Mary Evans, Jim O'Brien, Eugene Arment, Ann Bolen, Betty Hubbard, Janice Renaud. *Not pictured:* Beverly Lunn.

JUNIOR HIGH SCHOOL ACTIVITIES

Finale, Second Act of "The White Gypsy" . . . "Virtue will triumph over evil" . . . The little girl, the bridegroom and the schoolteacher from "Holiday Review" . . . Some of the cast of "Holiday Review", Junior High Christmas program.



BOYS' HOMEMAKING CLASS

First row: Miss Stafford, Roger Tharp, Eddie Patten, Tom Parnley, Paul Thomann, Franklin Kester, Don Criswell, Wayne Green, Hugh Gilliland, Richard Broders, Sam Porter, Richard O'Hara, Raymond Sec. *Second row:* Jim Norris, Roger Thorp, Robert Anderson, Bernard Holderness, Carl Ross, Leo Davis, Ronald Cox, Ivan Meeker, Gordon Felper, Arthur Rice, Don Kerby, Bernard Kriegel. *Third row:* Donald Cox, George State, Paul Clayton, Wilke Pickens, Delmar Wyant, Larry German, Jim O'Brien, Eugene Arment, Lester Hill, Harry Scurr, Harold Bomhoff.



When Winter Comes . . .





The "Orange and Black" is our school paper published every three weeks by the members of the commercial and English classes. This year found many added features in the paper—"Bio-Sketch", "Hobbies", "Can You Imagine", "What If—" and "Record Review" are a few. The paper is a mimeographed sheet printed in the O & B room under the direction of Miss Cook and Miss Wilson. Advertising defrays the cost of the paper.

Appearing in the picture at the left are the editor, Pat Ditzler; stencil cutters, Norma Wiley, Edith Bailey and Margaret Hoyt; and sports editor, Kenneth Cessna.

ORANGE and BLACK



WRITING STAFF

First row: Sonya Pedersen, Colleen Roseland, Miss Cook, Ruth Tone. *Second row:* Rosemary Talbott, Ruth Swindal, Mildred Phipps, Carma Graff, Shirley Shope, Harriett Blakeley, Marilyn Simpson. *Third row:* Eugene Smith, Elaine Hillmann, Jean Barkley, Jeanne Sawyer, Jean DeBondt, Clair White, Dennis Dimit.



PRODUCTION STAFF

First row: Pat Pieper, Miss Wilson, Bill Doyle. *Second row:* Janet Johnson, Corkie Mann, Marie Rasmussen, Lucille Durr. *Third row:* Myrtle Lou Sanger, Phil Pentzer, Marjorie Mitchell, Harry Barnes, Nancy Scurr.

ANNUAL BOARD



TOP PANEL

First row: Kenneth Rayl, Shirley Shope, Allan Meyer, Margaret Hoyt, Pat Nolan, Jeanne Sawyer. *Second row:* Ruth Tone, Marilyn Strasser, Miss Rule, Marjorie Mitchell, Miss Carmody, Miss Matlack, Myrtle Lou Sanger, Miss Thompson, Betty Hunter.

BOTTOM PANEL

First row: Darrell Iverson, Beatrice Sutton, Jeanne DeBondt, Eugene Smith, Barbara Barkley, Joan Mintle, John Kaufman. *Second row:* Margaret Jones, Archie Ryan, Wayne Ryan, Russ Sawin, Ronald Hilke, Jerry Laros, Clair White, Ruth Bohstedt, Nancy Scurr, Jack Rilea.

This year marks the return of a complete annual board staff to our high school. The business staff has carried out an extensive subscription and advertising campaign under the direction of Miss Carmody. Concessions at basketball games and the district tournament along with the editing of copy were under the supervision of Miss Thompson. Much work was done on the book proper by the editorial staff under the leadership of Miss Matlack. We of the annual board hope that this book will bring lasting pleasure to you in the years to come.

STAFF

Editor	Margaret Hoyt
Assistant Editor	Pat Nolan
Co-business managers	Maynard Raffety, Eugene Smith
Picture and Sports editor	Allan Meyer
Department Heads	
Seniors	Jean Barkley
Class	Jerry Laros
Grade schools	Marilyn Strasser
Rural schools	Ruth Tone
Hall of Fame	Russ Sawin
Activities	Betty Stanley

Vocal music	Jeanne Sawyer
Band	Jerry Laros
Plays	Tom Playle
Special pages	Marjorie Mitchell
Artist	Myrtle Lou Sanger
Sales	Ronald Hilke, Clair White, John Kaufman
Advertising	Jeanne DeBondt, Darrell Iverson, Nancy Scurr
Bookkeeper	Margaret Jones
Typists	Shirley Shope (head), Ruth Bohstedt, Joan Mintle, Beatrice Sutton, Wayne Ryan, Archie Ryan

BASKETBALL



CONFERENCE STANDINGS

	W	L
Ames	10	0
Boone	6	4
Oskaloosa	5	5
Grinnell	4	6
Marshalltown	3	7
Newton	2	8

First row: Tom Mintle, Howard Neighbors, George Larsen, Serge Phelps, Bob Manly, Rex Hall. *Second row:* Mr. Nelson, Paul Criswell, Jack Wooten, Kenneth Adams, Clyde German, Bob Ahrens, Mr. Lamb.

Grinnell High's fighting Tigers completed a successful season with a total of seven wins and seven losses. Playing some brilliant ball at times, they showed basketball fans some classy ball handling and sharp shooting in every game. With Adams, Criswell, and German back next season, prospects for the future look bright.

SEASON SCORES

Grinnell	Opponent	Score
31	Wilson. Cedar Rapids	36
33	Brooklyn	18
26	Boone	25
41	Brooklyn	22
36	Newton	35
35	Marshalltown	28
32	Oskaloosa	33
27	Tama	26
23	Ames	32
21	Boone	23
30	Oskaloosa	41
29	Newton	25
23	Ames	31
30	Marshalltown	36

COACH LAMB MAPPING OUT A PLAY



ACTION SHOT OF BOONE GAME



First row: Keith DeHart, Dick Bonyata, Jack King, Keith Phipps, Dick Crawford, Martin Hankinson. *Second row:* Del Gaylor, Bud Simmons, Kenneth Burnham, Dennis Ritter, Darrell Casey, Ray MacDowall, Mr. Kurth.



The Freshman-Sophomore squad completed a successful season this year. Coach Kurth worked hard with his boys, who were always ready to go and fight and do their best. The nucleus of the squad were freshmen so the prospects for the future look bright with such players as Crawford, Hankinson, Ritter, and Bonyata.

CHEERLEADERS

A hearty cheer goes to our three cheerleaders of G. H. S! Alice Fair, Velda Larsen, and Marilyn Simpson have done a grand job for our team, school, and community. They have been present at every game, football and basketball, at home or away, rain or shine, and we want to take this opportunity to thank them with the famous "honor yell." Alice, Velda, and Marilyn! RAH! RAH! RAH! RAH! Alice, Velda, and Marilyn!



Alice Fair, Velda Larsen, Marilyn Simpson

COMMERCIAL

Each semester those individuals who meet specific requirements are invited to join the Commercial Club, which is an honorary organization. One educational and one recreational meeting are held each month.

President
Vice-President
Secretary
Treasurer
Social Chairman
News Reporter

First Semester

Ruth Bohstedt
Frances Monroe
Betty Hunter
Louise Simmons
Ruth Parker

Second Semester

Ruth Parker
Ruth Bohstedt
Louise Simmons
Betty Hunter
Frances Monroe
Dorothy Morrison



First row: Dorothy Kal-denburg, Betty Robbins, Betty Hunter, Doris Smith, Doris Burnham. *Second row:* Frances Monroe, Louise Simmons, Jacqueline Lauber, Miss Hatcher, Ruth Parker, Doris Aldrich, Ruth Bohstedt. *Third row:* Dorothy Morrison, Naomi Badger, Betty Thon, Margaret Jones, Adah Worthy, Bervol Thompson.



First row: Michael Hotch-kin, Jack King, Joanne Flanagan, Barbara Bark-ley. *Second row:* Donna Maron, Jackie Swaney, Miss Kornis, Clara Renaud, Jim Jorris. *Third row:* Susan Muckler, Bob Staffanou, Margaret Jones, Stan-ley Korfmaacher, Nancy Duke, Mary Louise Ander-son.

The Latin Club strives to pro-mote fuller appreciation of Roman life and literature. The program in-cluded an initiation ceremony, plays, a Christmas program, and a study of Roman life.

Consuls
Praetor
Quaestor
Aediles
Censor
Adviser

First Semester

Nancy Duke
Jack King
Stanley Korfmaacher
Mary Louise Anderson
Jackie Swaney
Patsy Jo Ohl
Bob Staffanou
Miss Kornis

Second Semester

Barbara Barkley
Michael Hotchkin
Jackie Swaney
Nancy Duke
Jim Jorris
Mary Louise Anderson
Bob Staffanou
Miss Kornis

LATIN

SPANISH

El Club Hispanoamericano, consisting of twenty-six members from both first and second year Spanish classes, chose Panama for the project this year. Each member was required to keep a notebook. A study of Panama's geography, history, industries, and culture was made. The club also enjoyed a meal in real Panama fashion.

First row: Mary Ellen Brock, Dorothy Van Horn, Phyllis Paulson, Nancy Vine. *Second row:* Ruth Tone, Lela Mae Strovers, Carol Beth Ahrens, Myrtle Lou Sanger, John Kaufman. *Third row:* Bill Simmons, Gordon Wells, Mrs. Laros, Robert Preston, Ross Wyss.



First row: Mary Ann Peters, Joanne Hamilton, Darlene Slebiska, Bill Doyle. *Second row:* Graeme George, Louise Jones, Joyce Broyles, James Gault, Marilyn Strasser. *Third row:* Ingrid Hilke, Darrell Casey, Del Gaylor, Conrad Schallau.



First Semester

Second Semester

President	Lela Mae Strovers	Ingrid Hilke
Vice-president	Marilyn Strasser	John Kaufman
Secretary	Myrtle Lou Sanger	Phyllis Paulson
Treasurer	Bill Simmons	Bill Simmons
Treasurer	Mary Ellen Brock	Mary Ellen Brock
Sergeant-at-arms	Gordon Wells	Del Gaylor
Sponsor	Mrs. Laros	Mrs. Laros

FRESHMAN SCIENCE

The Freshman Science Club held ten meetings this year, including two social functions and a guest day. Programs consisted of speeches, experiments, and movies. Seymour Raffety, Hollis Phipps, James Gault, and Paul Ohland assisted Miss Holloway by running the movie projector for various educational science films. Some members attended the Iowa Junior Academy of Science convention at Cedar Falls in April.



FRESHMEN

First row: James Cogley; Nancy Vine; Dorothy Van Horn; Roberta Hanson; Bill Flanagan, sgt.-at-arms, 2. *Second row:* Verleen Brooks; Marilyn Strasser, treas. 2; Joanne Hamilton; Miss Holloway, sponsor; Ingrid Hülke; Shirley Tice. *Third row:* Robert Burham; Harvey Krumm; Conrad Schallan; David Ahrens; Harold Rehberg; Seymour Raffety, sgt.-at-arms, 1.



First row: Bill Doyle; Mary Ellen Brock, sec. 1; Graeme George; Jane Lang, treas. 1, sec. 2; Melvin Tone. *Second row:* Louise Jones; Phyllis Paulson, vice-pres. 2; Esther Ann Jones; Genivieve Fowler; LaRue Matthews. *Third row:* Mac Molison, vice-pres. 1, pres. 2; Roger Mitchell, pres. 1; Gordon Van Donselaar; Paul Ohland; Keith Dempster; James Barkley.



SOPHOMORES

First row: Ed White; Ruth Tone, vice - pres. 1; Barbara Barkley, pres. 1; John Kaufman, monitor 1. *Second row:* Myrtle Lou Sanger; Marilyn Pilgrim, treas. 1; Wayne Hasselbrink, pres. 2; Miss Holloway, sponsor; Carol Beth Ahrens; Jackie Swaney, sec. 1; Bob Staffanou, treas. 2. *Third row:* Donald Milburn; Robert McClure, monitor 2; Robert Preston, vice-pres. 2; Stanley Korfmacher; Ross Wyss, sec. 2; Margaret Jones.

The Sophomore Science Club is a new organization made up of members of last year's Freshman Science Club. The club went to Cedar Falls to the meeting of the Iowa Junior Academy of Science, of which it is a member.

SOPHOMORE SCIENCE

FUTURE HOMEMAKING . . .

F. H. A. — a new organization with plans for the future. It is a national organization whose chief purpose is to increase interest and appreciation of home economics as a subject and a career.

SENIORS & OFFICERS

First row: Ann Lee, treas.; Vineva Nicman, sec.; Leta Mullins, vice-pres.; Shirley Shope, pres.; Phyllis Ruble, historian; Ruth Parker, social chairman; Edith Bailey, parliamentarian. *Second row:* Dorid Kinney; Frances Monroe; Betty Robbins; Sally Inman; Miss Gorsuch, sponsor; Viola Deppe; Bervol Thompson; Dorothy Brand; Janice Dempster; Pat Nolan, songleader. Not shown: Lois Cox.



JUNIOR & SOPHOMORE

First row: Peggy Latham, Doris Smith, Edith Criswell, Carolyn Jackson, Ruth Ann Schmitz, Betty Durr. *Second row:* Blanche King, Marilyn Pilgrim, Wanda Melbourn, Veda Arment, Mary E. Anderson, Marilyn Emmert, Shirley Tibbs, Roberta Tibbs.



FRESHMEN

First row: Dolareze Schnuthorst, Roberta Hanson, Thelma Grovenburg, Maxine Moyer, Mary Lou Brown, Marceil Snodgrass. *Second row:* Wilma Schmitz, Wilma Stoker, Verleen Brooks, Mary Chyna, Joyce Jensen, Marie Charlier, Shirley Evans. *Third row:* Beverly Peterson, Bette Wittenburg, Esther Dunca, Donna Durr, Mary Carter, Joan Sidie, Shirley Tice.



Our chapter was organized in the fall of '46 under the sponsorship of Miss Elaine Gorsuch. Activities included the making of sandwiches to sell at the district tournament, selling tiger headscarves, and the adopting of a needy family to whom a Christmas basket was given. The highlights of the year were the joint F. H. A. — F. F. A. sliding party and "hobo day."

FUTURE FARMERS

The Grinnell chapter of the Future Farmers of America was organized in 1929 and is one of the largest organizations in the state with seventy-two members, eight of which are state farmers, ten associate members and eleven honorary members who act as advisers.

The F. F. A. meets on alternate Tuesdays in the vocational agriculture room. Its members are actively enrolled in vocational agriculture which combines vocational training with actual home project work.

During the past year several boys, along with Mr. Douglass, attended the National F. F. A. Convention at Kansas City and the State Convention at Fort Dodge. This year the officers secured F. F. A. jackets.



TOP PANEL.

First row: Jack Lang, president; Donald Hall, secretary; Robert Ahrens, vice-president; Bob Dimit, recorder; Willis Fritz, treasurer. *Second row:* Donald Latham, Russ Sawin, Everett Pederson, Mr. Douglass, Curtis Ferneau, Merle Burnell, Vaughn Austin. *Back row:* Doyle Cox, Warren Johnson, Harold Fleener, Henry Schultz, Max Stanley, Paul Ahrens.



SECOND PANEL.

First row: James Wisecarver, Dick Clark, Gene Fritz, Bennie Badger, James Cogley, Melvin Tone. *Second row:* Lloyd Durr, Harvey Krumm, David Ahrens, Dean Clark, Roger Mitchell, Mac Molison, Robert Fontinel. *Back row:* Harold Rehbarg, Linville Elam, Leo Barhart, Gordon Van Donselaar, Harold Miller, Hollis Phipps, Lowell Thompson.



BOTTOM PANEL.

Front row: Lyle White, Edward Adkins, Delmar Gildersleeve, Robert Lawthers, Raymond Ahrens. *Second row:* Harold Kirby, LeRoy Schnathorst, Wayne Hasselbrink, Clarence Cogley, Gene Fritz, Harold Schmidt, Edwin Jensen. *Third row:* Robert McClure, Darrell Iverson, Elmer Hillmann, David Schultz, Henry Schmidt, Donald Milburn. *Back row:* Lawrence Krumm, Kenneth Kaisand, Wayne Hendrickson, Keith Paulson, Russell Stoker, Bradford Jones.

F. F. A. ACTIVITIES



Kenneth Kaisand, Elmer Hillman, Wayne Ryan, Max Stanley, Bob Dimit, Wayne Hasselbrink, Darrell Iverson, Wayne Hendrickson.

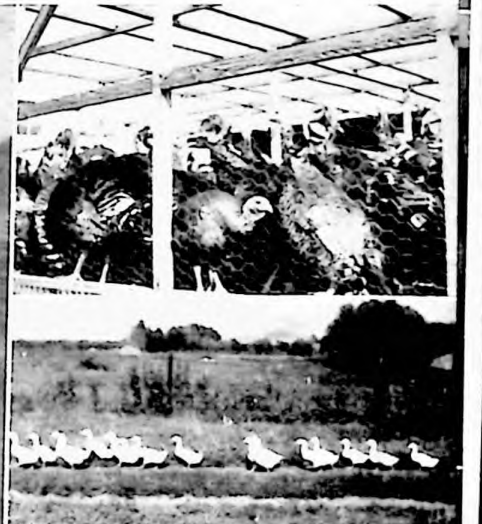
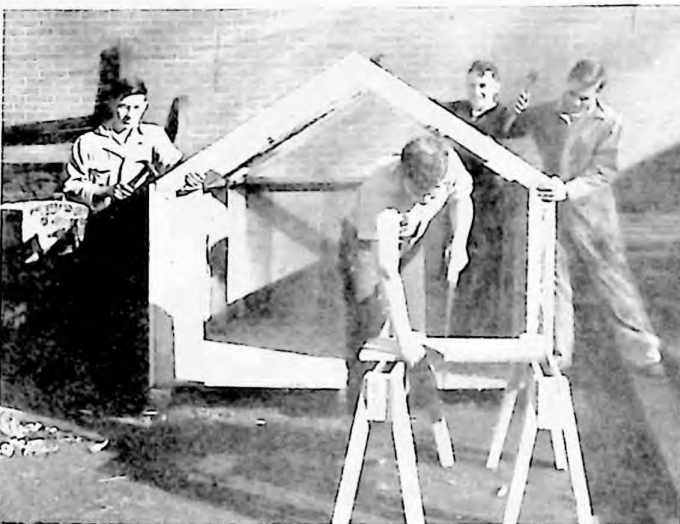
The octet is composed of F.F.A. members who entered a contest at the state F.F.A. convention. The group was directed by Miss Baker.

Kenneth Kaisand, Everett Pederson, Bob Ahrens, Mr. Douglass, Wayne Hendrickson, Max Stanley, LeRoy Schmatthorst, Albert Graff, Henry Schultz, Lawrence Krumm, Russ Sawin.

The basketball squad, coached by Mr. Douglass, played schools of central Iowa with a season total of seven wins and five losses. The second team was undefeated.

F. F. A. PROJECTS

Robert McClure, Corn; Farm Shop Class, Hog House for Roger Mitchell, Gene Fritz, Dave Ahrens with saw, Edward Adkins, Wayne Hasselbrink; Russell Sawin, Jr., Ducks and Turkeys; Gene Fritz, Baby Chicks; Raymond Ahrens, Baby Beeves; Albert Graff, Grand Champion Baby Beeves; Jack Lang, Baby Beef.



SIXTH GRADES



First row: Bob Hankinson, Dale Amendt, Gerold Pasch, Jimmie Luecht. *Second row:* Barbara Deeds, Jon Curtis, Larry Focht, Russell Peterson, Roger Lippincott, Donald Sidie. *Third row:* Marilyn Clark, Billy Wright, Jack Ross, Sally Flanagan, Peter Pedersen, Larry Hughes. *Fourth row:* Lowell Snook, Miriam McNally, Ann Seeland, Colleen Swart, Richard Ahrens. *Standing:* Helen Talbott, Joy Ann Harris, Mrs. Atkinson, Betty Pierce, Patsy Overhulser.



Kay Schallau, pointing to map. *Back row:* Robert Kriegel, Richard Johnson, Anita Walter, Wesley Krumm, Marvin Stewart, Jaqueline Wells. *Third row:* Lee Roy Bullock, Ro-Strawser, Larry Krumm, Burton Bombhoff, Charles Burnham, Edna Mae Fudge, Robert Knutson (standing). *Second row:* Bonnie Parnley, Keith McNary, Carolyn McDowell, Virginia Turner, Charles Sumner. *First row:* Eddie Nelson, Dick Wilson, Mildred Fisher, teacher.



Standing, Ina Sprague, teacher. *Back row:* Shirley Van Draska, Adelma Wright, Cecil Smith, Bernard Criswell, Gary Smith. *Third row:* Dick Roe, Freda Claybrook, Patty May, Maxine Green, Ann Shafer. *Second row:* Merten Aldrich, Barbara Innis, Margaret Kriegel, Donna Triplett, Carl Wittrup. *First row:* Lorna Parkhurst, Kenneth Cooper, Barbara May.

COOPER SCHOOL

At the first of the new school year, Cooper children contributed to a memorial fund for Patty Meyers. Their contributions purchased a record player, and records, which has been marked with an engraved plate, "In memory of Patty Louise Meyers, 1936-1946".

Cooper children continued their traditional Christmas carol singing around the big tree in the downstairs hall at morning and noon for several days before vacation. As they gathered, one by one, the chorus grew in volume and after all had assembled they sang for a short period with one of the fifth grade boys leading informally. When the last song began, the grade groups rose quietly and moved towards their own rooms singing all the way.

KINDERGARTEN

Dorothy Paine, teacher, Clara Phillips, music teacher, Mary K. Hunter, Eyan Evans, Michael Morris, Jocelyn Cox, Barabara Everton, Connie Roop, Anne Hamilton, Michael Smith, Sandra Lunn, Edwin Koger, Mary Lou Mauer, David Klausner, Junior Larsen, Katherine Jelinek, Jo See Billings.



FIRST GRADE

Sally Squire, Jock Andrews, Judith Kahler, Richard Eyestone, Margaret Powell, Ronald Holblom, David Palmer, Frank Hagen, Doramae Coop, Lylee Pimlott, Jerry Armstrong, Marjorie Felper, Carol Pugh, Sharon Long, Frederic Brock, Dianne Cox, Richard Bowen, Linda Souter, Wanda Poling, Mrs. Grace Haag, teacher.



Nancy Foster, Paul Green, Nancy Ulrich, Richard Vogel, Larry Paul, Agnes Harris, Rodney Brown, Thomas Brobyn, Karen Vandermiede, Karen Dodson, Karen Breiting, Perry Ann Harris, Thomas Parsons, Michael Palmer, Danny Slagel, James Ahrens, Max Brown, John Talbott, Lowell Hockett.





SECOND GRADE

At board: Billie Werneburg, Kent Simmons. *Reading circle:* Ruth Paine, teacher, Patty Peak, Johnny Renaud, Ann DeLong, Joan Green, Dick Barr, Karol Moyer, Kathleen King, Ramsay McKey, James Mitchell. *In seats:* Bobby Locker, Frank James.



Standing: Danny Hillman, Jerry Williams, Charlotte Strand. *Seated at table:* Margaret Hoffstatter, Wayne Olson, Mary Jane Bullock, Barbara Edwards, Louise McMeekin, Richard Norris. *In seats:* Claude Krumm, Jerry Monroe, Joel Prescott, Gael Doane, Virginia Krumm.



THIRD GRADE

Myrtle E. Parkes, teacher. Jack Ritter, Karen Pederson, David Andrews, Danny Bomhoff, Karen Hughes, Gary Buffum, Margaret Bullock, Marilyn Malloy, Raymond Harris, Harold Moyer, Phyllis Locker, Karen Kahler, Russell Burnham, Jack O'Brien, Harriett Martens, Sandra Souter, Larry Hagen.



Naney Everton, Nancy Oelke, Harriett Penquite, Patricia Collum, Charlene Vogel, Larry Collum, Carol Briggs, Sandra Porter, Jimmy Cunningham, Celeste Gaylor, Orval Matherly, Meredith Breiting, Michael McNally, Terry Housman, Jimmie Niner, Charle Curtis.

FOURTH GRADE

Isola Eggert, teacher.
 John Norton, David De-Long,
 Judith Bunch, James Swaney,
 Kay Hough, Patty Parsons,
 Charles Norris, John McClenon,
 Larry Millhollin, Robert Hockett,
 Chuck O'Brien.



Agnes Hillmann, Marvin Pimlott,
 Mary Talbott, Orene Jensen,
 Ronald Krumm, Judy Brown,
 Hilliard Turner, Dale Saunders,
 Douglass State, Vivian Kahler,
 John Lang.



FIFTH GRADE

Mrs. Helen S. Pedersen, teacher.
 Max Poling, Bonnie Roop,
 Paul Beck, Joyce Mitchell,
 Jimmy Wilcox, Jimmy Urfer,
 Helen Ohland, Lynn Vine,
 Modesta Talbott, Robert Russell,
 Beverly Long.



Virginia Barr, Arthur Mann,
 Ardis Gaylor, Lorraine Graff,
 Marilyn Coop, Lois Locker,
 Marilyn Clark, Janet Koger,
 Charles De-Long, Ruth Preston,
 Sandra Kelley.



DAVIS SCHOOL

The school year at Davis centered around observance of the Iowa centennial. The Iowa banner was displayed throughout the year, Meredith Willson's "Iowa" was taught in all the music classes and Iowa history was a fall project of the fifth grade. The culmination of the formal observance came on November 15 with a program to which each grade made a contribution. Among the highlights of the program were the styles of the past with real costumes gathered around Grinnell, a display of historical objects and readings from a collection of old readers, including McGuffies'.



KINDERGARTEN

Frank LaGrange, Carol Ann Johnson, Jo Ann Tiedeman, Irene Murk, Bertha Smith, teacher, Marilyn Caldwell, Donna Jean Butler, Ronald Miller, David Innis, Charles Foster, Dorothy Caldwell, Floyd Allen, Sue Cortright, Patricia Miller, Larry Ross, Judith Sumpter, Carol Ross, Kenneth Shook, Sandra Galloway, Donald Wright, Chuck Frisbie, Dorothy Mae Winchell, Patty Steen, Judith Simpson, Jerry Martin, Lloyd Sisco.



FIRST GRADE

Jerry Beck, Gordon Gauss, Janet Innis, Carol Jones, Duane Claybrook, Kathryn DeLuhery, teacher, Sandra Lee Clifton, Evelyn Krumm, Faye Cortright, Larry Wells, Larry McGriff, Jerry Robison, Glen Frisbie, Janice Turner, Denton Galloway, Dennis Fleener.



Silas Holland, Dean Witrup, Esther Crawford, Richard Winchell, James Cooper, Barbara Simpson, Alice Green, Larry Reed, Sandra Lee Pickens, Judy Renaud, Joyce Reed, Mary Lou Lester, Sally Ann Roe, Audrey Criswell, Betty Diehm, James Gould. Absent: Donna Yeager.

SECOND GRADE

Patty Cooper, Barbara Triplett, Gladys Lester, Billy Beason, Bobby Lester, Pearl Martens, Dorothy Walker, Louis Taylor, Barbara Jean Nichols, James Van Draska, Larry Hoff, Buddy Vulysteke, Charles Simpson, Eldon Criswell.



Jo McNary, Linda Benson, Peggy Haines, Sam Mullins, Nadine Pierce, Juanita Allen, Danniene Miner, Betty See, Peggy Allbee, Mary Davis, Mary Louise Nichols, Sherry Adkins, Janet Mithelman.



THIRD GRADE

Front row: Victor Vulysteke, Sandra Miner, Charles Sargent, Judy Browning, Frances Gallo-way, Thomas Sanger. *Center:* Robert Renaud, Ethel Trotter, teacher, Richard Wells, Kay Gould, Carol Matteson, Jack Fair, Darlene McDonald, Karen Ross. *Second row:* Beverly Beason (standing), Carroll Taylor, Billy Robison, Allan Upchurch, Patty Schaffer, David McGinty. *Absent:* John Davis.



On floor: Donald Walker, Ralph Winchell, George Barhart, Larry Kriegel, Clair McGriff, Charles Reeves. *Seated:* Yvonne Streeck, Vernon Gibson, Beth Burr, Rachel Innis, Betty Innis. *Second row:* Sandra Cox, Charles Routier, Dorothy Walker, Barbara Gerard. *Back row:* Melvin York, Floyd Haines, Peter Carlson, Darrell Sul-yers.





SECOND GRADE

Leslie Routier, Eldon Thompson, Marie Wilderdyke, Lila Patten, Jerry Hay, Robert Clapp, Wallace Wittenburg, Ruth Pedersen, teacher, Patricia Flanagan, Kathryn Shook, Bruce Hicks (on chair), Robert Shanks (in front of desk). Absent: Eugene Heinle.



At easel: Leota King. First row, back to front: Judith Beaty, John Anderson, Elizabeth Lincoln, Bill Barnes, Larry Criswell. Second rows Dave Adkins, Robert Sowerwine, Sharp Lannom, Martha Keeney, John Ditzler. Third row: Mary Ransom, Davie Johnson, Janice Frazier, Billy Smith, Kay Smith.



THIRD GRADE

Loretta Cooper, Geraldine Garwood, Beverly Oliver, Shely Hay, Gerry Ross, Norman Davis, Larry Don Tharp, Herman Wilderdyke, Linda Carter, Guy French, Harriett Nolte, Hollis Sisco, Jack Byers, John Gilliland, Mrs. Charles Wood, teacher.



At blackboard: Charles Arment, Delbert Crawford, Emily Seeland, Jack Holmes, Bobby Ballard, Richard Ramsey. Seated: Gretchen Mart, Karen O'Hara, Edwin Vandenoord, Nancy Appgar, Hannah Gale. Front row: Billy Clark, Darlene Johnson, Karen Harbison, Robert Parmley.

FOURTH GRADE

Eula Alexander, Spencer Porter, Frances Focht, Leroy Smith, Raymond Pearson, Charles Gilliland, Bobbie Thomazin, Tommy O'Hara, Bill Kearney, Fred Johnson, Joan Snook, Genevieve Emerson, teacher, Lawrence Routier, Earl Peterson, Marjorie Cline, Maxine Dhondt.



Robert Holmes, Mildred Dhondt, Roberta Rickard, Martin Rickard, Gary Menges, Olive Caldwell, Max Bennington, Sally Simmons, John Thoman, Larry Koger, Billy Shanks, Nancy Patten, Charles Reed.



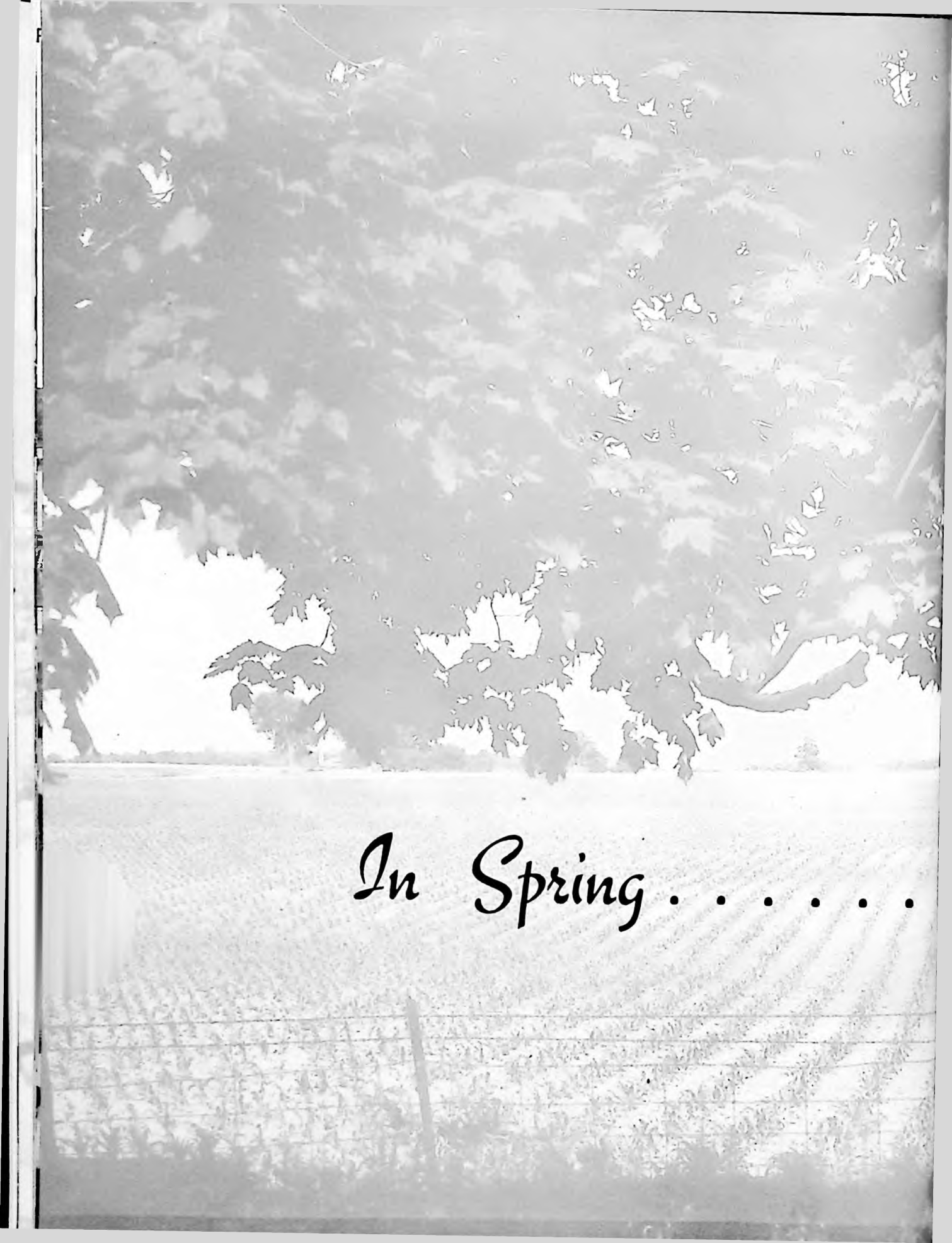
FIFTH GRADE

Richard McFarland, Carl Davis, Marjorie Ditzler, Patricia Patten, William Dahl, Dean Starnes, Ann McNally, Donald Cooper, Betty Kester, Nettie Bayley, teacher, Carroll Smith, Barbara Segrest, Paul Phillips.



Charles Clapp, Joyce Garwood, Rex Murphy, Louise Cline, Denvil Oliver, Shirley Grovenburg, Irma Slebska, Kenneth Duncan, Charlotte Garwood, Bill McNary, Maridean Hotchkin, Virginia Bennington, Jane Barnes, Don Hummel.





In Spring



BAND

When the members of the G. H. S. Band took their proper seats in the old bandroom at the beginning of this school year, they found a different band wielding the baton. That man was Arthur C. Hills, formerly of the United States Army. The year's activities began with the football season and marching band. Making use of his army experience, Mr. Hills brought forth a fine marching group for presentation at our home football games.

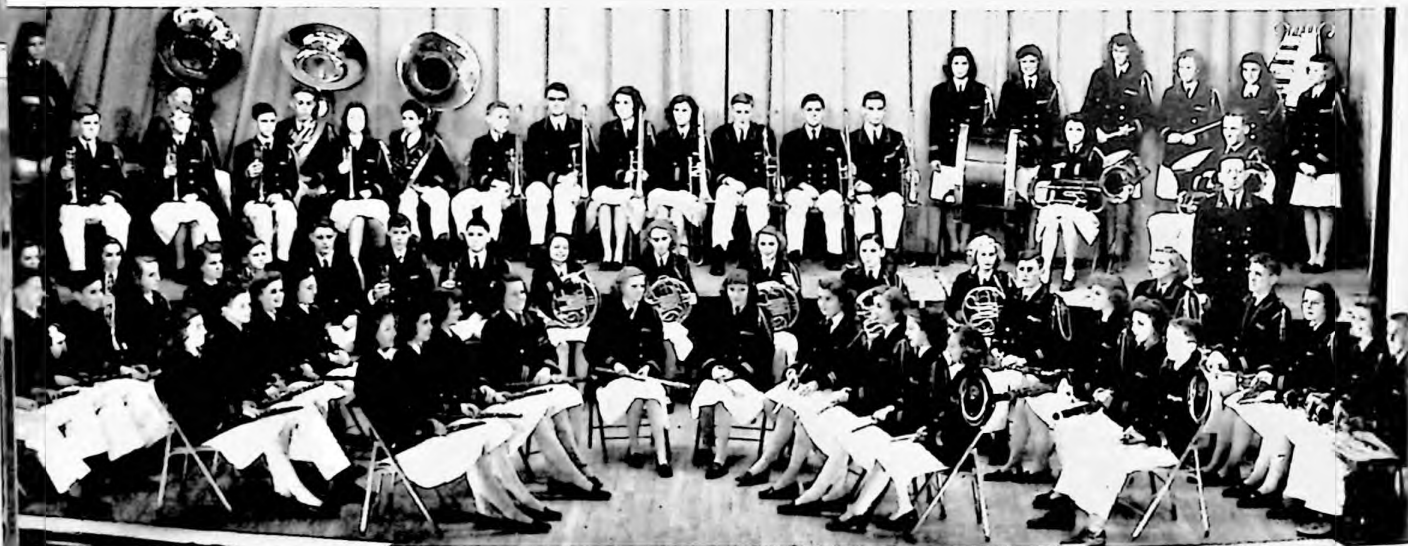
After the marching season the band began its concert work, presenting a concert of popular pieces in early December. A second winter concert, scheduled for February, was postponed when Mr. Hills became ill. His place on the podium was taken temporarily by Robert Bouma.

At pep meetings and home games the pep band was on hand with appropriate music. Several small instrumental groups provided entertainment for various organizations in this and neighboring towns.

To aid in operating the band several student officers were elected. These officers were: president, Gene Smith; vice-president, Richard Knowles; quartermasters, Kenneth Cessna and Maynard Raffety; and secretary, Rosemary Talbott. Our librarians were Pat Nolan, Sonya Pedersen, and Harriett Barnes.



Pat Ditzler, Margaret Hoyt, Barbara Bailey, Sonya Pederson (on lower step).

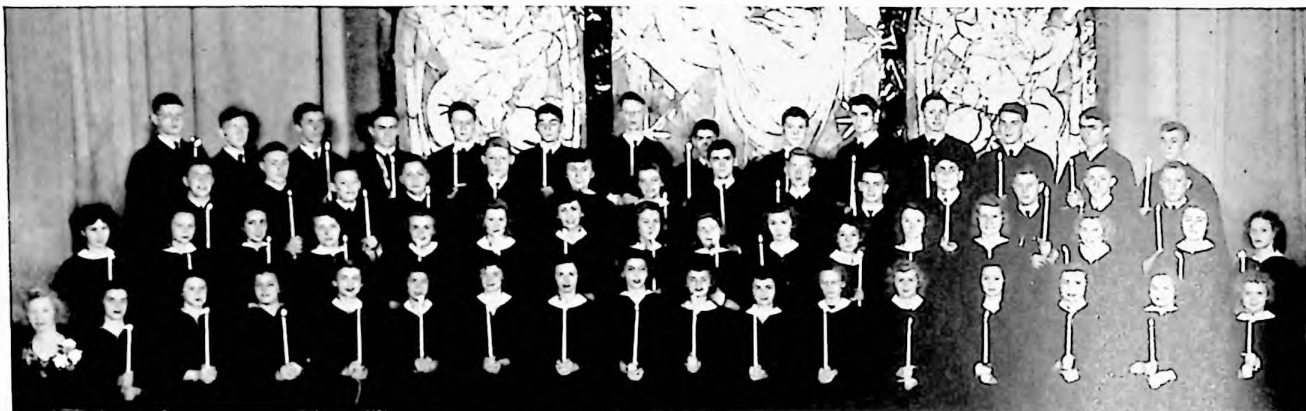


FLUTES—Betty Kaisand, Jane Lang, Donna Maron, Ann Peters, Carolyn Jackson, Patricia Padgham. OBOES—onard Schallau, Barbara Bailey. BASSOONS—Margaret Hoyt, Margaret Jones, Colleen Roseland. B-FLAT CLARINETS—Jeanne Sawyer, Marilyn Strasser, Louise Jones, Joan Mintle, Ruth Swindal, Stanley Korfmaacher, Roberta Hanson, Beatrice Sutton, Orville Hanson, Del Gaylor, Billy Doyle, Betty Hubbard, Donna McMullen. BASS CLARINET—Norman Dille. ALTO SAXOPHONES—Jack Rilea, Janice Dempster, Leland Billings. TENOR SAXOPHONES—Shirley Shope, Darrell Casey. BARITONE SAXOPHONE—Nancy Scurr. CORNETS—Mildred Phipps, Jerry Hagen, Evelyn Pedersen, Seymour Raffety, Robert Staffanou, Robert Preston, James Barkley, Dean Martin, Carol Lang, Betty Oelke. FRENCH HORNS—Imogene Newcomer, Ingrid Hilke, Susan Muckler, Graeme George, Elizabeth Peterson. BARITONES—Jerry Laros, Lela Mae Strovers. TROMBONES—Maynard Raffety, Eugene Smith, John Padgham, Jackie Swaney, Joan Fritz, Kenneth Rayl, Lyman Walter. TUBAS—Kenneth Cessna, Gordon Wells, Melvin Tone. PERCUSSION—Joan Anderson, Phyllis Ruble, Rosemary Talbott, Gladys Smith, Thomas Playle, Mary Grandstaff, Joanne Larson.

FIRST COLUMN: *Brass quintet:* John Padgham, trombone; Ingrid Hilke, french horn; Iela Mae Strovers, baritone; Robert Preston, cornet; Mildred Phipps, cornet. *Trombone quartet:* John Padgham, Joan Fritz, Jackie Swaney, Eugene Smith. *French Horn quartet:* Imogene Newcomer, Graeme George, Susan Mueckler, Ingrid Hilke. *Bass sextette:* Jerry Laros, baritone; Eugene Smith, trombone; Kenneth Cessna, tuba; Imogene Newcomer, french horn; Jerry Hagen, cornet; Mildred Phipps, cornet. *Wood wind quintet:* Graeme George, french horn; Conard Schallau, oboe; Margaret Jones, bassoon; Betty Kaisand, flute; Billy Doyle, clarinet. *Saxophone quartet:* Jack Rilea, alto; Janice Dempster, alto; Shirley Shope, tenor; Nancy Seurr, baritone. **SECOND COLUMN:** *Band officers:* Kenneth Cessna, Mr. Hills, Gene Smith, Sonya Pedersen, Rosemary Talbott, Pat Nolan, Harriett Barnes. Absent: Maynard Raffety, Richard Knowles. *Flute quartet:* Betty Kaisand, Donna Maron, Patricia Padgham. *Woodwind trio:* Jane Lang, flute; Margaret Hoyt, bassoon; Jeanne Sawyer, clarinet. *Mixed clarinet quartet:* Roberta Hanson, B-flat clarinet; Stanley Korfmacher, B-flat clarinet; Norman Dille, bass clarinet; Billy Doyle, B-flat clarinet. *B-flat clarinet quartet:* Jeanne Sawyer, Joan Mintle, Louise Jones, Marilyn Strasser.



VOCAL MUSIC



A CAPELLA CHOIR

First row: Miss Baker, Wanda Thompson, Pat Ditzler, Joan Mintle, Colleen Roseland, Gladys Smith, Rosemary Talbott, Janet Johnson, Pat Pieper, Beatrice Sutton, Ruth Ann Schmitz, Betty Kaisand, Sonya Pedersen, Mildred Phipps, Ruth Swindal, Cora Vallean Mann, Lucille Durr. *Second row:* Mary Louise Anderson, Priscilla Moore, Nancy Duke, Mildred Withrope, Nancy Scurr, Ruth Bohstedt, Marjorie Mitchell, Jeanne Sawyer, Pat Nolan, Donna Maron, Naomi Ferneau, Virginia Laymiller, Elaine Hillman, Susan Mueckler, Joanne Fritz, Marianna Willer. *Third row:* Wayne Ryan, John Padgham, Larry Livingston, David Marlowe, Clair White, Dorothy Brand, Janice Dempster, Roy Bryan, Charles Anthony, Maynard Raffety, Ross Wyss, Wayne Hasselbrink, Tom Mintle, Robert McClure. *Fourth row:* Dennis Dimit, Gordon Wells, Wayne Hendrickson, Raymond Larsen, Elmer Hillmann, Max Stanley, Robert Upchurch, Robert Dimit, Darrell Casey, Floyd Hunter, Kenneth Kaisand, Glenn Bell, Kenneth Rayl, Darrell Iverson.

If you had happened to glance into the music room during any fourth period this year, you would have seen a group of students enthusiastically singing. They were the members of one of the three large organizations of the vocal department—boys' glee club, girls' glee club, or the a capella choir. Besides these large groups, there were various ensembles. They included several girls' sextets, boys' quartets and a mixed quartet. A variety of soloists were given experience, too.

Programs presented by the vocal department included a Christmas program and a spring formal concert. The large groups, ensembles, and soloists were entered in the contests at Vinton and Boone. The vocal departments this year was under the direction of Miss Christine Baker.

During the fall season the students carried out a very successful magazine campaign over a period of two weeks. This was done in an effort to raise money for the department and everyone cooperated wholeheartedly.



GIRLS' GLEE CLUB

First row: Joan Mintle, Velda Thompson, Harriett Blakley, Mary Ann Pugh, Dorothy Van Horn, Jane Lang, Mildred Phipps, Clara Renaud, Betty Kaisand, Jewell Jensen, Doris Burnham, Colleen Roseland, Janet Johnson, Wilma Schmitz, Wanda Thompson, Naomi Ferneau. *Second row:* Pat Ditzler, Marceil Snodgrass, LaRue Matthews, Mary Ellen Brock, Donna Walker, Mary Ann Peters, Rosemary Talbott, Pat Pieper, Beatrice Sutton, Ruth Ann Schmitz, Lucille Moore, Lucy Durr, Corkie Mann, Ruth Swindal, Sonya Pedersen, Phyllis Johnson. *Third row:* Marjorie Mitchell, Alice Greenland, Virginia Laymiller, Janice Dempster, Ruth Bohstedt, Pat Nolan, Margaret Hoyt, Jeanne Sawyer, Esther Ann Jones, Susan Mueckler, Carol Beth Ahrens, Marianna Willer, Jackie Swaney, Marilyn Strasser, Nancy Vine, Elaine Hillmann. *Fourth row:* Louise Jones, Joan Fritz, Marilyn Sammons, Nancy Duke, Margaret Jones, Mary Louise Anderson, Dorothy Brand, Priscilla Moore, Wanda Jackson, Nancy Scurr, Mary Ditzler, Joyce Broyles, Joan Hamilton, Myrtle Lou Sanger, Marie Rasmussen.

BOYS' GLEE CLUB

Front row: David Talbott, Michael Hotchkins, Jerry Dimit, Bill Doyle, Graeme George, Kenneth Oltrogge. *Second row:* Raymond Ahrens, Ed White, Sey-Raffety, Wayne Hasselbrink, Bob Dimit, Kenneth Bell, Tom Mintle, Maynard Raffety, Darrell Iverson, Bob McClure. *Third row:* Charles Anthony, David Marlowe, Wayne Ryan, Darrell Casey, Harley Badger, Max Stanley, Roy Bryan, Wayne Hendrickson, Kenneth Kaisand, Floyd Hunter. *Fourth row:* Elmer Hillmann, Gordon Van Donselaar, Clair White, Raymond Larsen, Kenneth Rayl, John Padgham, Gordon Wells, Bob Upchurch, Jerry Laros, Dennis Dimit.



SMALL GROUPS

Junior sextet: Corkie Mann, Joanne Fritz, Patty Pieper, Ruth Ann Schmitz, Colleen Roseland, Priscilla Moore. *Senior sextet:* (in front) Joan Mintle, Ruth Swindal, Rosemary Talbott, Mildred Phipps, (in back) Marjorie Mitchell, Jeanne Sawyer. *Boys' Quartet:* (in front) Roy Bryan, Bob Upchurch, (in back) Glen Bell, Dennis Dimit. *Freshman trio and sextet:* (in front) Louise Jones, Mary Ann Peters, Joyce Broyles, (in back) Wilma Schmitz, Nancy Vine, Joanne Hamilton, Esther Ann Jones, Jane Lang, Marilyn Strasser. *Boys' quartet:* (in front) Wayne Hasselbrink, Bob Dimit, (in back) Kenneth Rayl, Wayne Hendrickson. *Officers and accompanists:* (in front) Colleen Roseland, Joyce McCain, accompanists; Sonya Pedersen, librarian; (in back) Roy Bryan, Margaret Hoyt, co-presidents; Ruth Bohstedt, secretary; Gordon Wells, librarian; Maynard Raffety, treasurer; John Padgham, Dennis Dimit, librarians; Darrell Iverson, secretary; Pat Nolan, librarian; Miss Baker. *Sophomore quartet:* (in front) Nancy Duke, Donna Maron, Virginia Laymiller, Susan Muckler. *Mixed quartet:* (in back) Kenneth Kaisand, Ruth Bohstedt, Elaine Hillmann, Gordon Wells.



CREATIVE WRITING

The creative writing plays were first produced in 1935 and have been a regular highlight on the school calendar ever since. The class is headed by Miss Cook and the plays this year were produced under the direction of Miss Cook and Miss Nelson. This year four plays were chosen for regular production and a fifth was presented at an assembly.

"IT'S A DATE" by Gene Smith

Mrs. Fletcher	Harriett Blakely
Mr. Fletcher	Clair White
Jack Fletcher	Jerry Laros
Judy Fletcher	Ruth Swindal
Dot Chandler	Carma Graff
Madge Thornton	Jean Barkley
Jim Fields	Serge Phelps
Little Audrey	Pat Ditzler
Ted Nichols	Harry Barnes
Bud Jensen	Dennis Dimit

"It's a Date", a play by Gene Smith, involves the love-life of several teen-agers and their efforts to secure dates for the Senior Prom.

The boys' plan of holding the girls in suspense almost backfired with the arrival of Ted's handsome cousin Jim. But all was well in the end with the revelation of Jim's marriage, and the girls accepted the boys' invitation to the prom.

"AND SO GOES LIFE" by Marilyn Simpson

Janie Westmore	Marilyn Simpson
Candy Richardson	Jeanne Sawyer
Julie Parsons	Elaine Hillmann
Mipsy Mayfare	Margaret Hoyt
Matt Johnson	Dennis Dimit
Tommy McDonald	Gene Smith
Joe McGeorge	Jerry Laros
Voice	Wayne Hasselbrink

"And So Goes Life", written by Marilyn Simpson, was a dramatic musical sketch of a feminine vocalist's attempts to hold a band together while its leader, Johnny, also her friend, was in the Army.

The play was based on the song "Laura" and revolved about several musical acts. The climax came with a telegram announcing the accidental death of Johnny in an airplane crash.

"THE COURTSHIP OF AUNT AGATHA" by Rosemary Talbott

Jack Fairchild	Gene Smith
Chris Fairchild	Milly Phipps
Mrs. Fairchild	Betty Stanley
Miss Agatha Scott	Shirley Shope
Mr. Burroughs	Clair White
Mr. Montague	Thomas Playle

"The Courtship of Aunt Agatha", from the pen of Rosemary Talbott, told of the efforts of a brother and sister to find a husband for their aunt who had taken residence in their home.

Jack and Christine, wishing to rid their household of their overly meticulous Aunt Agatha, attempted to marry her to an advertiser in the "Lonely Hearts" column, but the efforts were thwarted by Aunt Agatha's unwillingness. The day appeared saved when an old suitor of Aunt Agatha's suddenly arrived, but announcing her marriage to her old beau, Aunt Agatha revealed her intentions of remaining with the Fairchilds and having her husband live there too.

"MAKE MINE CHOCOLATE" by Milly Phipps

Ginny Barnes	Rosemary Talbott
Phillip Barnes	Kenny Cessna
Caroline Fraser	Pat Ditzler
Susan Abbott	Jeanne DeBondt
Wally Beragon	Jack Rilea

"Make Mine Chocolate", whose author was Milly Phipps, was the story of an unsuccessful attempt on the part of three girls to make the acquaintance of several out-of-town boys.

Two of the girls, Caroline and Susan, put their names, addresses, and phone numbers, along with those of Ginny's on the steering wheel of a jalopy which they supposed to be owned by some out-of-town boys. It turned out to be Ginny's brother Phil's car. Everyone then drowned their embarrassment in a double chocolate soda.

"FOREVER UNCHANGED" by Margaret Hoyt

Goeffry Barnes	Tom Playle
Doug Stewart	John Padgham
Tom Morrison	Jerry Laros
Voice of Operator 86US	Jack Pasch
Voice of General Caldwell	Robert Norton

"Forever Unchanged" by Margaret Hoyt was produced at an assembly program on March 21. It dealt with the first rocketship flight to Mars and took place in the year 2047. Jeff, Tom, and Doug found themselves stranded in the universe due to the faultiness of their steering device. Urgent radio calls to the earth proved to be of no help and the three young men decided that suicide was inevitable. Thus with a drink of floronine the first attempt to reach the planet Mars came to an end. Dennis Dimit was replaced by John Padgham and Jack Pasch took the part held by John.



"IT'S A
DATE"

by Gene
Smith



"THE
COURTSHIP
OF AUNT
AGATHA"

by Rosemary
Talbot



"AND SO
GOES LIFE"

by Marilyn
Simpson



"MAKE
MINE
CHOCOLATE"

by Milly
Phipps



SENIORS

Once again Grinnell High School bids good-bye to a class of eager seniors. When entering G. H. S. four long years ago, we had high ambitions, the first being to show the seniors of that year that we were important too! We did this by shoving and pushing in the halls until they ran when they saw us coming. Along the studying line we found that general science gave us an opportunity to become fascinated by our world and also gave us an amusing lesson in human nature. Whenever Miss Holloway put out the rulers for us to use, a mad rush ensued as all those without rulers nearly trampled their fellow-classmates in an effort to grab one. Speech class was a highlight once a week, and at Christmas time during that gala freshman year, we sent three of our number to Des Moines to broadcast over KSO on the subject of Christmas Seals. They were Margaret Hoyt, Richard Knowles, and David Hamilton. And, of course, there was our pride and joy, Dummy Neighbors, who made the football team while only a little (?) freskie.

The second year found us more subdued (I wonder). We began to decide which activities appealed to us most. A large variety to choose from was available—band, boys' and girls' glee clubs, mixed chorus, sports, F.F.A., sports, commercial and Latin clubs, Orange and Black. We spent a busy year becoming more accustomed to high school life and suddenly discovered at the close of that year that half of our high school days were over and that we were "upper-classmen!"

Our junior year brought us the feeling that at last we were running things. We became organized and chose our sponsors, Miss Piper and Mr. Lamb. Our two presidents were Gladys Smith the first semester and Eugene Smith the second. The big doin's of our class was the junior-senior prom. With Joan Anderson as head of the committee, a lovely evening was planned and we found ourselves being properly chaperoned by a huge clown dressed in polka dots at one end of the gym. For those who were engaged in band work, this was indeed a big year. We literally "mowed 'em down." Twenty-two Division I's in the state contest held here at Grinnell brought us state-wide fame.



In Memoriam

HERMAN CRISWELL

Herman was noted while in high school for his friendly smile and athletic ability. He always had a pleasant word of greeting and a smile to go with it, and thus won many friends. He was a star basketball player during his sophomore year and the sound of "Yea! Criswell!" was frequently heard at the games. The future looked bright for Herman, when during the summer of 1945, he lost his life in an automobile accident.

November 27, 1927
June 13, 1945



Front row: Molly Hoskins, girls' treas. I; Norman Hall, boys' treas. I; Rosemary Talbott, pres. I; Barney Fleener, vice-pres. I; Shirley Shope, sec. I. Second row: Gar Lamb, sponsor; Bob Manly, pres. II; Pat Nolan, vice-pres., II; Ronald Moen, boys' treas. II; Marjorie Mitchell, girls' treas. II; Floyd Hunter, sgt.-at-arms, II; Ruth Bohstedt, pictured in place of Jack Lang, sec. II; Joan Piper, sponsor. Not in picture: Jack Lang and Donald Herbert.

And then at last we found ourselves seniors. My how the time flew! And look who pushed us around—the freshies of the class of 1950. And we accepted it with grace and realized that we really weren't so important after all. We didn't let that bother us, however. We had fun; oh! how we had fun! The Youth Center was opened for our pleasure and recreation. There were football games, basketball games and the tournaments. There were all school parties, pep meetings, and class-sponsored assemblies. There were the annual board farce and the spring play; and, of course there were the creative writing plays. There were the vocal and band concerts and the vocal formal dane at Christmas time. And we loved every minute of it. And then graduation—our graduation, with congratulations pouring down around us. All those events just for seniors were at last ours. Baccalaureate (we in our caps and gowns marching solemnly down the aisle); the prom when we were the guests of the juniors; Senior YW, lovely as always, only seeming so much more so for us who were graduating; class day with music and speeches by our friends that brought back so many memories; and finally our diplomas—all this at the close of our four years in high school. On that evening in May we were graduated with the auditorium full of beaming parents and friends. So, G. H. S., we bid you good-bye, but we won't ever forget our high school days and we hope others who will in the future wander through your echoing halls, will remember, too, the lasting pleasures found only in high school.

AWARD WINNERS

- Preston's Award Howard Neighbors
- Valedictorian Betty Hunter
- Salutatorian Margaret Hoyt

CLASS



Robert Ahrens Agriculture
All things come to him who will but wait.

Anna Allen Commercial
A quiet pleasing manner wins many friends.
Y.W.C.A. 1-2-3-4.

Joan L. Anderson English
Man has his will, but woman has her way.
Girls' Glee Club 1; Mixed Chorus 2-3; Band 1-2-3-4; Snare drum solo 3-4; drum ensemble 2-3-4; Science Club 1, vice-president; Junior class vice-president; Sweetheart of Honor G. 2-3; Y.W.C.A. 1-2-3-4; O & B 4.

Vaughn Austin Agriculture
'Tis pleasant, sure, to see one's name in print.
Boys' Glee Club 3; Mixed Chorus 3; F.F.A. 1-2-3-4; Science Club 1.

Joyce Baarda General
She's not as meek as she looks.
Girls' Glee Club 1; Y.W.C.A. 1-2-3-4; F.H.A. 3, vice-president 3.

Edith May Bailey General
She doeth all things well.
Y.W.C.A. 1-2-3-4; O & B 4; F.H.A. 4.

Warren Bailey
Few things are impossible to diligence and skill.
G.E.D. Tests.

Jean J. Barkley English
She is one in a thousand and capable is her middle name.
Science Club 1; Latin Club 2; Y.W.C.A. 1-2-3-4, squad leader 4; O & B 4; Annual Board 4; Class secretary 3; "It's a Date" 4.

Ruth V. Beck General
You cannot do justice to your work unless you enjoy it.
Y.W.C.A. 1-2-3-4.

Glen Bell English
Where joy and duty clash—let duty go to smash.

Harriett Anne Blakely English
A success to be sure.
Girls' Glee Club 1-2-3-4; Mixed Chorus 3-4; Science Club 1; Y.W.C.A. 1-2-3-4, squad leader 4; O & B 4; "It's a Date" 1.

Ruth Madge Bohstedt Commercial
The likes of you make the whole world glad.
Band 1; Girls' Glee Club 1-2-3-4, secretary 4; Mixed Chorus 2-3-4, Mixed quartette 4; Latin Club 2; Commercial Club 2-3-4, president 4; Y.W.C.A. 1-2-3-4; Annual Board 1; Senior class secretary 1.

Peter Bonyata English
If music be the food of love, play on.
Football 2-3-4; Basketball 3; Track 2-3-4; Junior class treasurer 3.

Dorothy J. Brand General
Preparation is a safer guide than luck or inspiration.
Lynnville High School 1-2-3; Girls' Glee Club 1-2-3-4; Basketball 1-2-3; Dramatics 2-3; Mixed Chorus 4; Y.W.C.A. 4; F.H.A. 4; G.A.A. 4.

Roy Bryan General
And when a lady's in the case, all other things give place.

Russell E. Bump College Preparatory
He's very fast on the track but with the girls he's slack.
Football 1-2-3; Basketball 1-2-3; Track 1-2; Honor G Club 1-2-3-4.



CLASS



Merle Burnell

For him life is good.
F.F.A.; F.F.A. basketball.

Agriculture

Barbara Jean Cogley

A dish fit for the gods!
Science Club 1; Y.W.C.A. 1-2-3-4; F.H.A. 3.

General

Richard Lee Covault

Now the battle's ended.
Stage crew 1-2.

English

Doyle Cox

'Tis now the time for pleasure—let everyone be gay.

Agriculture

Lois Waunetta Cox

Be wiser than other people if you can, but do not tell them so.
Y.W.C.A. 1-2-3-4; F.H.A. 4.

General

Jeanne L. DeBondt

A merry life we lead and free—a life of endless fun.
Science Club 1, treasurer; Student Council 4; Y.W.C.A. 1-2-3-4; O & B 2-3-4; Annual Board 4; "A Girl in Every Port" 2; "Brother Goose" 3; "Make Mine Chocolate" 4.

English

Janice G. Dempster

Live in sunshine and you will live longer.
Band 1-2-3-4, Saxophone quartet 4; Girls' Glee Club 4; Mixed Chorus 4; Y.W.C.A. 1-2-3-4; F.H.A. 4.

General

Viola E. Deppe

Soon to the married life she will go, where love birds sing and flowers grow.
Y.W.C.A. 1-2-3-4; F.H.A. 4.

General

Norman Dille General
Variety is the spice of life.
 Band 1-2-3-4; Basketball 2-3-4; Track 3.

Dennis D. Dimit College Preparatory
I am but a stranger here, heaven is my home.
 Boy's Glee Club 1-2-3-4; Mixed Chorus 1-2-3-4; Boys' Quartet 4; Music Group Librarian 4; Science Club 1; Latin Club 2; O & B 4; Annual Board Farce 2; One-Act Plays 1-1; Basketball 2-3; Football 3-4.

Patricia Ditzler Commercial
Then we talked to gods, how we talked.
 Girls' Glee Club 1-2-4; Mixed Chorus 1-2-4; Drum major-ette 4; Science Club 1; Latin Club 2; O & B 2-3-4, editor 4; Y.W.C.A. 1-2-3-4; G.A.A. 4; Annual Board Farce 3; Senior Class Play 2; One-Act Plays 4.

Doris Durr General
Silence is golden.

Lucille E. Durr General
Nothing great was ever achieved without enthusiasm.
 Girls' Glee Club 1-2-3-4; Mixed Chorus 3-4; Y.W.C.A. 1-2-3-4; G.A.A. 4; O & B 4; "A Girl in Every Port" 2; "A Date with Judy" 4; Make-up Crew 1-2-3-4.

Alice F. Fair General
Full of cheer, and full of pep, making friends with every step.
 Y.W.C.A. 1-2-3-4; G.A.A. 4; "A Girl in Every Port" 2; "A Date with Judy" 4; Cheerleader 3-4.

Curtis Ferneau Agriculture
The devil will catch him asleep yet at his post.

Bernard Fleener College Preparatory
Life's a struggle—so is fame, but Barney's winning just the same.



CLASS



Harold Fleener Agriculture
Suit the action to the word.
 F.F.A. 1-2-3-4; F.F.A. Basketball 1-2-3-4; Football 1-2-3-4;
 Honor G, 1-2; Honor G Club 3-1.

Albert W. Graff, Jr. Agriculture
I'm sorry for me, I ain't so awful.
 F.F.A. 1-2-3-4; F.F.A. Basketball 1-2-3-4.

Carma Graff Commercial
Her heart is full of glee, young romance and brilliancy.
 Girls' Glee Club 4; Y.W.C.A. 1-2-3-4; Commercial Club 4;
 O & B 4; "It's a Date" 4.

Donald H. Hall Agriculture
I've changed my mind—well, does it work any better?
 F.F.A. 1-2-3-4, secretary 4.

Norman Hall General
A little nonsense now and then is relished by the best of men.

Rex Hall General
Lanky, lean, and tall—ho's one well miss most of all.
 Football 1-2-3-4; Basketball 1-2-3-4; Track 1-2; Honor G
 1-2-3-4.

David Hamilton English
His devious way is lined like the Mississippi River—by bluffs.

Donald Herbert General
Hang sorrow! Caro will kill a cat, and therefore let's be merry.

Ronald Hilke General
Luck counts once in a while; trained efficiency counts all the time.
 Science Club 1; Annual Board 4.

Elaine M. Hillmann College Preparatory
Faithfulness and sincerity are her first principles.
 Girls' Glee Club 1-2-3-4; Mixed Chorus 2-3-4; Mixed Quartet 4; Y.W.C.A. 1-2-3-4; Science Club 1; Latin Club 2; Spanish Club 3; O & B 4; G.A.A. 1; "And So Goes Life" 4.

Molly Hoskins General
Love me little, love me long.
 Leon High School 1-2; History Club 2; Queen's attendant 1-4; Y.W.C.A. 3 4; G.A.A. 4; Girls' treasurer 4.

Margaret Hoyt College Preparatory
Music hath charms and so has Marg.
 Band 1-2-3-4; Drum Major 2-3-4; Woodwind trio 1-2-3-4; quartet and quintet 1-2-3; bassoon solo 2-3-4; Girls' Glee Club 1-2-3-4, accompanist 2-3-4, president 4, sextette 2-3;

Mixed Chorus 2; Science Club 1; Latin Club 2; Student Council 1-2-3-4, Pres. 4; Y.W.C.A. 1-2-3-4; O & B 3-4; Editor Grinnellian 4; "And So Goes Life" 4.

Betty Hunter Commercial
One truth is clear--whatever is, is right.
 Girls' Glee Club 1-2-3; Y.W.C.A. 1-2-3-4; Commercial Club 2-3-4, sec. and treas. 4; Annual Board 4.

Floyd E. Hunter General
Cheerful company shortens the miles.
 Band 1; Boys' Glee Club 2-3-4; Mixed Chorus 3-4; Basketball and track 3.

Sally Inman General
As merry as the day is long.
 Y.W.C.A. 1-2-3-4; F.H.A. 4; G.A.A. 4.

Warren Walter Johnson Agriculture
Life is what he makes it.
 F.F.A. 1-2-3-4.



CLASS



Jerry Kelly General
A little learning is a dangerous thing.
 G.E.D. tests.

Doris L. Kinney Commercial
Quietness becomes her.
 Montezuma High School 1; Katherine MacKay Club 1; F. H.A. 1; Y.W.C.A. 2-3-4.

Delmer Lamb General
All are not fools that look so.
 Basketball 1-2-3; Football 3.

Jack L. Lang Agriculture
Ain't I the spick and span little kid?
 Football 3-4; Track 3-4; Science Club 1, president 1; Youth Council 1-2; O & B 2; F.F.A. 1-2-3-4, president 4.

Velda Lou Larsen General
Woman—she needs no eulogy, she speaks for herself.
 Girls' Glee Club 1-2-3; Mixed Chorus 3; Cheerleader 2-3-4; Y.W.C.A. 1-2-3-4; G.A.A. 4; "Rest Foot Forward" 2.

Donald Latham Does not graduate

Jaqueline L. Lauber Commercial
I'd rather talk with a man than an angel any day.
 Commercial Club 4; G.A.A. 4; Y.W.C.A. 1-2-3-4.

Robert C. Manly College Preparatory
Executive ability is deciding quickly and getting somebody else to do the work.
 Football 1; Football manager 3; Track 3; Basketball 3-4; Honor G 4; Science Club 1; Latin Club 2; Class President 4.

Allan W. Meyer Commercial
Whatever is worth doing at all, is worth doing well.
 Football 3-4; Science Club 1; Student Council 1-2-3-4;
 Annual Board 4; Governing Board 4.

Kenneth Mills College Preparatory
There may be greater ones than I—but I don't believe it.
 Latin Club 2; Football 2-3-4; Basketball 3-4; Track 2-3-4.

Joan Ellen Mintle General
A cheerful countenance betokens a good heart.
 Band 1-2-3-4; Clarinet quartet 4; Girls' Glee Club 1-2-3-4;
 Senior sextette 1; Mixed Chorus 1-2-3-4; Latin Club 4;
 G.A.A. 4; Annual Board 4.

Marjorie Ann Mitchell English
Some men may come and then they go, but mine is true forever.
 Girls' Glee Club 1-3-4; Mixed Chorus 2-3-4; Vocal solo 4;
 Senior sextette 1; Band 1-2; Commercial Club 2; Y.W.C.A.
 1-2-3-4; Squad leader 4; O & B 2-3-4; Class treasurer 4.

Ronald Moen General
The Lord said let there be foolishness and he created Moen.
 Dixon, Ill. 1; Boys' Glee Club, Basketball, and Track 1;
 Newton, Ia. 2; Basketball, track 2; Nashwauk, Minn. 3;
 Boys' Glee Club, Junior class play, track 3; Grinnell 4;
 Boys' Treasurer and track 4.

Frances Monroe Commercial
Lovely class-mate is she—gentle, sweet, and true.
 Commercial Club 3-4, vice-pres. 4; Y.W.C.A. 1-2-3-4, social
 chairman 4, squad leader 4; F.H.A. 4; G.A.A. 4.

Dorothy M. Morrison Commercial
She has a pleasant way about her.
 Commercial Club 3-4; Y.W.C.A. 1-2-3-4.

Leta F. Mullins General
Talkative, giggling Leta, a very mischievous lass is she.
 Girls' Glee Club 1-2; F.H.A. 3-4, pres. 4; Y.W.C.A. 1-2-3-4;
 G.A.A. 4.



CLASS



Joyce E. McCain English
A kind word is never thrown away.
 Girls' Glee Club 1-2-3; Mixed Chorus accompanist 1-2-3-4; Science Club 1; Latin Club 3, Praetor and Quaestor; Y.W.C.A. 1-2-3-4.

Delmar J. Nagel Agriculture
Von Cassius hath a lean and hungry look.
 Newton High School 1-2-3; F.F.A. 1-2-3-4; F.F.A. Basketball 3-4; Football 4.

Howard Neighbors English
His grin would shame the smiling sun and warm a polar bear.

Vineva Nieman English
A mile a minute is good, but a smile a minute gets more action.
 Clarksville High School 1-2; Band 1; Girls' Glee Club 1-2-3; Y.W.C.A. 3-4; F.H.A. 1, secretary 4.

Imogene Newcomer English
Brown of hair, bright of eye, her ambitions reach the sky
 Band 1-2-3-4, French horn solo 2-3-4, Chamber groups and

French horn quartet 2-3-4, Brass sextet 3, Brass quartet 1, Woodwind sextet and quintet 3; Girls' Glee Club 1; Mixed Chorus 2; Y.W.C.A. 1-2-3-4, Social chairman 3, President 4; Governing Board 4; Science Club 1; Latin Club 2.

Patricia Ann Nolan English
The very room, coz she was in, seemed warm from floor to ceiling.
 Band 1-2, secretary 3-4; Girls' Glee Club 1-2-3-4; Mixed Chorus 1-2-3-4, librarian 4; Latin Club 2; Y.W.C.A. 1-2-3-4 Vice-president 4, squad leader 3; Pep Club 1; F.H.A. 4, song leader 4; G.A.A. 4; O & B 3; Spanish Club 3; Assistant editor of Grinnellian 4; Homecoming queen 4; Class vice-president 4.

Deloris Osterhagen General
She has the right spirit.
 Y.W.C.A. 1-2-3-4; Library helper 4.

Ruth Kathryn Parker Commercial
Wise to resolve and patient to perform.
 Girls' Glee Club 2-3; Mixed Chorus 3; Science Club 1; Commercial Club 2-3-4; F.H.A. 4; Y.W.C.A. 1-2-3-4, Service chairman 3, Program chairman 4; G.A.A. 4.

Evelyn O. Pederson General
Sparkling eyes and cheery smile, many a weary time beguile.
 Band 1-2-3-4; Latin Club 2; Y.W.C.A. 1-2-3-4; G.A.A. 4; "A Girl in Every Port".

Everett O. Pederson Agriculture
I awoke one morning and found myself famous.
 Band 1-2; Football 3-4; Basketball 1-2-3; Track 3-4; F.F.A. 1-2-3-4; F.F.A. Basketball 2-3-4.

Carlyle Phipps General
Anyone can talk, but it takes a genius to be listened to.
 New Sharon High School 1-2; Football 1-2; Basketball 1-2-3; Glee Club 1

Mildred Phipps College Preparatory
She like pleasure, she like fun, she can 'muse most anyone.
 Band 1-2-3-4, cornet trio 2-4, brass quartet 3-4, brass quintet and sextet 1, cornet solo 2-3-4; Girls' Glee Club 1-2-3-4; senior sextette 1; Mixed Chorus 2-3-4; O & B 2-3-4; Y.W.C.A. 1-2-3-4; Science Club 1; Latin Club 2; G.A.A. 4; "Make Mine Chocolate", authoress; "The Courtship of Aunt Agatha" 1

Maynard L. Raffety College Preparatory
No matter what the subject be, I can always find room to disagree.
 Band 1-2-3-4, trombone solo, trombone quartet, brass quartet 3; Football 2-3-4; Basketball 2-3; Track 3; Honor O 2-3-4; Student Council 2-3-4; Junior class secretary and treasurer 3; Science Club 1; Latin Club 2; Mixed Chorus 3; Boys' Glee Club 4; Annual Board 1.

Betty Jean Robbins Commercial
How doth the little busy bee be?
 Girls' Glee Club 1-2-3; Mixed Chorus 3; Y.W.C.A. 1-2-3-4; Commercial Club 4; F.H.A. 1; G.A.A. 4; "A Date with Judy" 4; Science Club 1.

Charles Webster Roe
 U.S.S. Indiana. Enlisted Oct. 1, 1915.
 G.E.D. Tests.

Phyllis Jean Ruble General
There is no wealth like knowledge, for thieves cannot steal it.
 Band 1-2-3-4, Drum ensemble 2-3-4, Snare drum solo 3-4; Y.W.C.A. 1-2-3-4; G.A.A. 4; F.H.A. 1.



CLASS



Maxine Russell

To know her is to like her.

Science Club 1; Y.W.C.A. 1-2-3-4, squad leader 3.

English

Kenneth L. Saunders

Never do today what you can put off until tomorrow.

Latin Club 2; Football 4; Basketball 3.

General

Richard E. Saunders

I'm a self made man—we accept your apology.

Bus driver.

General

Russ Sawin, Jr.

His mother calls him "SUN".

Band 1; Science Club 1; F.F.A. 1-2-3-4; F.F.A. Basketball 3-4; Annual Board 4.

Agriculture

Jeanne Sawyer

True to her word, work, and friends.

Gilman High School 1-2; Vice pres. 1; Annual Board 1; Band 1-2; Basketball 2; Clarinet quartet 2; clarinet solo 1-2; Vocal solo 2; Vocal trio 2; Girls' Glee Club 1-2; Mixed Chorus 1; Grinnell High School 3-4; Band 3-4, clarinet solo 3-4, woodwind trio 4, woodwind quartet and sextette

English

3, Mixed Clarinet quartet 3, clarinet quartet 3-4; Girls Glee Club 3-4, senior sextette 4; Mixed Chorus 3-4; Vocal solo 3; O & B 4; Annual Board 4; Girls' treasurer 3; Y.W.C.A. 3-4; "And So Goes Life." 4.

Henry A. Schultz

Something between a hindrance and a help.

Football 2-3; F.F.A. 1-2-3-4, sergeant-at-arms, 4, F.F.A. Basketball 2-3-4.

Agriculture

Nancy Scurr

With all her faults we love her still. (The stiller the better).

Band 1-2-3-4, sax quartet 2-3-4, sax solo 2-3-4; Girls Glee Club 1-2-3-4; Mixed 2-3-4; Science Club 1; Latin Club 2; Y.W.C.A. 1-2-3-4, squad leader 3; O & B 2-3-4; G.A.A. 4, treasurer 4; Annual Board 4; "A Date with Judy" 4.

English

Shirley Ann Shope

College Preparatory

And her laughter rings throughout the halls.

Band 2-3-4, sax quartet 4; Girls' Glee Club 1-2-3; Mixed Chorus 2-3; Youth Council 1-2; O & B 4; Science Club 1; Latin Club 3; G.A.A. 4; F.I.L.A. 4, president 4; Y.W.C.A. 1-2-3-4, vice-president 3, service chairman 4; Senior class secretary 4; Annual Board 4; "A Girl in Every Port" 2; "Courtship of Aunt Agatha" 4.

Louise M. Simmons Commercial
Woman's at best a contradiction still.
 Girls' Glee Club 1; Science Club 1; Y.W.C.A. 1-2-3-4;
 Commercial Club 2-3-4.

Marilyn L. Simpson English
She is the plot in his life story.

Girls' Glee Club 1-2-3; Mixed Chorus 2-3; Science Club 1;
 Latin Club 1-2; Baton 1-2; O & B 3-4; Y.W.C.A. 1-2-3-4;
 Cheerleading 3-4; "And So Goes Life", authoress, 4.

Eugene Smith College Preparatory
All great men are dying—I don't feel well myself.

Band 1-2-3-4, president 1, Trombone quartet 2-3-4, Brass
 Sextet 2-3-4, Brass Quintet 2-3, Brass Quartet 2, Brass
 Ensemble 3, Trombone solo 3-4; Science Club 1, secretary
 1; Track 2-3-4; Student Council 3-4, president 4; Latin
 Club 2; Motion picture operator 1-2-3-4; Junior class pres-
 ident 3; "What's Up, Doc?" 1; "The Courtship of Aunt
 Agatha" 1; "And So Goes Life" 4; "It's a Date", author,
 4; O & B 1; Assistant Business Manager Annual Board 4.

Gladys A. Smith College Preparatory
Begone dull care, thou and I shall never agree.

Girls' Glee Club 1-2-3-4; Mixed Chorus 2-3-4; Band 2-3-4,
 Drum ensemble 1; Science Club, president 1; Latin Club 2;
 Pep Club 1; Y.W.C.A. 1-2-3-4; President of Junior class 3;
 G.A.A. 1; Make up committee 1-2-3-4.

Gladys M. Springer Commercial
It's nice to be natural when you're naturally nice.
 Y.W.C.A. 1-2-3-4; G.A.A. 4.

Betty M. Stanley English
Knowledge is good; using it wisely is better.

Science Club 1; Y.W.C.A. 1-2-3-4, squad leader 3; O & B
 4; Annual Board 4; F.H.A. 4, reporter 4; "The Courtship
 of Aunt Agatha" 4.

Max Eugene Stanley Agriculture
It's hard to be witty and wise.

Boys' Glee Club 3-4; Mixed Chorus 3-4; F.F.A. 1-2-3-4;
 F.F.A. Basketball 3-4.

Ruth H. Swindal
*Laugh and the world laughs with you—frown and you
 wrinkle your face.*

Band 1-2-3-4; Girls' Glee Club 1-2-3-4, Senior sextet 4;
 Mixed Chorus 2-3-4; Latin Club 2; Pep Club 1; Y.W.C.A.
 1-2-3-4; O & B 4; G.A.A. 4; "It's a Date" 4.



CLASS OF 1947



Rosemary Talbott College Preparatory

Freckles are the sign of brains.
 Band 2-3-4, secretary 4, Drum ensemble 3-4; Girls' Glee Club 1-2-3-4, Senior sextet 4; Mixed Chorus 3-4; Pep Club 1; Science Club 1; Latin Club 2; Y.W.C.A. 1-2-3-4, squad leader 4; O & B 4; Senior class president 4; G.A.A. 4; "A Girl in Every Port" 2; "Make Mine Chocolate" 4; "A Date with Judy" 4; "The Courtship of Aunt Agatha", authoress, 4.

George W. Turney General

Wise from the top of his head up.
 Football 3.

Lester J. Tharp English

Life is short; why spend it in school?
 Basketball 2.

Robert E. Upchurch College Preparatory

One of today's miracles.
 Nevada, Iowa 1-2; Band 1; Boys' Glee Club 1-2-3-4; Mixed Chorus 1-2-3-4; Football 1; Basketball 1; Baseball 1; Homeroom President 2.

Bervol R. Thompson Commercial

She has the right spirit.
 Y.W.C.A. 1-2-3-4; Commercial Club 4; F.H.A. 4.

Donna Lorene Walker Commercial

Never a dull moment.
 Girls' Glee Club 1-2-3-4; Mixed Chorus 2-3-4; Band 1-2; Commercial Club 4; Y.W.C.A. 1-2-3-4; O & B 4.

Betty Rose Thon Commercial

"The Whole Town's Talking."
 Girls' Glee Club 1; Y.W.C.A. 1-2-3-4; Commercial Club 4.

Clair Bernard White College Preparatory

Behold! A scholar!
 Boys' Glee Club 3-4; Mixed Chorus 3-4; Science Club 13
 Latin Club 3; Track 3-4; O & B 4; Annual Board 4;
 Motion picture operator 4; "It's a Date" 4; "The Courtship of Aunt Agatha" 4.

Max Todd English

He can be serious but he'd rather be gay.
 Band 1-2; Football 1-2-3; Basketball 1-2.

Clarice Wittenburg General

Trim and neat; short and sweet.

SENIOR PLAY

The senior play was "Clean Sweep" by Dana Thomas, The story revolves around the complications of the Hazard family which are the results of their suddenly becoming rich. The conflict is the very modern one between capital and labor. Mr. Hazard himself gets a chance to see both sides of the picture when he is handed a two million dollar concern.

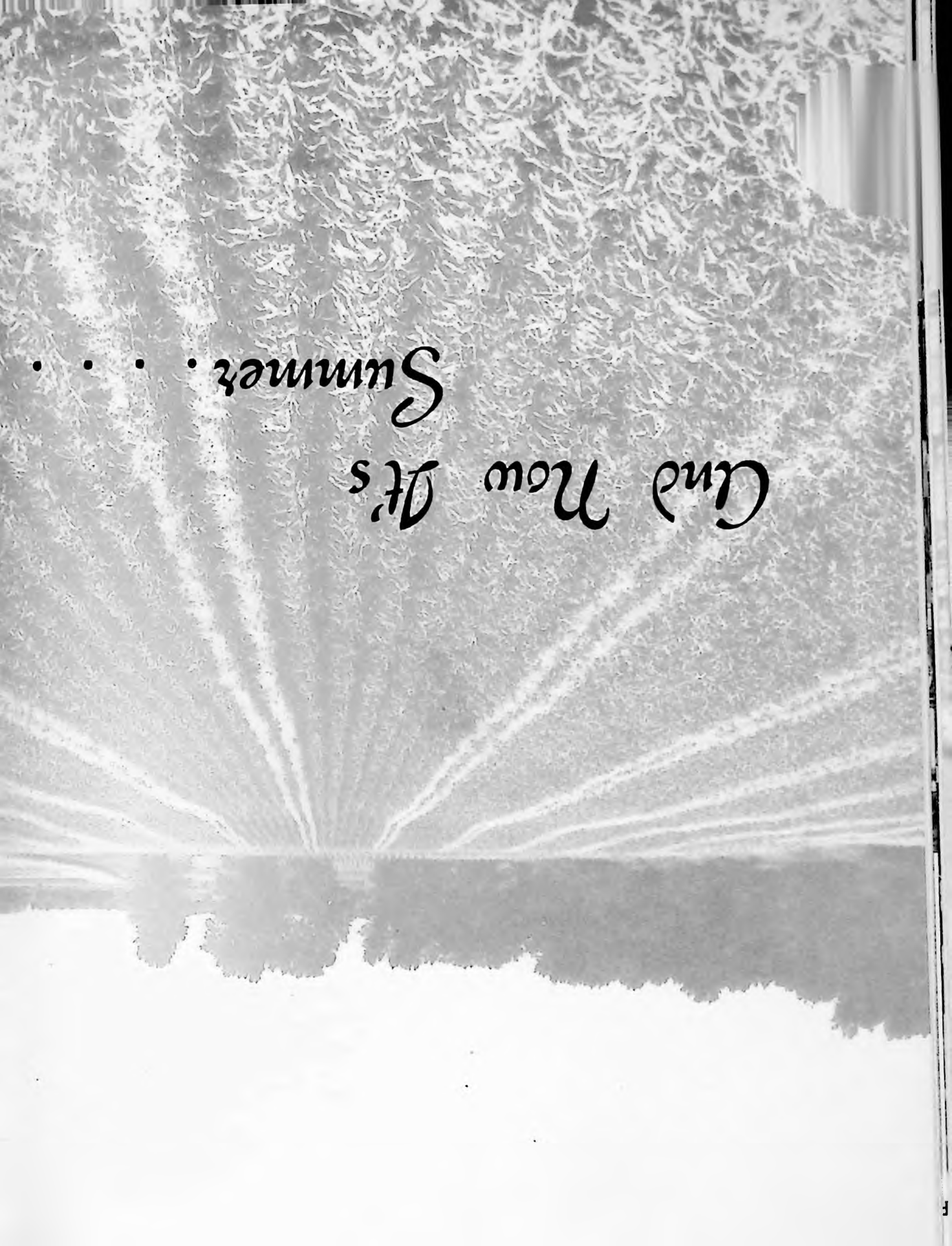
Miss Doris Nelson directed the play and Bob Wittenberg served as stage manager.

Front row: Mildred Phipps, Mother; Velda Larsen, Carole; Alice Fair, Laurie; Nancy Scurr, Madame Louise; Marilyn Simpson, June; Dorothy Brand, Miss Carruthers; Lucy Durr, Trudy. *Back row:* Ruth Swindal, Elsie; Jack Lang, Doug; Bob Upchurch, Tommy; Barney Fleener, Cole; Jack Pasch, Mr. Durick; Ruth Parker, Miss Hayden. Not pictured: Tom Playle, Father.



First row: Tom Playle, Bill Simmons, Lester Tharp, Jim Adkins, Russell Stoker, Pete Bonyata, Paul Criswell, Eugene Smith, Serge Phelps. *Second row:* Robert McClure, Gerry Laros, Carol Renaud, Harry Barnes, Wayne Hendrickson, Jack Lang, Willis Fritz, Howard Neighbors, Roy Bryan. *Third row:* O. B. Nelson, Darrel Cusey, Martin Hankinson, Dennis Ritter, Ronald Moen, Wayne Ryan, Gar Lamb.

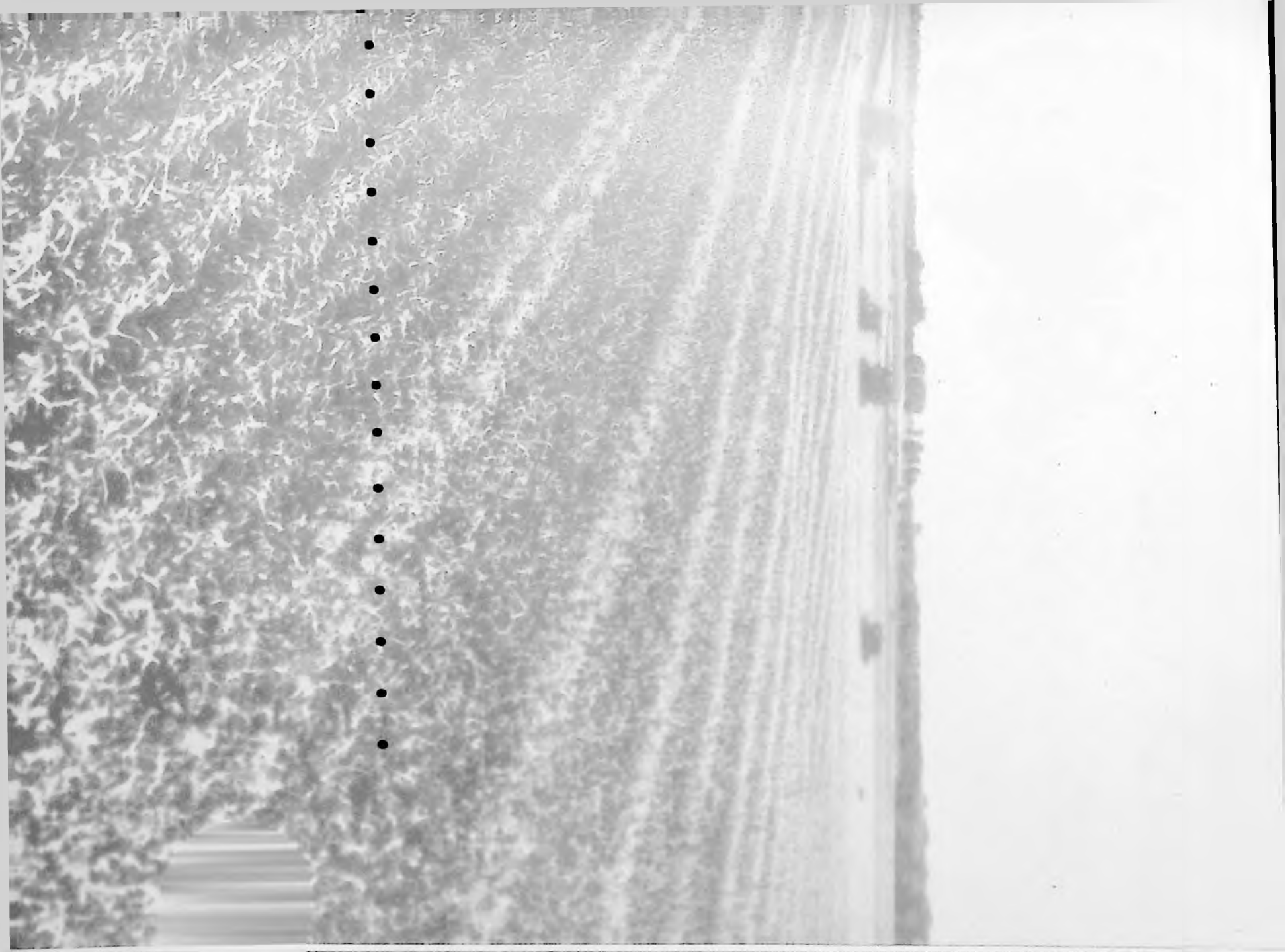
Under the guidance of Coach Lamb, Mr. Nelson, and Mr. Kurth, forty-five boys are training for the regular track season. Ronald Moen, transfer from Nashwauk, Minnesota, has been a standout in the mile run.



• • •

Summer.

And Now It's



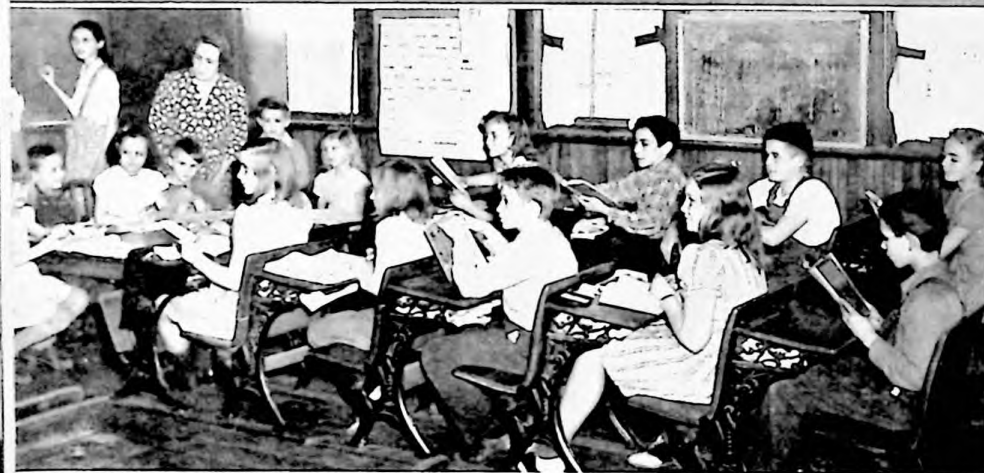
GRANT TOWNSHIP



GRANT NO. 1

Grant No. 1 had six grades this year. The pupils did many interesting projects in art, handcraft and manual arts. Two interesting undertakings included a unit on spices and the making of a large relief map of the United States using papier mache.

First row, from right: Carolyn McDonough, Kenneth Wichman, Larry Olson, Edna Mae Gochring, Elizabeth Fowler. *Second row:* Mary Molison, Robert Molison, Frank Fowler, Donna Mae Olson, Janet Wichman. Mrs. Lola E. Ahrens, teacher.



GRANT NO. 2

A new kind of program given by No. 2 this year was the entertainment of all the mothers with class recitations. This program was held the afternoon of October 31.

At blackboard: Ruth Gruenhaupt. *At table, left to right:* Joann Brown, Georgie Chyna, Mary Ann Palmer, Carl Brown, Ray Delk, Margie Saxsma. *Front row:* Roberta Brown, Barbara Brown, Richard Evans, Alpha Barkley, Lee Gruenhaupt. *Back row:* Norma Smith, Ray Haines, Gary Maring, Marjorie Evans. Mrs. Blanche McCain, teacher.



GRANT NO. 4

An important item in the school year at No. 4 was the installation of electric lights. In the art class the pupils have made what-nots, door stops, and sewed articles as gifts for the mothers.

At table: Joann Lauber, Linda Pinkerton, Joyce Wiley, Marilyn Lauber, Donna Lauber, Dorothy Wiley. *At back:* Mrs. Stella F. Bailey, teacher, Keith Lauber, Duane Lauber, Warren Wiley. *First row:* Irene Onthank, Opal Schnathorst, Ronald Crawford, Wayne Sieck, La Donna Schnathorst. *Second row:* Grace Onthank. *Visitors:* Mrs. Edward Onthank, Mrs. Louise Sieck, Mrs. Raymond Wiley. Not pictured: Clyde Wiley.

RURAL SCHOOLS.

GRANT NO. 5

Grant No. 5 started school in a freshly painted school-room last fall. At Thanksgiving the pupils helped the Snahnah Camp Fire Girls make nut cups for the hospital. A good Citizen's Club aids the discipline.

First row, from left: David Flanagan, Larry Flanagan, Larry Snider. *Second row:* Billy Badger, Richard Badger, Larry Hodges, Margaret Anne Pilgrim. *Third row:* Peggy Schultz, Darlene Comerford, Carol Emmert, Verna Madill. *Fourth row:* Arline Madill, Marguerite Flanagan. Miss Avis Tone, teacher. Not pictured: Delmar and Roger Larsen.



GRANT NO. 8

The parents, teacher and pupils of Maple Grove school had a Thanksgiving supper together, and a Christmas program was given on December nineteenth. The Activity Club has been busy with various reports, correcting "Bad English" and conservation work.

Standing, from left: John Rasmussen, Barbara Lee, Virgil Stanley. *Seated:* Gary Olson, Alice Hyde, Charles Olson, Mary Ann Bangham, Doris Wilkinson. Mrs. Lauretta Rempp, teacher.



GRANT NO. 9

No. 9 school participated in sending, through the Red Cross, articles for children in wartorn countries of Europe. The school also contributed money for this purpose.

Front row: Tommy Comerford, Barbara Koger, Carol Jean Farmer (at piano), Marilyn Thompson, Geoffrey Peak, Betty Thompson. *At back:* Ray Bayles, Jerry Renbarger, Bertha Bayles, LeRoy Thompson, Harvey Bayles, Stella Grace Farmer. Miss Ruth Pierce, teacher. Not pictured: Glenn Bayles, Lila Bayles.



GRANT NO. 3 RURAL SCHOOL



Standing: Roger Bailey, Donald Stoker. *First row:* Mildred Stoker, Donna Bailey, Doris Stoker. *Second row:* Marvin Stoker, Louis Fleener, Dennis Porter, Robert Stoker, John Moore. Sarah F. Clark, Teacher.

Grant No. 3 has put a great deal of interest in handwork and nature study. The boys have done some wood objects, bird houses, door stops, etc., while the girls sewed. Several students made kites in the spring which they flew with great success. The primary pupils planted seeds indoors to watch the story of growth and the older pupils planted around the school grounds. The whole school was interestedly watching for eggs to hatch into tadpoles.

DETASSELLING



Get to work, Jan . . . Oh, Oh, gee, a man! . . . Miss Couper.

McBlain Green House

CUT FLOWERS

Corsages

for

Every Occasion

226 East St.

Phone 498

PIONEER OIL CO.

Wholesale and Retail

Distributors

Mobil Products

* * *

4th and West

Phone 456

Want To Relax?

D
R
O
P

I
N

AT

CANDYLAND

FOR REFRESHMENT

Phone 17

Grinnell Grain Company

FEED — — SEED

COAL — — GRAIN

Phone 118

4-H CLUBS



"Dress up your home the 4-H way" . . . Dempster and Willer . . . Hooray for the charm of yesteryear . . . The Chester Stars . . . Washington Merry Workers on parade . . . Schmitz & Co. . . . Edith Bailey for president! (She made it!)

4-H ACTIVITIES

In an agricultural community such as ours, 4-H is an important part of life. The whole community has come to look forward to the annual fair. We accept as part of Grinnell life, the frequent winning of 4-H awards by our young farm population. 4-H is training in community living and citizenship. The national motto, "To Make the Best Better", the state slogan, "To win without bragging—to lose without squealing" and the pledge, "I pledge

are testimony to the ideals of 4-H.

My Head to clearer thinking,
 My Heart to greater loyalty,
 My Hands to larger service,
 My Health to better living,
 For my club, my community, my country and my world"

Girls 4-H clubs study clothing, foods and nutrition, home efficiency and home furnishing. Poweshiek county is studying clothing this year. Through this study, members are learning better grooming habits, the care and repair of clothing and methods of cutting and constructing new garments. Besides the main project, the clubs also study music, health, conservation, courtesy, citizenship, parliamentary procedure, home grounds improvement and recreation.

Boys 4-H clubs study beekeeping, gardening, market classes for hogs, sheep and cattle as well as purebred classes, dairy heifers, poultry and colt classes, both for light and draft horses. Soil conservation is another project which is being stressed highly.

In Poweshiek County there are eleven local clubs each of these guided by two adult leaders. During 1946-47, Jack Lang served as county president.

Congratulations
and
Good Luck
Seniors

LEN HALSTEAD

Local and
Over the Road
Operations

THE
○
SPOT

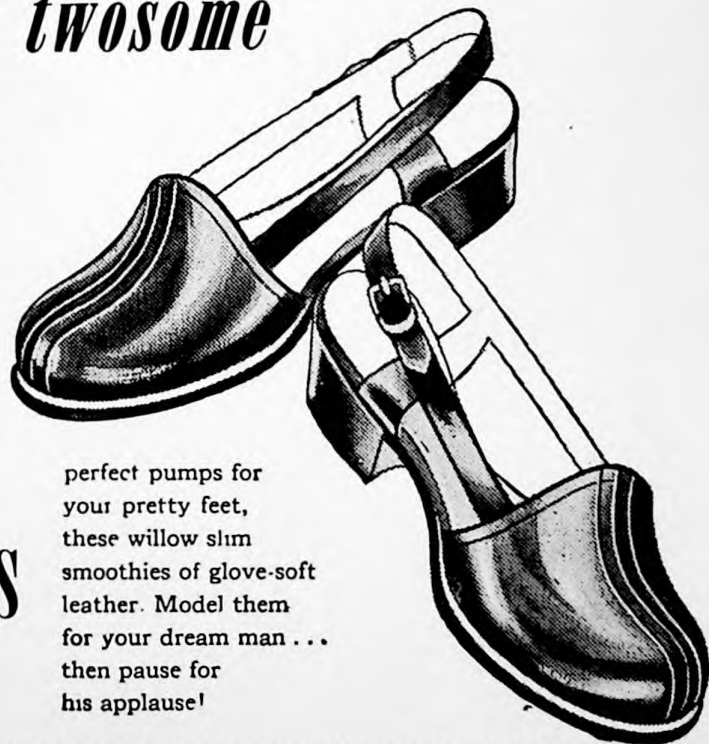
GOSSEN

Printing Co.

Commercial Printing
of Distinction

Tempting twosome

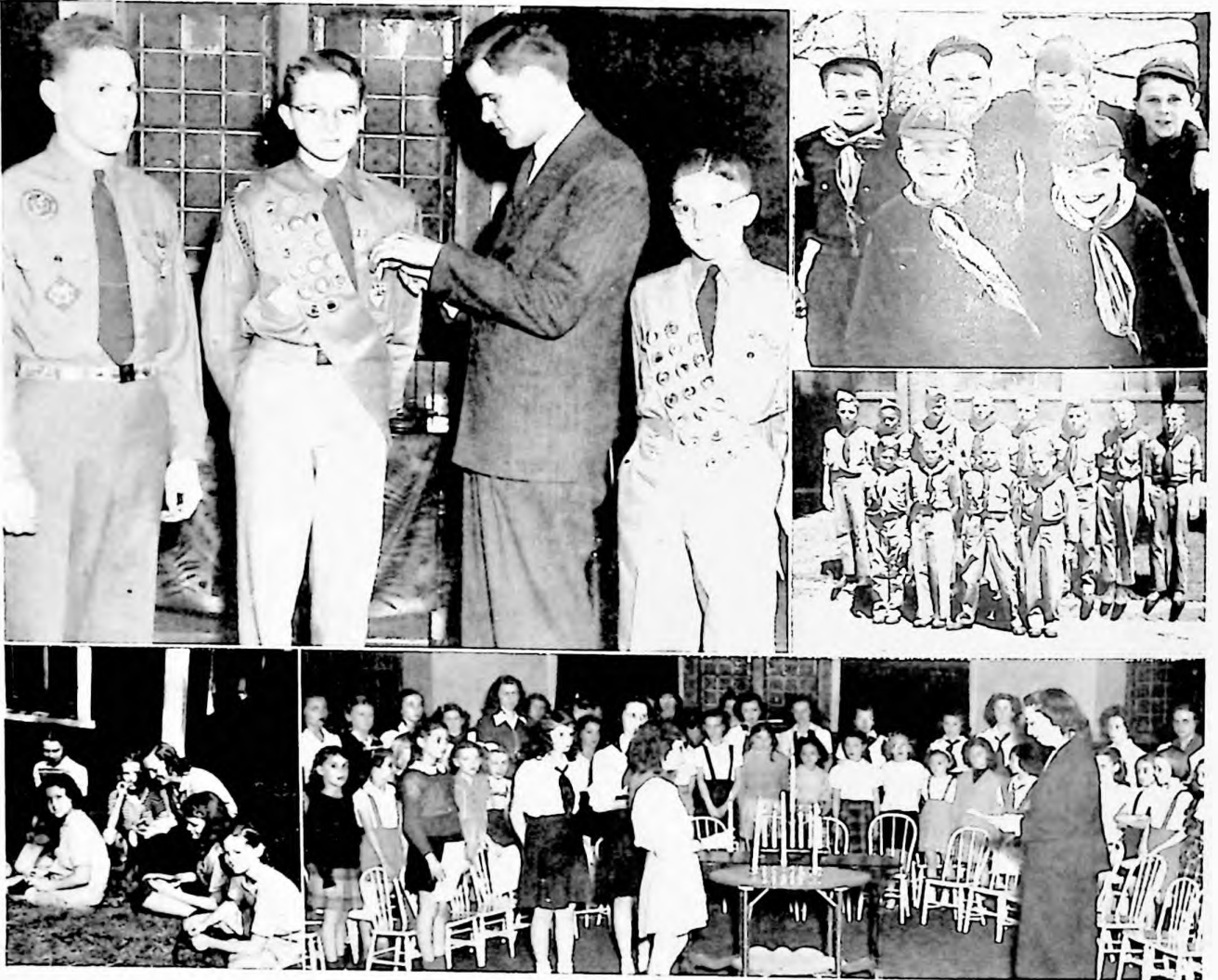
by **TEEN AGE**



WOOLLEN'S

perfect pumps for
your pretty feet,
these willow slim
smoothies of glove-soft
leather. Model them
for your dream man . . .
then pause for
his applause!

BOY SCOUTS



The Eagle awards . . . Cub Scouts . . . One of the Troops . . . At Camp Hawikah . . . Camp Fire Grand Council

and CAMP FIRE GIRLS . . .

PRESTON'S

Clothing Corner
For Men and Boys

HOME OF HART SCHAFFNER AND MARX

S. D. Preston

John Craig

SCHOOL CHILDREN LIKE OUR MILK
AND IT'S GOOD FOR THEM

ICE CREAM AND FOUNTAIN SERVICE

GRINNELL DAIRY

934 MAIN ST.

PHONE 777

UNITED FOOD MARKETS



OUR TIME IS YOUR TIME

Grinnell's Largest
Selection of Meats,
Fruits and Groceries



DeKalb Quality Hybrid

The Corn The Farmers Like
DEKALB AGRICULTURE
ASSOCIATION, INC.

Willis D. Shuey INSURANCE

Life Accident Fire
Auto Hospital
815 1/2 Fourth Avenue

G.H.S. IS ACTIVE

JUNIOR RED CROSS . . . SCIENCE DAY



"We did it all by ourselves!" . . . Oh, these scientific people! . . . What da ya know, he can write; . . . All that attention just for Barnsey.

STATE MUSIC CONTESTS . . . FOOTBALL



"Here I go!" . . . 1-2-3-4-Whew! . . . A touchdown . . . Better move fast, Mr. Case! . . . See who's trying to steal the show . . . The fighting tigers . . . Look at *Sergeant Nelson!*

Dexter Washer
Gould Pressure System
Refinite Water Softeners
Plumbing
Farm Water Supplies

Geo. German
821 Main Grinnell Phone 591

McNallys Market

The Home of Cornfed
Native Beef

Phone 44 Grinnell, Iowa

GRINNELL STATE BANK

"THE FRIENDLY BANK"



Grinnell Monument
Company

MARK EVERY GRAVE
FOR REMEMBRANCE

Quality Motor Sales
G. I. Case Farm Equipment
Willys Automotive Line

Phone 68 Grinnell

Grinnell Livestock Exchange

Auction Sale Every Friday

"We have good buyers and good sellers"

YOUR PATRONAGE IS APPRECIATED

PHONE 36

INDEPENDENT DEPARTMENT STORE
BROADWAY
 GRINNELL --- IOWA

DESIGNED STRICTLY FOR

Juniors

AND SOLD EXCLUSIVELY

AT THE

INDEPENDENT DEPARTMENT STORE
BROADWAY
 GRINNELL --- IOWA

- Trudy Hall
- Doris Dodson
 - Paul Sachs
 - Minx Modes
 - Joan Miller
 - Davlee
- Ann Foster
- Meri - Anne
 - June Arden
 - Claire Kay
 - Barbara Field
 - Gidna Sports



WRIGHT & PETERS

Sales Co.

John Deere

Pontiac Cars Case Machinery

Diamond T Trucks

Sales - Service - Parts



USED CARS

1029 4TH AVE.

PHONE 612

We Insure Everything
Everywhere

CLINDININ

Insurance Agency
Grinnell, Iowa

McDowell & Pedersen Agency

Insurance Headquarters
Phone 85
Grinnell, Iowa

Richardson & Phelps

Building Materials
Paints

PHONE 9

TURNER'S Pharmacy

E. C. Turner, Reg. Ph.
817 Fourth Ave.

TALBOTT & OLDS

Feed -- Grain -- Coal

Stokol Stokers

PHONE 164

GRADE SCHOOLS



Future farmers, Larry and Richard Wells . . . Charles and David DeLong love their pets . . . Cooper vs. Parker . . . Jack Mathews, future Newton rival . . . Eat the nice corn! . . . Three little McNally maids . . . Civic interest begins early for Faye Cortwright . . . A grade school romance . . . A favorite, Miss Phillips



GRINNELL COLLEGE

... Its Life Bound
Inseparably
With that of the Community

HOTEL MONROE

802 Park
Grinnell, Iowa

DRESSES FOR EVERY OCCASION

For the smartest styles in
juniors and misses sizes
Sizes 9 to 17 - 10 to 20

VIRGINIA'S

1115 Broad St. Phone 276

AMERICAN LEGION and 40 & 8

Wish Seniors

Congratulations and Good Luck



Davis School sixth graders dressed for Centennial observance . . . Tournament enthusiasm . . . All alone . . . Junior high eagers scramble for a rebound . . . Pep leaders . . . We're just watching, thank you . . . Three musketeers . . . More pep . . . Fun getting ready for the Junior High operetta . . . Maids of 1846.

In a Town With the Best Schools
DEDICATED TO HIGH QUALITY MERCHANDISE
COURTESY SERVICE

MUCKLER & GEORGE

D. J. Muckler

Russell George

813 4th Ave.

**Pulis - Johnson Motor
Inc.**

FORD PRODUCTS

SALES & SERVICE

Phone 500 - 716 4th Ave.

Laros News Stand

MAGAZINES

SCHOOL SUPPLIES

TYPEWRITERS

RENTAL AND REPAIRS

KEARNEY

Coal & Seed Co.

Phone 92

813 Main St.

OUR COAL MAKES WARM FRIENDS

Field Fence and Farm Hardware

Conoco

Badger Brand

'Long Life' Stokers

Farm Seeds

Thor Washers

BIG GAIN FEEDS

THE HOTEL SHANER



Wishes the graduating class success in their future undertakings.

Sincerely,
Mr. and Mrs. W. F. Shaner

GENERAL MACHINE & TOOL CO.

Schwinn-Built Bicycles
Briggs and Stratton Motors
General Machine Shop Work

Phone 70 818 4th Ave.

GRINNELL CLEANERS

CLEANING
PRESSING
DYEING
BUTTON MAKING

815 4th Ave. Phone 88

CONGRATULATIONS SENIORS!

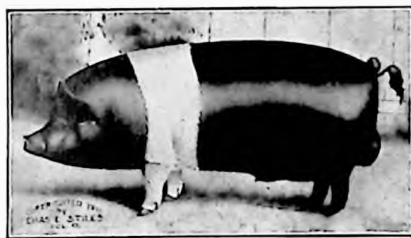
MITCHELL MOTOR COMPANY

Buick Johnson Outboard Motors
Used Cars
Sales and Service

GRINNELL

IOWA

BUYERS OF FAT HOGS AND CATTLE



We Sell Stocker and Feeder Cattle

Hogs

Sheep

Paul R. McConnell

ROCK ISLAND STOCK YARDS

Grinnell

Phone 115

R. E. Koger

D. W. Gilbreath

SMITH'S

Funeral
Home
1103 Broad St.

Furniture
Store
929 Broad St.

PHONE 255
Grinnell

FARMERS' MUTUAL

Reinsurance Association
Grinnell State Bank Bldg.

A FINE SELECTION
OF LADIES
SPORTSWEAR

Suits — Coats
Slacks — Blouses
Sweaters

SPURGEON'S

KING'S

GRINNELL LAUNDRY

Phone
556

LEARN TO FLY

Student Instruction
Charter Rides
Piper Cub
Sales and Service

NIEDERHAUSER
AIRWAYS
Grinnell, Iowa

YORK Lumber Co.



Home of
Mule-Hide Roof
and
Benjamin Moore
Paints

HELLO 3-0
732 Broad Grinnell

Cunningham Drug

Phone 204
827 4th Ave. Grinnell

Filling Prescriptions is
the most important
part of our business
Grinnell's Busiest
Drug Store

AHRENS HYBRID SEED CORN CO.

Producers New Grinnellian
Hybrids

EVERY BUSHEL CARRIES FREE SOIL TEST
VISIT OUR SOILS LABORATORY

GRINNELL TAXI

PHONE 62

DAY OR NIGHT
SERVICE

Robert Grandstaff
Ernest Beason

Interior

Rearranging

Crating

Packing

PASCH TRANSFER

PHONE 246

Light Delivery

STRAND

IOWA

THEATRES

WHERE THE GANG GOES

DRY CLEANING AT ITS BEST

Reynolds Cleaners

Altering & Repairing

923 Main

Phone 87

Grinnell, Iowa

Star Clothing Co.

BETTER MERCHANDISE

FOR LESS MONEY

FOR

- Sport News
- News Pictures
- All School News
- Community News

TWICE IN EVERY WEEK

Read

The GRINNELL HERALD-REGISTER

Van Wechel Motor
Sales



CHEVROLET - OLDSMOBILE
Sales and Service

Congratulations

Seniors

GOFF'S BAKERY

COURTESY

Snap James

Clair's Cleaners

For Those Who Care

Tailoring and
Repairing

Phone 666

Grinnell, Ia.

WEDDING BELLS

Joan and Frank



Betty and Leonard
Katherine and Joe



Marge and Bill



The noisy nine! . . . Boy! am I tired! . . . Disgusting, eh? . . . So sorrowful . . . Yes, we know, Jack . . . Busy bees at work . . . Ah, the centennial . . . My, how you've changed, Rosie . . . Really, Roy!! . . . Two tenors . . . Come on, folks, let's go . . . A boy and his dog.

Congratulations and Best Wishes

Seniors

DUNCAN STUDIO

Phone 335

909 $\frac{1}{2}$ Broad

DIXIE INN

FOOD
NOT MERELY GOOD
BUT DELICIOUS

KOHN'S FASHIONS

READY - TO - WEAR AND
MILLINERY
805 4th Ave.

**MEADOW GOLD
ICE CREAM**

Butter - Cottage Cheese
and Ice

BEATRICE FOODS CO.

733 West St. Grinnell, Iowa
Phone 402

SHELL ONE-STOP

Ray Gaylor

Jack Pearson

6th and Broad

Grinnell, Iowa

LANG'S PARLOR DAIRY

Grade
"A"
Pasteur-
ized
Milk
&
Cream



Our
Motto
"Quality
First"

HOWARD SAGE'S

Cash Produce Market
Cash Buyer of
Eggs, Cream, Poultry
Full Line of
Sargent's Feeds

Phone 4181 918 1/2 Main

D - X

Service Station

J. H. Crary

6th & State Phone 2747

Auto Supplies

Hardware - Paint - Housewares
Electrical Supplies - Sporting Goods
Furniture

"Walk in. You are always
welcome at Zimm's."

COAST - TO - COAST STORES



MODERNISTIC
Beauty Salon

Mr. Edward, Hair Consultant
Phone 243 835 Broad St.

The Poweshiek County National Bank

Grinnell, Iowa



THE PARTY LINE

Your willingness to share courteously and equitably your party line service with others on the same line will be reflected in better service for you.

IOWA TELEPHONE AND TELEGRAPH COMPANY

"The Value of the Telephone Is Greater Than the Cost"

THRIFT - WAY

Super Market
YOUR PATRONAGE
APPRECIATED

GRINNELL IMPLEMENT STORE



Sales - Service - Parts

Telephone 19

601 4th Ave.

Chrysler Plymouth
SALES & SERVICE

Hatcher Auto Co.

G.M.C. Motor Trucks

920 Main

Phone 65

THE PREFERENCE OF THE
WELL DRESSED STUDENT

Goodyear

Shoe Repair Shop

Chas. Safris, Prop.

Phone 637

B. J. SNYDER & SON

LIVESTOCK BUYERS

PHONE 112

CALENDAR 1946 - 47

- Sept. 9—We begin again. Where did that nice long vacation go?
- Sept. 13—First football game of the season with McKinley of Cedar Rapids. A tie—0-0.
- Sept. 17—Tri-County Institute at Newton. A sudden vacation is nice, eh what?
- Sept. 20—We all go to Marshalltown (that is as many as can get there) to witness the Tiger-Bobcat game. Their claws were too sharp. Score 33-6.
- Oct. 1—We are told of the plans for our new Youth Center at an all high school assembly.
- Oct. 4—Football at Newton. The band puts on a nice show. Score was a robbery—19-18.
- Oct. 11—Boone here. Things are looking better. Score 12-0 in our favor.
- Oct. 14—Vocal groups begin their magazine campaign with an assembly.
- Oct. 15—My! those F.F.A. boys really believe in doing things up right. We understand their hayride went clear to Malcom.
- Oct. 16—We're learning to dance in the "rec" room at noon and enjoying it.
- Oct. 17—F.H.A. Club is organized with Miss Gorsuch as sponsor. A fine organization.
- Oct. 18—Ames here and we were foiled again. 24-0.
- Oct. 20—About thirty band members journey to Des Moines to hear the Marine Band and get lost from each other in the space of one block.
- Oct. 20—A few F.F.A. boys and sponsor, Mr. Douglass, attend the National F.F.A. Convention and Royal Livestock Show in Kansas City.
- Oct. 22—Drummond Club announces winners in poetry contest and we are amazed at the hidden talent brought to light.
- Oct. 24—Y.W.C.A. has annual Dad-Daughter party for freshmen girls. A very nice affair.
- Oct. 25—Osky here. G.H.S. is presented with a homecoming queen, Pat Nolan, thanks to the Honor "G". Osky band didn't make it, but the score erased all disappointment. We won 24-0.
- Oct. 28—Vocal groups are privileged to hear piano concert by Mr. Albert Farrot.
- Oct. 29—A magician, Magrum, keeps us entertained for an hour. What became of that rabbit anyhow?
- Oct. 29—Magazine campaign closes with a total of \$1900 subscribed. Good work, vocal groups!
- Nov. 1—We suffer at the hands of Roosevelt of Cedar Rapids in our last game of the season. Score 13 to 9. Rain, rain, go away.
- Nov. 5—We elect Governor Blue once more in a mock election.
- Nov. 6—Award assembly for football boys. Raffety is elected honorary captain.
- Nov. 9—Miss Alden returns to Rhode Island after only two months. What have they got we haven't got?
- Nov. 11—Armistice day program.
- Nov. 15—Centennial Program with a capella in costume (cute) and an interesting talk by Mrs. Henely.
- Nov. 15—Youth Center has grand opening with an all school party. Over three hundred adults and kids in attendance. Super!!
- Nov. 22—End of the second six weeks. Already?
- Nov. 26—"A Date With Judy" presented as annual board farce.
- Nov. 28--29—Ah, Thanksgiving vacation. Hamilton leaves us mourning as he departs for sunny Arizona.
- Dec. 5—Mr. James Whittaker gives us a first-hand account of his experiences with Rickenbacker. We are impressed.
- Dec. 6—Conference basketball opener as we win from Boone 26-25. That's a bit too close for comfort. Dummy Neighbors receives the Preston award at the Youth Center following the game.
- Dec. 9—Band offers first concert of the season assisted by the a capella. Enjoyed by all.
- Dec. 13—Brave souls venture to Newton over icy roads to witness a thriller. We won 36-35.
- Dec. 15—Annual vocal Christmas program with big groups, small groups, and soloists. The Christmas spirit moved all.
- Dec. 18—Vocal groups' Christmas formal in "rec" room. Ummm! Nice. Mistletoe, too!
- Dec. 20—We beat Marshalltown 35-28 in Darby gym. Yea! Tigers!
- Dec. 20—Y.W.C.A. Christmas program is presented and enjoyed by all.
- Dec. 20—Here it is at last! Christmas vacation.
- Jan. 6—We creep back to begin again. Short layoff, wasn't it?
- Jan. 10—Junior Hi entertain us with "Holiday Review." Very clever and appreciated by all us bigwigs.
- Jan. 10—We lost to Osky 33-32 in an overtime. Grrr!
- Jan. 13—Charm Quartet bring light musical selections to our door.
- Jan. 16—We're dismissed at noon with the close of the semester.
- Jan. 17—Ames trampled us with a 32-23 victory won in Henely gym.
- Jan. 24—Boone toreadors reached second place in the conference as a result of their victory over us. Score—23-21.
- Jan. 27—C. E. Jones gave us some interesting facts on atom bombs and cosmic rays. Complicated, isn't it?



THE
RAVEN
Grinnell
Iowa

COULTHARD
Welding Shop

PORTABLE WELDING

Phone 171 907 Spring St.
Grinnell, Iowa

SCHOOL SUPPLIES

and

EVERYDAY NEEDS

Sanders 5c - \$1.00

On Fourth Avenue

Swift and Co.

CASH BUYERS OF
POULTRY, EGGS, CREAM

Phone 75

Norris Garage

STUDEBAKER CARS

U. S. Tires — Gasoline

Burning Oil — Tractor Fuel

CALENDAR 1946-'47 (Continued)

- Jan. 29—Newton game postponed because of Eie "big snow."
- Jan. 30—We're blessed with a sudden vacation due to the deep snow surrounding our doorsteps.
- Feb. 5—We take most of the day off having our pictures taken for the annual.
- Feb. 7—Marshalltown game postponed because of the persistence of the snow.
- Feb. 7—Junior III gave two outstanding performances of Eie operetta "The White Gypsy," under the direction of Miss Baker. The "kink" has our sympathy. Congratulations, all!
- Feb. 12—Second band concert of the season postponed indefinitely. Pneumonia took over the head man. And that beautiful piano. Moan!
- Feb. 13—Mrs. Ryan presented an outstanding piano recital in the auditorium. We were spellbound.
- Feb. 14—Oskey tripped us up with a 40-30 victory won by those redskins in Darby gym.
- Feb. 18—We topple the cardinals 29-25 in Darby gym. Worth waiting for.
- Feb. 20—Undefeated Ames beat us 31-23 on the Ames floor.
- Feb. 21—Four one-acts keep the audience well entertained. Who knows—someday we may have a famous playwright in the alumni.
- Feb. 25—The Y.W.C.A. Banquet for seniors and their mothers is held in the "rec" room. Spring is in evidence everywhere. Very lovely.
- Feb. 25-26-27-28—Sectional tournament at Brooklyn. We took Monte 43-22.
- Feb. 28—End of fourth six weeks. Only twelve more to go. Will we ever make it?
- March 4-5-6-7-8—District tournament here. Did anyone get away with an apple core? First we defeat Colfax only to find ourselves defeated by Newton.
- March 17—Formal vocal concert wows 'em all.
- March 19—Where is everybody? Iowa City maybe? State tournament, you know.
- March 21—We try to get to Mars only to find that suicide gets us first. Ah! that floronine.
- March 25—Band concert under the baton of Bob Bouma. Hills is still pneumonia bound.
- March 25—Joanne Fritz heads Y. W. for next year.
- March 27—Basketball letters are presented and Bob Ahrens is elected honorary captain for the past season.
- March 28—The teachers journey to Ames, and some of us go to Vinton to participate in the music contest.
- April 3-8—Spring vacation and were we glad to see it come. Now maybe we can get caught up but who wants to?
- April 10—Dillon tells us of some hair-raising experiences in the Arctic.
- April 11—All school party in the gym. Nice going having the Dukes of Rhythm.
- April 14—F.F.A. has a Parent Party. Good deal.
- April 17—We are entertained by the vocal groups as they give out with their contest selections. Such improvement.
- April 24-25-26—Boone calls the eager musicians and what a time was had by all. Need we say more?
- April 25-26—Drake Relays.
- April 28—Pan-American program very well done.
- May 2—Miss Nelson and play cast present "Clean Sweep." Lots of fun.
- May 3—College Invitational Track Meet and we send a queen, Rosy "Blackeye" Talbott.
- May 5—O & B picnic. Where does all the food come from?
- May 5-10—Music week enjoyed by all.
- May 9-10—District track meet.
- May 12—Honor "G" Banquet. Ummm! Wish there were more of these.
- May 16—Dignified seniors present us with an assembly.
- May 16—Track meet at Oskey.
- May 18—Baccalaureate. A capella does a fine job.
- May 19—Jr.-Sr. Prom and everyone looks his best and has a wonderful time.
- May 20—Another lovely annual Y.W. meeting for the senior girls. How do they do it?
- May 21—Seniors get their final going over.
- May 22—At last we're free.

REX CIGAR STORE

BEST PLATE LUNCH IN TOWN
SPORTS RETURNS SODA FOUNTAIN
A REALLY GOOD MALTED MILK

Phone 11

ARNOLD'S SHOES

SHOES FOR ALL OCCASIONS
FITTED BY X-RAY

Margaret P. Arnold Orrie F. Haag

SLIM'S

SKELLY SERVICE



Tires

Batteries

Greasing

Sixth and Main

GREEN'S IMPLEMENT & RADIATOR SHOP



Minneapolis Moline Farm Equipment
Automobile and Tractor Radiator Repairing

615 Fifth Avenue

Phone 641

EVERYTHING FOR
THE SPORTSMAN

H. R. Ritter Hdwe.

917 Main

Phone 245

"If it can be had—
Ritter's have it."

HEADQUARTERS FOR
Bendix Washers - Frigidaire
R. C. A. Radio
Kroehler Furniture
Bigelow Rugs & Carpets

McGREGOR'S

Dependable Home Furnishers
Grinnell

INDEX

A Capella Choir	56
Administration	12-13
Advertisements	81, 83, 85, 87-89, 91, 93-95, 97, 99, 101-103, 105, 107, 109-111
Annual Board	33
Annual Board Farce	22
Band	51
Basketball	34-35
Board of Education	12
Boy Scouts	84
Boys' Glee Club	57
Calendar	104, 106
Camp Fire Girls	81
Cheerleaders	35
Clerks	16
Commercial Club	36
Cooper School	43-45
Creative Writing Plays	58-59
Custodians	112
Davis School	46-48
F. F. A.	40-41
F. H. A.	39
Football	21, 86
Four H	82
Freshman Class	25
Girls' Glee Club	56
Grant Township Rural Schools	78-80
Hall of Fame	6-9
Hig's School Faculty	14-16
Homecoming King and Queen	20
Honor G Club	20
Instrumental Groups	55
Junior Class	23
Junior High School	26-29
Latin Club	36
Majorettes	54
Orange and Black	32
Parker School	49-51
Poetry Winners	22
Principals	12-13
Science Clubs	38
Senior Play	75
Seniors	60-74
Sixth Grades	42
Snapshots	80, 86, 90, 92, 96, 100
Sophomore Class	21
Spanish Club	37
Student Council	18
Track	75
Vocal Groups	57
Youth Center	18-19
Y. W. C. A.	17

Poweshiek Mutual Insurance Association

Best Service At Least Cost

SAFETY—SERVICE—ECONOMY

Fair and Prompt Loss Settlements. Economical Management

Your Money Remains At Home

There Is An Agent In Your Vicinity

A. O. McDOWELL, Secretary

Phone 85

Grinnell, Ia.

YOUR INCOME TAXES

Are Based on Your Bookkeeping

- Correct bookkeeping may save you many dollars in taxes.
- Several hundred are doing their bookkeeping and income tax reports through this office.

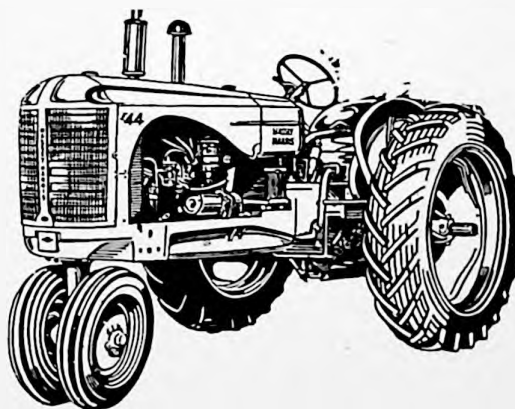
Parsons' Bookkeeping & Tax Service
819 Commercial St. Phone 372
Grinnell, Iowa

Congratulations

Seniors

COZY BEAUTY SHOP

PEARCE IMPLEMENT CO.



MASSEY - HARRIS TRACTORS & FARM
EQUIPMENT

GRINNELL, IOWA

PHONE 24F30



"JAHN & OLLIER AGAIN"

The slogan that's backed by genuine goodness in quality and service, the result of 43 years successful experience in the yearbook field.

We find real satisfaction in pleasing you, the yearbook publisher, as well as your photographer and your printer.

JAHN & OLLIER ENGRAVING CO.

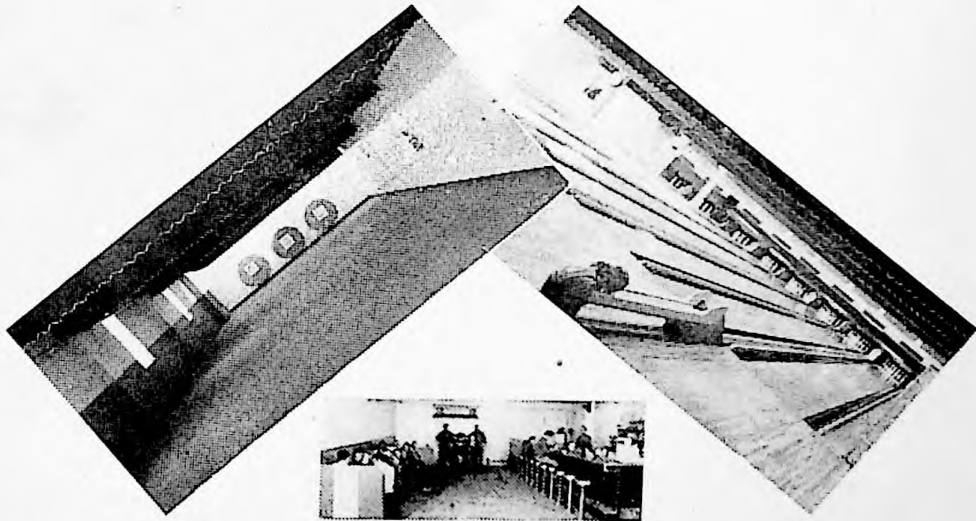
Makers of Fine Printing Plates for Black or Color

Commercial Artists - Photographers

817 W. WASHINGTON BLVD., CHICAGO 7, ILL.

H A P P I N E S S

E
A
L
T
H



BOWLADROME

Bowling, Archery, Recreation, Fun, Good Food.

Grinnell's Newest, Most Beautiful

RE-CREATION CENTER

FUN FOR THE WHOLE FAMILY

CUSTODIANS

Last in the book but always at school before us. Here are the fellows who do the dirty work from kindergarten through senior high. Working the year round, the custodians do a magnificent job in maintaining the buildings so that we have a comfortable place in which to work.

The retirement of Mr. Carter and Mr. Kelly brought new members to this staff. But even though he is growing old, Gunder is still with us, sweeping up after us as he has done for many years.



First row: Art McCaslen, Gunder Martinson, Steve Smith, Ray Hartzell. *Second row:* Bill Turney, Ben Holcomb, Jim Mullins, Mike Hudnut.

—●—
As you wonder and comment,
On the pages of this book,
Just think, if you had made it,
How awful it would look!!

—●—

ERRATA

Identifications for the lower two panels of F. F. A. members on page forty are transposed.

The name of Betty Hunter, in charge of the administration section, was omitted from the annual board staff on page thirty-three.

Answer to many questions: The Corn is GREEN!!!