

# TODDINGTON

## VILLAGE MAGAZINE

Olivia



Emily.J



Haan



A big thank you to the Year 3 pupils in Robins class at Toddington St George School for their fantastic artwork contributions to our cover this edition! Congratulations on having your wonderful drawings published – great work!



Mollie



Emily.B



Niamh

June / July 2025

# Toddington Village Fête

21st - JUNE - 2025

11am - 4pm on the Village Green

## Arena Side Performances

12:45

Irish Dancing

14:00

Jazzercise Demo

13:10

Tai Chi Demo

14:35

Tenacity Dance

13:35

My Theatre Dance

14:50

SOSA Demo

## Beacon Side Music

Sax's Cool Band 11am

Toddington Town Band 12:30pm & 1:30pm

See Page 10 for more details

FOOD & DRINK

Art & Craft



NEVILLE  
FUNERALS

To us, its not just  
another funeral.  
We care for your  
loved ones as  
though they were  
our own.



NEVILLE. Because there is a difference.

Bereavement Support • Flowers • Funerals  
Memorial Masonry • Pre-paid Funeral Plans

With 150 years of compassionate  
service, we are here to reassure and support  
you through a difficult time.

### AMPTHILL

t: 01525 406132

### DUNSTABLE

t: 01582 320290

### LUTON

t: 01582 490005

[www.nevillefuneralservice.com](http://www.nevillefuneralservice.com)





DG  
Property  
Consultants

Matching people  
with property  
since 2000.

# Your key to property happiness.

## Hello Toddington.

Whether you're seeking your forever home, or looking to sell your current property. We've been helping local homeowners take that important step for over 20 years.

We're also specialists in letting, so if you're looking to let your residential property, pop in for a chat as we'd be delighted to find the ideal tenant for you!

Call 01582 580500  
to arrange your  
personal valuation.



2 High Street, Toddington,  
Bedfordshire, LU5 6BY  
[dgpropertyconsultants.co.uk](http://dgpropertyconsultants.co.uk)



*John Saunders & Son*

*Independent Family Funeral Directors  
serving Luton, Dunstable and surrounding  
villages for 150 years*

*Dedicated to providing traditional client care.*

*Because we believe that every funeral should  
be as unique as the person that it's for.*



*Please call us for an informal chat or to ask  
any questions on 01582 731696*

*or visit our website*

*[www.johnsaundersandson.co.uk](http://www.johnsaundersandson.co.uk) to learn more  
about us.*

# CONTENTS

JUNE / JULY 2025

## VILLAGE LIFE & COMMUNITY

- 6-9: Toddington Parish Council
- 10: Toddington Village Fete
- 11: Fete Contest Entry Forms (p.g 11 & 13)
- 12: Chalgrave Church
- 13: Dog Show Entry Form
- 14: St George's Church
- 15: Methodist Church
- 16: Toddington Baptist Church
- 17: Royal British Legion
- 18: U3A
- 19: Toddington Old Scholars & Trefoil Guild
- 20: Toddington Tots
- 21: Garden Party Information
- 22: Tennis Club
- 23: Recipe - LEMON MERINGUE ROULADE
- 24-25: Toddington Rovers
- 28: Countryside Walk
- 29: Toddington Neighbourhood Plan
- 30: Toddington Community Fridge
- 31: Toddington Library
- 32: Community Contributions

## CHILDREN & FAMILIES

- 34-35: Mumday Funday
- 36-37: Children's Poem & Competition

## QUIZ & PUZZLE

- 38: Sudoku

## SPONSORED CONTENT

- 39-44 : Adverts and sponsors

## WHATS ON

- 46: Diary Dates
- 48-49: Village Contact Directory

We are back online at a new address.

**[www.toddnews.co.uk](http://www.toddnews.co.uk)**

We believe this is a magazine for the village and we welcome reader contributions. If you would like to write in please send emails to [toddnews@outlook.com](mailto:toddnews@outlook.com) - Send letters to the Parish Council office in the Village Hall, Leighton Road, Toddington, Beds, LU5 6AN - attention of Toddington Village Magazine.

## Advertisers Price List 2025: (There are 6 editions per year - Bi-monthly)

Advert Size	6 Editions	5 Editions	4 Editions	3 Editions
1/8th Page Advert	£75.00	£62.50	£50.00	£37.50
¼ Page Advert	£150.00	£125.00	£100.00	£75.00
½ Page Advert	£195.00	£162.50	£130.00	£97.50
Standard Full-Page Advert	£385.00	£321.00	£256.50	£192.50
Premium ½ Page Advert	£240.00	£200.00	£160.00	£120.00

Advertisers must submit their artwork by the 1st of the month preceding the edition in which they want their advertisement to appear. For all advertising enquires please email: [toddnews@outlook.com](mailto:toddnews@outlook.com)

The magazine is available online. Scan the QR code with a smart phone to view.



*DISCLAIMER: While all adverts and editorials are placed in good faith by the Toddington Village Magazine committee, the letters and comments published are not the opinion of the committee. Additionally, the committee takes no responsibility for the accuracy of the statements made or non-performance of contract or product, or damage caused by contributors or advertisers, or for loss arising from non-publication of any advertisement.*



# Toddington

## Parish Council



The Parish Office is located in **Toddington Village Hall** and is **open weekdays 9.30am to 11.30am (but closed on Wednesdays)**.

*(Please ring the doorbell if the front door is locked)*

Parish Clerk – Nicola Evans, Assistant Clerk – Annie Wilson

01525 874312 / [info@toddingtonparishcouncil.gov.uk](mailto:info@toddingtonparishcouncil.gov.uk) / [www.toddingtonparishcouncil.gov.uk](http://www.toddingtonparishcouncil.gov.uk)

## Parish Councillors in Toddington

<u>Name</u>	<u>Portfolio</u>	<u>Contact Details</u>
Cllr S Bacon		<a href="mailto:S.Bacon@toddingtonparishcouncil.gov.uk">S.Bacon@toddingtonparishcouncil.gov.uk</a>
Cllr B Belgrave	Highways Liaison	<a href="mailto:B.Belgrave@toddingtonparishcouncil.gov.uk">B.Belgrave@toddingtonparishcouncil.gov.uk</a>
Cllr L Butler	Recreation	<a href="mailto:L.Butler@toddingtonparishcouncil.gov.uk">L.Butler@toddingtonparishcouncil.gov.uk</a>
Cllr T Collins	Planning	<a href="mailto:T.Collins@toddingtonparishcouncil.gov.uk">T.Collins@toddingtonparishcouncil.gov.uk</a>
Cllr S Killinger	Planning	<a href="mailto:S.Killinger@toddingtonparishcouncil.gov.uk">S.Killinger@toddingtonparishcouncil.gov.uk</a>
Cllr J Levinson	Cemetery	<a href="mailto:J.Levinson@toddingtonparishcouncil.gov.uk">J.Levinson@toddingtonparishcouncil.gov.uk</a>
Cllr L Lissaman	Chairperson	<a href="mailto:L.Lissaman@toddingtonparishcouncil.gov.uk">L.Lissaman@toddingtonparishcouncil.gov.uk</a>
Cllr C Peddar	Allotments	<a href="mailto:C.Peddar@toddingtonparishcouncil.gov.uk">C.Peddar@toddingtonparishcouncil.gov.uk</a>
Cllr D Stacey		<a href="mailto:D.Stacey@toddingtonparishcouncil.gov.uk">D.Stacey@toddingtonparishcouncil.gov.uk</a>

Agendas are published on notice boards around the village seven days prior to a meeting and are also on our Website. Notice boards are situated outside Toddington Village Hall, by the Alms Houses opposite St Georges Church, outside Bradford Road Premier and on the Village Green. We do have a 10 minute public participation time at each meeting.

**Meetings Dates for 2025** - Meetings held on the **second Tuesday of each month** in Toddington Village Hall (*Lounge*) and **start at 7:30pm**.

Dates are:- 10<sup>th</sup> June, 8<sup>th</sup> July, 12<sup>th</sup> August, 9<sup>th</sup> September, 14<sup>th</sup> October, 11<sup>th</sup> November and 9<sup>th</sup> December.

## Grants

Grants were presented at the Annual Assembly Meeting in April 2025 to the following groups:

<ul style="list-style-type: none"> <li>• <a href="#">Keech Hospice</a></li> <li>• <a href="#">St George of England Church Toddington (Clock)</a></li> <li>• <a href="#">TAD's Theatre</a></li> <li>• <a href="#">Toddington Area Helping Hands</a></li> <li>• <a href="#">Toddington Community Fridge</a></li> </ul>	<ul style="list-style-type: none"> <li>• <a href="#">Toddington Luncheon Club</a></li> <li>• <a href="#">Toddington Mother, Baby &amp; Toddler Group</a></li> <li>• <a href="#">Toddington Music Makers</a></li> <li>• <a href="#">Toddington Rovers Football Club</a></li> <li>• <a href="#">Toddington Royal British Legion</a></li> </ul>
--	--



- |  |   |
|--|---|
| <ul style="list-style-type: none"><li>• Toddington Singing Café</li><li>• Toddington Town Band</li><li>• Toddington Village Fete Committee</li></ul> | <ul style="list-style-type: none"><li>• Toddington Village Magazine Committee</li></ul> |
|--|---|

## Information / Updates

### **The Glebe**

The Glebe has had some environmental improvements over the last few months.

### **Luton Road Recreation Park**

The Pavilion at Luton Road Rec has now been removed, which enables a much larger space for events to be held.

### **Russell Road Pocket Park**

Thank you to all the residents who turned up to the re-launch of the pocket park and Easter Egg Hunt on Saturday 12<sup>th</sup> April 2025, it was a great success. Thank you again to Bloor Homes for donating the Easter Eggs. The Williams family officially opened the park by the cutting of the ribbon and was so lovely to see so many smiling faces on the day. The sun had her hat on to kick off the Easter Holidays. *(See photographs taken on the day)*

## Dates to Remember

**Toddington Village Fete**  
(Village Green)

~ **Saturday 21<sup>st</sup> June 2025**

**Community Police Surgery**  
(Toddington Village Hall)

~ **Wednesday 9<sup>th</sup> July 2025**  
**(10.30am – 12:30pm)**

**VJ Day Anniversary**  
(Village Green)

~ **Friday 15<sup>th</sup> August 2025**  
*(evening)*

**Pond Clearing** *(Memorial Garden)* ~ **Saturday 25<sup>th</sup> October 2025**

Volunteers to help with our pond clearing day will be required, if you can spare some time to work on this community project, it would be much appreciated.

*[Please contact the Parish Office for more details]*



**Christmas Event**  
*(on the Village Green)*



~ **Saturday 29<sup>th</sup> November 2025**



## **Easter Egg Hunt**





# **Pocket Park Opening**





# Toddington Village Fête

## 21st - JUNE - 2025

11am - 4pm on the Village Green.

### Fun Dog Show

11.00am to 12.30pm

### Baking Contest

Entries to be dropped off at St George church  
between 9am & 10am. Viewing from 11am

The Dog Show & Baking contests are £1 to enter, entry forms are available at Toddington Eye Care or Charlotte Soapy Pups.

You can also request a form by emailing: [toddingtonvillageevents@outlook.com](mailto:toddingtonvillageevents@outlook.com)

Baking contest categories: Y8 & under: 6 Decorated Cupcakes. Adults / Y9 & above : Victoria Sponge and/or 6 Cheese Scones

## Arena Side Performances

12:45

Irish Dancing

14:00

Jazzercise Demo

13:10

Tai Chi Demo

14:35

Tenacity Dance

13:35

My Theatre Dance

14:50

SOSA Demo

## Beacon Side Music

Sax's Cool Band 11am

Toddington Town Band 12:30pm & 1:30pm

### FOOD & DRINK

- Ultimate Whippy
- Scouts BBQ
- Bux Kitchen
- Bee Thai Food
- Three Ravens Rum
- St Georges Church Tea / Coffee / Cake
- Fete Game Ally
- Crafty Doggy Dawdlers
- Stray Cat rescue
- RSPCA Bedfordshire South
- TACO Cat Rescue
- TADS Theatre Group
- Community Fridge
- Toddington Parish Council
- Royal British Legion

### ART & CRAFT STALLS + MANY MORE!

- Brownies & Rainbows
- Leighton Buzard Historical & Archaeological Society
- Police Community Support
- Kathy Glenister Art
- The Bag Lady
- Blossom & Bloom
- Rhubarb & Crochet
- Nanny Nikkie's Crochet & Toys
- Design Shed UK
- Loumin Pottery
- Studio 38 Candles
- Taylors Crafts
- Face Painting
- SMDC Art
- Colour Court Pottery
- AJ Creations



*You can cut out this entry form for the Village Fete Baking Contest  
Dog show entry forms are on the next page (page 13)*

# TODDINGTON BAKING CONTEST



Entry is £1 (cash only). Bakes must be delivered to St George Church between 9 am and 10 am on **Saturday, 21st June (Fete Day)** for Judging. Please bring this form back to Toddington Eye Care or bring it with you on the day. **Prizes and certificates will be awarded on stage at around 3:15 pm!**

Name:

Contact Number:

Please circle your entry category(s) you can enter both adult categories.

Children: School Year 8 and under: **6 Decorated Cupcakes or Muffins**

Adults / School Year 9 & above: **6 Cheese Scones**

Adults / School Year 9 & above: **Victoria Sandwich Cake**

FRIENDS OF TODDINGTON PARISH CHURCH (Reg Charity No 1028538) \*Plant sales \*Books \*Refreshments

## OPEN GARDENS TODDINGTON

Programmes available on the day from the  
Wilkinson Hall or from the gardens  
Adults £5 Children FREE



**NOT TO BE MISSED!**

A day out for all the family – including a children's 'Spot the Clue' competition

**Sponsored by:**

**Panache Hair and Beauty 01525 873031**  
**and**

**Saturday 12<sup>th</sup> July 2025 - 11.00 am to 5.00 pm**  
**Sunday 13<sup>th</sup> July 2025 – 1.00 pm to 6.00 pm**



**DG**  
Property  
Consultants

Toddington's  
estate agent.

d@propertyconsultants.co.uk  
01562 560500

# **All Saints Church Chalgrave**



## **Hello from Chalgrave.**

We would like to let you know that during this time of interregnum together with St Georges Church; we have been working on the Parish profile and will be advertising the profile to prospective applicants for the role of Rector. Interviews will be held in July.

## **Upcoming Services**

**June** 9.30am Holy Communion

**July** 9.30am Holy Communion

## **Fundraising Events**

Our fundraising team have been busy.

We have enjoyed the Toddington Town Band at the Church with a delicious Afternoon Tea, thank you to those who came.

To those who missed out, join us at the Chalgrave Memorial Hall every 4<sup>th</sup> Wednesday of the month for our homemade bakes and friendly company at our Pop up Tearoom.

Dates: June 25<sup>th</sup>, July 23<sup>rd</sup> – Chalgrave Memorial Hall, Tebworth LU7 9QQ

## **Saturday 8<sup>th</sup> November**

Christmas Craft Fayre at Chalgrave Memorial Hall

If you would like a table to sell your craft please contact Alison 07771897451 or email [alisonstone.as1@gmail.com](mailto:alisonstone.as1@gmail.com)

Come and visit our lovely Church, please join us for the Church services or fundraising events.

We are a small but very welcoming group.

Hope to see you soon.

# TODDINGTON FUN DOG SHOW

21st June 2025, 11 AM on the Village Green

## ENTRY FORM

Dogs Name:

Handlers Name:

I certify that my dog is insured / that i am fully liable for my own dog: (signature)

Contact Phone No:

### Class Categories: (tick all you wish to enter)

☐ 11.00am Waggiest Tail

☐ 11.10am Cutest Puppy (up to 12 months)

☐ 11.20am Most Appealing Eyes

☐ 11.30am Prettiest Bitch

☐ 11.40am Handsomest Dog

☐ 11.50am Best Veteran (over 8 years old)

☐ 12.00pm Dog most like its owner

☐ 12.20pm Best Junior Handler - aged 10 and under

☐ 12:30pm

Best in show (chosen from winners)



## Entries cost £1 per class

Entries can be made or dropped off at **Charlottes Soapy Pups** - 32 High Street until 10am on the day. Entry forms and envelopes for the correct money will be available. After this time **entries can be made on the Village Green from 10:45am and up to 15 mins before the class category time.**

Sponsored by



## St George of England Church Toddington

Life at St Georges continues and we look forward to the summer and taking part in the annual Summer Fete. Farewells to Reverend Linda gave us a busy, enjoyable but sad time to be saying "goodbye" to someone who has meant so much to us all. The Friends of St Georges church organised their "annual" St Georges Day Tea Party in the Wilkinson hall. A very big thank you to all who helped make this such a successful event.

As many of you will know there was a meeting for villagers to attend and contribute their ideas and suggestions about the new rector we might have! Your ideas were welcomed and at the time of writing this a small representative committee from Toddington and Chalgrave are compiling a portfolio of what we as a benefice have to offer and what we are hoping to get!! Please pray for everyone involved in the procedure and that we have a satisfactory outcome.

Our regular social events a monthly Coffee Time (3<sup>rd</sup> Saturday) 10 am – 12 noon and a monthly Ploughman's lunch (1st Thursday ) 12 noon – 1 pm continue to take place in the Wilkinson Hall. Everyone is welcome .....so do come and meet us!!

In addition please look out for our posters with the dragon and St Georges flag at the top of the page telling you about future events. We have been asked to hold a **JUMBLE SALE** so watch out for the posters and perhaps you may have things to donate ?? before you come to find a bargain!

As we are sure you know we run the Community Food Larder from 9.30 – 11 am on Saturday mornings ...everyone is welcome to come and help to use up the food which might otherwise be thrown away!! A warm welcome awaits you.

At the village **SUMMER FETE** we shall serve **REFRESHMENTS** in the **Wilkinson hall**. There will also be children's activities and a competition to **MAKE A GARDEN ON A PLATE** .....prizes will be given to all entries. We do hope you will support us as much as you can and enjoy the afternoon.

We will continue to welcome everyone to our regular Sunday services and hope you might join us at 11am on the **last Sunday** of the month when we shall have a **Family service** suitable for **all ages** .....we look forward to seeing you all.

Any enquiries please contact Dee Curtis 01525 872649 who will be pleased to help you.

# Toddington Methodist Church

[www.toddingtonmethodist.org.uk](http://www.toddingtonmethodist.org.uk)



**Minister:** Rev Seung-Wook Jung  
Tel: 01525 372289

## Services

Our services are at 1045 unless otherwise indicated and the first service of the month is held on ZOOM.

### June

- 1<sup>st</sup> ZOOM service – Colin Quine
- 1<sup>st</sup> MUDDY CHURCH 10am
- 8<sup>th</sup> Revd. Seung-wook Jung\*  
Holy Communion in church
- 15<sup>th</sup> Tina Salmon in church
- 22<sup>nd</sup> Tania Stanford in the hall
- 29<sup>th</sup> Local arrangement in the hall

### July

- 6<sup>th</sup> Revd. Seung-wook Jung\*  
Holy Communion in church
- 6<sup>th</sup> MUDDY CHURCH 10am
- 15<sup>th</sup> Circuit Service Dunstable Downs
- 22<sup>nd</sup> John Enejo in the church
- 29<sup>th</sup> Tania Stanford in the hall

NB\* communion services are followed by coffee in the hall.

**MONTHLY COFFEE MORNINGS:** Held on the 1<sup>st</sup> Saturday of each month from 10:30am – 12 in the Wesley Hall.

**GUILD & GAMES:** Meetings are held in the Wesley Hall on the second Tuesday of the month from 2-3.30pm.

**BIBLE STUDY GROUP:** Meet Monday from 2-3.30pm in the Wesley Hall.

**CREATIVE SPACE:** A crafting and social group who meet on the second Sunday of the month from 2.30-5.00pm.

**PUDDING CLUBS:** for children and adults.

## Toddington Methodist Church



**Muddy Church is an opportunity to wander and wonder with God in His amazing creation.**

Muddy Church offers us a space where whole families can come together, friends can meet up, those alone can walk with others and people are invited to share their questions and lives.

We meet on the first Sunday of every month at 10am for 30-45 mins. Wear suitable clothing for exploring the great outdoors whatever the weather.



**We hope to see you on 1st June**

**Refreshments will be provided**

**Contacts:** for further information about any of our activities, or a ZOOM link, then please contact Tania (07957 941481) or Wendy (873871) or email [toddingtonmethodist@yahoo.com](mailto:toddingtonmethodist@yahoo.com)

## **TODDINGTON BAPTIST CHURCH**

We are a small church set back from the road in Station Road not far from The Griffin pub. We are a warm and welcoming church and invite anyone to come along to our services. We have a lay leadership team and are blessed by the commitment of several visiting preachers who give up their time to speak to us, along with our own members who also bring us God's word regularly.

### **SUNDAY SERVICES**

10.30am – All age worship followed by coffee and tea in the lounge.

### **ROCKABYE BABY MUSIC GROUP**

A fun group for 0-5 year olds based around music with time to sing, dance, bounce, jump, clap march, count and play.

Mondays 10am – 11am (term time and some school holidays)

For more details please contact – Becky Boddey – 07725090186

### **HURLY BURLY**

A friendly group for 0-5 year old children with their parents or carers. We have lots of play opportunities and every week there is a different craft for the children to try. At around 10.45 the toys are packed away and the children all join in with singing and rhymes led by Doreen. Refreshments are freely available. A fun time is had by all.

Time: Wednesdays 9.00am – 11.00am (Term Time only) £2 per family

Please contact Doreen Maskell for more information – 07593 355971

### **OPEN DOOR**

Our amazing cook and band of helpers provide a warm lunchtime meal for senior citizens.

Every third Tuesday of the month - 11.45 – 1.00pm approximately (no meal during August)

There is no set fee but donations are greatly appreciated. It is essential to book your space.

Please contact Doreen Maskell for more information – 07593 355971

Toddington Baptist Church is committed to helping the community and regularly donate to food banks and Noah Enterprises.

Church Secretary – Colin Maskell – 07742 163294 Leaders – Annette Duff - 07974 706737

Sue Yirrell – 07725 030718

Kathy Jarvis – 07752 211596

# VJ Day: Celebrating Victory over Japan. The End of World War II

## Introduction

VJ Day, short for Victory over Japan Day, marks the day on which Emperor Hirohito announced the surrender of Imperial Japan to the Allied forces, effectively bringing an end to World War II. This significant event is commemorated on August 15<sup>th</sup> and represented a pivotal moment in world history, symbolizing the defeat of one of the Axis Powers and the restoration of peace.

## The Pacific War

The surrender of Japan was preceded by a long and brutal conflict in the Pacific Theatre. The Pacific War, which began in earnest with the attack on Pearl Harbor on December 7, 1941, saw fierce battles across the islands of the Pacific and in Southeast Asia. Key battles, such as Midway, Guadalcanal, and Iwo Jima, were marked by an immense number of casualties on both sides and showcased the determination of the Allied forces to halt Japanese expansion.

## The Atomic Bombings of Hiroshima and Nagasaki

In August 1945, President Harry S. Truman authorized the use of atomic bombs on the Japanese cities of Hiroshima and Nagasaki. "Little Boy" was dropped on Hiroshima, followed by "Fat Man" on Nagasaki three days later. These bombings resulted in the deaths of approximately 200,000 people, primarily civilians.

## The Legacy of VJ Day

VJ Day remains a significant date in world history, symbolizing the end of one of the deadliest conflicts that humanity has ever known. It serves as a reminder of the horrors of war and the importance of striving for peace. The events surrounding VJ Day also had profound and lasting effects on international relations, leading to the establishment of the United Nations and the onset of the Cold War between the United States and the Soviet Union.



**Friday 15<sup>th</sup> August 2025**  
**VJ Day 80<sup>th</sup> Anniversary**

Watch this space



## u3a – learn, laugh, live

### What is Toddington u3a?

- A local organisation whose aim is to provide the opportunity for those no longer in work to come together and learn for fun, which is affiliated to the Third Age Trust, a national charity.

### Is it for me?

- **Come along to one of our monthly meetings and learn more about us.** We have a varied programme of talks delivered by guest speakers at these meetings, after which tea or coffee is available and you can stay and chat. These are held in Toddington Village Hall on the 3rd Monday of each month. Doors open at 2.00 pm and your first visit is free.

### Where can I find more information?

- **Visit our website** to discover who the speakers will be at our upcoming meetings and find out about our many group activities – these include Art Appreciation, Book Groups, Bridge, Craft, Cryptic Crosswords, Coach Trips, Discussion, Family History, Line Dancing, Meet and Eat, Music Appreciation, Photography, Poetry and Strollers.



[toddington.u3asite.uk](http://toddington.u3asite.uk)



## TODDINGTON OLD SCHOLARS ASSOCIATION

Our Association is the female equivalent of Toddington Old Boys – the ladies that started in 1976 obviously disliked the idea of being classed as ‘old girls’ so the name of Toddington Old Scholars was adopted. The group is for ladies over 35 who have attended either of the Toddington schools. If this applies to you, and you would like to catch up with former school mates, then let us know and you can join us at our Afternoon Tea at Toddington Social Club on June 28<sup>th</sup> .

We have other events planned throughout the year

For more details, please contact Janet Hornsby [hornsbyjanet@btinternet.com](mailto:hornsbyjanet@btinternet.com) or telephone 875203



## Trefoil Guild

Toddington Trefoil Guild hosted a Coffee Morning at the Methodist Wesley Hall in April for our annual fundraiser. A representative from the charity **Kids Out** was present and told us of some of the work they are involved with which was quite harrowing and gave us lots to think about. Thank you to everyone who supported us. We raised over £370 for the charity, by selling cakes and having a terrific ‘Every one a Winner’ Tombola. The following Monday evening we spent with Toddington Carpet Bowls club. We had a great evening learning some of the skills involved – it’d harder than you think but great fun. Thank you to all the Carpet Bowls members for their patience with us.

Look out for us all in the village on 7<sup>th</sup> June when we will be Litter Picking!

For more details about the Toddington group and the other things that we get up to, contact Janet Hornsby [hornsbyjanet@btinternet.com](mailto:hornsbyjanet@btinternet.com) or visit the Trefoil Guild web site [www.trefoilguild.co.uk](http://www.trefoilguild.co.uk)

Come along to...



# toddington tots

**TUESDAY'S**  
**9:30AM-11AM**  
(term time)



at Toddington  
Village Hall

## ACTIVITIES

- Craft
- Sensory play
- Music & Songs
- Baby Area
- Bubbles
- Snacks

**£3 per child**  
(+ £1 for every  
extra child / adult)

Contact Rebecca : 07784342128  
Email : [Toddingtontots@gmail.com](mailto:Toddingtontots@gmail.com)  
Toddington Village Hall, Leighton Road, LU5 6AN

No need to book ahead, just  
come along!



Find us on  
**Facebook**





# GARDEN PARTY

**FREE ENTRY**

**which includes refreshments**

(monetary donations for the work of the garden welcomed)

---

**Sunday 22<sup>nd</sup> June 2025  
1400-1700**

**Toddington Methodist Church**

---

**We are celebrating all creation, (whatever the weather)  
but especially, the Community Garden that occupies  
some of our grounds.**

**Come and see what is growing, get involved  
or just enjoy the company.**

**Activities for the young and young at heart!**



# Toddington Tennis Club

Toddington Tennis Club has been established for over 50 years. It is hidden behind the conifers at the rear of the Recreation Ground, Luton Road in Toddington. We currently have 3 carpet, floodlit courts which were fully



renovated in December 2017 and one hard court, plus a clubhouse with a kitchen, lounge area and toilets/showers. We are lucky enough to have a very skilled LTA Level 4 coach, Paul Hobday, who provides Junior coaching for all abilities on

Wednesdays after school, during school holidays and is available for individual coaching for both junior and adult. Adult group coaching is also available subject to demand. Further details are available on our website:-

<https://clubspark.lta.org.uk/ToddingtonTennisClub>

We are always looking to welcome new members into our club and our rates are very reasonable. There is a special introductory rate of £115 for the year for new adult members, £65 p.a. for juniors/students in further education (free for 9 year olds and under) and only £80 p.a. for weekday adult members. Joining a tennis club is a great way to keep fit, make new friends and have fun! We run adult social play tennis on Tuesday and Thursday Evenings from 7pm and on Sunday Mornings from 10am and also enter Mens, Ladies and Mixed teams into the South Bedfordshire league. We are particularly short of ladies to play in matches so if you used to play tennis and would like to play matches, please email us on [tennis\\_club@hotmail.com](mailto:tennis_club@hotmail.com) or just email us if you are interested in joining the club and would like further details.

We look forward to welcoming you to our club!



# Borrowed recipes

Over many years I have “collected” recipes, odd pages torn from magazines, one or two from each of my collection of cookery books and best of all recipes given by friends. This month, with her permission , I pass on one of those. So with thanks to Carol and Mary Berry.

## LEMON MERINGUE ROULADE

**5 egg whites 150 g caster sugar 1 teaspoon cornflour  
Icing sugar 300ml double cream 6 tablespoons lemon curd  
2 teaspoons lemon juice  
Set the oven to 180 fan/190/ 5 gas**

Line a large roasting tin or large swiss roll tin with non-stick parchment paper. Whisk the egg whites (don't try this by hand !) until very white and fluffy and at least doubled in size, whisk in the sugar spoonful by spoonful while continuing to whisk, and the cornflour, until it is all absorbed. Spoon it into the prepared tin and level it off.

Cook at 180/190/5 for 8-10 minutes until meringue is setting but pale, then reduce to 140/150/2 or 3 gas for 15 minutes until set and gently brown on top. Cool in the tin

Meanwhile whip the cream and whisk in the lemon curd and juice. Lay a sheet of baking paper on the table dust thickly with icing sugar, turn the meringue onto the paper and spread on the cream, roll up using the paper and roll onto a plate. Decorate with icing sugar and fruit as you wish –or not.

No photo, all eaten too quickly. Next month what to do with 5 egg yolks, maybe use them to make lemon curd !!

Thank you.

There are so many great cooks in Toddington, if you would like to share a favourite recipe with the village please email us at: [toddnews@outlook.com](mailto:toddnews@outlook.com)

## TODDINGTON ROVERS FC – COUNTY CUP WINNERS

SUNDAY JUNIOR CUP - 11/04/25 – Barton Rovers

FC SPORTSMAN (LUTON) FIRST 2 – 2 TODDINGTON ROVERS (ADULT)

Pens 3 – 4

Toddington Rovers (Adults) were victorious in the Beds FA County Sunday Junior Cup final, played at Barton Rovers FC on 11<sup>th</sup> April.

A tight game, against a team who play in the division above and were unbeaten this season, finished 2-2 at full time and required penalties to decide the winners.

A wonderful goal from Thomas Walsh on 33 mins put Toddington Rovers into the lead before an equaliser before halftime saw the teams go in at the break level.

FC Sportsman started the 2<sup>nd</sup> half strongly and took a deserved lead in the 55<sup>th</sup> minute. Toddington stayed in the game with some outstanding defending before levelling up in the 81<sup>st</sup> minute with another beautiful goal from Thomas Walsh, flicking the ball over the top of the out-rushing keeper.

The penalty shootout was a close as the 90mins before them, both sides scoring the 1<sup>st</sup> set but FC Sportsman missed their 2<sup>nd</sup> penalty which gave Toddington the edge going into the 4<sup>th</sup> penalties, unfortunately our penalty was missed which gave FC Sportsman a chance to tie the penalties. The penalty was superbly saved by Ben Middleton and this gave Toddington Rovers the win, seeing captain Liam Gray lift the trophy.

A huge congratulations to Harry Drummond and the whole team for their success in the competition. Everyone involved with Toddington Rovers FC are extremely proud of the team.

What makes this victory in the County Cup even more the sweeter for us, as a club, is that the vast majority of the adults team have played for Toddington Rovers all the way through the age groups, from Academy (U6) to Adults and this win is a pat on the back to all the volunteers who have contributed, and continue to do so, to the club.

We are very proud of our achievements over the years. We have provided thousands of children with the opportunity to participate in football. Many have developed self-confidence, fitness and continue to play the game long into adult life and being part of our community has always been very important to this Club. Producing teams that play at the community level is our mainstay.



Highlights: [https://youtu.be/E8EYN6uF5lY?si=\\_ncXB7V4ogxgfNui](https://youtu.be/E8EYN6uF5lY?si=_ncXB7V4ogxgfNui)



**ACCREDITED  
CLUB** ★ ★  
PART OF ENGLAND FOOTBALL

# H

Up to £15,000\*  
deposit contribution!

— HAYFIELD GARDENS, TODDINGTON —



Reserve one of our beautiful 3 bedroom homes at Hayfield Gardens  
and take advantage of up to £15,000 towards your deposit!

**SHOW HOME OPEN DAILY 10<sup>AM</sup>-5<sup>PM</sup>**

Visit [hayfieldhomes.co.uk](https://hayfieldhomes.co.uk) to find out more

**HAYFIELD**

\*T&Cs Apply

# *Toddington Wills*

## *Your Local Will Writing Service*

We offer a no obligation free home visit or a remote service depending on your preference.

We can give advice / recommendations on:

- **Wills**
- **Estate Planning**
- **Trusts**
- **Lasting Powers of Attorney (Health and Property)**
- **Living Wills**
- **Inheritance Tax Planning.**

---

### *Our Unique Guarantee*

If you are not happy with the service provided, we will waive our fee.

But if you are happy, we ask that you tell your family and friends about our service.



*For more information call Steve on 07703 341003  
or email [steve@toddingtonwills.co.uk](mailto:steve@toddingtonwills.co.uk)*

Toddington Wills is a trading style of Legacy Wills UK Ltd

A member of the Society of Will Writers

# TODDINGTON COUNTRYSIDE

Did you know there are a number of lovely walks around the village. One in particular is named after a famous King's son, the Duke of Monmouth, the walk can be found here:

<http://toddington.org.uk/wp-content/uploads/2021/04/Toddington-Monmouth-Way.pdf>

For more information on other walks around the village have a look at this site.  
<https://toddington.info/walks/>

Please do respect our local area and always follow the Countryside Code.



Monmouth-Way



[toddington.info/walks/](https://toddington.info/walks/)



## The Countryside Code

### Respect other people

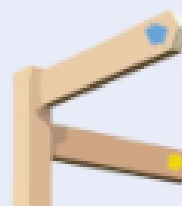
- Consider the local community and other people enjoying the outdoors
- Park carefully so access to gateways and driveways are clear
- Leave gates and property as you find them
- Follow paths but give way to others where it's narrow

### Protect the natural environment

- Leave no trace of your visit, take all your litter home
- Don't have BBQs or fires
- Keep dogs under effective control
- Dog poo - bag it and bin it

### Enjoy the outdoors

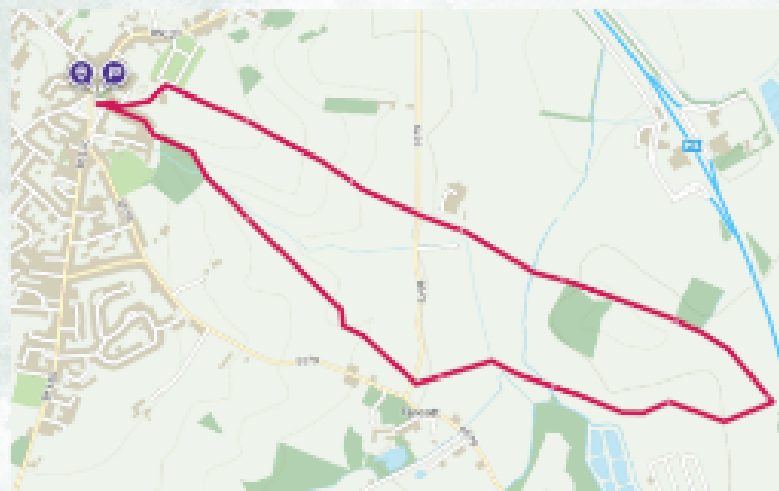
- Plan ahead, check what facilities are open, be prepared
- Follow advice and local signs and obey social distancing measures



## Cowbridge Walk

A pleasant circular walk starting on Toddington village green. In the spring/summer there are cattle in the field from Fancott bridleway towards Toddington, so take care, although the route & fencing have been changed to keep livestock & people apart. The full distance is approximately three and a half miles (6km); or you can take a short cut, making the walk about two miles (3km).

The route passes a footpath access to the Fancott Wood and Meadow which can add a further one-mile loop. Passes near the Fancott pub for refreshments on route.





# SHAPING TODDINGTON'S FUTURE

## What is a Neighbourhood Plan?

A Neighbourhood Plan is a powerful tool that gives our community a real voice in shaping the future of Toddington. It allows us – the residents, local groups, and businesses – to influence how our village develops over the coming years, from the types of homes built to the protection of green spaces and the character of our streets.

Unlike general consultations, a Neighbourhood Plan is a formal part of the planning system. Once adopted, it carries legal weight and must be considered in planning decisions alongside local and national policies. This means it can directly affect what gets built, where, and how.

### **Key elements of the plan include:**

- **Housing:** Identifying the right mix of homes to meet local needs.
- **Environment:** Protecting our natural and historic assets.
- **Infrastructure:** Improving local services, facilities, and connectivity.
- **Design and Character:** Ensuring new development fits in with the village's look and feel.
- **Local Economy:** Supporting local shops, services, and employment opportunities.

Most importantly, the Neighbourhood Plan is driven by community engagement. It's not written for the community – it's written by the community. Every opinion matters. Through surveys, open events, workshops, and consultations, residents help shape the priorities and policies that will guide future decisions.

Your voice is essential. Whether you've lived here all your life or just recently moved in, your insights and ideas will help ensure that Toddington remains a thriving, attractive, and sustainable place to live for generations to come.

Keep an eye out for upcoming events and ways to get involved. Let's shape our future together.

### **For more information:**

---

**[info@toddingtonplan.co.uk](mailto:info@toddingtonplan.co.uk)**

# TODDINGTON COMMUNITY FRIDGE

Every Saturday morning at Wilkinson Hall

We're Toddington Community Fridge, a volunteer-run food sustainability initiative open to everyone, focusing on preventing good food from going to waste. Although we are not a food bank, we aim to assist local people affected by the ongoing cost-of-living crisis, especially working families.

Our Saturday morning stall redistributes approximately 150kg of surplus food every week, including fruit, vegetables, bread, cakes, and limited dry goods. What's available depends on what's been donated; please follow our social media for updates!

We intend to keep this service free but must cover our running costs, including insurance, fuel, food safety compliance training, and hall hire. We are all volunteers, and all contributions go towards running the service and supporting local people in need.

## What's on offer and how does it work?

- ✓ Everyone is welcome to visit and select up to 3kg of food per household in a single bag.
- ✓ Some items are one or two per household, please note the signage.
- ✓ We'll weigh your food as you're leaving; the only data we collect is your postcode.

## DONATE HERE



Mid Bedfordshire  
Community Fridge CIC  
04-14-50  
59934877



Follow us on social media!

  /toddingtoncommunityfridge

**09:30-11:30**  
**EVERY SATURDAY**  
AT WILKINSON HALL

# Toddington Library

## Library volunteers

We wanted to start this news round-up with a massive 'Thank You' to our volunteers, Seren, Jess, Samantha, Sheila and Pat. They work on average one/two hours per week helping with customer enquiries, shelf checks, coffee mornings and displays amongst other things. Thank you all, you're amazing!

### Congratulations!

Eryn won our Easter treasure hunt competition during half term. She was delighted with her prizes, an Easter Egg, a book and a puzzle.



## What's on?

Last month we started a new session that we call '**Cuppa & Company**'. Every Wednesday 2-5pm you can drop in for a friendly chat and a cuppa with other library users. It has proved very popular, everyone is welcome.

July 18<sup>th</sup> is the start of the national **Summer Reading Challenge**. This years theme is 'The Story Garden'. During the school holidays we will have **FREE** crafts available every day until the final day on Sept 6<sup>th</sup>. Children can join the challenge any time during this period.

### **Opening Hours**

Mon: Closed

Wed: 2-6pm

Fri: 9am-1pm/2-6pm

Sun: Closed

Tue: 9am-1pm

Thu: 9am-1pm

Sat: 9am-4pm

# COMMUNITY CONTRIBUTIONS

Are there any media studies or budding journalists that might like to contribute and be our roving reporter in the village? It would look good on a future CV!

We know the success of the village magazine relies on interesting and engaging content from our community. This is a call out to any local groups, individuals who would like to contribute an article, a photo a story?

Below is a little message and photo from Reader Helen, M on her recent trip down under. Do you have a recent trip you would like to share? Email: [toddnews@outlook.com](mailto:toddnews@outlook.com)



## POST CARD

*Staying with family, pool time, breakfasts out by the beach, commuting by ferry to Circular Quays with the bridge and Opera house, onto Darling Harbour with Madame Tussaud's, Sealife, Chinese Gardens (serene except on Chinese New Year). Out to the Blue Mountains on Saturday, two hour drive to endless woods and hills. Out to Barrenjoey Lighthouse, a steep climb, to see the Pacific and the Pittwater almost meeting. Most surprising such a mixture of weather, idyllic sometimes, but sometimes humid and thunderstorms sometimes wet and cool. Hope you can make something of this !! X*

*Helen*

MAGAZINE READER

\_\_\_\_\_  
\_\_\_\_\_

TODDINGTON,  
BEDS, UK

\_\_\_\_\_

# MUSIC CONCERT

JAZZ, POP, BOSSA NOVA

At Toddington Methodist Church

**14<sup>TH</sup> JUNE 2025**

**3PM-5PM**

REFRESHMENTS INCLUDED

**TICKETS £8 PER PERSON**

Tickets are available from  
Margo Ellard – 01525 635299  
Wendy Hulance – 01525 873871

**The  
Simply  
Sax  
Band**



Proceeds in aid of church maintenance

## CHALGRAVE MEMORIAL HALL

TEBWORTH LU7 9QQ

## POP UP TEA ROOM

2025 DATES FOR YOUR DIARY  
EVERY 4<sup>TH</sup> WEDNESDAY 11AM-1PM

JANUARY 22<sup>ND</sup>

FEBRUARY 26<sup>TH</sup>

MARCH 26<sup>TH</sup>

APRIL 23<sup>RD</sup>

MAY 28<sup>TH</sup>

JUNE 25<sup>TH</sup>

JULY 23<sup>RD</sup>

AUGUST BREAK

SEPTEMBER 24<sup>TH</sup>

OCTOBER 22<sup>ND</sup>

NOVEMBER 26<sup>TH</sup>

DECEMBER 10<sup>TH</sup>

CHALGRAVE CHURCH AND CHALGRAVE MEMORIAL HALL:  
WORKING TOGETHER FOR THE COMMUNITY

FRIENDS OF TODDINGTON PARISH CHURCH

Registered Charity Number 1028538

# EVENING GARDEN PARTY

with wine and  
canapés

**SATURDAY 7<sup>th</sup> June  
2025**

**7.00 pm**

21, HIGH STREET,  
TODDINGTON, LU5 6BX

**Tickets in advance £10**

**From**

**Dee Curtis 01525 872649**

**Fran Brown 01525 872501 or**

**Sue Ballinger 01525 630460**



'We play loads of fun games, do activities and challenges and sometimes get badges'  
**Matilda**

**Rainbows**  
Toddington Guiding

**Girls play, learn and have tons of fun**  
for ages 5 to 7

**Mondays, 5.00 - 5.45**

At Rainbows, we welcome all girls to play, learn and have fun in a creative, safe space for all abilities.

  
girlguiding

Registered charity number: Exempted from registration

Join a local Rainbows group [girlguiding.org.uk/joinus](https://www.girlguiding.org.uk/joinus)

# Mumday Funday

*Things to do in Herts, Beds, Bucks, and beyond*

Here's a few new ideas from me which are perfect for summer. Remember that there are loads more ideas on my socials and website if you are looking for days out inspiration!

## Watford Cycle Hub

Watford, WD18 9QD

**Travel time from Toddington:** around 35mins

**Cost:** Free to visit and park

A safe place for scooters or cycling with pretend roads, roundabouts, traffic lights, and road signs. Plus there is a cafe, toilets, sports courts, and a good playground.

Excellent free day out!



## The Beach

Frosts Woburn Sands, MK17 8UE

**Travel time from Toddington:** around 20mins

**Cost:** £5.99 per child, one adult free, additional adults £1

Huge sand pit, range of toys, and new for this year there is a new role play area too. It's fully covered so good in all weather, and the staff play games and have bubble machines too.





## ***Knebworth House***

Stevenage, SG1 2AX

**Travel time from Toddington:** around 40 mins

**Cost:** £14pp, or £52 for a family of 4 for the gardens/play area if booked online.

A fantastic play area with various equipment, water play, and huge slides. Beautiful gardens with sculptures and a dinosaur trail.

## ***Electra Boat MK***

Milton Keynes, various locations

**Travel time from Toddington:** around 25mins

**Cost:** Varies depending on cruise type, from £3 per child and £7.50 per adult.

Go on a electric canal boat ride, with spotter sheets for kids to tick off and expert guides telling you about key landmarks. Plus the boat has a toilet and a café bar. We have been many times and have enjoyed every trip.



## ***Hitchin Lavender***

Hitchin, SG5 3UA

**Travel time from Toddington:** around 30 mins

**Cost:** £9 per adult, £7 for kids 3+

The UK's largest PYO lavender (PYO for £4 extra per bag). Plus they have wildflowers and Sunflowers too. Lots of photo ops including tractors for children, and there is a play area, museum, shop and cafe.



@mumday\_funday

Mumday Funday

[mumdayfunday.wordpress.com](http://mumdayfunday.wordpress.com)



## Rodney Seagull Chips, Ice Cream And Cake

Chips, ice cream and cake...Everywhere!

It is all too much for Rodney seagull.  
Treats are all he can see.  
So excited - his face full of glee.

Rodney swoops, glides and soars,  
Heading towards the shore.

Down, down as fast as he could dive!  
He feels so free. So alive.

Chips, ice cream and cake. Getting closer!

The food is not far from hungry Rodney.  
Tasty treats his beak can't wait to eat.  
So excited he starts to wiggle his feet.

Plunging, sailing, and twirling around.  
Rodney can see the sandy ground.

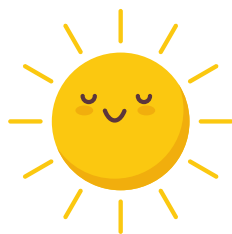
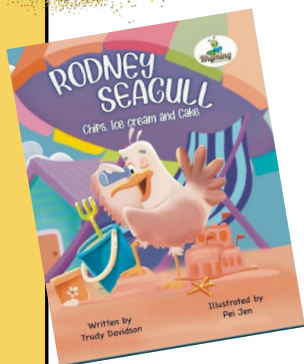
Dive...dive...hover and swoop.  
Rodney does a loop the loop.

Chips, ice-cream or cake. Which first?

Swoop - Rodney aims for a cone.  
A hand appears...Stop...He flies up alone.

Dive - Rodney aims for a chip.  
He doesn't make it...Stop...He meets a toy ship.

Plunge - he aims for some cake.  
A hat appears...Stop...He puts on the brake.





Plunge - he aims for some cake.  
A hat appears...Stop...He puts on the brake.

Rodney begins to screech and squawk.  
As he lands upon the sidewalk.

A lady stops and says, "How sweet!"  
Chips are thrown at Rodney's feet.

Rodney laughs and gives a squeal -  
He quickly eats his yummy meal.

Rodney gives a hoot and coo.  
A man stops and says, "Clever you!"  
Ice cream lands on the path -  
Rodney gives a satisfied laugh.

Rodney starts to croon and cry.  
A lady stops and says, "Talented guy!"  
Cake is offered to his beak.  
Rodney fills each cheek.

Chips, ice cream or cake. No more!

Rodney's tummy was full and round,  
As he rested on the ground.

Happy and full, Rodney sat and thought,  
An important lesson he had just been taught.

No longer would he dive to steal.  
Instead, he would sing and earn his tasty meal.

Rodney swoops, gliding back to his nest.  
He was ready to have a jolly good rest.

Sweet dreams Rodney.



I will  
choose one lucky  
winner randomly  
on the  
30th June



# SUDOKU

**Sudoku #1335 (Easy)**

				1	2
3			8		
	4		6		2 3
		2			9
8		5	1	4	
	9 8		4	2	
6					3
	1		9		6

**Sudoku #1335 (Medium)**

4	8		6				
		3					9
				2	1		
						9	2
2	7			3	5	4	
7	6					5	8
		1	3	6			
				7			

**Sudoku #1336 (Easy)**

					8	4
1	7					
		6	1	9		3
		7				6
	5					4 9
6	8		5	1		
8	4	5				
				7	3	5

**Sudoku #1335 (Hard)**

	3	2		4	8		5
	8		1	3	2		9
7				5			
3	4						8
		9					4
5					3		
	2			8	5		
			4			3	

Solution can be found here with the #ref number <https://www.puzzles.ca/sudoku/>



### Toddington Fisheries

Park Road, Toddington, Beds, LU5 6HH

Open daily from 6am

Contact Tina: 07896 788 957 for

any questions or

email: Lydonj6@aol.com

TODDINGTON SCOUT GROUP

## ANNUAL BALL

SATURDAY, 11TH  
OCTOBER 2025

6:30PM - MIDNIGHT

DRINKS & CANAPES

DINNER CROSS KEYS, PULLEX HILL

AUCTION & RAFFLE

£50PP

Book your tickets now! Visit us for more information at our website: [www.toddingtonscoutgroup.org](http://www.toddingtonscoutgroup.org)

Contact Karen: 07798 147932 or [gd@toddingtonscoutgroup.org](mailto:gd@toddingtonscoutgroup.org)

### SF Babysitters

Babysitting service for weddings,  
special occasions, daytime  
and evenings out.



☎ 0797 952 1900

✉ [sandy@sfbabysitters.co.uk](mailto:sandy@sfbabysitters.co.uk)

🌐 [www.sfbabysitters.co.uk](http://www.sfbabysitters.co.uk)



## IT SUPPORT & SERVICES

Are you worried about the upcoming end  
of security update support for Windows  
10 in October this year?

Is your PC or Mac playing up?

I live in Toddington & provide IT support  
in the area.

Home visits and repairs on PC, Mac &  
Chrome Book.

Free 30 minute inspection on workshop  
hardware repairs. Feel free to call, I'm  
always happy to discuss your IT needs.

- HARDWARE REPAIR
- HOME NETWORK
- CLOUD SOLUTIONS
- IT CONSULTING
- DATA RECOVERY
- CYBERSECURITY



07933850997

[hello@andy-it.co.uk](mailto:hello@andy-it.co.uk)

**ENROL NOW**

## pilates & stretch class with lauren



Lauren's popular classes are suitable for all abilities. They improve strength, posture, balance & flexibility and help with relaxation and mental wellbeing!!

Every **Tuesday morning** from 9.30-10.30am and  
**Friday morning** from 9.00-10.00am at Todington  
Methodist Church Hall

Every **Thursday evening** from 6.30-7.30pm at  
Todington St George CofE School **only £9.00 a class**  
(£7.50 when block booked)

Call Lauren for more information or to  
book your place: 07772 424153 or  
email: [lauren@ignitedanceandfitness.co.uk](mailto:lauren@ignitedanceandfitness.co.uk)



# PILATES

**IGNITE DANCE & FITNESS** • [www.ignitedanceandfitness.co.uk](http://www.ignitedanceandfitness.co.uk)



New Boilers (Fixed) from £1000 ex.VAT  
5-10 Year Warranty  
Free Quotations



**BAXI**

**ideal**

**Vaillant**

**POTTERTON**

**VIEHMANN**



Ideal, Vaillant and Worcester-Bosch Accredited

## Gas, LPG, Oil and Hvac

- Boiler Breakdowns, Installations and Servicing
- Unvented Hot Water Systems
- Power-flushing
- Central Heating Repair / Maintenance
- Under Floor Heating
- Air Conditioning Installation, Service and Repair
- Air Source Heat Pump Installation, Service and Repair

**Local Family Run Business**

**Contact Chris: 07706 077132 / [CMWGAS.COM](http://CMWGAS.COM)**



At Toddington Eyecare, we take pride in our status as an independent eye care practice, boasting over two decades of collective experience in Optometry, Ophthalmology, and Optical Dispensing. Our commitment to excellence ensures that you receive the highest standard of care right in your community.

Discover our comprehensive range of services:

- Eye Examinations
- OCT (Ocular Health) Scan
- Optomap Wide-Field Retinal Imaging
- Refractive Surgery Consultations
- Pre and Post Cataract Surgery Care
- Glaucoma and Ocular Hypertension Screening
- Acute and Emergency Eyecare
- Spectacles Dispensing
- Contact Lens Assessments and Supply

Contact us via our website, telephone, email or simply visit us at 18 High Street, Toddington, LU5 6BY

01525 875099

info@toddingtoneyecare.com  
www.toddingtoneyecare.com



**StotenGillam**  
chartered accountants  
chartered tax advisers

Providing an outstanding professional, cost effective and friendly service to our business and personal clients.

Call now for  
a free initial  
consultation  
**01582 608601**



#### OUR SERVICES

##### Taxation

- Pay the minimum tax

##### Compliance

- Business administration

##### Support

- Grow your business

##### Start-ups

- Your business a reality

##### Get to know you

- Consultancy & advice

☎ 01582 608601 ✉ enquiries@stotengillam.co.uk  
[www.stotengillam.co.uk](http://www.stotengillam.co.uk)

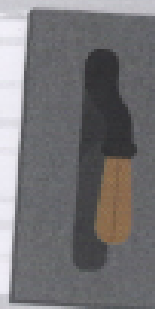
Alban House, 99 High Street South, Dunstable, LU6 3SF

# Nathan Squire Plastering

Over 30 years experience

45 Randall drive  
Toddington  
LU5 6FE

07368 222982  
Nathansquire@live.co.uk



ESTABLISHED 28 YEARS  
**DLS ELITE TRAVEL**  
 CHAUFFEUR SERVICE  
 CENTRAL BEDFORDSHIRE  
 MERCEDES E-CLASS SALOON

Airport Transfers - Business Travel  
 Concerts & Sporting Events - A to B Transfers

www.dlselecttravel.com  
 01525 872666  
 07464 617706



VISA M/C DEBIT CARD PAYMENT SYSTEM

## TREVOR HORN WINDOW & DOOR REPAIRS

- Window Repairs
- Replace Misted Glass
- General Door Repairs
- Fix or Replace Hinges
- Replace or Adjust Locks

CALL FOR A FREE QUOTE!  
**07908 464 618**

TRUSTED LOCAL EXPERT  
 SERVING BEDFORDSHIRE

**REPAIR, DONT REPLACE!**





## Laptop & Computer

Printer, Apple Mac, Setup, Repairs Virus infection, Internet, Mail setup Network, Data recovery, Home/Office computer problems 7days services from £40. Qualified & Experienced. No Fix - No Fee, Your local IT support. We come to you  
 PcLaprepairs@gmail.com  
 01525 306316 - 07925 338435

# Austin & Carnley Solicitors



Experts in Conveyancing, Wills & Trusts, Employment, Commercial Property, Family, Probate, Dispute Resolution, Motoring and Criminal Defence

**Your lawyers for life®**

☎ 01525 372140  
 ✉ office@austinandcarnley.co.uk  
 🌐 www.austinandcarnley.co.uk



# Auction Sales & Valuations

Valuation, collection and auction service of individual items through to complete property and commercial clearances.

Call for a free no obligation quote or email  
**info@peacockauction.co.uk**

## SALE ENTRIES NOW INVITED

Antique & Modern Furniture • Clocks • Books • Ceramics & Glassware • Pictures & Prints • Bicycles  
Jewellery & Watches • Collectables • Garage Tools & Equipment • Household Electrical Items • Office  
Furniture & Equipment • Retail Products & Stock • Vehicles • Horticultural & Commercial Equipment  
Building Materials • Garden Furniture & Effects

**www.peacockauction.co.uk**



**W&H PEACOCK**  
**AUCTIONEERS & VALUERS**  
**01234 266366**



**Eastcotts Park,  
Wallis Way,  
Bedford,  
MK42 0PE**

## BLUEBELL LANDSCAPES

OVER 25 YEARS EXPERIENCE OF  
LANDSCAPING AND GARDEN  
DESIGN RHS BTECH

- Patios
- Brickwork
- Sleeper Work
- Turfing
- Pergolas
- Fencing
- Border Design
- Pruning

Low Maintenance Gardens  
Free estimates  
Fully Insured

**Tel: 01525 794434**  
**Mob: 07752 159184**

**- Washing Machines -  
Dryers - Dishwashers  
- Electric Ovens -**

**Repairs, Servicing & Sales**

A local family business offering  
a quality service at a competitive price

Est. 1981



**Tel: 01525 860148**



**or Tim Downing direct on  
07969 545 276**

A Member of the White Goods Trade Association  
Fully Insured



# TODDINGTON

INDEPENDENT FINANCIAL ADVICE



## DO YOU NEED FINANCIAL ADVICE?

We can help you to review your current or proposed,

**Mortgages, Insurances, Pensions & Investments, Equity Release, Inheritance Tax, Wills and Trusts, or a general review of your current position?**

'As a mortgage is secured against your home, it may be repossessed if you do not keep up the mortgage repayments. The financial conduct authority does not regulate tax and estate planning or will planning'

**Unlike some TV adverts we don't charge a fee for equity release, so no broker fees added to your loan!** 'Equity released from your home will be secured against it'

### LOCAL OFFICE: Toddington

Contact: Philip Hadlow

Tel/Fax: 01525 874100

Mobile 07768 277 532

info@toddingtonifa.co.uk

www.toddingtonifa.co.uk

**Free Will with Investments & Pensions placed through us of over £50,000 and within 6 months of investment**  
**Talk to us for a free initial consultation**

Toddington Independent Financial Advice Ltd is authorised and regulated by the Financial Conduct Authority.

Registered office: The Stables, Griffin Farm, Conger Lane, Toddington, Bedfordshire, LU5 8BT

Registration Number: 760687 Company Number: 9321606



## TOP MAN DRY CLEANERS

IRONING | LAUNDRY | ALTERATIONS | REPAIRS

### CLEANING SERVICES

- ✓ Dry Cleaning
- ✓ Leather & Suede Cleaning
- ✓ Ironing Service
- ✓ Wedding Dress
- ✓ Duvet, Bedding & Mattress toppers
- ✓ Curtains    ✓ Laundry Service

### CONTACT US

**01525 875980**  
**07459 906412**

Monday to Friday: 9am - 6pm

Saturday: 9am - 5pm

2 Lincoln Way, Harlington, LU5 8NA



SCAN TO CALL

## YOUR LOCAL DRY CLEANERS & CLOTHING SPECIALISTS



### REPAIR SERVICES

- ✓ Garment Repair    ✓ Alteration
- ✓ Curtain Lining Changes
- ✓ Cushion cover dry clean    ✓ Sofa Cover



**FREE  
PICKUP &  
DELIVERY**



## Charlotte's Soapy Pups Dog Groomers

32 High Street, Toddington, LUS 6BY  
Charlotte White : Qualified Pet Groomer

*Pop in and say hello !!  
Call or What's app me, to book an  
appointment.*

[charlottessoapypups@gmail.com](mailto:charlottessoapypups@gmail.com)

☎ 07368909066

**TADS Theatre Ensemble**  
**SUMMER SCHOOL**  
11th-15th or 18th-22nd August 2025  
TADS THEATRE  
CORNER LANE  
TODDINGTON  
LU5 6BT

- SINGING
- ACTING
- DANCING
- PERFORMANCE SKILLS
- FULL SHOW ON THE FRIDAY!

10am-4pm  
(1pm-6pm Friday)  
REGISTER HERE!  
[chairman@tadstheatre.org](mailto:chairman@tadstheatre.org)

£200 FOR THE WEEK.  
£100 PER ADDITIONAL WEEKEND  
12 TICKETS INCLUDED PER CHILD

PLEASE PREPARE YOUR FOLDER

## TODDINGTON GUIDE HALL TO HIRE

The Guiding Hall in St Georges Close is available for hire daytime and evenings and for parties.

**£10** per hour for regular use

**£15** per hour for occasional hire

**Email: [Melanieparker62@outlook.com](mailto:Melanieparker62@outlook.com)**

**Call: 01525 875844**

### FACILITIES ARE AS FOLLOWS

- Disabled access.
- Seating for 50
- Stage area
- Table tennis table
- Fully equipped kitchen



The below lists dates and events planned during the year, for further information please contact the relevant organiser. Contact details can be found on page 48-49, Toddington Village Contacts

Weekly events and activities			
Day	Event Name	Time	Location
Monday	Bible study group	2:00pm – 3:30pm	Methodist Wesley Hall
Monday	Children's Dance	3:30pm – 7:30pm	St George's School
Monday	Rockabye Baby: Baby & u5's	10:00am – 11:00am	Toddington Baptist Church
Monday	Rainbows	5:00pm – 5:45pm	Guide Building
Monday	Brownies	6:00pm – 7:30pm	Guide Building
Monday	Beavers	6:30pm – 7:30pm	Scout Hut
Monday	Carpet Bowling club	7:00pm – 9:00pm	Village Hall
Tuesday	Toddington Tots: Baby & u5's	9:30am – 11:00am	Village Hall
Tuesday	Pilates & Stretch	9:30am – 10.30am	Methodist Wesley Hall
Tuesday	Knitting group	10:30am	Wilkinson Hall
Tuesday	Cubs	6:15pm – 7:45pm	Scout Hut
Wednesday	Community Garden	10:00am – 11:30am	Methodist Wesley Hall
Wednesday	Hurly Burly: Baby & u5's	9:00am – 11:00am	Toddington Baptist Church
Wednesday	Wednesday Art Group	10:00am – 12:00pm	Methodist Wesley Hall
Wednesday	Carpet Bowls Club	2:00pm – 5:00pm	Village Hall
Thursday	Children's Dance	3.30pm – 6.00pm	St George's School
Thursday	Pilates & Stretch	6:30pm – 7:30pm	St George's School
Thursday	Toddington Singing Café	10:30am – 11:45am	Village Hall
Friday	Pilates & Stretch	9:00am – 10:00am	Methodist Wesley Hall
Friday	Painting for pleasure	10:30am	Wilkinson Hall
Friday	Community Garden	2:00pm – 4:00pm	Methodist Wesley Hall
Friday	Toddington Music Makers	6:30pm – 7:30pm	Methodist Wesley Hall
Friday	Scouts	7:00pm – 8:30pm	Scout Hut
Saturday	Community Fridge	9:30am – 11:00am	Wilkinson Hall

Monthly events and activities			
Day	Event Name	Time	Location
1 <sup>st</sup> Sunday	Muddy Church	10:00am	Methodist Wesley Hall
2 <sup>nd</sup> Sunday	Creative Space	2:00pm - 3.30pm	Methodist Wesley Hall
3 <sup>rd</sup> Monday	U3A Open Meeting	2.00pm	Village Hall
2 <sup>nd</sup> Tuesday	Guild & Games	2:00pm - 3.30pm	Methodist Wesley Hall
1 <sup>st</sup> Wednesday	Pudding Club	7:00pm	Methodist Wesley Hall
1 <sup>st</sup> Thursday	Ploughman's Lunch	12:00pm	Wilkinson Hall
2 <sup>nd</sup> Thursday	Time with Friends	2;00pm	Wilkinson Hall
3 <sup>rd</sup> Thursday	St George's Fellowship	2:00pm	Wilkinson Hall
4 <sup>th</sup> Friday	Messy Church	3:30pm	Wilkinson Hall
1 <sup>st</sup> Saturday	Coffee Morning	10:30 – 12:00am	Methodist Wesley Hall
2 <sup>nd</sup> Saturday	Coffee Morning	10:00am	Wilkinson Hall

June & July Events			
Date	Event Name	Details	Location
Saturday 21 <sup>st</sup> June	Toddington Village Fete 2025 – See page 10 for details		Village Green
Sunday 22 <sup>nd</sup> June	Garden Party – 2:00pm – 5:00pm – See page 21		Methodist Church
Wednesday 9 <sup>th</sup> July	Community Police Surgery: Pop-up information stall, crime prevention & most importantly we are there to listen to any concerns you may wish to speak to us about.		Village Hall
Saturday 12 <sup>th</sup> and Sunday 13 <sup>th</sup> July	Open Gardens Toddington – See page 11		Wilkinson Hall
Sunday 13 <sup>th</sup> July - 12 Noon	Wingfield Car and Automobile Show		Wingfield Village

# CHARITY OPEN GARDENS

CAKE - DRINKS - TOURS

6 JULY 2025



TODDINGTON PARK

[www.toddington-park.co.uk](http://www.toddington-park.co.uk)

We are opening the gates to Toddington Park this July for our Charity Open Garden. Come along to discover the history of The Park, learn about our recent rewilding projects - from installing wild bee hives to planting nearly a mile of hedgerow, and take a tour with the owners with highlights including the Victorian Dairy and converted Coach House.

## History of The Park

The Park has a long and interesting history. Thomas Cheney (previously of Chenies Manor) used his inheritance to build nearby Toddington Manor in 1560, which was later purchased by John Cooper in 1808. John's son inherited Toddington Manor in 1824 but it was in no state to live in, so they built Park House next door, named after their London family home, and known in Toddington simply as 'The Park'.

In 1898 the house was leased by Robert Standish Sievier, a journalist and race horse owner. He commissioned the groundsman of Lords to build him a cricket pitch and the M.C.C., led by W.G. Grace, visited to play Sieviers XI.

After sitting empty from 1905 to 1907, Park House was sold to Colonel Mercer of Moggerhanger Park. It was requisitioned as a base for the Women's Land Army in 1939 before falling back into private ownership in 1962.

**Tea, coffee, soft drinks and cake will be available to purchase on the day with all profits going to charity. Tickets booked in advance are £8 per adult, £6 per child - Book at [www.toddington-park.co.uk/open-days](http://www.toddington-park.co.uk/open-days)**

*A limited number of tickets will also be available to buy on the day for £10 per adult, £8 per child.*

*If you would like to join a Tour and Q&A, tickets are £16 each including admission. Booking for tours is in advance only and tours will run at 12.30pm and 2pm.*

*Please note, no dogs are allowed on site. Suitable footwear recommended and parking will be on grass. If you require wheelchair access please contact us in advance so that we can make suitable arrangements for you.*

# Toddington Village Contacts

HEALTH CONTACTS		Defibrillator Locations
Bedford Hospital	01234 355122	Toddington Library, Market Square LU5 6BP - On the wall outside
Doctor's surgery	01525 872222	Toddington Social & Services Club - On the wall outside to the left
Dentist	01525 577066	Parkfields Middle school - Left of front entrance
Luton and Dunstable Hospital	01582 491166	Unit 5 Crowbush Farm, Luton Road, Toddington, LU5 6HU
Opticians Toddington Eyecare	01525 875099	<b>Life Threatening Medical Emergency: 999</b> <b>Non life-threatening medical need: 111</b>
Osteopath	01525 875474	
Pharmacy Tuda	01525 872093	

## UTILITIES

Gas emergency		0800 11199
Electricity emergency	Ring 105 to be put through to your local network operator	105
Police Station Luton		01582 401212

## ADMINISTRATIVE & SOCIAL SUPPORT SERVICES

Bedfordshire age UK	<a href="https://www.ageuk.org.uk/bedfordshire">https://www.ageuk.org.uk/bedfordshire</a>	01234 360510
Beds domestic abuse partnership	<a href="https://bedsdrv.org.uk">https://bedsdrv.org.uk</a>	
Citizens Advice Dunstable	<a href="https://www.dunstablecab.org.uk">https://www.dunstablecab.org.uk</a>	01582 670003
Citizens Advice Consumer service	Trading Standards advise	03454 04 05 06
Mental health Beds open door young people	01234360388 /	07922105200
Post Office at Nisa		0345722344
Police non-serious crimes anti-social behave or anonymously via Crime stoppers	101 /	0800 555 111
Scams report scams or suspected scams to Action Fraud		0300 123 2040
Toddington Library		03003008069

## CHURCHES

All Saints Chalgrave	Sandy Ryan	01525 874748 / 07989645040
Friends of St George's Church	f.brown950@btinternet.com	01525 872501
St George's Toddington Church	Dee Curtis	01525 872649
St George's Church Bellringers	Peter Boon	01908 584181
Toddington Methodist Church	Rev Seung Jeung	01525 372289
Toddington Baptist Church	secretary@toddingtonbaptist.com	

## Central Bedfordshire Council

### Responsibilities: Potholes, Footpaths, Lighting, Trees, Pollution, Planning

General Information	customers@centralbedfordshire.gov.uk	0300 3008301
Reporting Problems	<a href="http://www.centralbedfordshire.gov.uk/reportit">www.centralbedfordshire.gov.uk/reportit</a> - Smartphone App search: 'FixMyStreet' in app store	
Report emergency	Report an emergency, such as a street light with wires exposed	0300 300 8049
Pollution	<a href="mailto:pollution@centralbedfordshire.gov.uk">pollution@centralbedfordshire.gov.uk</a>	0300 300 8302
Planning	planning applications & enforcement issues	0300 300 8670
Unitary Ward Councillors:	Cllr Mary Walsh	mary.walsh@centralbedfordshire.gov.uk 0300 300 8514
	Cllr Gary Purser	gary.purser@centralbedfordshire.gov.uk 0300 300 8548
Central Beds safeguarding		0300 300 8585 / 0300 300 8123
Bin Collection Information	<a href="https://tinyurl.com/Toddnews-Bins">https://tinyurl.com/Toddnews-Bins</a>	

## Toddington Parish Council, Other Village PC's & MP

### Responsibilities: Luton Road Recreational Ground, Russel Rd Play Park, Crowbush, The Glebe, Memorial Garden, Village Green, Cemetery, Allotments

Toddington Parish Council General Contact	<a href="mailto:info@toddingtonparishcouncil.gov.uk">info@toddingtonparishcouncil.gov.uk</a>	01525 874312
Chalton Parish Council	<a href="mailto:clerk@chalton-pc.gov.uk">clerk@chalton-pc.gov.uk</a>	
Chalgrave Parish Council	<a href="mailto:phil@philparryassociates.co.uk">phil@philparryassociates.co.uk</a>	
Blake Stephenson	<a href="mailto:blake.stephenson.mp@parliament.uk">blake.stephenson.mp@parliament.uk</a>	

## SCHOOLS

Chalton Lower School		01525 872354
Harlington Upper School		01525 755100
Parkfields Middle School	schooladmin@parkfieldsschool.co.uk	01525 872555
St George's Lower School	admin@toddstg.co.uk	01525 872360
Toddington Childcare	admin@toddingtongchildcare.org.uk	

## SPORT AND EXERCISE

Chalgrave Manor Golf Club		01525 876556
Indoor Carpet Bowls	Sue.bollins@ntlworld.com	07758 680406
Pilates Classes - Lauren Houghton	lauren@ignitedanceandfitness.co.uk	
Toddington Ramblers – Yvonne Bevan	yvonnebevan0806@gmail.com	
Table tennis group - Brian Roberts		01525 872295
Tennis Club – Geoff Betts	tennis_club@hotmail.com	
Toddington Rovers FC	secretary@toddingtonroversfc.co.uk	
Toddington Trotters Sunday run – Lisa		07787 503854
Toddington Walks and Rides	www.toddington.info	
Well-being walks – Walk for Health	Kathy Bocutt	07900694001

## GROUPS FOR YOUNG PEOPLE

Guiding – Melanie Parker	melanieparker62@outlook.com	01525 875844
Hurley Burley - Baby and under 5's	Doreen Maskell	07593 355971
Toddington Tots - Baby and under 5's –	facebook.com/toddingtontots - toddingtontots@gmail.com - Nicki	
Messy Church	Dee Curis	01525 872649
My Theatre Dance – Lauren Houghton	lauren@ignitedanceandfitness.co.uk	
Mumday Funday days out – Lauren Moss	laurenlouisemoss88@gmail.com	
Rock-a-bye-baby - Becky Boddey	becky@rockandredeemervineyard.com	07376 019437
Scouting – Karen Calder	gls@toddingtonscoutgroup.org - www.toddingtonscoutonline.co.uk	
St George's Youth group	Dee Curis	01525 872649

## HALLS

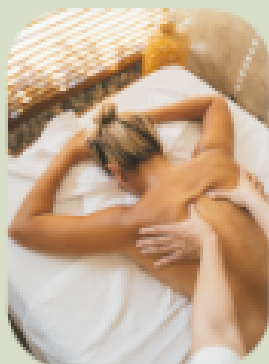
Chalgrave Memorial Hall – Jane Spiers	chalgravememorialhall@gmail.com	07803378548
Guide building – Melanie Parker	melanieparker62@outlook.com	01525 875844
Methodist Wesley Hall		01525 873871
Social and Services Club	admin@toddingtonsocialclub.co.uk	
Village Hall	Avril Clark	01525 872571
Wilkinson Hall	Dee Curtis	01525 872649

## OTHER GROUPS AND ACTIVITIES

British Legion – John Wood	jpwood@btconnect.com	07771 774518
Chalgrave pop-up tearoom – Sandy Ryan	Sandra-ryan@sky.com	07989645040
Friday Lunch club	Rachel Williams	01525 872548
For Painting for Pleasure & St George's Fellowship & Tuesday Knitters	Dee Curis	01525 872649
Music Makers – Ruth Robinson	ruth.christine.robinson@gmail.com	
Open Door lunch club - Colin Maskell		01525 752463
Toddington Trefoil Guild	hornsbyjanet@btinternet.com	01525 875203
Social and services club	admin@toddingtonsocialclub.co.uk	
TADS theatre group – Michelle Standon	chairman@tadstheatre.org	
Toddington Music Society – Fran Brown	f.brown950@btinternet.com	01525 872501
Toddington Old Boys Assoc – Len Hull	LenHull@btinternet.com	
Todd Old Scholars – Janet Hornsby	hornsbyjanet@btinternet.com	
Todd singing café – Ruth Robinson	ruth.christine.robinson@gmail.com	
Toddington Town Band	Toddingtontownband@gmail.com - toddingtontownband.weebly.com	
Toddington Magazine	toddnews@outlook.com	
U3A – Sue Barrow	suej.barrow@outlook.com	07712 810671
Rotary Club of Dunstable Downs	tonygtlds@gmail.com	01525 874393
Toddington Music Makers - Ruth Robinson	info@toddingtonmusicmakers.co.uk	01525 874326
Toddington Singing Café - Ruth Robinson	info@toddingtonsingingcafe.co.uk	01525 874326



## Experience the Benefits of Menopause Massage



- ✦ Relieve hot flushes, insomnia & anxiety
- ✦ Ease muscle tension & joint discomfort
- ✦ Boost emotional well-being through deep relaxation

Appointments available in Toddington and Caddington  
Limited spaces each week – gift vouchers available!

☎ Call Marie 0789 456 0484

📧 [bamboo\\_wellness\\_for\\_women](mailto:bamboo_wellness_for_women)



## DO YOU NEED A TRUSTWORTHY ELECTRICIAN?

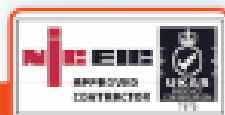
Murray's Electrical Ltd is an established family-run business covering Bedfordshire, Hertfordshire, Buckinghamshire, and London. Our electricians are experts in all domestic, commercial, and industrial sectors of the industry. Murray's Electrical is known for its workmanship, honesty, and professionalism.

### DOMESTIC SERVICES:

- Rewires
- Extensions
- Kitchen refurbishments
- Summer Houses
- Home Offices
- EICR

### COMMERCIAL SERVICES:

- Shop Fitting
- Office Install/Refurb/Maintenance
- School/College Maintenance (DBS checked)
- Warehouse Install/Refurb/Maintenance
- LED Lighting Upgrades
- Plant Rooms
- EICR



Contact us via 07943835220 or [murrayelec54@gmail.com](mailto:murrayelec54@gmail.com)  
FOR YOUR FREE NO OBLIGATION QUOTE.



# Laser & Skin Therapy

Established in Toddington for over 13 years, we specialise in skin and body treatments using award-winning, state-of-the-art technologies.

---

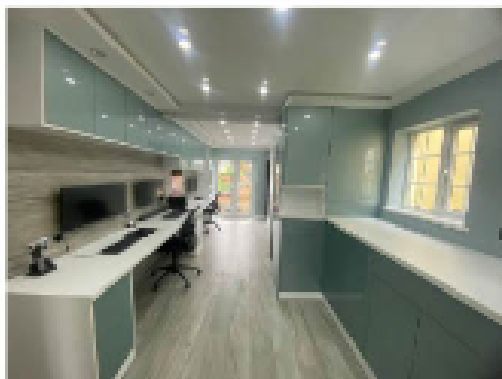
- Hair removal
  - Tattoo removal
  - Red vein removal
  - Rosacea treatments
  - Pigmentation removal
  - Specialist, luxury facials
  - Microneedling
  - Dermalux LED
  - Mole screening
  - CryoPen skin tag, wart, verruca, lesion removal
  - Microsuction ear wax removal with Jackie
- 



01525 872547

[www.toddingtonlaserclinic.co.uk](http://www.toddingtonlaserclinic.co.uk)  
1st Floor, 42 Market Square

We will help you reveal your home's potential in ways you never dreamed possible.



Our process is collaborative from design to build

A one-stop-shop incorporating all trades from our friendly team.

Save money by improving rather than moving.

**Complete Bespoke Furniture Making Service**  
**ArtiCAD® Design and Planning**

Kitchens \* Bathrooms \* Bedrooms  
Design \* Supply \* Install  
Supply Only Also Available

Tel: 01525 633448 Mob: 07956 222299 [info@claridgeinteriors.co.uk](mailto:info@claridgeinteriors.co.uk)

[www.claridgeinteriors.co.uk](http://www.claridgeinteriors.co.uk)