



TODDINGTON

VILLAGE MAGAZINE

August / September 2025

FRIENDS OF TODDINGTON PARISH CHURCH

Registered Charity Number 1028538

BEETLE DRIVE



FRIDAY 19th SEPTEMBER 2025

at 2.30 pm

AT WILKINSON HALL, TODDINGTON

Come along for an afternoon of fun.

**Tickets £5 to tea/coffee/soft drinks
and cake**

**Prizes for the winning table
Raffle**

**To book please contact Fran Brown on 01525
872501 or Dee Curtis on 01525 872649 or
pay at the door**



IT SUPPORT & SERVICES

Are you worried about the upcoming end of security update support for Windows 10 in October this year? Is your PC or Mac playing up?

I live in Toddington & provide IT support in the area.

Home visits and repairs on PC, Mac & Chrome Book.

Free 30 minute inspection on workshop hardware repairs. Feel free to call, I'm always happy to discuss your IT needs.

- HARDWARE REPAIR
- HOME NETWORK
- CLOUD SOLUTIONS
- IT CONSULTING
- DATA RECOVERY
- CYBERSECURITY



07933850997

hello@andy-it.co.uk



To us, its not just
another funeral.
We care for your
loved ones as
though they were
our own.



NEVILLE. Because there is a difference.

Bereavement Support • Flowers • Funerals
Memorial Masonry • Pre-paid Funeral Plans

With 150 years of compassionate service, we are here to reassure and support you through a difficult time.

AMPTHILL

t: 01525 406132

DUNSTABLE

t: 01582 320290

LUTON

t: 01582 490005

www.nevillefuneralservice.com





DG
Property
Consultants

Matching people
with property
since 2000.

Your key to property happiness.

Hello Toddington.

Whether you're seeking your forever home, or looking to sell your current property. We've been helping local homeowners take that important step for over 20 years.

We're also specialists in letting, so if you're looking to let your residential property, pop in for a chat as we'd be delighted to find the ideal tenant for you!

Call 01582 580500
to arrange your
personal valuation.



2 High Street, Toddington,
Bedfordshire, LU5 6BY
dgpropertyconsultants.co.uk



John Saunders & Son

*Independent Family Funeral Directors
serving Luton, Dunstable and surrounding
villages for 150 years*

Dedicated to providing traditional client care.

*Because we believe that every funeral should
be as unique as the person that it's for.*



*Please call us for an informal chat or to ask
any questions on 01582 731696*

or visit our website

*www.johnsaundersandson.co.uk to learn more
about us.*

CONTENTS

AUGUST / SEPTEMBER 2025

VILLAGE LIFE & COMMUNITY

- 6-8: Toddington Parish Council
- 9 - 11 : Toddington Village Fete Photos
- 12: Toddington Old Boys' Association
- 13: Toddington Music Makers
- 14: Friends of Toddington Parish Church
- 15: Tennis Club
- 16: St George's Church
- 17: Toddington Neighbourhood Plan
- 18: Toddington Methodist Church
- 19: Toddington Baptist Church
- 20:U3A
- 21: Bedfordshire Fire and Rescue Service
- 22: All Saints Church Chalgrave -
- 23: Blake Stephenson MP - Local Update
- 24: RBL
- 25: Toddington Music Society
- 28: Recipe - BBQ Marinade
- 29: Toddington St George School
- 30: Rotary Club - Dunstable Downs
- 31: Parkfields School
- 32: Community Garden

QUIZ & PUZZLE

- 33: Sudoku / Star Battle

CHILDREN & FAMILIES

- 36: Toddington Beaver Scouts
- 37 - 38: Mumday Funday
- 40: Library

SPONSORED CONTENT

- 39-45 : Adverts and sponsors

WHATS ON

- 47:Diary Dates
- 48-49:Village Contact Directory

We are back online at a new address.

www.toddnews.co.uk

We believe this is a magazine for the village and we welcome reader contributions. If you would like to write in please send emails to toddnews@outlook.com - Send letters to the Parish Council office in the Village Hall, Leighton Road, Toddington, Beds, LU5 6AN - attention of Toddington Village Magazine.

Advertisers Price List 2025: (There are 6 editions per year - Bi-monthly)

Advert Size	6 Editions	5 Editions	4 Editions	3 Editions
1/8th Page Advert	£75.00	£62.50	£50.00	£37.50
¼ Page Advert	£150.00	£125.00	£100.00	£75.00
½ Page Advert	£195.00	£162.50	£130.00	£97.50
Standard Full-Page Advert	£385.00	£321.00	£256.50	£192.50
Premium ½ Page Advert	£240.00	£200.00	£160.00	£120.00

Advertisers must submit their artwork by the 1st of the month preceding the edition in which they want their advertisement to appear. For all advertising enquires please email: toddnews@outlook.com

The magazine is available online. Scan the QR code with a smart phone to view.



DISCLAIMER: While all adverts and editorials are placed in good faith by the Toddington Village Magazine committee, the letters and comments published are not the opinion of the committee. Additionally, the committee takes no responsibility for the accuracy of the statements made or non-performance of contract or product, or damage caused by contributors or advertisers, or for loss arising from non-publication of any advertisement.



Toddington

Parish Council



Toddington Parish Council's Mission Statement

Is to represent and serve the local Community by preserving the village's character, supporting sustainable development, and enhancing Toddington Community life for our residents

The Parish Office is located in **Toddington Village Hall** and is open weekdays **9.30am to 11.30am (but closed on Wednesdays)**.

(Please ring the door bell if the front door is locked)

Parish Clerk – Nicola Evans, Assistant Clerk – Annie Wilson

01525 874312 / info@toddingtonparishcouncil.gov.uk / www.toddingtonparishcouncil.gov.uk

Parish Councillors in Toddington

<u>Name</u>	<u>Portfolio</u>	<u>Contact Details</u>
Cllr S Bacon	Recreation/Communication/Events	S.Bacon@toddingtonparishcouncil.gov.uk
Cllr B Belgrave	Highways / Police Advisory	B.Belgrave@toddingtonparishcouncil.gov.uk
Cllr L Butler	Recreation / Events	L.Butler@toddingtonparishcouncil.gov.uk
Cllr T Collins	Planning Advisory	T.Collins@toddingtonparishcouncil.gov.uk
Cllr S Killinger	Planning Advisory	S.Killinger@toddingtonparishcouncil.gov.uk
Cllr J Levinson	Cemetery	J.Levinson@toddingtonparishcouncil.gov.uk
Cllr L Lissaman	Chairperson / Street Scene / Memorial Garden / Events	L.Lissaman@toddingtonparishcouncil.gov.uk
Cllr C Peddar	Allotments / Events	C.Peddar@toddingtonparishcouncil.gov.uk
Cllr D Stacey		D.Stacey@toddingtonparishcouncil.gov.uk

Agendas are published on notice boards around the village seven days prior to a meeting and are also on our **Website**. **Notice boards** are situated outside Toddington Village Hall, by the Alms Houses (*opposite St Georges Church*), Bradford Road and on the Village Green. We do have a 10 minute public participation time at each meeting.

Meetings Dates for 2025 - Meetings held on the **second Tuesday of each month** in Toddington Village Hall (*Lounge*) and **start at 7:30pm**.

Dates are:- 12th August, 9th September, 14th October, 11th November and 9th December.





Event Dates

Pond Clearing (*Memorial Garden*) ~ Saturday 25th October 2025

Volunteers to help with our pond clearing day will be required, if you can spare some time to work on this community project, it would be much appreciated.

[Please contact the Parish Office for more details]



Christmas Event (on the Village Green)



~ Saturday 29th November 2025

Works at The Glebe

Thank you to the Chiltern Conservation Team Volunteers for the work undertaken at The Glebe and the surrounding footpaths on 18th June 2025 in the sunshine.





Toddington Village Fete ~ 21st June 2025



Toddington Parish Council held a stall at the Village Fete on Saturday 21st June 2025. The stall was visited by many residents, which helps the Parish Council keep up-to-date and listen to the needs of the Community.

Understanding the Role of the Parish Council



Where does a Parish Council fit in government?

Parish Councils are the first tier of local government, they represent the communities closest to the people and operate below Unitary Authorities.

TODDINGTON PARISH COUNCIL's Roles and Responsibilities?

Toddington Parish Council's focus is on local services and representation, such as:

-  **Commenting on planning applications**
-  **Managing village greens, open spaces and allotments**
-  **Providing and maintaining play areas and Memorial Garden**
-  **Installing and caring for benches, bins, planters and noticeboards**
-  **Advocating for local Transport and Highway improvements**
-  **Raising funds through a Council Tax precept**
-  **Funding local groups and running Community Events**
-  **Cemetery**

Website Address: www.Toddingtonparishcouncil.gov.uk

Telephone Number: 01525-874312 Email: info@Toddingtonparishcouncil.gov.uk

Central Bedfordshire Council's Responsibilities

- **Planning Applications**
- **Highways, roads and pavements** – Responsible for maintenance, potholes, Rights of Way, footpaths, fly-tipping
- **Waste & Recycling**
- **Street Lighting**
- **Public Transport** – Manages Services
- **Social Care, Education, Housing**
- **Council Tax** – Collects and manages benefits
- **Parking**

Customer Services/Main Switchboard:

0300 300 8000 or Email

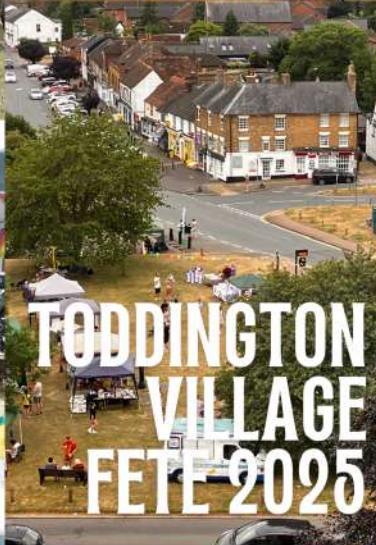
customer.services@centralbedfordshire.gov.uk

Report IT/Fix My Street



Mission Statement

Is to represent and serve the local Community by preserving the village's character, supporting sustainable development, and enhancing Toddington Community Life for our residents







Inaugural Meeting was held on Saturday, 3rd July 1943, ten men, who had been boys together in Toddington over thirty years ago, met at a luncheon in the Holborn Restaurant London, and the Toddington Old Boys' Association was formed, and still continues.

The Association motto is; 'To summon up remembrance of things past'

A Committee runs affairs, looks after the welfare of our Members, and organises events. Members meet twice a year for a luncheon, in April at our AGM, and in October, when we have a guest speaker. These lunches are held at the Toddington Social and Services Club.

The Association sponsors awards at the two village schools, St. Georges, and Parkfields.

We facilitate the annual Pancake Day excursion for year 4 pupils from St. Georges, to climb Conger Hill, and listen to the witch cooking their pancakes. Something we did ourselves all those years ago. A tradition, that is worth retaining.

Jointly with our sister Association, The Toddington Old Scholars, we organise a Christmas function, again held in the Toddington Social and Services Club.

On Remembrance Sunday, we assist the Royal British Legion, at the Service on the Green, by providing the collectors with buckets for donations, and we lay a wreath at the cenotaph.

On 3rd July each year we celebrate 'Founders Day'. This year we attended a lunch at The Woburn, in Woburn, to remember the ten men who meet 82 years ago, and formed the Association.

Section 3 of our Constitution is on Membership:

3.1 Membership of the Association will be open to any male person over the age of 35 who were either born in the Village of Toddington, or in early life attended one of the schools located in the village, or has lived in the village for more than 10 years. Membership is open to member's male blood relatives, over the age of 35,

3.2 New members may join at the Annual General Meeting, or at the October Luncheon subject to vacancies. The new member must be proposed by an existing member of the Association, at least 7 days prior to the meeting, and seconded by another member at the Annual General Meeting, or the October Luncheon. That proposed new member must be in attendance at the Annual General Meeting, or October Luncheon

The Constitution has just recently been amended, to allow a male person who has lived in the village for more than 10 years, and over the age of 35, to be proposed for membership.
IF YOU QUALIFY – COME AND JOIN US

If you wish for further information, please contact the Secretary, Hugh Elliott,
Email, toba.secretary@yahoo.com



Ready for Samba!



Children's Workshop

This July Toddington MusicMakers celebrated its 20th birthday.

We have evolved through many different stages in our development.

Initially, we were a music group formed with members of St George's Church playing for church services and holding social events complete with food, music and quizzes.

We then progressed to becoming a community group as we wanted to reach more musicians in Toddington and surrounding areas. This proved a successful venture as we welcomed musicians from Toddington, Harlington, Dunstable and Flitwick.



As a community group we have been successful in our outreach events. We took part in the Queen's Jubilee Parade as a marching samba band, we have led sing-a-longs for the residents of Crescent Court, we have

held music workshops for the Rainbows and Brownies and taken part in the children's Summer holiday clubs hoping to inspire the next generation by showing them that music-making is fun and for everyone.

The fortunes of the group have waxed and waned over the years as members have moved onto university or moved away from the area to explore pastures new.

We are now experiencing a revival in our fortunes and are delighted to have welcomed 4 new members from Weatherfield Academy this year as well as an octogenarium euphonium player. Their enthusiasm and love of playing their instruments is infectious and we all have a renewed passion for what we love doing: playing music.

We are indebted to Sarah, our musical director, whose patient encouragement and musical expertise has guided us through our musical journey.

Through all this time we have remained committed to our philosophy that music should be accessible to everyone, whatever their age or level of ability. We have many in our group who have either physical or learning difficulties but they each play an important part in making us what we are and it is a privilege to see each one come into their own when playing their musical instrument.

We enjoy playing for sing-a-longs for other community groups such as Toddington Singing Café, the Pudding Club and the Community Garden

where we encourage everyone to join in and have fun making music together.

If you think this might be the right group for you then come and visit us on a Friday evening 6.30-7.30 at the Methodist Church Hall where you will receive a warm and friendly welcome.

For more information

Contact: Ruth on 07939 288 504

Email: info@toddingtonmusicmakers.co.uk



FRIENDS OF TODDINGTON PARISH CHURCH

Registered Charity Number 1028538

Hymns & Pimms

**AT ST GEORGE OF ENGLAND
CHURCH, TODDINGTON**

SUNDAY 3rd AUGUST 2025 at 6.00 pm



**Come along to sing your favourite
hymns while enjoying a refreshing
glass of Pimms
(non-alcoholic drinks also available)**

RETIRING COLLECTION

Toddington Tennis Club

Toddington Tennis Club has been established for over 50 years. It is hidden behind the conifers at the rear of the Recreation Ground, Luton Road in Toddington. We currently have 3 carpet, floodlit courts which were fully renovated in December 2017 and one hard court, plus a clubhouse with a kitchen, lounge area and toilets/showers. We are lucky enough to have a very skilled LTA Level 4 coach, Paul Hobday, who provides Junior coaching for all abilities on Wednesdays after school, during school holidays and is available for individual coaching for both junior and adult. Adult group coaching is also available subject to demand. Further details are available on our website:- <https://clubspark.lta.org.uk/ToddingtonTennisClub>

We are always looking to welcome new members into our club and our rates are very reasonable. There is a special introductory rate of £115 for the year for new adult members, £65 p.a. for juniors/students in further education



(free for 9 year olds and under) and only £80 p.a. for weekday adult members. Joining a tennis club is a great way to keep fit, make new friends and have fun! We run adult social play tennis on Tuesday and Thursday Evenings from 7pm and on Sunday Mornings from 10am and also enter Mens, Ladies and Mixed teams into the South Bedfordshire league.

The courts are also available to the public for booking at £10 per court per hour during daylight hours. Courts 1-3 (carpet courts) have restrictions to cater for usage by our club members (social sessions, league & tournament matches and for coaching sessions) but court 4 (hard surface) is available to book throughout the week and weekend (48 hours notice needed).

Please email us on tennis_club@hotmail.com for further details.

We look forward to welcoming you to our club!

St George of England Toddington

Welcome to our report looking back over the last two months and looking forward to the future. We have continued to hold our monthly Coffee Mornings, at 10.30am on 2nd Saturday, Ploughman's lunches, 12 noon on 1st Thursday, both in the Wilkinson Hall as is the Toddington Fridge, every Saturday 9.30am (but not run by the church) and all are very welcome.

We provided refreshments, and a very successful Tombola, at the Village Fete and the dragon visited the church, which made the visiting vicar smile on Sunday.

We have been having and continue to have an 11am Sunday service, a 9.30am Monday service and a monthly 6.30pm evensong. A new venture, shared with other Toddington churches, is a monthly Sunday 9am Prayer Breakfast when we can all meet, eat and pray together for about an hour before we all go to our own services. We met in June and July but future dates are TBC!

As September draws on we think of Harvest and both Toddington and Chalgrave will be celebrating Harvest Festival on Sunday 14th September when Bishop Richard will be taking the services at both churches

We look forward to having a new Rector and the role has been advertised and we hope to have news of applicants soon, until then we are very grateful to our visiting vicars.

We have had some very busy Messy Church sessions when the children up to 9 years old come with an adult and have a bible based story, lots of fun crafts and a meal together. We hope to run art and craft sessions on Wednesdays in August from 10.30am to 1.30pm.

We also hope to have a Scarecrow festival again this year on 30th and 31st August. Let Dee Curtis have details of your scarecrow so it can go onto a map.

Any enquires about St George's please contact Dee Curtis 01525 872649 who will be pleased to help you

Thank you.

The Future of Toddington

Shaping Growth and Development

YOUR VILLAGE. YOUR VOICE. YOUR FUTURE.



A Neighbourhood Plan (NP) is a Community led initiative, independent of both the Local Authority and Parish Council (although our initiative is fully supported by the PC and funded by it). We are a group of local Toddington residents who believe in a bright future for our village – a future that we must all help to shape, enhance and protect for the benefit of those who live here now, and will live here in the future.

We'd like to thank everyone for their support and feedback so far at recent events, including the football fun day, village fête and the very well attended drop-in sessions recently held in The Wilkinson Hall.

The level of interest and engagement has been amazing and truly encouraging. It's clear that people care deeply about what happens in Toddington – not just today, but in the years to come. To help us build a strong and meaningful plan, we are asking all residents (and anyone who has an interest in the Designated Area*) to continue sharing their thoughts and feelings. You might consider the following as prompts for your response:

- Housing – What types of homes do we need? How can we ensure new development is affordable, appropriate, and in keeping with the village's character?
- Green Spaces & Heritage – Which local places matter most to you? How can we better protect our parks, fields, footpaths, trees, and historic buildings?
- Transport & Infrastructure – What are your concerns or hopes for roads, parking, public transport, cycling routes, and broadband connectivity?
- Local Economy, Education and Wellbeing – How can we support our shops, services, schools and local businesses to thrive in the future?
- Sustainability – What would make Toddington more environmentally friendly and resilient for future generations?

A Neighbourhood Plan once Adopted*, becomes a legal document that must be considered when deciding Planning Applications. It gives us – the people who live here – real influence over how Toddington evolves.

Whether you've lived here for decades or just a few months, your voice really matters. This is your chance to help shape the future of Toddington.

The NP process is set out under the National and Local Planning Frameworks and, as such, we need to follow a predetermined approach. We have had a very encouraging response to our plea for help and support - and we will be contacting everyone who left their details in due course to explain how we think we can involve you. Please bear with us - we are all volunteers, doing our best to steer the project.

* Please refer to our website for further details.

www.toddingtonplan.co.uk or contact us via our email address: Info@toddingtonplan.co.uk

For more information, background details, and to have your say, please visit our website or contact us directly. The website is evolving and will soon have a lot more detail added. We have been asked about previous attempts that have been made to get a NP Adopted. You can see these on our website. Unfortunately, these attempts faltered so the village has never had an Adopted plan.

We want to work with the broader community of Toddington to ensure that our beautiful village grows in a way that reflects our shared values, respects its Heritage and meets the needs of those who live and work in the area - now and in the future.

Remember: Your Village. Your Voice. Your future.

Thank you.

Neighbourhood Plan Steering Committee

Visit: www.toddingtonplan.co.uk Email: info@toddingtonplan.co.uk

Toddington Methodist Church

www.toddingtonmethodist.org.uk



Minister: Rev Seung-Wook Jung
Tel: 01525 372289

Services

Our services are at 1045 unless otherwise indicated.

August

- 3rd MUDDY CHURCH at 10am
- 10th Revd. Seung-wook Jung*
Holy Communion in church
- 17th Roger Owers in church
- 24th Tania Stanford in the church
- 31st Local arrangement in the hall

September

- 7th ZOOM service
- 7th MUDDY CHURCH 10am
- 14th Revd. Seung-wook Jung*
Holy Communion in church
- 21st Local Preacher in the church
- 28th Tania Stanford -Harvest service
Followed by a harvest lunch.

NB* this service will be followed by refreshments and an extraordinary church council meeting in the hall.

MONTHLY COFFEE MORNINGS: Held on the 1st Saturday of each month from 10:30am – 12 in the Wesley Hall.

GUILD & GAMES: Meetings are held in the Wesley Hall on the second Tuesday of the month from 2-3.30pm.

BIBLE STUDY GROUP: Meet Monday from 2-3.30pm in the Wesley Hall.

CREATIVE SPACE: A crafting and social group who meet on the second Sunday of the month from 2.30-5.00pm.

PUDDING CLUBS: for children and adults.

Toddington Methodist Church

Summer Holiday Club

with games, crafts, drama, music and lots of fun!

Every Friday in August

For children aged 3-12

from 10am to 2pm

£5
Per child
Per day

Refreshments will be provided
but please send your child with a packed lunch.
Pre-booking is essential

Please see the website for more details and to make bookings
www.toddingtonmethodist.org.uk

Contacts: for further information about any of our activities, or a ZOOM link, then please contact Tania (07957 941481) or Wendy (873871) or email toddingtonmethodist@yahoo.com

TODDINGTON BAPTIST CHURCH

We are a small church set back from the road in Station Road not far from The Griffin pub. We are a warm and welcoming church and invite anyone to come along to our services. We have a lay leadership team and are blessed by the commitment of several visiting preachers who give up their time to speak to us, along with our own members who also bring us God's word regularly.

SUNDAY SERVICES

10.30am – All age worship followed by coffee and tea in the lounge.

ROCKABYE BABY MUSIC GROUP

A fun group for 0-5 year olds based around music with time to sing, dance, bounce, jump, clap march, count and play.

Mondays 10am – 11am (term time and some school holidays)

For more details please contact – Becky Boddey – 07725090186

HURLY BURLY

A friendly group for 0-5 year old children with their parents or carers. We have lots of play opportunities and every week there is a different craft for the children to try. At around 10.45 the toys are packed away and the children all join in with singing and rhymes led by Doreen. Refreshments are freely available. A fun time is had by all.

Time: Wednesdays 9.00am – 11.00am (Term Time only) £2 per family

Please contact Doreen Maskell for more information – 07593 355971

OPEN DOOR

Our amazing cook and band of helpers provide a warm lunchtime meal for senior citizens.

Every third Tuesday of the month - 11.45 – 1.00pm approximately (no meal during August)

There is no set fee but donations are greatly appreciated. It is essential to book your space.

Please contact Doreen Maskell for more information – 07593 355971

Toddington Baptist Church is committed to helping the community and regularly donate to food banks and Noah Enterprises.

Church Secretary – Colin Maskell – 07742 163294 Leaders – Annette Duff - 07974 706737
Sue Yirrell – 07725 030718 Kathy Jarvis – 07752 211596

u3a – learn, laugh, live

What is Toddington u3a?

- A local organisation whose aim is to provide the opportunity for those no longer in work to come together and learn for fun, which is affiliated to the Third Age Trust, a national charity.

Is it for me?

- **Come along to one of our monthly meetings from September and learn more about us.** We have a varied programme of talks delivered by guest speakers, after which tea or coffee is available and you can stay and chat. These are held in Toddington Village Hall on the 3rd Monday of each month. Doors open at 2.00 pm and your first visit is free.

Where can I find more information?

- **Visit our website** to discover who the speakers will be at our upcoming meetings and find out about our many group activities – these include Art Appreciation, Book Groups, Bridge, Craft, Cryptic Crosswords, Coach Trips, Discussion, Family History, Meet and Eat, Music Appreciation, Photography, Poetry and Strollers.



toddington.u3asite.uk

Toddington Village Fete

'Guess how many sweets are in the jar'

Thank you to everyone who visited the u3a stall and paid 50p to guess how many sweets were in the jar.

Guesses ranged from 37 to 297, but the correct number was 109. And one lady guessed correctly.

I raised £27, which has been donated to Keech Hospice in Luton.

Thanks again



ABI'S READY

- Florist
- Trains at the gym
- ON-CALL FIREFIGHTER

JOIN YOUR LOCAL STATION ON CALL

Live or work within 6 minutes of a fire station?
You could be an on-call firefighter like Abi

Find your calling...
bedsfire.gov.uk/careers



COULD THIS BE YOUR CALLING?

Bedfordshire Fire and Rescue Service is recruiting on-call firefighters near you.

Do you live or work near Toddington, Kempston, Pottton, Ampthill, Harrold, Shefford or Woburn? Ever wondered what it's like to help neighbours in times of need?

This summer, Bedfordshire Fire and Rescue Service invites residents to consider becoming an on-call firefighter — a rewarding, flexible way to serve your community while balancing everyday life.

On-call firefighters are everyday people — parents, shift workers, freelancers, tradespeople and professionals — who respond to emergencies when needed. Whether attending a fire, a road traffic collision or flooding, this is your chance to make a difference without changing your whole life.

“You can be more than one thing,” says Stuart Auger, Head of Response. “We’re looking for committed, enthusiastic individuals from all walks of life. This role fits around your job, family and lifestyle — and delivers extraordinary impact.”

At Toddington, Tom juggles full-time work, parenthood, and being on-call. He said: “The job can be demanding and you sometimes miss out on social events, but it's incredibly rewarding. For me, I love doing it, and that's what keeps me going. You have to be committed, but it's worth it.”

In Ampthill, Abi balances working in a local florist with her on-call duties. “Being an on-call firefighter is a juggling act—managing work, training, and personal life—but it's worth it. Being part of a great team and helping the community we love makes it the best thing I've ever done.”

We're predominantly looking for cover during afternoons and early evenings at our stations in Toddington, Kempston, Pottton, Ampthill, Harrold, Shefford and Woburn.

You'll need:

- ✓ To live/work within 6 minutes of a station (8 minutes for Woburn)
- ✓ To be 18+, fit, and hold a full UK driving licence

Learn more:

www.bedsfire.gov.uk/careers/oncall

ARE YOU READY?



All Saints Church Chalgrave



Hello from All Saints Church, Chalgrave.

Our beautiful church looks lovely in the sunshine and our churchyard is being well maintained by our hard-working team. We are blessed to have this wonderful space to worship in!

Throughout August and September our services remain as follows;

9.30am Holy Communion Every Sunday

There will be no Pop-up tearoom in August but we will be back Wednesday 24th September 11am-1pm. There after every 4th Wednesday of the month.

All are welcome to come and enjoy our homemade soup, quiche, cakes, tea, coffee and good company.

Held in Chalgrave Memorial Hall , Tebworth. Church and community working together.

Dates for your diaries:

Harvest weekend.

Saturday 13th September 12PM-3PM Church Open Day.

We would like to invite you to bring your picnic to have in our grounds.

Tea and Coffee will be provided. Food bank donations welcome.

Sunday 14th September 9.30AM Harvest Service and Holy Communion with Bishop Richard.

Christmas Craft Fayre Saturday 8th November 11AM-4PM.

At Chalgrave Memorial Hall, Tebworth.

If you would like a table to sell your craft, please contact Alison on 07771897451 for more details.

We are a small but friendly group at All Saints Chalgrave and we would love to have you come and join us for the church services, meetings and other activities. If you require information about Weddings, funerals, christenings or you would like prayers please contact Sandy on 01525 874748.

An update from your local Member of Parliament

BLAKE STEPHENSON MP



When I was elected as your Member of Parliament in July, I promised to be an open and accessible local representative, and since then I've been working hard to earn your trust.

We're now a year on from the General Election, and I have my constituency office based in nearby Silsoe with a fantastic constituency-based team. I know trust in politicians is low so getting out into Mid Beds and meeting people has been a priority for me. I've been holding regular advice surgeries and drop-in sessions since then, as well as visiting lots of local businesses and organisations to understand the issues affecting people and our communities. I've then been raising those issues in Parliament, including the reliability of rail services, planning laws and infrastructure, the impact of the recent flooding in September and of course, pushing for better access to healthcare.

It was fantastic to attend Toddington's village fete and present prizes for the cake competitions, as well as being able to catch up with the many wonderful local organisations. Thank you to everyone involved for organising another great annual event for the local community.

Constituency Surgeries

If you would like to book an appointment at one of my regular advice surgeries please do get in touch by email or by writing to Blake Stephenson MP, House of Commons, London, SW1A 0AA. .



Get in touch

Email: blake.stephenson.mp@parliament.uk

Phone: 020 7219 7477

Facebook: facebook.com/BlakeMidBeds

Twitter: [@Blake_MidBeds](https://twitter.com/Blake_MidBeds)

Website: blakestephenson.uk

*Sign up for
my e-newsletter*





Royal British Legion.



MEMBERSHIP HOTLINE 08088028080

www.britishlegion.org.uk/get-involved/membership/become-a-member

The Toddington Branch of The Royal British Legion would like to welcome new members to our branch. You do not need to have served in any of the armed forces to be a member of The Royal British Legion.

The Toddington Branch was formed in 1939 at the outset of WWII by the women of the village to look after the children of servicemen who were away fighting for their country.

Membership is open to everyone. If you have an interest in the objectives of the Legion and want to help and support those who have served and their families, come and join us. We welcome men and women of all ages, whether they have served in the Armed Forces or not, Please call 07771 774518 or email: toddington.chair@rbl.community

We meet every 3rd Tuesday of the month except August and January in the top bar of the Toddington Sports & Social Club at 7:30pm

Future Events – Memorable Dates

15th August (Friday) – VJ Day Commemoration

25th October (Saturday) – RBL Coffee Morning

9th November (Sunday) – Remembrance Sunday

11th November (Tuesday) – Armistice Day

Toddington Music Society
presents a

Concert

by

Finalists from

Young Musician of the Year Competitions

Tong Sim (Violin)
Tao Sim (Violin & 'Cello)
Finn Bantock ('Cello)
Jude Kayakiran (Piano)

Sunday 7th September 2025
2.30pm

Toddington Village Hall

Admission by programme at the door
Adults £10 Children £1 (Cash)

Please come along and support these talented young people

H

Up to £15,000*
deposit contribution!

— HAYFIELD GARDENS, TODDINGTON —



Reserve one of our beautiful 3 bedroom homes at Hayfield Gardens
and take advantage of up to £15,000 towards your deposit!

SHOW HOME OPEN DAILY 10^{AM}-5^{PM}

Visit hayfieldhomes.co.uk to find out more

HAYFIELD

*T&Cs Apply

Toddington Wills

Your Local Will Writing Service

We offer a no obligation free home visit or a remote service depending on your preference.

We can give advice / recommendations on:

- Wills
- Estate Planning
- Trusts
- Lasting Powers of Attorney (Health and Property)
- Living Wills
- Inheritance Tax Planning.

Our Unique Guarantee

If you are not happy with the service provided, we will waive our fee.

But if you are happy, we ask that you tell your family and friends about our service.



*For more information call Steve on 07703 341003
or email steve@toddingtonwills.co.uk*

Toddington Wills is a trading style of Legacy Wills UK Ltd

A member of the Society of Will Writers

Some thoughts on Barbeques

Barbeques/Braais used to be a large part of my life but that was long ago and far away, however it is a lovely way to cater for family and friends, relaxed (with luck and preparation) and informal.

In those days and at that time the men did the cooking, beer in hand, "giving the wife a rest", so all she had to do was make two or three salads, two or three desserts, prepare the meat and marinade it, perhaps pre-cook the chicken, sort out cutlery, plates, glasses, ice and soft drinks. But maybe things are different now, I hope so!!

I have been given, and tested, an excellent marinade recipe.

Ingredients:

- 100 g dark muscovado sugar,
- 175 ml bourbon (or spirit of your choice, I used whiskey using the tail end of two bottles),
- 30ml soy sauce
- 30ml English mustard (I used 2 teaspoons mustard powder)
- 30ml tomato ketchup.

Instructions:

- Mix it all up and boil for a few minutes until thickish and a bit sticky.
- I marinated a kilo of pork steaks in the fridge for a day or so then cooked them over charcoal. They were delicious hot and again very good cold and thinly sliced the next day.
- Do be patient and wait until the coals are no longer burning or everything will burn on the outside and be raw inside, one reason it is good to pre-cook chicken joints with a last blast on the coals.
- Don't forget the veg! Skewers of peppers, courgettes, tomatoes and mushrooms are good as are corn cobs cooked at the end directly over the coals.
- And what about trying fish, fresh mackerel are stunning cooked like this, especially if you have been out all day catching them!

But you all know all this and all I can do is to wish good weather and good cooking.

Toddington St George School - Sensory Garden

Back at the start of 2025, Toddington St George School was lucky enough to secure a grant from the local Rotary Club to create a Sensory Garden within our Ducklings Nursery Provision. After searching for a local building firm to support us with this, we found A-Star Builders.

From start to finish, the team made sure the children of TSG were firmly at the heart of the project and the fine details were put into action. Our barked walkway areas minimise noise, the height of the planters allows children of all ages access, to either sit or stand, to dig and plant, and the sensory kitchen encourages children to explore using all their senses.



Telephone: 07933 389761

Email: Hello@astarbuildingandlandscapes.co.uk

Website: www.astarbuildingandlandscapes.co.uk

We are without doubt, incredibly grateful to both the Rotary club and A-Star, for supporting us to create this wonderful space for our children.

However, this isn't where the story ends, work began in the Easter holidays. We received photographs from the builder, which we could just not believe.

A-Star had always promised to begin our pond clearance



journey with us, but nothing could have prepared us for what they actually achieved.

Not only do we have our

pond back, but we have a

clear walkway around the whole site, flowers and plants to attract wildlife, and we have pond dipping nets to allow children to investigate pond life.

All of which was donated free of charge by A-Star builders.



All of this work has increased our outdoor curriculum experiences even further. We have observed the life-cycle of a frog first hand, gone mini-beast hunting, and used our new signs to find out more information about the creatures and plants we have found. It would be remiss of me not to



acknowledge all the

work undertaken by the

Nursery Team, and Mrs Lisa Smith in particular, whose passion for this project helped bring this to life.

From all of us at TSG, thank you once again, to A-Star Builders, and particularly the Rotary Club for the generous donation to make this project possible.

Mr Darlington.

Toddington St George School



ROTARY sponsored Sensory Garden Project Opened at St George's Cof E school



The school's Sustainability Lead, Nicola Crellin, (who took this photo) was very excited to share news of their newly refurbished pond and wildlife area with other schools and the local authorities via their ECO bulletin which has been sent to all schools in Bedfordshire.

Funding for the project was supplied entirely by the Rotary club of Dunstable Downs and was completed by contractors A Star during the school's Easter break.

The above photo shows Rotary Club President Patrick Boys and club Publicity representative Tony Gomersal, together with nursery teachers Lisa Smith centre and Emma French on right with the Commemorative Plaque which was later mounted on an adjacent wall.



The Plaque Commemorating the Rotary Funded Sensory Garden Project completion.



Patrick & Zen with Emma and with Tony G

Proud to be Parkfields

Take a moment to enjoy just a few examples of the incredible creativity happening every day at Parkfields.

This artwork is the result of imagination, skill, and lots of proud moments in the making.

We're looking forward to celebrating even more of our pupils' brilliant work in the next issue!



Anya H



Hannah D



Lois O



Ollie K



Parkfields School

FLOURISH, LEARN AND GROW

TODDINGTON COMMUNITY GARDEN

We recently celebrated the garden's tenth birthday with a Garden Party. We had a lovely time. The garden was open to explore, there was much tea and cake, games and activities for the young and young at heart and some rousing performances from Toddington Musicmakers. We are really grateful for their support, that of our visitors and of all our volunteers who turned out to make this event a success.

It hardly seems possible that it is ten years since we made the decision to turn the Methodist Church rear parking area into a garden. The once neglected and untidy patch of earth has been transformed beyond recognition. Once again, the herb garden is looking beautiful and attracting lots of bees and other insects.

The very hot weather has been challenging when trying to keep

our young plants watered, but we have risen to the challenge by applying water directly to the roots of leafy plants from plastic bottles filled with water, their lids perforated and planted upside down beside the plant. This is the appliance of science! The water only flows from the bottle as the temperature rises and the gas inside the bottle expands and pushes the water out. An unfortunate side effect is that it does look like we are trying to grow bottles!

We continue to work hard in the garden and enjoy welcoming groups like Toddington Childcare and the Brownies and Rainbows to the garden. Everyone is always welcome in the garden, at any time but none more so than willing volunteers – so if you fancy getting involved pop down on a Wednesday morning from 0945.



PUZZLES

Sudoku #1383 (Hard)

				9			1
			4			5	9
					6	8	
7		5			4		
				1			5
	3	1			7		
2	8		3				
3		9			6		
			8	4			6

Sudoku #1383 (Easy)

		9	5				
		7				3	1
	1			6		2	
				2			
	7			9	3		
9		4					
4		3	8		6		9
							1
5				3		6	

Each puzzle is divided into 8 different regions.

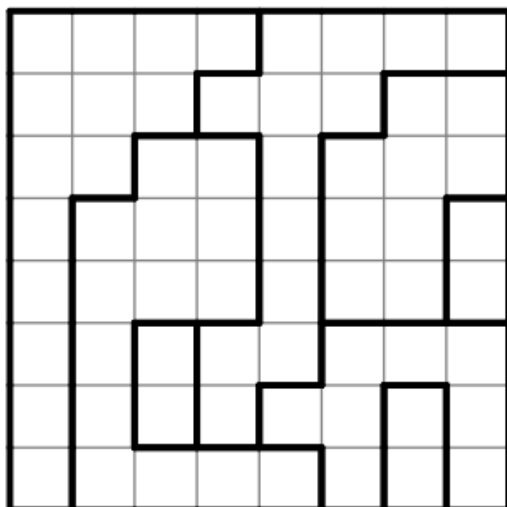
Each region, row and column contains a single star.

The stars may not be adjacent to each other (not even diagonally).

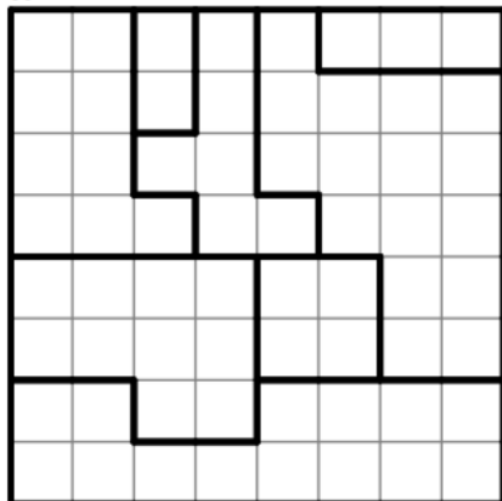
STAR BATTLE

Solution On Page 38

#2



#1



Solution can be found here with the #ref
number <https://www.puzzles.ca/sudoku37>

CHALGRAVE MEMORIAL HALL

TEBWORTH LU7 9QQ

POP UP TEA ROOM

2025 DATES FOR YOUR DIARY
EVERY 4TH WEDNESDAY 11AM-1PM

JANUARY 22ND

FEBRUARY 26TH

MARCH 26TH

APRIL 23RD

MAY 28TH

JUNE 25TH

JULY 23RD

AUGUST BREAK

SEPTEMBER 24TH

OCTOBER 22ND

NOVEMBER 26TH

DECEMBER 10TH

CHALGRAVE CHURCH AND CHALGRAVE MEMORIAL HALL:
WORKING TOGETHER FOR THE COMMUNITY



A POSTCARD FROM THE DANUBE



Our trip actually began in Amsterdam and we travelled along parts of the rivers Rhine and Main before finally getting onto the Danube. How many countries can you visit in a fortnight?? We managed The Netherlands, Germany, Austria, Hungary with day trips to the Czech Republic and Slovakia. We explored canals in Amsterdam, medieval towns, grand cities and picturesque vineyards along the way. A classical Concert in the Beethoven room at La Rodoute in Cologne was a highlight as was the concert in Vienna. World heritage site at Cesky Krumlov was amazing but the dumplings we were served for lunch would certainly 'line the stomach'!!

Nuremberg, Passau, Wurzburg, Bamberg, Krems, Vienna all hold wonderful memories as we sailed through ending in the magnificent city of Budapest where we were taken in the evening along the river through the city, a truly magical sight.

Next trip – Budapest to Bucharest. Watch this space!!



Busy Bee's Perfect Dive



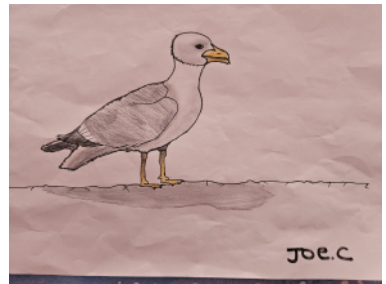
Busy bee, busy bee looks out of his hive.
Busy bee, busy bee leaps and takes a dive.
Busy bee, busy bee sees a pretty flower.
Busy bee, busy bee takes a pollen shower.
Busy bee, busy bee has a full sack.
Busy bee, busy bee chucks it over his back.
Busy bee, busy bee flies back home.
Busy bee, busy bee makes honeycomb.

Board book available at
www.rhymingmoments.co.uk

By Children's Book
Author
Trudy Davidson



Congratulations to Joe. C for his winning drawing of Rodney Seagull from our last issue.





TODDINGTON BEAVER SCOUTS

Toddington Beavers continues to go from strength to strength - recently investing 12 new Beavers. As part of the scouting family, they are committed to teaching young people skills with fun experiences and are a core part of the local community.

Contact: Gsl@toddingtonscoutgroup.com

TODDINGTON SCOUT GROUP

ANNUAL BALL

**SATURDAY, 11TH
OCTOBER 2025**

6:30PM - MIDNIGHT

FIZZ & CANAPES **AUCTION & RAFFLE**

DINNER **CROSS KEYS, PULLOX HILL** **DJ**

£50PP

Transport available to venue at an extra cost.

Contact Karen -07736 147902 or
gsl@toddingtonscoutgroup.org

SF Babysitters



Babysitting service for weddings, special occasions, daytime and evenings out.

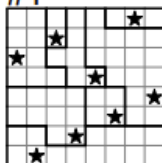
☎ 0797 952 1900

✉ sandy@sfbabysitters.co.uk

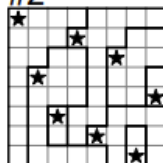
🌐 www.sfbabysitters.co.uk

Star Battle Solution

#1



#2



Come along to...



toddington tots

TUESDAY'S
9:30AM-11AM
(term time)



at Toddington
Village Hall



ACTIVITIES

- * Craft
- * Sensory play
- * Music & Songs
- * Baby Area
- * Bubbles
- * Snacks

£3 per child
(+ £1 for every
extra child / adult)

Contact Rebecca : 07784342128
Email : Toddingtontots@gmail.com
Toddington Village Hall, Leighton Road, LU5 6AN

No need to book ahead, just
come along!



Find us on
Facebook





Stanton Low Park

Milton Keynes, MK14 6FN

Travel time from Toddington: around 30 mins

Cost: Free to visit/park

A large play area with a zip wire, climbing frame, and range of play equipment. Plus a pump track for riding bikes/scooters, and scenic walks.

Oasis Beach Pool

Bedford, MK42 0BZ

Travel time from Toddington: around 25mins

Cost: £7.85 per child and £9.10 per adult.

This pool has 2 flume slides, a lazy river, toddler slide, various jets, and a wave machine. The coolest pool we have been to locally!



Lane 7

Milton Keynes, MK9 3GA

Travel time from Toddington: around 30 mins

Cost: From £7.50 depending on activity

Various activities including roller skating, bowling, darts, shuffleboard, arcade, bumper cars, pool, karaoke, golf simulator, ping pong. Plus playground which is a set of games projected on the floor which you play by moving around.



@mumday_funday

Mumday Funday

mumdayfunday.wordpress.com



Mumday Funday

Things to do in Herts, Beds, Bucks, and beyond

Happy Summer! Here are some of our latest discoveries and old favourites to inspire your summer holidays. As always, you can find plenty more ideas on my socials!

Stanborough Park

Welwyn, AL8 6DF

Travel time from Toddington: around 35mins

Cost: £10 parking for the day

Pirate ship play area, splash park, places to paddle in the river, and nice walks around the lake. You can buy duck food, rent pedalos, and there are other watersports there too.



Poplars Garden Centre

Toddington, LU5 6HE

Travel time from Toddington: 5 mins

Cost: Free/ cost of food or drink

Did you know that Poplars has a nature reserve that you can visit for free? It has a woodland, stream, and even a bird hide, you just need to collect a key from the information desk. Plus if you visit the restaurant there is a fab little play area with a sand pit, construction area, chalk board, and other garden games.



Toddington Library

Summer Reading Challenge 'The Story Garden'



It's finally here!! We have been so busy with lots of children joining up for our reading challenge and taking part in our **FREE** craft/activity sessions. Just drop by for guaranteed fun {you will need a library card, use this QR code to sign up}, you have until Sept 6th. Children can join the challenge any time during this period.



What's on? Every Tuesday we have the Walk4Health group that meet on the village green {outside the library} at 10:15am. This is a casual 1 hour walk for the over 55's. The group then return to the library for a cup of tea and biscuits. The library also has a great selection of leaflets showing local walks, ask a member of staff and we will be help

Opening Hours

Sun/Mon: Closed

Tues: 9am-1pm

Wed: 2-6pm

Thurs: 9am-1pm

Fri: 9am-1pm/2-6pm

Coffee Mornings

Sat 16th August 10am-12noon

Sat 20th Sept 10am-12noon



40 Sat: 9am-4pm

ENROL NOW

pilates & stretch class with lauren



Lauren's popular classes are suitable for all abilities. They improve strength, posture, balance & flexibility and help with relaxation and mental wellbeing!!

Every **Tuesday morning** from 9.30 -10.30am and
Friday morning from 9.00 -10.00am at Todington
Methodist Church Hall

Every **Thursday evening** from 6.30 -7.30pm at
Todington St George CofE School **only £9.00 a class**
(£7.50 when block booked)

Call Lauren for more information or to
book your place: 07772 424153 or
email: lauren@ignitedanceandfitness.co.uk



PILATES

IGNITE DANCE & FITNESS • www.ignitedanceandfitness.co.uk



CMW
HEATING AND COOLING



New Boilers Fitted from £1800 ex.VAT
5-12 Year Warranty
Free Quotations



BAXI

ideal

Vaillant

POTTERTON

VIESSMANN



Ideal, Vaillant and Worcester-Bosch Accredited

Gas, LPG, Oil and Hvac

- Boiler Breakdowns, Installations and Servicing
- Unvented Hot Water Systems
- Power-flushing
- Central Heating Repair / Maintenance
- Under Floor Heating
- Air Conditioning Installation, Service and Repair
- Air Source Heat Pump Installation, Service and Repair

Local Family Run Business

Contact Chris: 07706 077132 / CMWGAS.COM



StotenGillam
chartered accountants
chartered tax advisers

Providing an outstanding professional, cost effective and friendly service to our business and personal clients.

OUR SERVICES

Taxation



Pay the minimum tax

Compliance



Business administration

Support



Grow your business

Start-ups



Your business a reality

Get to know you



Consultancy & advice



☎ 01582 608601 ✉ enquiries@stotengillam.co.uk
www.stotengillam.co.uk

Alban House, 99 High Street South, Dunstable, LU6 3SF



TODDINGTON EYECARE

At Toddington Eyecare, we take pride in our status as an independent eye care practice, boasting over two decades of collective experience in Optometry, Ophthalmology, and Optical Dispensing. Our commitment to excellence ensures that you receive the highest standard of care right in your community.

Discover our comprehensive range of services:

- Eye Examinations
- OCT Ocular Health Scan
- Optomap Wide-Field Retinal Imaging
- Refractive Surgery Consultations
- Pre and Post Cataract Surgery Care
- Glaucoma and Ocular Hypertension Screening
- Acute and Emergency Eyecare
- Spectacles Dispensing
- Contact Lens Assessments and Supply

Contact us via our website, telephone, email or simply visit us at 18 High Street, Toddington, LU5 6BY

01525 875099

info@toddingtoneyecare.com
www.toddingtoneyecare.com

Nathan Squire Plastering

Over 30 years experience

45 Randall drive
Toddington
LU5 6FE

07368 222982
Nathansquire@live.co.uk

TREVOR HORN WINDOW & DOOR REPAIRS

- Window Repairs
- Replace Misted Glass
- General Door Repairs
- Fix or Replace Hinges
- Replace or Adjust Locks

CALL FOR A FREE QUOTE!

07908 464 618

TRUSTED LOCAL EXPERT
SERVING BEDFORDSHIRE



REPAIR, DONT REPLACE!

ESTABLISHED 20 YEARS

DLS ELITE TRAVEL CHAUFFEUR SERVICE

CENTRAL BEDFORDSHIRE
MERCEDES 'E' CLASS SALOON

Airport Transfers - Business Travel
Concerts & Sporting Events - A to B Transfers

www.dlselitetravel.com

01525 872666

07464 617706



VISA IN CAR PAYMENT SYSTEM

Laptop & Computer

Printer, Apple Mac, Setup, Repairs Virus infection, Internet, Mail setup Network, Data recovery. Home/Office computer problems 7days services from £40. Qualified & Experienced.

No Fix – No Fee, Your local IT support.

We come to you

PcLaprepairs@gmail.com

01525 306316 - 07925 338435

Austin & Carnley Solicitors



Make legacy plans today to
protect your loved ones
tomorrow

Based in Leighton Buzzard, we offer
expert Private Client services
including Wills, Trusts, LPAs and
probate. With every new instruction
helping to plant a tree as part of our
commitment to a greener future.

Whatever your stage of life, our friendly team is here to
help you plan with purpose.

Your lawyers for life®

01525 372140

office@austinandcarnley.co.uk

www.austinandcarnley.co.uk



Auction Sales & Valuations

Valuation, collection and auction service of individual items through to complete property and commercial clearances.

Call for a free no obligation quote or email
info@peacockauction.co.uk

SALE ENTRIES NOW INVITED

Antique & Modern Furniture • Clocks • Books • Ceramics & Glassware • Pictures & Prints • Bicycles
Jewellery & Watches • Collectables • Garage Tools & Equipment • Household Electrical Items • Office
Furniture & Equipment • Retail Products & Stock • Vehicles • Horticultural & Commercial Equipment
Building Materials • Garden Furniture & Effects

www.peacockauction.co.uk



W&H PEACOCK
AUCTIONEERS & VALUERS
01234 266366



Eastcotts Park,
Wallis Way,
Bedford,
MK42 0PE

- Washing Machines - Dryers - Dishwashers - Electric Ovens -

Repairs, Servicing & Sales

A local family business offering
a quality service at a competitive price

Est. 1981



Tel: 01525 860148



**or Tim Downing direct on
07969 545 276**

A Member of the White Goods Trade Association
Fully Insured

BLUEBELL LANDSCAPES

**OVER 25 YEARS EXPERIENCE OF
LANDSCAPING AND GARDEN
DESIGN RHS BTECH**

- Patios
- Sleeper Work
- Pergolas
- Border Design
- Brickwork
- Turfing
- Fencing
- Pruning

**Low Maintenance Gardens
Free estimates
Fully Insured**

**Tel: 01525 794434
Mob: 07752 159184**



TODDINGTON

INDEPENDENT FINANCIAL ADVICE



Institute of
Professional
Willwriters

PROFESSIONAL • ETHICAL • COMPETENT

DO YOU NEED FINANCIAL ADVICE?

We can help you to review your current or proposed,

Mortgages, Insurances, Pensions & Investments, Equity Release, Inheritance Tax, Wills and Trusts, or a general review of your current position?

'As a mortgage is secured against your home, it may be repossessed if you do not keep up the mortgage repayments. The financial conduct authority does not regulate tax and estate planning or will planning'

Unlike some TV adverts we don't charge a fee for equity release, so no broker fees added to your loan! 'Equity released from your home will be secured against it'

LOCAL OFFICE: Toddington

Contact: Philip Hadlow

Tel/Fax: 01525 874100

Mobile 07768 277 532

info@toddingtonifa.co.uk

www.toddingtonifa.co.uk

Free Will with Investments & Pensions placed through us of over £50,000 and within 6 months of investment

Talk to us for a free initial consultation

Toddington Independent Financial Advice Ltd is authorised and regulated by the Financial Conduct Authority.

Registered office: The Stables, Griffin Farm, Conger Lane, Toddington, Bedfordshire, LU5 6BT

Registration Number: 760687 Company Number: 9931606



IRONING | LAUNDRY | ALTERATIONS | REPAIRS

CLEANING SERVICES

- ✓ Dry Cleaning
- ✓ Leather & Suede Cleaning
- ✓ Ironing Service
- ✓ Wedding Dress
- ✓ Duvet, Bedding & Mattress toppers
- ✓ Curtains ✓ Laundry Service

CONTACT US

01525 875980

07459 906412

Monday to Friday: 9am - 6pm

Saturday: 9am - 5pm

2 Lincoln Way, Harlington, LU5 6NA



SCAN TO CALL

YOUR LOCAL DRY CLEANERS & CLOTHING SPECIALISTS



REPAIR SERVICES

- ✓ Garment Repair ✓ Alteration
- ✓ Curtain Lining Changes
- ✓ Cushion cover dry clean ✓ Sofa Cover



**FREE
PICKUP &
DELIVERY**



TADS Theatre Group
SUMMER SCHOOL
 11th-15th or 18th-22nd August 2025

AGES 6-17

TADS THEATRE
 CONGER LANE
 TODDINGTON
 LU5 6BT

- SINGING
- ACTING
- DANCING
- PERFORMANCE SKILLS
- FULL SHOW ON THE FRIDAY!

10am-4pm
(1pm-6pm Friday)

REGISTER HERE:
chairman@tadstheatre.org

£150 FOR THE WEEK.
£120 PER ADDITIONAL SIBLINGS
 (3 TICKETS INCLUDED PER CHILD)

FLEXIBLE PAYMENT PLAN AVAILABLE





Charlotte's Soapy Pups
Dog Groomers

32 High Street, Toddington, LU5 6BY
 Charlotte White : Qualified Pet Groomer

*Pop in and say hello !!
 Call or What's app me, to book an appointment.*

 charlottessoapypups@gmail.com

 **07368909066**



Toddington Fisheries
 Park Road, Toddington, Beds, LU5 6HH
 Open daily from 6am
 Contact Tina: 07896 788 957 for
 any questions or
 email: Lydonj6@aol.com



Rainbows
 Toddington Guiding

Girls play, learn and have tons of fun
 for ages 5 to 7

Mondays, 5.00 - 5.45

At Rainbows, we welcome all girls to play, learn and have fun in a creative, safe space for all abilities.


 Registered charity number: Exempt from registration

Join a local Rainbows group girlguiding.org.uk/joinus

'We play loads of fun games, do activities and challenges and sometimes get badges'
 Matilda

The below lists dates and events planned during the year, for further information please contact the relevant organiser. Contact details can be found on page 48-49, Toddington Village Contacts

Weekly events and activities

Day	Event Name	Time	Location
Monday	Bible study group	2:00pm – 3:30pm	Methodist Wesley Hall
Monday	Children's Dance	3:30pm – 7:30pm	St George's School
Monday	Rockabye Baby: Baby & u5's	10:00am – 11:00am	Toddington Baptist Church
Monday	Rainbows	5:00pm – 5:45pm	Guide Building
Monday	Brownies	6:00pm – 7:30pm	Guide Building
Monday	Beavers	6:30pm – 7:30pm	Scout Hut
Monday	Carpet Bowling club	7:00pm – 9:00pm	Village Hall
Tuesday	Toddington Tots: Baby & u5's	9:30am – 11:00am	Village Hall
Tuesday	Pilates & Stretch	9:30am – 10.30am	Methodist Wesley Hall
Tuesday	Knitting group	10:30am	Wilkinson Hall
Tuesday	Cubs	6:15pm – 7:45pm	Scout Hut
Wednesday	Community Garden	10:00am – 11:30am	Methodist Wesley Hall
Wednesday	Hurly Burly: Baby & u5's	9:00am – 11:00am	Toddington Baptist Church
Wednesday	Wednesday Art Group	10:00am – 12:00pm	Methodist Wesley Hall
Wednesday	Carpet Bowls Club	2:00pm – 5:00pm	Village Hall
Thursday	Children's Dance	3.30pm – 6.00pm	St George's School
Thursday	Pilates & Stretch	6:30pm – 7:30pm	St George's School
Thursday	Toddington Singing Café	10:30am – 11:45am	Village Hall
Friday	Pilates & Stretch	9:00am – 10:00am	Methodist Wesley Hall
Friday	Painting for pleasure	10:30am	Wilkinson Hall
Friday	Community Garden	2:00pm – 4:00pm	Methodist Wesley Hall
Friday	Toddington Music Makers	6:30pm – 7:30pm	Methodist Wesley Hall
Friday	Scouts	7:00pm – 8:30pm	Scout Hut
Saturday	Community Fridge	9:30am – 11:00am	Wilkinson Hall

Monthly events and activities

Day	Event Name	Time	Location
1 st Sunday	Muddy Church	10:00am	Methodist Wesley Hall
2 nd Sunday	Creative Space	2:00pm - 3.30pm	Methodist Wesley Hall
3 rd Monday	U3A Open Meeting	2.00pm	Village Hall
2 nd Tuesday	Guild & Games	2:00pm - 3.30pm	Methodist Wesley Hall
1 st Wednesday	Pudding Club	7:00pm	Methodist Wesley Hall
1 st Thursday	Ploughman's Lunch	12:00pm	Wilkinson Hall
2 nd Thursday	Time with Friends	2:00pm	Wilkinson Hall
3 rd Thursday	St George's Fellowship	2:00pm	Wilkinson Hall
4 th Friday	Messy Church	3:30pm	Wilkinson Hall
1 st Saturday	Coffee Morning	10:30 – 12:00am	Methodist Wesley Hall
2 nd Saturday	Coffee Morning	10:00am	Wilkinson Hall

August & September Events

Date	Event Name	Details	Location
Sunday 3 rd August	Hymns & Pimms – 6:00pm – See page 14		St George Church
Friday 15 th August	VJ Day Commemoration and Beacon Lighting at Dusk.		Village Green
Sunday 7 th September	Young Musician of the Year – 2:30pm – See page 2		Village Hall
Friday 19 th September	Beetle Drive – 2:30pm – See page 2		Wilkinson Hall

Toddington Village Contacts

HEALTH CONTACTS		Defibrillator Locations
Bedford Hospital	01234 355122	Toddington Library, Market Square LU5 6BP - On the wall outside
Doctor's surgery	01525 872222	Toddington Social & Services Club - On the wall outside to the left
Dentist	01525 577066	Parkfields Middle school - Left of front entrance
Luton and Dunstable Hospital	01582 491166	Unit 5 Crowbush Farm, Luton Road, Toddington, LU5 6HU
Opticians Toddington Eyecare	01525 875099	Life Threatening Medical Emergency: 999 Non life-threatening medical need: 111
Osteopath	01525 875474	
Pharmacy Tuda	01525 872093	

UTILITIES

Gas emergency		0800 11199
Electricity emergency	Ring 105 to be put through to your local network operator	105
Police Station Luton		01582 401212

ADMINISTRATIVE & SOCIAL SUPPORT SERVICES

Bedfordshire age UK	https://www.ageuk.org.uk/bedfordshire	01234 360510
Beds domestic abuse partnership	https://bedsdv.org.uk	
Citizens Advice Dunstable	https://www.dunstablecab.org.uk	01582 670003
Citizens Advice Consumer service	Trading Standards advise	03454 04 05 06
Mental health Beds open door young people	01234360388 /	07922105200
Post Office at Nisa		0345722344
Police	non-serious crimes anti-social behave or anonymously via Crime stoppers	101 / 0800 555 111
Scams	report scams or suspected scams to Action Fraud	0300 123 2040
Toddington Library		03003008069

CHURCHES

All Saints Chalgrave	Sandy Ryan	01525 874748 / 07989645040
Friends of St George's Church	f.brown950@btinternet.com	01525 872501
St George's Toddington Church	Dee Curtis	01525 872649
St George's Church Bellringers	Peter Boon	01908 584181
Toddington Methodist Church	Rev Seung Jeung	01525 372289
Toddington Baptist Church	secretary@toddingtonbaptist.com	

Central Bedfordshire Council

Responsibilities: Potholes, Footpaths, Lighting, Trees, Pollution, Planning

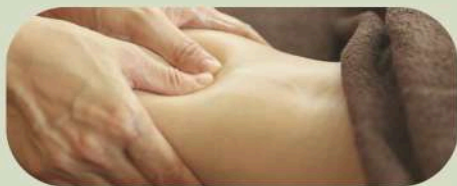
General Information	customers@centralbedfordshire.gov.uk	0300 3008301
Reporting Problems	www.centralbedfordshire.gov.uk/reportit - Smartphone App search: 'FixMyStreet' in app store	
Report emergency	Report an emergency, such as a street light with wires exposed	0300 300 8049
Pollution	pollution@centralbedfordshire.gov.uk	0300 300 8302
Planning	planning applications & enforcement issues	0300 300 8670
Unitary Ward Councillors:	Cllr Mary Walsh Cllr Gary Purser	mary.walsh@centralbedfordshire.gov.uk gary.purser@centralbedfordshire.gov.uk
Central Beds safeguarding		0300 300 8585 / 0300 300 8123
Bin Collection Information	https://tinyurl.com/Toddnews-Bins	

Toddington Parish Council, Other Village PC's & MP

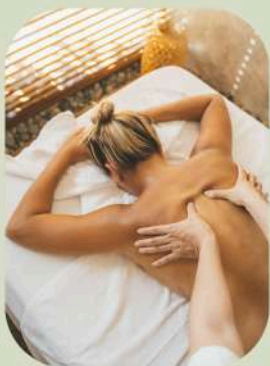
Responsibilities: Luton Road Recreational Ground, Russel Rd Play Park, Crowbush, The Glebe, Memorial Garden, Village Green, Cemetery, Allotments

Toddington Parish Council General Contact	info@toddingtonparishcouncil.gov.uk	01525 874312
Chalton Parish Council	clerk@chalton-pc.gov.uk	
Chalgrave Parish Council	phil@philparryassociates.co.uk	
Blake Stephenson	blake.stephenson.mp@parliament.uk	

SCHOOLS		
Chalton Lower School		01525 872354
Harlington Upper School		01525 755100
Parkfields Middle School	schooladmin@parkfieldsschool.co.uk	01525 872555
St George's Lower School	admin@toddstg.co.uk	01525 872360
Toddington Childcare	admin@toddingtongchildcare.org.uk	
SPORT AND EXERCISE		
Chalgrave Manor Golf Club		01525 876556
Indoor Carpet Bowls	Sue.bollins@ntlworld.com	07758 680406
Pilates Classes - Lauren Houghton	lauren@ignitedanceandfitness.co.uk	
Toddington Ramblers – Yvonne Bevan	yvonnebevan0806@gmail.com	
Table tennis group - Brian Roberts		01525 872295
Tennis Club – Geoff Betts	tennis_club@hotmail.com	
Toddington Rovers FC	secretary@toddingtonroversfc.co.uk	
Toddington Trotters Sunday run – Lisa		07787 503854
Toddington Walks and Rides	www.toddington.info	
Well-being walks – Walk for Health	Kathy Bocutt	07900694001
GROUPS FOR YOUNG PEOPLE		
Guiding – Melanie Parker	melanieparker62@outlook.com	01525 875844
Hurley Burley - Baby and under 5's	Doreen Maskell	07593 355971
Toddington Tots - Baby and under 5's –	facebook.com/toddingtontots - toddingtontots@gmail.com - Nicki	
Messy Church	Dee Curis	01525 872649
My Theatre Dance – Lauren Houghton	lauren@ignitedanceandfitness.co.uk	
Mumday Funday days out – Lauren Moss	laurenlouisemoss88@gmail.com	
Rock-a-bye-baby - Becky Boddey	becky@rockandredeemervineyard.com	07376 019437
Scouting – Karen Calder	gls@toddingtonscoutgroup.org - www.toddingtonscoutsonline.co.uk	
St George's Youth group	Dee Curis	01525 872649
HALLS		
Chalgrave Memorial Hall – Jane Spiers	chalgravememorialhall@gmail.com	07803378548
Guide building – Melanie Parker	melanieparker62@outlook.com	01525 875844
Methodist Wesley Hall		01525 873871
Social and Services Club	admin@toddingtonsocialclub.co.uk	
Village Hall	Avril Clark	01525 872571
Wilkinson Hall	Dee Curtis	01525 872649
OTHER GROUPS AND ACTIVITIES		
British Legion – John Wood	jpwood@btconnect.com	07771 774518
Chalgrave pop-up tearoom – Sandy Ryan	Sandra-ryan@sky.com	07989645040
Friday Lunch club	Rachel Wiliams	01525 872548
For Painting for Pleasure & St George's Fellowship & Tuesday Knitters	Dee Curis	01525 872649
Music Makers – Ruth Robinson	ruth.christine.robinson@gmail.com	
Open Door lunch club - Colin Maskell		01525 752463
Toddington Trefoil Guild	hornsbyjanet@btinternet.com	01525 875203
Social and services club	admin@toddingtonsocialclub.co.uk	
TADS theatre group – Michelle Standon	chairman@tadstheatre.org	
Toddington Music Society – Fran Brown	f.brown950@btinternet.com	01525 872501
Toddington Old Boys Assoc – Len Hull	LenHull@btinternet.com	
Todd Old Scholars – Janet Hornsby	hornsbyjanet@btinternet.com	
Todd singing café – Ruth Robinson	ruth.christine.robinson@gmail.com	
Toddington Town Band	Toddingtontownband@gmail.com - toddingtontownband.weebly.com	
Toddington Magazine	toddnews@outlook.com	
U3A – Sue Barrow	suej.barrow@outlook.com	07712 810671
Rotary Club of Dunstable Downs	tonygt@btinternet.com	01525 874393
Toddington Music Makers - Ruth Robinson	info@toddingtonmusicmakers.co.uk	01525 874326
Toddington Singing Café - Ruth Robinson	info@toddingtonsingingcafe.co.uk	01525 874326



Experience the Benefits of *Menopause Massage*



- ✦ Relieve hot flushes, insomnia & anxiety
- ✦ Ease muscle tension & joint discomfort
- ✦ Boost emotional well-being through deep relaxation

Appointments available in Toddington and Caddington
Limited spaces each week — gift vouchers available!

☎ Call Marie 0789 456 0484

@ bamboo_wellness_for_women



DO YOU NEED A TRUSTWORTHY ELECTRICIAN?

Murray's Electrical Ltd is an established family-run business covering Bedfordshire, Hertfordshire, Buckinghamshire, and London. Our electricians are experts in all domestic, commercial, and industrial sectors of the industry. Murray's Electrical is known for its workmanship, honesty, and professionalism.

DOMESTIC SERVICES:

- Rewires
- Extensions
- Kitchen refurbishments
- Summer Houses
- Home Offices
- EICR

COMMERCIAL SERVICES:

- Shop Fitting
- Office Install/Refurb/Maintenance
- School/College Maintenance (DBS checked)
- Warehouse Install/Refurb/Maintenance
- LED Lighting Upgrades
- Plant Rooms
- EICR

Contact us via 07943835220 or murrayelec54@gmail.com
FOR YOUR FREE NO OBLIGATION QUOTE.





Laser & Skin Therapy

Established in Toddington for over 13 years, we specialise in skin and body treatments using award-winning, state-of-the-art technologies.

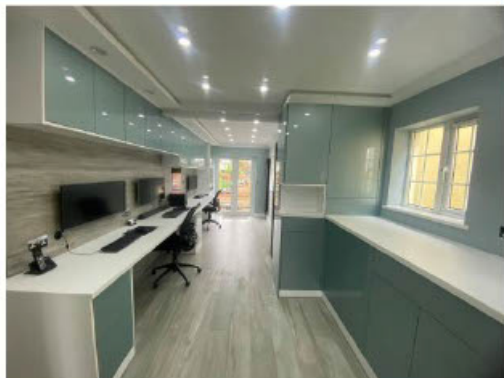
- Hair removal
 - Tattoo removal
 - Red vein removal
 - Rosacea treatments
 - Pigmentation removal
 - Specialist, luxury facials
 - Microneedling
 - Dermalux LED
 - Mole screening
 - CryoPen skin tag, wart, verruca, lesion removal
 - Microsuction ear wax removal with Jackie
-



01525 872547

www.toddingtonlaserclinic.co.uk
1st Floor, 42 Market Square

We will help you reveal your home's potential in ways you never dreamed possible.



Our process is collaborative from design to build

A one-stop-shop incorporating all trades from our friendly team.

Save money by improving rather than moving.

Complete Bespoke Furniture Making Service
ArtiCAD® Design and Planning

Kitchens * Bathrooms * Bedrooms

Design * Supply * Install

Supply Only Also Available

Tel: 01525 633448 Mob: 07956 222299 info@claridgeinteriors.co.uk

www.claridgeinteriors.co.uk