



Robot Administered Prescriptions

Churnika Gudla Venkata Siva

Blueprint

1

What is one task you can map out for a robot?

One task I can map out for a robot is administering a prescription for patients.

2

What will be the input or starting point for the process map?

The input or starting point for the process map will be reviewing the patient's prescriptions.

3

What steps or decisions will the robot take to complete the task?

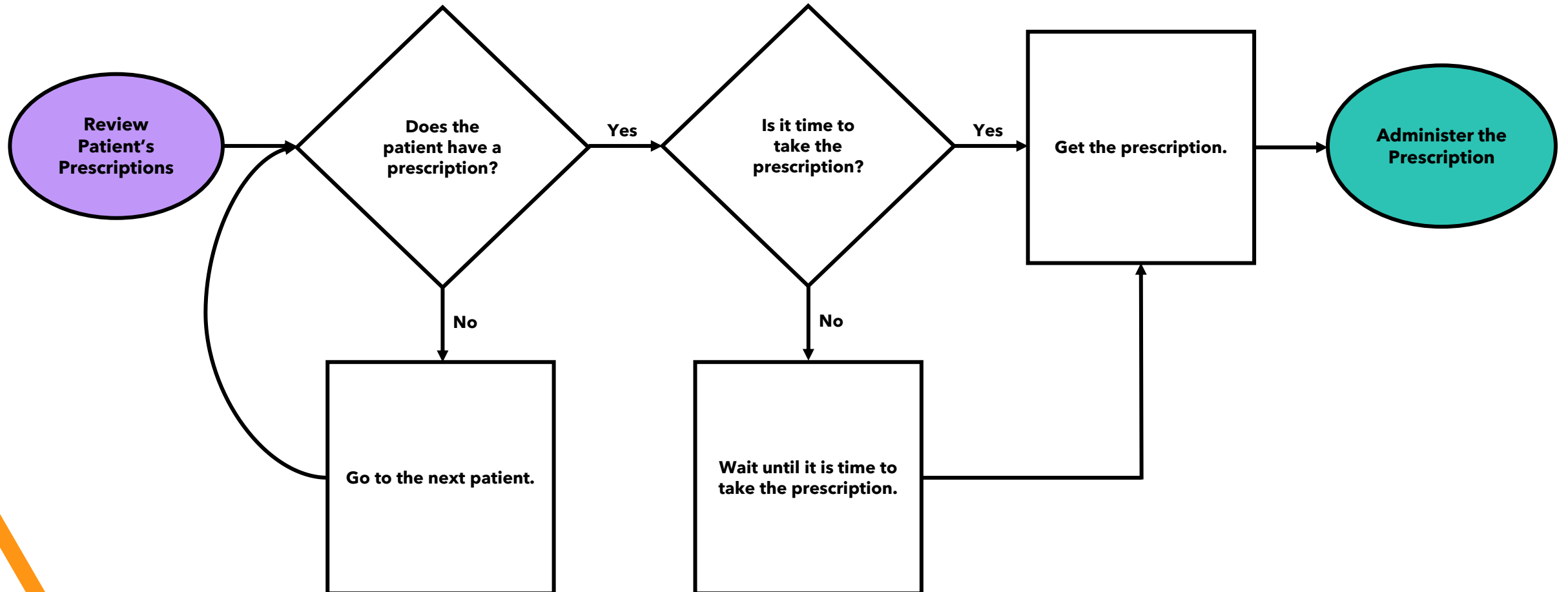
The steps or decisions the robot will take to complete the task are determining whether the patient has a prescription and if it is time to take the prescription.

4

What will be the output or ending point for the robot in your process map?

The output or ending point for the robot in your process map would be administering the prescription.

Original Model



Problems & Solutions

1

How can the robot recognize the medication on the shelf?

The robot needs to ensure that the name on the prescription matches the name on the medication bottle at a minimum.

2

How can the robot recognize the patient out of all the people in the hospital?

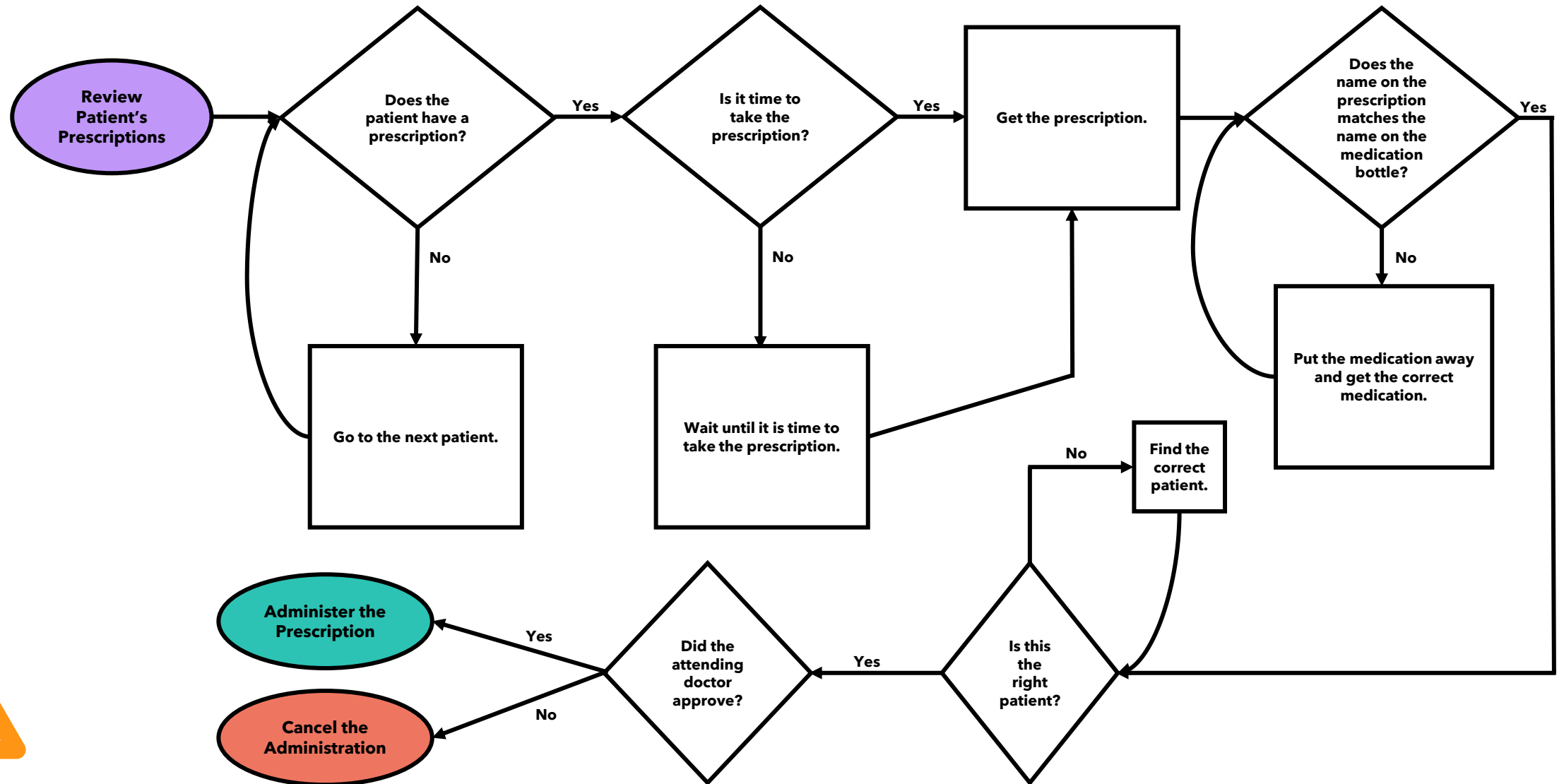
The robot must ask the person for their name. If their name matches the prescription, it can administer the medication.

3

Is there another checkpoint to ensure the robot got the right medication?

The robot could get confirmation with an attending doctor as this would make patients more comfortable.

Edited Model



Future Directions

1

What are some complications that could occur from this idea?

The prescription and medication bottle naming, could be inaccurate, however that would be considered human error.

What are some future questions that could arise from this idea?

Is a patient's name enough to verify their identity? What if the patient was unconscious so they could not confirm their name? How could the robot verify who is the correct patient?

Thank You

