

**SAMICO**

شركة الميماس السعودية المحدودة  
Saudi Mimas Company Ltd.

رؤية  
VISION  
2030  
المملكة العربية السعودية  
KINGDOM OF SAUDI ARABIA

# SAMICO Company



# Overview

**SAMICO** is a specialized engineering company based in Saudi Arabia, offering integrated solutions in **Mechanical, Electrical, and Plumbing (MEP)** works. With expertise spanning **construction, infrastructure, landscaping, water treatment, and smart city technologies**, we serve a wide range of sectors—from power plants and hospitals to commercial towers and residential communities.

Driven by precision, quality, and innovation, we deliver high-performance systems that meet the evolving needs of modern development. At SAMICO, we combine technical excellence with a commitment to long-term value, helping our clients build smarter, safer, and more sustainable environments.



# Our Vision

To be a trusted leader in integrated construction and infrastructure solutions, shaping smarter, greener, and more resilient cities for future generations.

# Our Mission

We deliver expert-driven, innovative solutions across construction, infrastructure, and technology sectors. Our mission is to exceed client expectations through quality execution, sustainability, and smart urban development—ensuring lasting value for communities and stakeholders.

# Our Services

- Construction



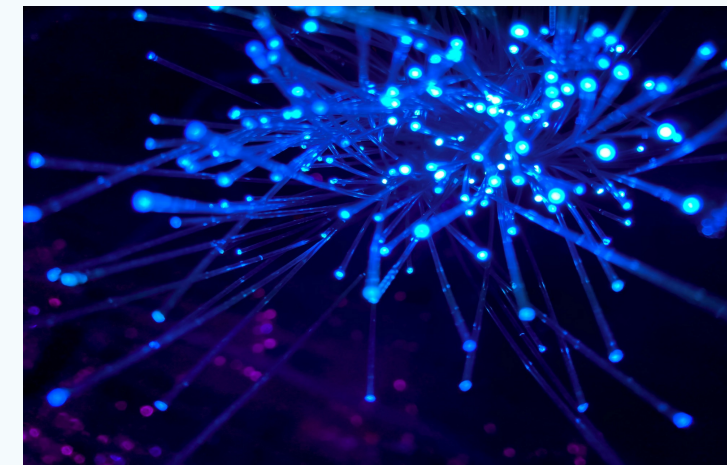
Complete building solutions focused on structural quality, timely delivery, and operational excellence.

- MEP Works



Comprehensive mechanical, electrical, and plumbing systems designed to ensure efficiency, functionality, and long-term reliability.

- Cities Infrastructure & Technology (CIT)



Smart city and infrastructure projects including C4I systems, IoT applications, and command & control technologies.

- Solar Energy



Design and implementation of efficient solar systems that reduce energy costs and support sustainability goals.

- Cold Storage



Design and execution of advanced cold storage facilities, including refrigeration, insulation, and controlled environments for industrial, commercial, and food sectors

- Power & Water



Integrated solutions for power, substations, desalination, and sustainable water systems—supporting vital infrastructure.

# Our Capabilities Construction

## Civil & Structural Works

### Supply, Installation, and Execution:

1. Site preparation and earthworks
2. Concrete works (foundations, slabs, columns, beams)
3. Steel structure fabrication & erection
4. Blockwork, plastering, and finishing
5. Waterproofing and insulation
6. Roadworks and asphalt paving
7. Boundary walls and retaining walls
8. Formwork and scaffolding
9. Painting and interior finishing
10. Infrastructure works (drainage, culverts, etc.)

## Architectural Finishes

### Design, Build, and Fit-out:

1. Exterior and interior cladding
2. Flooring systems (tiles, vinyl, epoxy)
3. False ceilings and gypsum works
4. Aluminum, glass, and glazing works
5. Doors, windows, and hardware installations
6. Elevators and vertical transportation coordination
7. Façade works
8. Specialized building finishes for hospitals, hotels, and malls

# Construction

From foundations to final finishes, SAMICO delivers complete construction solutions tailored to every project need.

## Commercial Projects

Large-scale developments such as corporate office buildings, showrooms, universities, hospital, hotel and real estate projects.



## Industrial & Infrastructure Projects

Heavy-duty facilities including factories, warehouses, utility plants, and supporting infrastructure works such as roads, drainage, and external networks.



# Our Capabilities MEP

## Electrical

### Supply, Installation, Testing & Commissioning:

We specialize in all types of electrical and low current systems related to modern industrial, commercial, hospital buildings and solar energy system.

1. Medium Voltage Switchgear, Cables 13.8 kV & Transformers
2. Panel Boards – MCCP
3. Isolated & Surgical Panels
4. Indoor, Outdoor Lighting & Lighting Control Panel
5. Cables & Cable Tray
6. Bus way System
7. Power Outlet & Disconnect Switch
8. Generator
9. UPS System
10. Grounding & Lightning System
11. Low Current System
12. Helipad System (complete)
13. Solar Energy System

## Mechanical

### Supply, Installation, Testing & Commissioning:

Electro-mechanical systems including generators, fuel stations, pumps, plumbing systems, HVAC, Mechanical gates, etc.

1. HVAC System
2. BMS System
3. Fire Fighting System
4. Plumbing System
5. Drainage System
6. R.O.Plant System
7. Boiler System
8. Medical Gas System
9. Irrigation System
10. Installation of fuel transferring & treatment system (Sewage & Water)
11. LPG Gas System
12. Air Compressor and network air pipes

# Our Capabilities Construction - MEP

Comprehensive MEP solutions tailored for efficiency, reliability, and seamless integration.

We cater to all MEP works for :

## Power Plant Projects

We deliver complex mechanical and electrical systems that ensure uninterrupted power generation and plant safety.

## Commercial Projects

We equip business environments with efficient climate control, lighting, and utility systems tailored to daily demands.

## Residential Projects

We bring comfort and efficiency to living spaces through optimized plumbing, ventilation, and electrical installations.

## Substation Projects

Designing and implementing advanced substation systems to ensure stable and secure energy distribution.

## Hospital & Hotel Projects

Our work supports life-saving operations with high-reliability systems for air, power, water, and safety compliance.

## Industrial Projects

Designing and implementing advanced substation systems to ensure stable and secure energy distribution.

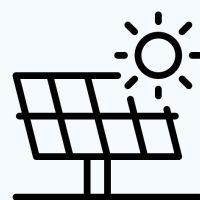
## Tower Projects

From vertical utilities to smart control systems, we implement integrated solutions for high-rise developments.



# Our Capabilities - Solar Energy System

We design and implement reliable and high-efficiency solar energy systems, delivering sustainable power solutions with optimized performance, smart energy management, and long-term cost savings for industrial, commercial, and utility-scale applications.



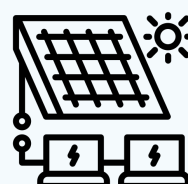
## Solar System Design: Custom Solutions:

Tailored solar PV systems designed to meet specific energy demands, site conditions, and future expansion needs, including rooftop, ground-mounted, and hybrid systems.



## Safety & Standards

**Compliance & Reliability:** All installations comply with international electrical and safety standards, ensuring system durability, operational safety, and long-term performance reliability.

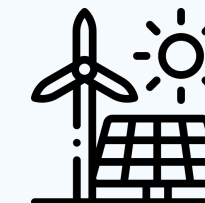


## System Types:

Wide Applications: Specializing in on-grid, off-grid, and hybrid solar systems, integrated with battery storage solutions for commercial facilities, warehouses, factories, and remote sites.

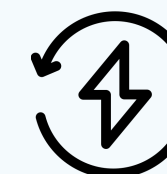


**Smart Energy Integration:** Our solar systems are integrated with smart inverters, energy monitoring platforms, and optional battery storage to ensure optimized energy usage, real-time performance tracking, and grid stability.



## End-to-End EPC Solutions:

From feasibility studies and system design to procurement, installation, testing, and commissioning, we manage the complete solar project lifecycle with a focus on quality and performance.

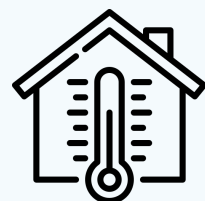


## Energy Efficiency

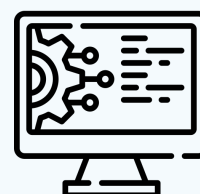
**Optimized Performance:** We utilize high-efficiency solar panels, smart inverters, and advanced monitoring systems to maximize energy output and reduce electricity costs by up to 40%.

# Our Capabilities Cold Storage

We design and implement advanced cold storage and refrigeration systems with precise temperature control, insulation, and energy-efficient technologies for industrial, commercial, and food sector needs.



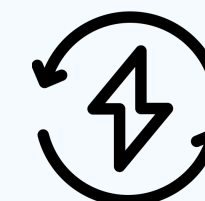
**Temperature Control:** Custom solutions for a range of temperatures, from chillers (+4°C) to ultra-low temperature freezers (-80°C).



**System Types:** Specializing in blast freezers, pharmaceutical cold rooms, and large-scale refrigerated warehouses.



**Safety & Standards:** All our installations are built to meet rigorous international standards for food safety and pharmaceutical compliance.



**Energy Efficiency:** We utilize state-of-the-art technologies like variable frequency drives and advanced refrigeration controls to reduce operational costs by up to 30%.



# Our Project

## Our Project - King Abdullah Financial District

Client	Public Pension Agency - Rayadah InvestmentCo.
Consultant	Zuhayr Fayaz
Duration	Jul-09 to May-11
Value (SR)	214,000,000

### Electromechanical activities for this project include:

Check Design, Shop Drawings,

Supply, installation, testing & commissioning for the following:

- 13.8 KV MV Switchgear
- Bus Duct System
- Air Inlet and Outlet systems
- MV Transformer Dry Type (8X1600 KVA & 5X1000 KVA)
- LV Switchgear, Distribution Panel Board
- Indoor, Outdoor, & External Lighting System
- Power System
- Generator Backup Supply 2x2000 kW with complete ATS
- Synchronization System including daily and weekly fuel tank
- UPS System
- CCTV System
- Public Address System
- MATV System
- Fire Alarm System
- BMS
- Car Parking System
- Data Network
- Telephone Networks
- Grounding & Lightning System
- Cable Tray & Trunking System

- Photo Voltic System
- Video Intercom System
- R.O System
- Plumbing System including Sanitary fixtures
- Hot & Cold Water System
- HVAC System
- Heat Exchanger
- Air Handling Units. Heat Recovery Units, Fan Coil Units, Chilled
- Water Pumps, Chilled Water Piping & Related Accessories,
- Duct Work & Related Accessories.
- Fire Protection System:FM200 System, Sprinkler System, Co2 system
- Fire Fighting Pumps Set. Including Electric Fire Pump, Jockey
- Pump and Diesel Pump
- Wiring Device
- Water Distribution System
- Drainage Piping System
- Irrigation & Fountain System
- Chilled Water System
- Exhaust Fan
- Water Storage Tank



## Our Project - Al-Qasr Mall

Client	Dar Al Arkan
Consultant	Saudi Diyar
Project Management	Turner
Main Contractor	Saudi Co.

### Project Brief Description:

AL QASR MALL, RIYADH, Consist of three storey commercial and shopping centre with ground floor level and basement level as parking area. The AL QASR MALL includes a Hypermarket, Lines of Shops, Fun Rides, Boating Area, Amusement Area and Food Court.

Total built-up area equal 250,000 m2

Electromechanical activities for this project include:

Check Design, Shop Drawings,

Supply, installation, testing & commissioning for the following:

- LV Switchgear, Distribution Panel Board
- MCC (Motor Control Center)
- Indoor, Outdoor, & External Lighting System
- Façade Lighting
- Street Lighting,
- Power System
- Generator Backup Supply 2x1500 daily and weekly fuel tank with complete ATS- Synchronization System including

- UPS System
- CCTV System
- Sound System
- MATV System
- Fire Alarm System
- Data Network
- Telephone System (1500 pair MDF),
- Grounding & Lightning System
- Cable Tray & Trunking System.
- R.O. Plant (capacity 100 m3/day),
- Plumbing System including Sanitary fixtures
- Irrigation System,
- Hot & Cold Water System
- HVAC System
- Fire Protection System:FM200 System & Sprinkler System
- Fire Fighting Pumps Set. Including Electric Fire Pump , diesel pump & Jockey Pump.
- BMS.



## Our Project - New West Makkah 380/110/13.8 kV (1/2)

Client	SEC-WOA
Starting Date	Dec-2008
Target Date	Jun-2011
Value (SR)	444,372,399



### Project Brief Description:

In Order to supply Power to the Makkah Al-Mukaramah especially Al - Haram Area, SEC intends 'Construction of a New Makkah West 380/110/13.8kV BSP Substation' The Makkah West Project is located near holly Makkah city & will be connected to the existing 380kV Substations; KMT BSP, South Azizia , Shoibah-2 & HV Makkah through OHL.

1. 15 No 380kV, 3150A, 63kA (1Sym) GIS arranged in One & Half Breaker scheme as detailed Below:

- 3No GIS Breakers in Diameter-C1 for 380kV Spare Cable Feeder & 500MVA AT01 Feeder
- 3No GIS Breakers in Diameter-C2 for 380kV S.Azizia OHL Feeder & for 380kV Spare Cable Feeder
- 3No GIS Breakers in Diameter-C3 for 380kV Shoiba -2 OHL & 500MVA AT02 Feeder
- 3No GIS Breakers in Diameter-C4 for 380kV KMT OHL Feeder & for 380kV Spare Cable Feeder
- 3No GIS Breakers in Diameter-C5 for 380kV HV Makkah OHL Feeder & 500MVA AT03 Feeder

- 2. 30No 110kV, 3150A, 40kA (1Sym) GIS arranged in Double Bus & Single Breaker Scheme as detailed Below:
- a) 3No GIS Bays, 3150A, for Incomers from 500MVA TF Viz: AT01, AT02 & AT03.
- b) 2No GIS Bays, 3150A, for Bus Sections
- c) 2No GIS Bays, 3150A, for Bus Couplers
- d) 3No GIS Bays, 2000A, for 67MVA TF Viz: T04, T05 & T06.
- e) 20No GIS Spare Bays, 2000A, for Future O/G Feeders

## Our Project - New West Makkah 380/110/13.8 kV (2/2)

Client	SEC-WOA
Starting Date	Dec-2008
Target Date	Jun-2011
Value (SR)	444,372,399



### Project Brief Description:

3. 46No 13.8kV, 3600A, 25kA (1Sym) MV Switchgear as detailed Below :

a) 3No, 3600A Switchgears for Incomers from 67MVA TF Viz: T04, T05 & T06.

b) 2No, 3600A Switchgears for Tie Circuits.

c) 2No, 3600A Panels for Bus Risers including Removable Busbar Links.

d) 39No, 630A Panels for Outgoing Feeders

4. 3No 380/110/13.8kV, 500MVA Auto Transformers

5. 1No, 400/120/13.8kV, 250MVA Spare Transformer similar to Existing Transformers at HVM Substation.

6. 3No, 110/13.8kV, 67MVA Power Transformers

7. 3No 13.8kV, 7 MVar, Capacitor Banks with detuning Reactors (2mH)

8. Complete Control, Protection, Metering and Annunciation works at new Makkah West 380/110/13.8kV S/S and modification in existing Control, Protection & Annunciation at remote end Substations Viz: 380kV KMT, Shoiba -2, HVM & S.Azizia Substations.

- 9. Substation Auxiliaries including 110kV Cable (1CX2000mm<sup>2</sup>) b/w 500MVA T/Fs & 110kV GIS, 110kV Cable (1CX630mm<sup>2</sup>) b/w 67MVA T/Fs & 110kV GIS, 13.8kV Cables (1C X 630 mm<sup>2</sup>) b/w 67MVA TFs & 13.8kV Switchgears, LV Power & Control cables, Complete AC & DC Systems, Earthing and Indoor & Out door Lighting.
- 10. SDH STM-16 Fiber Optic Terminal System Including Protection Signaling Equipment
- 11. SCADA, SOE & Fault Recorder System
- 12. Civil works including the new 380kV GIS Hall, 110kV GIS Hall and 13.8kV Switchgear Room & Relay & Control Buildings
- 13. Mechanical Works including HVAC for new Buildings, FM200 System for Control Room, Cable Basement under Control Room Communication Room, Battery Room & Cable chutes, Sewerage and Water supply Systems and Over Head Traveling Crane in new GIS Buildings

## Our Project – Mina Hospital

Client	Ministry of Health
Consultant	Nezar Kurdi Consultant Office
Designer	Zuheyer Fayz & Partners
Value (SR)	62,300,000

### Electromechanical activities for this project include:

- Check Design, Shop Drawings,
- Supply, installation, testing & commissioning for the following:
  - 13.8 KV MV Switchgear
  - Bus Duct System
  - Surgical Panels
  - MV Transformer Dry Type (4X1600 KVA)
  - LV Switchgear, Distribution Panel Board
  - Indoor, Outdoor, & External Lighting System
  - Power System
  - Generator Backup Supply 2x1250 kw with complete ATS-
  - Synchronization System including daily and weekly fuel tank
  - UPS System
  - CCTV System
  - Public Address System
  - MATV System
  - Fire Alarm System
  - Nurse Call System
  - Medical Gas System
  - Data Network
  - Telephone Networks
- Grounding & Lightning System
- Cable Tray & Trunking System.
- Boiler System
- Helipad System
- R.O System
- Plumbing System including Sanitary fixtures
- Hot & Cold Water System
- HVAC Includes: Chillers – ( 4 X 500 Tons & 1 X 155 Tons ),
- Air
- Handling Units. Heat Recovery Units, Fan Coil Units, Chilled
- Water Pumps, Chilled Water Piping & Related Accessories,
- Duct Work & Related Accessories.
- Fire Protection System:FM200 System, Sprinkler System.
- Fire Fighting Pumps Set. Including Electric Fire Pump, Jockey
- Pump and Diesel Pump at Basement
- Fire Fighting Pumps Set. Including Electric Fire Pump, Jockey
- Pump at 5th Floor.



## Our Project – Centria Mall

Client	Sheikh Mohammed Bin Abdul Aziz Al-Deghaither (Badr Aldeghaither Est.).
Consultant	Erga
Designer	Zuheyer Fayz & Partners
Value (SR)	19,500,000

### Scope Of Work: Supply, Installation, Testing & Commissioning For the following:

- HVAC Includes: Chillers, Air Handling Units, Heat Recovery Units, Fan Coil Units, Chilled Water Pumps, Chilled Water Piping & Related Accessories, Duct Work & Related Accessories.
- Fire Protection System: Fire Fighting Pumps Set. Inc. Electric Fire & Jockey Pump. Fire House Valve. Fire Extinguisher Cabinet. Fire Protection Piping & Accessories. Sprinklers. Heads (Pendants Concealed) up Rigllt Exposed Type, side Wall Type. Alarm Check Valve, Fire Department Connections, Test & Drain Valve.
- Plumbing System including Sanitary Fixtures
- MV Switchgear.
- MV Transformer Dry Type (4X1600 KVA).
- LV Switchgear, Distribution Panel Board.
- MV Cable & LV Cable.
- Internal & External Lighting System.
- Power System.
- CCTV System.
- Sound System.
- MATV System.
- Fire Alarm System.
- Data Network.
- Telephone Networks.
- Grounding & Lightning System.
- Cable Tray & Trunking System.



## Our Project – Super Model Café (Kingdom Tower)

Client	Kingdom Tower
Value (SR)	2,300,000

### Electromechanical activities for this project include:

- Supply, Installation, Testing & Commissioning Of
- Lighting Fixture.
- Panel Boards.
- Cables & Power systems.
- Audio Visual System.
- Fire Alarm System.
- Telephone, Data System.



## Our Project - Alrajhi Mosque At Riyadh

Client	Alrajhi Co.
Starting Date	Aug-02
Completion Date	Dec-04
Value (SR)	3,295,840

### General Information About Alrajhi Mosque

Location : At Exit (15) From The Eastern Circling Road .

The Mosque Has The Capacity To Have (25000) Prayer.

Total Building Area Is (40000) M2 Square Meter.

Building Is Formed From Three Floors.

Capacity Of Parking Is (500)cars.

Total Budget Cost Is ( 50,000,000) Fifty Million Saudi Riyals.

Total Earthing Area Is (13,256) M2 Square Meter

### Electromechanical activities for this project include:

- CCTV System, Telephone System, Sound Address System, Fire Alarm System,
- Lighting System
- Power Socket, Disconnecting Switch.
- Cables , Cable Trays.
- Panel Boards.
- Earthing System.
- Lightening System.
- 5 M Transformers, 1000 Kva , 13.8kv/380v
- 13.8kv Switchgear/380 V.
- Generator 500 Kw.



## Our Project – Al Fanar Precast Factory

Client	alfanar Construction Systems
Starting Date	May-09
Target Date	Jan-10
Value (SR)	17,000,000

### Electromechanical activities for this project include:

Check Design, Shop Drawings,

Supply, installation, testing & commissioning for the following:

- Panel Boards

Cables & Cable Trays

Industrial Special Lighting System

- Generator Backup Supply 4x1000 kw with complete ATS-

Synchronization System

- CCTV System

- Sound System

- MATV System

- Fire Alarm System

IP Telephone System

Lightning & Grounding Systems

Plumping System

Fire Fighting System

HVAC System

BMS



All electromechanical works related to alfanar Precast Factory Project.

## Our Project - Alfanar MV Factory

Client	alfanar Electrical System (AES)
Starting Date	Sep-2008
Completion Date	Mar-2009
Value (SR)	15,000,000

Electromechanical activities for this project include:

Supply, installation, testing & commissioning for the following:

Panel Boards

Cables & Cable Trays

Lighting

Fire Alarm, Public Address, CCTV, MATV

Telephone System

Lightning & Grounding Systems

Plumping System

Fire Fighting System

HVAC System

BMS

All electromechanical works related to alfanar MV Factory Project.



## Our Project - alfanar Head Office

Client	Al Rajhi & Sons Co.
Value (SR)	4,200,000

### Electromechanical activities for this project include:

- Check Design, Shop Drawings,
- Supply, installation, testing & commissioning for the following:
- MV Transformer Oil Type (2X1000 KVA)
- LV Switchgear, Distribution Panel Board
- Indoor, Outdoor, Landscape & External Lighting System
- Power System
- UPS System
- CCTV System
- Sound System for VIP Conference rooms
- MATV System
- Fire Alarm System
- Data Network
- Access Control System
- IP Telephone Networks
- Grounding & Lightning System
- Cable Tray & Trunking System.
- Plumbing System including Sanitary fixtures
- Hot & Cold Water System
- HVAC Includes: Fan Coil Units, Chilled
- Water Pumps, Chilled Water Piping & Related Accessories, Duct Work & Related Accessories.
- Fire Protection System: Sprinkler System
- Fire Fighting Pumps Set. Including Electric Fire Pump & Jockey Pump.



## Our Project - alfanar Warehouse & Admin

Client	alfanar Property Co
Starting Date	Dec-07
Target Date	Jan-10
Value (SR)	13,600,000

### Electromechanical activities for this project include:

- Supply, installation, testing & commissioning for the following:
- LV Switchgear, Distribution Panel Board
- Indoor, Outdoor, & External Lighting System
- Power System
- Generator Backup Supply 2x1000 kw with complete ATS-
- Synchronization System including daily and weekly fuel tank
- UPS System
- CCTV System
- Sound System
- MATV System
- Fire Alarm System
- Data Network
- Telephone Networks
- Grounding & Lightning System
- Cable Tray & Trunking System.
- Plumbing System including Sanitary fixtures
- Hot & Cold Water System
- HVAC Package Units
- Fire Protection System:FM200 System & Sprinkler System
- Fire Fighting Pumps Set. Including Electric Fire Pump & Jockey Pump.



## Our Project - alfanar Transformer Factory

Client	Alfanar Projects Devp.
Starting Date	May-2008
Completion Date	Feb-2009
Value (SR)	20,800,000

### Electromechanical activities for this project include:

- Supply, installation, testing & commissioning for the following:
- Panel Boards
- Cables & Cable Trays
- Fire Alarm, Public Address, CCTV, MATV
- Telephone System
- Lightning & Grounding Systems
- Plumping System
- Fire Fighting System
- HVAC System
- BMS

All electromechanical works related to alfanar Transformer Factory Project.

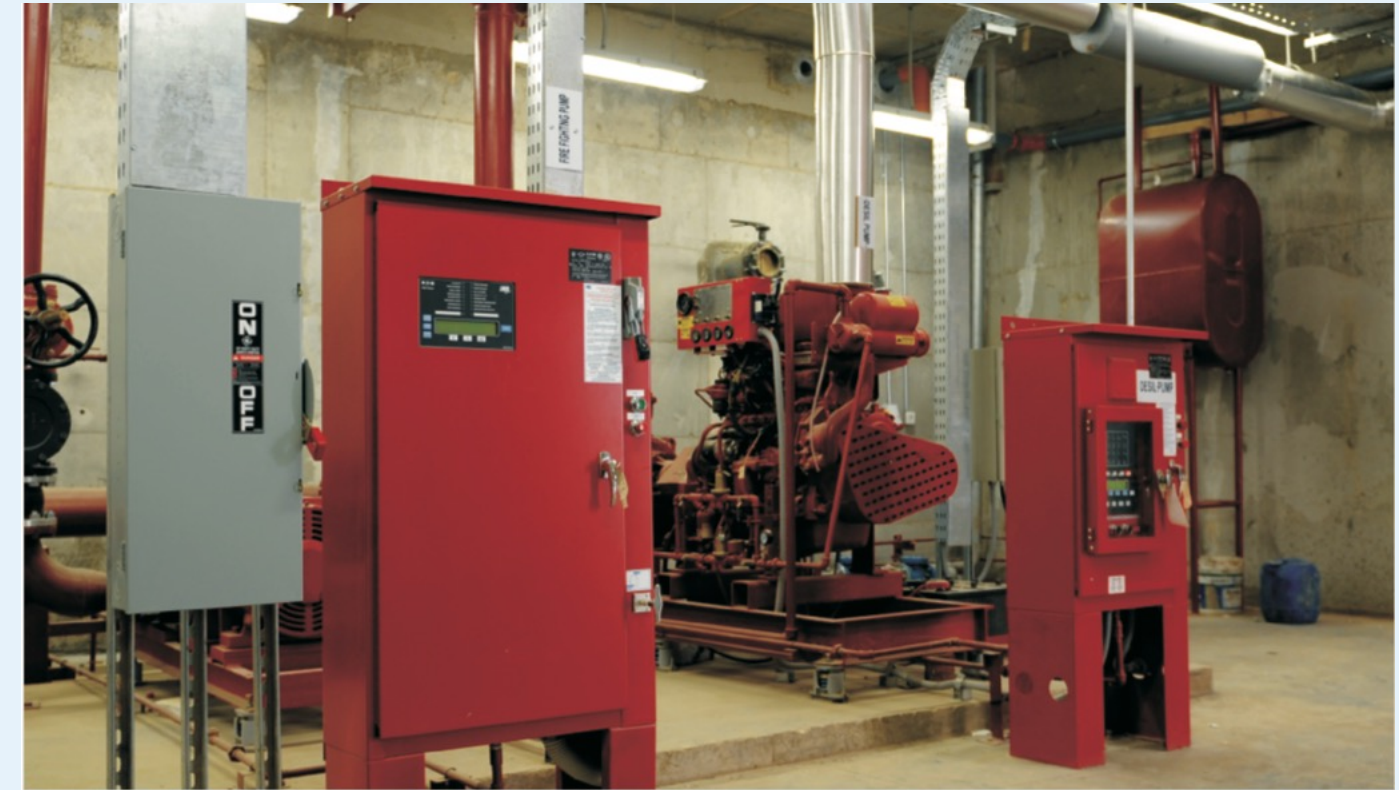


## Our Project - alfanar Head Quarter & Stores at Dammam

Client	Alfanar Projects Devp.
Starting Date	Aug -2003
Completion Date	Jun-2004
Value (SR)	10,000,000

### Work activities include:-

- External & internal Lighting System.
- Power System.
- Disconnect Switch .
- Wiring Devices.
- Panel Board.
- Fire Alarm System.
- AHU Qty = 4 .
- LV Power Cable & Cable Tray.
- Telephone & Data System.
- Plumping System.
- Fire Fighting System with all accessories.



## Our Project - STC Data Center

Client	Saudi Technical Ltd
Consultant	Omrانيا & Associates Architecture & Engineering Consultants

Work activities include:-

- 13.8 Kv Switchgear
- Ring Main Unit.
- 13.8 Cables.
- 10 Transformer ( 1000 Kva ).
- Bus Duct System.



# Our Project - alfanar Ceramic Factory

Client	Alfanar Projects Devp.
Starting Date	Mar-08
Completion Date	Jul-09
Value (SR)	62,105,000

## Electromechanical activities for this project include:

- Supply, installation, testing & commissioning for the following:
- Panel Boards
- LPG Gas System
- Air Compressor and Network Air Pipes
- Cables & Cable Trays
- Lighting
- Fire Alarm, Public Address, CCTV, MATV
- Telephone System
- Lightning & Grounding Systems
- Plumping System
- Fire Fighting System
- HVAC System
- BMS
- Air Compressor System
- All electromechanical works related to alfanar Ceramic Factory Project.



# Our Project - alfanar Cables Factory Project

Client	alfanar Electrical System (AES)
Starting Date	Dec-07
Completion Date	May-08
Value (SR)	31,000,000

Electromechanical activities for this project include:

Supply, installation, testing & commissioning for the following:

Panel Boards

Cables & Cable Trays

Lighting

Fire Alarm, Public Address, CCTV, MATV

Telephone System

Lightning & Grounding Systems

Plumping System

Fire Fighting System

HVAC System

BMS

Air Compressor System

All electromechanical works related to alfanar Cables Factory Project.



## Our Project - NADEC Cow's Farm

Client	NADEC
Starting Date	Oct-07
Completion Date	Jan-09
Value (SR)	27,500,000

### Electromechanical activities for this project include:

- Execution of electrical distribution system main network and outdoor lighting networks at NADEC Cow's Farm #6 in Harad
- Package S/S Oil Type (6x1000 KVA)
- LV Switchgear, Distribution Panel Board
- Indoor, Outdoor, & External Lighting System
- Power System
- Generator Backup Supply 6x1250 kw with complete ATS-
- Synchronization System including daily and weekly fuel tank
- Fire Alarm System
- Grounding & Lightning System
- Cable Tray & Trunking System.
- Fire Protection System:FM200 System & Sprinkler System
- Fire Fighting Pumps Set. Including Electric Fire Pump & Jockey Pump.



# Our Project - Dammam Medical Tower

Client	Ministry Of Health
Starting Date	Apr-2006
Completion Date	Feb-2007
Value (SR)	3,623,814

## Electromechanical activities for this project include:

Supply, Installation, Testing & Commissioning Of

- 4x1500 KVA Transformer.
- 13.8 Kv Switchgear.
- Panel Boards.
- 13.8 Kv Medium Voltage Cables.
- Bus duct System
- Earthing System



# Our Project - Al Hair Complex Factory

Client	Al Rajhi & Sons Co.
Starting Date	Jun-2001
Completion Date	Jan-2003
Value (SR)	5,215,081

## Electromechanical activities for this project include:

- Supply & Installation of MV Cables (3x95mm<sup>2</sup>) length is 1000mM,
- Complete with termination
- Supply & Installation of Ring Main Unit, No. 4 (13.8KV)
- Supply & installation of Transformers (13KV/400V), 1500KVA, No. 4.
- Supply & Installation of Switch gears, 2500 A No.2
- Supply & Installation of Panel Boards.
- Supply & Installation of Lighting & Power Systems.



## Our Project - Mall of Arabia-Jeddah

Client	Fawaz Abdulaziz Al Hokair Real Estate Co.
Value (SR)	2,400,000

**Work activities include:-**

- Bus Duct 5000m.
- L.V Cable Pulling + Termination.



## Our Project - Norana Clinic, housing and Shops-Al Malaz

Client	Sheik Abdulrahman Alzahrani
Value (SR)	15,000,000

### Work activities include:-

- Lighting Fixtures.
- Power System.
- Cables, cable trays.
- Power and Lighting Panel boards for clinic, housing and shops.
- MDB.
- Telephone Network for housing, clinic and shops.
- Computer Network.
- Wiring Devices.
- HVAC System.
- Exhaust Fan



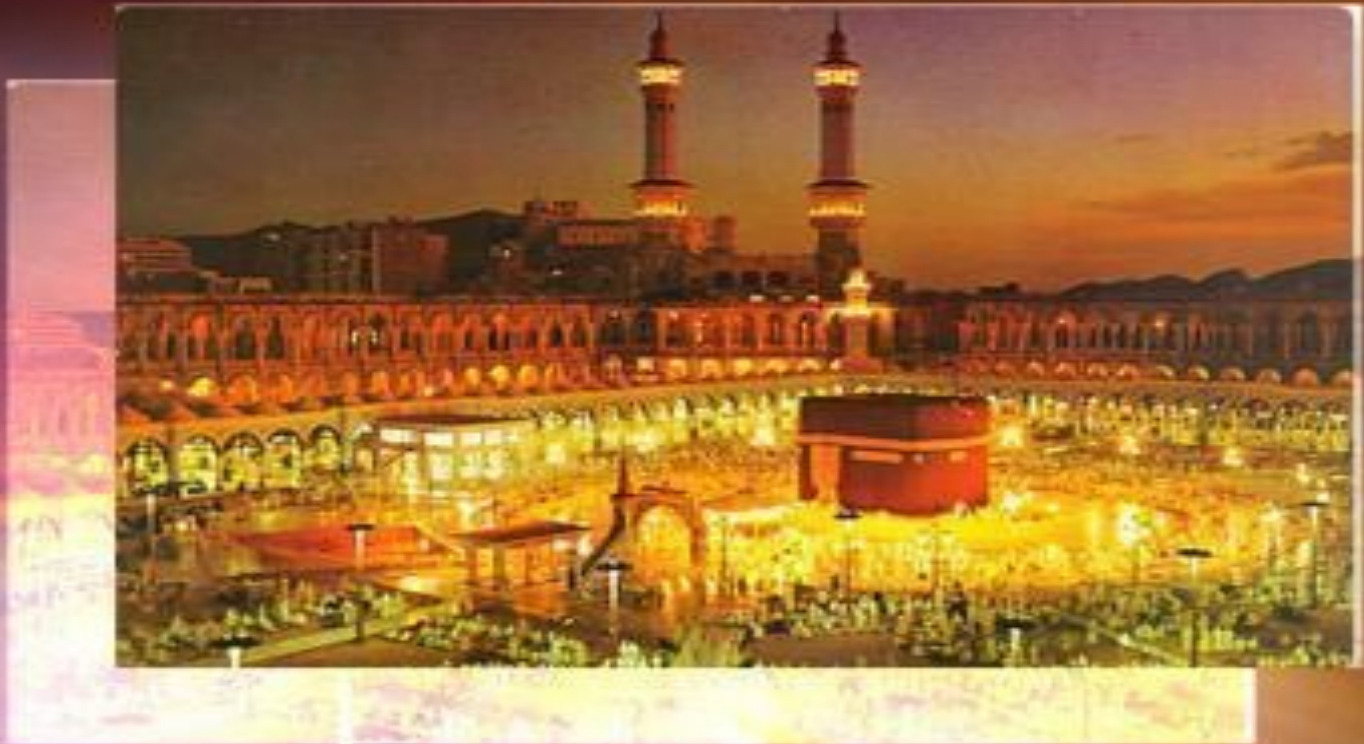
# Our Project - Hail & Arar Sewage Treatment Water

Client	Sheik Abdulrahman Alzahrani
Value (SR)	15,000,000

## Work activities include:-

- Switchgear 33KV.
- 2000 KVA Power Transformer
- Switchgear Panel Board
- A)-MDB
- B)-Switchgear Incomes from Generator (3200 A)
- C)-Switchgear Incomes from Transformer (3200 A)
- D)-ATS ( 3200 A )
- LV Panel Board.
- Control Panel.
- Motor Control Center.
- Indoor, Outdoor Lighting fixtures
- Fire Alarm System.
- Telephone System.
- MV-LV Power Cables.
- Control Cables.
- Buttery Charge System.
- Earthing System.
- Power Outlet & Switch
- Generator System













# Contact Us

-  +966552199368  
+966555049067
-  [www.samico-sa.com](http://www.samico-sa.com)
-  [info@samico-sa.com](mailto:info@samico-sa.com)
-  Riyadh, Saudi Arabia



**THANK YOU**