

Chittenden County Homeless Alliance (CCHA)
 Steering Committee Meeting Minutes
 Thursday, June 4th, 2026; 9:00am – 11:00am
 Contois Auditorium, 149 Church Street, Burlington

Minutes

1. Introductions & Announcements 5 Minutes

2. Approves Minutes and Agenda 5 Minutes

a. Approval of the [May Meeting Minutes](#)

pass	For: 9
Motion: Travis	Opposed: 0
Second: Jen	Abstained: 0

○

b. Approval of the June Meeting Agenda

No vote	For:
Motion:	Opposed:
Second:	Abstained:

- Taylor proposed change:
 - Not voting on CE evaluation
 - Not voting on VSHA grant transfer until we have language to support and clarify the details that change

3. Legislative Reports 20 Minutes

a. Housing & Homeless Alliance of Vermont – Chad Simmons

- Bill for landlord and tenant agreement did not pass
- Bill would have intersected with h9.38
- Will continue working on it over the summer
- Chad working with staff from OEO next week
- Indication that service providers will be able to attend rule making legislative sessions beyond public forums
 - Most likely going to look like inviting legislators to service provider meetings that already exist rather than service providers attending private rule making sessions
- ESD holding info session next week to go into further details on their role in legislation and process
- Chad felt the collaboration between CCHA was very important to understand the ground level impact of legislation

4. HOP Award Presentations 40 Minutes

a. Spectrum Youth & Family Services

- Serve approx. 1500 youth per year
- Basic needs programs funded by HOP grant
- Operating 2 emergency shelter in Burlington, VT and 1 in St Albans, VT
 - Nightly Shelter – Burlington, VT

Chittenden County Homeless Alliance (CCHA)
Steering Committee Meeting Minutes
Thursday, June 4th, 2026; 9:00am – 11:00am
Contois Auditorium, 149 Church Street, Burlington

- Low barrier
 - Serves youth 18-25 years old
 - 34 youth served in the last year
 - 100 total youth served
 - Average length of stay is 88 days
 - Has been open year round for 2 years
 - The Landing – Burlington, VT
 - Serves youth 16-24 years old
 - Substance free space
 - Weekly case management requirement
 - Focus on building life skills
 - 15 individuals served in the last year
 - 4 moved on to scatter sites
 - 2 moved on to Pearl Street rapid rehousing
 - Youth Shelter – St. Albans, VT
 - Serves youth 18-24 years old
 - 8 shelter beds
 - Pearl Street Residence – Burlington, VT
 - Rapid rehousing
 - Utilize VSHA Project Based Vouchers
 - Start with a year long lease
 - After one year, move to a month to month lease
 - Burlington Drop-In center
 - Serves youth 14-24 years old
 - Open 7 days a week 9am to 6pm
 - Coordinated Entry access point
 - Low barrier
 - Served 107 youth in last year
 - Down from previous years d/t staff shortage/turnover
 - Champlain valley school system
 - Embedded in school
 - Has cultivated partnerships with school staff and support teams
 - Utilizes existing trust with the school systems to support youth
 - Referrals come through various points of contact in the school system
- b. Ascend Housing Allies
- See attached slides
- c. Pathways of Vermont
- See attached slides

Chittenden County Homeless Alliance (CCHA)
Steering Committee Meeting Minutes
Thursday, June 4th, 2026; 9:00am – 11:00am
Contois Auditorium, 149 Church Street, Burlington

- 8 units 10 beds
- Focus on rapid placement
- Median days to housing increase from CY19-20 at 55.5 days to CY25 at 295.5
- Demographics
 - 63% white
 - Burlington as a whole is 82% white
 - 24% black or African American
 - 5% of Burlington is black or African American
 - 20% Domestic violence survivors
- Morgan's Place
 - Open house moved to July (Date TBD)
 - Lots of support groups offered
 - DND nights are the most popular
 - Kitchen access only available during Community Cook Night
 - Wednesday's 6-8pm
- d. Committee on Temporary Shelter
 - See attached slides
 - Daystation
 - Showers and laundry
 - Hop funding 48% of cost
 - Open 365 days per year
 - Volunteers provide meals regularly, if not daily
 - Mail hub for many
 - Waystation
 - 56 bed capacity
 - Semi-congregate
 - 155 unique individuals
 - Turning Point Partnership
 - At Daystation 7 days/week
 - At Waystation 7 nights/week
 - Offering a recovery oriented space at both day and waystations
 - Family Shelter – Sophia
 - Two locations serving 15 families at any time
 - 54 beds total
 - Fire House – 5 families
- e. Burlington Housing Authority
 - See attached slides
 - 2 positions funded by HOP
 - One vacant
 - CE enrollment required before working with this program
 - Receive referrals from CVOEO

Chittenden County Homeless Alliance (CCHA)
Steering Committee Meeting Minutes
Thursday, June 4th, 2026; 9:00am – 11:00am
Contois Auditorium, 149 Church Street, Burlington

- 240-300 days from CE assessment to Housing Navigation Case Management
 - This is a big contributor to the “unable to contact” portion
- Avg days until housing was approx. 101
- The work:
 - Contacting/finding referrals
 - Enrolling in housing waiting lists
 - Keeping a careful eye out for mail
- Eligibility Question
 - Same funding from CVOEO and Carlos CMs and same referral process
 - Only difference z

5. Data Review 10 Minutes

a. [Coordinated Entry](#) – Stephanie Smith

- 25 Households moved into permanent housing in April!
 - Largely d/t CHT’s Post Apartments opening and several individual moving in
- Decrease enrollment in CE through winter months
 - Expecting enrollment to increase again during the summer

b. [Unsheltered Data – Community Resource Center](#) - Brenna Bedard

- Many unsheltered individuals
- May was a hard month – assault on a staff member, increased substance use on property,
- CRC received lots of support from service providers and individuals experiencing homelessness alike
- 706 individuals visited the CRC last month
- 539 individuals in May
 - Closed for a few days in May for all staff training
- 135 unduplicated visits on busiest day

c. [Unsheltered Data – COTS Daystation](#) - Jonathan Farrell

- 77 visits per day
- 334 unique individuals in April
- 33% reported unsheltered homelessness
- 10% reported recently housed
- 3% reported staying with friends and family
- 2% reported staying in hotels
- 1% reported either working nights or coming from a treatment facility
- Renovating kitchen at Daystation in August
 - Kitchen will be closed for approx. 6 weeks
 - Daystation will be offering a grab-and-go style meal

Chittenden County Homeless Alliance (CCHA)
 Steering Committee Meeting Minutes
 Thursday, June 4th, 2026; 9:00am – 11:00am
 Contois Auditorium, 149 Church Street, Burlington

6. VOTE – 2025 Coordinated Entry Evaluation 5 Minutes
 - No vote

7. VOTE – Permanent Supportive Housing (PSH) FY2025 Grant Transfer to Vermont State Housing Authority (VSHA) 10 minutes
 - No vote
 - Update from Rebecca Reese
 - o FY25 PSH Grant is being transferred to VSHA from City of Burlington
 - o Upon HUD approval the grant will start to shift
 - o Grant Transfer instead of Award Transfer
 - This allows no funding disruption
 - o Renewal application is still in the works if VSHA transfer is denied
 - VSHA stable funded

8. 2026 Housing and Urban Development (HUD) Continuum of Care (CoC) Notice of Funding Opportunity (NOFO) Update 20 Minutes
 a. VOTE - Rating/Ranking/Reallocation Policy

Pass with Amendment to add Beth Reilly	For: 8
Motion: Taylor	Opposed: 0
Second: Johnathan	Abstained: 4

- Looking carefully at the specifics and priorities
- Encourage service providers and orgs to be a part of the NOFO process
 - o Need their input and expertise
- Ranking Committee has changed d/t staffing changes and arising funding conflicts of interest

b. VOTE - Renewal Evaluation Scoring Tool

	For: 9
Motion: Jonathan	Opposed: 0
Second: Jen	Abstained: 2

- Values statements removed because they are not necessary for ranking process

9. Community Meeting Feedback 5 Minutes
 - Not enough time to discuss community feedback

3B

Ascend Housing Allies Inc

Housing Retention Services

of PBV Vouchers at Brandywine and Farmstead: **20**

of Current Clients w/ PBV's receiving services at Brandywine/Farmstead: **18**

of New Move-ins FY26: **2** (1 CE referral, 1 BHA waitlist, both utilize services regularly)

of Move-outs FY26: **2** (1 returned to homelessness, 1 to other permanent housing)

of Other Tenants receiving retention services from Ascend: **13**

(referred by Property Management including tenants at Parc Terrace/Cassavant)

3C

An Overview: Rapid Re-Housing at Pathways Vermont

- First client entered Program **November of 2018**
- Program funded at **8 units/10 beds**; serves ~ 10 households at any given time
- Serves households experiencing **literal homelessness** (HUD Category 1)
- Receive referrals from **Coordinated Entry**
- Provides **short-term rental assistance (24 months) + housing-focused supports**
- Designed to be **time-limited support (not permanent subsidy)**
- Focuses on **rapid placement + stabilization + income and housing retention** after exit

Chittenden County Homeless Alliance (CCHA)
Steering Committee Meeting Minutes
Thursday, June 4th, 2026; 9:00am – 11:00am
Contois Auditorium, 149 Church Street, Burlington

Snapshot of Data

Year	Positive Housing Exits	Ongoing Subsidy at Exit	Median Days to Housing	Number of Move-Ins
CY19–20	67% (8/12)	2 (25%)	55.5	16
CY21	60% (3/5)	1 (33%)	133	5
CY22	80% (4/5)	4 (100%)	56	3
CY23	75% (6/8)	2 (25%)	84.5	4
CY24	67% (4/6)	2 (50%)	202.5	8
CY25	100% (7/7)	2 (28%)	295.5	4

Patterns and Trends

- Housing exits generally stable over time
- Median days to housing **increase** over time; pre vs. during vs. post COVID
- Pattern is consistent with increasing housing market constraints
- *Move-in counts vary (3–16 range), which can make medians sensitive
- Long-term success depends on matching the right program to the right individual

Morgan's Place Peer Support Center

- Located at 50 South Willard Street Burlington, VT
- Open house in June (Date TBD)
- Staffed by folks with lived experience
- Support groups include:
 - Anxiety Support Group
 - Trauma Support Group
 - Talking about Rage
 - ...and more!
- Community Cook Night Wednesday's from 6-8pm at Outright VT

All services are free of charge. All online links can be found at pathwaysvermont.org. Email pvcc@pathwaysvermont.org with questions

COTS HOP Funding Report

July 1, 2025, through March 31, 2026

Self-serve breakfast, noontime meal service, showers, laundry, connection to services and community partners such as BHA, CHCB, Turning Point, UVM Health, VA/SSVF, Hireability, Department of Labor, Pathways, VT Associates, Howard Center, Miracle Messages, BPD staff. Connections to mainstream benefits, winter gear, shelter/motel options and connection to Coordinated Entry and COTS Services, including the Waystation.

- 20,531 total visits
 - 1433 unique visitors
 - Average per day 77 with peak of 105.
- Location break down of where folks stayed the night before across all 20,531 visits
 - Outside 48%, Sheltered 35%, housed 9%, Couchsurfing 5%, Motels 2%, Institution, working nights, unknown all less than 1% each.
- HOP funds 48% of the operation costs



Waystation

Housing-Focused overnight program shelter, 56-person capacity, In (14) 4-person rooms. Turning Point on site 7 evenings a week, CHCB onsite 2 evenings a week. Housing Navigation services provided.

- 155 unique individuals
- 38 Chronically Homeless (at shelter intake)
- 17 housing placements
- HOP funds 65% of the operation costs



Turning Point Partnership

Funded partially through HOP Opioid Settlement Funding and through the Pomerleau Family Foundation, Turning Point Recovery Coaches are embedded at the Daystation 7 days a week, and at the Waystation 7 evenings a week.

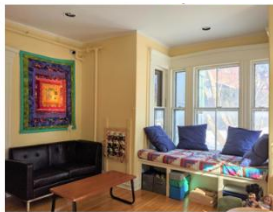
- December 2025 to March 31, 2026
 - 94 recovery meetings held at the Daystation
 - 84 recovery meetings held at the Waystation
 - 95 Recovery coaching sessions held at the Daystation
 - 23 Recovery coaching sessions held at the Waystation
 - 17 guests supported in engaging residential treatment
 - 29 clients assisted with transportation to treatment both outpatient and inpatient



Family Shelters

15 rooms in two locations, 24-7 accommodations for 15 families, (54 beds) shared kitchens and bathrooms. Children's Education Advocate and Children's Mental Health Advocate on staff, Housing Navigation services provided.

- 32 households
 - 46 adults
 - 60 children
- 2 Chronically Homeless households (upon entering shelter)
- 212 days Average length of stay
- 12 permanent housing placements
- HOP funds 48% of the operation costs



CE Housing Navigation

Funding for 4 Housing Navigators and 5 hrs/week of supervision.

- 155 households
 - 169 adults
 - 54 children
- 31 permanent housing placements
 - 18 rental housing without subsidy
 - 21 rental housing with subsidy
 - 2 staying with family or friends, permanent tenure
- HOP funds 64% of the program



Coordinated Entry Data: April 2026

595 Total Households Enrolled in CE as of April 30th

- **96** Families
- **278** Chronic Households
- **8** Veteran Households
- **39** Youth Households
- **63** 62+ Individuals

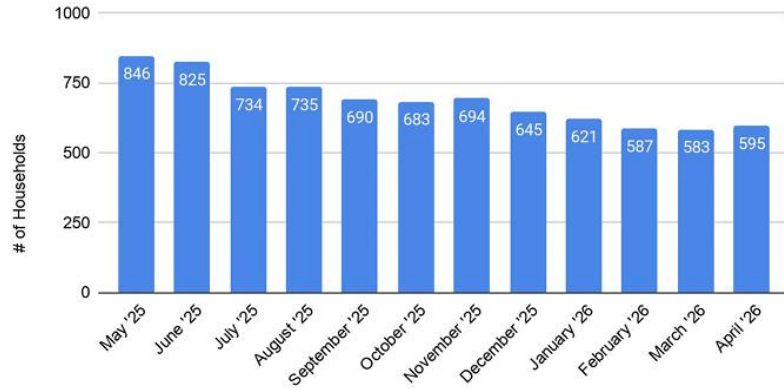
Phase 1: **444**

Phase 2: **44**

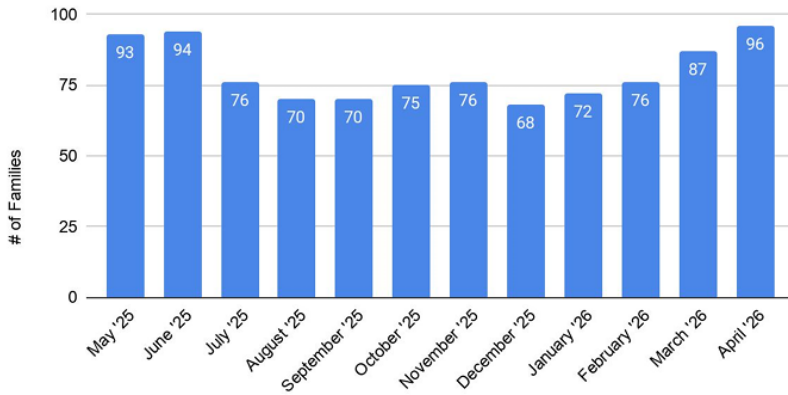
Phase 3: **74**

25 Households moved into permanent housing in April

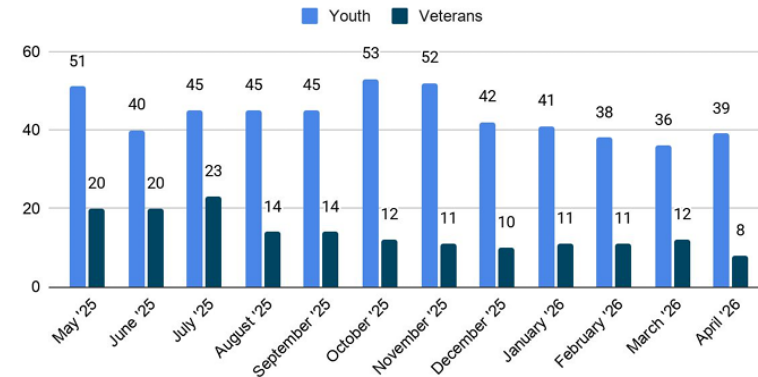
Number of Households Enrolled in Chittenden Coordinated Entry by Month Over the Last Year



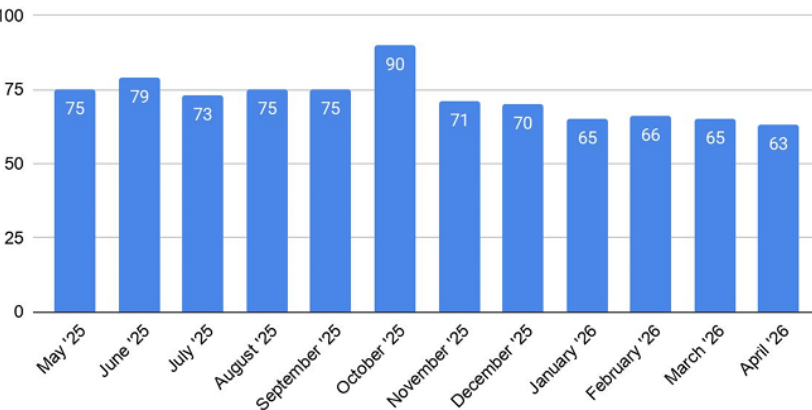
Number of Families Enrolled in Chittenden Coordinated Entry by Month Over the Last Year



Youth & Veterans Enrolled in Chittenden Coordinated Entry by Month Over the Last Year



62+ Individuals Enrolled in Chittenden Coordinated Entry by Month Over the Last Year



Number of Homeless Households in Chittenden County Housed by Month Over the Last Year

